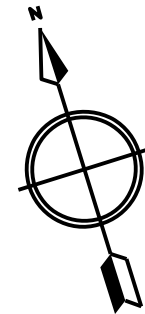
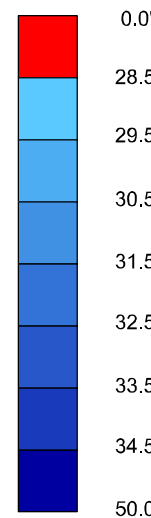


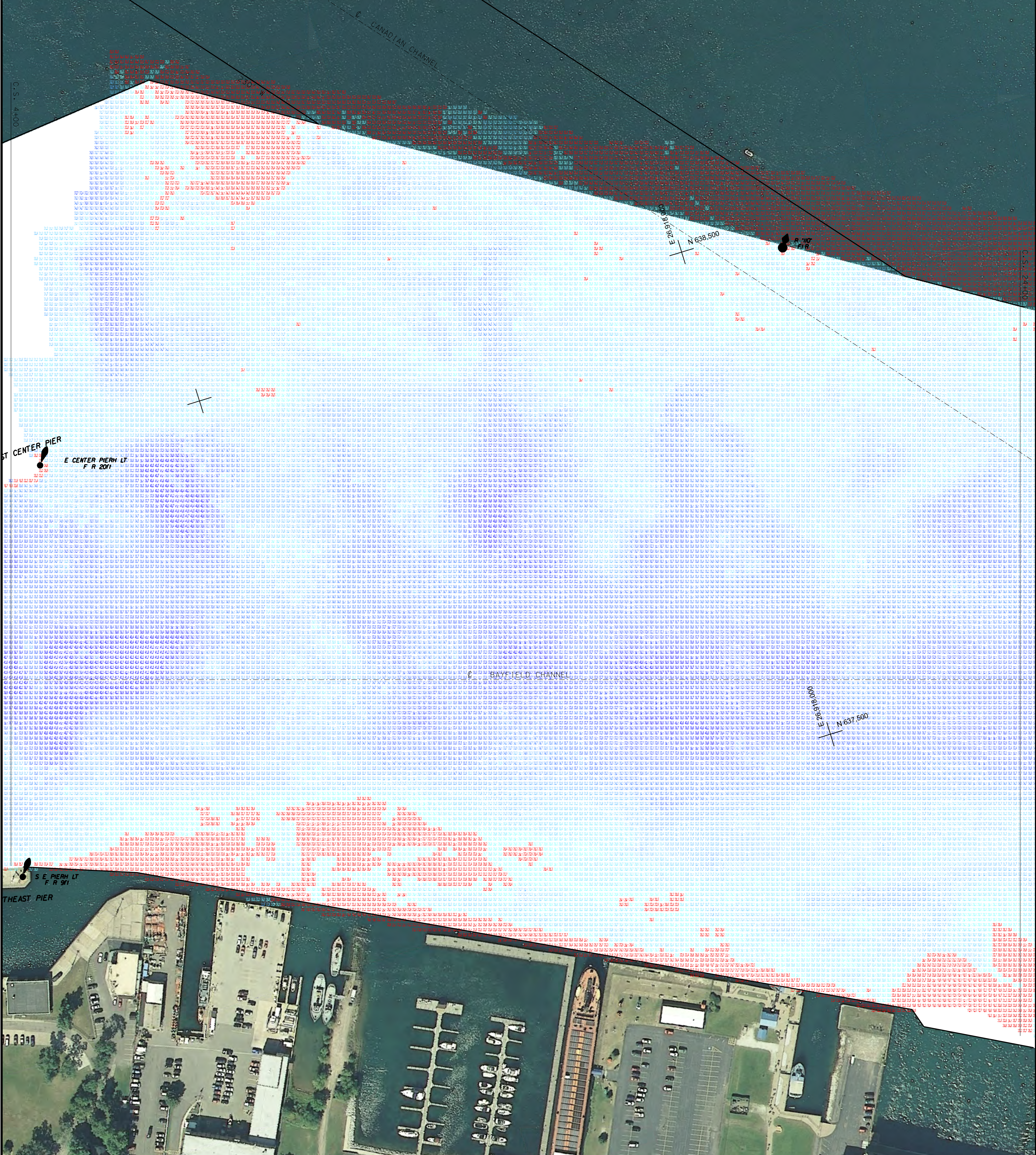
GENERAL NOTES

LEGEND

- THE SOUNDINGS INDICATED HEREIN ARE GENERALIZED DEPTHS AND ARE NOT REPRESENTATIVE OF THE FULL DATASET. THE SOUNDINGS REPRESENT THE MINIMUM DEPTH FOUND WITHIN THE 10X10 FOOT AREA CENTERED ON THE TEXT, DERIVED FROM A 1X1 FOOT AGEVATE DATASET AT CELL CENTER. THIS MAP SHOULD NOT BE USED FOR CHANNEL CLEARANCE OR VOLUME COMPUTATIONS. MINIMUM DEPTH DATA IS PRODUCED FOR STRIKE/SOAL REMOVAL OPERATIONS AND NOTICE TO NAVIGATION INTERESTS.
- ELEVATIONS AND SOUNDING DEPTHS ARE REFERRED TO INTERNATIONAL GREAT LAKES DATUM 1985 (IGLD 85). LOW WATER DATUM (LWD) ZERO IS 578.6 FEET ABOVE MEAN WATER LEVEL AT PT. RIMOUSKI QUEBEC. WATER LEVEL READINGS ARE FROM AN AUTOMATED GAUGE LOCATED AT NOAA US SLIP (6060). DEPTHS ARE MEASURED USING AN RZSONIC 2024 MULTIBEAM SONAR.
- THE INFORMATION DEPicted ON THIS MAP REPRESENTS THE RESULTS OF SURVEYS MADE ON JUNE 20, 2023 AND CAN ONLY BE CONSIDERED AS INDICATING THE GENERAL CONDITIONS PRESENT AT THE TIME.
- HORIZONTAL POSITIONING IS DETERMINED USING REAL TIME KINEMATIC GLOBAL POSITIONING SYSTEM (RTK). CORRECTIONS ARE PROVIDED BY THE MICHIGAN CONTINUOUSLY OPERATING REFERENCE STATIONS (CORS). THE CLOSEST BASE STATION IS USED AS THE DETERMINING FACTOR IN CORRECTION SELECTION. THE GPS RECEIVER IS MANUFACTURED BY APPLANIX MARINE POS/MV VER 5.0.
- GRID COORDINATES ARE BASED ON THE MICHIGAN STATE PLANE COORDINATE SYSTEM, LAMBERT PROJECTION, MICHIGAN NORTH ZONE (211), NORTH AMERICAN DATUM (NAD83). ALL COORDINATES SHOWN ARE IN U.S. SURVEY FEET.
- UNLESS OTHERWISE NOTED PROJECT DEPTH IS 28.5 FEET BELOW LOW WATER DATUM



100' 0 100' 200'
SCALE: 1" = 100'



LOCATION MAP
NO SCALE

SITE MAP
NO SCALE

SAINT MARY'S RIVER
SAULT SAINTE MARY MICHIGAN
FEDERAL NAVIGATION CHANNEL

COURSE 1 BAYFIELD CHANNEL SECTION 01
JUNE 20, 2023
CONDITION SURVEY

U.S. ARMY CORPS OF ENGINEERS
DETROIT DISTRICT
DETROIT, MICHIGAN

SOO AREA OFFICE
ST MARYS RIVER SECTION
119 EAST WATER STREET
SAULT STE. MARIE, MI 49783

SHEET IDENTIFICATION
BC1-01
SHEET 01 OF 05

SURVEYED BY:
DWN BY: N. GALT
SUBMITTED BY:

DATE:
2023/06/20

SOLICITATION NO.:

CONTRACT NO.:

MARK

MARK	DESCRIPTION	DATE	APPR	MARK	DESCRIPTION	DATE	APPR
------	-------------	------	------	------	-------------	------	------

U.S. Army Corps of Engineers