

US Army Corps of Engineers

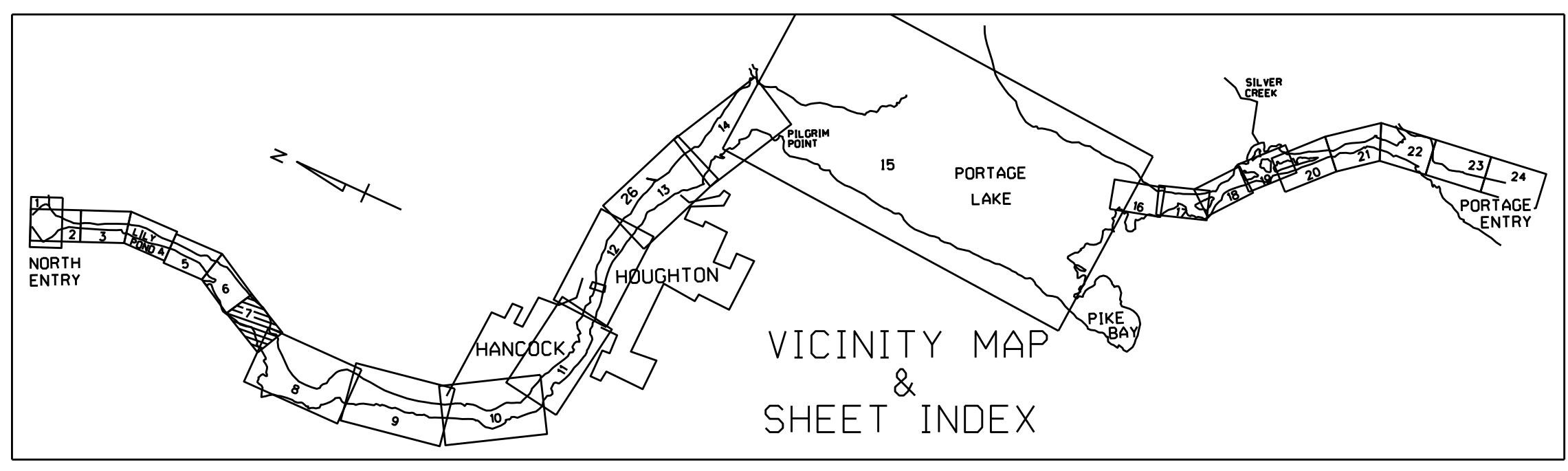
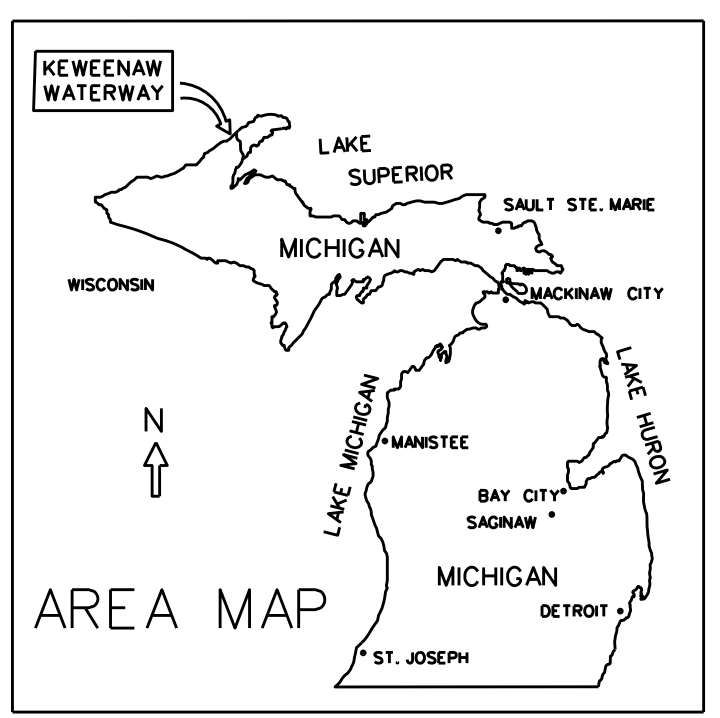
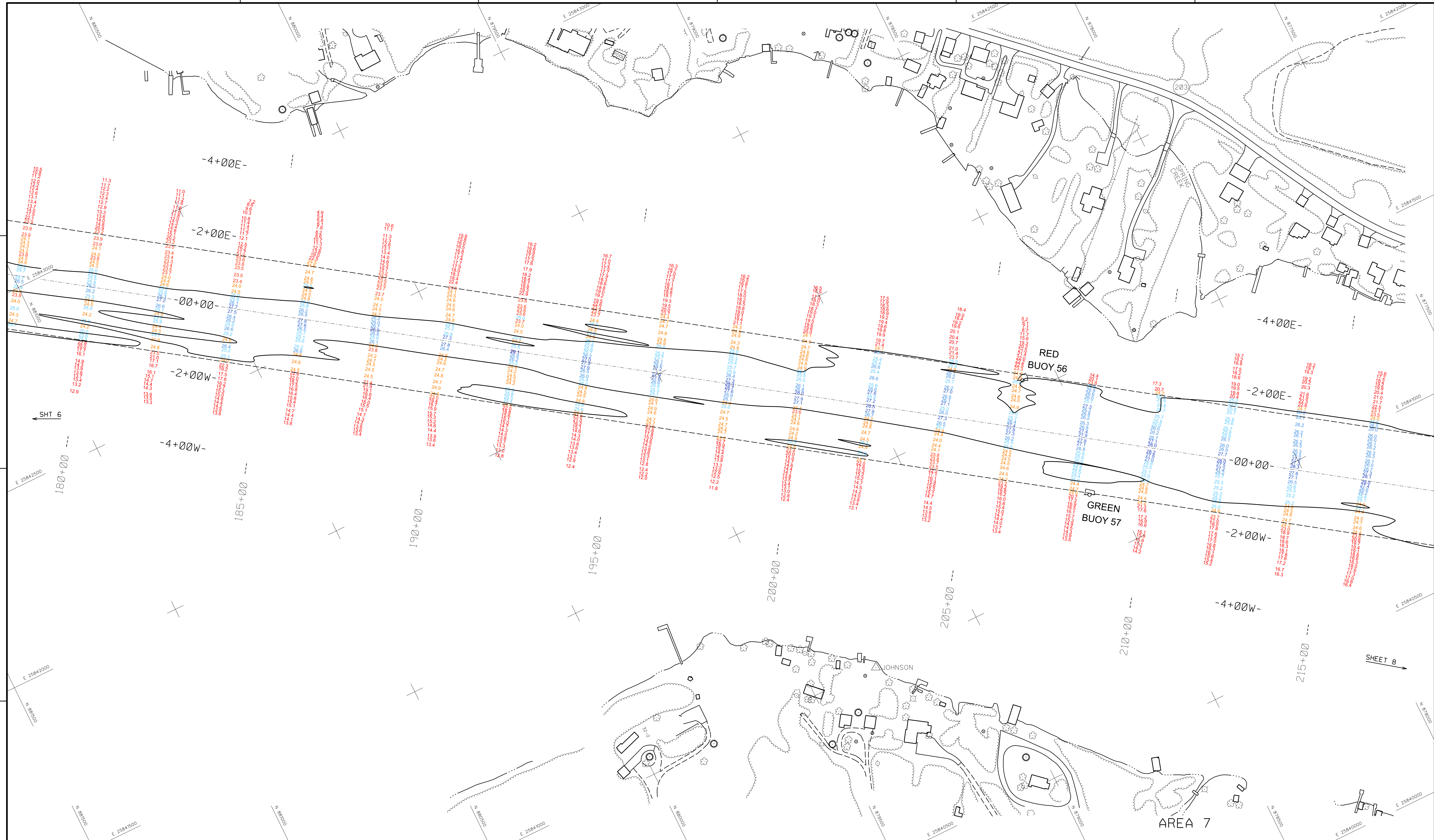
U.S. ARMY CORPS OF ENGINEERS  
DETROIT DISTRICT  
DETROIT, MI

FILE NAME: 17-00  
DRAWN DATE: 11/14/16  
DATE: 11/14/16  
SCALE: 1" = 100'

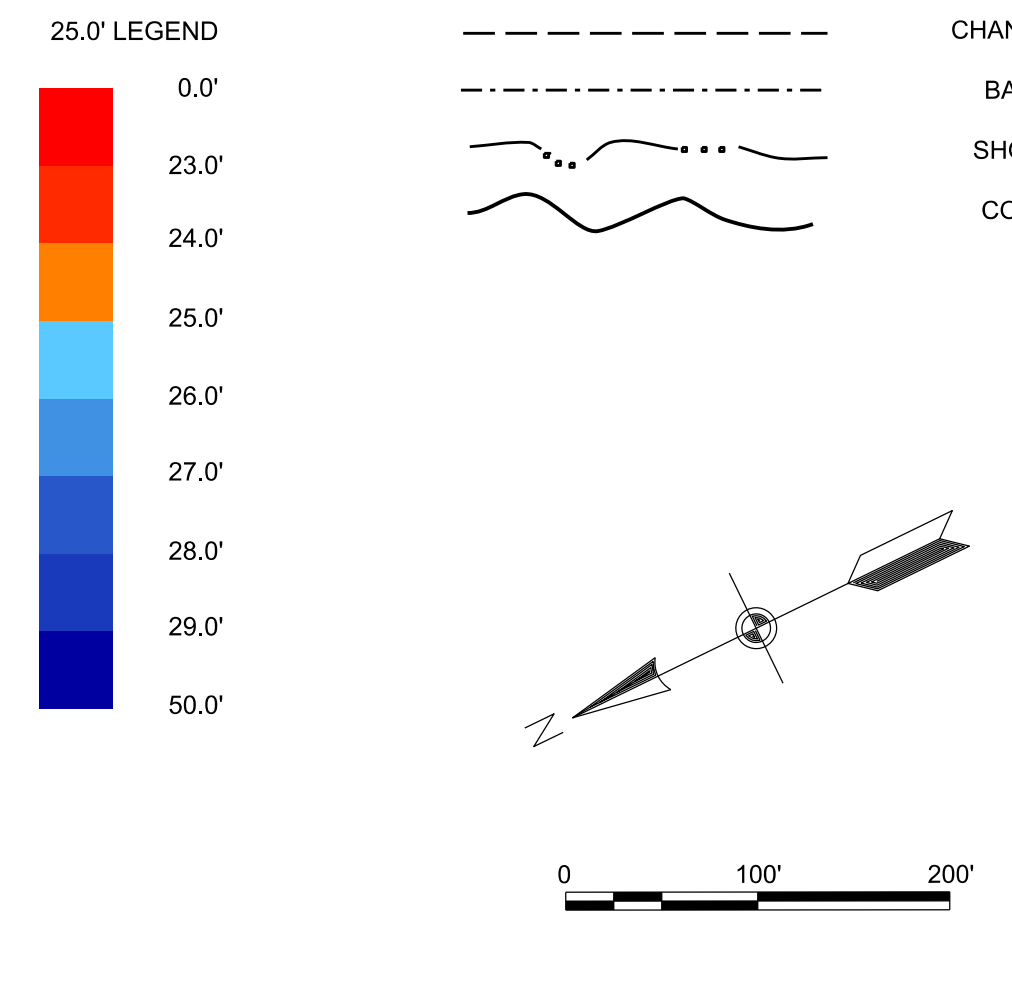
PROJECT: NEWEENAW WATERWAY  
MICHIGAN

CONDITION OF CHANNEL  
JUNE 2018

SHEET IDENTIFICATION  
KWW 07



- NOTES
1. THE INFORMATION DEPICTED ON THIS MAP REPRESENTS THE RESULTS OF SURVEYS MADE ON JUNE 06, 2018 AND CAN ONLY BE CONSIDERED AS INDICATING THE GENERAL CONDITIONS PRESENT AT THE TIME.
  2. SOUNDING DEPTHS ARE REFERENCED TO INTERNATIONAL GREAT LAKES DATUM 1985 (IGLD 85) LOW WATER DATUM (LWD) ELEVATION IS 601.1 FEET ABOVE MEAN WATER LEVEL AT RIMOUSKI QUEBEC. WATER LEVEL READINGS WERE OBTAINED WITH RTK GPS VALUES. DEPTHS ARE MEASURED USING A ROSS 8288 SINGLE BEAM DEPTH SOUNDER.
  3. HORIZONTAL POSITIONING IS DETERMINED USING REAL TIME KINEMATIC (RTK) GLOBAL NAVIGATION SATELLITE SYSTEM (GNSS) CORRECTIONS FROM A BASE STATION LOCATED AT US ARMY CORPS OF ENGINEERS (USACE) CONTROL POINT 103. A BRASS DISK STAMPED "NEWMAN 1991" SET IN CONCRETE AT THE BASE OF NAVIGATION AID NUMBER 88 AT THE END OF A PIER, ON THE SOUTH EAST SIDE OF LILY POND. THE GPS RECEIVER IS MANUFACTURED BY APPLIX MARINE POSNAV VER. 4.0.
  4. GRID COORDINATES ARE BASED ON THE MICHIGAN STATE PLANE COORDINATE SYSTEM, LAMBERT PROJECTION, MICHIGAN NORTH ZONE (2111), NORTH AMERICAN DATUM (NAD83). ALL COORDINATES SHOWN ARE IN U.S. SURVEY FEET.
  5. THE PROJECT DEPTH FOR THIS AREA IS 25'.



COORDINATE TABLE

STATION	DESCRIPTION	NORTHING	EASTING
BARTON	ALUM. CAP	888261.836	25842098.923
COF	BRASS CAP	882674.493	25841517.747
JOHNSON	ALUM. CAP	879312.935	25840936.461
SCORSE	ALUM. CAP	877888.888	25838778.571
RED 1+668	NAVIC. AD	885448.389	25844448.381
RED 1+668	NAVIC. AD	888418.659	25844436.362
CENTER 1+1	NAVIC. AD	882658.951	25841380.118
PT 27	E. CHANNEL LINE	881476.5	25843549.5
PT 28	E. CHANNEL LINE	879797.0	25843727.3
PT 31	E. CHANNEL LINE	875218.5	25843757.4
PT 33	E. CHANNEL LINE	874453.0	25838977.0
PT 35	E. CHANNEL LINE	873806.2	25838848.8
PT 37	E. CHANNEL LINE	872833.2	25838233.8
PT 38	E. CHANNEL LINE	872846.1	25840782.5
PT 39	E. CHANNEL LINE	864544.3	2584472.9
PT D	CENTERLINE	881548.2	25842411.2
PT E	CENTERLINE	874501.8	25838532.2
PT H	CENTERLINE	873475.0	25838571.6
PT 29	W. CHANNEL LINE	881151.8	25840203.2
PT 30	W. CHANNEL LINE	881151.8	25840203.2
PT 32	W. CHANNEL LINE	876143.8	25838585.4
PT 34	W. CHANNEL LINE	875438.8	25838582.4
PT 36	W. CHANNEL LINE	874615.3	25838383.8
PT 38	W. CHANNEL LINE	874161.6	25838378.6
PT 40	W. CHANNEL LINE	872758.0	2584018.1

