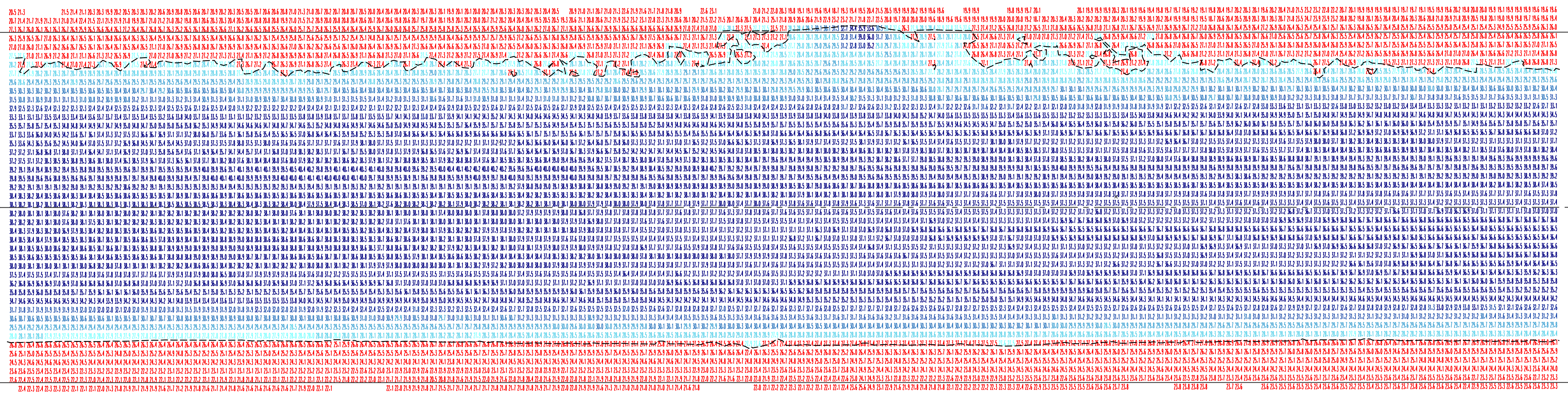


E 1395000
N 362000

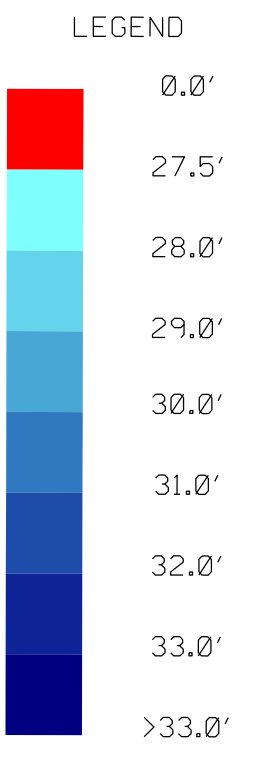
E 13954000
N 362000

604+00 610+00 620+00 25 630+00 639+00

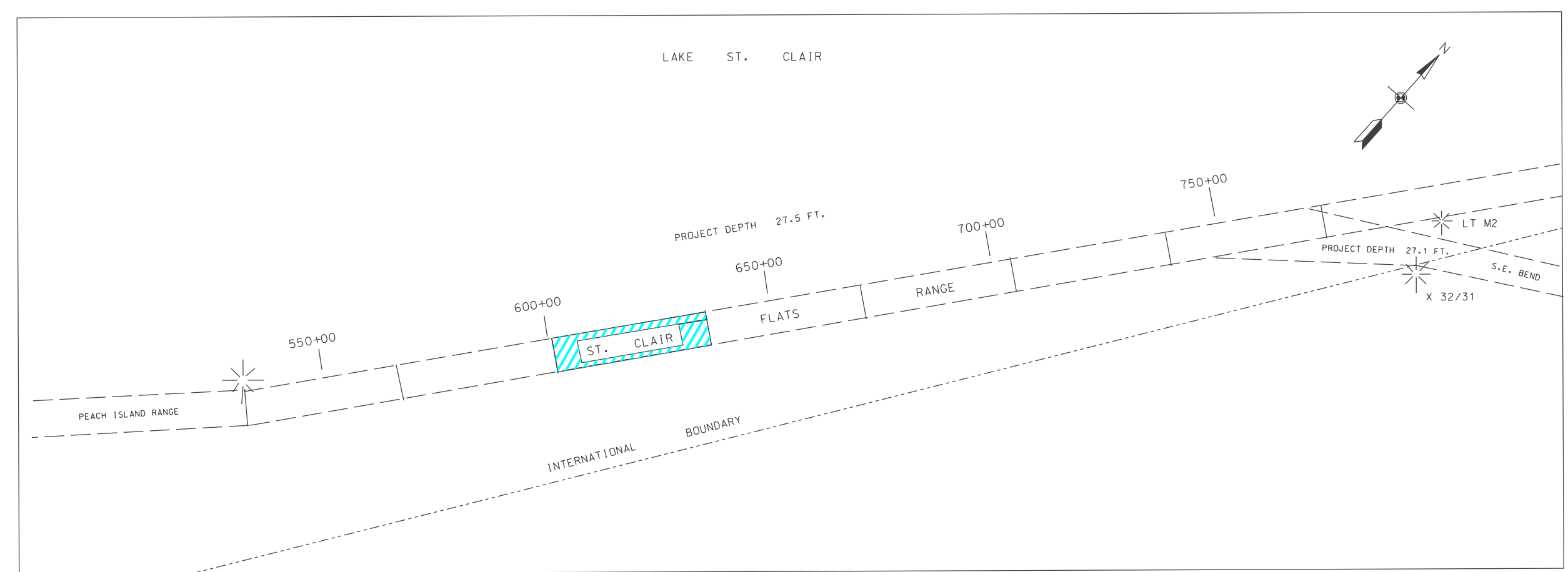
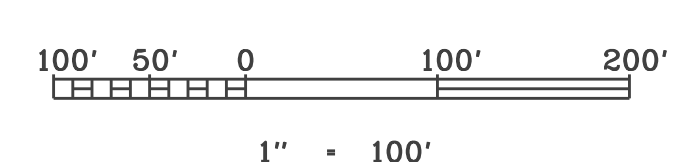


PROJECT DEPTH 27.5 FT.

E 1395000
N 362000



27.5 Ft. PROJECT DEPTH CONTOUR



THE SOUNDINGS INDICATED HEREON REPRESENT THE MINIMUM DEPTH FOUND IN THE 20 FOOT BY 20 FOOT AREA CENTERED AROUND THE TEXT. MINIMUM DEPTH DATA IS PRODUCED FOR STRIKE/SWATH REMOVAL OPERATIONS AND NOTICES TO NAVIGATION INTERESTS.

TIDE VALUES USED WERE OBTAINED FROM THE NOAA GAUGE "ST CLAIR SHORES" (#9034052) AND REFERENCED TO IGLD OF 1985. LOW WATER DATUM = 569.2.

THE INFORMATION DEPICTED ON THIS MAP REPRESENTS THE RESULTS OF SURVEYS MADE ON THE DATE INDICATED HEREON AND CAN ONLY BE CONSIDERED AS INDICATING THE GENERAL CONDITIONS PRESENT AT THE TIME OF SURVEY.

NOTES

- HORIZONTAL POSITIONING IS DETERMINED USING THE DIFFERENTIAL GLOBAL POSITIONING SYSTEM (DGPS). THE DIFFERENTIAL CORRECTIONS ARE PROVIDED BY U.S. COAST GUARD DIFFERENTIAL BROADCAST STATIONS. SIGNAL STRENGTH IS USED AS THE DETERMINING FACTOR IN DIFFERENTIAL SELECTION. THE DGPS RECEIVER IS MANUFACTURED BY APPLANIX MARINE MODEL POS/MV VER 4.0.
- GRID COORDINATES ARE BASED ON THE MICHIGAN STATE PLANE COORDINATE SYSTEM UTMBERT PROJECTION, MICHIGAN SOUTH ZONE (2113), NORTH AMERICAN DATUM 1983 (NAD83). ALL COORDINATES SHOWN ARE IN U.S. SURVEY FEET.
- UNLESS OTHERWISE NOTED PROJECT DEPTH IS 27.5' BELOW LWD.

NO.	DATE	REVISION	BY
U.S. ARMY ENGINEER DISTRICT, DETROIT CORPS OF ENGINEERS DETROIT, MICHIGAN			
DRAWN BY: BR		06 October 2015	
CHECKED BY: CVL		LAKE ST. CLAIR, MICHIGAN ST CLAIR FLATS RANGE C.S. 604+00 TO C.S. 639+00 CONDITION SURVEY	
SCALE AS SHOWN		DRAWING NUMBER	
SHEET 03 OF 06			