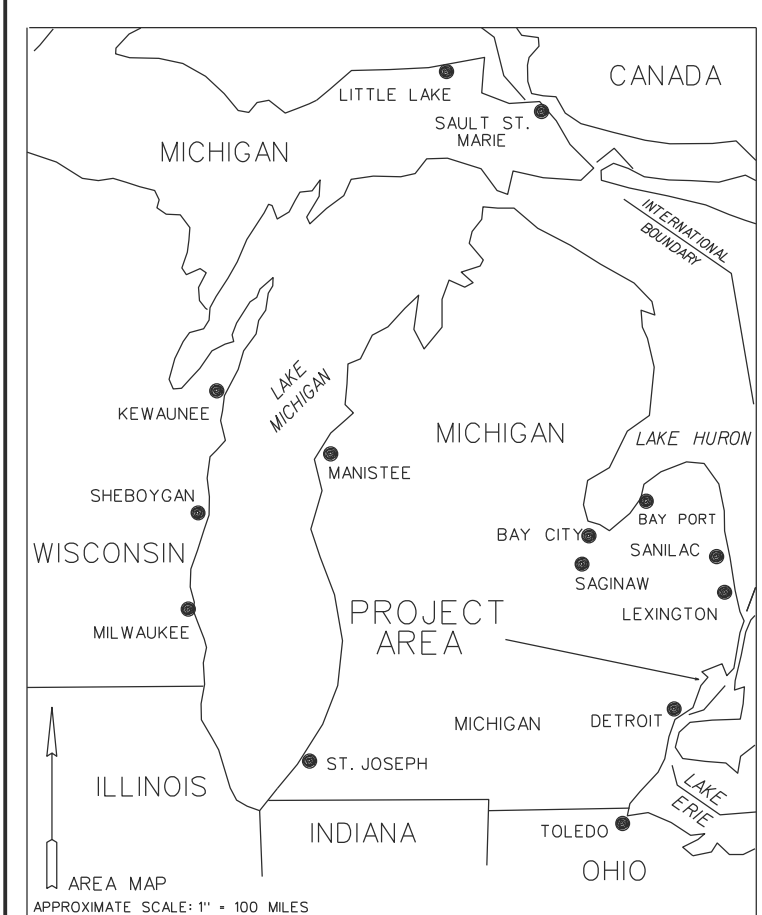
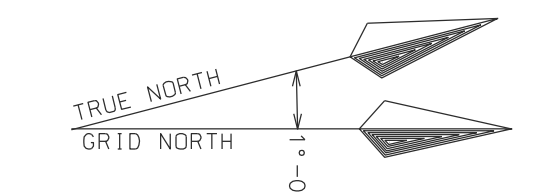
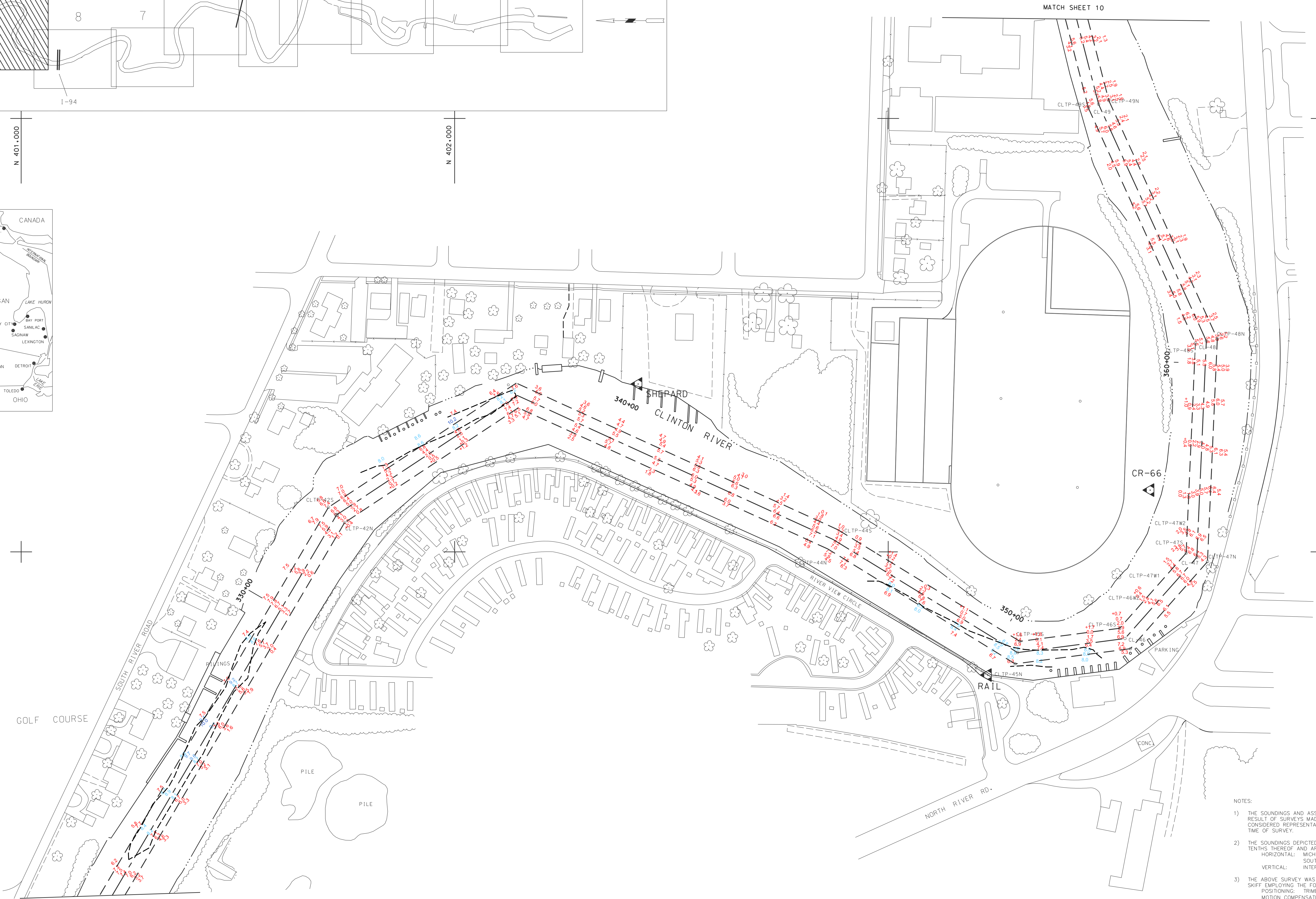


E 13.527.000 N 401.000 N 402.000 N 403.000 N 404.000 E 13.527.000



E 13.528.000 E 13.528.000



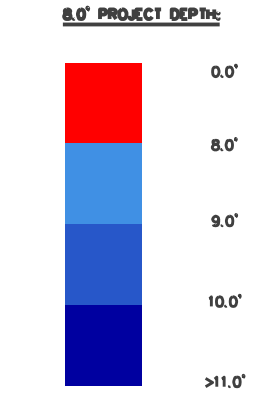
GRID SCALE FACTOR: 0.99991949
GRID DIST. DIVIDED BY GRID SCALE FACTOR = GROUND DIST.

CENTER LINE T.P.		
T.P.	EAST	NORTH
42	13,527,914.88	401,727.48
43	13,527,639.07	402,144.48
44	13,527,971.04	402,872.26
45	13,528,232.41	403,298.44
46	13,528,199.86	403,546.28
47	13,528,012.69	403,711.99
48	13,527,513.22	403,733.98
49	13,526,967.20	403,485.38

CHANNEL LINE T.P.		
T.P.	EAST	NORTH
42N	13,527,932.55	401,746.09
42S	13,527,897.21	401,708.88
43N	13,527,667.57	402,146.72
43S	13,527,610.57	402,142.25
44N	13,527,993.15	402,860.49
44S	13,527,948.93	402,884.02
45N	13,528,258.35	403,292.91
45S	13,528,206.47	403,303.96
46N	13,528,223.45	403,558.81
46S	13,528,176.29	403,533.76
46W1	13,528,186.72	403,454.38
46W2	13,528,116.34	403,586.83
47N	13,528,022.64	403,736.58
47S	13,528,002.75	403,687.40
47W1	13,528,060.32	403,634.67
47W2	13,527,923.27	403,690.90
48N	13,527,508.32	403,759.22
48S	13,527,518.11	403,708.74
49N	13,526,958.85	403,509.04
49S	13,526,975.57	403,461.73

- NOTES:
- THE SOUNDINGS AND ASSOCIATED INFORMATION REPRESENTED HEREIN ARE THE RESULT OF SURVEYS MADE ON THE DATE AS INDICATED AND CAN ONLY BE CONSIDERED REPRESENTATIVE OF THE GENERAL CONDITIONS EXISTING AT THE TIME OF SURVEY.
 - THE SOUNDINGS DEPICTED HEREIN ARE EXPRESSED IN U.S. SURVEY FEET AND TENTHS THEREOF AND ARE REFERENCED TO THE FOLLOWING DATUMS:
HORIZONTAL: MICHIGAN STATE PLANE COORDINATE SYSTEM, MICHIGAN SOUTH ZONE #213, NORTH AMERICAN DATUM (NAD) OF 1983.
VERTICAL: INTERNATIONAL GREAT LAKES DATUM (IGLD) OF 1985.
 - THE ABOVE SURVEY WAS CONDUCTED USING THE U.S.A.C.E. SURVEY VESSEL SKIFF EMPLOYING THE FOLLOWING COMPONENTS:
POSITIONING: TRIMBLE BLUE DOPS
MOTION COMPENSATION: N/A
SONAR: ODOM CO-300
SOFTWARE: HYPACK 2015
 - TIDE GAUGE USED WERE REFERENCED FROM A GAGE BOARD SET ON PILING NEAR THE MOUTH OF THE CLINTON RIVER ON THE EAST SIDE OF THE DNR DOCK, IN FRONT OF THE DNR FISHERIES BUILDING.
L.W.D. = 572.3

HORIZONTAL CONTROL		
STATION	COORDINATES	
	EAST	NORTH
SHEPARD	13,527,613.70	402,423.27
RAIL	13,528,284.18	403,229.41
CR-66	13,527,857.54	403,604.36



0.0 B.F. PROJECT DEPTH CONTOUR

 US ARMY CORPS OF ENGINEERS DETROIT DISTRICT	UNITED STATES ARMY CORPS OF ENGINEERS DETROIT AREA OFFICE, DETROIT, MICHIGAN
	CONDITION SURVEY CLINTON RIVER, MI CS 322+00W TO CS 368+00W
DRAWN BY: B.R.	DATE OF SURVEY: 31 MAY 2017
CHECKED BY: C.V.L.	SCALE 1" = 100'
SHEET 9 OF 10	

E 13.529.000 N 401.000 N 402.000 N 403.000 N 404.000 E 13.529.000