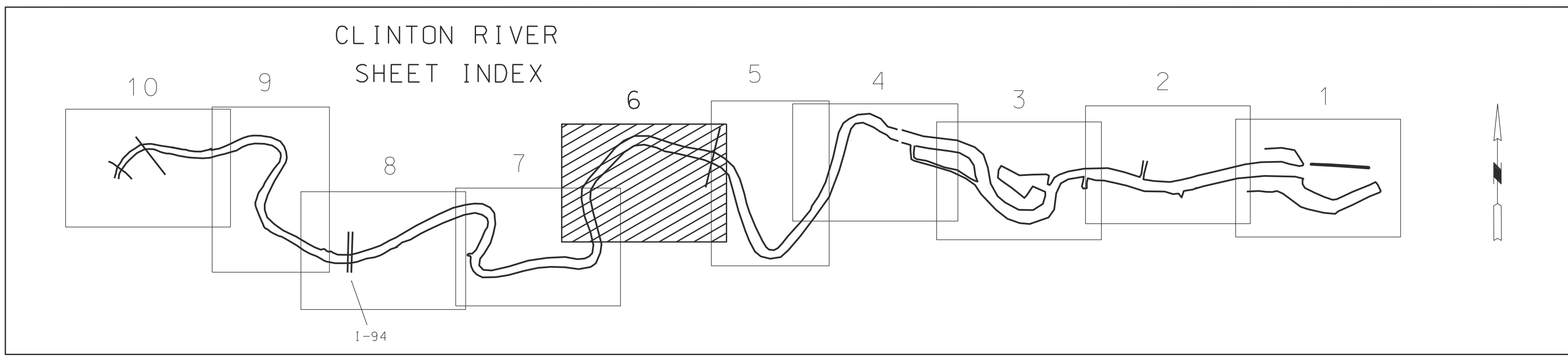
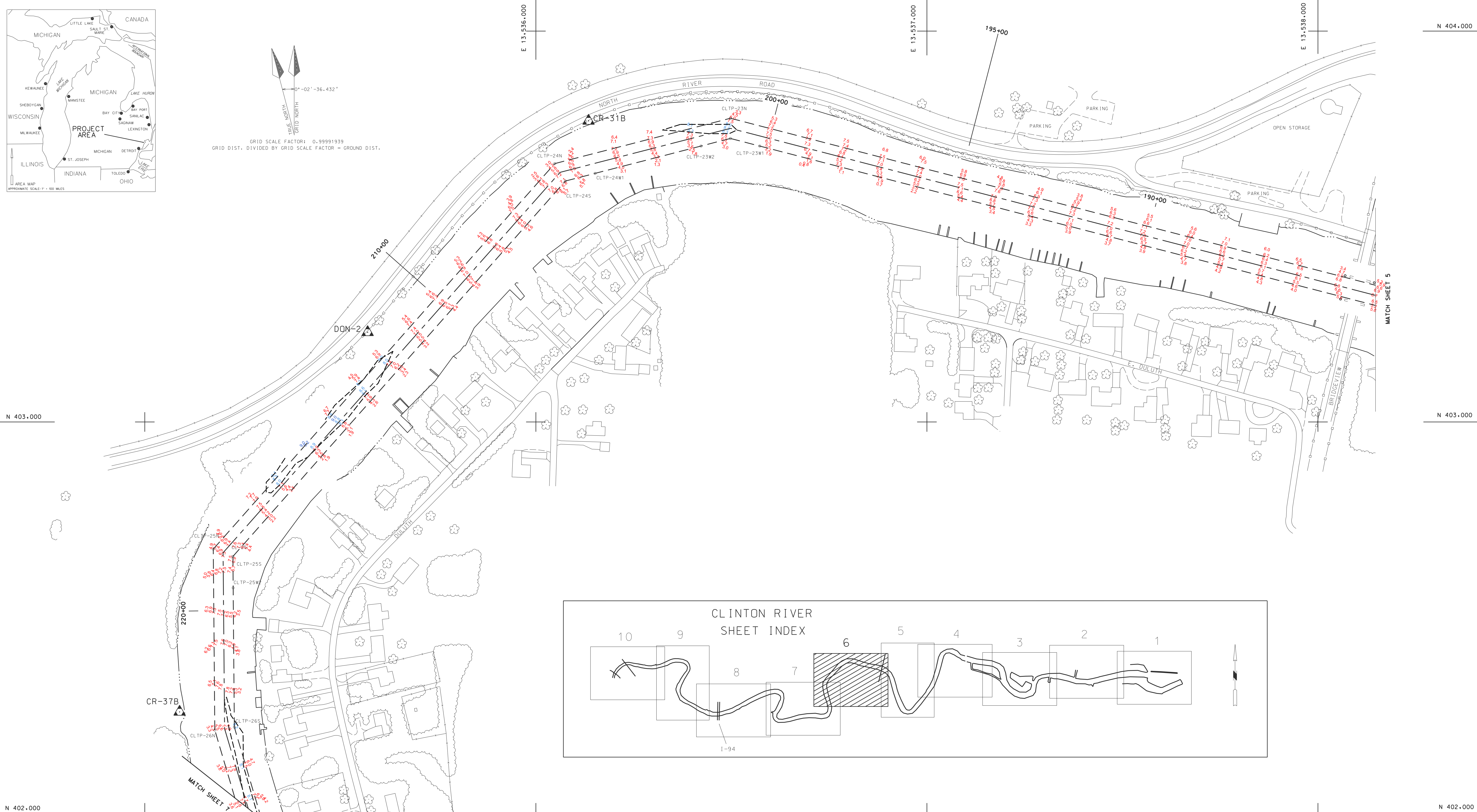




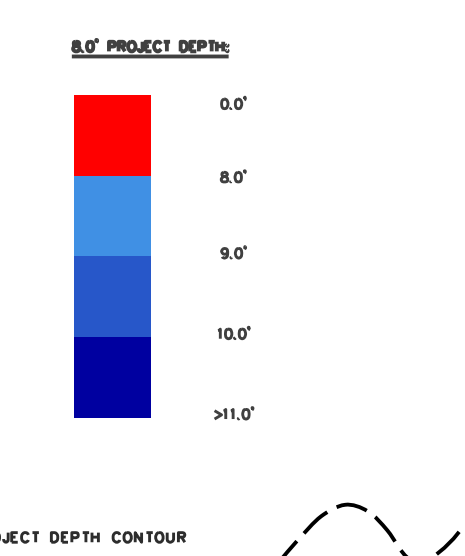
GRID SCALE FACTOR: 0.99991939
 GRID DIST. DIVIDED BY GRID SCALE FACTOR = GROUND DIST.



CENTER LINE T.P.		
T.P.	EAST	NORTH
23	13,536,497.48	403,751.11
24	13,536,061.82	403,638.61
25	13,535,200.16	402,665.38
26	13,535,203.94	402,215.45

CHANNEL LINE T.P.		
T.P.	EAST	NORTH
23N	13,536,497.49	403,776.94
23S	13,536,497.47	403,725.29
23W1	13,536,572.46	403,705.87
23W2	13,536,422.47	403,705.92
24N	13,536,048.17	403,660.91
24S	13,536,075.47	403,616.32
24W1	13,536,151.39	403,635.92
24W2	13,536,023.49	403,557.60
25N	13,535,175.08	402,674.77
25S	13,535,225.24	402,655.99
25W1	13,535,278.49	402,716.14
25W2	13,535,225.91	402,575.67
26N	13,535,178.97	402,231.72
26S	13,535,228.91	402,219.17

- NOTES:
- THE SOUNDINGS AND ASSOCIATED INFORMATION REPRESENTED HEREIN ARE THE RESULT OF SURVEYS MADE ON THE DATE AS INDICATED AND CAN ONLY BE CONSIDERED REPRESENTATIVE OF THE GENERAL CONDITIONS EXISTING AT THE TIME OF SURVEY.
 - THE SOUNDINGS DEPICTED HEREIN ARE EXPRESSED IN U.S. SURVEY FEET AND TENTHS THEREOF AND ARE REFERENCED TO THE FOLLOWING DATUMS:
 HORIZONTAL: MICHIGAN STATE PLANE COORDINATE SYSTEM, MICHIGAN SOUTH ZONE #213, NORTH AMERICAN DATUM (NAD) OF 1983.
 VERTICAL: INTERNATIONAL GREAT LAKES DATUM (IGLD) OF 1985.
 - THE ABOVE SURVEY WAS CONDUCTED USING THE U.S.A.C.E. SURVEY VESSEL SKIFF EMPLOYING THE FOLLOWING COMPONENTS:
 POSITIONING: TRIMBLE BLUE DIPS
 MOTION COMPENSATION: N/A
 SONAR: ODOM CV-300
 SOFTWARE: HYPACK 2015
 - TIDE GAGE USED WERE REFERENCED FROM A GAGE BOARD SET ON PILING NEAR THE MOUTH OF THE CLINTON RIVER ON THE EAST SIDE OF THE DNR DOCK, IN FRONT OF THE DNR FISHERIES BUILDING.
 L.W.D. = 572.3



	UNITED STATES ARMY CORPS OF ENGINEERS DETROIT AREA OFFICE, DETROIT, MICHIGAN	
	CONDITION SURVEY CLINTON RIVER, MI CS 184+00W TO CS 224+00W	
DRAWN BY: B.R.	DATE OF SURVEY: 17 MAY 2017	
CHECKED BY: C.V.L.	SCALE 1" = 100' 	
		SHEET 6 OF 10