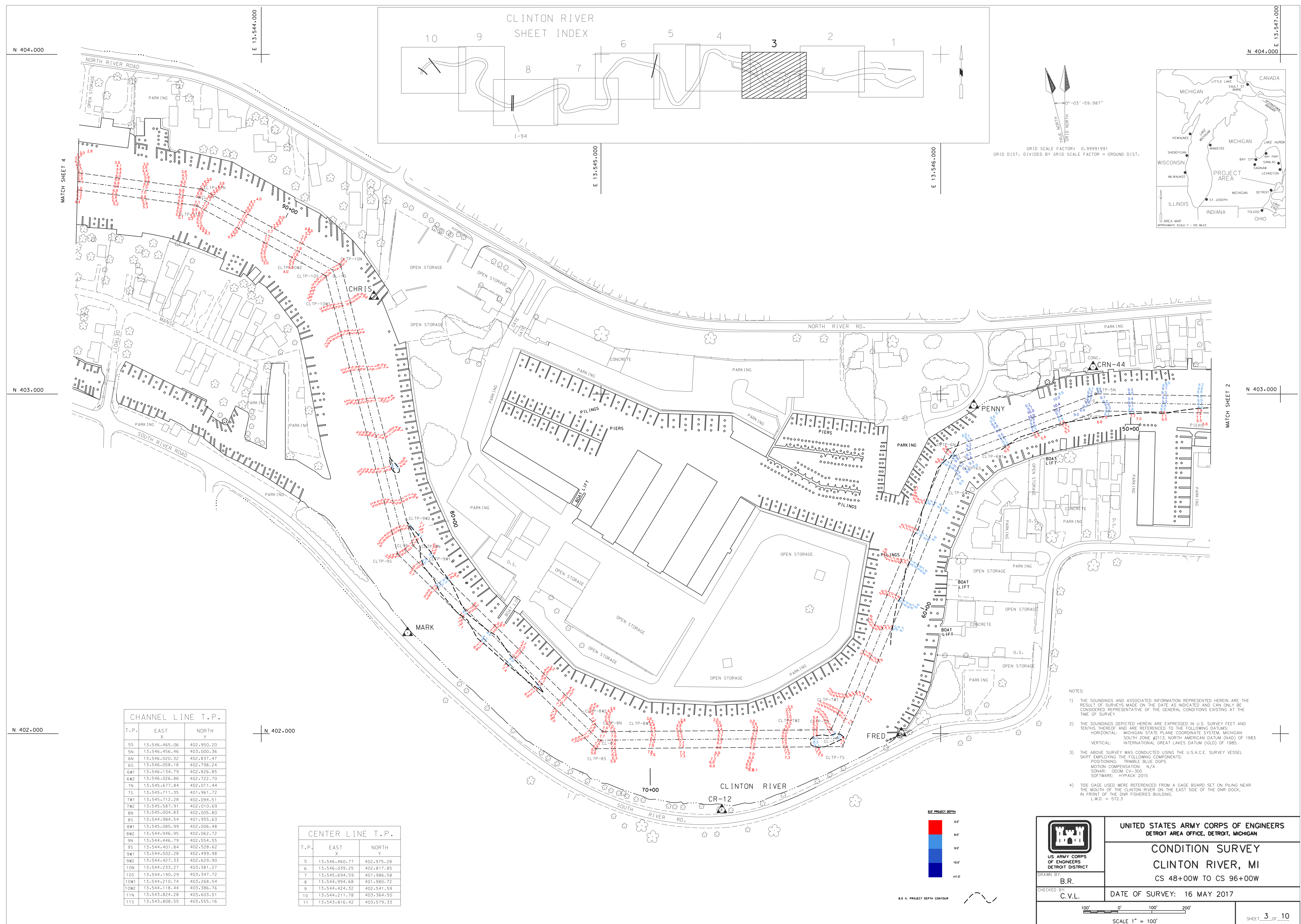


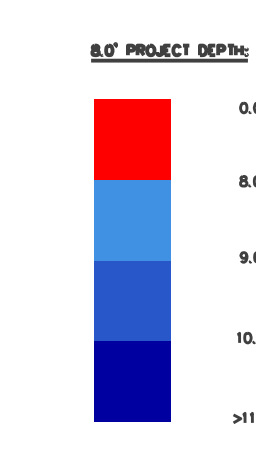
GRID SCALE FACTOR: 0.99991991
 GRID DIST. DIVIDED BY GRID SCALE FACTOR = GROUND DIST.



CHANNEL LINE T.P.		
T.P.	EAST X	NORTH Y
5S	13,546,465.06	402,950.20
5N	13,546,456.46	403,000.36
6N	13,546,020.32	402,837.47
6S	13,546,058.18	402,798.24
6W1	13,546,134.79	402,826.85
6W2	13,546,026.86	402,722.70
7N	13,545,677.84	402,011.44
7S	13,545,711.35	401,961.72
7W1	13,545,712.28	402,094.51
7W2	13,545,587.91	402,010.69
8N	13,545,004.83	402,005.80
8S	13,544,984.54	401,955.63
8W1	13,545,085.93	402,006.48
8W2	13,544,946.95	402,062.72
9N	13,544,446.79	402,554.95
9S	13,544,401.84	402,528.62
9W1	13,544,502.28	402,499.98
9W2	13,544,427.33	402,629.90
10N	13,544,233.27	403,381.27
10S	13,544,190.29	403,347.72
10W1	13,544,210.74	403,268.54
10W2	13,544,118.44	403,386.76
11N	13,543,824.28	403,603.51
11S	13,543,808.55	403,555.16

CENTER LINE T.P.		
T.P.	EAST X	NORTH Y
5	13,546,460.77	402,975.28
6	13,546,039.25	402,817.85
7	13,545,694.59	401,986.58
8	13,544,934.68	401,980.72
9	13,544,424.32	402,541.59
10	13,544,211.78	403,364.50
11	13,543,816.42	403,579.33

- NOTES:
- 1) THE SOUNDINGS AND ASSOCIATED INFORMATION REPRESENTED HEREIN ARE THE RESULT OF SURVEYS MADE ON THE DATE AS INDICATED AND CAN ONLY BE CONSIDERED REPRESENTATIVE OF THE GENERAL CONDITIONS EXISTING AT THE TIME OF SURVEY.
 - 2) THE SOUNDINGS DEPICTED HEREIN ARE EXPRESSED IN U.S. SURVEY FEET AND TENTHS THEREOF AND ARE REFERENCED TO THE FOLLOWING DATUMS:
 HORIZONTAL: MICHIGAN STATE PLANE COORDINATE SYSTEM, MICHIGAN SOUTH ZONE #213, NORTH AMERICAN DATUM (NAD) OF 1983.
 VERTICAL: INTERNATIONAL GREAT LAKES DATUM (IGLD) OF 1985.
 - 3) THE ABOVE SURVEY WAS CONDUCTED USING THE U.S.A.C.E. SURVEY VESSEL SKIFF EMPLOYING THE FOLLOWING COMPONENTS:
 POSITIONING: TRIMBLE BLUE DGPS
 MOTION COMPENSATION: N/A
 SONAR: ODOM CV-300
 SOFTWARE: HYDRACK 2015
 - 4) TIDE GAUGE USED WERE REFERENCED FROM A GAUGE BOARD SET ON PILING NEAR THE MOUTH OF THE CLINTON RIVER ON THE EAST SIDE OF THE DNR DOCK, IN FRONT OF THE DNR FISHERIES BUILDING.
 L.W.D. = 572.3



UNITED STATES ARMY CORPS OF ENGINEERS
 DETROIT AREA OFFICE, DETROIT, MICHIGAN

CONDITION SURVEY
 CLINTON RIVER, MI
 CS 48+00W TO CS 96+00W

DRAWN BY: B.R.

CHECKED BY: C.V.L.

DATE OF SURVEY: 16 MAY 2017

SCALE 1" = 100'

SHEET 3 OF 10