

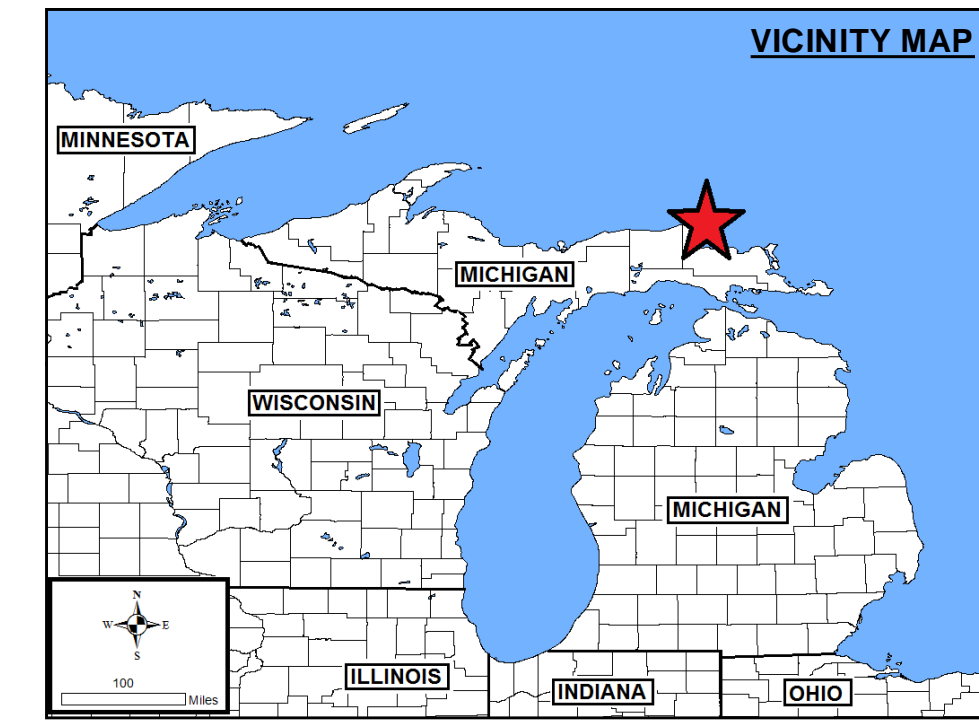
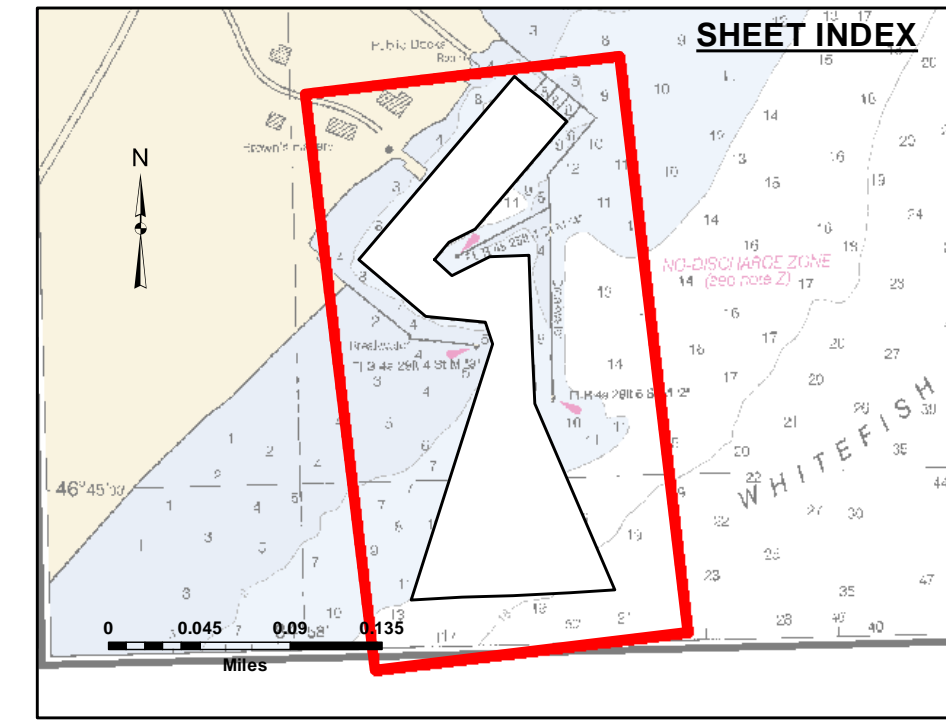
**Disclaimer:** The data represents the results of data collection for a specific project. The data is not intended for use in any other project. The user is responsible for the accuracy of the data for other than its intended purpose. The user is responsible for the accuracy of the data for other than its intended purpose.

**DISCLAIMER:** The United States Government furnishes this data and the recipient accepts and uses them with the express understanding that the data is not intended for use in any other project. The user is responsible for the accuracy of the data for other than its intended purpose. The user is responsible for the accuracy of the data for other than its intended purpose.

U.S. ARMY CORPS OF ENGINEERS DETROIT DISTRICT		
Submitted By:	Surveyed By:	
Recommended By:	Plotted By:	
Approved By:	Chief, Technical Services	

**Whitefish Point Harbor, MI**  
**Whitefish Point Harbor**  
**WT\_01\_FIS\_20230601\_CS**  
**01 June 2023**

**Sheet Reference Number**  
**1 of 1**

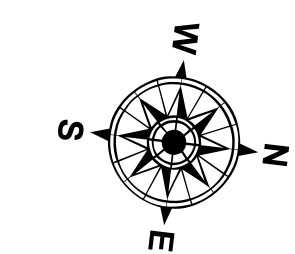


**LEGEND**

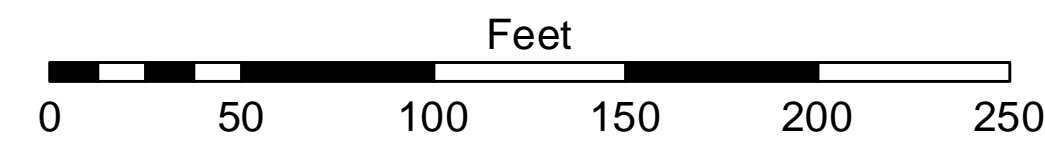
- ..... Cable Submarine
- - - Cable Overhead
- Placement Area
- ⊥ Beacon, General
- Contour Lines
- ▭ Channel Limits

**SOUNDING LEGEND**

- LESS THAN PROJECT DEPTH
- PROJECT DEPTH
- PROJECT DEPTH +1'
- PROJECT DEPTH +2'
- PROJECT DEPTH +3'
- PROJECT DEPTH +4'
- PROJECT DEPTH +5'



1 inch = 50 feet



**NOTES:**

1. THE INFORMATION DEPICTED ON THIS MAP REPRESENTS THE RESULTS OF SURVEYS CONDUCTED ON DATE LISTED AND CAN ONLY BE CONSIDERED AS INDICATING THE GENERAL CONDITIONS PRESENT AT THE TIME.
2. ELEVATIONS AND SOUNDING DEPTHS ARE REFERRED TO INTERNATIONAL GREAT LAKES DATUM 1985 (IGLD 85). LOW WATER DATUM ZERO IS 601.1 FEET ABOVE MEAN WATER LEVEL AT POINT RIMOUSKI QUEBEC. WATER LEVEL READINGS ARE FROM A TIDE GAUGE LOCATED ON THE EASTERN FACE OF THE STEEL SHEET PILE WALL USED FOR COMMERCIAL FISHING. DEPTHS ARE MEASURED USING A TELEDYNE ECHOTRAC E20 SINGLE BEAM ECHOSOUNDER.
3. HORIZONTAL POSITIONING IS DETERMINED USING A TRIMBLE TRIMBLE MPS865 WITH OMNISTAR GPS CORRECTIONS
4. GRID COORDINATES ARE BASED ON THE MICHIGAN STATE PLANE COORDINATE SYSTEM, LAMBERT PROJECTION, MICHIGAN NORTH ZONE (2111), NORTH AMERICAN DATUM 1983 (NAD83). ALL COORDINATES SHOWN ARE IN U.S. SURVEY FEET.
5. THE LOCATION OF NAVIGATION AIDS REPRESENT THEIR GENERAL LOCATION AND CANNOT BE CONSIDERED FOR NAVIGATION.
6. UNLESS OTHERWISE NOTED PROJECT DEPTH IS 12.0' BELOW LOW WATER DATUM.

Imagery Source: ESRI