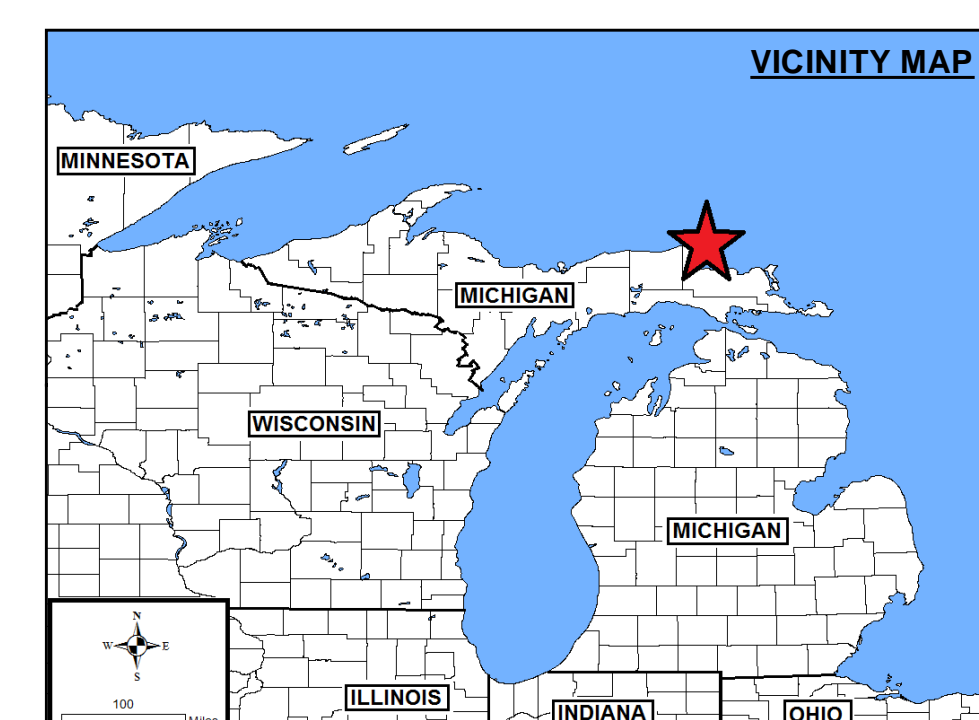
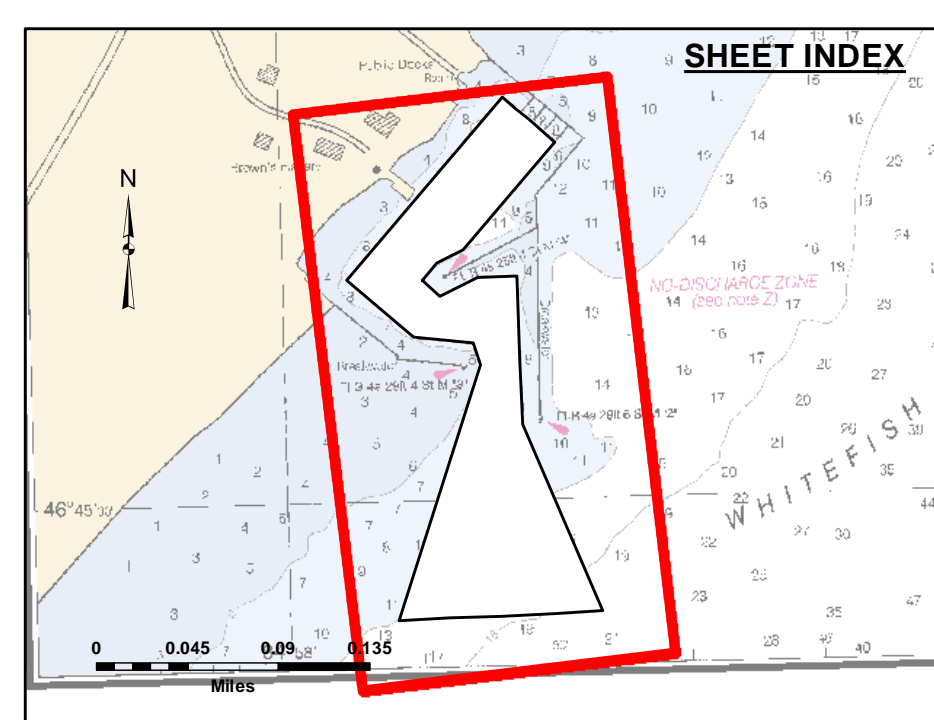


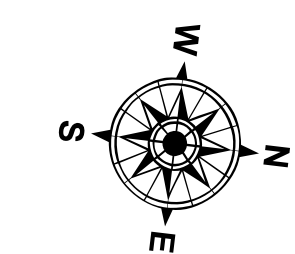
**DISCLAIMER:** The United States Government furnishes these data and the recipient accepts the results of data collection/processing for a specific US Army Corps of Engineers activity and releases the general existing conditions, reliability, usability or suitability for any particular purpose of the recipient. The United States Government is not responsible for the accuracy, completeness, or implied consequences of the data for other than its intended purpose. The recipient may not transfer these data to others without also transferring this Disclaimer.

U.S. ARMY CORPS OF ENGINEERS DETROIT DISTRICT		
Submitted:	Surveyed By:	
Recommended:	Plotted By:	
Approved:	Chief, Technical Services	

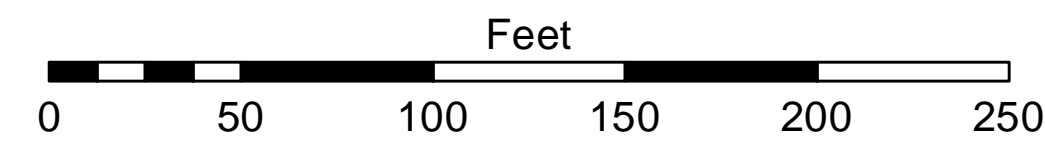


- LEGEND**
- ..... Cable Submarine
  - - - Cable Overhead
  - Placement Area
  - ⊥ Beacon, General
  - Contour Lines
  - ▭ Channel\_Limits

- SOUNDING LEGEND**
- LESS THAN PROJECT DEPTH
  - PROJECT DEPTH
  - PROJECT DEPTH +1'
  - PROJECT DEPTH +2'
  - PROJECT DEPTH +3'
  - PROJECT DEPTH +4'
  - PROJECT DEPTH +5'



1 inch = 50 feet



**NOTES:**

1. THE INFORMATION DEPICTED ON THIS MAP REPRESENTS THE RESULTS OF SURVEYS CONDUCTED ON DATE LISTED AND CAN ONLY BE CONSIDERED AS INDICATING THE GENERAL CONDITIONS PRESENT AT THE TIME.
2. ELEVATIONS AND SOUNDING DEPTHS ARE REFERRED TO INTERNATIONAL GREAT LAKES DATUM 1985 (IGLD 85). LOW WATER DATUM ZERO IS 601.1 FEET ABOVE MEAN WATER LEVEL AT POINT RIMOUSKI QUEBEC. WATER LEVEL READINGS ARE FROM A TIDE GAUGE LOCATED ON THE EASTERN FACE OF THE STEEL SHEET PILE WALL USED FOR COMMERCIAL FISHING. DEPTHS ARE MEASURED USING A TELEDYNE ECHOTRAC E20 SINGLE BEAM ECHOSOUNDER.
3. HORIZONTAL POSITIONING IS DETERMINED USING A TRIMBLE TRIMBLE MPS865 WITH OMNISTAR GPS CORRECTIONS
4. GRID COORDINATES ARE BASED ON THE MICHIGAN STATE PLANE COORDINATE SYSTEM, LAMBERT PROJECTION, MICHIGAN NORTH ZONE (211), NORTH AMERICAN DATUM 1983 (NAD83). ALL COORDINATES SHOWN ARE IN U.S. SURVEY FEET.
5. THE LOCATION OF NAVIGATION AIDS REPRESENT THEIR GENERAL LOCATION AND CANNOT BE CONSIDERED FOR NAVIGATION.
6. UNLESS OTHERWISE NOTED PROJECT DEPTH IS 12.0' BELOW LOW WATER DATUM.

Imagery Source: ESRI

**Whitefish Point Harbor, MI**  
**Whitefish Point Harbor**  
**WT\_01\_FIS\_20220629\_CS**  
**29 June 2022**

**Sheet Reference Number**  
**1 of 1**