

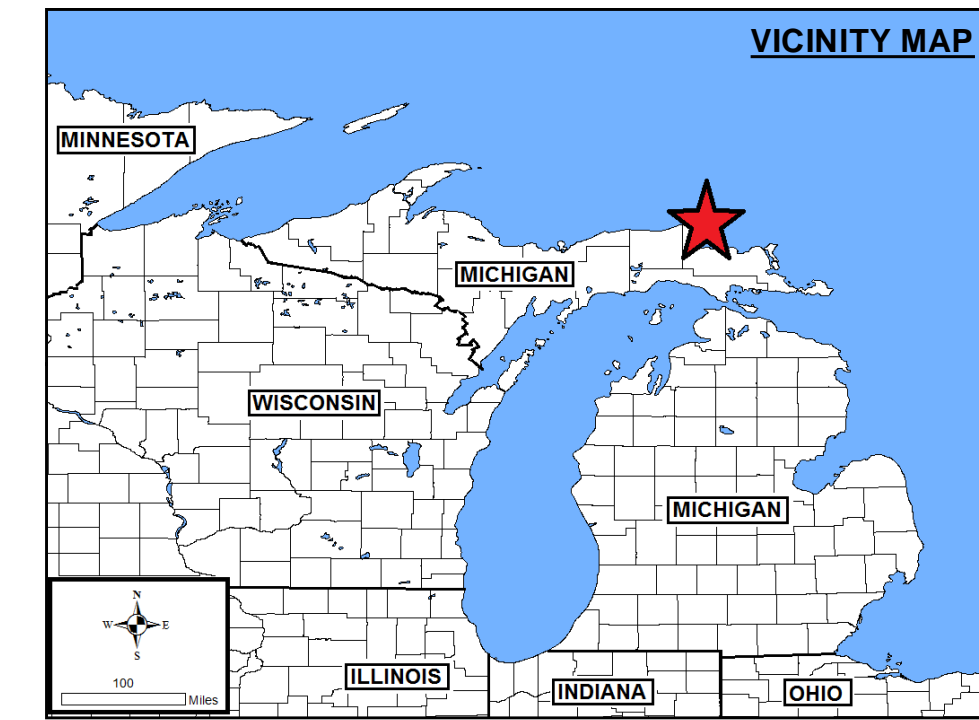
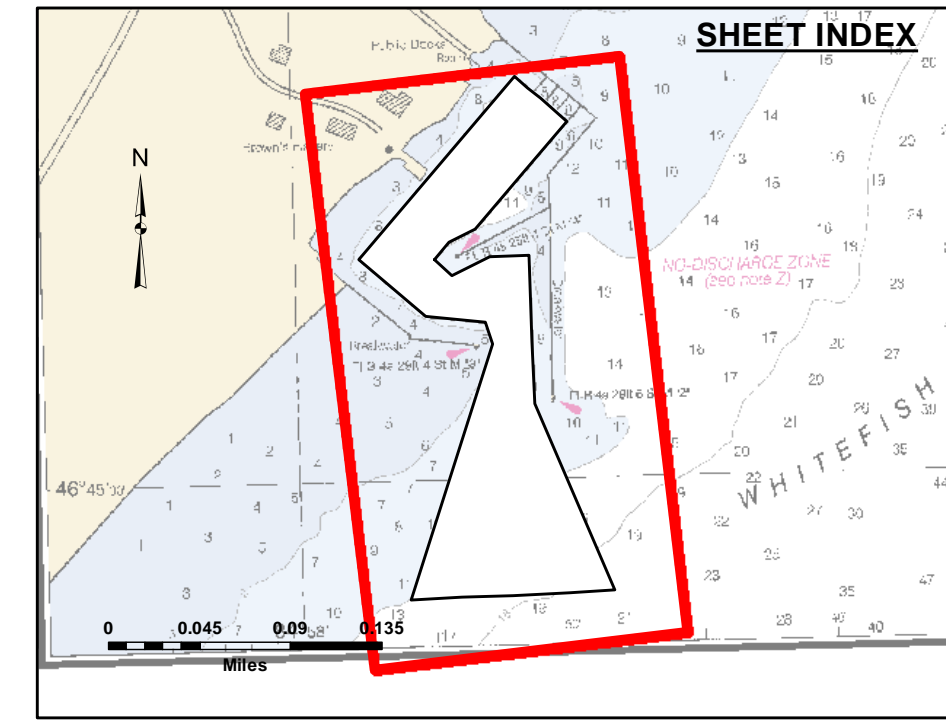
Disclaimer: The data represented by the symbols of data collection and processing for a specific US Army Corps of Engineers activity and indicates the general existing conditions. Engineers assume no liability for the accuracy, completeness, or reliability of any data for other than its intended purpose. The user is responsible for the accuracy of the data for other than its intended purpose.

DISCLAIMER: The United States Government furnishes these data and the recipient accepts them with the express understanding that they are not to be used for any purpose other than that for which they were prepared, or implied concerning the accuracy, completeness, or reliability of any data for other than its intended purpose. The user is responsible for the accuracy of the data for other than its intended purpose. These data being in the Government. Therefore the recipient may not transfer these data to others without also transferring this disclaimer.

U.S. ARMY CORPS OF ENGINEERS DETROIT DISTRICT		
Submitted:	Surveyed By:	
Recommended:	Plotted By:	
Approved:	Chief, Survey Section	
	Chief, Technical Services	

Whitefish Point Harbor, MI
Whitefish Point Harbor
WT_01_FIS_20200625_CS
25 June 2020

Sheet Reference Number
1 of 1

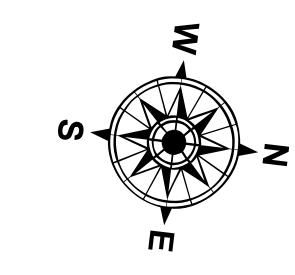


LEGEND

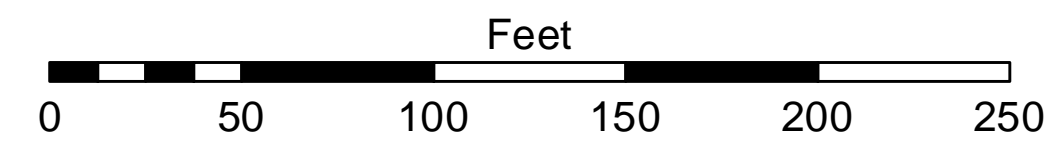
- Cable Submarine
- - - Cable Overhead
- Placement Area
- ⊥ Beacon, General
- Contour Lines
- ▭ Channel_Limits

SOUNDING LEGEND

- LESS THAN PROJECT DEPTH
- PROJECT DEPTH
- PROJECT DEPTH +1'
- PROJECT DEPTH +2'
- PROJECT DEPTH +3'
- PROJECT DEPTH +4'
- PROJECT DEPTH +5'



1 inch = 50 feet



NOTES:

1. THE INFORMATION DEPICTED ON THIS MAP REPRESENTS THE RESULTS OF SURVEYS CONDUCTED ON DATE LISTED AND CAN ONLY BE CONSIDERED AS INDICATING THE GENERAL CONDITIONS PRESENT AT THE TIME.
2. ELEVATIONS AND SOUNDING DEPTHS ARE REFERRED TO INTERNATIONAL GREAT LAKES DATUM 1985 (IGLD 85). LOW WATER DATUM ZERO IS 601.1 FEET ABOVE MEAN WATER LEVEL AT POINT RIMOUSKI QUEBEC. WATER LEVEL READINGS ARE FROM A TIDE GAUGE BOARD LOCATED ON THE EASTERN FACE OF THE STEEL SHEET POLE WALL USED FOR COMMERCIAL FISHING. DEPTHS ARE MEASURED USING AN ODOM ECHOTRAC E20 ECHOSOUNDER SINGLEBEAM SOUNDER.
3. HORIZONTAL POSITIONING IS DETERMINED USING A TRIMBLE SPS461 SUB-METER DGPS RECEIVER.
4. GRID COORDINATES ARE BASED ON THE MICHIGAN STATE PLANE COORDINATE SYSTEM, LAMBERT PROJECTION, MICHIGAN NORTH ZONE (2111), NORTH AMERICAN DATUM 1983 (NAD83). ALL COORDINATES SHOWN ARE IN U.S. SURVEY FEET.
5. THE LOCATION OF NAVIGATION AIDS REPRESENT THEIR GENERAL LOCATION AND CANNOT BE CONSIDERED FOR NAVIGATION.
6. UNLESS OTHERWISE NOTED PROJECT DEPTH IS 12.0' BELOW LOW WATER DATUM.

Imagery Source: ESRI