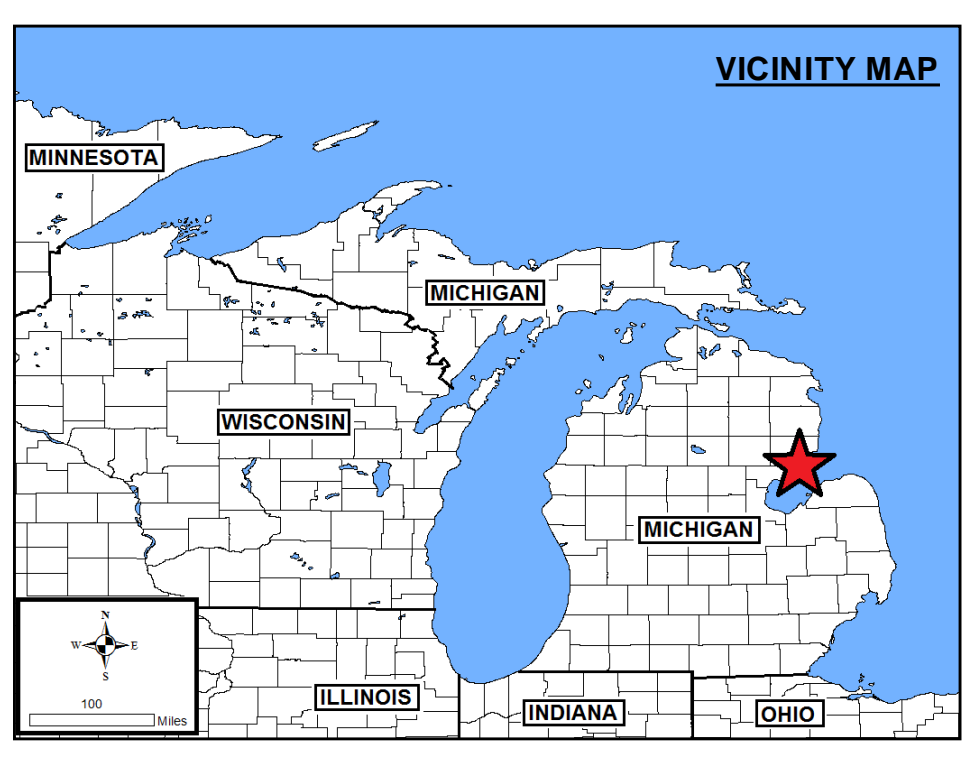
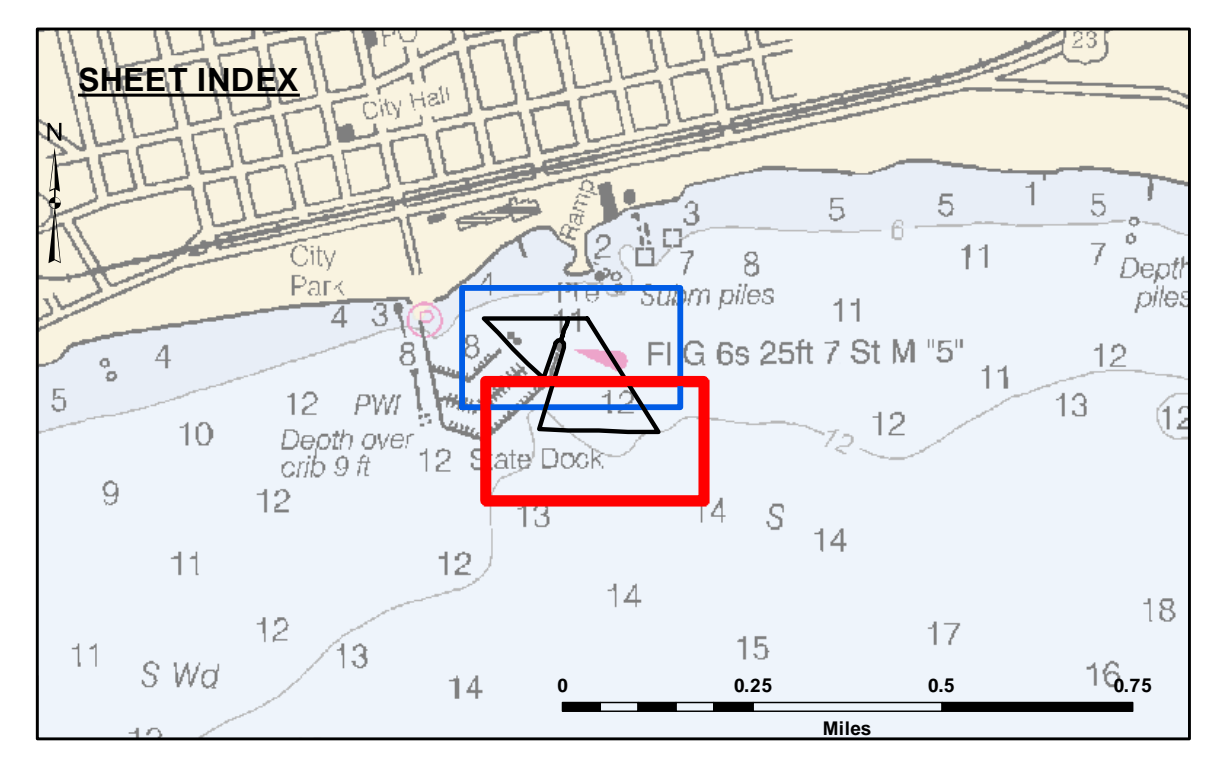


**DISCLAIMER:** The data represents the results of data collection and processing for a specific US Army Corps of Engineers activity and indicates the general existing conditions. The user is responsible for the accuracy, completeness, and reliability of the data for other than its intended purpose. The United States Government furnishes this data and the recipient accepts and uses them with the express understanding that the data is provided for informational purposes only. The data is not to be used for any purpose other than that for which it was intended. These data belong to the Government. Therefore the recipient may not transfer, reproduce, or disseminate this data to others without also transferring the Disclaimer.

U.S. ARMY CORPS OF ENGINEERS DETROIT DISTRICT		
Submitted:	Surveyed By:	
Recommended:	Printed By:	
Approved:	Checked By:	
	Chief, Survey Section	
	Chief, Technical Services	

Tawas Bay Harbor, MI  
Tawas Bay Harbor  
TA\_01\_WAS\_20211013\_CS  
13 October 2021

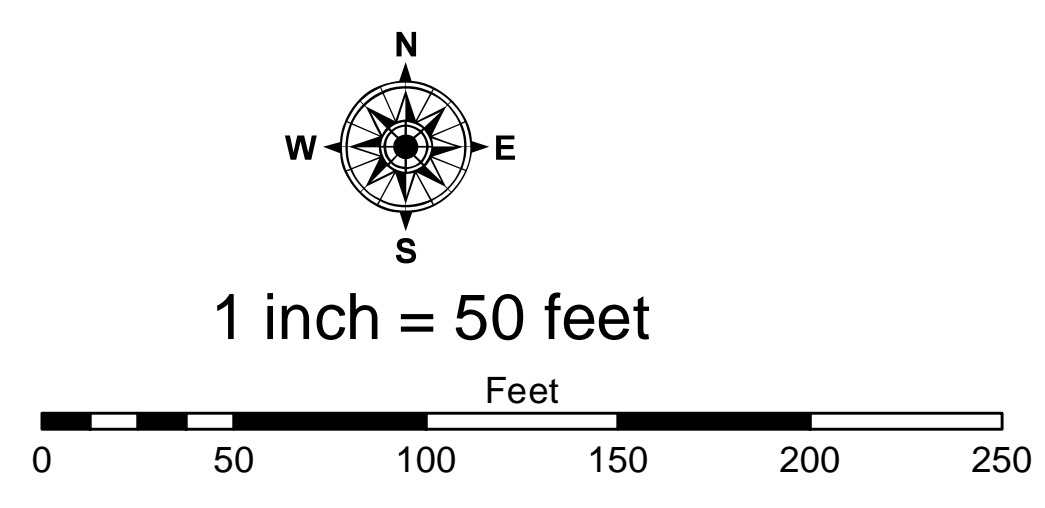


**LEGEND**

- ..... Cable Submarine
- - - Cable Overhead
- ⊥ Beacon, General
- Placement Areas
- Contour Lines
- ▭ Channel Limits

**SOUNDING LEGEND**

- Red: LESS THAN PROJECT DEPTH
- Light Blue: PROJECT DEPTH
- Medium Blue: PROJECT DEPTH +1'
- Dark Blue: PROJECT DEPTH +2'
- Very Dark Blue: PROJECT DEPTH +3'
- Black: PROJECT DEPTH +4'
- Dark Purple: PROJECT DEPTH +5'



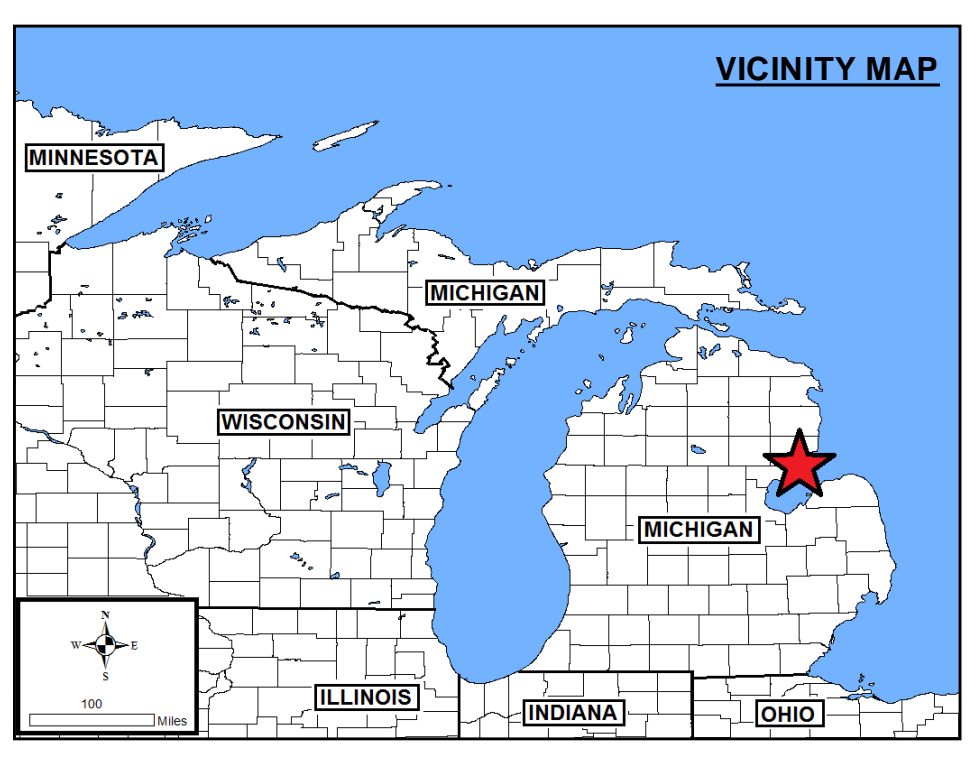
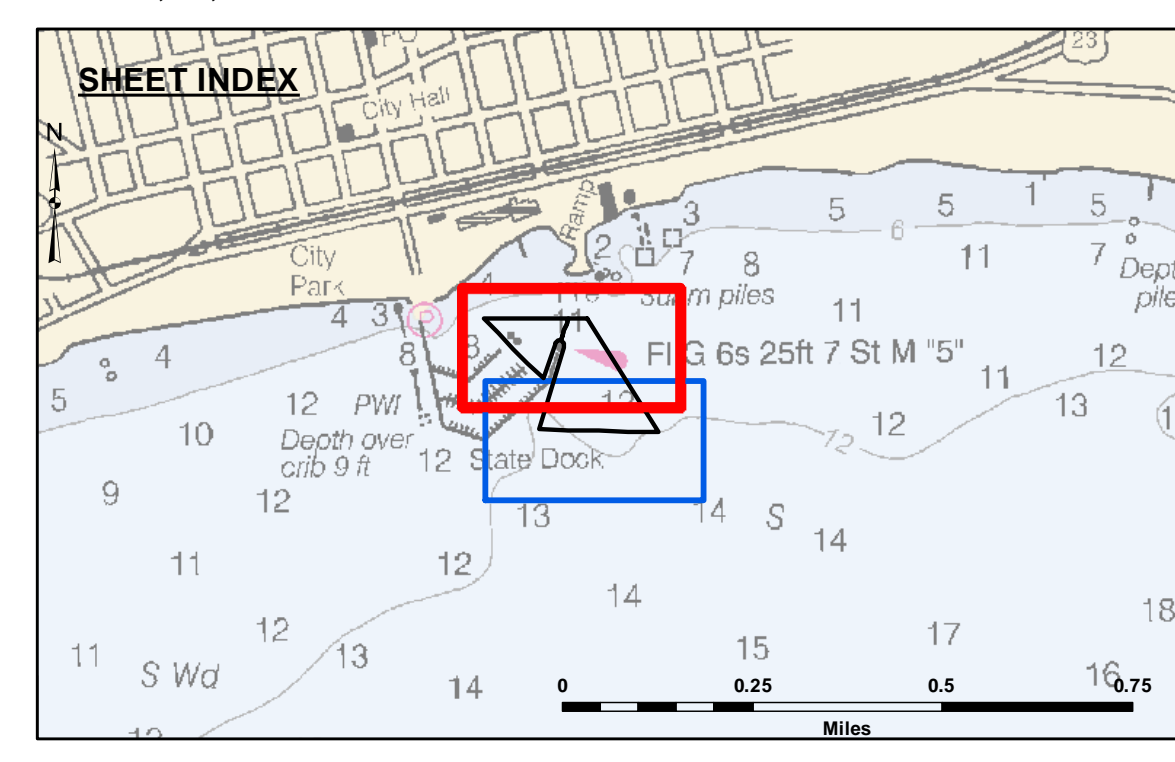
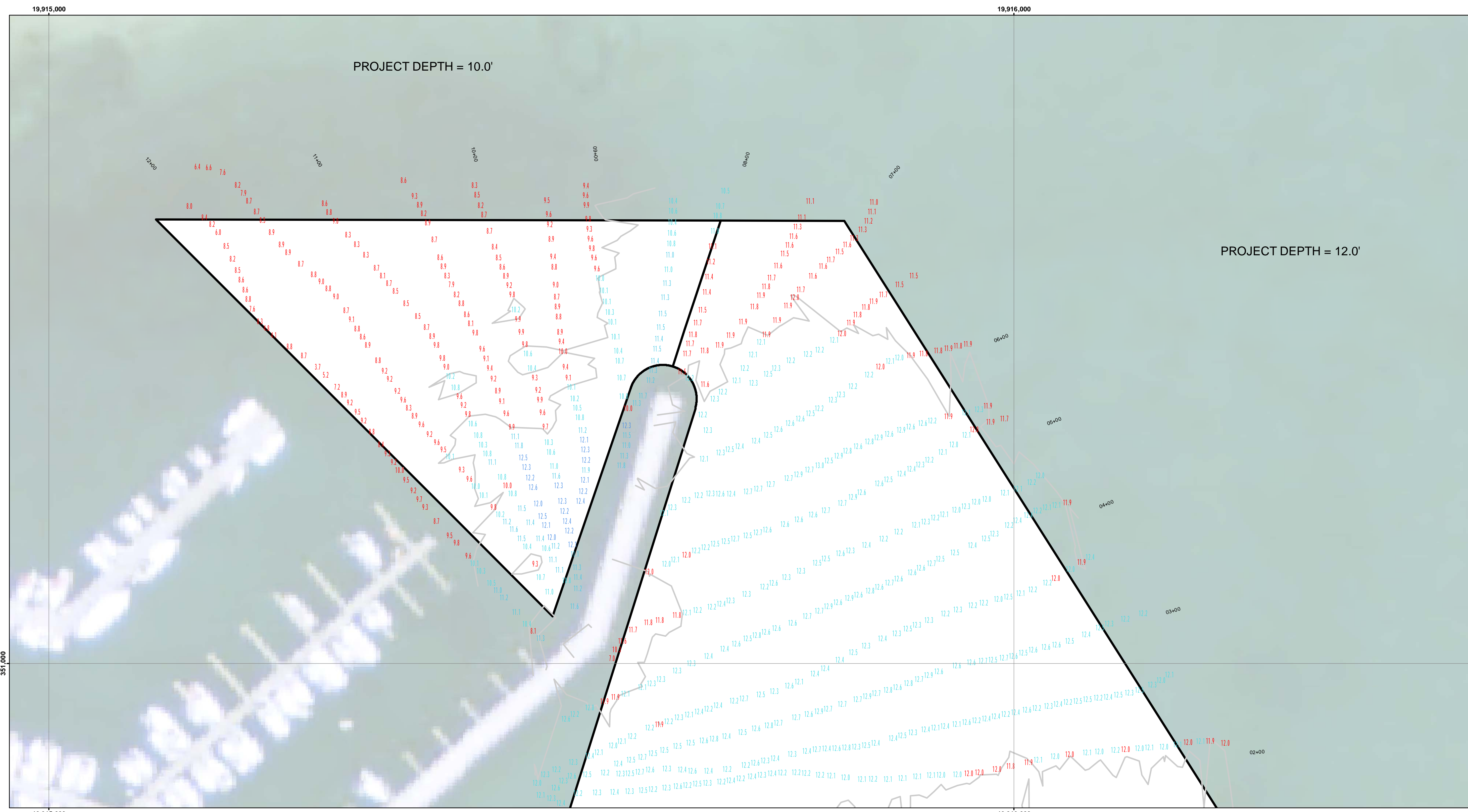
**NOTES:**

1. THE SOUNDINGS INDICATED HEREIN ARE GENERALIZED DEPTHS AND ARE NOT REPRESENTATIVE OF THE FULL DATASET.
2. ELEVATIONS AND SOUNDING DEPTHS ARE REFERRED TO INTERNATIONAL GREAT LAKES DATUM 1985 (IGLD 85). LOW WATER DATUM (LWD) ZERO IS 577.5 FEET ABOVE MEAN WATER LEVEL AT FATHER POINT QUEBEC.
3. THE INFORMATION DEPICTED ON THIS MAP REPRESENTS THE RESULTS OF SURVEYS MADE ON DATES INDICATED AND CAN ONLY BE CONSIDERED AS INDICATING THE GENERAL CONDITIONS PRESENT AT THE TIME.
4. HORIZONTAL POSITIONING IS DETERMINED BY APPLANIX POS MV4 WVR-RTK OR MARINESTAR G2+.
5. GRID COORDINATES ARE BASED ON THE MICHIGAN STATE PLANE COORDINATE SYSTEM, LAMBERT PROJECTION, MICHIGAN CENTRAL ZONE (2112). NORTH AMERICAN DATUM (NAD83). ALL COORDINATES SHOWN ARE IN U.S. SURVEY FEET.
6. UNLESS OTHERWISE NOTED PROJECT DEPTHS ARE 10.0 & 12.0 FEET BELOW LWD
7. VERTICAL WATER LEVEL READINGS WERE TAKEN FROM AN AVERAGE TIDE INFORMATION FOR NOAA GAGES ESSEXVILLE (#9075035) AND ALPENA (#9075065)

2012 AERIAL PHOTOGRAPHY DATA SOURCE: NAIP

Sheet Reference Number  
1 of 2



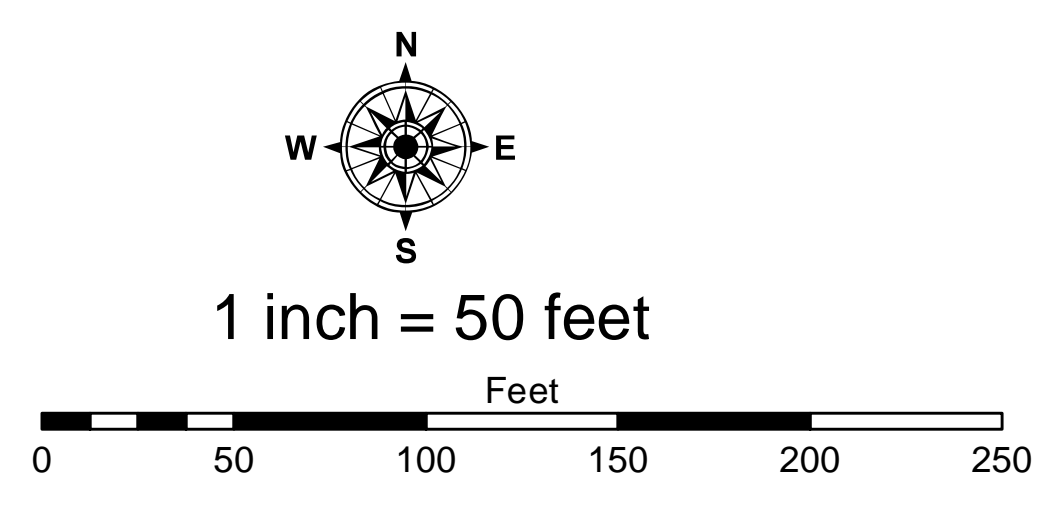


**LEGEND**

- ..... Cable Submarine
- - - Cable Overhead
- ⊥ Beacon, General
- Placement Areas
- Contour Lines
- ▭ Channel Limits

**SOUNDING LEGEND**

- LESS THAN PROJECT DEPTH
- PROJECT DEPTH
- PROJECT DEPTH +1'
- PROJECT DEPTH +2'
- PROJECT DEPTH +3'
- PROJECT DEPTH +4'
- PROJECT DEPTH +5'



- NOTES:**
1. THE SOUNDINGS INDICATED HEREIN ARE GENERALIZED DEPTHS AND ARE NOT REPRESENTATIVE OF THE FULL DATASET.
  2. ELEVATIONS AND SOUNDING DEPTHS ARE REFERRED TO INTERNATIONAL GREAT LAKES DATUM 1985 (IGLD 85). LOW WATER DATUM (LWD) ZERO IS 577.5 FEET ABOVE MEAN WATER LEVEL AT FATHER POINT QUEBEC.
  3. THE INFORMATION DEPICTED ON THIS MAP REPRESENTS THE RESULTS OF SURVEYS MADE ON DATES INDICATED AND CAN ONLY BE CONSIDERED AS INDICATING THE GENERAL CONDITIONS PRESENT AT THE TIME.
  4. HORIZONTAL POSITIONING IS DETERMINED BY APPLAN POS MV4 WVR-RTK OR MARINESTAR G2+.
  5. GRID COORDINATES ARE BASED ON THE MICHIGAN STATE PLANE COORDINATE SYSTEM, LAMBERT PROJECTION, MICHIGAN CENTRAL ZONE (2112), NORTH AMERICAN DATUM (NAD83). ALL COORDINATES SHOWN ARE IN U.S. SURVEY FEET.
  6. UNLESS OTHERWISE NOTED PROJECT DEPTHS ARE 10.0 & 12.0 FEET BELOW LWD
  7. VERTICAL WATER LEVEL READINGS WERE TAKEN FROM AN AVERAGE TIDE INFORMATION FOR NOAA GAGES ESSEXVILLE (#9075035) AND ALPENA (#9075065)
- 2012 AERIAL PHOTOGRAPHY DATA SOURCE: NAIP



**DISCLAIMER:** The data represents the results of data collection and processing for a specific US Army Corps of Engineers activity and indicates the general existing conditions. Engineers assume and indicate the general existing conditions, expressed, or implied concerning the accuracy, completeness, reliability, usability, or suitability for any particular purpose of the data. The user is responsible for the accuracy, completeness, reliability, usability, or suitability of the data for other than its intended purpose. The user is responsible for the accuracy, completeness, reliability, usability, or suitability of the data for other than its intended purpose. These data are provided as a service to the user and are not to be used for any purpose other than that for which they were intended. The user is responsible for the accuracy, completeness, reliability, usability, or suitability of the data for other than its intended purpose. These data are provided as a service to the user and are not to be used for any purpose other than that for which they were intended. The user is responsible for the accuracy, completeness, reliability, usability, or suitability of the data for other than its intended purpose.

U.S. ARMY CORPS OF ENGINEERS DETROIT DISTRICT		
Submitted:	Surveyed By:	
Recommended:	Plotted By:	
Approved:	Chief, Survey Section	Chief, Technical Services

Tawas Bay Harbor, MI  
Tawas Bay Harbor  
TA\_01\_WAS\_20211013\_CS  
13 October 2021

Sheet Reference Number  
2 of 2