

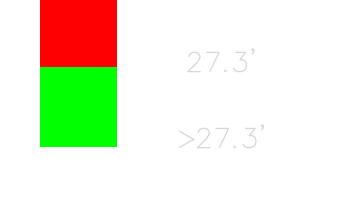
L.W.D. 5745'

PROJECT DEPTH 27.3'

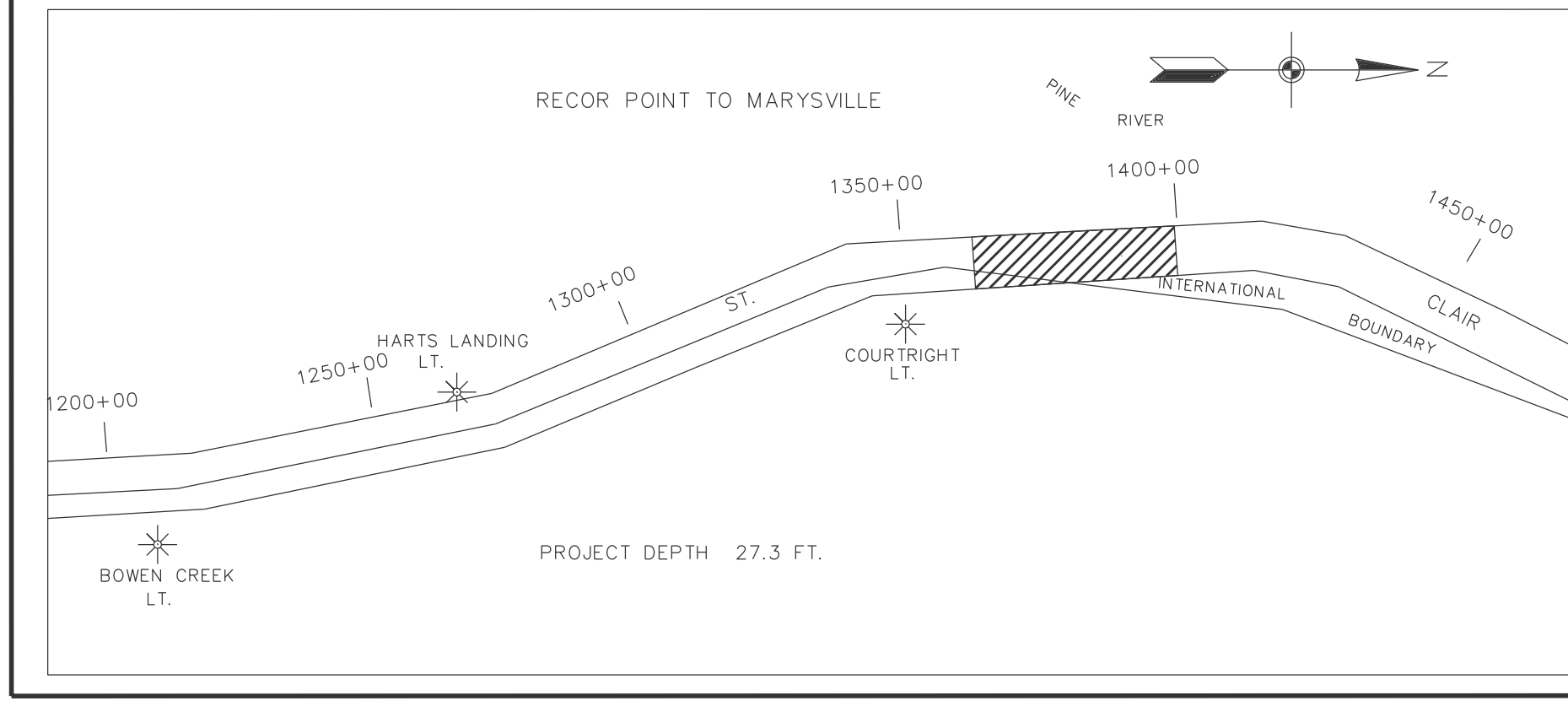
INTERNATIONAL BOUNDARY LINE

U.S.A. CANADA

LEGEND



27.3 FL. PROJECT DEPTH CONTOUR



NOTES:

- 1) THE SOUNDINGS AND ASSOCIATED INFORMATION REPRESENTED HEREIN ARE THE RESULT OF SURVEYS MADE ON THE DATE AS INDICATED AND CAN ONLY BE CONSIDERED REPRESENTATIVE OF THE GENERAL CONDITIONS EXISTING AT THE TIME OF SURVEY.
- 2) THE SOUNDINGS DEPICTED HEREIN ARE EXPRESSED IN U.S. SURVEY FEET AND TENTHS THEREOF AND ARE REFERENCED TO THE FOLLOWING DATUMS:
HORIZONTAL: MICHIGAN STATE PLANE COORDINATE SYSTEM, MICHIGAN SOUTH ZONE #2113, NORTH AMERICAN DATUM (NAD) OF 1983.
VERTICAL: INTERNATIONAL GREAT LAKES DATUM (GLD) OF 1985.
- 3) THE ABOVE SURVEY WAS CONDUCTED USING THE U.S.A.C.E. SURVEY VESSEL WHEELER EMPLOYING THE FOLLOWING COMPONENTS:
POSITIONING: APPLANIX POS-MV4 W/DGPS CORRECTIONS, U.S.C.G. BEACON #838
MOTION COMPENSATION: APPLANIX POS-MV4
SONAR: FISONIC 2024 (MULTIBEAM TRANSDUCER)
SOFTWARE: HYPACK 2013
- 4) TIDE CORRECTION VALUES DERIVED FROM THE NATIONAL OCEANIC AND ATMOSPHERIC ADMINISTRATION (NOAA) WATER LEVEL STATION(S) AS FOLLOWS:
ST CLAIR POLICE, MI (#9014080) @ 98%
DRY DOCK, MI (#9014087) @ 02%
- 5) THE EDITED MULTIBEAM DATA WAS SORTED INTO A 20 FT. MATRIX WHERE THE AVERAGE SOUNDING WAS SELECTED FOR PLOTTING AT THE CELL CENTER.

US ARMY CORPS OF ENGINEERS
DETROIT DISTRICT

DRAWN BY: A.W.P.
CHECKED BY: C.V.L.

UNITED STATES ARMY CORPS OF ENGINEERS
DETROIT AREA OFFICE, DETROIT, MICHIGAN

CONDITION SURVEY
ST. CLAIR RIVER, MICHIGAN
ST. CLAIR RIVER CHANNEL
CS 1363+50 TO CS 1399+00

DATE OF SURVEY: JULY 22, 2012

SCALE 1" = 100'

SHEET 32 OF 54