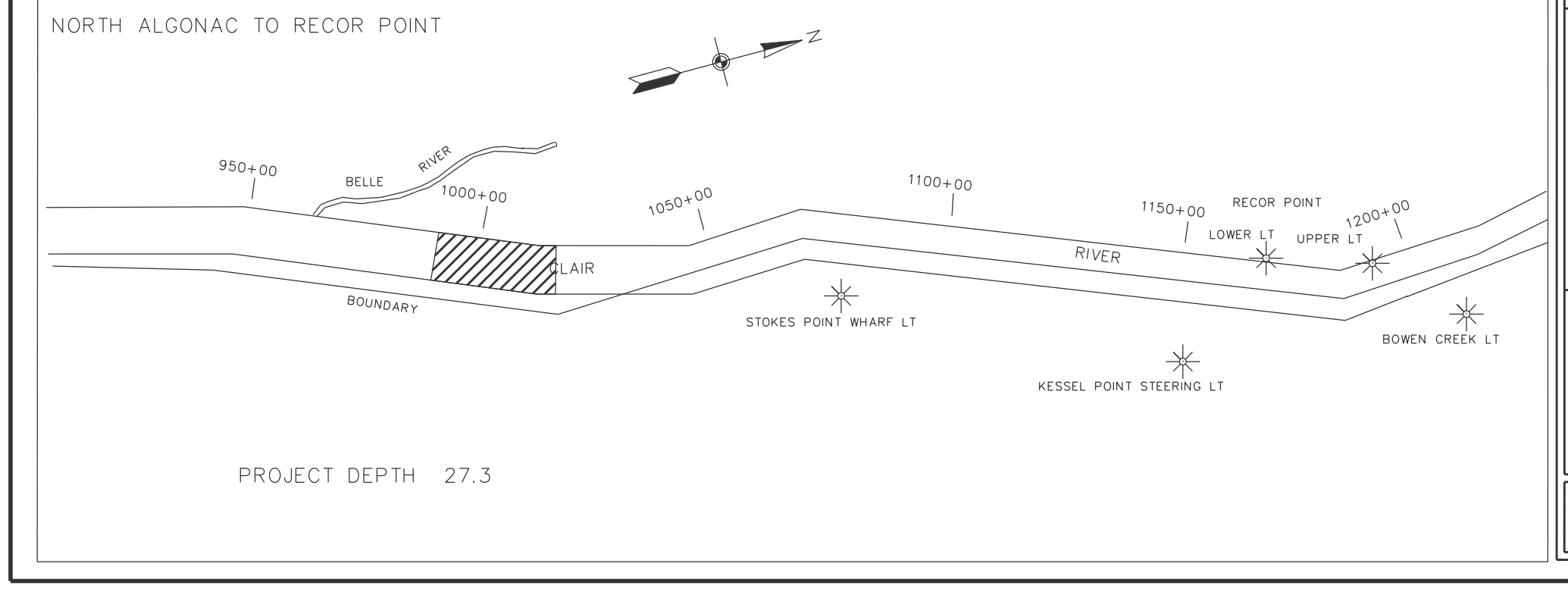


- INTERNATIONAL BOUNDARY LINE
- U.S.A.
CANADA
- LEGEND
- 0'0"
 - 27.3'
 - >27.3'
- 27.3 ft. PROJECT DEPTH CONTOUR
- NOTES:
- THE SOUNDINGS AND ASSOCIATED INFORMATION REPRESENTED HEREIN ARE THE RESULT OF SURVEYS MADE ON THE DATE AS INDICATED AND CAN ONLY BE CONSIDERED REPRESENTATIVE OF THE GENERAL CONDITIONS EXISTING AT THE TIME OF SURVEY.
 - THE SOUNDINGS DEPICTED HEREIN ARE EXPRESSED IN U.S. SURVEY FEET AND TENTHS THEREOF AND ARE REFERENCED TO THE FOLLOWING DATUMS:
HORIZONTAL: MICHIGAN STATE PLANE COORDINATE SYSTEM, MICHIGAN SOUTH ZONE 42113, NORTH AMERICAN DATUM (NAD) OF 1983.
VERTICAL: INTERNATIONAL GREAT LAKES DATUM (IGLD) OF 1985.
 - THE ABOVE SURVEY WAS CONDUCTED USING THE U.S.A.C.E. SURVEY VESSEL WHEELER EMPLOYING THE FOLLOWING COMPONENTS:
POSITIONING: APPLIX POS-MV4 W/DPDS CORRECTIONS, U.S.C.G. BEACON #838
MOTION COMPENSATION: APPLIX POS-MV4
SONAR: FISONIC 2024 (MULTIBeam TRANSDUCER)
SOFTWARE: HYPAACK 2013
 - TIDE CORRECTION VALUES DERIVED FROM THE NATIONAL OCEANIC AND ATMOSPHERIC ADMINISTRATION (NOAA) WATER LEVEL STATION(S) AS FOLLOWS:
ST CLAIR POLICE, MI (#9014080) @ 50%
ALGONAC, MI (#9014070) @ 50%
 - THE EDITED MULTIBEAM DATA WAS SORTED INTO A 20 FT. BY 20 FT. MATRIX WHERE THE AVERAGE SOUNDING WAS SELECTED FOR PLOTTING AT THE CELL CENTER.



UNITED STATES ARMY CORPS OF ENGINEERS
DETROIT AREA OFFICE, DETROIT, MICHIGAN

CONDITION SURVEY
ST. CLAIR RIVER, MICHIGAN
ST. CLAIR RIVER CHANNEL
CS 982+50 TO CS 1017+50

DATE OF SURVEY: JULY 15, 2012

SCALE 1" = 100'

SHEET 21 OF 54