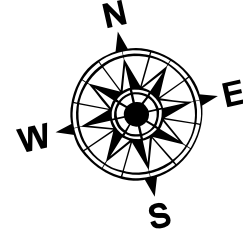
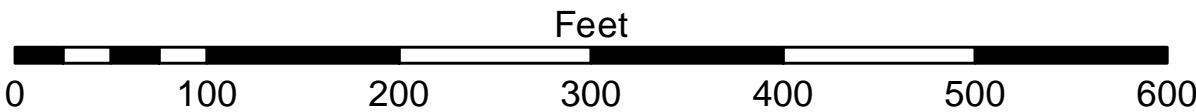


- LEGEND**
- Cable Submarine
 - - Cable Overhead
 - Placement Area
 - Beacon, General
 - Contour Lines
 - Channel Limits

- SOUNDING LEGEND**
- LESS THAN PROJECT DEPTH
 - PROJECT DEPTH
 - PROJECT DEPTH +1'
 - PROJECT DEPTH +2'
 - PROJECT DEPTH +3'
 - PROJECT DEPTH +4'
 - PROJECT DEPTH +5'



1 inch = 100 feet



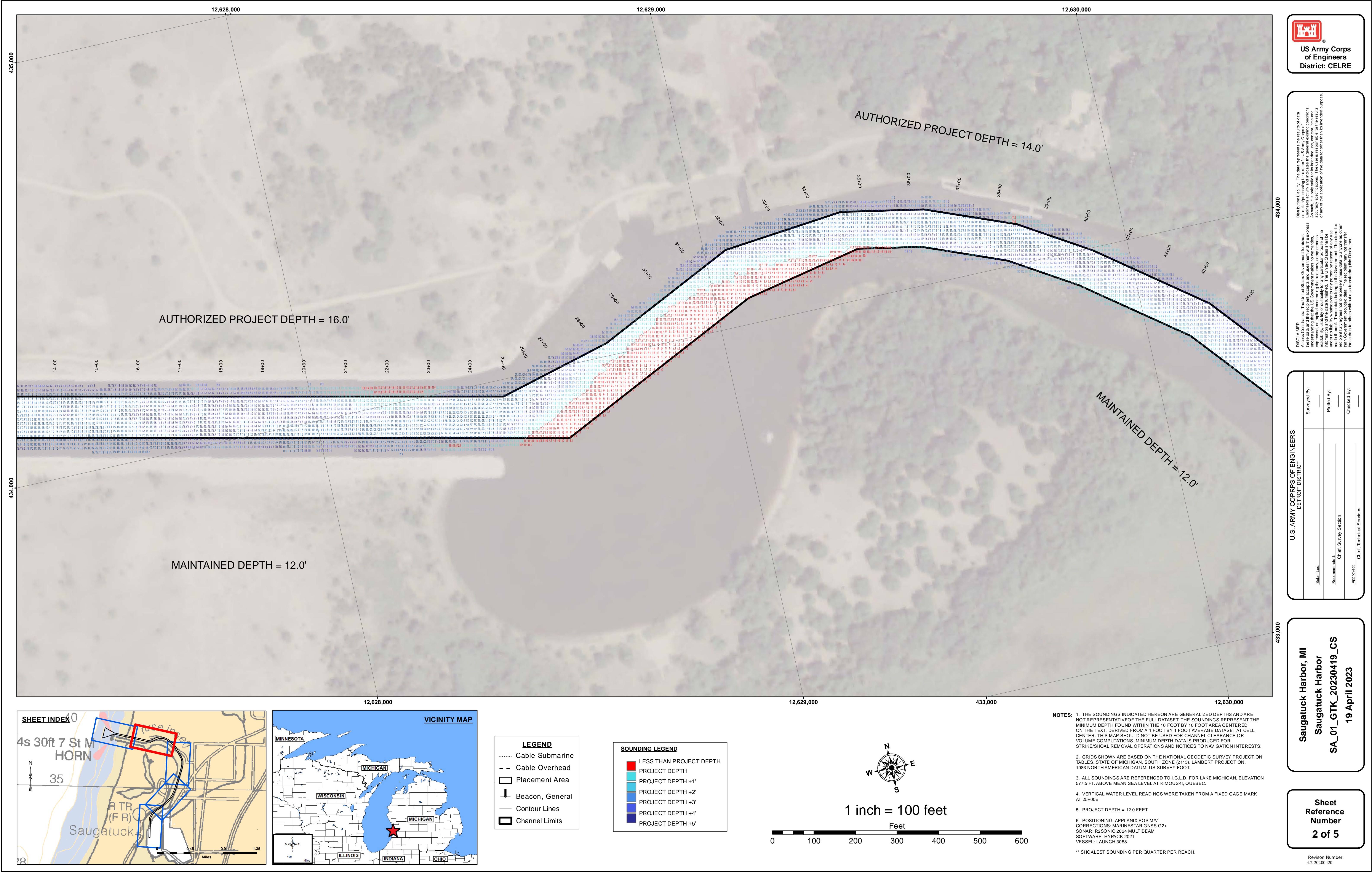
- NOTES:**
1. THE SOUNDINGS INDICATED HEREON ARE GENERALIZED DEPTHS AND ARE NOT REPRESENTATIVE OF THE FULL DATASET. THE SOUNDINGS REPRESENT THE MINIMUM DEPTH FOUND WITHIN THE 10 FOOT BY 10 FOOT AREA CENTERED ON THE TEXT. THIS MAP SHOULD NOT BE USED FOR CHANNEL CLEARANCE OR VOLUME COMPUTATIONS. MINIMUM DEPTH DATA IS PRODUCED FOR STRIKE/SHOAL REMOVAL OPERATIONS AND NOTICES TO NAVIGATION INTERESTS.
 2. GRIDS SHOWN ARE BASED ON THE NATIONAL GEODETIC SURVEY PROJECTION TABLES, STATE OF MICHIGAN, SOUTH ZONE (2113), LAMBERT PROJECTION, 1983 NORTH AMERICAN DATUM, US SURVEY FOOT.
 3. ALL SOUNDINGS ARE REFERENCED TO I.G.L.D. FOR LAKE MICHIGAN, ELEVATION 577.5 FT. ABOVE MEAN SEA LEVEL AT RIMOUSKI, QUEBEC.
 4. VERTICAL WATER LEVEL READINGS WERE TAKEN FROM A FIXED GAGE MARK AT 25+00E
 5. PROJECT DEPTH = 12.0 FEET
 6. POSITIONING: APPLANIX POS M/V
CORRECTIONS: MARINESTAR GNSS G2+
SONAR: R2SONIC 2024 MULTIBEAM
SOFTWARE: HYPACK 2021
VESSEL: LAUNCH 3058
- *** SHALLOWEST SOUNDING PER QUARTER PER REACH.



The data is publicly available. The data represents the results of data collection and processing for a specific project. The U.S. Army Corps of Engineers actively and regularly updates the general existing conditions of the project. The data is not intended for use in any other manner than the intended purpose of the project. The data is not intended for use in any other manner than the intended purpose of the project. The data is not intended for use in any other manner than the intended purpose of the project.

U.S. ARMY CORPS OF ENGINEERS DETROIT DISTRICT	
Submitted:	Surveyed By:
Recommended:	Plotted By:
Approved:	Checked By:

Saugatuck Harbor, MI
Saugatuck Harbor
SA_01_GTK_20230419_CS
19 April 2023



The data on this map was collected by the U.S. Army Corps of Engineers and is provided for informational purposes only. The data is not intended for navigation or other purposes. The user is responsible for the results of any application of the data for other than its intended purpose.

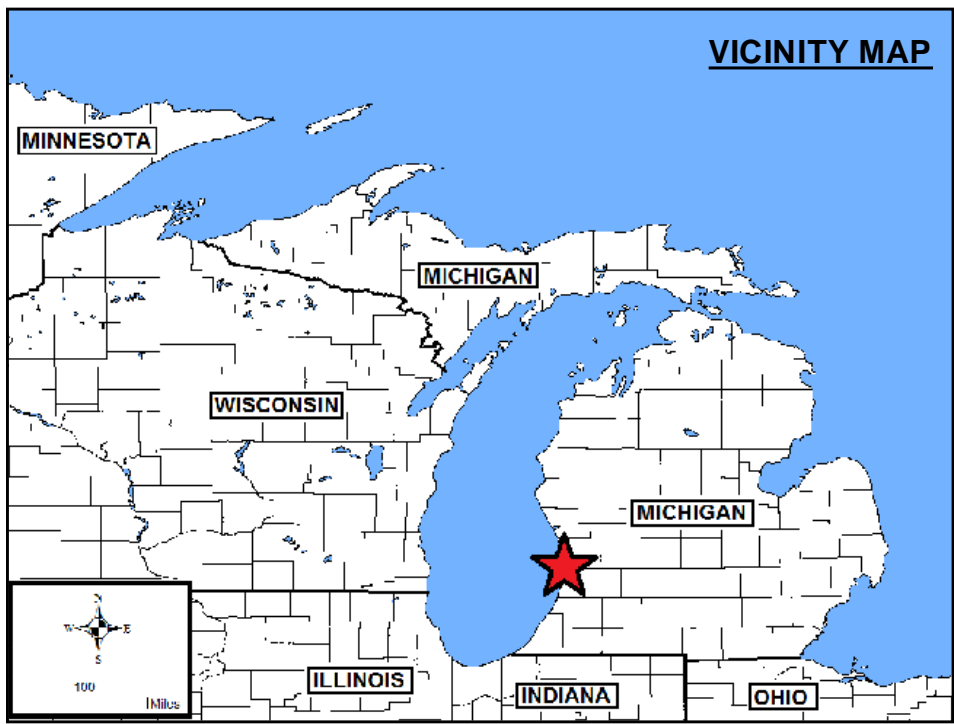
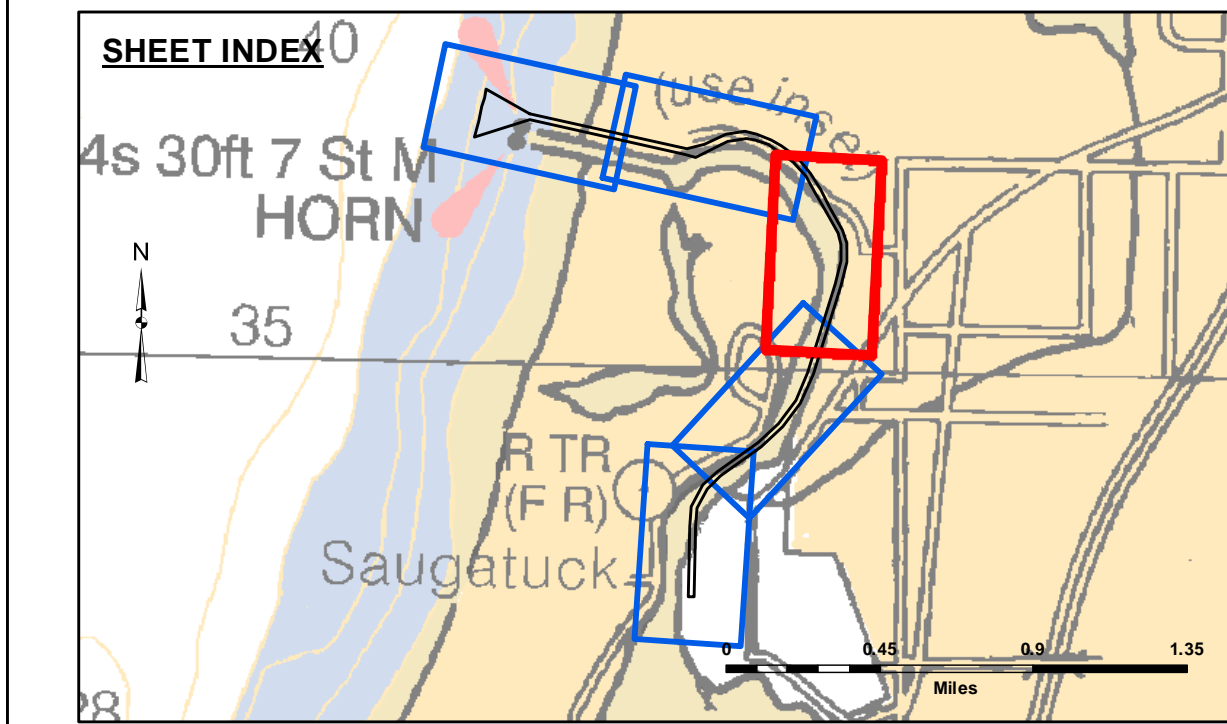
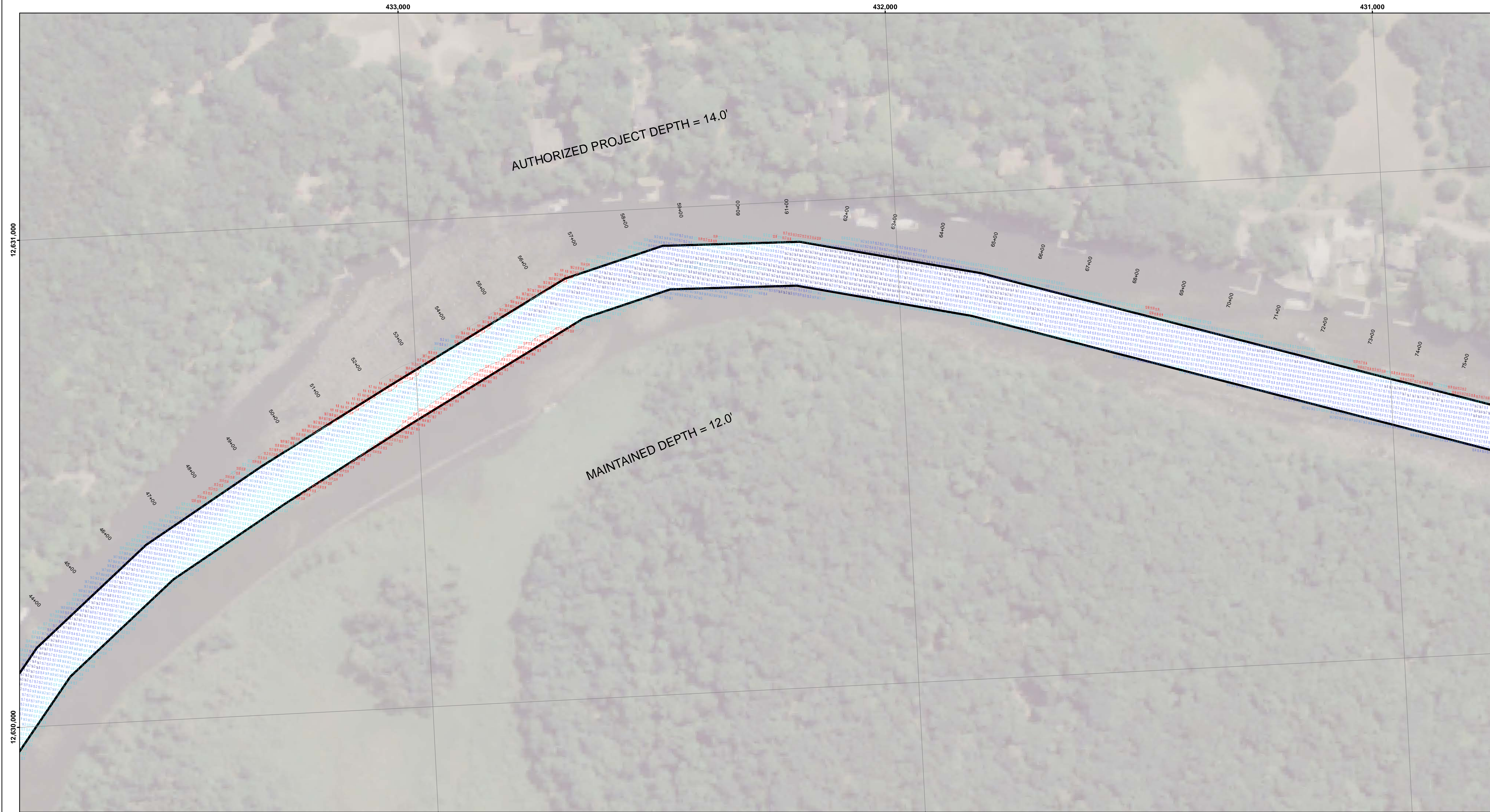
DISCLAIMER: The U.S. Army Corps of Engineers and its personnel are not responsible for the accuracy, completeness, or reliability of the data or for any use of the data. The user is responsible for the results of any application of the data for other than its intended purpose.

Submitted:	Surveyed By:
Recommended:	Printed By:
Approved:	Checked By:

U.S. ARMY CORPS OF ENGINEERS
DETROIT DISTRICT

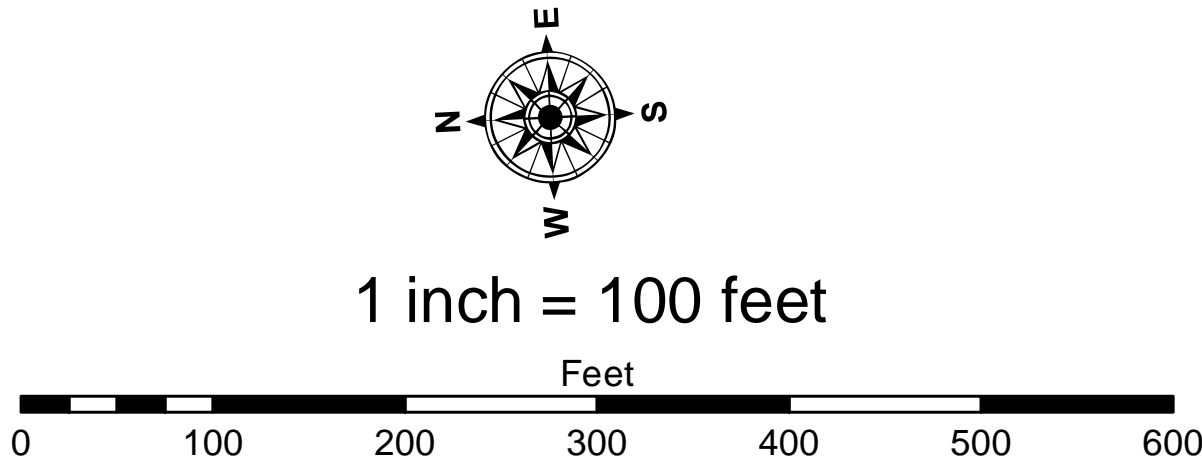
Saugatuck Harbor, MI
Saugatuck Harbor
SA_01_GTK_20230419_CS
19 April 2023

Sheet
Reference
Number
2 of 5



- LEGEND**
- Cable Submarine
 - - Cable Overhead
 - Placement Area
 - ⊥ Beacon, General
 - Contour Lines
 - ▭ Channel Limits

- SOUNDING LEGEND**
- PROJECT DEPTH
 - PROJECT DEPTH +1'
 - PROJECT DEPTH +2'
 - PROJECT DEPTH +3'
 - PROJECT DEPTH +4'
 - PROJECT DEPTH +5'



- NOTES:**
1. THE SOUNDINGS INDICATED HEREON ARE GENERALIZED DEPTHS AND ARE NOT REPRESENTATIVE OF THE FULL DATASET. THE SOUNDINGS REPRESENT THE MINIMUM DEPTH FOUND WITHIN THE 10 FOOT BY 10 FOOT AREA CENTERED ON THE TEXT. THIS MAP SHOULD NOT BE USED FOR CHANNEL CLEARANCE OR VOLUME COMPUTATIONS. MINIMUM DEPTH DATA IS PROVIDED FOR STRIKE/SHOAL REMOVAL OPERATIONS AND NOTICES TO NAVIGATION INTERESTS.
 2. GRIDS SHOWN ARE BASED ON THE NATIONAL GEODETIC SURVEY PROJECTION TABLES, STATE OF MICHIGAN, SOUTH ZONE (2113), LAMBERT PROJECTION, 1983 NORTH AMERICAN DATUM, US SURVEY FOOT.
 3. ALL SOUNDINGS ARE REFERENCED TO I.G.L.D. FOR LAKE MICHIGAN, ELEVATION 577.5 FT. ABOVE MEAN SEA LEVEL AT RIMOULSI, QUEBEC.
 4. VERTICAL WATER LEVEL READINGS WERE TAKEN FROM A FIXED GAGE MARK AT 25+00E
 5. PROJECT DEPTH = 12.0 FEET
 6. POSITIONING: APPLANIX POS M/V
CORRECTIONS: MARINESTAR GNSS G2+
SONAR: R2SONIC 2024 MULTIBEAM
SOFTWARE: HYPACK 2021
VESSEL: LAUNCH 3058
- *** SHOALEST SOUNDING PER QUARTER PER REACH.

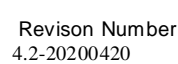


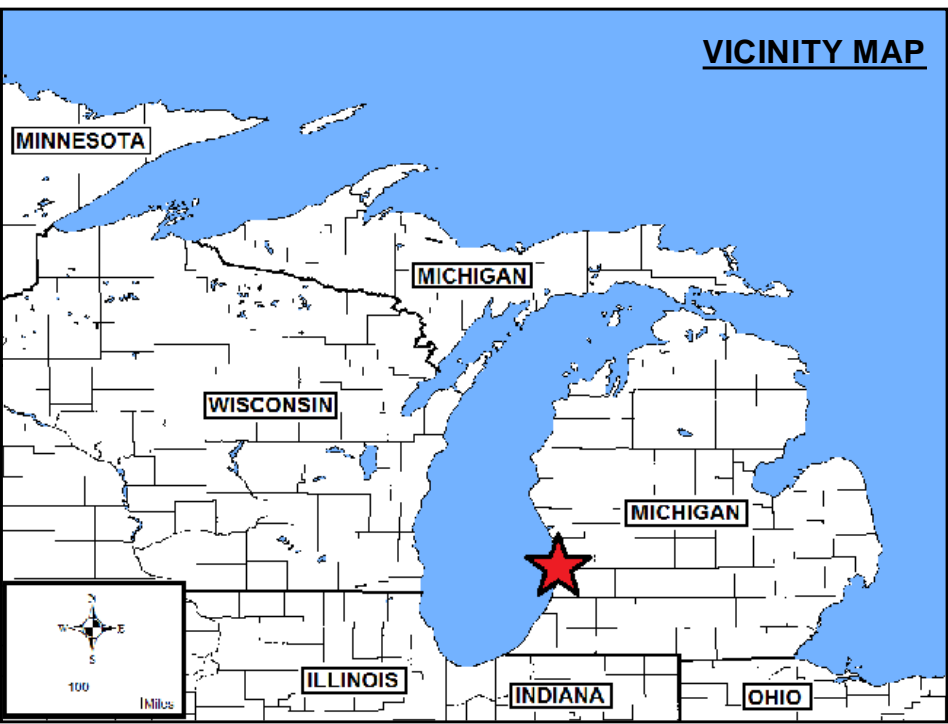
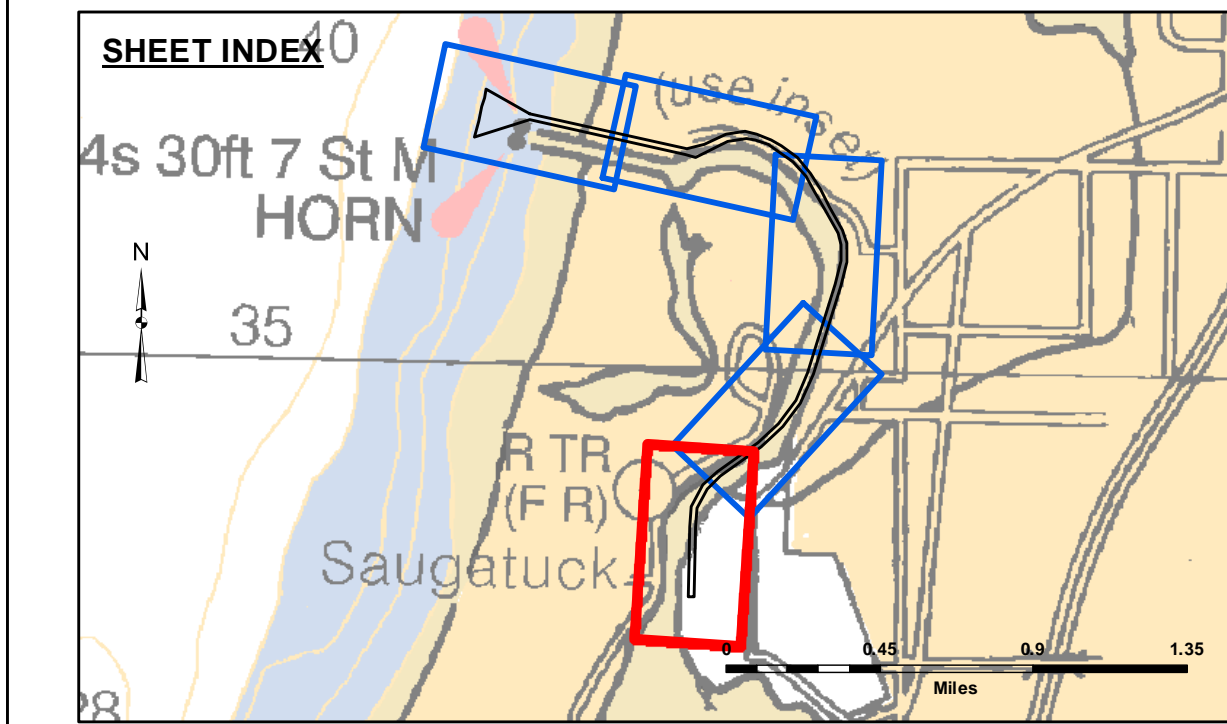
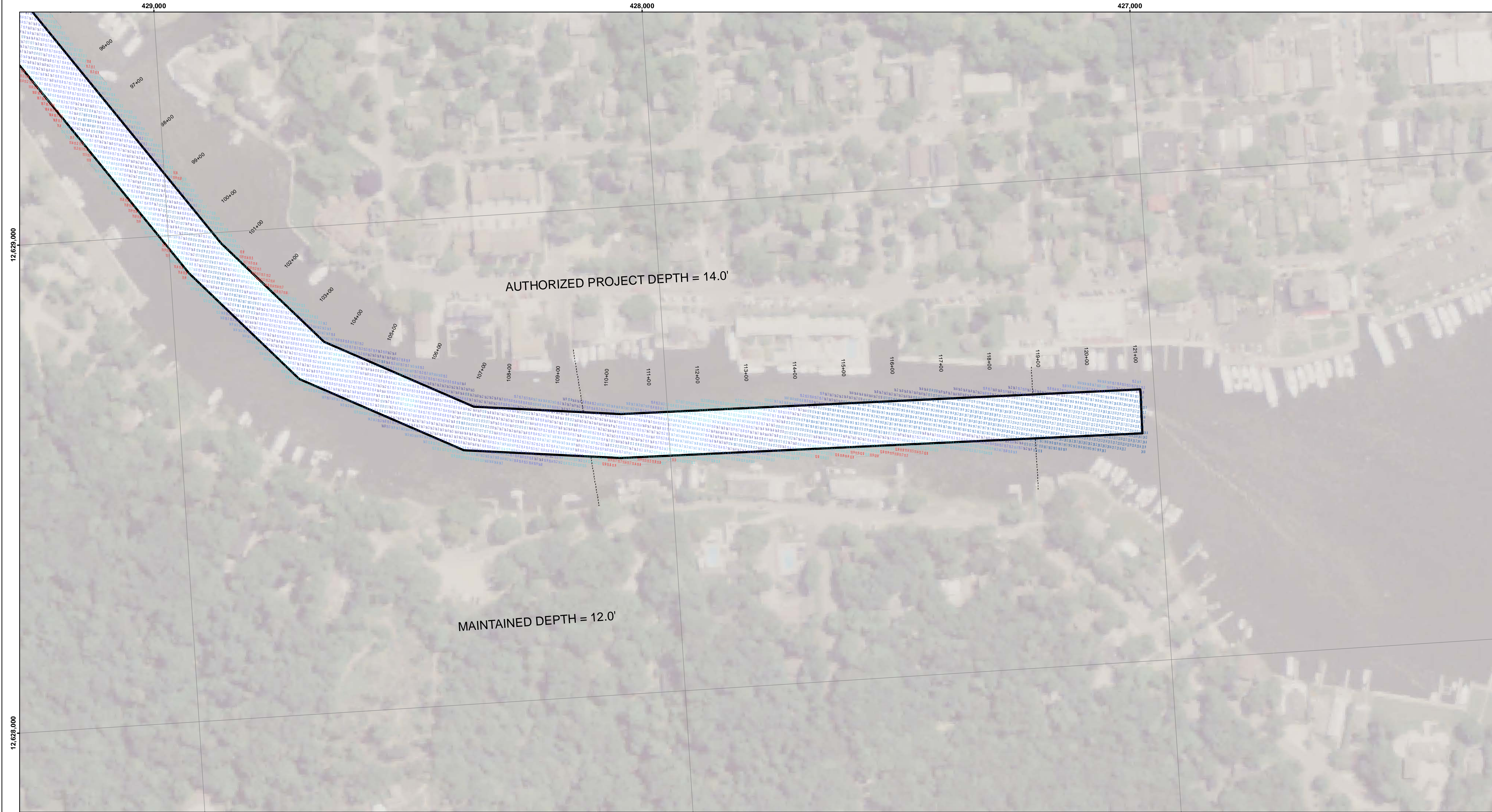
The data is the property of the U.S. Army Corps of Engineers. The data is provided for the use of the Engineers and is not to be used for any other purpose. The data is provided for the use of the Engineers and is not to be used for any other purpose. The data is provided for the use of the Engineers and is not to be used for any other purpose.

U.S. ARMY CORPS OF ENGINEERS DETROIT DISTRICT		
Submitted:	Surveyed By:	
Recommended:	Plotted By:	
Approved:	Chief, Survey Section	
	Chief, Technical Services	

Saugatuck Harbor, MI
Saugatuck Harbor
SA_01_GTK_20230419_CS
19 April 2023

Sheet
Reference
Number
3 of 5



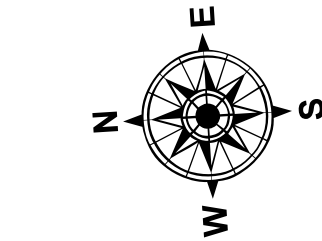


LEGEND

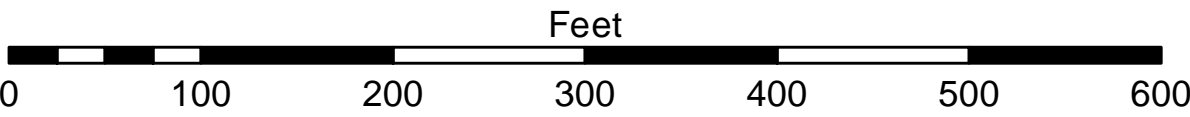
.....	Cable Submarine
- - -	Cable Overhead
□	Placement Area
⊥	Beacon, General
—	Contour Lines
□	Channel Limits

SOUNDING LEGEND

Red	LESS THAN PROJECT DEPTH
Light Blue	PROJECT DEPTH
Medium Blue	PROJECT DEPTH +1'
Dark Blue	PROJECT DEPTH +2'
Very Dark Blue	PROJECT DEPTH +3'
Black	PROJECT DEPTH +4'
Dark Grey	PROJECT DEPTH +5'



1 inch = 100 feet



- NOTES:
1. THE SOUNDINGS INDICATED HEREON ARE GENERALIZED DEPTHS AND ARE NOT REPRESENTATIVE OF THE FULL DATASET. THE SOUNDINGS REPRESENT THE MINIMUM DEPTH FOUND WITHIN THE 10 FOOT BY 10 FOOT AVERAGE DATASET AT CELL CENTER. THIS MAP SHOULD NOT BE USED FOR CHANNEL CLEARANCE OR VOLUME COMPUTATIONS. MINIMUM DEPTH DATA IS PRODUCED FOR STRIKE/SHOAL REMOVAL OPERATIONS AND NOTICES TO NAVIGATION INTERESTS.
 2. GRIDS SHOWN ARE BASED ON THE NATIONAL GEODETIC SURVEY PROJECTION TABLES, STATE OF MICHIGAN, SOUTH ZONE (2113), LAMBERT PROJECTION, 1983 NORTH AMERICAN DATUM, US SURVEY FOOT.
 3. ALL SOUNDINGS ARE REFERENCED TO I.G.L.D. FOR LAKE MICHIGAN, ELEVATION 577.5 FT. ABOVE MEAN SEA LEVEL AT RIMOUSKI, QUEBEC.
 4. VERTICAL WATER LEVEL READINGS WERE TAKEN FROM A FIXED GAGE MARK AT 25+00E
 5. PROJECT DEPTH = 12.0 FEET
 6. POSITIONING: APPLANIX POS M/V
CORRECTIONS: MARINESTAR GNSS G2+
SONAR: R2SONIC 2024 MULTIBEAM
SOFTWARE: HYPACK 2021
VESSEL: LAUNCH 3058

*** SHOALEST SOUNDING PER QUARTER PER REACH.



DISCLAIMER: The data represents the results of data collection activities for a specific project. The data is not intended for use in any other project or for any other purpose. The data is not intended for use in any other project or for any other purpose. The data is not intended for use in any other project or for any other purpose.

U.S. ARMY CORPS OF ENGINEERS DETROIT DISTRICT		
Submitted:	Surveyed By:	
Recommended:	Plotted By:	
Approved:	Chief, Survey Section	
	Chief, Technical Services	

Saugatuck Harbor, MI
Saugatuck Harbor
SA_01_GTK_20230419_CS
19 April 2023

Sheet
Reference
Number
5 of 5