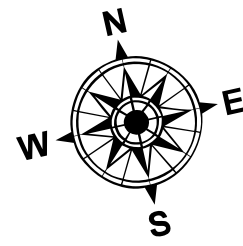
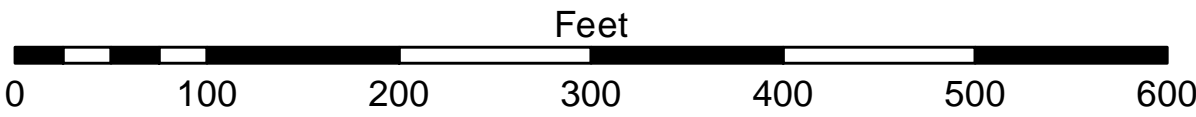


- LEGEND**
- ..... Cable Submarine
  - Cable Overhead
  - Placement Area
  - ┆ Beacon, General
  - Contour Lines
  - ▭ Channel Limits

- SOUNDING LEGEND**
- LESS THAN PROJECT DEPTH
  - PROJECT DEPTH
  - PROJECT DEPTH +1'
  - PROJECT DEPTH +2'
  - PROJECT DEPTH +3'
  - PROJECT DEPTH +4'
  - PROJECT DEPTH +5'



1 inch = 100 feet



- NOTES:**
1. THE SOUNDINGS INDICATED HEREON ARE GENERALIZED DEPTHS AND ARE NOT REPRESENTATIVE OF THE FULL DATASET. THE SOUNDINGS REPRESENT THE MINIMUM DEPTH FOUND WITHIN THE 10 FOOT BY 10 FOOT AREA CENTERED ON THE TEXT. THIS MAP SHOULD NOT BE USED FOR CHANNEL CLEARANCE OR VOLUME COMPUTATIONS. MINIMUM DEPTH DATA IS PROVIDED FOR STRIKE/SOAL REMOVAL OPERATIONS AND NOTICES TO NAVIGATION INTERESTS.
  2. GRIDS SHOWN ARE BASED ON THE NATIONAL GEODETIC SURVEY PROJECTION TABLES, STATE OF MICHIGAN, SOUTH ZONE (2113), LAMBERT PROJECTION, 1983 NORTH AMERICAN DATUM, US SURVEY FOOT.
  3. ALL SOUNDINGS ARE REFERENCED TO I.G.L. FOR LAKE MICHIGAN, ELEVATION 577.5 FT. ABOVE MEAN SEA LEVEL AT RIMOUSKI, QUEBEC.
  4. HYDRAULIC CORRECTOR OF 0.3 FEET APPLIED.
  5. VERTICAL WATER LEVEL READINGS WERE TAKEN FROM A FIXED GAGE MARK AT 25+00E
  6. PROJECT DEPTH = 12.0 FEET
  7. POSITIONING: APPLANIX POS M/V  
CORRECTIONS: MARINESTAR GNSS G2  
SONAR: R2SONIC 2024 MULTIBEAM  
SOFTWARE: HYPACK 2018  
VESSEL: LAUNCH 3058



DISCLAIMER: The data represents the results of data collection and is not a guarantee of accuracy. The Corps of Engineers activity and releases the general existing conditions. The user is responsible for the results and accuracy of the data for other than its intended purpose. The user is responsible for the results and accuracy of the data for other than its intended purpose.

DISCLAIMER: The United States Government furnishes these data and the recipient accepts and uses them with the express understanding that the data are not a guarantee of accuracy, completeness, or implied concerning the accuracy, completeness, readability, usability or suitability for any particular purpose of the user. These data belong to the Government. The recipient may not transfer these data to others without also transferring this Disclaimer.

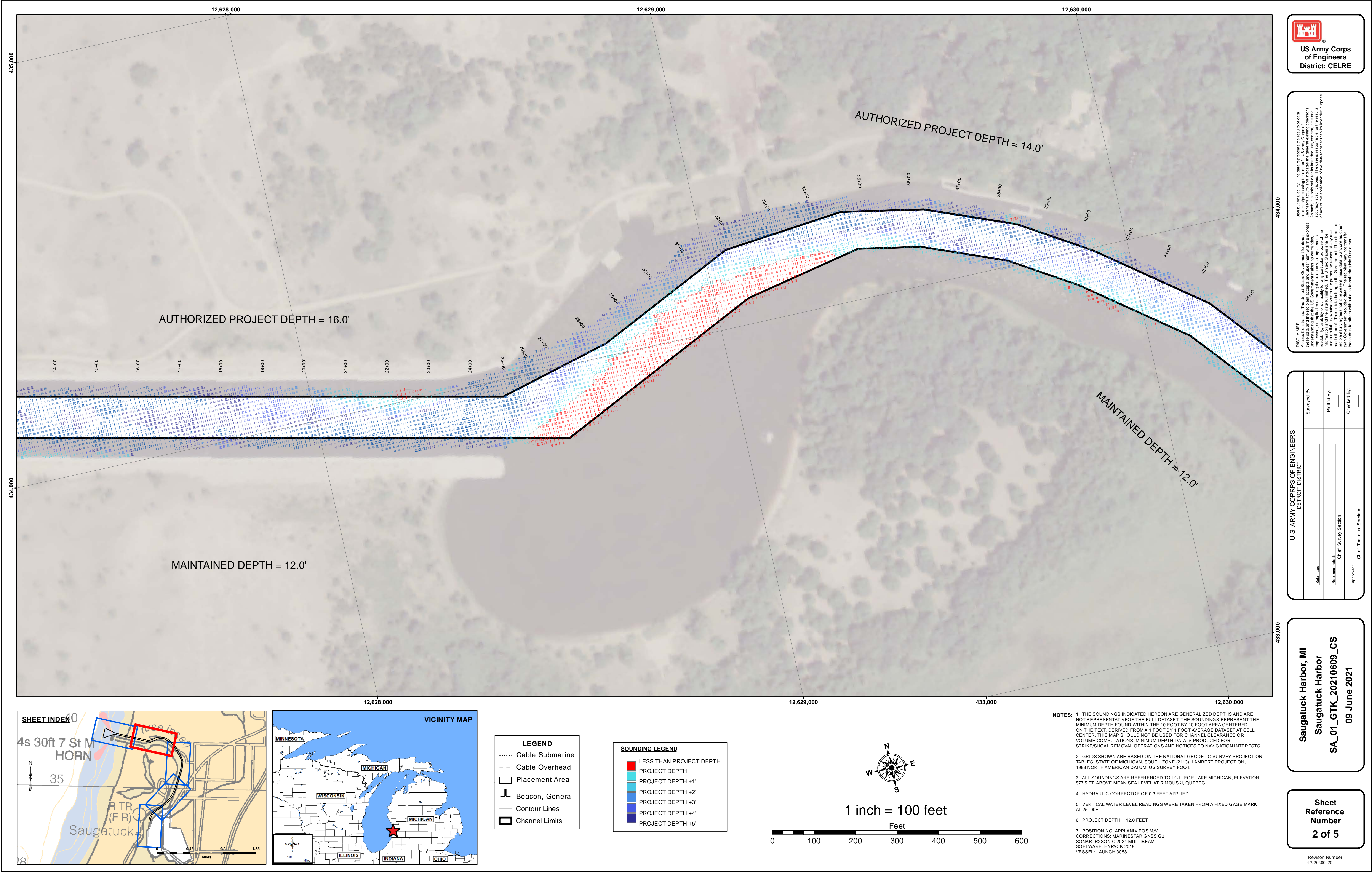
U.S. ARMY CORPS OF ENGINEERS DETROIT DISTRICT			
Submitted:	Surveyed By:	Plotted By:	Checked By:
Recommended:	Chief, Survey Section		
Approved:	Chief, Technical Services		

Saugatuck Harbor, MI  
Saugatuck Harbor  
SA\_01\_GTK\_20210609\_CS  
09 June 2021

Sheet  
Reference  
Number  
1 of 5

Revision Number:  
4.2-20210609-20





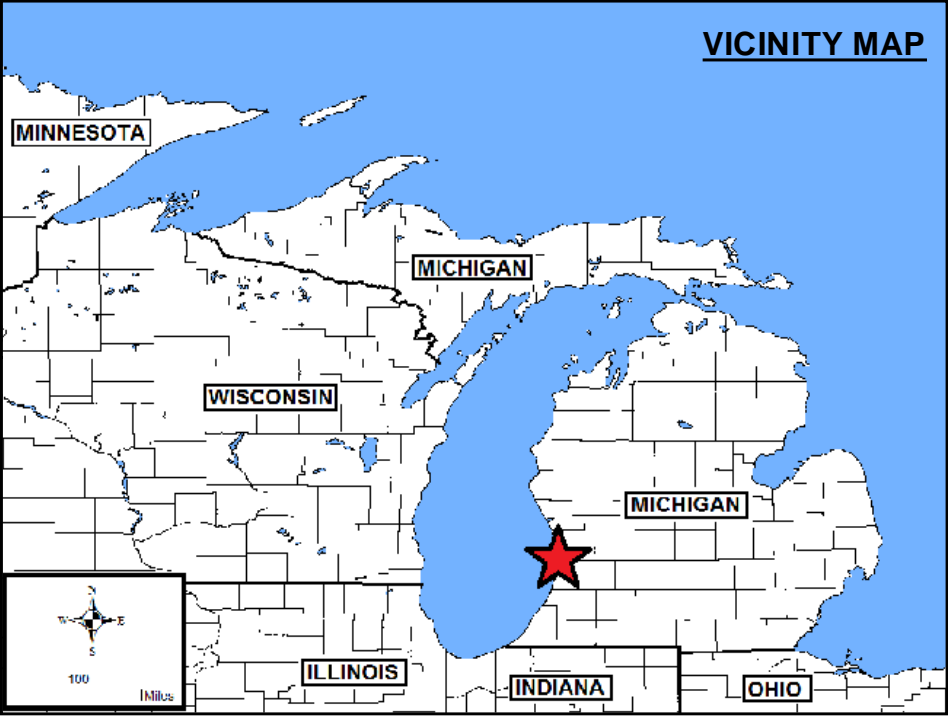
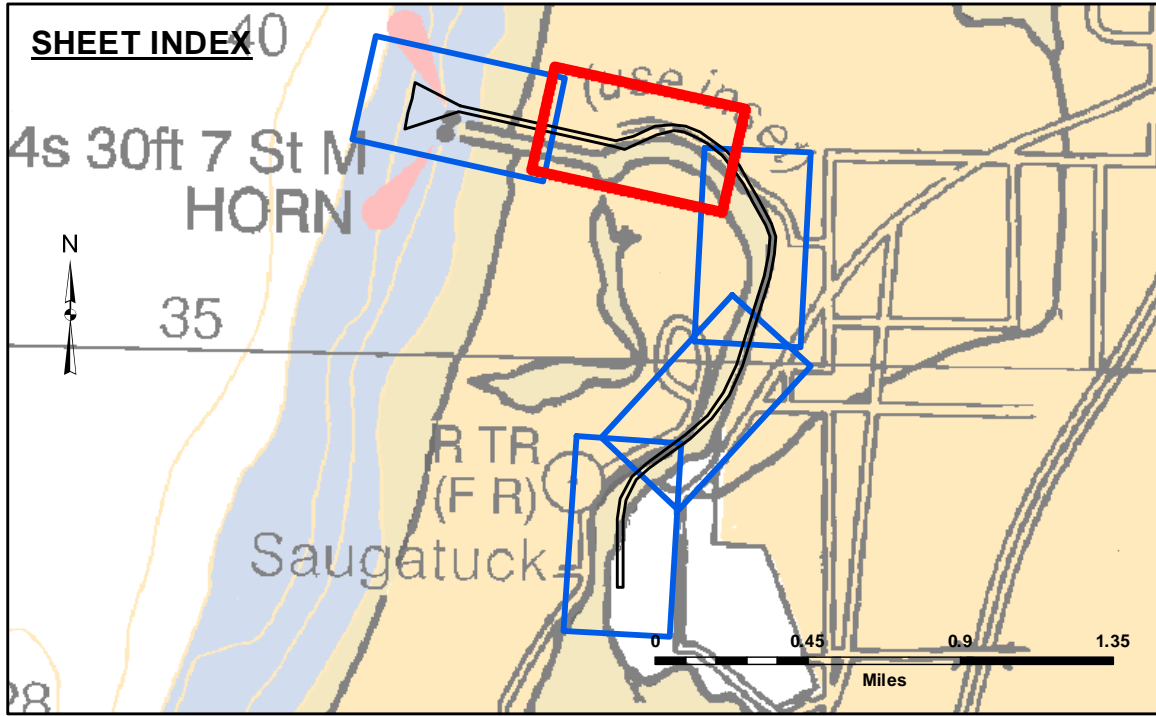
The data is liability. The data represents the results of data collection and processing for a specific purpose. The U.S. Army Corps of Engineers actively and indicates the general existing conditions. The data is not intended for use in any other manner than the intended purpose. The user is responsible for the results of any of the application of the data for other than its intended purpose.

Access Constraints: The United States Government furnishes these data and the recipient accepts and uses them with the express understanding that the data are not to be used for any purpose other than that for which they were collected, expressed, or implied concerning the accuracy, completeness, readability, usability or suitability for any particular purpose of the data. The data are not to be used for any purpose other than that for which they were collected, expressed, or implied concerning the accuracy, completeness, readability, usability or suitability for any particular purpose of the data. The data are not to be used for any purpose other than that for which they were collected, expressed, or implied concerning the accuracy, completeness, readability, usability or suitability for any particular purpose of the data. The data are not to be used for any purpose other than that for which they were collected, expressed, or implied concerning the accuracy, completeness, readability, usability or suitability for any particular purpose of the data.

U.S. ARMY CORPS OF ENGINEERS DETROIT DISTRICT	Submitted:	Surveyed By:
	Recommended:	Plotted By:
	Approved:	Checked By:

Saugatuck Harbor, MI  
Saugatuck Harbor  
SA\_01\_GTK\_20210609\_CS  
09 June 2021

Sheet  
Reference  
Number  
2 of 5



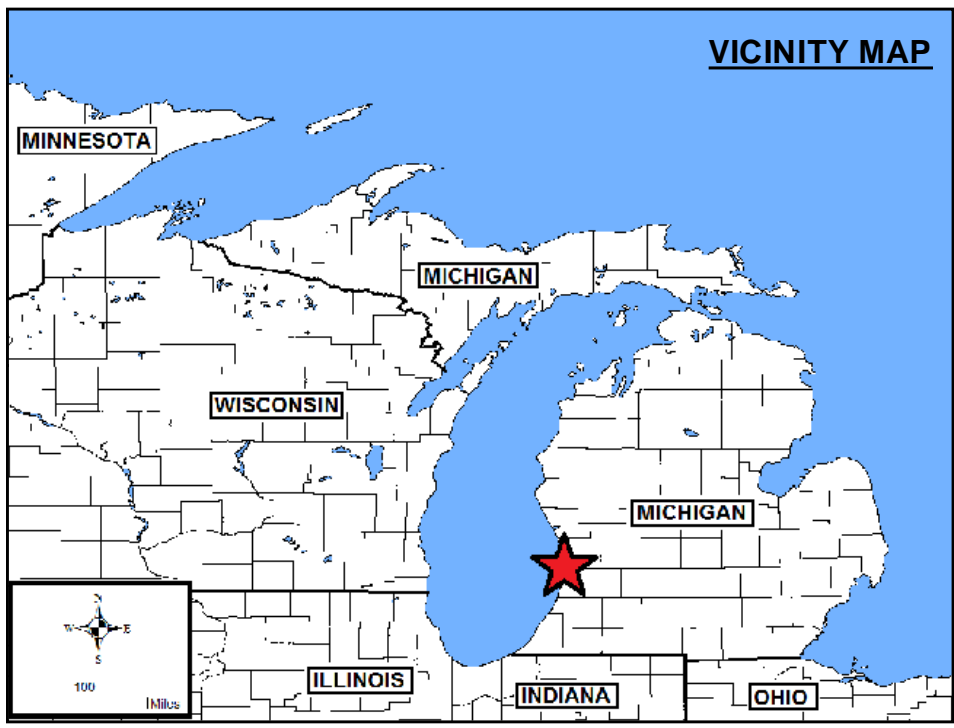
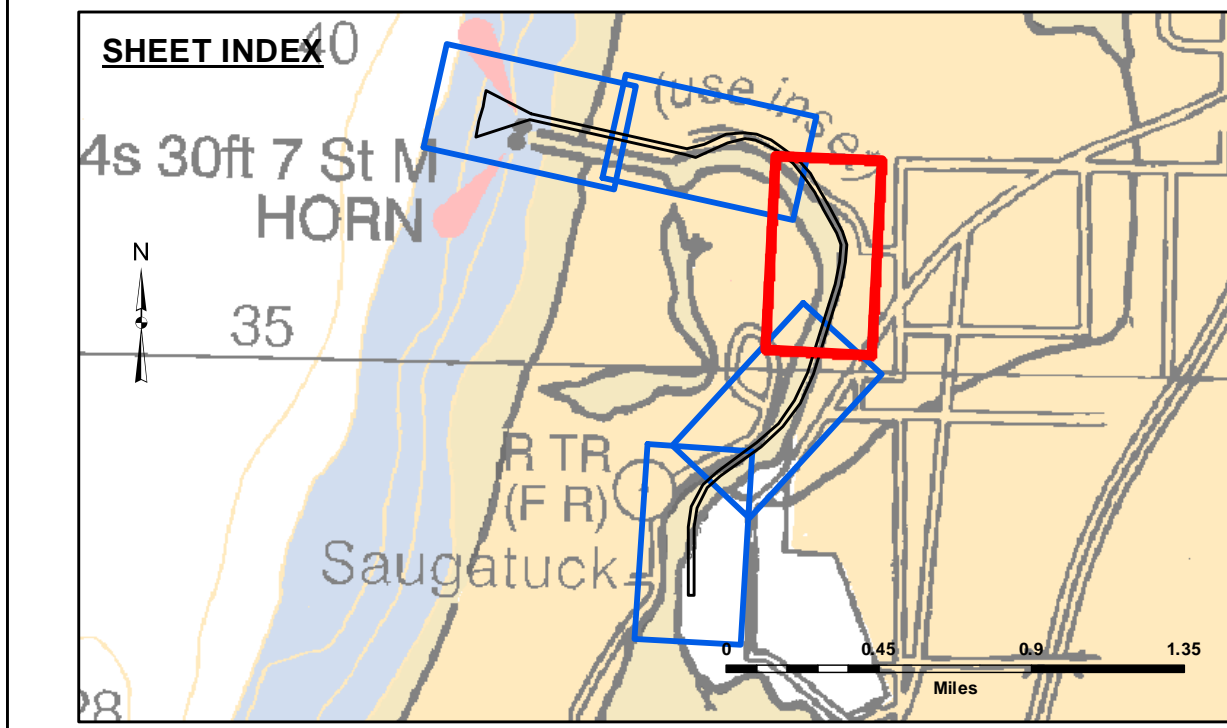
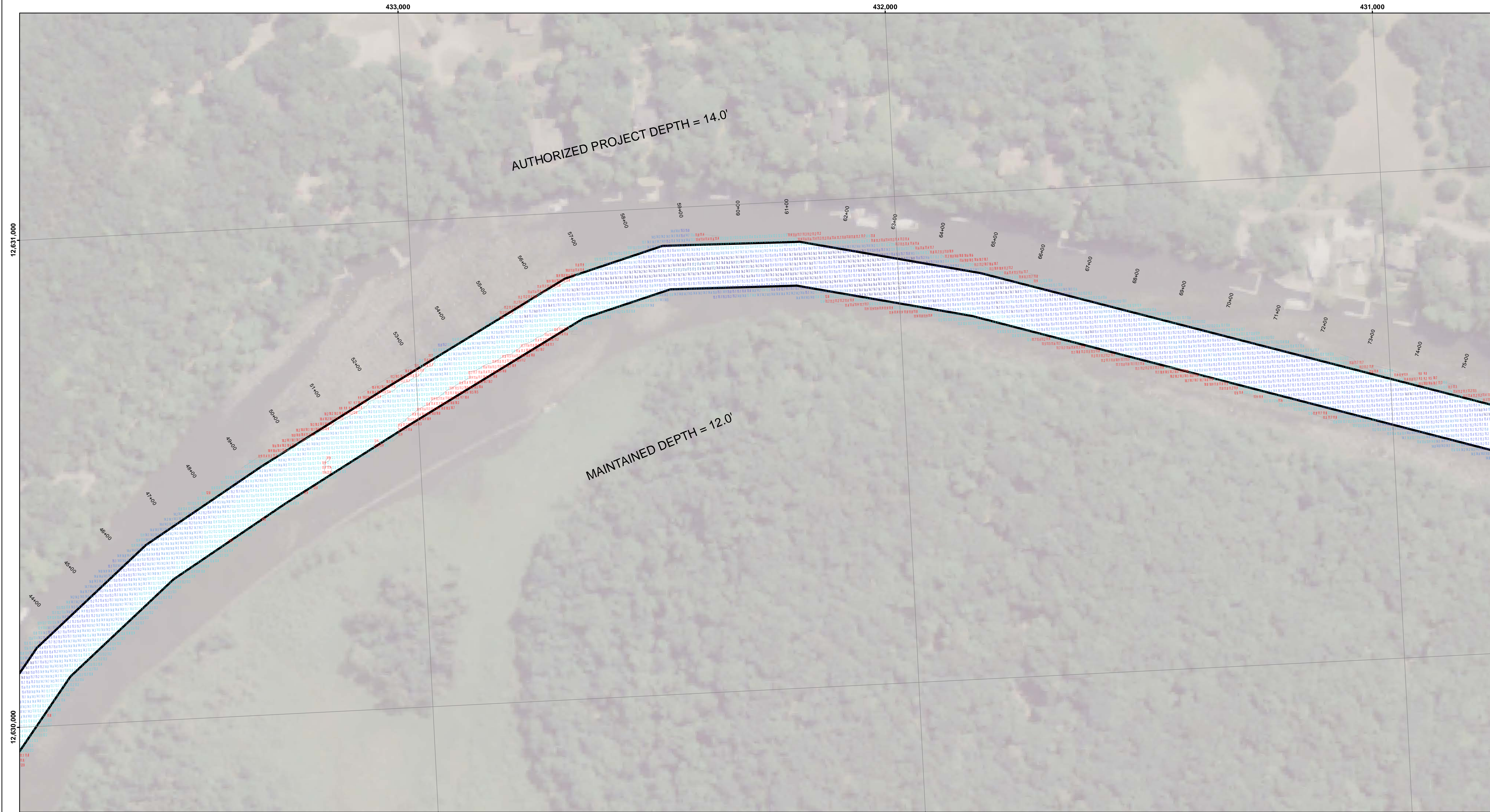
- LEGEND**
- ..... Cable Submarine
  - Cable Overhead
  - Placement Area
  - Beacon, General
  - Contour Lines
  - Channel Limits

- SOUNDING LEGEND**
- LESS THAN PROJECT DEPTH
  - PROJECT DEPTH
  - PROJECT DEPTH +1'
  - PROJECT DEPTH +2'
  - PROJECT DEPTH +3'
  - PROJECT DEPTH +4'
  - PROJECT DEPTH +5'

**NOTES:**

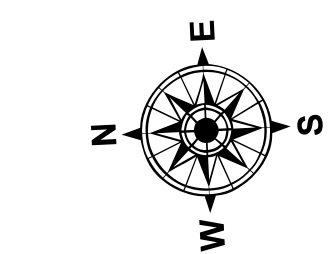
1. THE SOUNDINGS INDICATED HEREON ARE GENERALIZED DEPTHS AND ARE NOT REPRESENTATIVE OF THE FULL DATASET. THE SOUNDINGS REPRESENT THE MINIMUM DEPTH FOUND WITHIN THE 10 FOOT BY 10 FOOT AREA CENTERED ON THE TEXT, DERIVED FROM A 1 FOOT BY 1 FOOT AVERAGE DATASET AT CELL CENTER. THIS MAP SHOULD NOT BE USED FOR CHANNEL CLEARANCE OR VOLUME COMPUTATIONS. MINIMUM DEPTH DATA IS PROVIDED FOR STRIKE/SOAL REMOVAL OPERATIONS AND NOTICES TO NAVIGATION INTERESTS.
2. GRIDS SHOWN ARE BASED ON THE NATIONAL GEODETIC SURVEY PROJECTION TABLES, STATE OF MICHIGAN, SOUTH ZONE (2113), LAMBERT PROJECTION, 1983 NORTH AMERICAN DATUM, US SURVEY FOOT.
3. ALL SOUNDINGS ARE REFERENCED TO I.G.L. FOR LAKE MICHIGAN, ELEVATION 577.5 FT. ABOVE MEAN SEA LEVEL AT RIMOUSKI, QUEBEC.
4. HYDRAULIC CORRECTOR OF 0.3 FEET APPLIED.
5. VERTICAL WATER LEVEL READINGS WERE TAKEN FROM A FIXED GAGE MARK AT 25+00E
6. PROJECT DEPTH = 12.0 FEET
7. POSITIONING: APPLANIX POS M/V  
CORRECTIONS: MARINESTAR GNSS G2  
SONAR: R2SONIC 2024 MULTIBEAM  
SOFTWARE: HYPACK 2018  
VESSEL: LAUNCH 3058



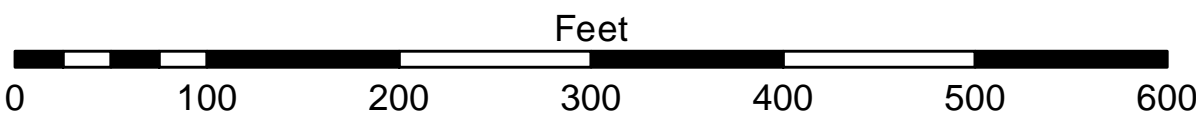


- LEGEND**
- ..... Cable Submarine
  - Cable Overhead
  - Placement Area
  - ⊥ Beacon, General
  - Contour Lines
  - ▭ Channel Limits

- SOUNDING LEGEND**
- LESS THAN PROJECT DEPTH
  - PROJECT DEPTH
  - PROJECT DEPTH +1'
  - PROJECT DEPTH +2'
  - PROJECT DEPTH +3'
  - PROJECT DEPTH +4'
  - PROJECT DEPTH +5'



1 inch = 100 feet



- NOTES:**
1. THE SOUNDINGS INDICATED HEREON ARE GENERALIZED DEPTHS AND ARE NOT REPRESENTATIVE OF THE FULL DATASET. THE SOUNDINGS REPRESENT THE MINIMUM DEPTH FOUND WITHIN THE 10 FOOT BY 10 FOOT AREA CENTERED ON THE TEXT. THIS MAP SHOULD NOT BE USED FOR CHANNEL CLEARANCE OR VOLUME COMPUTATIONS. MINIMUM DEPTH DATA IS PROVIDED FOR STRIKE/SOAL REMOVAL OPERATIONS AND NOTICES TO NAVIGATION INTERESTS.
  2. GRIDS SHOWN ARE BASED ON THE NATIONAL GEODETIC SURVEY PROJECTION TABLES, STATE OF MICHIGAN, SOUTH ZONE (2113), LAMBERT PROJECTION, 1983 NORTH AMERICAN DATUM, US SURVEY FOOT.
  3. ALL SOUNDINGS ARE REFERENCED TO I.G.L. FOR LAKE MICHIGAN, ELEVATION 577.5 FT. ABOVE MEAN SEA LEVEL AT RIMOULSI, QUEBEC.
  4. HYDRAULIC CORRECTOR OF 0.3 FEET APPLIED.
  5. VERTICAL WATER LEVEL READINGS WERE TAKEN FROM A FIXED GAGE MARK AT 25+00E
  6. PROJECT DEPTH = 12.0 FEET
  7. POSITIONING: APPLANIX POS M/V  
CORRECTIONS: MARINESTAR GNSS G2  
SONAR: R2SONIC 2024 MULTIBEAM  
SOFTWARE: HYPACK 2018  
VESSEL: LAUNCH 3058



The data on this map was derived from the results of data collection conducted by the US Army Corps of Engineers. The data is provided for informational purposes only. The data is not intended for use in any other manner. The data is not intended for use in any other manner. The data is not intended for use in any other manner.

**U.S. ARMY CORPS OF ENGINEERS**  
**DETROIT DISTRICT**

Submitted: \_\_\_\_\_ Surveyed By: \_\_\_\_\_

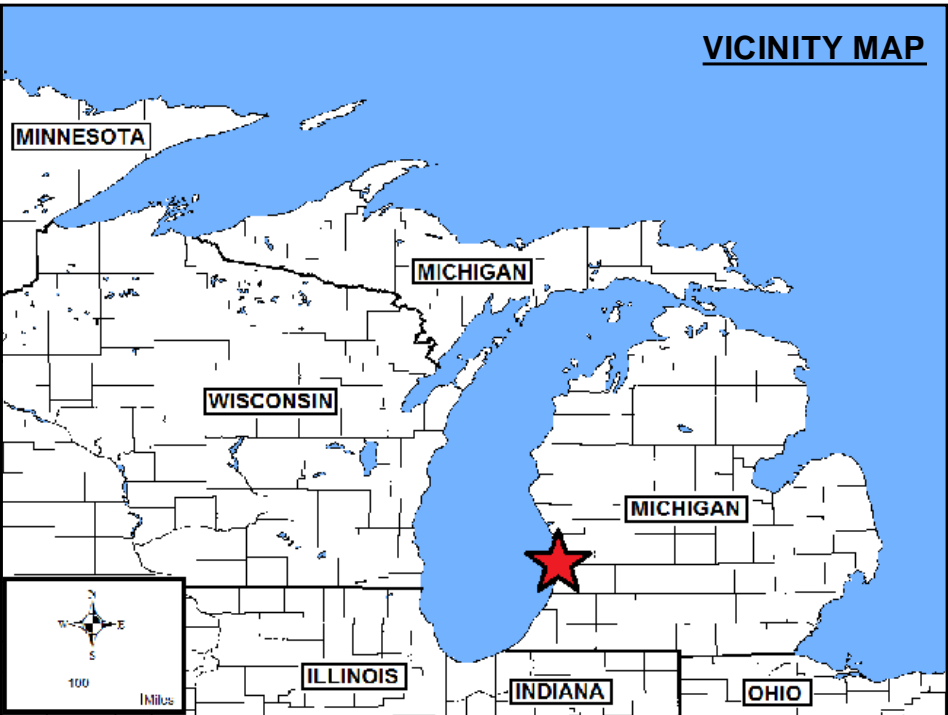
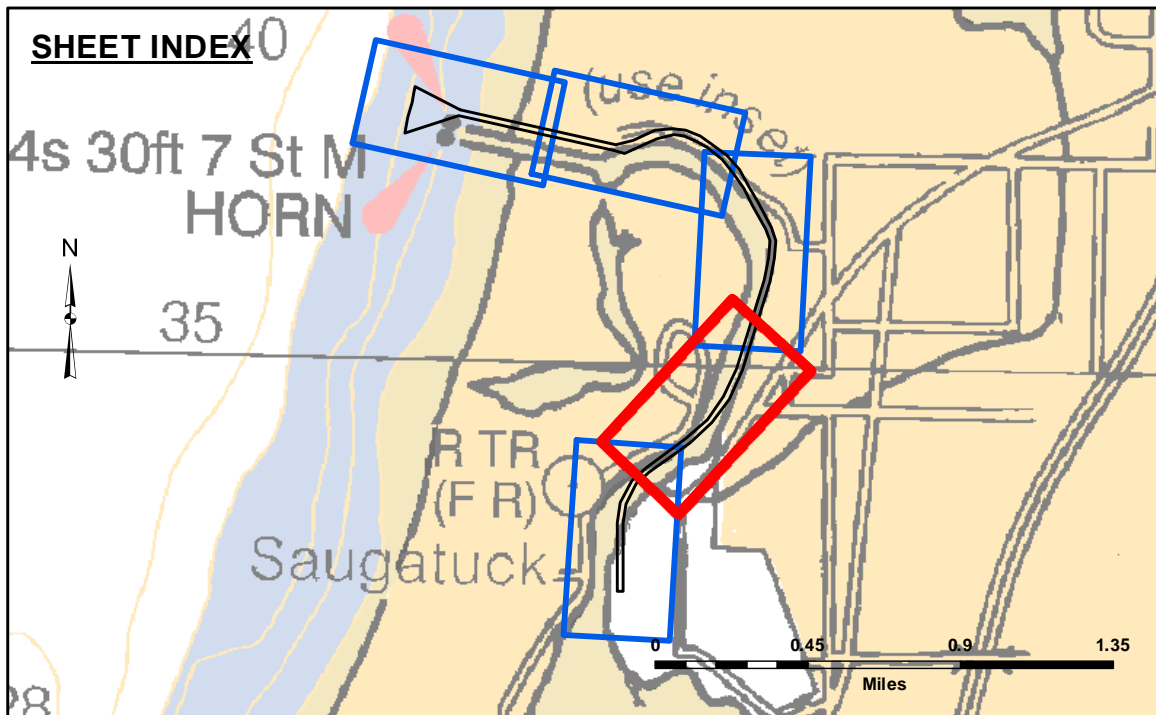
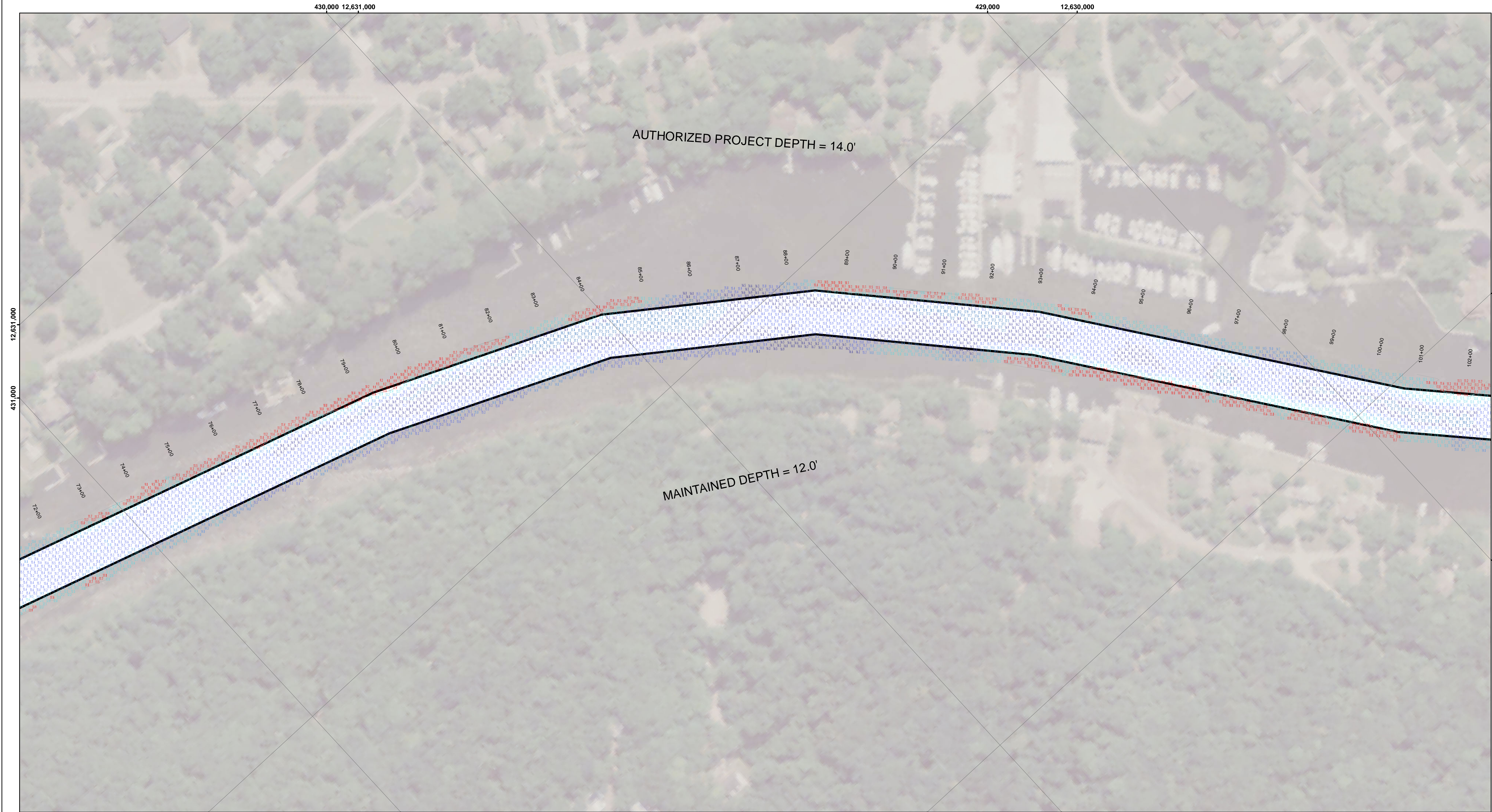
Recommended: \_\_\_\_\_ Chief, Survey Section \_\_\_\_\_ Plotted By: \_\_\_\_\_

Approved: \_\_\_\_\_ Chief, Technical Services \_\_\_\_\_ Checked By: \_\_\_\_\_

**Saugatuck Harbor, MI**  
**Saugatuck Harbor**  
**SA\_01\_GTK\_20210609\_CS**  
**09 June 2021**

**Sheet Reference Number**  
**3 of 5**





**LEGEND**

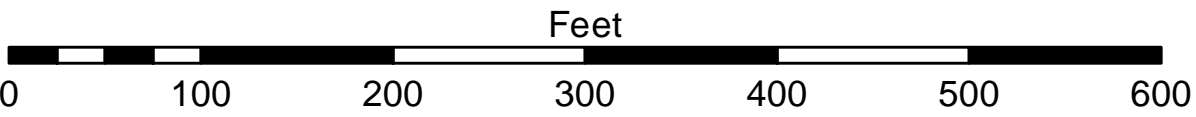
.....	Cable Submarine
--	Cable Overhead
□	Placement Area
⊥	Beacon, General
—	Contour Lines
□	Channel Limits

**SOUNDING LEGEND**

■	LESS THAN PROJECT DEPTH
■	PROJECT DEPTH
■	PROJECT DEPTH +1'
■	PROJECT DEPTH +2'
■	PROJECT DEPTH +3'
■	PROJECT DEPTH +4'
■	PROJECT DEPTH +5'



1 inch = 100 feet



- NOTES:**
1. THE SOUNDINGS INDICATED HEREON ARE GENERALIZED DEPTHS AND ARE NOT REPRESENTATIVE OF THE FULL DATASET. THE SOUNDINGS REPRESENT THE MINIMUM DEPTH FOUND WITHIN THE 10 FOOT BY 10 FOOT AREA CENTERED ON THE TEXT. THIS MAP SHOULD NOT BE USED FOR CHANNEL CLEARANCE OR VOLUME COMPUTATIONS. MINIMUM DEPTH DATA IS PRODUCED FOR STRIKE/SOAL REMOVAL OPERATIONS AND NOTICES TO NAVIGATION INTERESTS.
  2. GRIDS SHOWN ARE BASED ON THE NATIONAL GEODETIC SURVEY PROJECTION TABLES, STATE OF MICHIGAN, SOUTH ZONE (2113), LAMBERT PROJECTION, 1983 NORTH AMERICAN DATUM, US SURVEY FOOT.
  3. ALL SOUNDINGS ARE REFERENCED TO I.G.L. FOR LAKE MICHIGAN, ELEVATION 577.5 FT. ABOVE MEAN SEA LEVEL AT RIMOUSKI, QUEBEC.
  4. HYDRAULIC CORRECTOR OF 0.3 FEET APPLIED.
  5. VERTICAL WATER LEVEL READINGS WERE TAKEN FROM A FIXED GAGE MARK AT 25+00E
  6. PROJECT DEPTH = 12.0 FEET
  7. POSITIONING: APPLANIX POS M/V  
CORRECTIONS: MARINESTAR GNSS G2  
SONAR: R2SONIC 2024 MULTIBEAM  
SOFTWARE: HYPACK 2018  
VESSEL: LAUNCH 3058



The data is liability. The data represents the results of data collection and is not a guarantee of accuracy. The data is not to be used for any purpose other than the intended purpose. The user is responsible for the results of any application of the data for other than its intended purpose.

Access Constraints: The United States Government furnishes these data and the recipient accepts and uses them with the express understanding that the data are not to be used for any purpose other than the intended purpose. The data are not to be used for any purpose other than the intended purpose. The data are not to be used for any purpose other than the intended purpose.

U.S. ARMY CORPS OF ENGINEERS DETROIT DISTRICT		
Submitted:	Surveyed By:	
Recommended:	Plotted By:	
Approved:	Checked By:	

**Saugatuck Harbor, MI**  
**Saugatuck Harbor**  
**SA\_01\_GTK\_20210609\_CS**  
**09 June 2021**

**Sheet Reference Number**  
**4 of 5**



