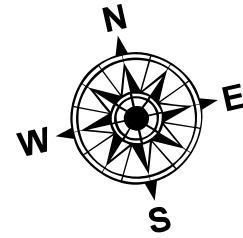
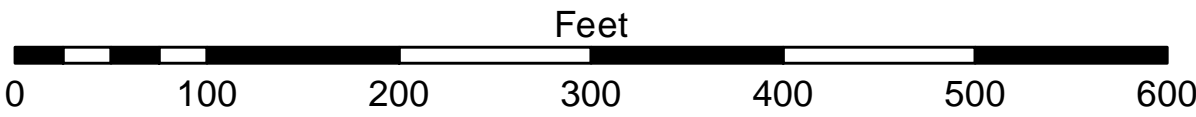


- LEGEND**
- Cable Submarine
 - Cable Overhead
 - Placement Area
 - ┆ Beacon, General
 - Contour Lines
 - ▭ Channel Limits

- SOUNDING LEGEND**
- LESS THAN PROJECT DEPTH
 - PROJECT DEPTH
 - PROJECT DEPTH +1'
 - PROJECT DEPTH +2'
 - PROJECT DEPTH +3'
 - PROJECT DEPTH +4'
 - PROJECT DEPTH +5'



1 inch = 100 feet



- NOTES:**
1. THE SOUNDINGS INDICATED HEREON ARE GENERALIZED DEPTHS AND ARE NOT REPRESENTATIVE OF THE FULL DATASET. THE SOUNDINGS REPRESENT THE MINIMUM DEPTH FOUND WITHIN THE 10 FOOT BY 10 FOOT AREA CENTERED ON THE TEXT. DERIVED FROM A 1 FOOT BY 1 FOOT AVERAGE DATASET AT CELL CENTER. THIS MAP SHOULD NOT BE USED FOR CHANNEL CLEARANCE OR VOLUME COMPUTATIONS. MINIMUM DEPTH DATA IS PRODUCED FOR STRIKE/SOAL REMOVAL OPERATIONS AND NOTICES TO NAVIGATION INTERESTS.
 2. GRIDS SHOWN ARE BASED ON THE NATIONAL GEODETIC SURVEY PROJECTION TABLES, STATE OF MICHIGAN, SOUTH ZONE (2113), LAMBERT PROJECTION, 1983 NORTH AMERICAN DATUM, US SURVEY FOOT.
 3. ALL SOUNDINGS ARE REFERENCED TO I.G.L. FOR LAKE MICHIGAN, ELEVATION 577.5 FT. ABOVE MEAN SEA LEVEL AT RIMOUSKI, QUEBEC.
 4. HYDRAULIC CORRECTOR OF 0.3 FEET APPLIED.
 5. VERTICAL WATER LEVEL READINGS WERE TAKEN FROM A FIXED GAGE MARK AT 25+00E
 6. PROJECT DEPTH = 12.0 FEET
 7. POSITIONING: APPLANIX POS M/V
CORRECTIONS: OMNISTAR GNSS G2
SONAR: R2SONIC 2024 MULTIBEAM
SOFTWARE: HYPACK 2018
VESSEL: LAUNCH 3058
 8. THE INFORMATION DEPICTED ON THIS MAP REPRESENTS THE RESULTS OF SURVEYS MADE ON THE DATES INDICATED AND CAN ONLY BE CONSIDERED AS INDICATING THE GENERAL CONDITIONS EXISTING AT THAT TIME.

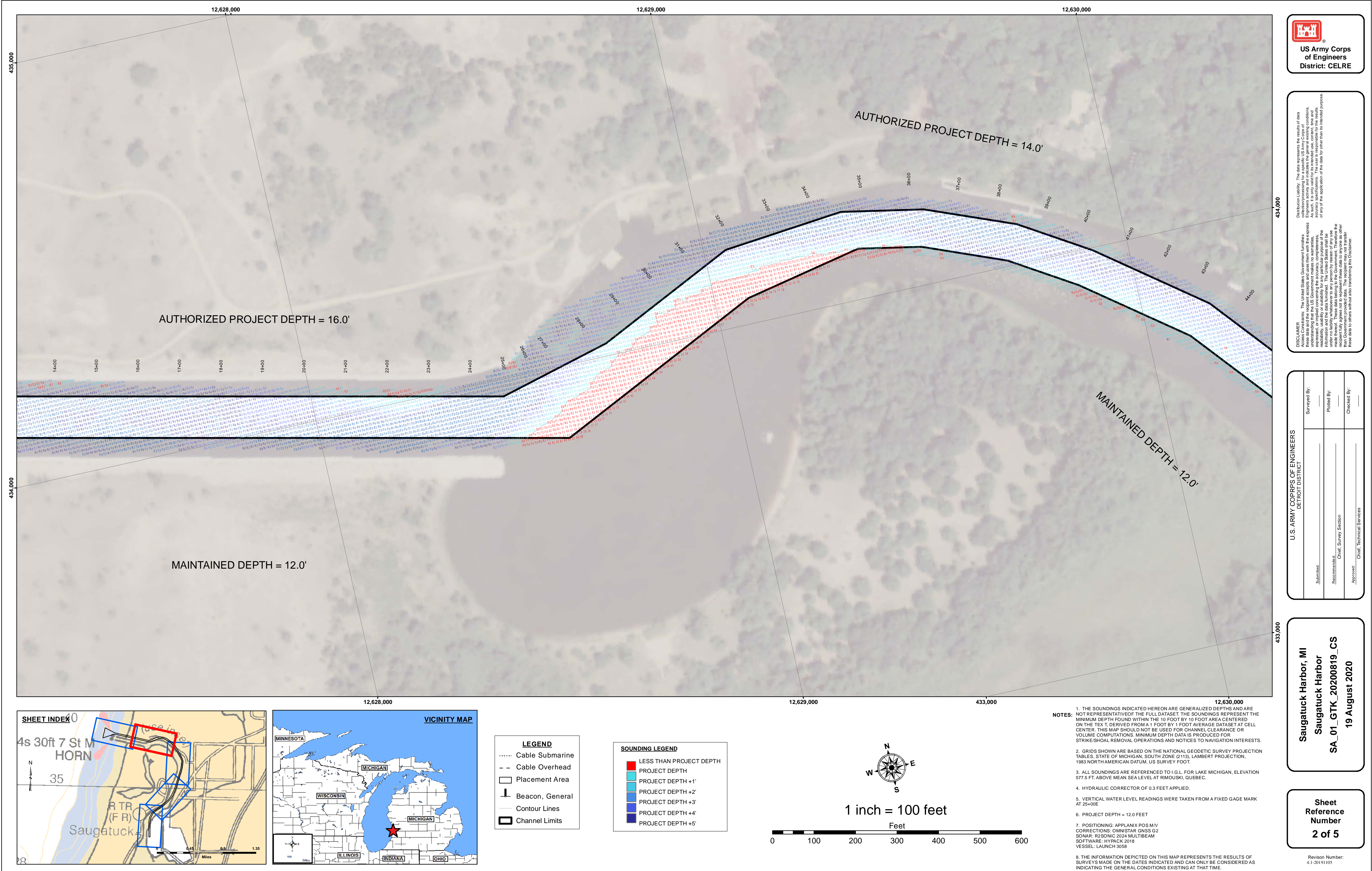


The data is publicly available. The data represents the results of data collection operations, for as provided by the US Army Corps of Engineers. The data is not intended for use in any other manner than the intended purpose of the data. The data is not intended for use in any other manner than the intended purpose of the data. The data is not intended for use in any other manner than the intended purpose of the data.

U.S. ARMY CORPS OF ENGINEERS DETROIT DISTRICT			
Submitted:	Surveyed By:	Plotted By:	Checked By:
Recommended:	Chief, Survey Section		
Approved:	Chief, Technical Services		

Saugatuck Harbor, MI
Saugatuck Harbor
SA_01_GTK_20200819_CS
19 August 2020

Sheet
Reference
Number
1 of 5



The data on this map represents the results of data collection conducted for a specific purpose. The U.S. Army Corps of Engineers actively and regularly updates the general existing conditions of the project area. The user is responsible for the results of any application of the data for other than its intended purpose.

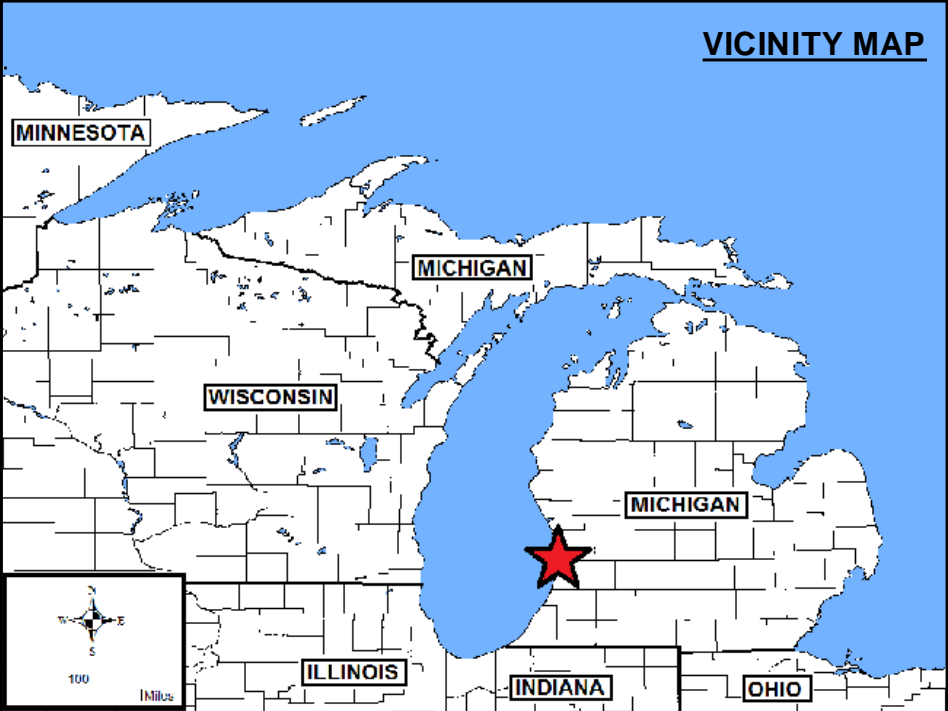
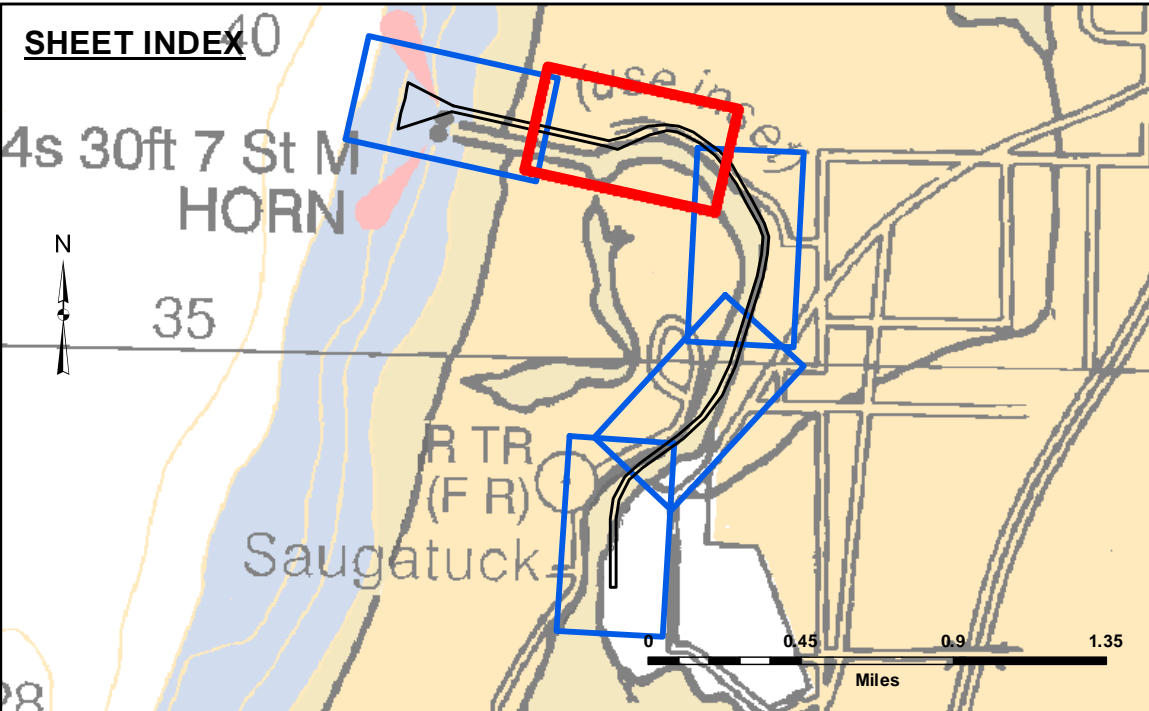
Access Constraints: The United States Government furnishes these data and the recipient accepts and uses them with the express understanding that the data are not to be used for any purpose other than that for which they were provided. The data are not to be used, expressed, or implied concerning the accuracy, completeness, readability, usability or suitability for any particular purpose of the recipient. The data are provided "as is" and the recipient is under no liability whatsoever to any person by reason of any use made thereof. These data belong to the Government. Therefore the recipient is prohibited from making any reproduction or distribution of these data to others without also transferring this Disclaimer.

U.S. ARMY CORPS OF ENGINEERS DETROIT DISTRICT		
Submitted:	Surveyed By:	
Recommended:	Plotted By:	
Approved:	Chief, Survey Section	
	Chief, Technical Services	

Saugatuck Harbor, MI
Saugatuck Harbor
SA_01_GTK_20200819_CS
19 August 2020

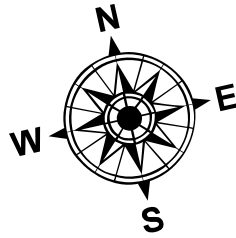
Sheet
Reference
Number
2 of 5

Revision Number:
4.1-20191105

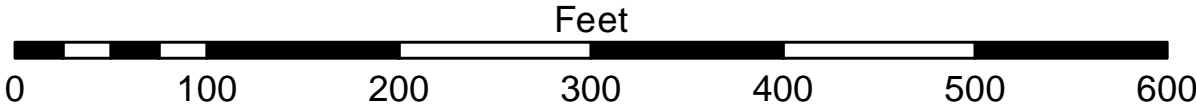


LEGEND	
-----	Cable Submarine
- - - -	Cable Overhead
□	Placement Area
⊥	Beacon, General
—	Contour Lines
□	Channel Limits

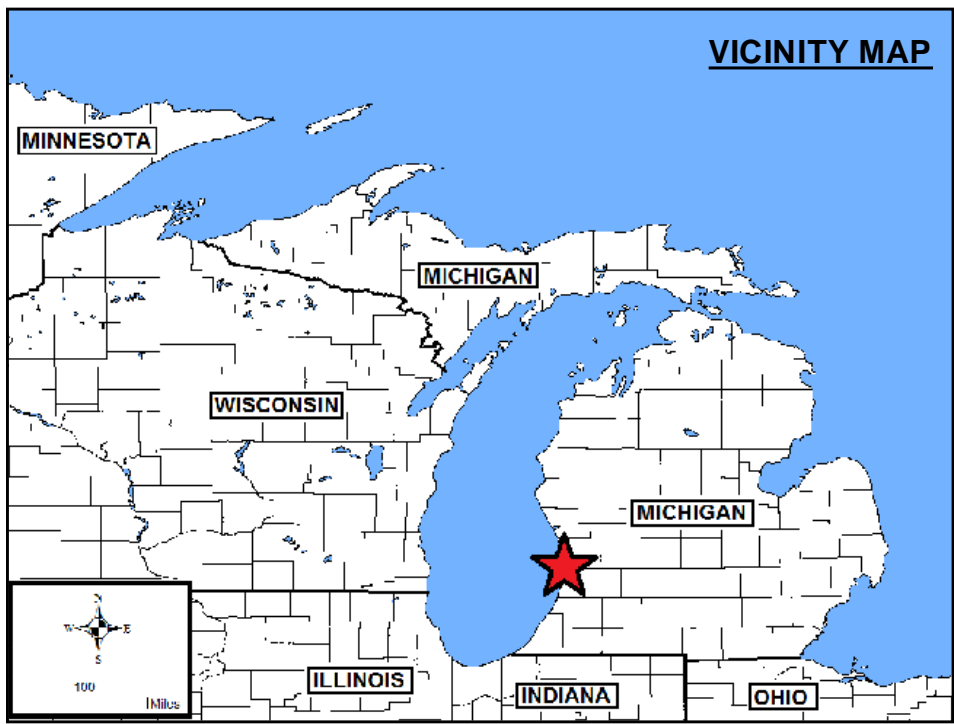
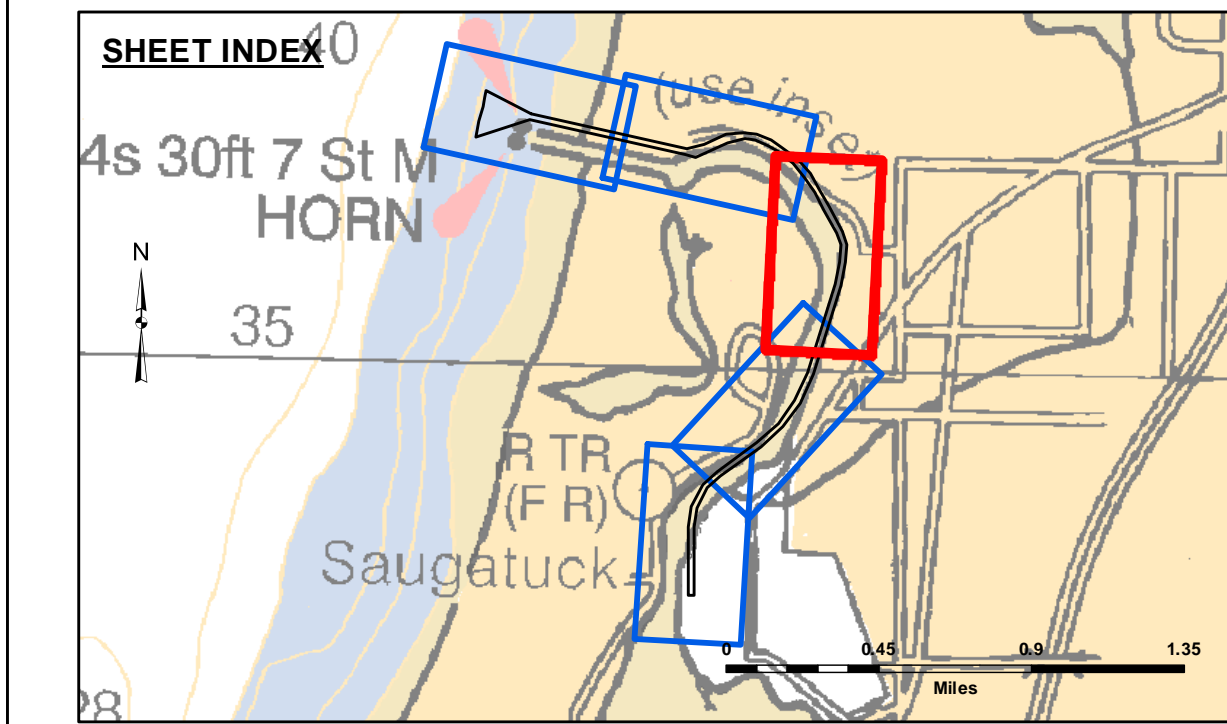
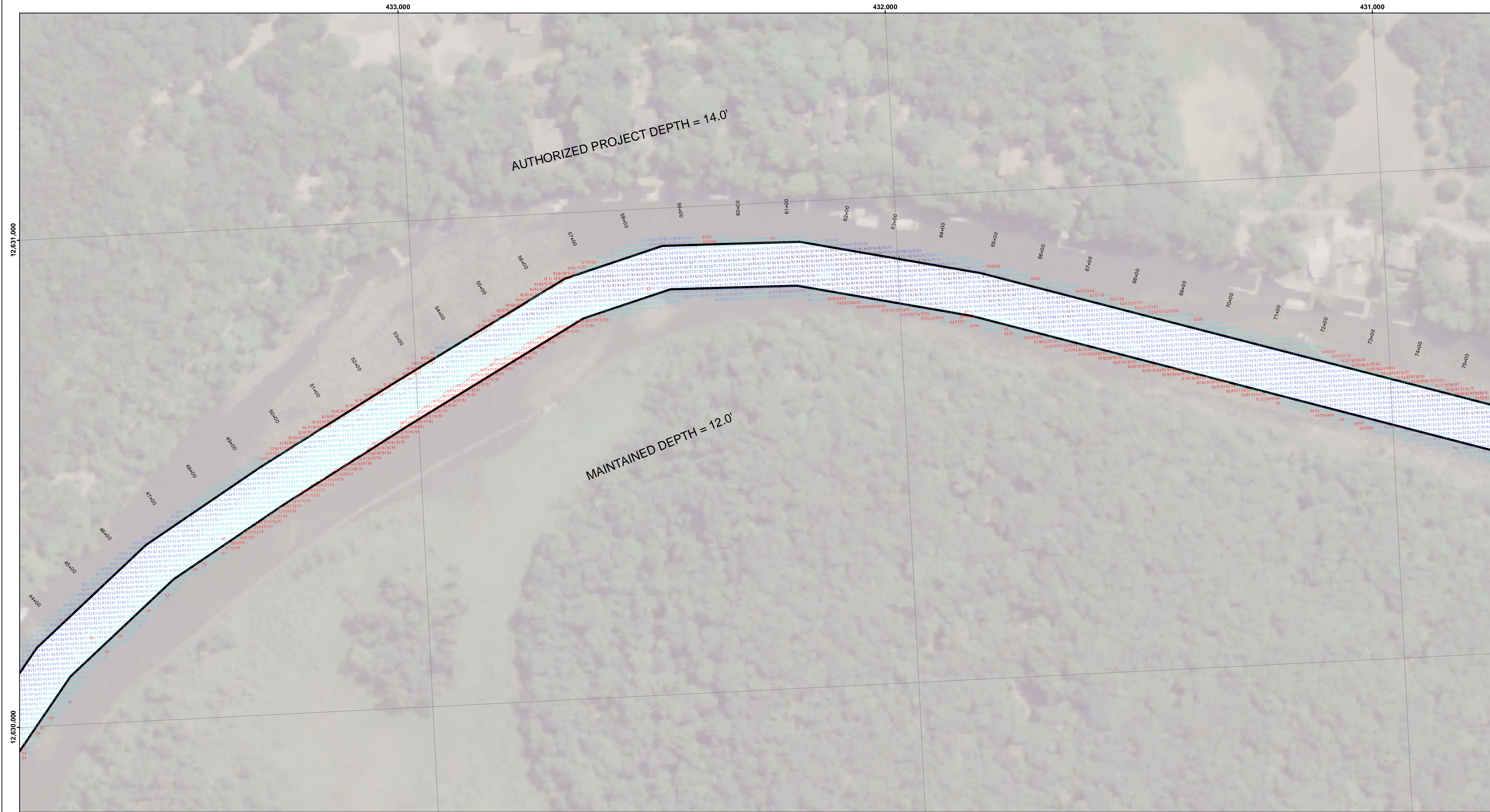
SOUNDING LEGEND	
■	LESS THAN PROJECT DEPTH
■	PROJECT DEPTH
■	PROJECT DEPTH +1'
■	PROJECT DEPTH +2'
■	PROJECT DEPTH +3'
■	PROJECT DEPTH +4'
■	PROJECT DEPTH +5'



1 inch = 100 feet



- NOTES:**
1. THE SOUNDINGS INDICATED HEREON ARE GENERALIZED DEPTHS AND ARE NOT REPRESENTATIVE OF THE FULL DATASET. THE SOUNDINGS REPRESENT THE MINIMUM DEPTH FOUND WITHIN THE 10 FOOT BY 10 FOOT AREA CENTERED ON THE TEXT DERIVED FROM A 1 FOOT BY 1 FOOT AVERAGE DATASET AT CELL CENTER. THIS MAP SHOULD NOT BE USED FOR CHANNEL CLEARANCE OR VOLUME COMPUTATIONS. MINIMUM DEPTH DATA IS PRODUCED FOR STRIKE/SOAL REMOVAL OPERATIONS AND NOTICES TO NAVIGATION INTERESTS.
 2. GRIDS SHOWN ARE BASED ON THE NATIONAL GEODETIC SURVEY PROJECTION TABLES, STATE OF MICHIGAN, SOUTH ZONE (2113), LAMBERT PROJECTION, 1983 NORTH AMERICAN DATUM, US SURVEY FOOT.
 3. ALL SOUNDINGS ARE REFERENCED TO I.G.L. FOR LAKE MICHIGAN, ELEVATION 577.5 FT. ABOVE MEAN SEA LEVEL AT RIMOUSKI, QUEBEC.
 4. HYDRAULIC CORRECTOR OF 0.3 FEET APPLIED.
 5. VERTICAL WATER LEVEL READINGS WERE TAKEN FROM A FIXED GAGE MARK AT 25+00E
 6. PROJECT DEPTH = 12.0 FEET
 7. POSITIONING: APPLANIX POS M/V
CORRECTIONS: OMNISTAR GNSS G2
SONAR: R2SONIC 2024 MULTIBEAM
SOFTWARE: HYDRACK 2018
VESSEL: LAUNCH 3058
 8. THE INFORMATION DEPICTED ON THIS MAP REPRESENTS THE RESULTS OF SURVEYS MADE ON THE DATES INDICATED AND CAN ONLY BE CONSIDERED AS INDICATING THE GENERAL CONDITIONS EXISTING AT THAT TIME.



LEGEND

- Cable Submarine
- - Cable Overhead
- Placement Area
- ⊥ Beacon, General
- Contour Lines
- ▭ Channel Limits

SOUNDING LEGEND

- PROJECT DEPTH
- PROJECT DEPTH +1'
- PROJECT DEPTH +2'
- PROJECT DEPTH +3'
- PROJECT DEPTH +4'
- PROJECT DEPTH +5'

1 inch = 100 feet

Feet

0 100 200 300 400 500 600

Compass rose showing North (N), South (S), East (E), and West (W).

- NOTES:**
1. THE SOUNDINGS INDICATED HEREON ARE GENERALIZED DEPTHS AND ARE NOT REPRESENTATIVE OF THE FULL DATASET. THE SOUNDINGS REPRESENT THE MINIMUM DEPTH FOUND WITHIN THE 10 FOOT BY 10 FOOT AREA CENTERED ON THE TEXT DERIVED FROM A 1 FOOT BY 1 FOOT AVERAGE DATASET AT CELL CENTER. THIS MAP SHOULD NOT BE USED FOR CHANNEL CLEARANCE OR VOLUME COMPUTATIONS. MINIMUM DEPTH DATA IS PRODUCED FOR STRIKE/SOAL REMOVAL OPERATIONS AND NOTICES TO NAVIGATION INTERESTS.
 2. GRIDS SHOWN ARE BASED ON THE NATIONAL GEODETIC SURVEY PROJECTION TABLES, STATE OF MICHIGAN, SOUTH ZONE (2113), LAMBERT PROJECTION, 1983 NORTH AMERICAN DATUM, US SURVEY FOOT.
 3. ALL SOUNDINGS ARE REFERENCED TO I.G.L. FOR LAKE MICHIGAN, ELEVATION 577.5 FT ABOVE MEAN SEA LEVEL AT RIMOUSKI, QUEBEC.
 4. HYDRAULIC CORRECTOR OF 0.3 FEET APPLIED.
 5. VERTICAL WATER LEVEL READINGS WERE TAKEN FROM A FIXED GAGE MARK AT 25+00E
 6. PROJECT DEPTH = 12.0 FEET
 7. POSITIONING: APPLANIX POS M/V
CORRECTIONS: OMNISTAR GNSS G2
SONAR: R2SONIC 2024 MULTIBEAM
SOFTWARE: HYPACK 2018
VESSEL: LAUNCH 3058
 8. THE INFORMATION DEPICTED ON THIS MAP REPRESENTS THE RESULTS OF SURVEYS MADE ON THE DATES INDICATED AND CAN ONLY BE CONSIDERED AS INDICATING THE GENERAL CONDITIONS EXISTING AT THAT TIME.

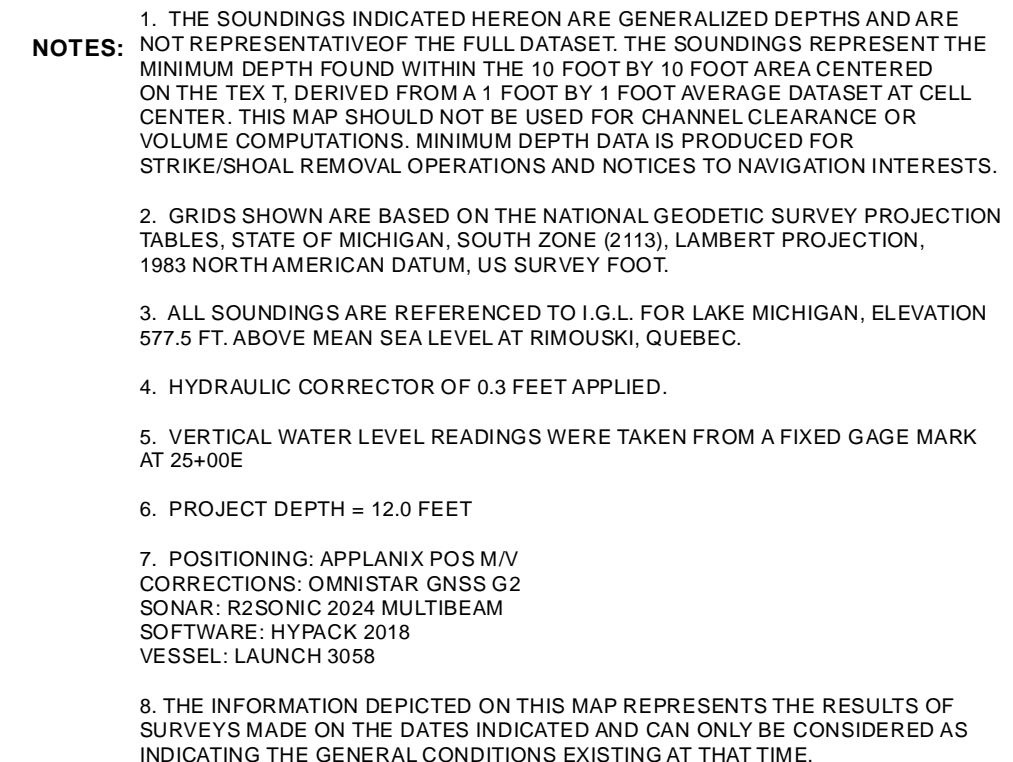
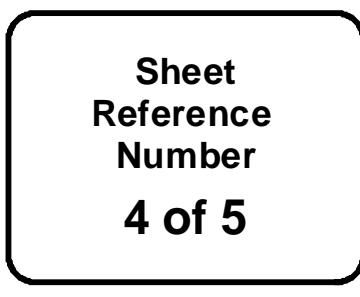

**US Army Corps
of Engineers**
District: CELRE

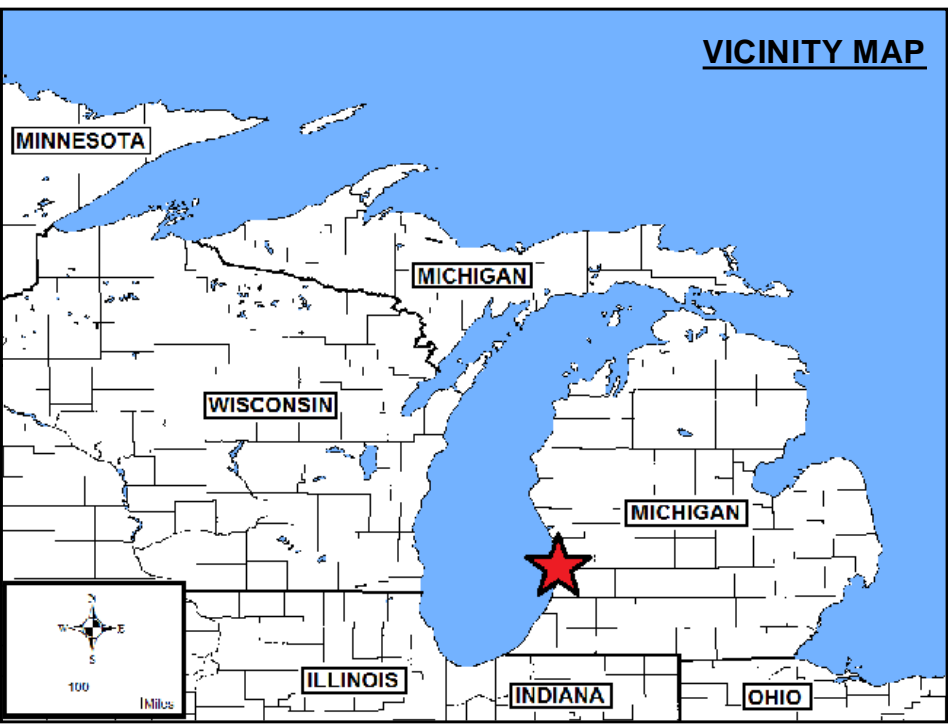
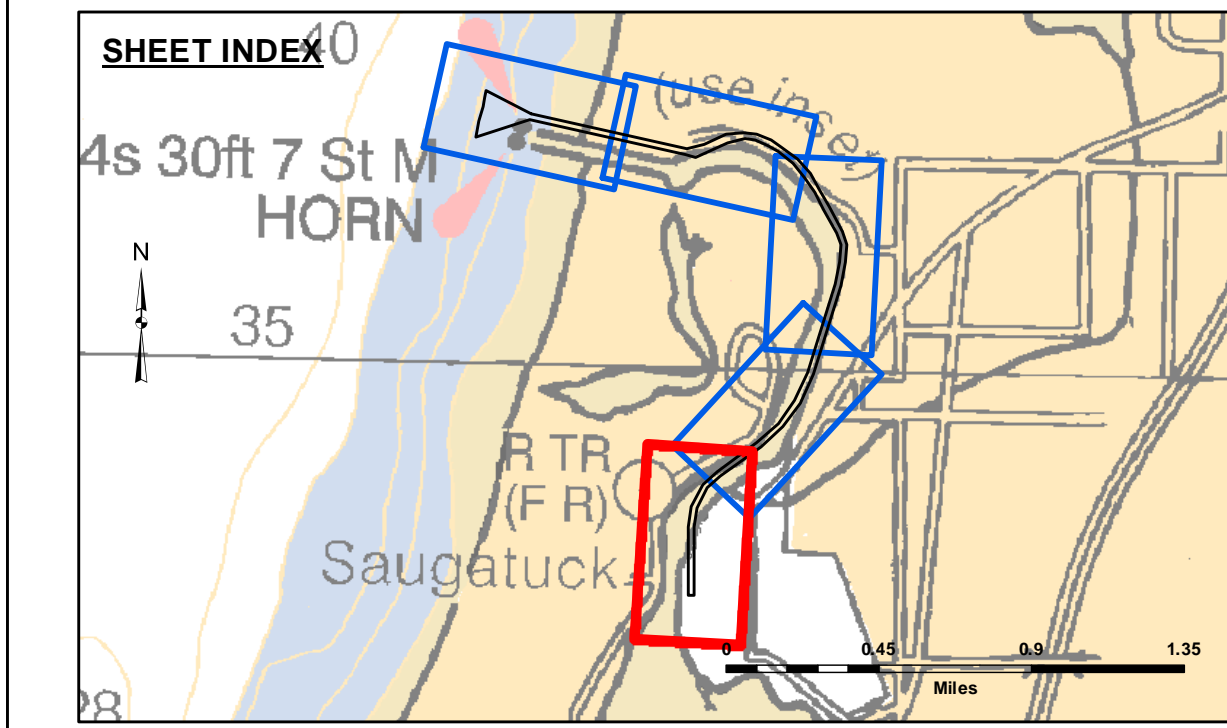
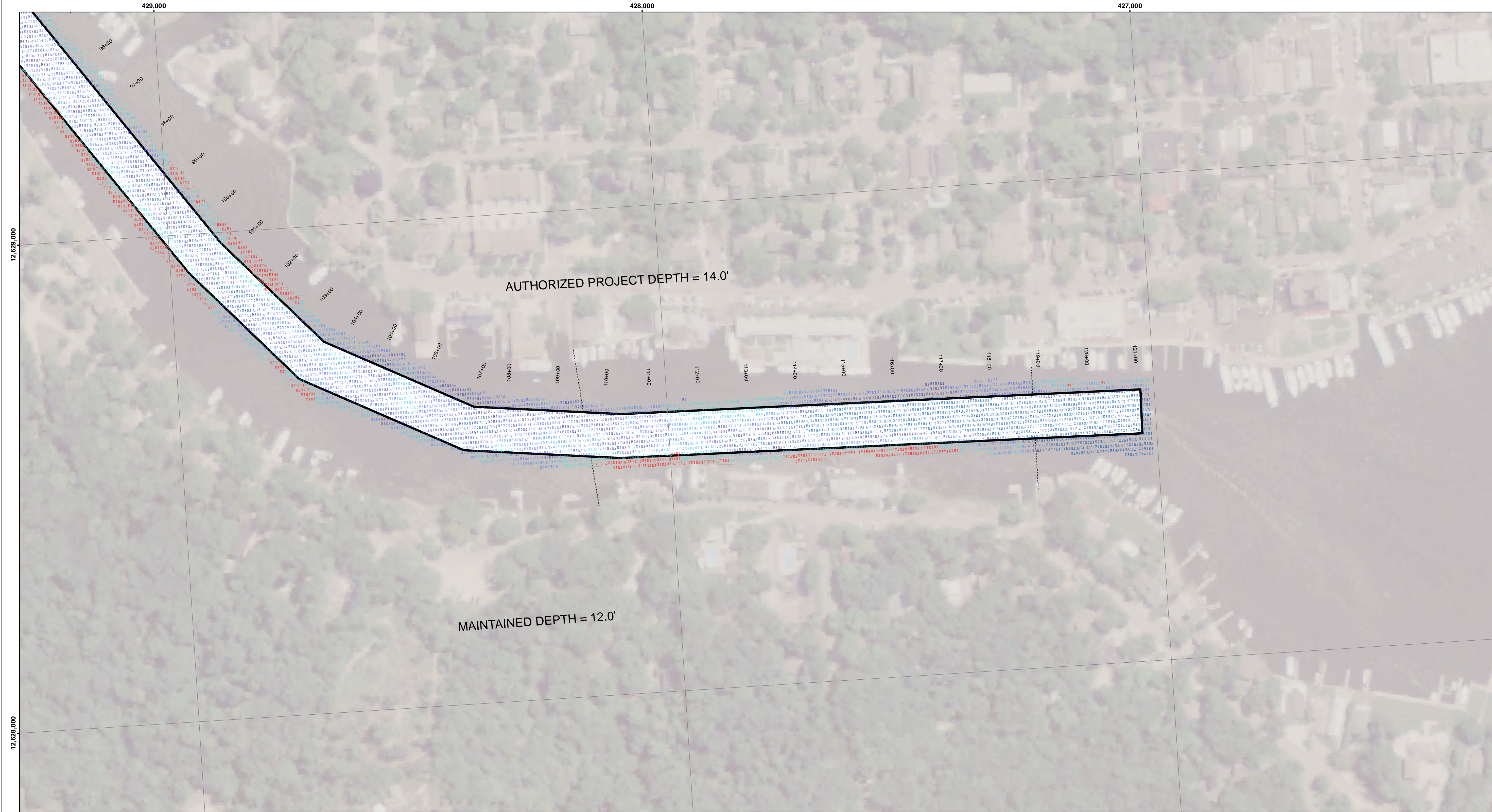
The data on this map represents the results of data collection conducted for a specific purpose. The data is not intended for use in any other manner than that for which it was collected. The data is not intended for use in any other manner than that for which it was collected. The data is not intended for use in any other manner than that for which it was collected.

U.S. ARMY CORPS OF ENGINEERS DETROIT DISTRICT			
Submitted:	Surveyed By:	Plotted By:	Checked By:
Recommended:	Chief, Survey Section		
Approved:	Chief, Technical Services		

Saugatuck Harbor, MI
Saugatuck Harbor
SA_01_GTK_20200819_CS
19 August 2020

**Sheet
Reference
Number**
3 of 5





LEGEND

- Cable Submarine
- - Cable Overhead
- Placement Area
- ⊥ Beacon, General
- Contour Lines
- ▭ Channel Limits

SOUNDING LEGEND

- LESS THAN PROJECT DEPTH
- PROJECT DEPTH
- PROJECT DEPTH +1'
- PROJECT DEPTH +2'
- PROJECT DEPTH +3'
- PROJECT DEPTH +4'
- PROJECT DEPTH +5'

1 inch = 100 feet

Feet

0 100 200 300 400 500 600

- NOTES:**
1. THE SOUNDINGS INDICATED HEREON ARE GENERALIZED DEPTHS AND ARE NOT REPRESENTATIVE OF THE FULL DATASET. THE SOUNDINGS REPRESENT THE MINIMUM DEPTH FOUND WITHIN THE 10 FOOT BY 10 FOOT AREA CENTERED ON THE TEXT DERIVED FROM A 1 FOOT BY 1 FOOT AVERAGE DATASET AT CELL CENTER. THIS MAP SHOULD NOT BE USED FOR CHANNEL CLEARANCE OR VOLUME COMPUTATIONS. MINIMUM DEPTH DATA IS PRODUCED FOR STRIKE/SHOAL REMOVAL OPERATIONS AND NOTICES TO NAVIGATION INTERESTS.
 2. GRIDS SHOWN ARE BASED ON THE NATIONAL GEODETIC SURVEY PROJECTION TABLES, STATE OF MICHIGAN, SOUTH ZONE (2113), LAMBERT PROJECTION, 1983 NORTH AMERICAN DATUM, US SURVEY FOOT.
 3. ALL SOUNDINGS ARE REFERENCED TO I.G.L. FOR LAKE MICHIGAN, ELEVATION 577.5 FT. ABOVE MEAN SEA LEVEL AT RIMOUSKI, QUEBEC.
 4. HYDRAULIC CORRECTOR OF 0.3 FEET APPLIED.
 5. VERTICAL WATER LEVEL READINGS WERE TAKEN FROM A FIXED GAGE MARK AT 25+00E
 6. PROJECT DEPTH = 12.0 FEET
 7. POSITIONING: APPLANIX POS M/V
CORRECTIONS: OMNISTAR GNSS G2
SONAR: R2SONIC 2024 MULTIBEAM
SOFTWARE: HYPPACK 2018
VESSEL: LAUNCH 3058
 8. THE INFORMATION DEPICTED ON THIS MAP REPRESENTS THE RESULTS OF SURVEYS MADE ON THE DATES INDICATED AND CAN ONLY BE CONSIDERED AS INDICATING THE GENERAL CONDITIONS EXISTING AT THAT TIME.


**US Army Corps
of Engineers**
District: CELRE

DISCLAIMER: The data represents the results of data collection activities for a specific US Army Corps of Engineers activity and indicates the general existing conditions. The data is not intended to be used for any purpose other than its intended purpose. The user is responsible for the results of any of the application of the data for other than its intended purpose.

ACCESS CONSTRAINTS: The United States Government furnishes these data and the recipient accepts and uses them with the express understanding that the data is not to be used for any purpose other than that for which it was provided. The data is not to be used for any purpose other than that for which it was provided. The data is not to be used for any purpose other than that for which it was provided.

**U.S. ARMY CORPS OF ENGINEERS
DETROIT DISTRICT**

Submitted:	Surveyed By:
Recommended:	Printed By:
Approved:	Checked By:

Saugatuck Harbor, MI
Saugatuck Harbor
SA_01_GTK_20200819_CS
19 August 2020

**Sheet
Reference
Number**
5 of 5