

**NOTES:** THE SOUNDINGS INDICATED HEREON ARE GENERALIZED DEPTHS AND ARE NOT REPRESENTATIVE OF THE FULL DATASET. THE SOUNDINGS REPRESENT THE MINIMUM DEPTH FOUND WITHIN THE 10 FOOT BY 10 FOOT AREA CENTERED ON THE TEXTED DEPTH FROM A 1 FOOT BY 1 FOOT AVERAGE DATASET AT CELL CENTER. THIS MAP SHOULD NOT BE USED FOR CHANNEL CLEARANCE OR VOLUME COMPUTATIONS. MINIMUM DEPTH DATA IS PRODUCED FOR STRIKE/SLOPE REMOVAL OPERATIONS AND NOTICES TO NAVIGATION INTERESTS.

THE SOUNDINGS DEPICTED HEREIN ARE EXPRESSED IN U.S. SURVEY FEET AND TENTHS THEREOF AND ARE REFERENCED TO THE FOLLOWING DATUMS:

HORIZONTAL: MICHIGAN STATE PLANE COORDINATE SYSTEM, MICHIGAN SOUTH ZONE 42113, NORTH AMERICAN DATUM (NAD) OF 1983, U.S. SURVEY FEET

VERTICAL: INTERNATIONAL GREAT LAKES DATUM (IGLD) OF 1985, THE LOW WATER DATUM FOR THE ROUGE RIVER IS 571.2'.

PROJECT DEPTHS FOR THE ROUGE RIVER INCLUDE: 17', 18', 21' AND 25'

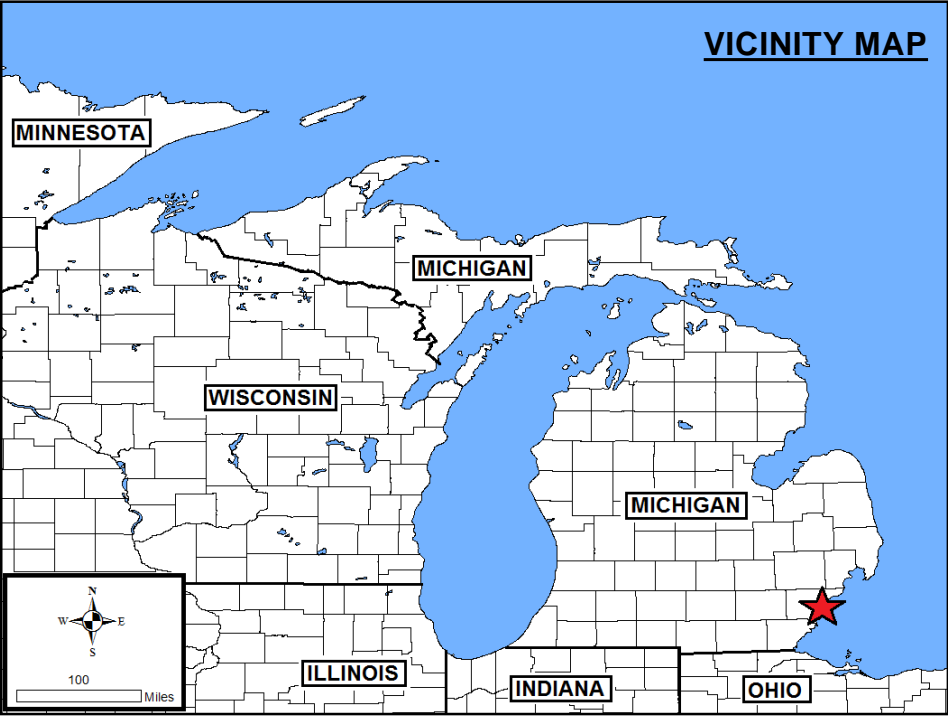
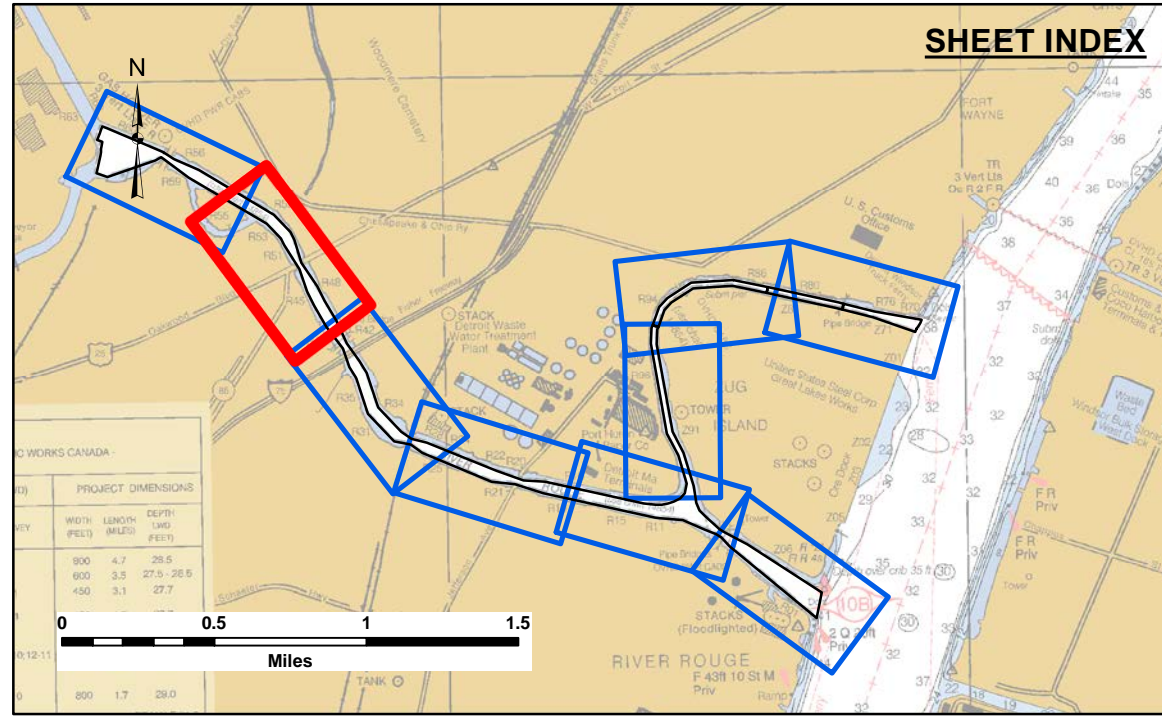
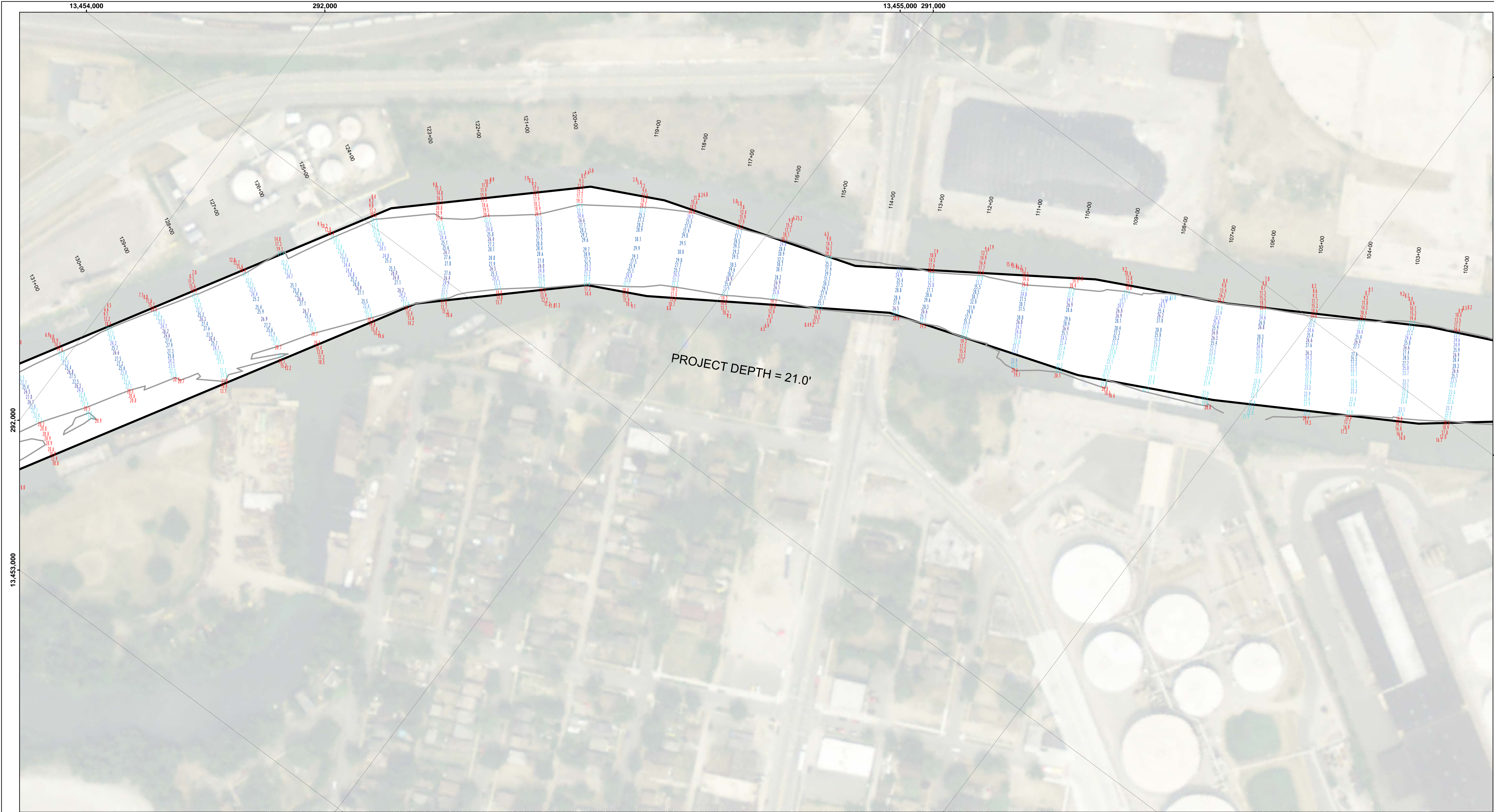
TIDE VALUES ARE DERIVED FROM THE NATIONAL OCEANIC AND ATMOSPHERIC ADMINISTRATION (NOAA) WATER LEVEL STATIONS:

FT WAYNE: MI (#9044036)  
TEMPORARY GAGE BOARD SET AT THE JEFFERSON AVE BRIDGE.

THE SURVEY WAS CONDUCTED USING THE U.S.A.C.E. SURVEY VESSEL(S) 58 SKIFF, EMPLOYING THE FOLLOWING COMPONENTS:

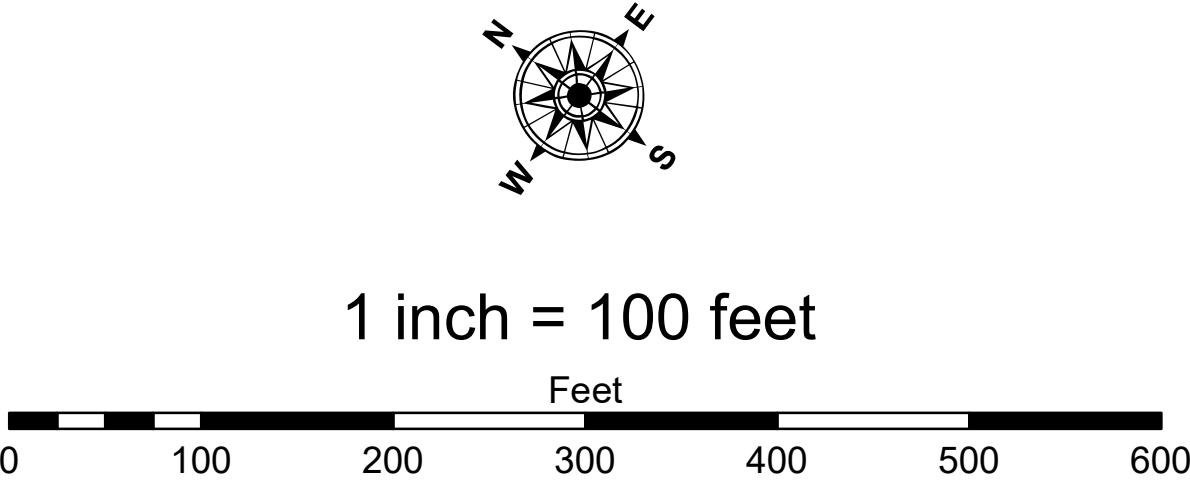
POSITIONING: APPLAUX PLUS V-M  
CORRECTIONS: VRS/RTK OR MARINESTAR GNS  
SONAR: CV-300 (SINGLE-BEAM)  
ECHO: HYDRO





- LEGEND**
- ..... Cable Submarine
  - - Cable Overhead
  - Placement Area
  - Beacon, General
  - Contour Lines
  - Channel\_Limits

- SOUNDING LEGEND**
- LESS THAN PROJECT DEPTH
  - PROJECT DEPTH
  - PROJECT DEPTH +1'
  - PROJECT DEPTH +2'
  - PROJECT DEPTH +3'
  - PROJECT DEPTH +4'
  - PROJECT DEPTH +5'



**NOTES:** THE SOUNDINGS INDICATED HEREON ARE GENERALIZED DEPTHS AND ARE NOT REPRESENTATIVE OF THE FULL DATASET. THE SOUNDINGS REPRESENT THE MINIMUM DEPTH FOUND WITHIN THE 10 FOOT BY 10 FOOT AREA CENTERED ON THE TEXT. DERIVED FROM A 1 FOOT BY 1 FOOT AVERAGE DATASET AT CELL CENTER. THIS MAP SHOULD NOT BE USED FOR CHANNEL CLEARANCE OR VOLUME COMPUTATIONS. MINIMUM DEPTH DATA IS PRODUCED FOR STRIKE/SOAL REMOVAL OPERATIONS AND NOTICES TO NAVIGATION INTERESTS.

THE SOUNDINGS DEPICTED HEREIN ARE EXPRESSED IN U.S. SURVEY FEET AND TENTHS THEREOF AND ARE REFERENCED TO THE FOLLOWING DATUMS:

HORIZONTAL: MICHIGAN STATE PLANE COORDINATE SYSTEM, MICHIGAN SOUTH ZONE #2113, NORTH AMERICAN DATUM (NAD) OF 1983, U.S. SURVEY FEET

VERTICAL: INTERNATIONAL GREAT LAKES DATUM (IGLD) OF 1985. THE LOW WATER DATUM FOR THE ROUGE RIVER IS 571.2'.

PROJECT DEPTHS FOR THE ROUGE RIVER INCLUDE: 17', 18', 21' AND 25'

TIDE VALUES ARE DERIVED FROM THE NATIONAL OCEANIC AND ATMOSPHERIC ADMINISTRATION (NOAA) WATER LEVEL STATIONS:

FT WAYNE, MI (#9044036)  
TEMPORARY GAGE BOARD SET AT THE JEFFERSON AVE BRIDGE.

THE SURVEY WAS CONDUCTED USING THE U.S.A.C.E. SURVEY VESSEL(S) SB SKIFF EMPLOYING THE FOLLOWING COMPONENTS:  
POSITIONING: APPLANIX POS-M/V  
CORRECTIONS: VRS/RTK OR MARINESTAR GNSS  
SONAR: CV-300 (SINGLE-BEAM)  
SOFTWARE: HYPACK



DISCLAIMER: The data presented in the results of data collection is for informational purposes only. The data is not intended for use in any other manner. The user is responsible for the results of any application of the data for other than its intended purpose. Engineers activity and indicates the general existing conditions. The user is responsible for the results of any application of the data for other than its intended purpose.

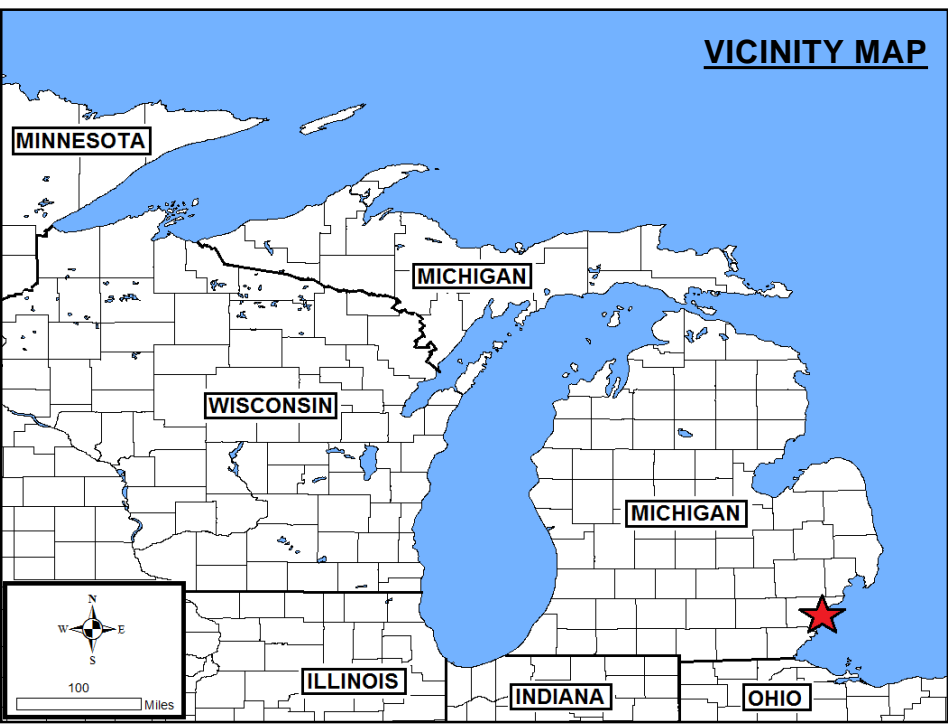
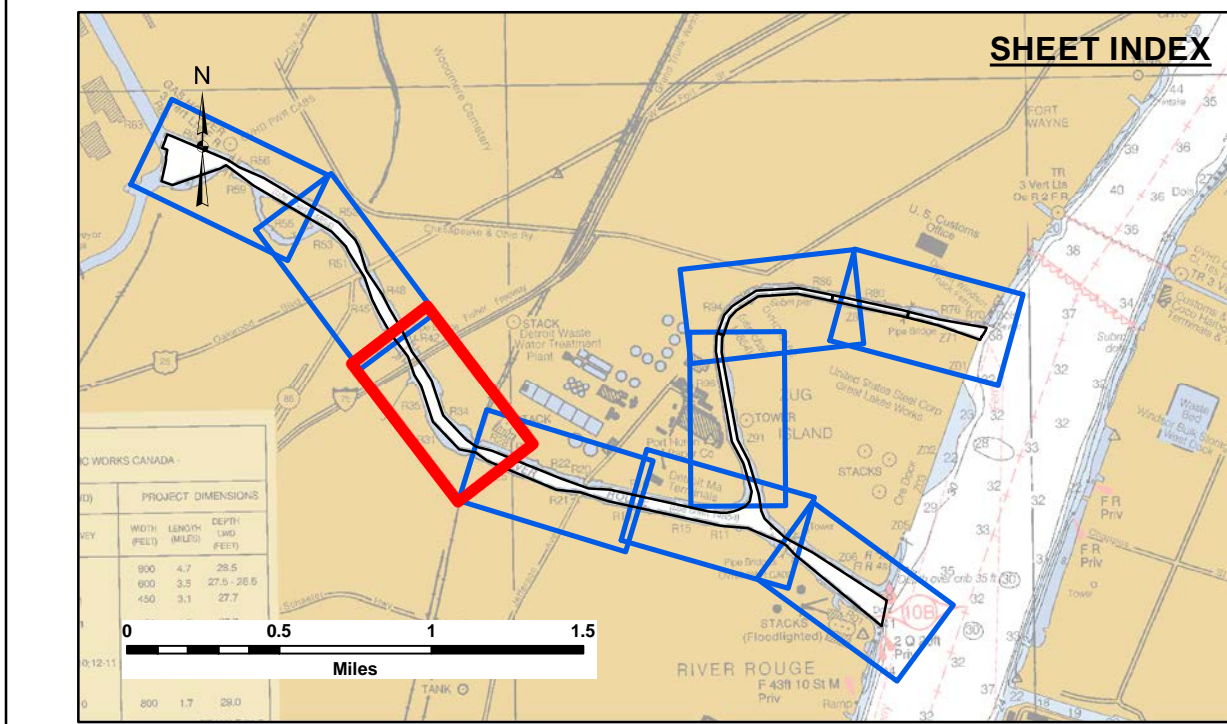
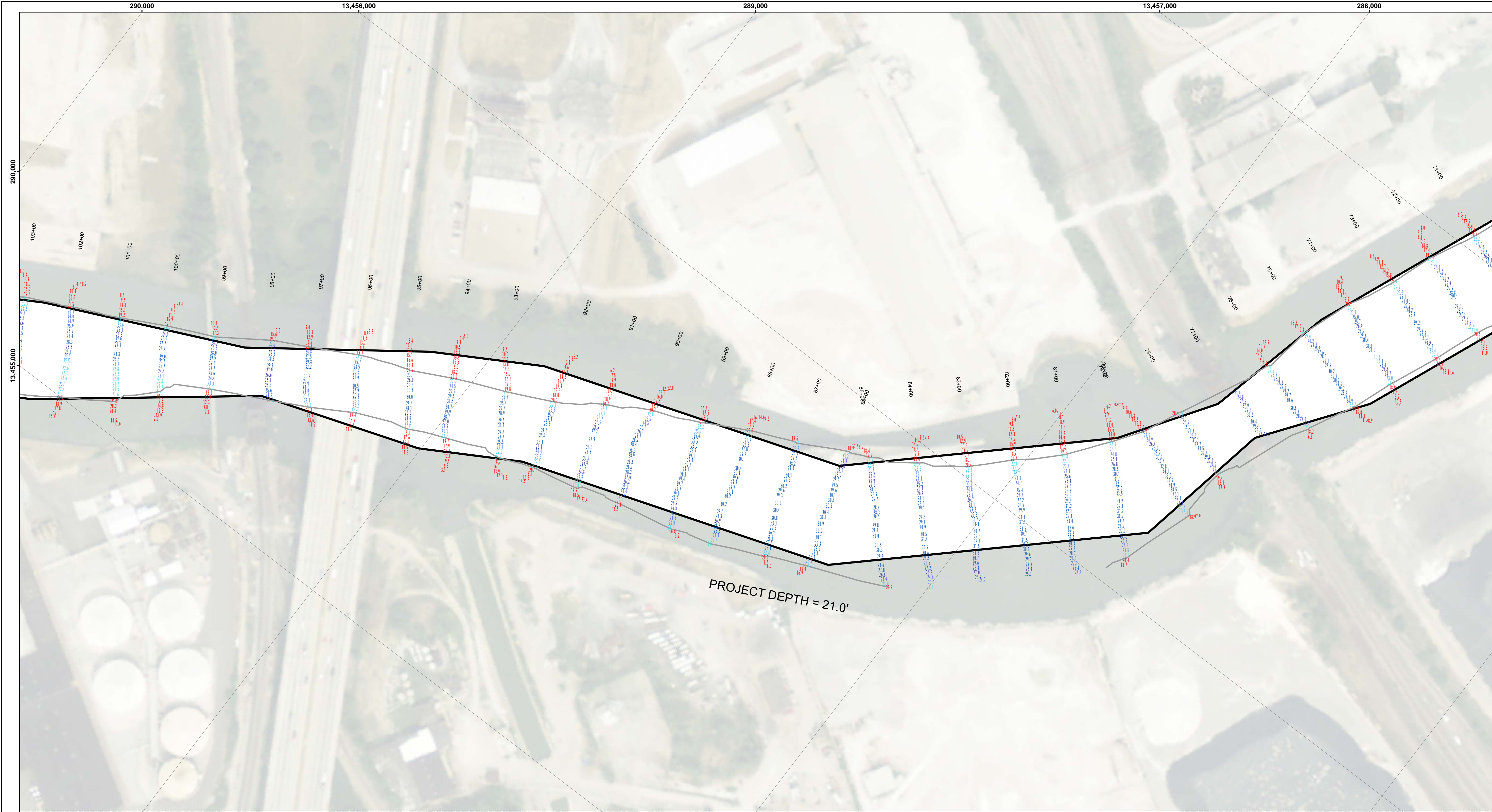
DISCLAIMER: The United States Government furnishes these data and the recipient accepts and uses them with the express understanding that the data is not intended for use in any other manner. The user is responsible for the results of any application of the data for other than its intended purpose. The data is not intended for use in any other manner. The user is responsible for the results of any application of the data for other than its intended purpose.

U.S. ARMY CORPS OF ENGINEERS DETROIT DISTRICT		
Submitted:	Surveyed By:	
Recommended:	Plotted By:	
Approved:	Checked By:	

**River Rouge, MI**  
**Rouge River**  
**RR\_01\_ROU\_20220511\_CS**  
**11 May 2022**

**Sheet**  
**Reference**  
**Number**  
**2 of 9**





**LEGEND**

- ..... Cable Submarine
- - Cable Overhead
- Placement Area
- ┆ Beacon, General
- Contour Lines
- ▭ Channel\_Limits

**SOUNDING LEGEND**

- LESS THAN PROJECT DEPTH
- PROJECT DEPTH
- PROJECT DEPTH +1'
- PROJECT DEPTH +2'
- PROJECT DEPTH +3'
- PROJECT DEPTH +4'
- PROJECT DEPTH +5'

1 inch = 100 feet

Feet

0 100 200 300 400 500 600

**NOTES:** THE SOUNDINGS INDICATED HEREON ARE GENERALIZED DEPTHS AND ARE NOT REPRESENTATIVE OF THE FULL DATASET. THE SOUNDINGS REPRESENT THE MINIMUM DEPTH FOUND WITHIN THE 10 FOOT BY 10 FOOT AREA CENTERED ON THE TEXT. DERIVED FROM A 1 FOOT BY 1 FOOT AVERAGE DATASET AT CELL CENTER. THIS MAP SHOULD NOT BE USED FOR CHANNEL CLEARANCE OR VOLUME COMPUTATIONS. MINIMUM DEPTH DATA IS PRODUCED FOR STRIKE/SOAL REMOVAL OPERATIONS AND NOTICES TO NAVIGATION INTERESTS.

THE SOUNDINGS DEPICTED HEREIN ARE EXPRESSED IN U.S. SURVEY FEET AND TENTHS THEREOF AND ARE REFERENCED TO THE FOLLOWING DATUMS:

HORIZONTAL: MICHIGAN STATE PLANE COORDINATE SYSTEM, MICHIGAN SOUTH ZONE #2113, NORTH AMERICAN DATUM (NAD) OF 1983, U.S. SURVEY FEET

VERTICAL: INTERNATIONAL GREAT LAKES DATUM (IGLD) OF 1985. THE LOW WATER DATUM FOR THE ROUGE RIVER IS 571.2'.

PROJECT DEPTHS FOR THE ROUGE RIVER INCLUDE: 17', 18', 21' AND 25'

TIDE VALUES ARE DERIVED FROM THE NATIONAL OCEANIC AND ATMOSPHERIC ADMINISTRATION (NOAA) WATER LEVEL STATIONS:

FT WAYNE, MI (#9044036)  
TEMPORARY GAGE BOARD SET AT THE JEFFERSON AVE BRIDGE.

THE SURVEY WAS CONDUCTED USING THE U.S.A.C.E. SURVEY VESSEL(S) SB SKIFF EMPLOYING THE FOLLOWING COMPONENTS:  
POSITIONING: APPLANIX POS-M/V  
CORRECTIONS: VRS/RTK OR MARINESTAR GNSS  
SONAR: CV-300 (SINGLE-BEAM)  
SOFTWARE: HYPACK

  
**US Army Corps of Engineers**  
District: CELRE

**DISCLAIMER:** The data represents the results of data collection operations for a specific US Army Corps of Engineers activity and indicates the general existing conditions. The data is not intended to be used for any purpose other than its intended purpose. The user is responsible for the results of any application of the data for other than its intended purpose.

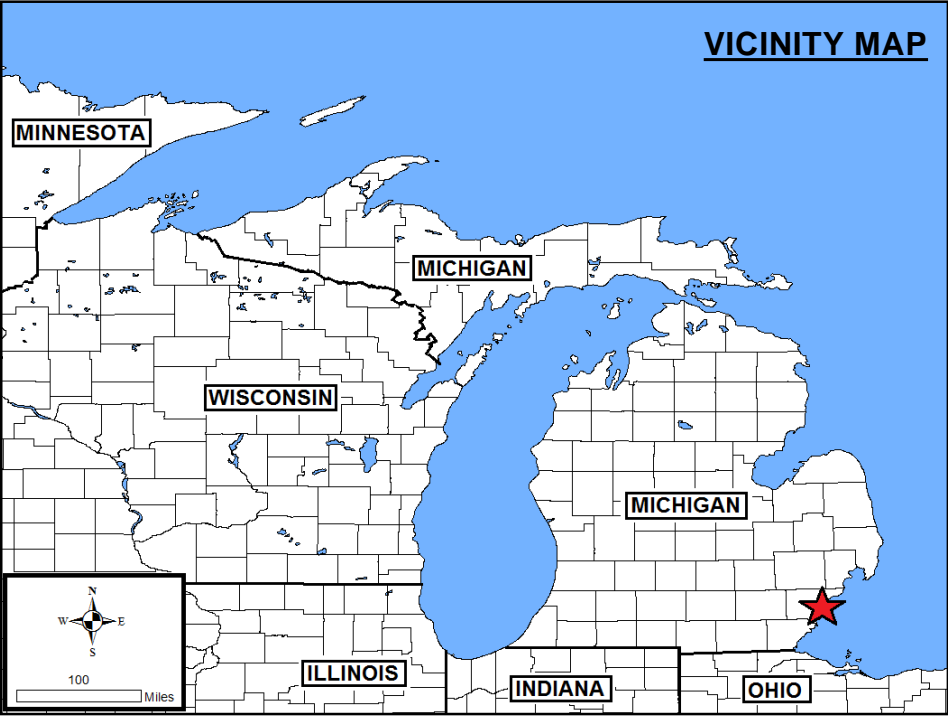
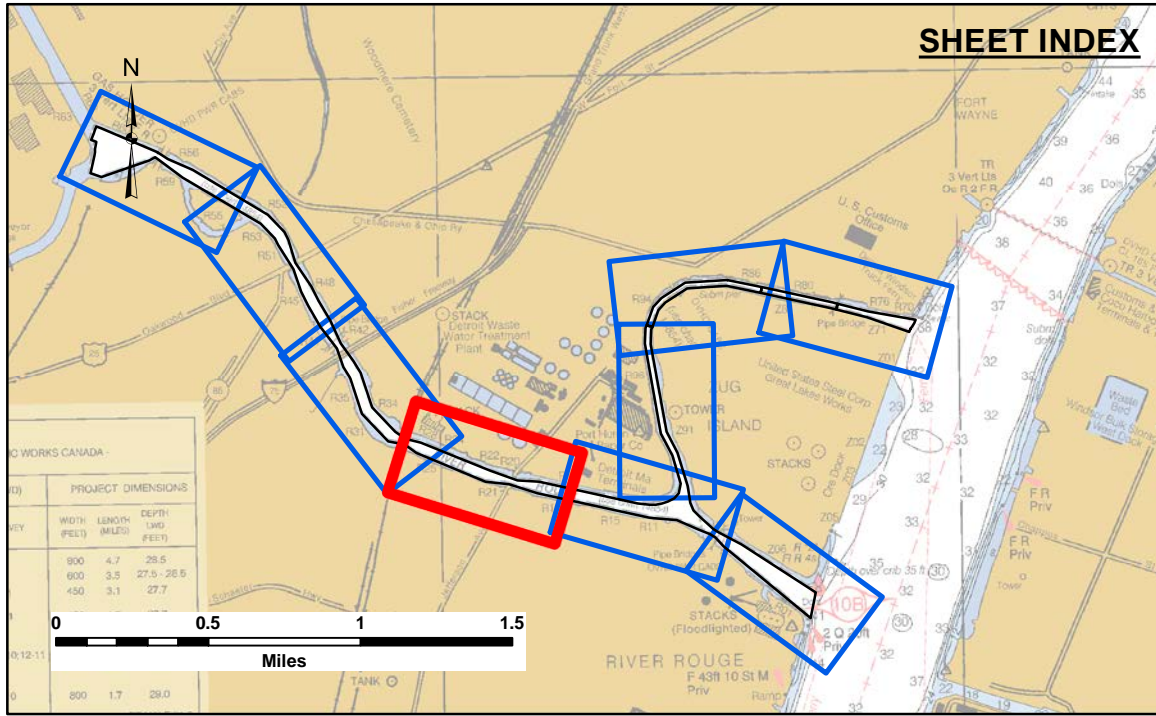
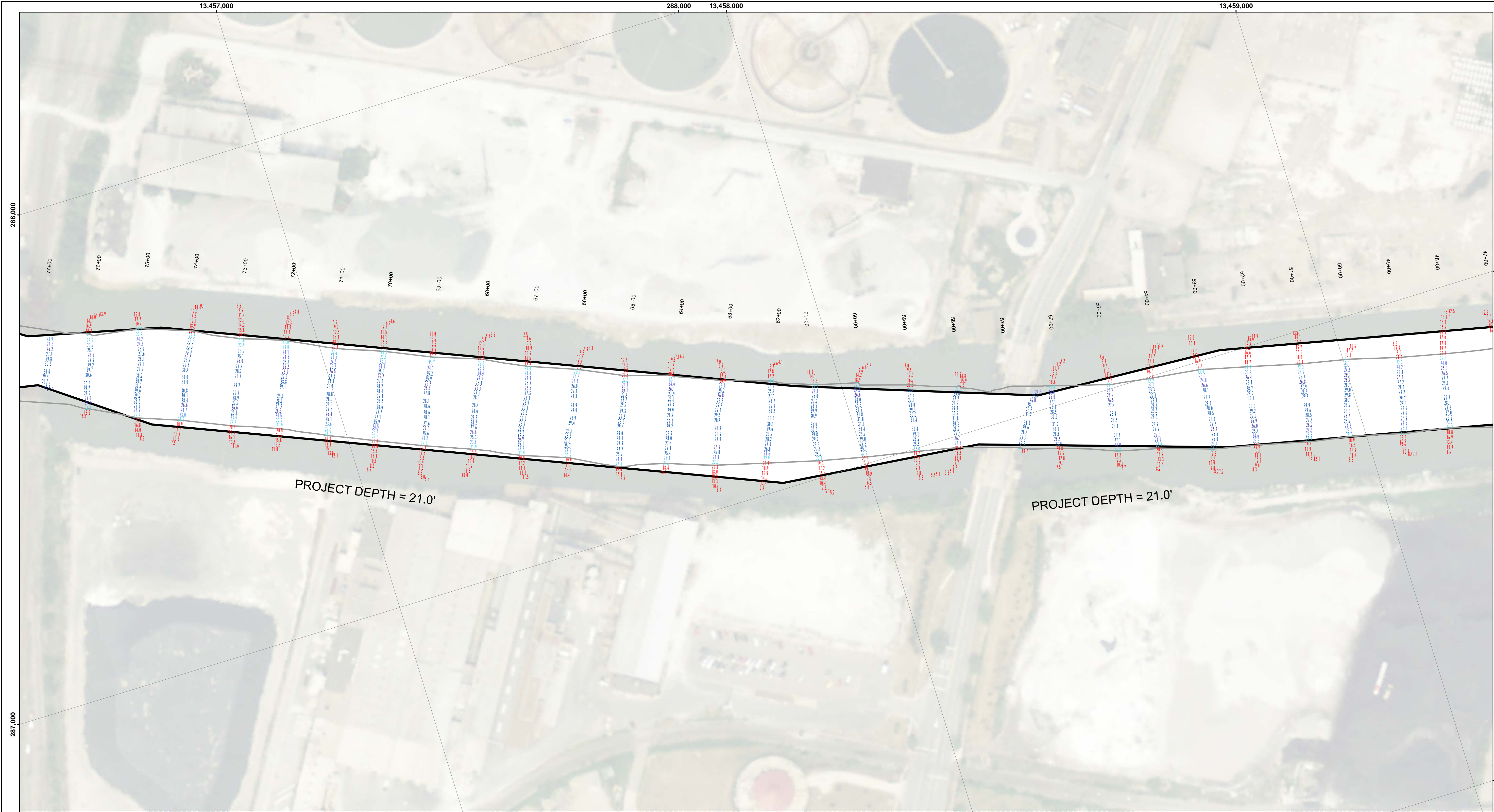
**ACCESS:** The United States Government furnishes these data and the recipient accepts and uses them with the express understanding that the data are not to be used for any purpose other than that for which they were provided. The recipient may not transfer these data to others without also transferring the Disclaimer.

U.S. ARMY CORPS OF ENGINEERS DETROIT DISTRICT		
Submitted:	Surveyed By:	
Recommended:	Plotted By:	
Approved:	Chief, Survey Section	
	Chief, Technical Services	

**River Rouge, MI**  
**Rouge River**  
**RR\_01\_ROU\_20220511\_CS**  
**11 May 2022**

**Sheet Reference Number**  
**3 of 9**





**LEGEND**

- ..... Cable Submarine
- - Cable Overhead
- Placement Area
- └ Beacon, General
- Contour Lines
- ▭ Channel\_Limits

**SOUNDING LEGEND**

- PROJECT DEPTH
- PROJECT DEPTH +1'
- PROJECT DEPTH +2'
- PROJECT DEPTH +3'
- PROJECT DEPTH +4'
- PROJECT DEPTH +5'

1 inch = 100 feet

Feet

0 100 200 300 400 500 600

**NOTES:** THE SOUNDINGS INDICATED HEREON ARE GENERALIZED DEPTHS AND ARE NOT REPRESENTATIVE OF THE FULL DATASET. THE SOUNDINGS REPRESENT THE MINIMUM DEPTH FOUND WITHIN THE 10 FOOT BY 10 FOOT AREA CENTERED ON THE TEXT. DERIVED FROM A 1 FOOT BY 1 FOOT AVERAGE DATASET AT CELL CENTER. THIS MAP SHOULD NOT BE USED FOR CHANNEL CLEARANCE OR VOLUME COMPUTATIONS. MINIMUM DEPTH DATA IS PRODUCED FOR STRIKE/SOAL REMOVAL OPERATIONS AND NOTICES TO NAVIGATION INTERESTS.

THE SOUNDINGS DEPICTED HEREIN ARE EXPRESSED IN U.S. SURVEY FEET AND TENTHS THEREOF AND ARE REFERENCED TO THE FOLLOWING DATUMS:

HORIZONTAL: MICHIGAN STATE PLANE COORDINATE SYSTEM, MICHIGAN SOUTH ZONE #2113, NORTH AMERICAN DATUM (NAD) OF 1983, U.S. SURVEY FEET

VERTICAL: INTERNATIONAL GREAT LAKES DATUM (IGLD) OF 1985. THE LOW WATER DATUM FOR THE ROUGE RIVER IS 571.2'.

PROJECT DEPTHS FOR THE ROUGE RIVER INCLUDE: 17', 18', 21' AND 25'

TIDE VALUES ARE DERIVED FROM THE NATIONAL OCEANIC AND ATMOSPHERIC ADMINISTRATION (NOAA) WATER LEVEL STATIONS:

FT WAYNE, MI (#9044036)  
TEMPORARY GAGE BOARD SET AT THE JEFFERSON AVE BRIDGE.

THE SURVEY WAS CONDUCTED USING THE U.S.A.C.E. SURVEY VESSEL(S) SB SKIFF EMPLOYING THE FOLLOWING COMPONENTS:  
POSITIONING: APPLANIX POS-M/V  
CORRECTIONS: VRS/RTK OR MARINESTAR GNSS  
SONAR: CV-300 (SINGLE-BEAM)  
SOFTWARE: HYPACK

  
**US Army Corps of Engineers**  
District: CELRE

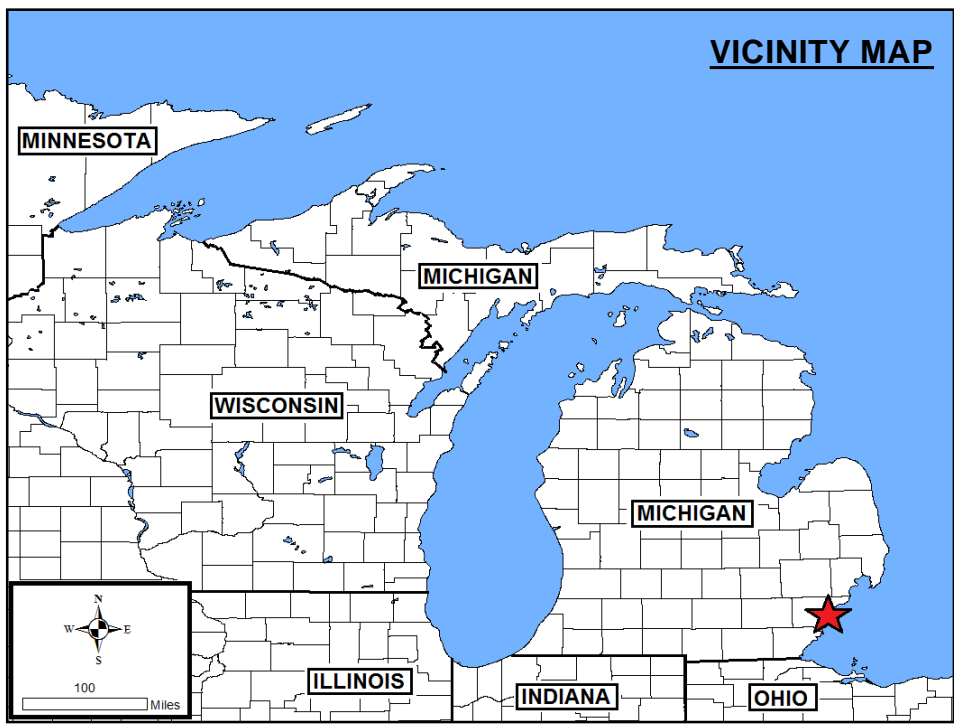
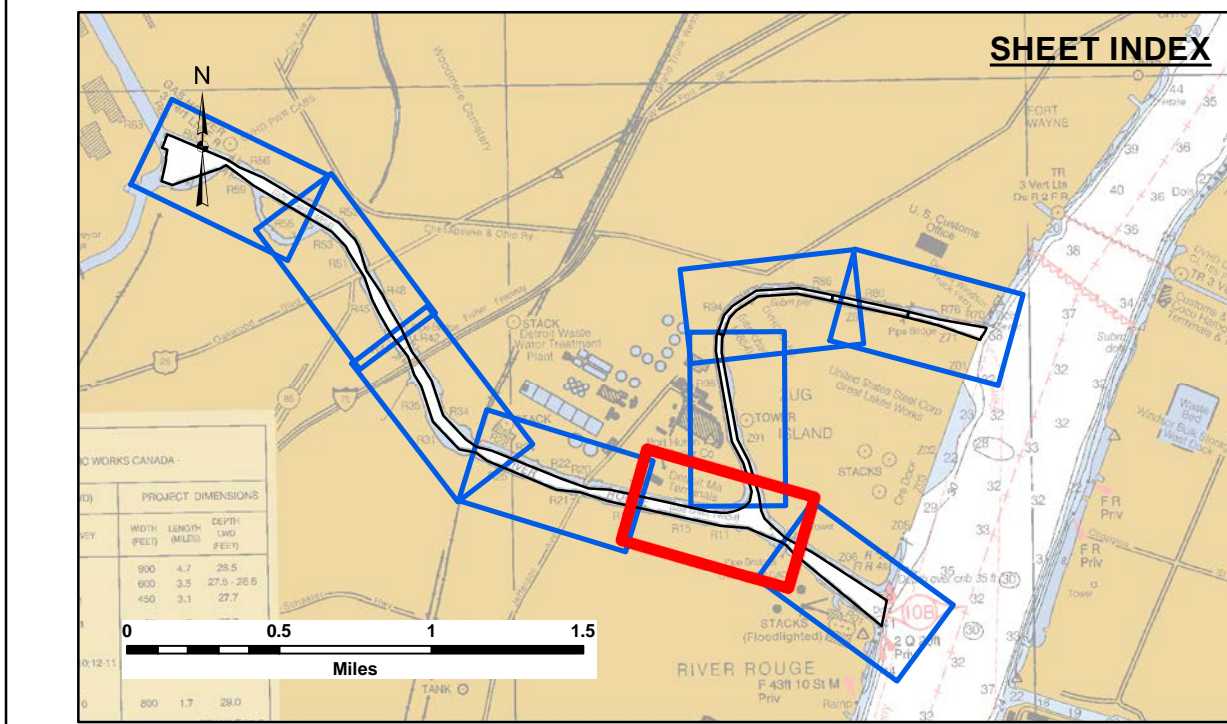
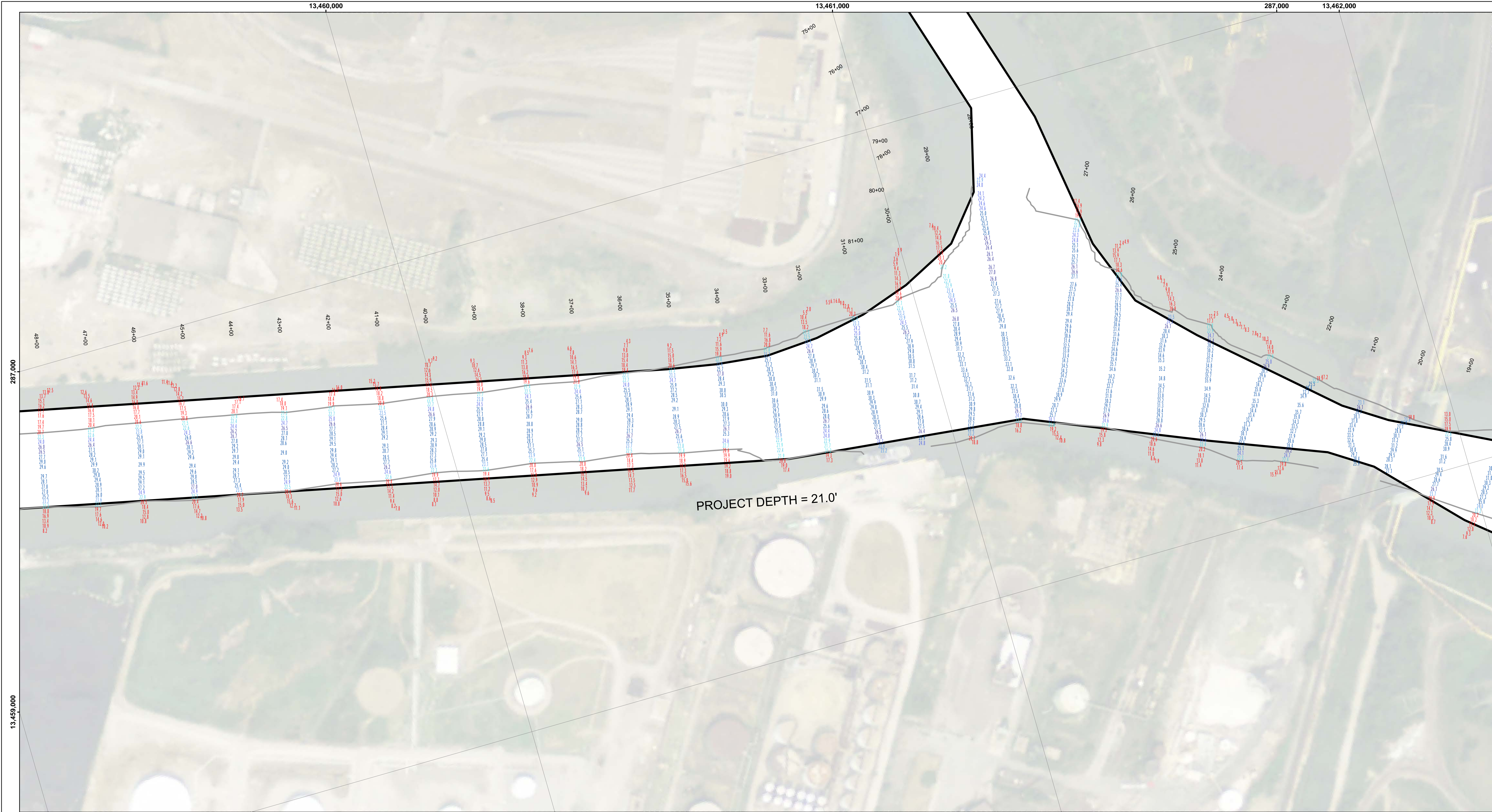
DISCLAIMER: The data presented in this map is for informational purposes only. The data is not intended to be used for navigation or other purposes. The user is responsible for the results of any application of the data for other than its intended purpose. The United States Government makes no warranty, expressed or implied, concerning the accuracy, completeness, or reliability of the data. The user is responsible for the results of any application of the data for other than its intended purpose. The user is responsible for the results of any application of the data for other than its intended purpose. The user is responsible for the results of any application of the data for other than its intended purpose.

U.S. ARMY CORPS OF ENGINEERS DETROIT DISTRICT			
Submitted:	Surveyed By:	Plotted By:	Checked By:
Recommended:	Chief, Survey Section		
Approved:	Chief, Technical Services		

**River Rouge, MI**  
**Rouge River**  
**RR\_01\_ROU\_20220511\_CS**  
**11 May 2022**

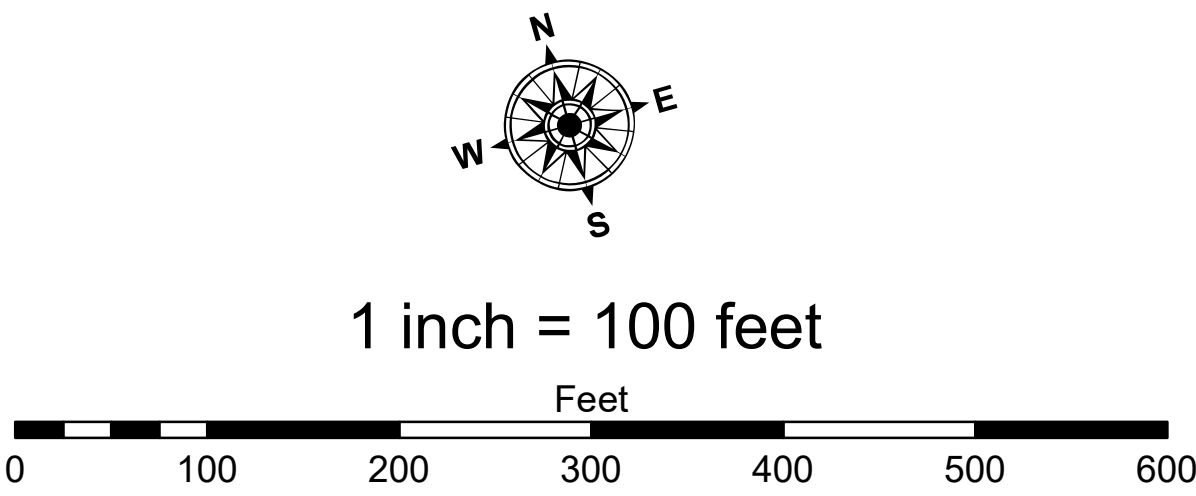
**Sheet Reference Number**  
**4 of 9**





- LEGEND**
- ..... Cable Submarine
  - - - Cable Overhead
  - Placement Area
  - ┆ Beacon, General
  - Contour Lines
  - ▭ Channel\_Limits

- SOUNDING LEGEND**
- LESS THAN PROJECT DEPTH
  - PROJECT DEPTH
  - PROJECT DEPTH +1'
  - PROJECT DEPTH +2'
  - PROJECT DEPTH +3'
  - PROJECT DEPTH +4'
  - PROJECT DEPTH +5'



**NOTES:** THE SOUNDINGS INDICATED HEREON ARE GENERALIZED DEPTHS AND ARE NOT REPRESENTATIVE OF THE FULL DATASET. THE SOUNDINGS REPRESENT THE MINIMUM DEPTH FOUND WITHIN THE 10 FOOT BY 10 FOOT AREA CENTERED ON THE TEXT. DERIVED FROM A 1 FOOT BY 1 FOOT AVERAGE DATASET AT CELL CENTER. THIS MAP SHOULD NOT BE USED FOR CHANNEL CLEARANCE OR VOLUME COMPUTATIONS. MINIMUM DEPTH DATA IS PRODUCED FOR STRIKE/SOAL REMOVAL OPERATIONS AND NOTICES TO NAVIGATION INTERESTS.

THE SOUNDINGS DEPICTED HEREIN ARE EXPRESSED IN U.S. SURVEY FEET AND TENTHS THEREOF AND ARE REFERENCED TO THE FOLLOWING DATUMS:

HORIZONTAL: MICHIGAN STATE PLANE COORDINATE SYSTEM, MICHIGAN SOUTH ZONE #2113, NORTH AMERICAN DATUM (NAD) OF 1983, U.S. SURVEY FEET

VERTICAL: INTERNATIONAL GREAT LAKES DATUM (IGLD) OF 1985. THE LOW WATER DATUM FOR THE ROUGE RIVER IS 571.2'.

PROJECT DEPTHS FOR THE ROUGE RIVER INCLUDE: 17', 18', 21' AND 25'

TIDE VALUES ARE DERIVED FROM THE NATIONAL OCEANIC AND ATMOSPHERIC ADMINISTRATION (NOAA) WATER LEVEL STATIONS:

FT WAYNE, MI (#9044036)  
TEMPORARY GAGE BOARD SET AT THE JEFFERSON AVE BRIDGE.

THE SURVEY WAS CONDUCTED USING THE U.S.A.C.E. SURVEY VESSEL(S) SB SKIFF EMPLOYING THE FOLLOWING COMPONENTS:  
POSITIONING: APPLANIX POS-M/V  
CORRECTIONS: VRS/RTK OR MARINESTAR GNSS  
SONAR: CV-300 (SINGLE-BEAM)  
SOFTWARE: HYPACK



DISCLAIMER: The data presented in this map is for informational purposes only. The data was collected using a variety of methods and is not guaranteed to be accurate. The user is responsible for the results of any application of the data for other than its intended purpose. The United States Government furnishes this data and the recipient accepts and uses them with the express understanding that the data is not to be used for any purpose other than that for which it was provided. The recipient may not transfer these data to others without also transferring the Disclaimer.

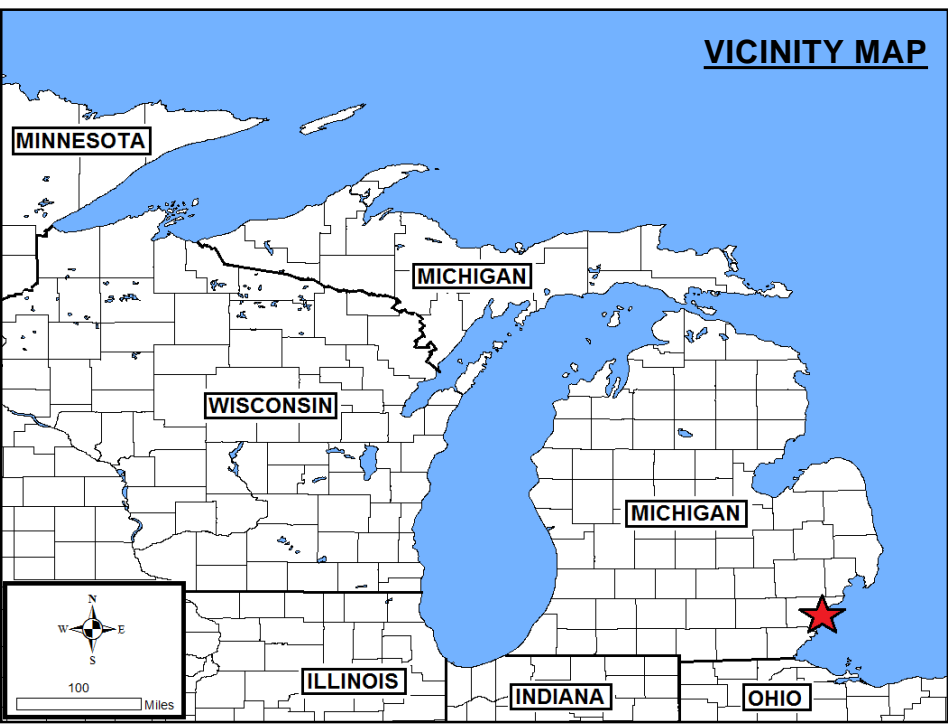
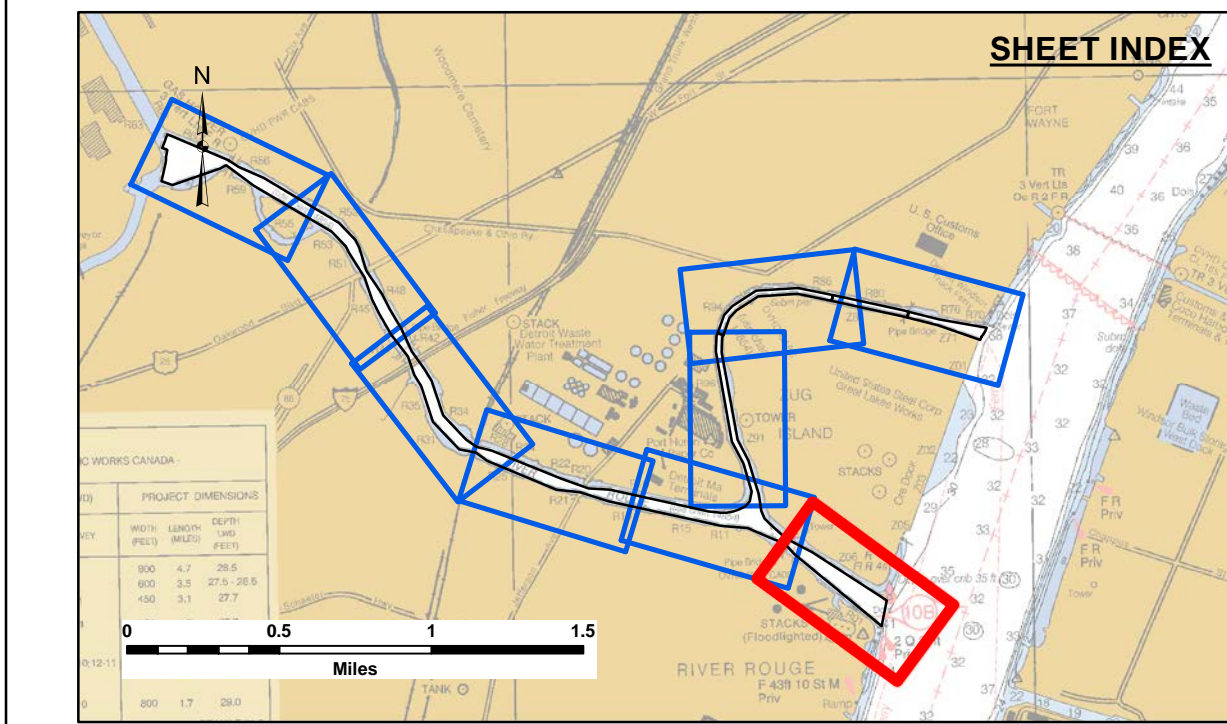
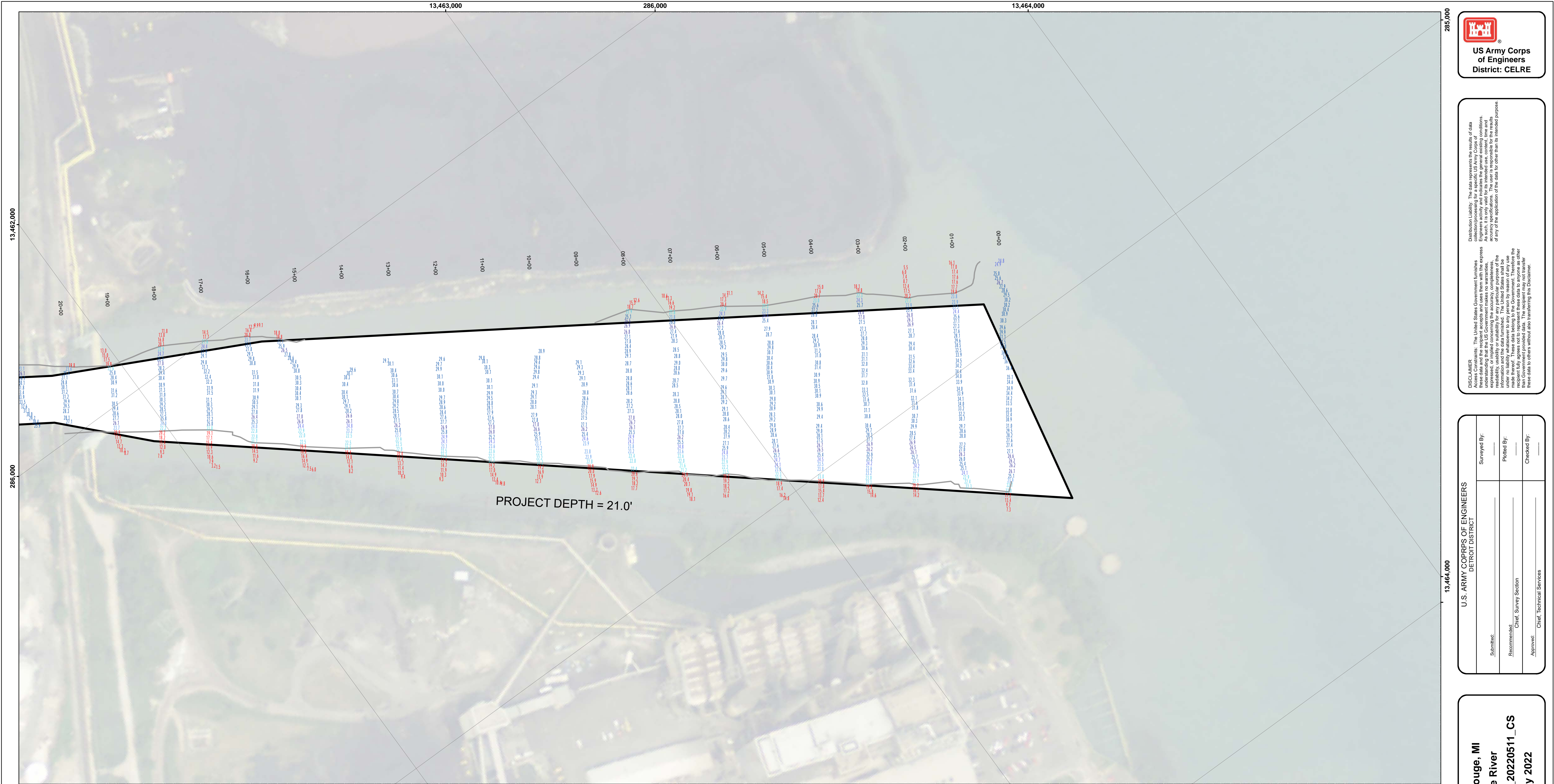
U.S. ARMY CORPS OF ENGINEERS DETROIT DISTRICT			
Submitted:	Surveyed By:	Plotted By:	Checked By:
Recommended:	Chief, Survey Section		
Approved:	Chief, Technical Services		

River Rouge, MI  
Rouge River  
RR\_01\_ROU\_20220511\_CS  
11 May 2022

Sheet  
Reference  
Number  
5 of 9

Revision Number:  
4.2-20200420





**LEGEND**

- ..... Cable Submarine
- - Cable Overhead
- Placement Area
- └ Beacon, General
- Contour Lines
- ▭ Channel\_Limits

**SOUNDING LEGEND**

- LESS THAN PROJECT DEPTH
- PROJECT DEPTH
- PROJECT DEPTH +1'
- PROJECT DEPTH +2'
- PROJECT DEPTH +3'
- PROJECT DEPTH +4'
- PROJECT DEPTH +5'

**Scale and Orientation**

1 inch = 100 feet

Feet

0 100 200 300 400 500 600

North Arrow

**NOTES:** THE SOUNDINGS INDICATED HEREON ARE GENERALIZED DEPTHS AND ARE NOT REPRESENTATIVE OF THE FULL DATASET. THE SOUNDINGS REPRESENT THE MINIMUM DEPTH FOUND WITHIN THE 10 FOOT BY 10 FOOT AREA CENTERED ON THE TEXT. DERIVED FROM A 1 FOOT BY 1 FOOT AVERAGE DATASET AT CELL CENTER. THIS MAP SHOULD NOT BE USED FOR CHANNEL CLEARANCE OR VOLUME COMPUTATIONS. MINIMUM DEPTH DATA IS PRODUCED FOR STRIKE/SOAL REMOVAL OPERATIONS AND NOTICES TO NAVIGATION INTERESTS.

THE SOUNDINGS DEPICTED HEREIN ARE EXPRESSED IN U.S. SURVEY FEET AND TENTHS THEREOF AND ARE REFERENCED TO THE FOLLOWING DATUMS:

HORIZONTAL: MICHIGAN STATE PLANE COORDINATE SYSTEM, MICHIGAN SOUTH ZONE #2113, NORTH AMERICAN DATUM (NAD) OF 1983, U.S. SURVEY FEET

VERTICAL: INTERNATIONAL GREAT LAKES DATUM (IGLD) OF 1985. THE LOW WATER DATUM FOR THE ROUGE RIVER IS 571.2'.

PROJECT DEPTHS FOR THE ROUGE RIVER INCLUDE: 17', 18', 21' AND 25'

TIDE VALUES ARE DERIVED FROM THE NATIONAL OCEANIC AND ATMOSPHERIC ADMINISTRATION (NOAA) WATER LEVEL STATIONS:

FT WAYNE, MI (#9044036)  
TEMPORARY GAGE BOARD SET AT THE JEFFERSON AVE BRIDGE.

THE SURVEY WAS CONDUCTED USING THE U.S.A.C.E. SURVEY VESSEL(S) SB SKIFF EMPLOYING THE FOLLOWING COMPONENTS:  
POSITIONING: APPLANIX POS-M/V  
CORRECTIONS: VRS/RTK OR MARINESTAR GNSS  
SONAR: CV-300 (SINGLE-BEAM)  
SOFTWARE: HYPACK

**River Rouge, MI**  
**Rouge River**  
**RR\_01\_ROU\_20220511\_CS**  
**11 May 2022**

**Sheet Reference Number**  
**6 of 9**

Revision Number:  
4.2-20200420

U.S. ARMY CORPS OF ENGINEERS DETROIT DISTRICT			
Submitted:	Surveyed By:		
Recommended:	Plotted By:		
Approved:	Checked By:		

**DISCLAIMER:** The data presented in this map is for informational purposes only. The data was collected by the U.S. Army Corps of Engineers and is not intended for use in any other manner. The user is responsible for the results of any application of the data for other than its intended purpose.

**WARRANTY:** The United States Government furnishes these data and the recipient accepts and uses them with the express understanding that the data are not intended for use in any other manner. The data are not intended for use in any other manner. The data are not intended for use in any other manner.

