

LEGEND

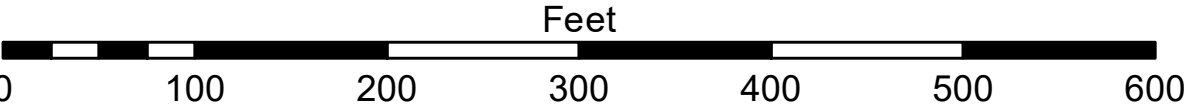
- Cable Submarine
- - Cable Overhead
- Placement Area
- ┆ Beacon, General
- Contour Lines
- ▭ Channel_Limits

SOUNDING LEGEND

- LESS THAN PROJECT DEPTH
- PROJECT DEPTH
- PROJECT DEPTH +1'
- PROJECT DEPTH +2'
- PROJECT DEPTH +3'
- PROJECT DEPTH +4'
- PROJECT DEPTH +5'



1 inch = 100 feet



NOTES:

THE SOUNDINGS INDICATED HEREON ARE GENERALIZED DEPTHS AND ARE NOT REPRESENTATIVE OF THE FULL DATASET. THE SOUNDINGS REPRESENT THE MINIMUM DEPTH FOUND WITHIN THE 10 FOOT BY 10 FOOT AREA CENTERED ON THE TEXT, DERIVED FROM A 1 FOOT BY 1 FOOT AVERAGE DATASET AT CELL CENTER. THIS MAP SHOULD NOT BE USED FOR CHANNEL CLEARANCE OR VOLUME COMPUTATIONS. MINIMUM DEPTH DATA IS PRODUCED FOR STRIKE/SOAL REMOVAL OPERATIONS AND NOTICES TO NAVIGATION INTERESTS.

THE SOUNDINGS DEPICTED HEREIN ARE EXPRESSED IN U.S. SURVEY FEET AND TENTHS THEREOF AND ARE REFERENCED TO THE FOLLOWING DATUMS:

HORIZONTAL: MICHIGAN STATE PLANE COORDINATE SYSTEM, MICHIGAN SOUTH ZONE #2113, NORTH AMERICAN DATUM (NAD) OF 1983, U.S. SURVEY FEET

VERTICAL: INTERNATIONAL GREAT LAKES DATUM (IGLD) OF 1985. THE LOW WATER DATUM FOR THE ROUGE RIVER IS 571.2'.

PROJECT DEPTHS FOR THE ROUGE RIVER INCLUDE: 17', 18', 21' AND 25'

TOP OF 5 FOOT GAGE BOARD LOCATED AT THE JEFFERSON AVE BRIDGE WAS USED TO DETERMINE THE WATER LEVEL.

THE SURVEY WAS CONDUCTED USING THE U.S.A.C.E. SURVEY VESSEL WHEELER, EMPLOYING THE FOLLOWING COMPONENTS:

POSITIONING: APPLANIX POS-M/V
CORRECTIONS: VRSRTK OR MARINESTAR GNSS
SONAR: R2SONIC 2024 MULTIBEAM
SOFTWARE: HYPACK


**US Army Corps
of Engineers**
District: CELRE

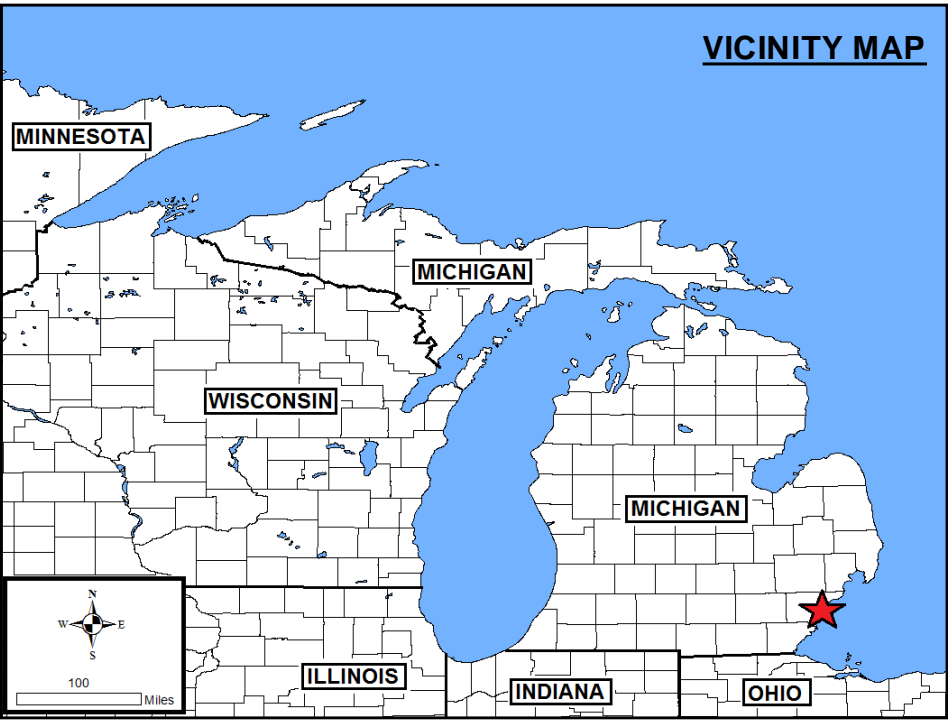
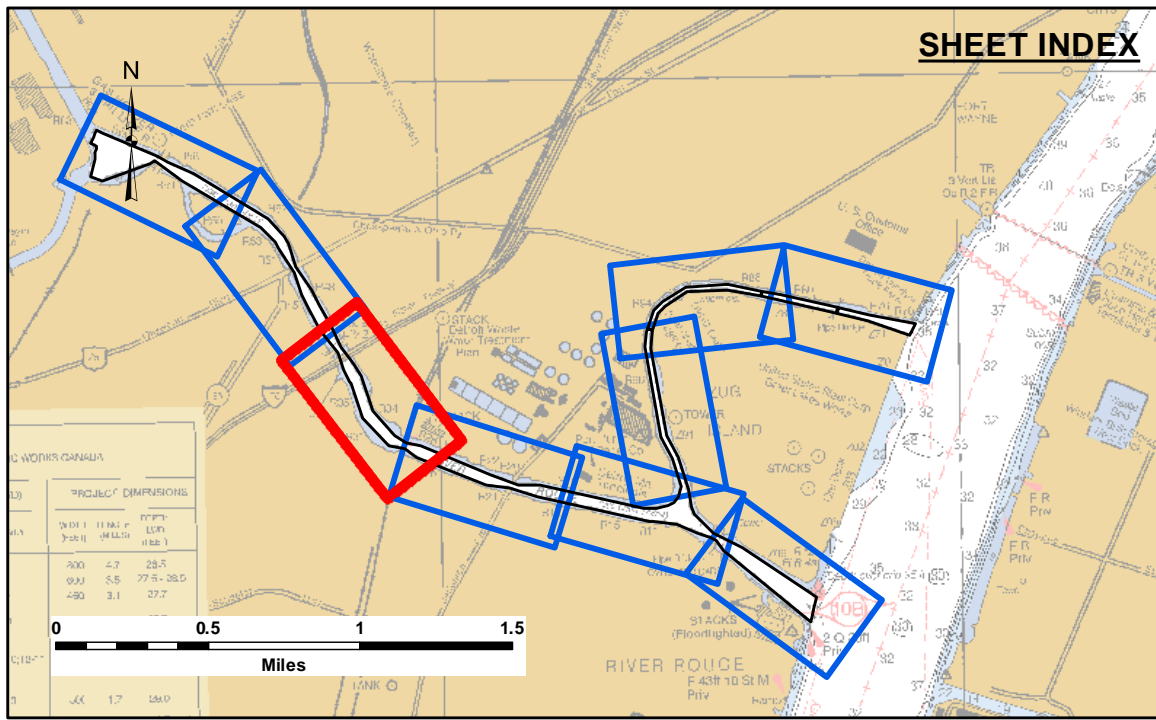
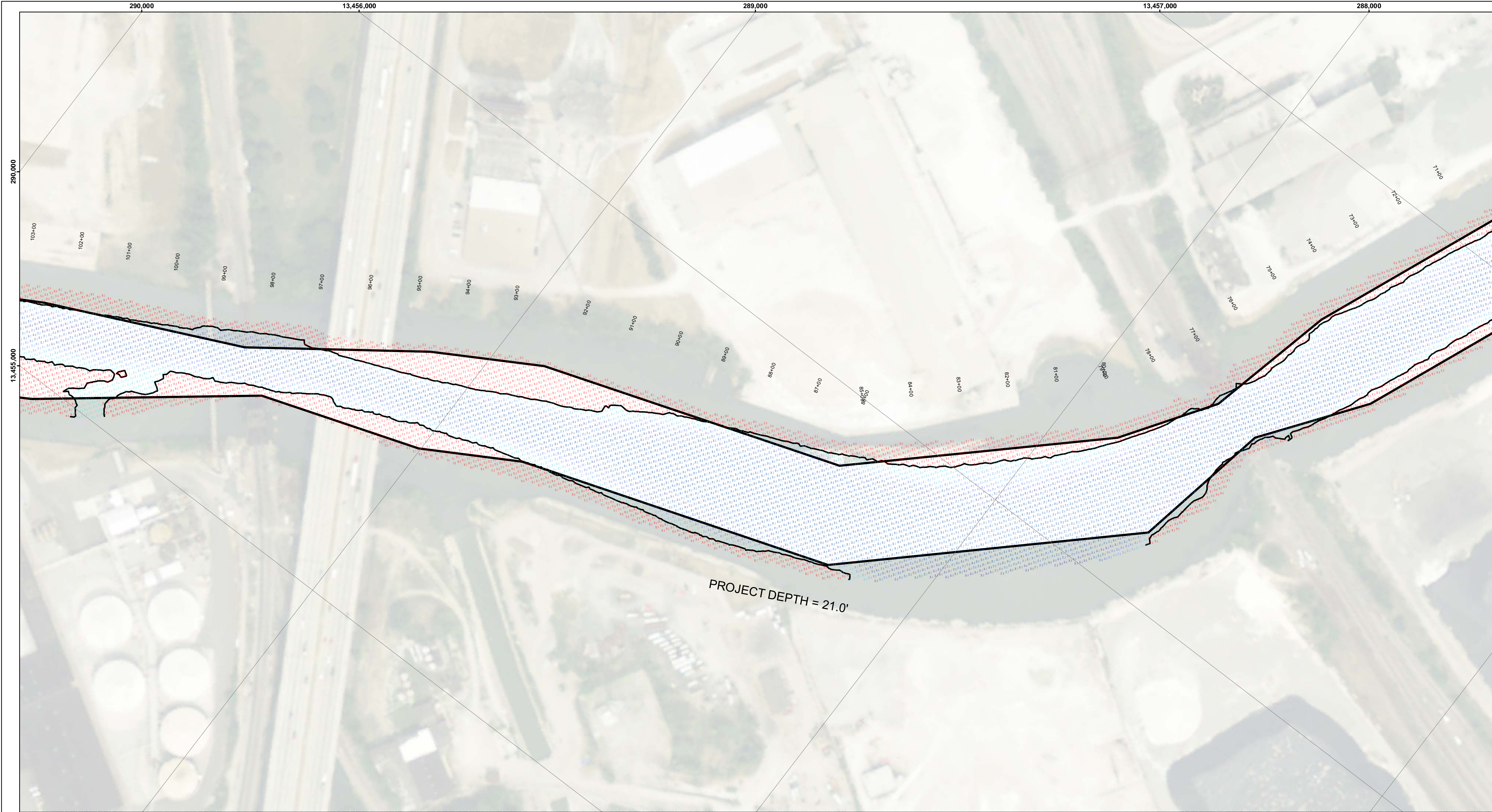
DISCLAIMER: The data represents the results of data collection and is not a guarantee of accuracy. The U.S. Army Corps of Engineers actively and continuously monitors the data for accuracy and updates it as needed. The user is responsible for the results of any of the application of the data for other than its intended purpose.

DISCLAIMER: The United States Government furnishes these data and the recipient accepts and uses them with the express understanding that the data are not a guarantee of accuracy, completeness, or implied concerning the accuracy, completeness, readability, usability or suitability for any particular purpose of the recipient. The data are provided for informational purposes only and are not to be used for any purpose other than that for which they were made. These data are not to be used for any purpose other than that for which they were made. These data are not to be used for any purpose other than that for which they were made.

U.S. ARMY CORPS OF ENGINEERS DETROIT DISTRICT	
Submitted: _____	Surveyed By: _____
Recommended: _____	Plotted By: _____
Approved: _____	Checked By: _____

River Rouge, MI
Rouge River
RR_01_ROU_20200722_CS
22 July 2020

**Sheet
Reference
Number**
2 of 9



LEGEND

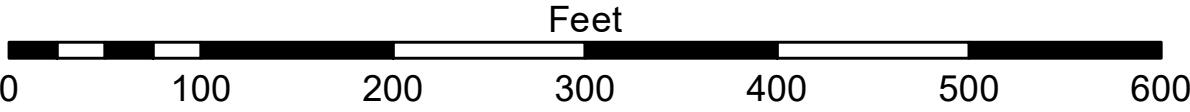
- Cable Submarine
- - Cable Overhead
- Placement Area
- └ Beacon, General
- Contour Lines
- ▭ Channel_Limits

SOUNDING LEGEND

- LESS THAN PROJECT DEPTH
- PROJECT DEPTH
- PROJECT DEPTH +1'
- PROJECT DEPTH +2'
- PROJECT DEPTH +3'
- PROJECT DEPTH +4'
- PROJECT DEPTH +5'



1 inch = 100 feet



NOTES:

THE SOUNDINGS INDICATED HEREON ARE GENERALIZED DEPTHS AND ARE NOT REPRESENTATIVE OF THE FULL DATASET. THE SOUNDINGS REPRESENT THE MINIMUM DEPTH FOUND WITHIN THE 10 FOOT BY 10 FOOT AREA CENTERED ON THE TEXT, DERIVED FROM A 1 FOOT BY 1 FOOT AVERAGE DATASET AT CELL CENTER. THIS MAP SHOULD NOT BE USED FOR CHANNEL CLEARANCE OR VOLUME COMPUTATIONS. MINIMUM DEPTH DATA IS PRODUCED FOR STRIKE/SOAL REMOVAL OPERATIONS AND NOTICES TO NAVIGATION INTERESTS.

THE SOUNDINGS DEPICTED HEREIN ARE EXPRESSED IN U.S. SURVEY FEET AND TENTHS THEREOF AND ARE REFERENCED TO THE FOLLOWING DATUMS:

HORIZONTAL: MICHIGAN STATE PLANE COORDINATE SYSTEM, MICHIGAN SOUTH ZONE #2113, NORTH AMERICAN DATUM (NAD) OF 1983, U.S. SURVEY FEET

VERTICAL: INTERNATIONAL GREAT LAKES DATUM (IGLD) OF 1985. THE LOW WATER DATUM FOR THE ROUGE RIVER IS 571.2'.

PROJECT DEPTHS FOR THE ROUGE RIVER INCLUDE: 17', 18', 21' AND 25'

TOP OF 5 FOOT GAGE BOARD LOCATED AT THE JEFFERSON AVE BRIDGE WAS USED TO DETERMINE THE WATER LEVEL.

THE SURVEY WAS CONDUCTED USING THE U.S.A.C.E. SURVEY VESSEL WHEELER, EMPLOYING THE FOLLOWING COMPONENTS:

POSITIONING: APPLANIX POS-M/V
CORRECTIONS: VRSRTK OR MARINESTAR GNSS
SONAR: R2SONIC 2024 MULTIBEAM
SOFTWARE: HYPACK


**US Army Corps
of Engineers**
District: CELRE

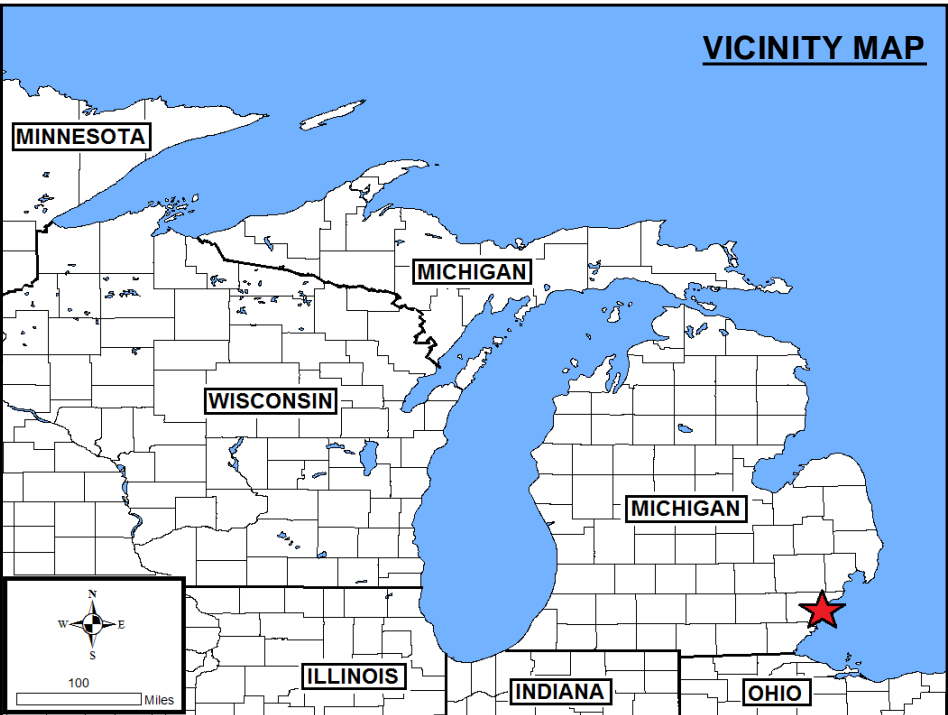
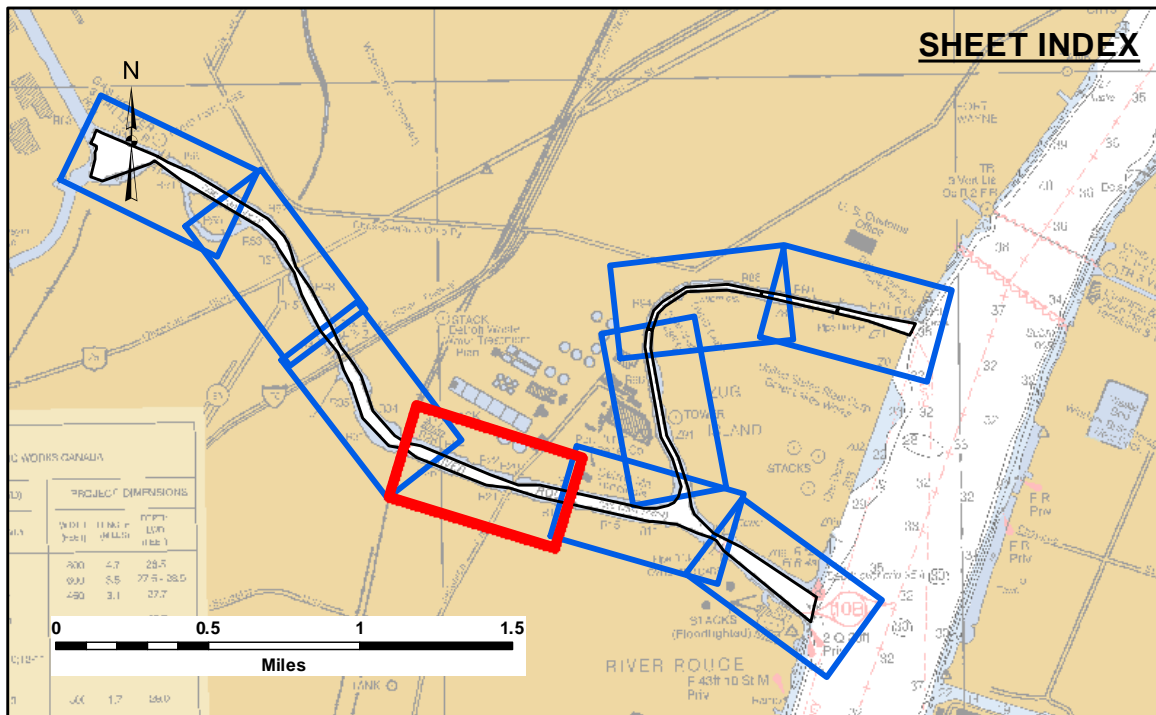
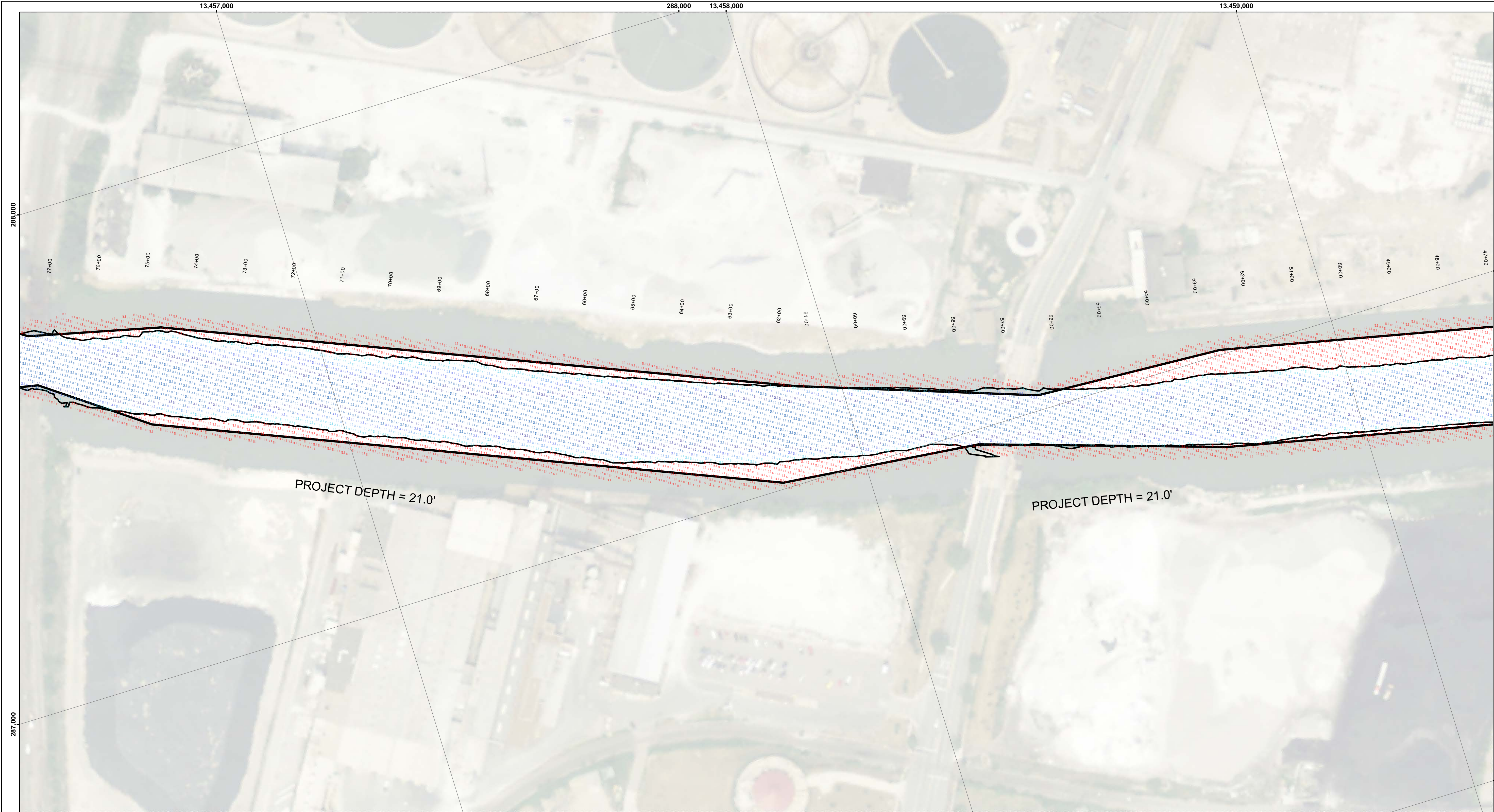
DISCLAIMER: The data presented in this report is the result of data collection and processing for a specific project. The U.S. Army Corps of Engineers actively and continuously monitors the general existing conditions of the project area. The data presented in this report is not intended to be used for any purpose other than that for which it was collected. The user is responsible for the results of any application of the data for other than its intended purpose.

ACCESS AGREEMENT: The United States Government furnishes these data and the recipient accepts and uses them with the express understanding that the data are not to be distributed, reproduced, or used in any manner that would imply endorsement, approval, or implied concern for the accuracy, completeness, or reliability of the data for any particular purpose of the recipient. The recipient agrees to indemnify the United States Government from and against all claims, damages, losses, and expenses, including reasonable attorneys' fees, incurred by the United States Government as a result of the use of the data by the recipient for any purpose other than that for which the data were furnished. These data belong to the Government. The recipient may not transfer these data to others without also transferring this Disclaimer.

U.S. ARMY CORPS OF ENGINEERS DETROIT DISTRICT		
Submitted:	Surveyed By:	
Recommended:	Plotted By:	
Approved:	Chief, Survey Section	
	Chief, Technical Services	

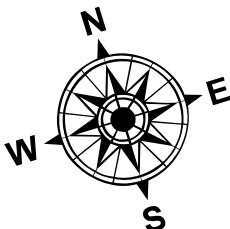
River Rouge, MI
Rouge River
RR_01_ROU_20200722_CS
22 July 2020

**Sheet
Reference
Number**
3 of 9

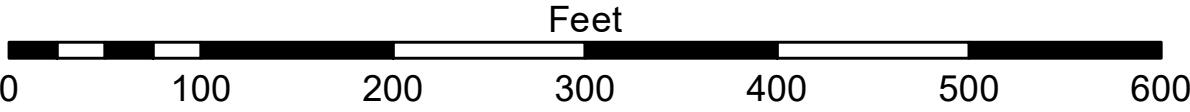


- LEGEND**
- Cable Submarine
 - - Cable Overhead
 - Placement Area
 - └ Beacon, General
 - Contour Lines
 - ▭ Channel_Limits

- SOUNDING LEGEND**
- LESS THAN PROJECT DEPTH
 - PROJECT DEPTH
 - PROJECT DEPTH +1'
 - PROJECT DEPTH +2'
 - PROJECT DEPTH +3'
 - PROJECT DEPTH +4'
 - PROJECT DEPTH +5'



1 inch = 100 feet



NOTES:

THE SOUNDINGS INDICATED HEREON ARE GENERALIZED DEPTHS AND ARE NOT REPRESENTATIVE OF THE FULL DATASET. THE SOUNDINGS REPRESENT THE MINIMUM DEPTH FOUND WITHIN THE 10 FOOT BY 10 FOOT AREA CENTERED ON THE TEXT, DERIVED FROM A 1 FOOT BY 1 FOOT AVERAGE DATASET AT CELL CENTER. THIS MAP SHOULD NOT BE USED FOR CHANNEL CLEARANCE OR VOLUME COMPUTATIONS. MINIMUM DEPTH DATA IS PRODUCED FOR STRIKE/SOAL REMOVAL OPERATIONS AND NOTICES TO NAVIGATION INTERESTS.

THE SOUNDINGS DEPICTED HEREIN ARE EXPRESSED IN U.S. SURVEY FEET AND TENTHS THEREOF AND ARE REFERENCED TO THE FOLLOWING DATUMS:

HORIZONTAL: MICHIGAN STATE PLANE COORDINATE SYSTEM, MICHIGAN SOUTH ZONE #2113, NORTH AMERICAN DATUM (NAD) OF 1983, U.S. SURVEY FEET

VERTICAL: INTERNATIONAL GREAT LAKES DATUM (IGLD) OF 1985. THE LOW WATER DATUM FOR THE ROUGE RIVER IS 571.2'.

PROJECT DEPTHS FOR THE ROUGE RIVER INCLUDE: 17', 18', 21' AND 25'

TOP OF 5 FOOT GAGE BOARD LOCATED AT THE JEFFERSON AVE BRIDGE WAS USED TO DETERMINE THE WATER LEVEL.

THE SURVEY WAS CONDUCTED USING THE U.S.A.C.E. SURVEY VESSEL WHEELER, EMPLOYING THE FOLLOWING COMPONENTS:

POSITIONING: APPLANIX POS-M/V
CORRECTIONS: VRSRTK OR MARINESTAR GNSS
SONAR: R2SONIC 2024 MULTIBEAM
SOFTWARE: HYPACK



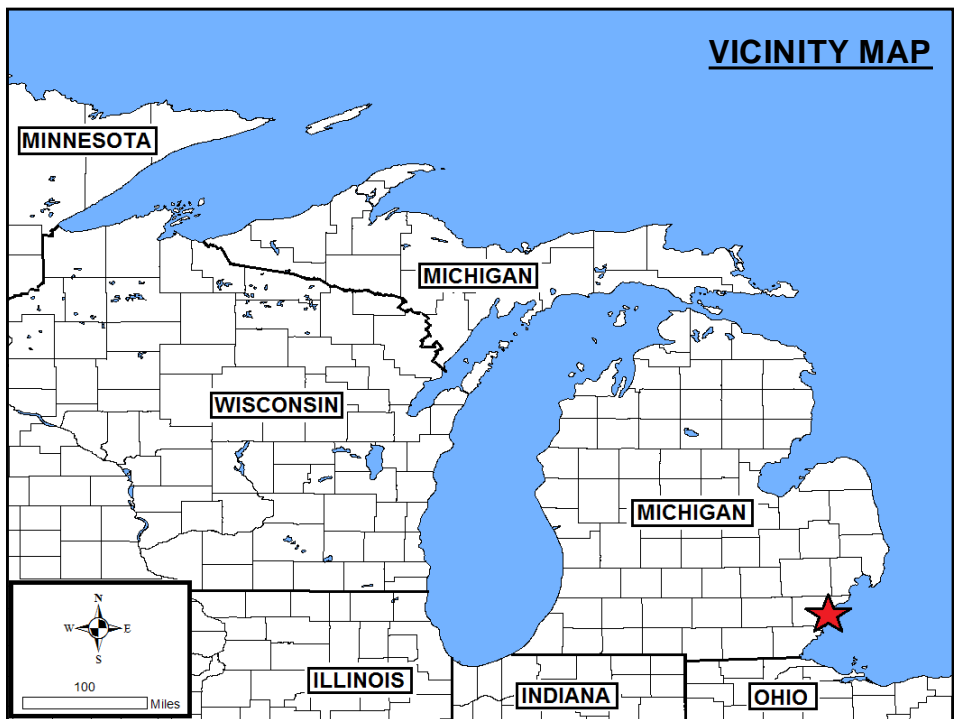
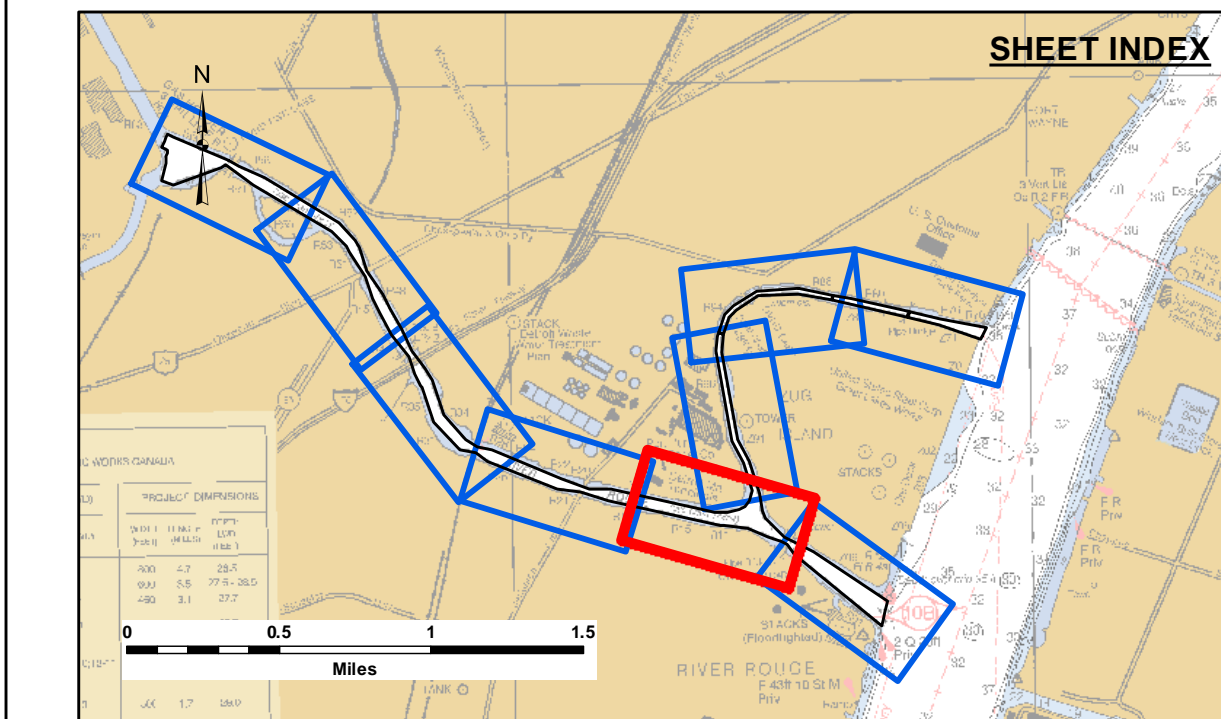
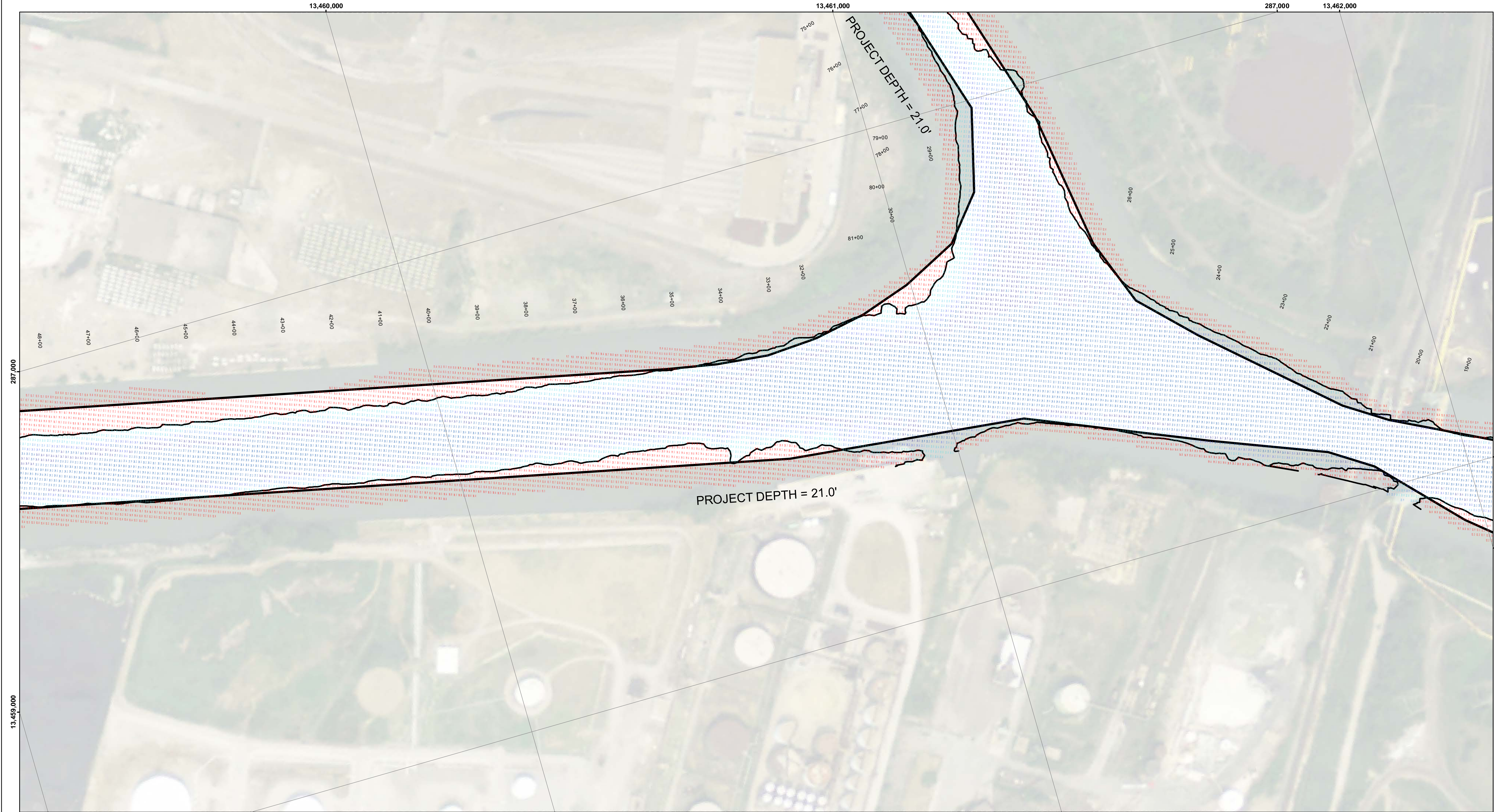
DISCLAIMER: The data represents the results of data collection activities for a specific US Army Corps of Engineers activity and indicates the general existing conditions. The data is not intended to be used for any purpose other than the intended purpose. The user is responsible for the results of any of the application of the data for other than its intended purpose.

ACCESS CONSTRAINTS: The United States Government furnishes these data and the recipient accepts and uses them with the express understanding that the data are not to be used for any purpose other than the intended purpose. The data are not to be used for any purpose other than the intended purpose. The data are not to be used for any purpose other than the intended purpose.

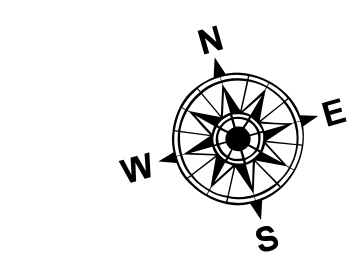
U.S. ARMY CORPS OF ENGINEERS DETROIT DISTRICT		
Submitted:	Surveyed By:	
Recommended:	Plotted By:	
Approved:	Chief, Survey Section	
	Chief, Technical Services	

River Rouge, MI
Rouge River
RR_01_ROU_20200722_CS
22 July 2020

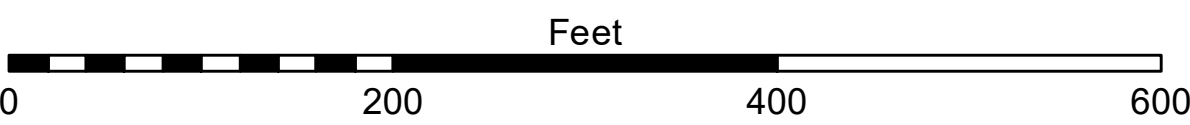
Sheet
Reference
Number
4 of 9



- LEGEND**
- Federal Navigation Channel
 - Federal Navigation Center Line
 - Cable Submarine
 - - Cable Overhead
 - Contour Line
 - Placement Area
 - Shoaling Area
 - Shoalest Sounding**
 - ⚓ Beacon, General
 - ◆ Red Navigation Buoy
 - ◇ Green Navigation Buoy



1 inch = 100 feet



NOTES:

PROJECT DEPTHS FOR THE ROUGE RIVER INCLUDE: 17', 18', 21' AND 25'

THE SOUNDINGS INDICATED HEREON ARE GENERALIZED DEPTHS AND ARE NOT REPRESENTATIVE OF THE FULL DATASET. THE SOUNDINGS REPRESENT THE MINIMUM DEPTH FOUND WITHIN THE 10 FOOT BY 10 FOOT AREA CENTERED ON THE TEXT, DERIVED FROM A 1 FOOT BY 1 FOOT AVERAGE DATASET AT CELL CENTER. THIS MAP SHOULD NOT BE USED FOR CHANNEL CLEARANCE OR VOLUME COMPUTATIONS. MINIMUM DEPTH DATA IS PROVIDED FOR STRIKE/SOAL REMOVAL OPERATIONS AND NOTICES TO NAVIGATION INTERESTS.

THE SOUNDINGS DEPICTED HEREIN ARE EXPRESSED IN U.S. SURVEY FEET AND TENTHS THEREOF AND ARE REFERENCED TO THE FOLLOWING DATUMS:

HORIZONTAL: MICHIGAN STATE PLANE COORDINATE SYSTEM, MICHIGAN SOUTH ZONE #2113, NORTH AMERICAN DATUM (NAD) OF 1983, U.S. SURVEY FEET

VERTICAL: INTERNATIONAL GREAT LAKES DATUM (IGLD) OF 1985, THE LOW WATER DATUM FOR THE ROUGE RIVER IS 571.2'.

TOP OF 5 FOOT GAGE BOARD LOCATED AT THE JEFFERSON AVE BRIDGE WAS USED TO DETERMINE THE WATER LEVEL.

THE SURVEY WAS CONDUCTED USING THE U.S.A.C.E. SURVEY VESSEL WHEELER, EMPLOYING THE FOLLOWING COMPONENTS:

POSITIONING: APPLANIX POS-M/V
CORRECTIONS: VRS/RTK OR MARINESTAR GPS/VBS
SONAR: R2SONIC 2024 MULTIBEAM
SOFTWARE: HYPACK



DISCLAIMER: The data represents the results of data collection and processing for a specific US Army Corps of Engineers activity and indicates the general existing conditions. The user is responsible for the accuracy, completeness, and reliability of the data for the intended purpose of any of the application of the data for other than its intended purpose.

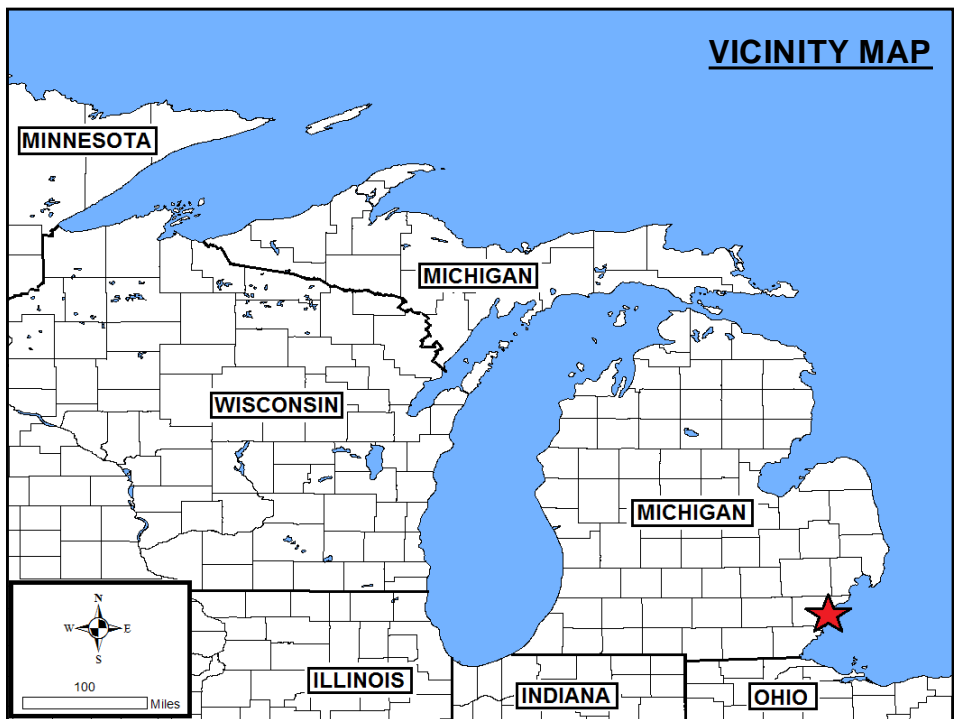
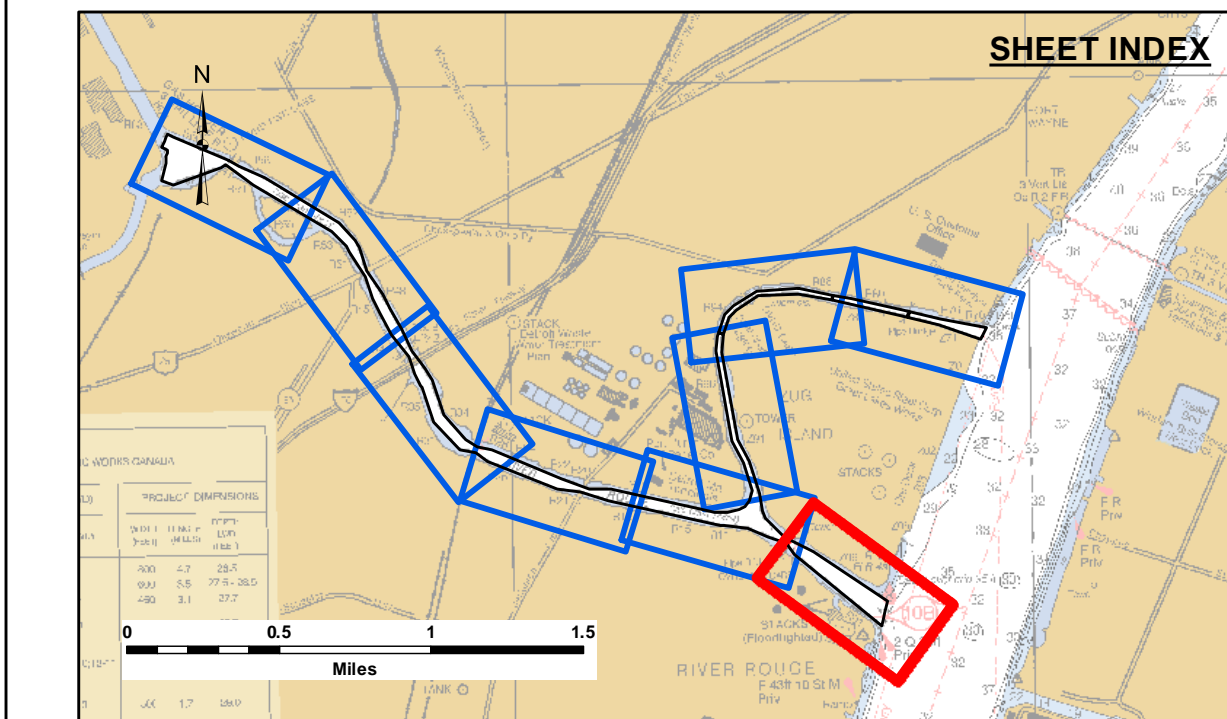
DISCLAIMER: The United States Government furnishes these data and the recipient accepts and uses them with the express understanding that the data are not to be used for any purpose other than that for which they were provided. The user is responsible for the accuracy, completeness, and reliability of the data for the intended purpose of any of the application of the data for other than its intended purpose.

DISCLAIMER: These data are not to be used for any purpose other than that for which they were provided. The user is responsible for the accuracy, completeness, and reliability of the data for the intended purpose of any of the application of the data for other than its intended purpose.

Submitted:	Surveyed By:
Recommended:	Plotted By:
Approved:	Checked By:

River Rouge, MI
Rouge River
RR_01_ROU_20200416_CS
16 April 2020

Sheet
Reference
Number
5 of 9



LEGEND

- Federal Navigation Channel
- Federal Navigation Center Line
- Cable Submarine
- - Cable Overhead
- Contour Line
- Placement Area
- Shoaling Area
- Shoalest Sounding**
- ⚓ Beacon, General
- ◆ Red Navigation Buoy
- ◇ Green Navigation Buoy

NOTES:

PROJECT DEPTHS FOR THE ROUGE RIVER INCLUDE: 17', 18', 21' AND 25'

THE SOUNDINGS INDICATED HEREON ARE GENERALIZED DEPTHS AND ARE NOT REPRESENTATIVE OF THE FULL DATASET. THE SOUNDINGS REPRESENT THE MINIMUM DEPTH FOUND WITHIN THE 10 FOOT BY 10 FOOT AREA CENTERED ON THE TEXT, DERIVED FROM A 1 FOOT BY 1 FOOT AVERAGE DATASET AT CELL CENTER. THIS MAP SHOULD NOT BE USED FOR CHANNEL CLEARANCE OR VOLUME COMPUTATIONS. MINIMUM DEPTH DATA IS PRODUCED FOR STRIKE/SOAL REMOVAL OPERATIONS AND NOTICES TO NAVIGATION INTERESTS.

THE SOUNDINGS DEPICTED HEREIN ARE EXPRESSED IN U.S. SURVEY FEET AND TENTHS THEREOF AND ARE REFERENCED TO THE FOLLOWING DATUMS:

HORIZONTAL: MICHIGAN STATE PLANE COORDINATE SYSTEM, MICHIGAN SOUTH ZONE #2113, NORTH AMERICAN DATUM (NAD) OF 1983, U.S. SURVEY FEET

VERTICAL: INTERNATIONAL GREAT LAKES DATUM (IGLD) OF 1985. THE LOW WATER DATUM FOR THE ROUGE RIVER IS 571.2'.

TOP OF 5 FOOT GAGE BOARD LOCATED AT THE JEFFERSON AVE BRIDGE WAS USED TO DETERMINE THE WATER LEVEL.

THE SURVEY WAS CONDUCTED USING THE U.S.A.C.E. SURVEY VESSEL WHEELER, EMPLOYING THE FOLLOWING COMPONENTS:

POSITIONING: APPLANIX POS-M/V
CORRECTIONS: VRS/RTK OR MARINESTAR GPS/VBS
SONAR: RZSONIC 2024 MULTIBEAM
SOFTWARE: HYPACK

1 inch = 100 feet

0 200 400 600 Feet


**US Army Corps
of Engineers**
District: CELRE

DISCLAIMER

The data presented in this map is the result of data collection and processing for a specific purpose. The U.S. Army Corps of Engineers activity and indicates the general existing conditions. The data is not intended to be used for any other purpose. The user is responsible for the results of any application of the data for other than its intended purpose.

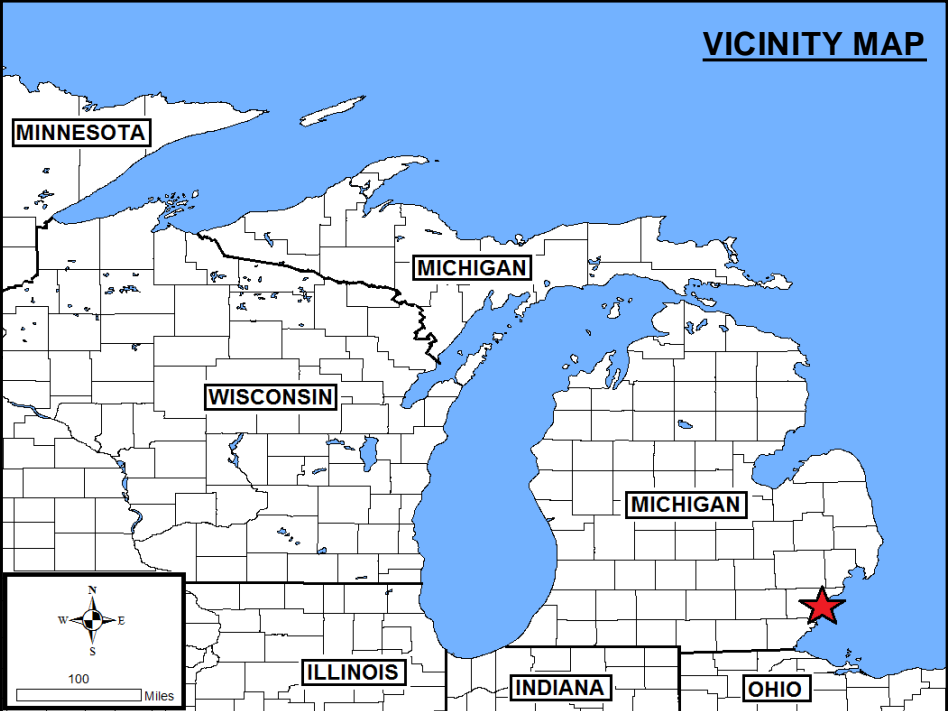
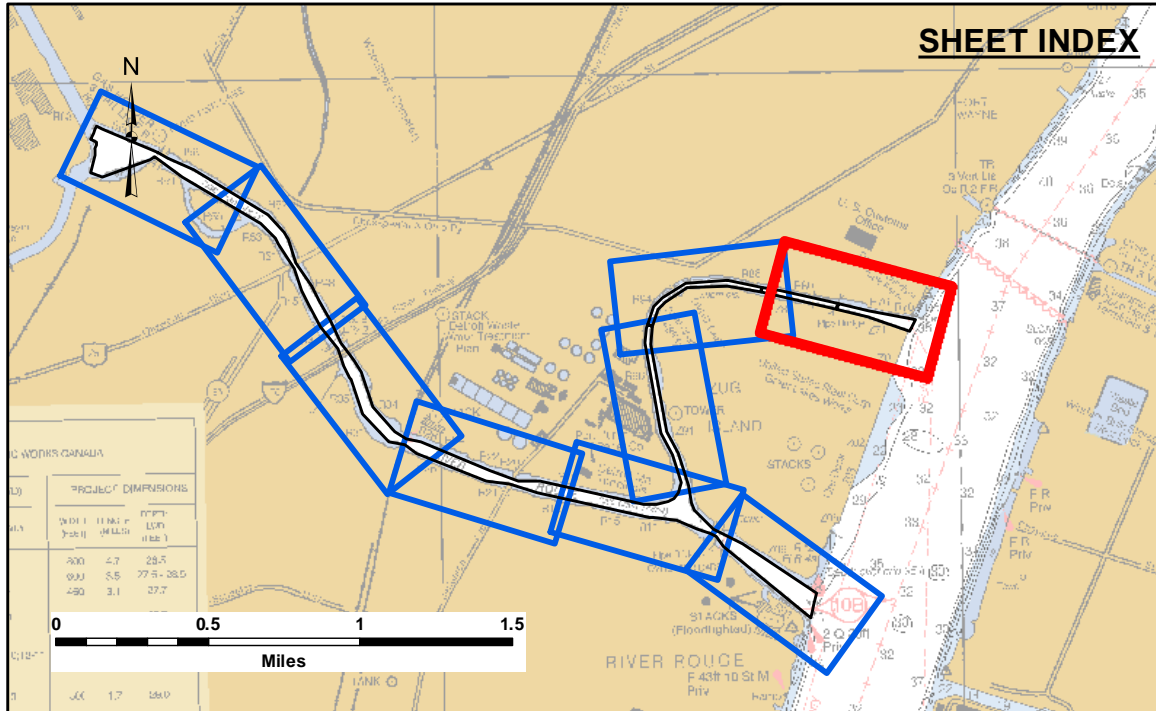
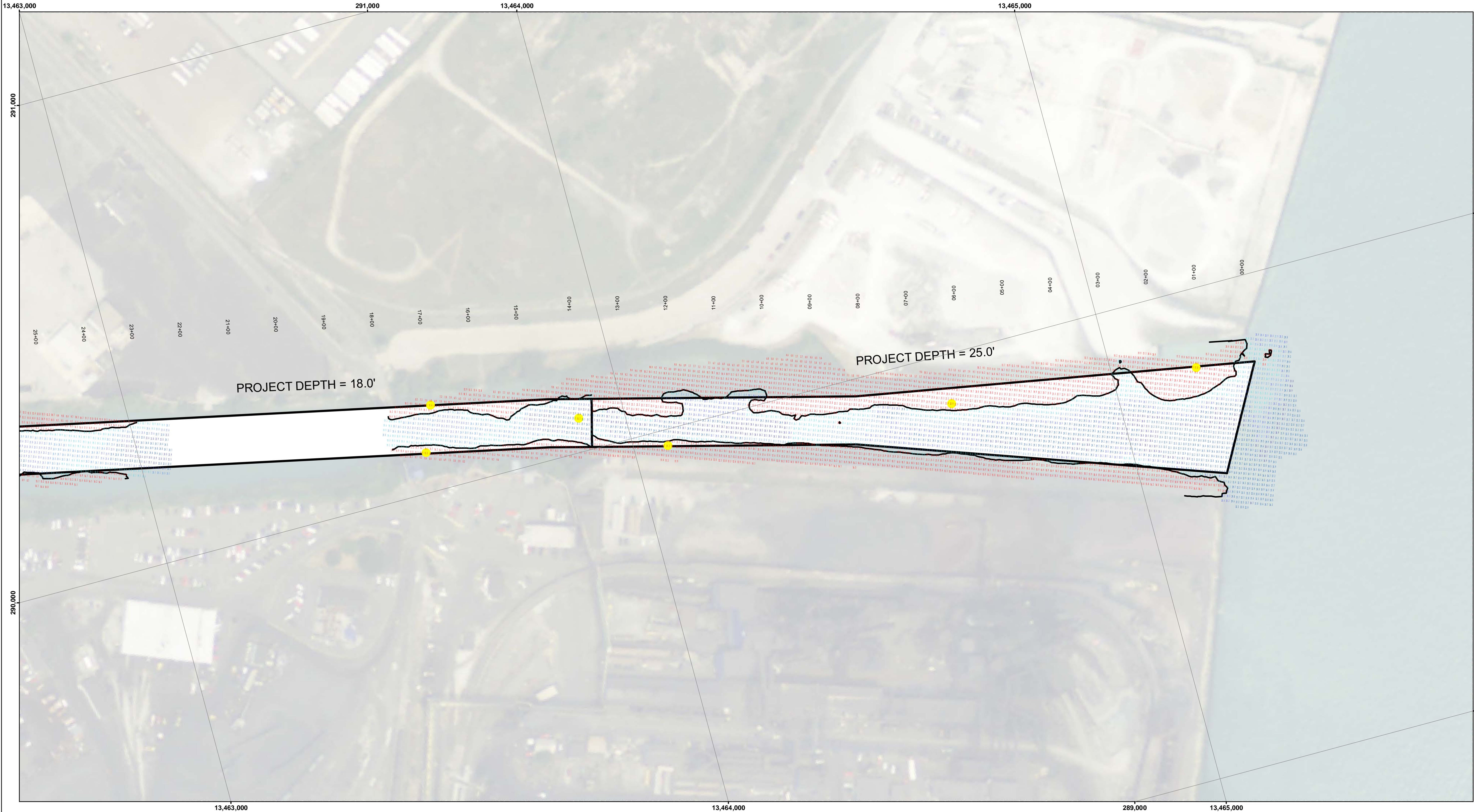
ACCESS CONDITIONS

The United States Government furnishes these data and the recipient accepts and uses them with the express understanding that the data are not to be used for any other purpose, expressed or implied, concerning the accuracy, completeness, readability, usability or suitability for any particular purpose of the recipient. The data are provided "as is" without warranty, express or implied, under no liability whatsoever to any person by reason of any use made thereof. These data belong to the Government. Hereby the recipient agrees to return the data to the Government upon request and to not transfer the data to others without also transferring this Disclaimer.

U.S. ARMY CORPS OF ENGINEERS DETROIT DISTRICT	Submitted:	Surveyed By:
	Recommended:	Plotted By:
	Approved:	Checked By:

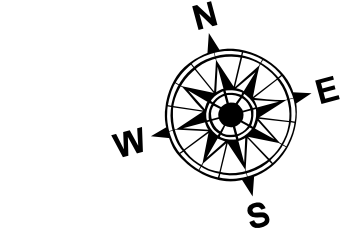
River Rouge, MI
Rouge River
RR_01_ROU_20200416_CS
16 April 2020

**Sheet
Reference
Number**
6 of 9

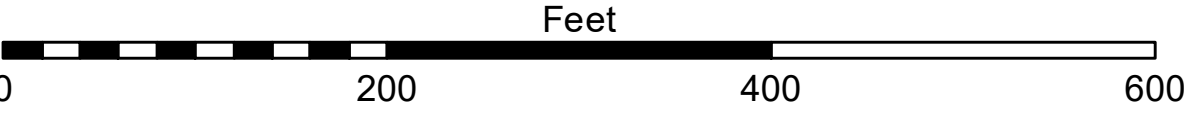


- LEGEND**

 - Federal Navigation Channel
 - Federal Navigation Center Line
 - Cable Submarine
 - Cable Overhead
 - Contour Line
 - Placement Area
 - Shoaling Area
 - Shoalest Sounding**
 - Beacon, General
 - Red Navigation Buoy
 - Green Navigation Buoy



1 inch = 100 feet



NOTES:

PROJECT DEPTHS FOR THE ROUGE RIVER INCLUDE: 17', 18', 21' AND 25'

THE SOUNDINGS INDICATED HEREON ARE GENERALIZED DEPTHS AND ARE NOT REPRESENTATIVE OF THE FULL DATASET. THE SOUNDINGS REPRESENT THE MINIMUM DEPTH FOUND WITHIN THE 10 FOOT BY 10 FOOT AREA CENTERED ON THE TEXT, DERIVED FROM A 1 FOOT BY 1 FOOT AVERAGE DATASET AT CELL CENTER. THIS MAP SHOULD NOT BE USED FOR CHANNEL CLEARANCE OR VOLUME COMPUTATIONS. MINIMUM DEPTH DATA IS PRODUCED FOR STRIKE/SOAL REMOVAL OPERATIONS AND NOTICES TO NAVIGATION INTERESTS.

THE SOUNDINGS DEPICTED HEREIN ARE EXPRESSED IN U.S. SURVEY FEET AND TENTHS THEREOF AND ARE REFERENCED TO THE FOLLOWING DATUMS:

HORIZONTAL: MICHIGAN STATE PLANE COORDINATE SYSTEM, MICHIGAN SOUTH ZONE #2113, NORTH AMERICAN DATUM (NAD) OF 1983, U.S. SURVEY FEET

VERTICAL: INTERNATIONAL GREAT LAKES DATUM (IGLD) OF 1985. THE LOW WATER DATUM FOR THE ROUGE RIVER IS 571.2'.

TOP OF 5 FOOT GAGE BOARD LOCATED AT THE JEFFERSON AVE BRIDGE WAS USED TO DETERMINE THE WATER LEVEL.

THE SURVEY WAS CONDUCTED USING THE U.S.A.C.E. SURVEY VESSEL WHEELER, EMPLOYING THE FOLLOWING COMPONENTS:

POSITIONING: APPLANIX POS-M/V
CORRECTIONS: VRS/RTK OR MARINESTAR GPS/VBS
SONAR: R2SONIC 2024 MULTIBEAM
SOFTWARE: HYPACK

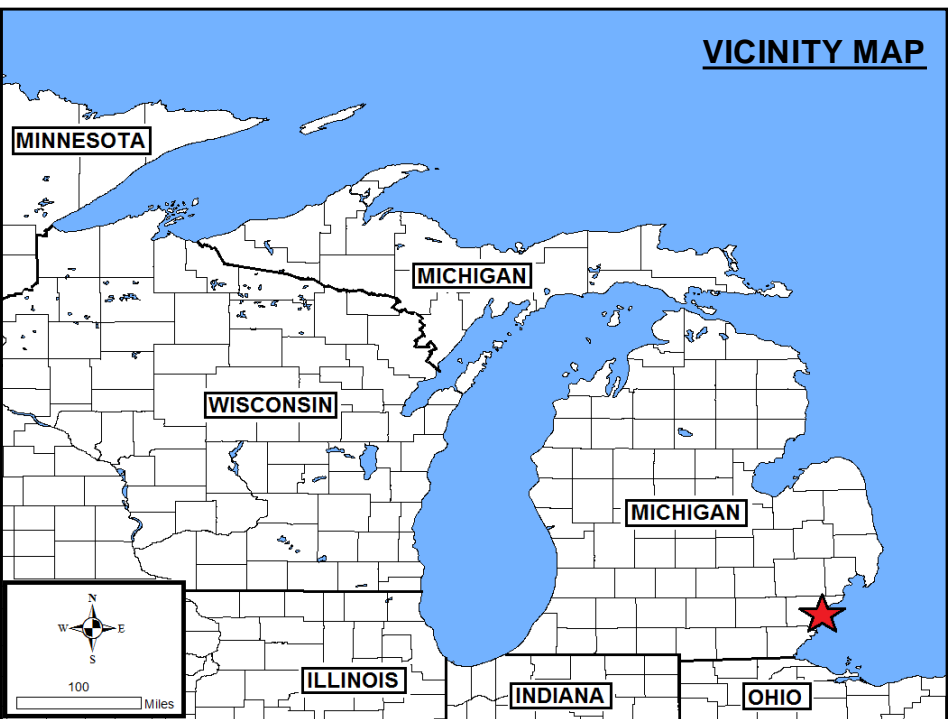
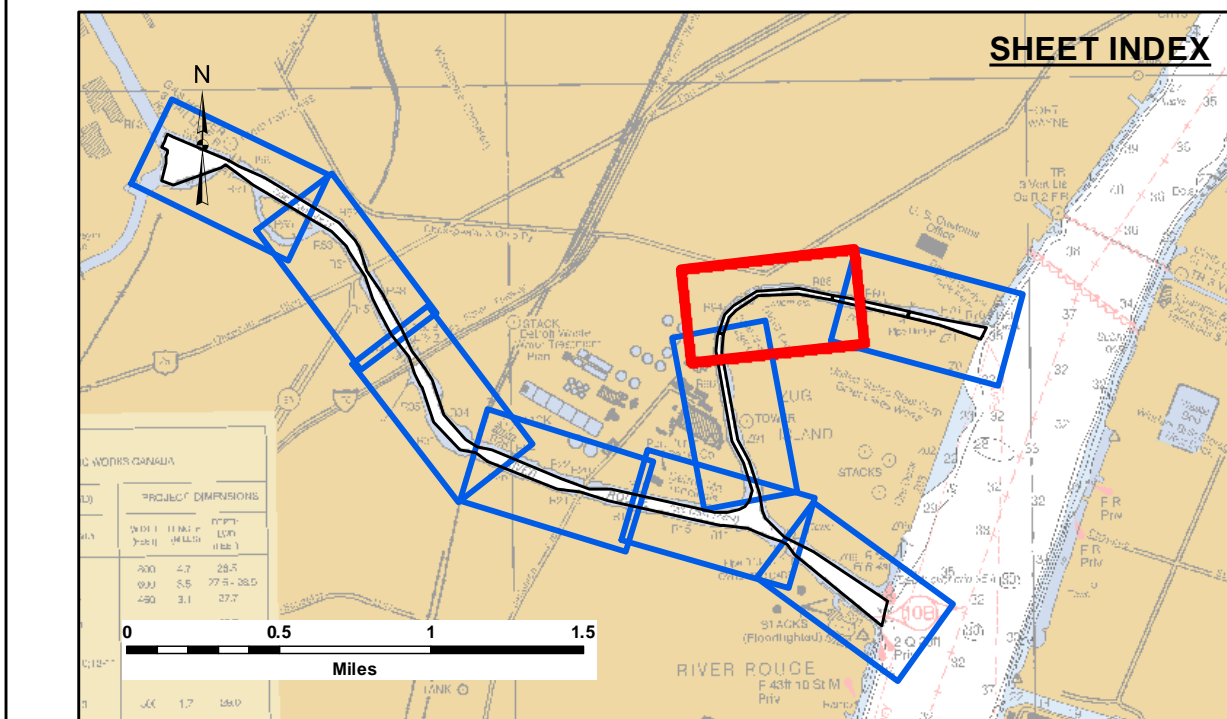
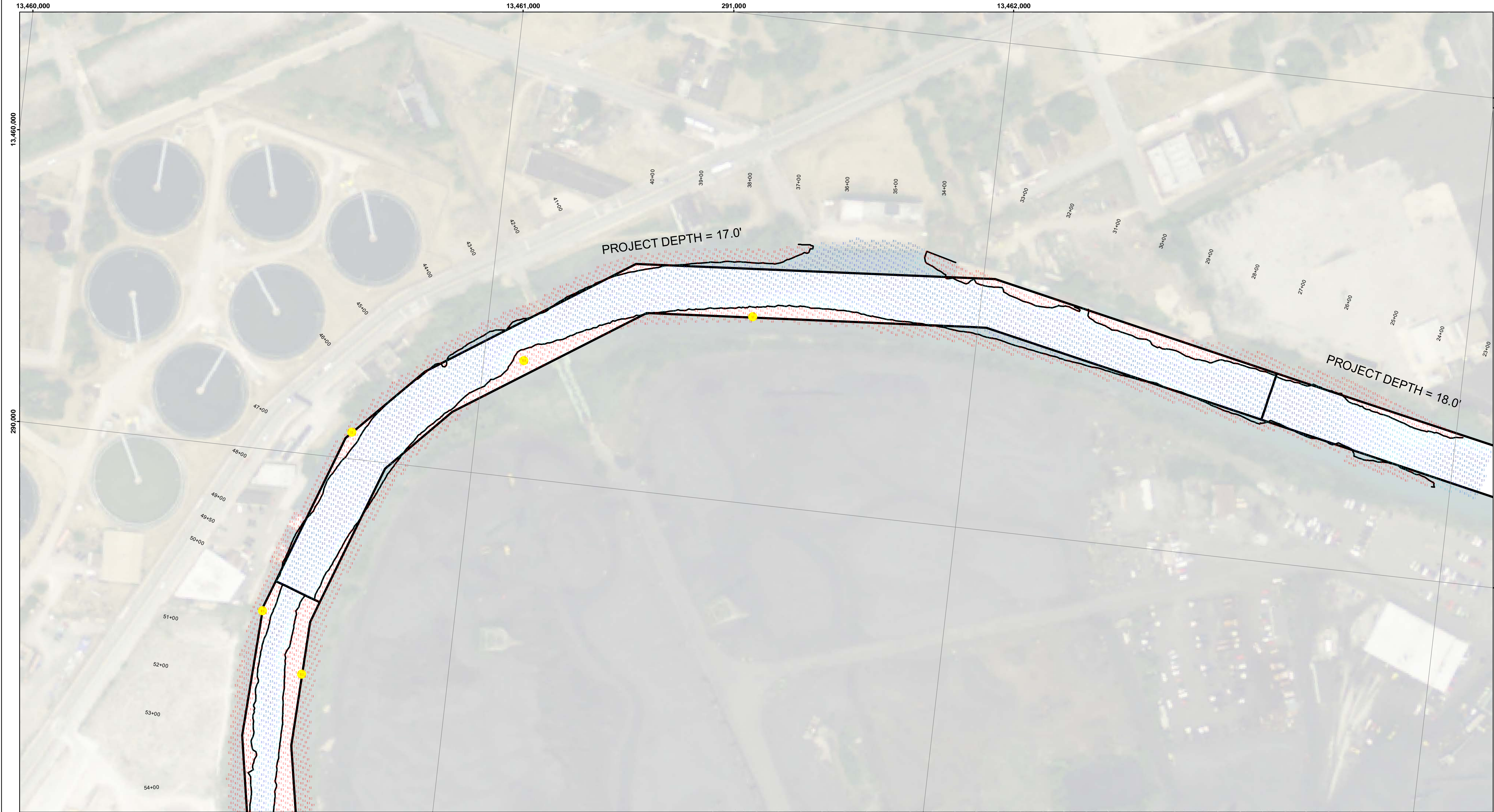


DISCLAIMER: The data represents the results of data collection and processing for a specific US Army Corps of Engineers activity and indicates the general existing conditions. The data is not intended to be used for any purpose other than the intended purpose of the data. The user is responsible for the results of any application of the data for other than its intended purpose.

ACCESS CONTRACTS: The United States Government furnishes these data and the recipient accepts and uses them with the express understanding that the data are not to be used for any purpose other than the intended purpose of the data. The data are not to be used for any purpose other than the intended purpose of the data. The data are not to be used for any purpose other than the intended purpose of the data.

U.S. ARMY CORPS OF ENGINEERS DETROIT DISTRICT	
Submitted:	Surveyed By:
Recommended:	Plotted By:
Approved:	Checked By:

River Rouge, MI
Rouge River
RR_01_ROU_20200416_CS
16 April 2020



LEGEND

Federal Navigation Channel

Federal Navigation Center Line

Cable Submarine

Cable Overhead

Contour Line

Placement Area

Shoaling Area

Shoalest Sounding**

Beacon, General

Red Navigation Buoy

Green Navigation Buoy

N

W

E

S

1 inch = 100 feet

Feet

0

200

400

600

NOTES:

PROJECT DEPTHS FOR THE ROUGE RIVER INCLUDE: 17', 18', 21' AND 25'

THE SOUNDINGS INDICATED HEREON ARE GENERALIZED DEPTHS AND ARE NOT REPRESENTATIVE OF THE FULL DATASET. THE SOUNDINGS REPRESENT THE MINIMUM DEPTH FOUND WITHIN THE 10 FOOT BY 10 FOOT AREA CENTERED ON THE TEXT, DERIVED FROM A 1 FOOT BY 1 FOOT AVERAGE DATASET AT CELL CENTER. THIS MAP SHOULD NOT BE USED FOR CHANNEL CLEARANCE OR VOLUME COMPUTATIONS. MINIMUM DEPTH DATA IS PRODUCED FOR STRIKE/SOAL REMOVAL OPERATIONS AND NOTICES TO NAVIGATION INTERESTS.

THE SOUNDINGS DEPICTED HEREIN ARE EXPRESSED IN U.S. SURVEY FEET AND TENTHS THEREOF AND ARE REFERENCED TO THE FOLLOWING DATUMS:

HORIZONTAL: MICHIGAN STATE PLANE COORDINATE SYSTEM, MICHIGAN SOUTH ZONE #2113, NORTH AMERICAN DATUM (NAD) OF 1983, U.S. SURVEY FEET

VERTICAL: INTERNATIONAL GREAT LAKES DATUM (IGLD) OF 1985. THE LOW WATER DATUM FOR THE ROUGE RIVER IS 571.2'.

TOP OF 5 FOOT GAGE BOARD LOCATED AT THE JEFFERSON AVE BRIDGE WAS USED TO DETERMINE THE WATER LEVEL.

THE SURVEY WAS CONDUCTED USING THE U.S.A.C.E. SURVEY VESSEL WHEELER, EMPLOYING THE FOLLOWING COMPONENTS:

POSITIONING: APPLANIX POS-M/V
CORRECTIONS: VRSRTK OR MARINESTAR GPS/VBS
SONAR: R2SONIC 2024 MULTIBEAM
SOFTWARE: HYPACK

U.S. ARMY CORPS OF ENGINEERS DETROIT DISTRICT		
Submitted:	Surveyed By:	
Recommended:	Plotted By:	
Approved:	Chief, Survey Section	
	Chief, Technical Services	

River Rouge, MI

Rouge River

RR_01_ROU_20200416_CS

16 April 2020

Sheet

Reference

Number

8 of 9

