

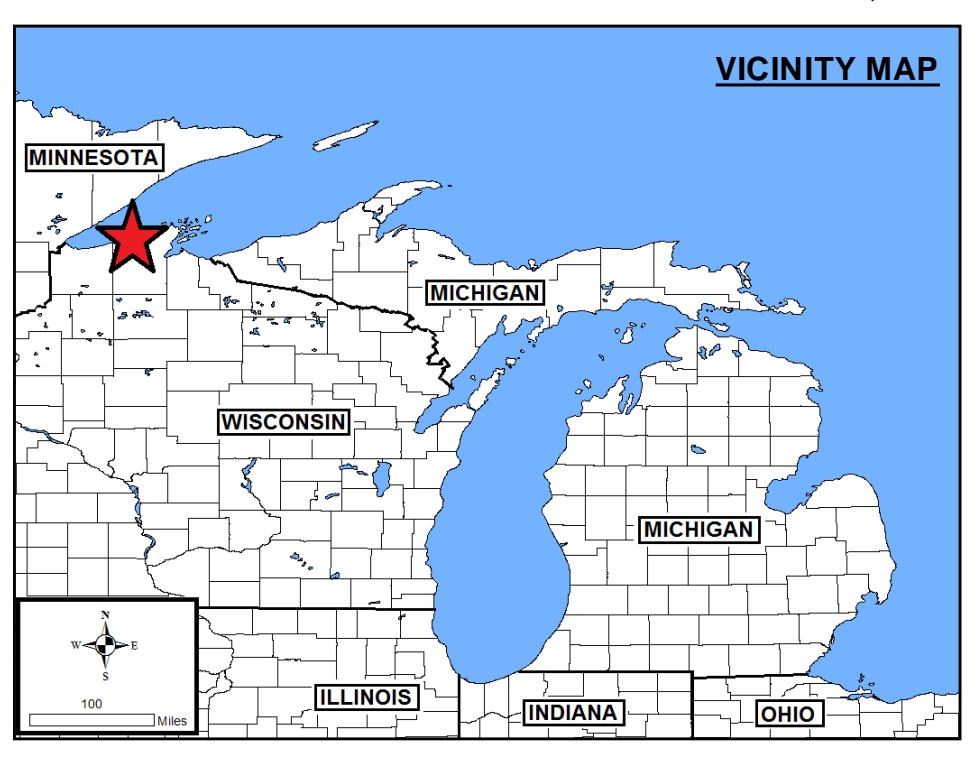
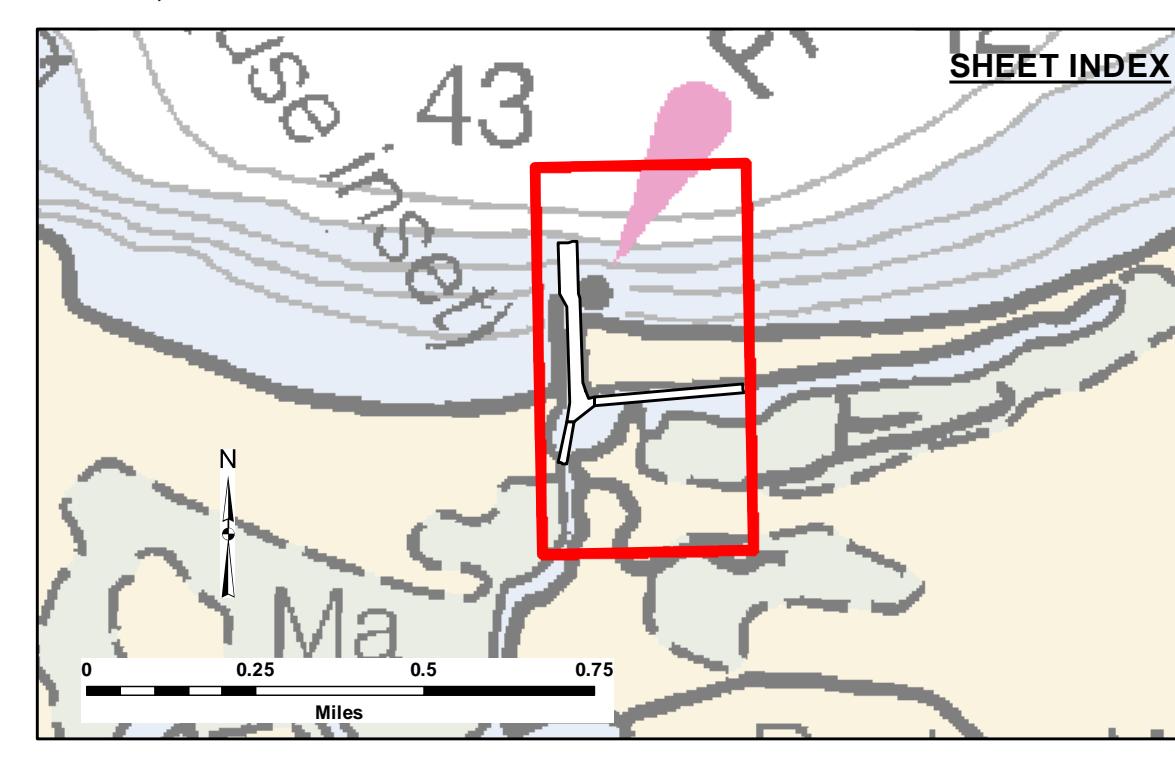


1,622,000

1,621,000

1,622,000

1,621,000

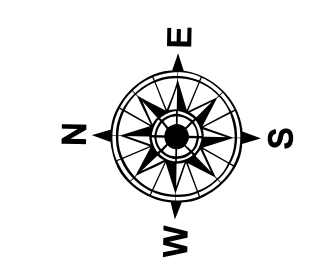


**LEGEND**

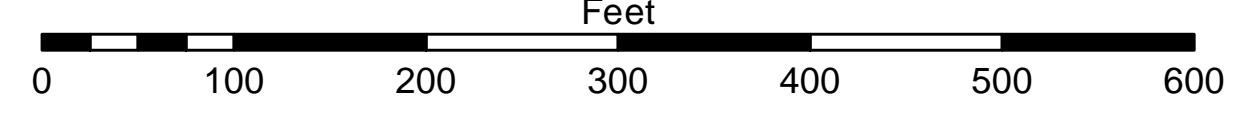
- Contour Lines
- ▭ Channel Limits

**SOUNDING LEGEND**

- LESS THAN PROJECT DEPTH
- PROJECT DEPTH
- PROJECT DEPTH +1'
- PROJECT DEPTH +2'
- PROJECT DEPTH +3'
- PROJECT DEPTH +4'
- PROJECT DEPTH +5'



1 inch = 100 feet



- NOTES:**
- 1) THE INFORMATION DEPICTED ON THIS CHART REPRESENTS THE RESULTS OF SURVEYS MADE ON THE DATE INDICATED AND CAN ONLY BE CONSIDERED AS INDICATING THE GENERAL CONDITIONS PRESENT AT THAT TIME.
  - 2) SOUNDING DEPTHS ARE REFERENCED TO INTERNATIONAL GREAT LAKES DATUM 1985 (IGLD85) LOW WATER DATUM ELEVATION 601.1 FEET ABOVE MEAN WATER LEVEL AT RIMOUSKI QUEBEC. WATER LEVEL READINGS WERE OBTAINED WITH RTK GPS VALUES. DEPTHS ARE MEASURED USING A ROSS LABS 825C SINGLE BEAM SONAR.
  - 3) HORIZONTAL POSITIONING IS DETERMINED USING THE REAL TIME KINEMATIC (RTK) GLOBAL NAVIGATION SATELLITE SYSTEM (GNSS). CORRECTIONS ARE PROVIDED FROM A BASE STATION LOCATED AT USACE CONTROL POINT 700. THE GPS RECEIVERS ARE MANUFACTURED BY TRIMBLE, MODELS SP751 AND R10.
  - 4) THE PROJECT DEPTHS FOR THIS AREA ARE 8.0' AND 15.0'.
  - 5) THE GRID COORDINATE SYSTEM SHOWN IS REFERENCED TO THE WISCONSIN STATE PLANE COORDINATE SYSTEM, LAMBERT REJECTION, NORTH ZONE (4801), NORTH AMERICAN DATUM OF 1983 (NAD83), US SURVEY FOOT.
  - 6) IMAGERY SOURCE: ESRI



**DISCLAIMER:** The data represents the results of data collection/processing for a specific US Army Corps of Engineers activity and indicates the general existing conditions, expressed, or implied concerning the accuracy, completeness, readability, usability or suitability for any particular purpose of the data. The user is responsible for the accuracy of any of the application of the data for other than its intended purpose.

**DISCLAIMER:** The United States Government furnishes these data and the recipient accepts and uses them with the express understanding that the United States Government makes no warranty, expressed, or implied concerning the accuracy, completeness, readability, usability or suitability for any particular purpose of the data. The user is responsible for the accuracy of any of the application of the data for other than its intended purpose. These data belong to the Government. Therefore the recipient may not transfer these data to others without also transferring this Disclaimer.

U.S. ARMY CORPS OF ENGINEERS  
DETROIT DISTRICT

Submitted By:	Surveyed By:
Recommended By: Chief, Survey Section	Plotted By:
Approved By:	Checked By:

**PORT WING HARBOR, WI**  
Port Wing Harbor  
PT\_01\_WNG\_20201006\_CS  
06 October 2020

Sheet Reference Number  
1 of 1