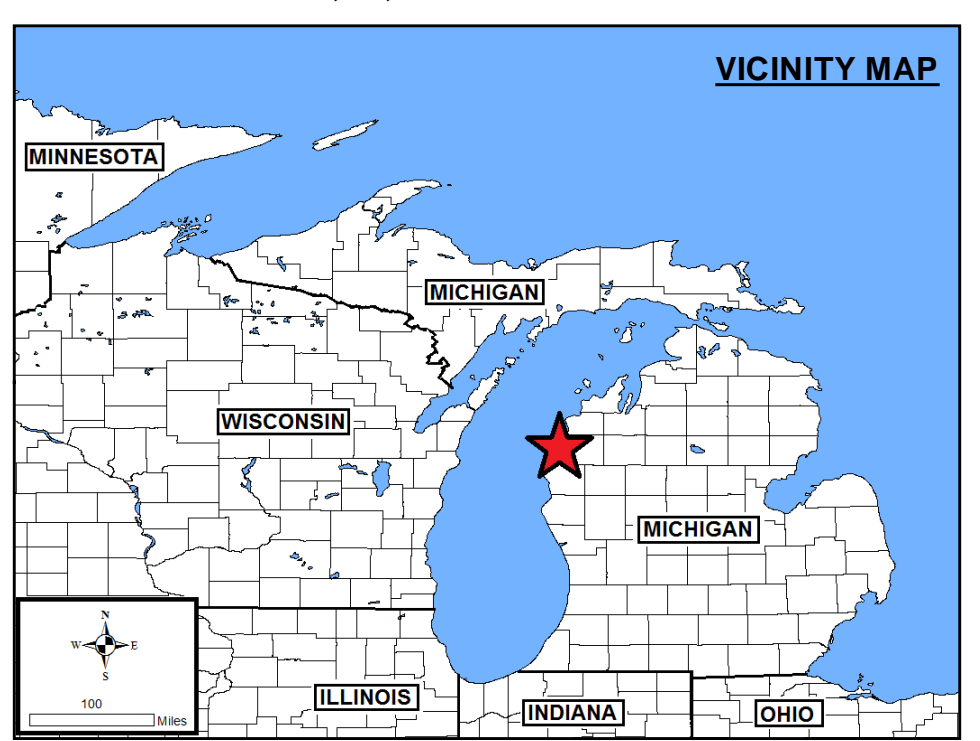
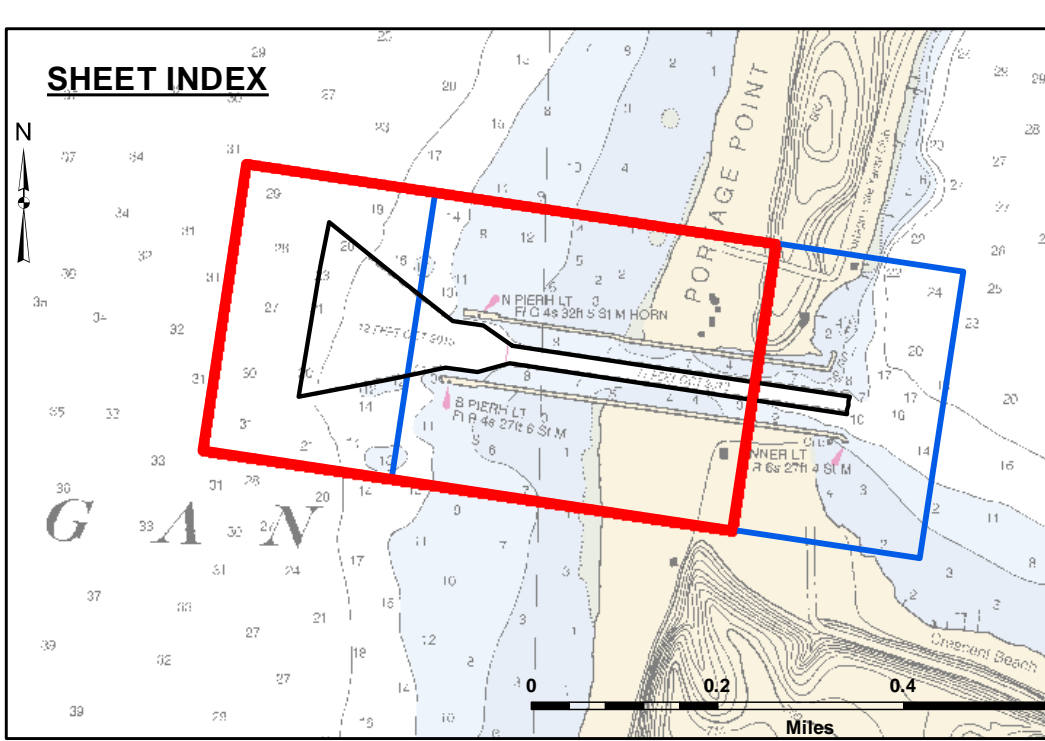


DISCLAIMER: The United States Government furnishes these data and the recipient accepts and uses them with the express understanding that the United States Government makes no warranty, expressed or implied, concerning the accuracy, completeness, reliability, usability, or suitability for any particular purpose of the data. The user is responsible for the accuracy, completeness, reliability, usability, or suitability for any particular purpose of the data. The user is responsible for the accuracy, completeness, reliability, usability, or suitability for any particular purpose of the data. The user is responsible for the accuracy, completeness, reliability, usability, or suitability for any particular purpose of the data.

| | |
|--|--------------|
| U.S. ARMY CORPS OF ENGINEERS DETROIT DISTRICT | |
| Submitted By: | Surveyed By: |
| Recommended By: | Plotted By: |
| Approved: | Checked By: |

Portage Lake Harbor, MI
Portage Lake Harbor
PO_01_TGE_20230928_CS
28 September 2023

Sheet Reference Number
1 of 2

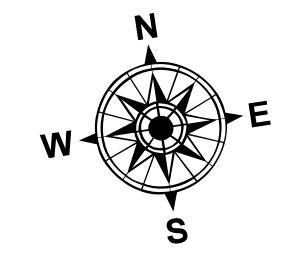


LEGEND

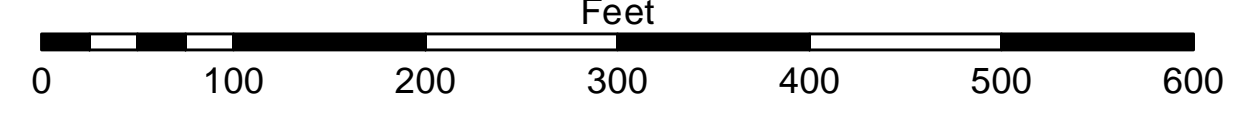
- Cable Submarine
- - - Cable Overhead
- Channel Limits
- ⊥ Beacon, General
- Contour Lines
- Channel Limits

SOUNDING LEGEND

- LESS THAN PROJECT DEPTH
- PROJECT DEPTH
- PROJECT DEPTH +1'
- PROJECT DEPTH +2'
- PROJECT DEPTH +3'
- PROJECT DEPTH +4'
- PROJECT DEPTH +5'



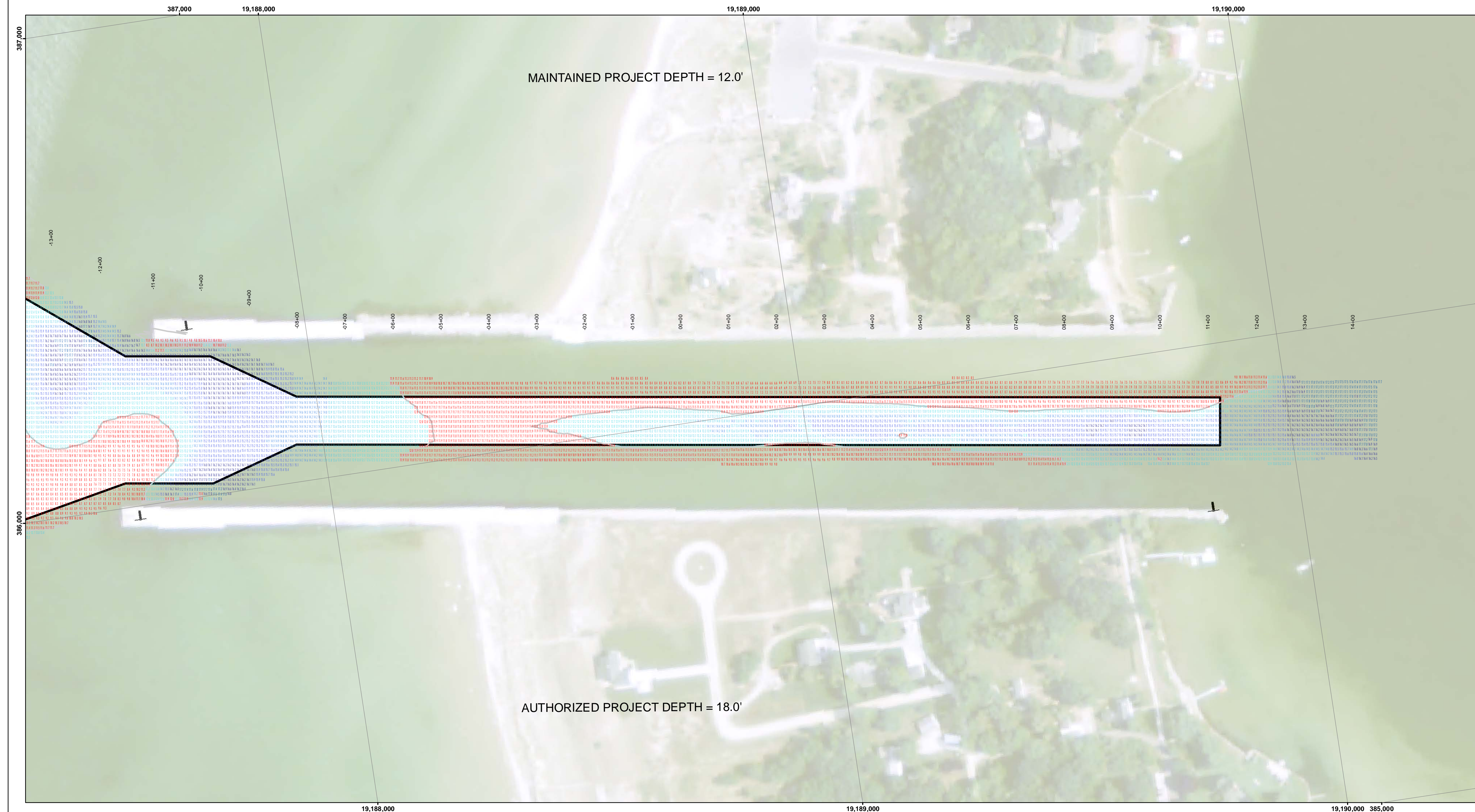
1 inch = 100 feet



NOTES:

1. THE SOUNDINGS INDICATED HEREON ARE GENERALIZED DEPTHS AND ARE NOT REPRESENTATIVE OF THE FULL DATASET. THE SOUNDINGS REPRESENT THE MINIMUM DEPTH FOUND WITHIN THE 10 FOOT BY 10 FOOT AREA CENTERED ON THE TEXT. DERIVED FROM A 1 FOOT BY 1 FOOT AVERAGE DATASET AT CELL CENTER. THIS MAP SHOULD NOT BE USED FOR CHANNEL CLEARANCE OR VOLUME COMPUTATIONS. MINIMUM DEPTH DATA IS PRODUCED FOR STRIKE/SHOAL REMOVAL OPERATIONS AND NOTICES TO NAVIGATION INTERESTS.
2. GRIDS SHOWN ARE BASED ON THE NATIONAL GEODETIC SURVEY PROJECTION TABLES, STATE OF MICHIGAN, CENTRAL ZONE (2112), LAMBERT PROJECTION, 1983 NORTH AMERICAN DATUM, US SURVEY FOOT.
3. ALL SOUNDINGS ARE REFERENCED TO I.G.L.D. FOR LAKE MICHIGAN, ELEVATION 577.5 FT. ABOVE MEAN SEA LEVEL AT RIMOUSKI, QUEBEC.
4. VERTICAL WATER LEVEL READINGS WERE TAKEN FROM A FIXED GAGE MARK ALONG THE SHEET STEEL WALL NEAR CROSS SECTION 12+00E IN PORTAGE LAKE HARBOR, MI.
5. PROJECT DEPTH = 12.0 FEET
6. POSITIONING: APPLANIX POS MVV CORRECTIONS; MARINESTAR GNSS G2+ SONAR: RZSONIC 2004 MULTIBEAM SOFTWARE: HYPACK 2022 VESSEL: LAUNCH 3058

2012 AERIAL PHOTOGRAPHY DATA SOURCE: NAIP



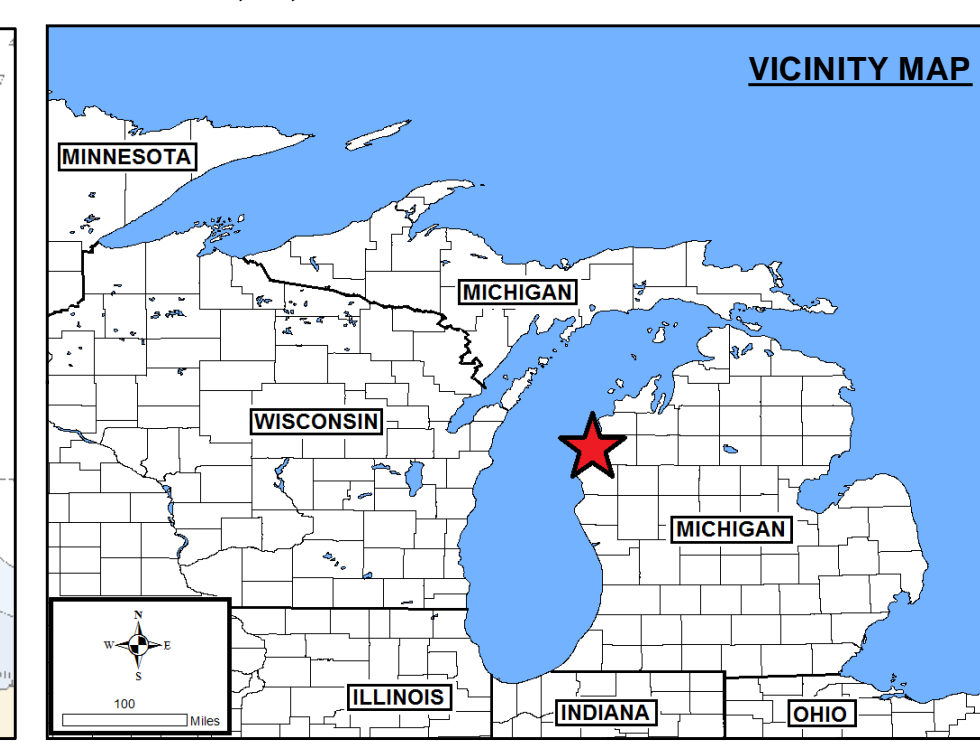
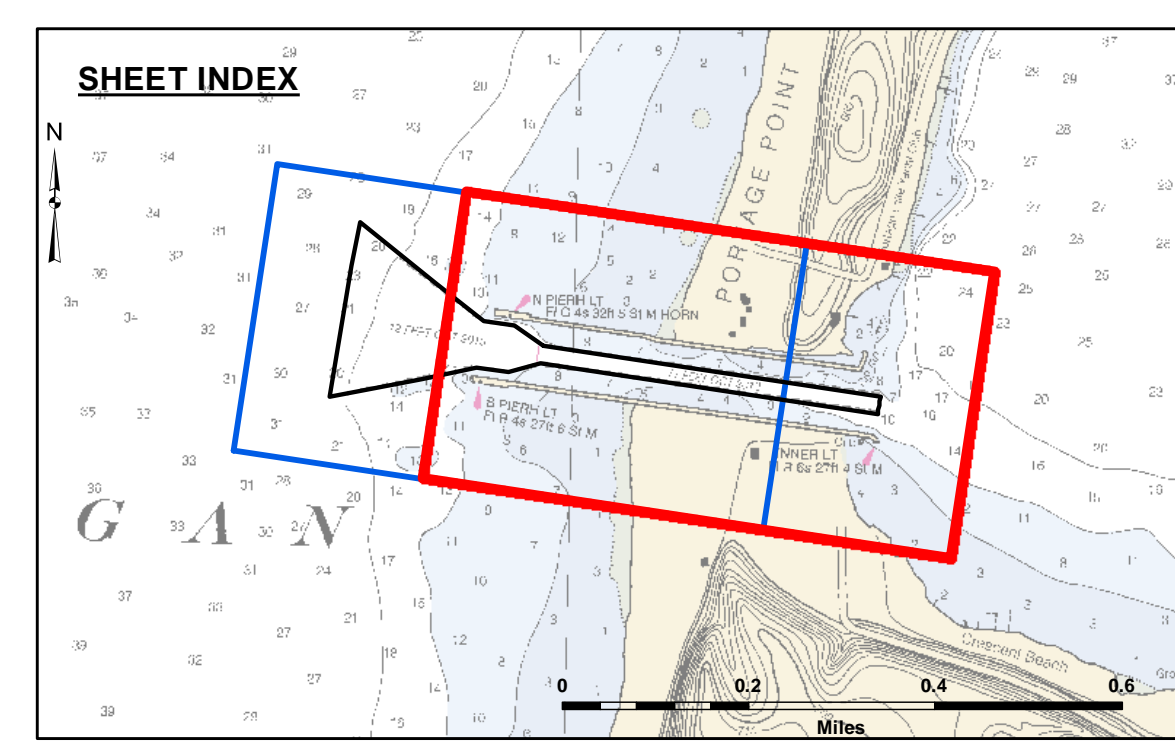
DISCLAIMER: The United States Government furnishes this data and the recipient accepts and uses them with the express understanding that the United States Government makes no warranty, expressed or implied, concerning the accuracy, completeness, reliability, or suitability for any particular purpose of the data. The United States Government shall not be liable for any damages, including reasonable attorneys' fees, incurred by any person by reason of any use of the data, whether or not such use was foreseeable, or otherwise, under any theory of liability, including negligence, and whether or not the data were provided in whole or in part for the recipient's intended purpose. These data are provided as a service to the recipient and are not to be used for any other purpose than that for which they were provided. The recipient may not transfer these data to others without also transferring this Disclaimer.

| | |
|--------------|--------------|
| Submitted: | Surveyed By: |
| Recommended: | Plotted By: |
| Approved: | Checked By: |

U.S. ARMY CORPS OF ENGINEERS
DETROIT DISTRICT

Portage Lake Harbor, MI
Portage Lake Harbor
PO_01_TGE_20230928_CS
28 September 2023

Sheet Reference Number
2 of 2

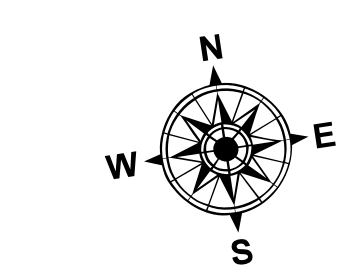


LEGEND

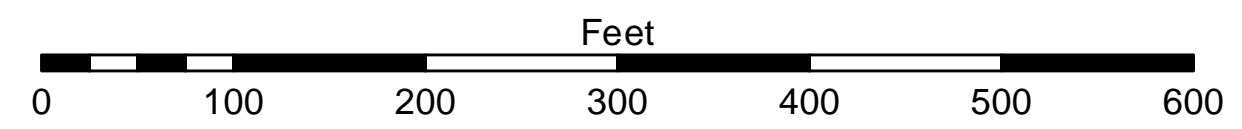
- Cable Submarine
- - - Cable Overhead
- Channel_Limits
- ⊥ Beacon, General
- Contour Lines
- Channel_Limits

SOUNDING LEGEND

- LESS THAN PROJECT DEPTH
- PROJECT DEPTH
- PROJECT DEPTH +1'
- PROJECT DEPTH +2'
- PROJECT DEPTH +3'
- PROJECT DEPTH +4'
- PROJECT DEPTH +5'



1 inch = 100 feet



NOTES:

1. THE SOUNDINGS INDICATED HEREON ARE GENERALIZED DEPTHS AND ARE NOT REPRESENTATIVE OF THE FULL DATASET. THE SOUNDINGS REPRESENT THE MINIMUM DEPTH FOUND WITHIN THE 10 FOOT BY 10 FOOT AREA CENTERED ON THE TEXT. DERIVED FROM A 1 FOOT BY 1 FOOT AVERAGE DATASET AT CELL CENTER. THIS MAP SHOULD NOT BE USED FOR CHANNEL CLEARANCE OR VOLUME COMPUTATIONS. MINIMUM DEPTH DATA IS PRODUCED FOR STRIKE/SWAL REMOVAL OPERATIONS AND NOTICES TO NAVIGATION INTERESTS.
2. GRIDS SHOWN ARE BASED ON THE NATIONAL GEODETIC SURVEY PROJECTION TABLES, STATE OF MICHIGAN, CENTRAL ZONE (2112), LAMBERT PROJECTION, 1983 NORTH AMERICAN DATUM, US SURVEY FOOT.
3. ALL SOUNDINGS ARE REFERENCED TO I.G.L.D. FOR LAKE MICHIGAN, ELEVATION 577.5 FT. ABOVE MEAN SEA LEVEL AT RIMOUSKI, QUEBEC.
4. VERTICAL WATER LEVEL READINGS WERE TAKEN FROM A FIXED GAGE MARK ALONG THE SHEET STEEL WALL NEAR CROSS SECTION 12+00E IN PORTAGE LAKE HARBOR, MI.
5. PROJECT DEPTH = 12.0 FEET
6. POSITIONING: APPLANIX POS MV
 CORRECTIONS: MARINESTAR GNSS G2+
 SONAR: RZSONIC 2024 MULTIBEAM
 SOFTWARE: HYPACK 2022
 VESSEL: LAUNCH 3058

2012 AERIAL PHOTOGRAPHY DATA SOURCE: NAIP