



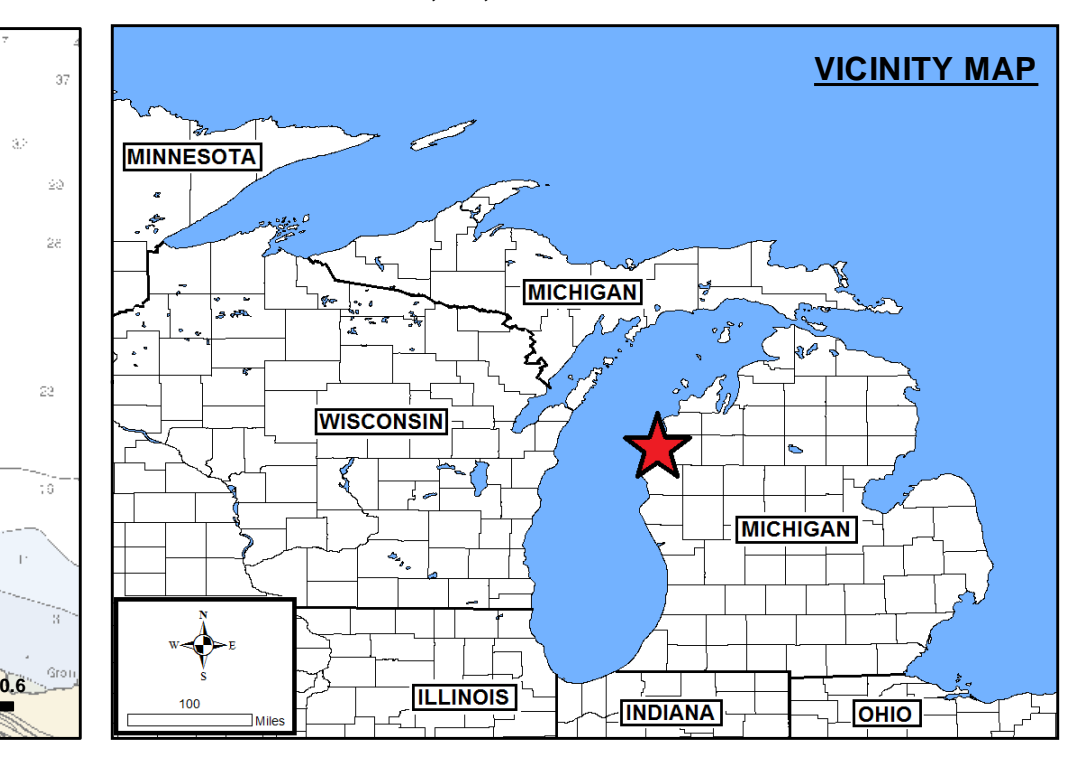
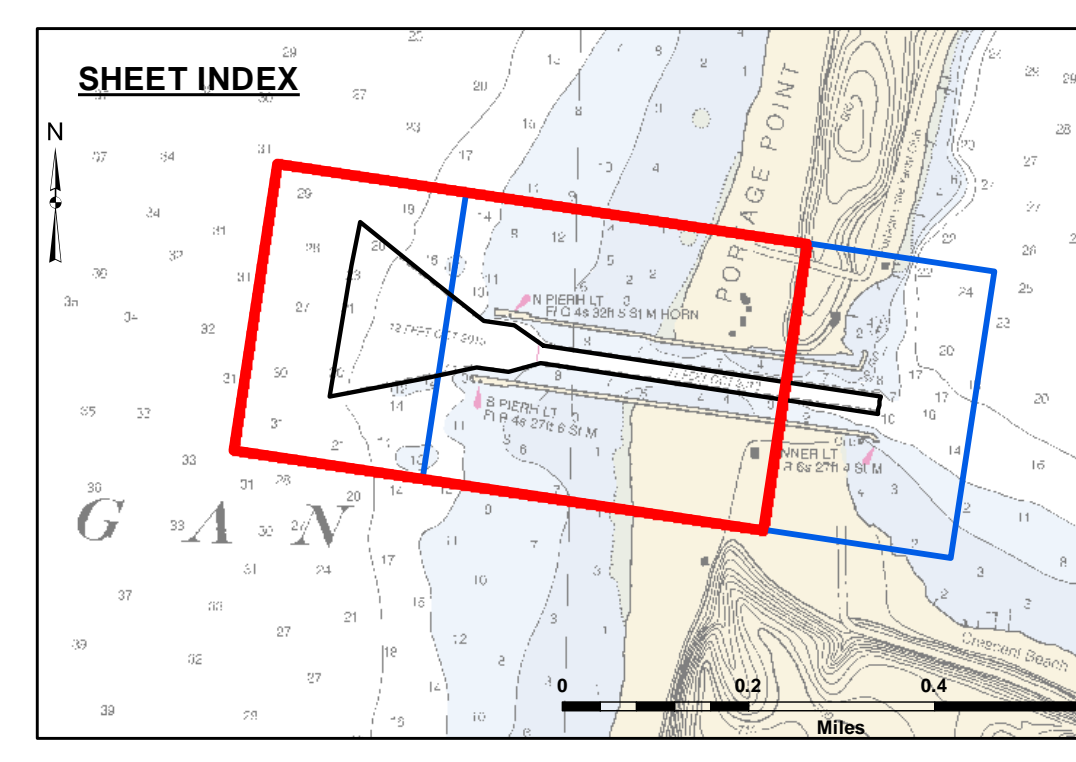
DISCLAIMER: The United States Government furnishes these data and the recipient accepts and uses them with the express understanding that the United States Government makes no warranty, expressed or implied, concerning the accuracy, completeness, reliability, or suitability for any particular purpose of the data. The recipient shall be responsible for the accuracy, completeness, reliability, or suitability for any particular purpose of the data. These data are provided for the recipient's use only and are not to be used for any other purpose. The recipient may not transfer these data to others without also transferring this disclaimer.

Submitted:	Surveyed By:
Recommended:	Plotted By:
Approved:	Checked By:

U.S. ARMY CORPS OF ENGINEERS
DETROIT DISTRICT

Portage Lake Harbor, MI
Portage Lake Harbor
PO_01_TGE_20211007_CS
07 October 2021

Sheet Reference Number
1 of 2

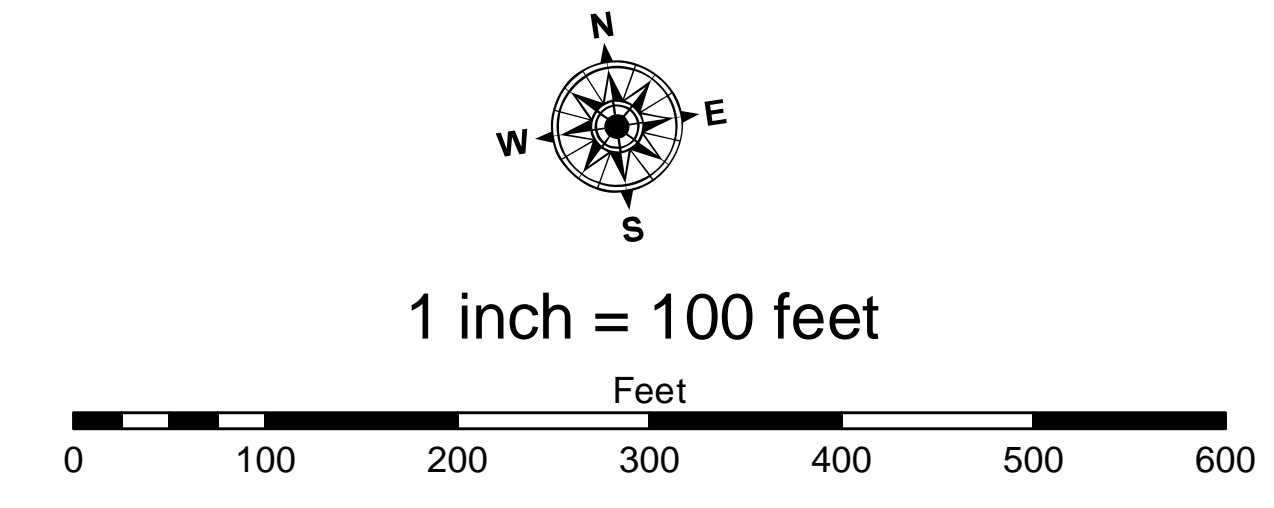


LEGEND

- Cable Submarine
- - - Cable Overhead
- ▭ Channel Limits
- ⊥ Beacon, General
- Contour Lines
- ▭ Channel Limits

SOUNDING LEGEND

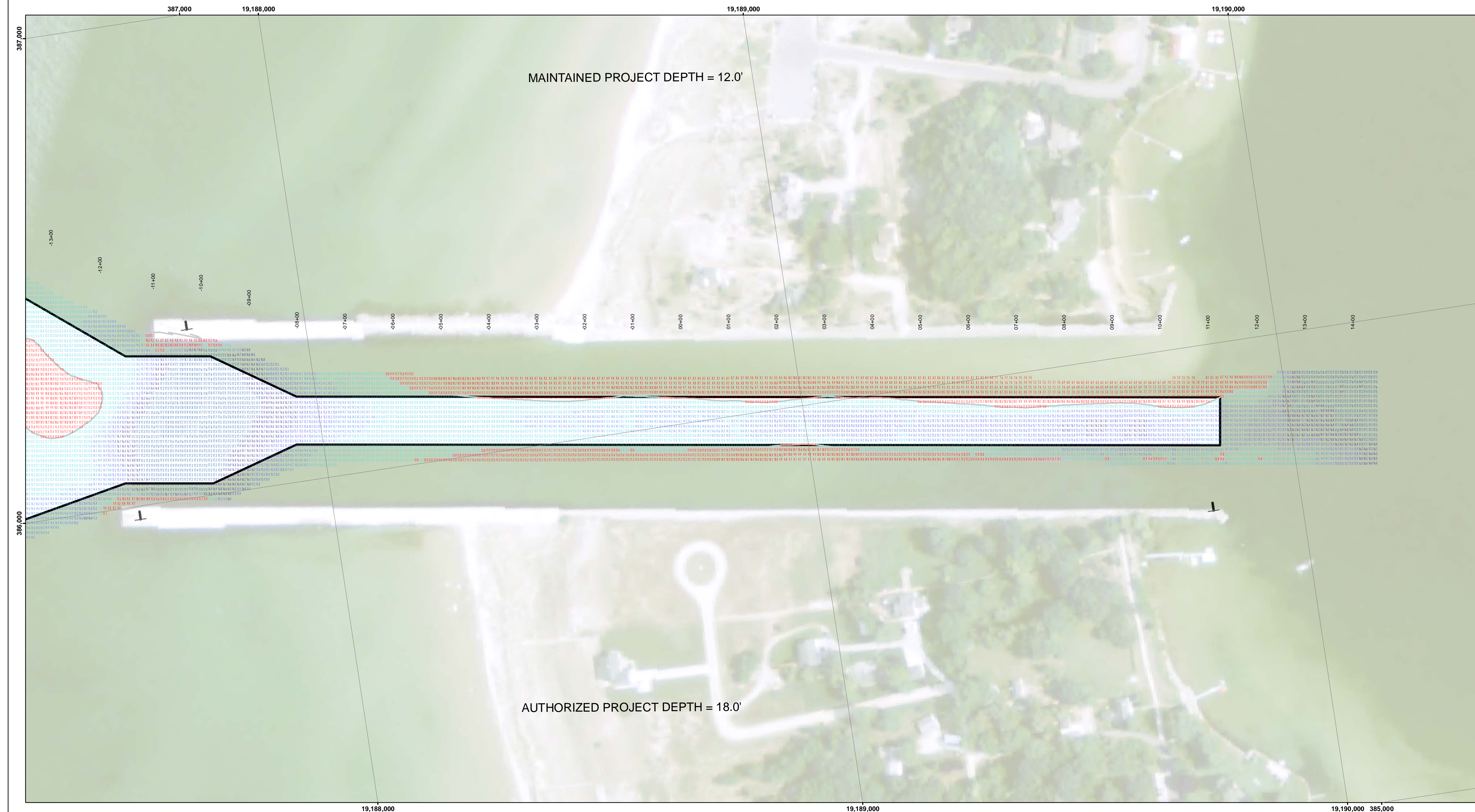
- LESS THAN PROJECT DEPTH
- PROJECT DEPTH
- PROJECT DEPTH +1'
- PROJECT DEPTH +2'
- PROJECT DEPTH +3'
- PROJECT DEPTH +4'
- PROJECT DEPTH +5'



NOTES:

1. THE SOUNDINGS INDICATED HEREON ARE GENERALIZED DEPTHS AND ARE NOT REPRESENTATIVE OF THE FULL DATASET. THE SOUNDINGS REPRESENT THE MINIMUM DEPTH FOUND WITHIN THE 10 FOOT BY 10 FOOT AREA CENTERED ON THE TEXT. DERIVED FROM A 1 FOOT BY 1 FOOT AVERAGE DATASET AT CELL CENTER. THIS MAP SHOULD NOT BE USED FOR CHANNEL CLEARANCE OR VOLUME COMPUTATIONS. MINIMUM DEPTH DATA IS PRODUCED FOR STRIKE/SWATH REMOVAL OPERATIONS AND NOTICES TO NAVIGATION INTERESTS.
2. GRIDS SHOWN ARE BASED ON THE NATIONAL GEODETIC SURVEY PROJECTION TABLES, STATE OF MICHIGAN, CENTRAL ZONE (2112), LAMBERT PROJECTION, 1983 NORTH AMERICAN DATUM, US SURVEY FOOT.
3. ALL SOUNDINGS ARE REFERENCED TO I.G.L.D. FOR LAKE MICHIGAN, ELEVATION 577.5 FT. ABOVE MEAN SEA LEVEL AT RIMOUSKI, QUEBEC.
4. VERTICAL WATER LEVEL READINGS WERE TAKEN FROM A FIXED GAGE MARK ALONG THE SHEET STEEL WALL NEAR CROSS SECTION 11+00E IN PORTAGE LAKE HARBOR, MI.
5. PROJECT DEPTH = 12.0 FEET
6. POSITIONING: APPLANIX POS M/V CORRECTIONS: OMNISTAR GNSS G2 SONAR: R2SONIC 2004 MULTIBEAM SOFTWARE: HYPACK 2018 VESSEL: LAUNCH 3058

2012 AERIAL PHOTOGRAPHY DATA SOURCE: NAIP



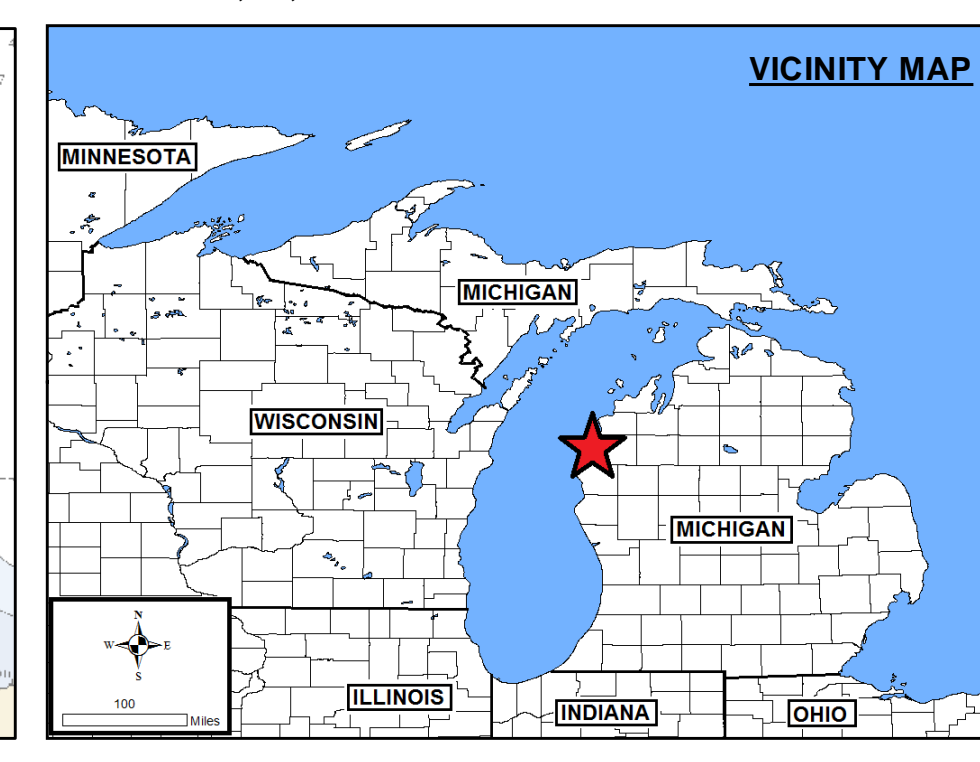
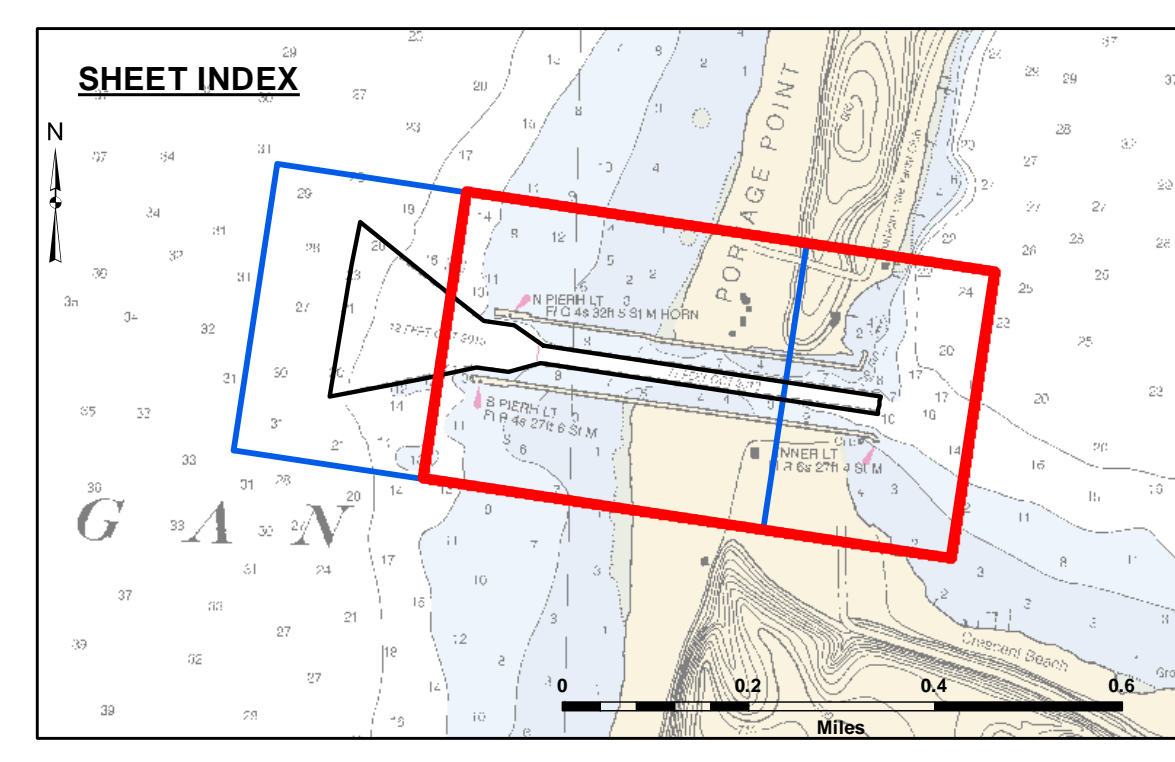
DISCLAIMER: The data represents the results of data collection/processing for a specific US Army Corps of Engineers activity and does not represent the general existing conditions. The user is responsible for the results accuracy, specifications, and the use of the data for other than its intended purpose.

ACCESS CONSTRAINTS: The United States Government furnishes these data and the recipient accepts and uses them with the express understanding that the data are not to be used for any purpose other than that for which they were provided. The user is responsible for the results accuracy, specifications, and the use of the data for other than its intended purpose.

DISCLAIMER: The data represents the results of data collection/processing for a specific US Army Corps of Engineers activity and does not represent the general existing conditions. The user is responsible for the results accuracy, specifications, and the use of the data for other than its intended purpose.

U.S. ARMY CORPS OF ENGINEERS DETROIT DISTRICT	
Submitted By:	Chief, Survey Station
Recommended By:	Chief, Technical Services
Approved By:	

Portage Lake Harbor, MI
Portage Lake Harbor
PO_01_TGE_20211007_CS
07 October 2021

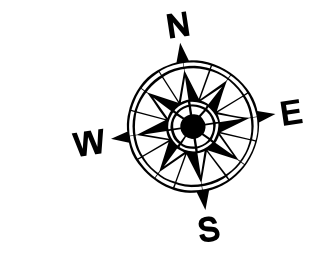


LEGEND

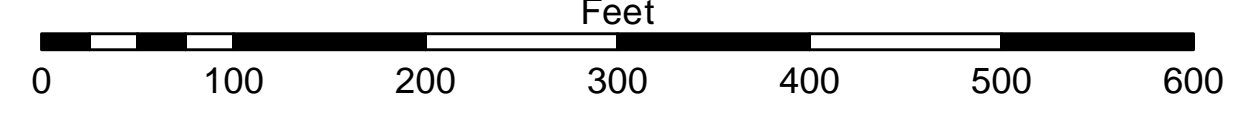
- Cable Submarine
- - - Cable Overhead
- Channel Limits
- ⊥ Beacon, General
- Contour Lines
- Channel Limits

SOUNDING LEGEND

- LESS THAN PROJECT DEPTH
- PROJECT DEPTH
- PROJECT DEPTH +1'
- PROJECT DEPTH +2'
- PROJECT DEPTH +3'
- PROJECT DEPTH +4'
- PROJECT DEPTH +5'



1 inch = 100 feet



NOTES:

1. THE SOUNDINGS INDICATED HEREON ARE GENERALIZED DEPTHS AND ARE NOT REPRESENTATIVE OF THE FULL DATASET. THE SOUNDINGS REPRESENT THE MINIMUM DEPTH FOUND WITHIN THE 10 FOOT BY 10 FOOT AREA CENTERED ON THE TEXT. DERIVED FROM A 1 FOOT BY 1 FOOT AVERAGE DATASET AT CELL CENTER. THIS MAP SHOULD NOT BE USED FOR CHANNEL CLEARANCE OR VOLUME COMPUTATIONS. MINIMUM DEPTH DATA IS PRODUCED FOR STRIKE/SOAL REMOVAL OPERATIONS AND NOTICES TO NAVIGATION INTERESTS.
2. GRIDS SHOWN ARE BASED ON THE NATIONAL GEODETIC SURVEY PROJECTION TABLES, STATE OF MICHIGAN, CENTRAL ZONE (2112), LAMBERT PROJECTION, 1983 NORTH AMERICAN DATUM, US SURVEY FOOT.
3. ALL SOUNDINGS ARE REFERENCED TO I.G.L.D. FOR LAKE MICHIGAN, ELEVATION 577.5 FT. ABOVE MEAN SEA LEVEL AT RIMOUSKI, QUEBEC.
4. VERTICAL WATER LEVEL READINGS WERE TAKEN FROM A FIXED GAGE MARK ALONG THE SHEET STEEL WALL NEAR CROSS SECTION 11+00E IN PORTAGE LAKE HARBOR, MI.
5. PROJECT DEPTH = 12.0 FEET
6. POSITIONING: APPLANIX POS M/V CORRECTIONS: OMINSTAR GNSS G2 SONAR: RZSONIC 2004 MULTIBEAM SOFTWARE: HYPACK 2018 VESSEL: LAUNCH 3058

2012 AERIAL PHOTOGRAPHY DATA SOURCE: NAIP

Sheet Reference Number
2 of 2