

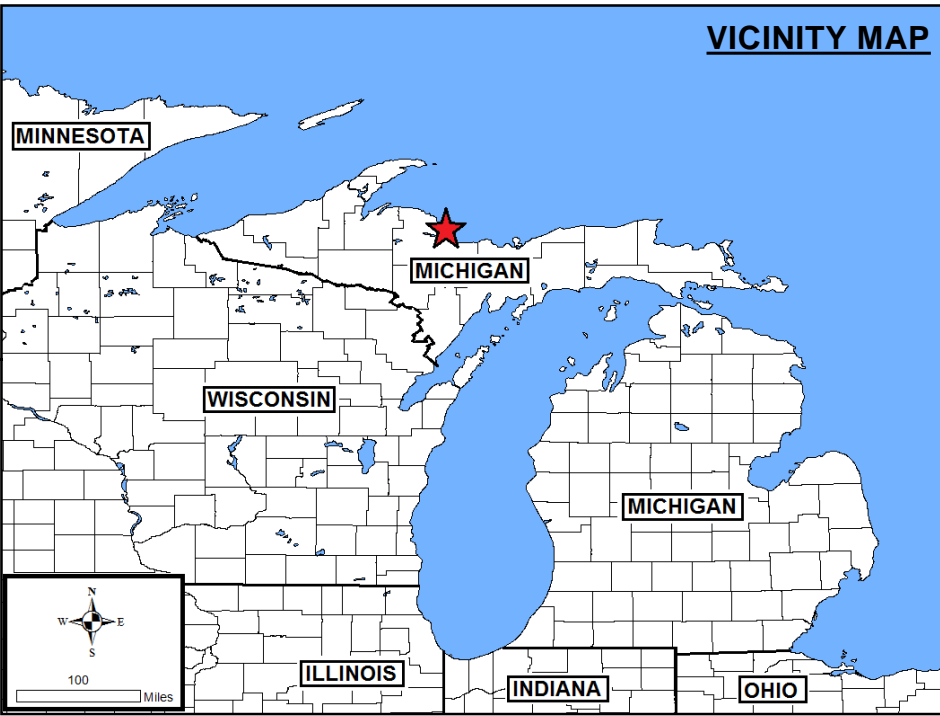
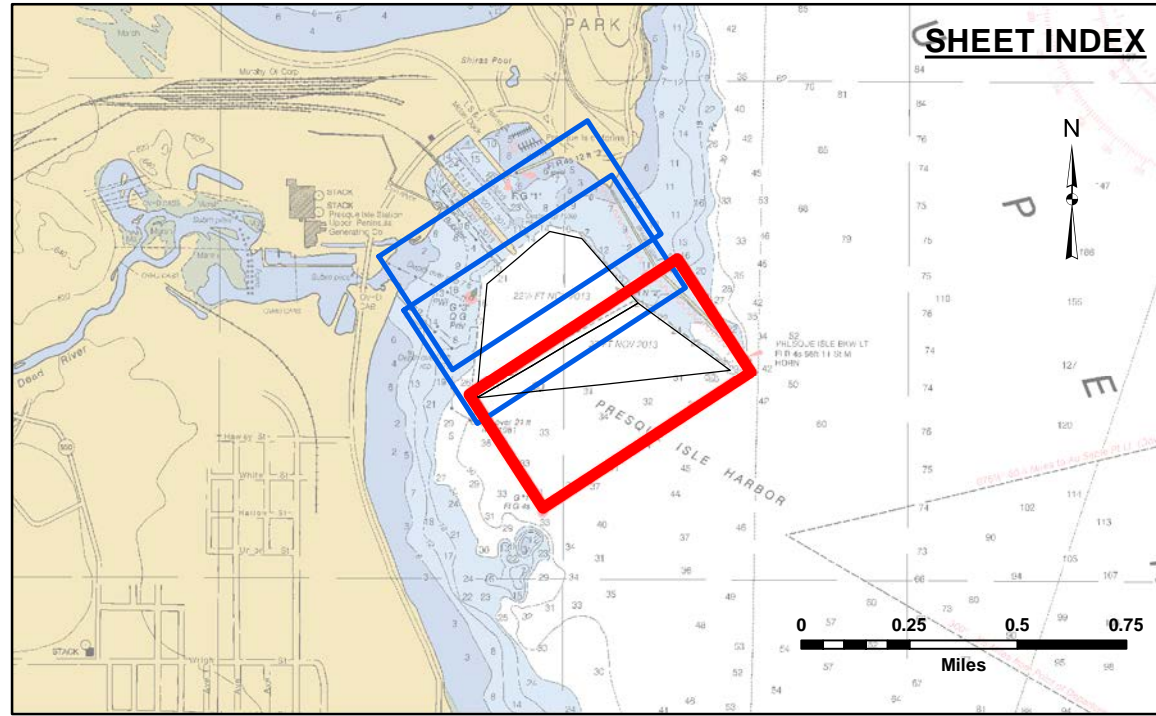
Product Use Liability: The data represents the results of data collection processing for a specific US Army Corps of Engineers activity and indicates the general existing conditions. The user is responsible for the results of any of the application of the data for other than its intended purpose.

Accession: The United States Government furnishes these data and the recipient accepts and uses them with the express understanding that the data are not to be used for any purpose other than that for which they were provided. The recipient may not transfer these data to others without transferring the Disclaimer.

U.S. ARMY CORPS OF ENGINEERS DETROIT DISTRICT		
Submitted:	Surveyed By:	
Recommended:	Plotted By:	
Approved:	Chief, Technical Services	

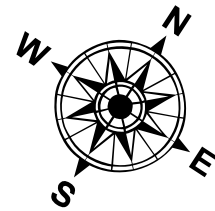
Presque Isle, MI
Presque Isle Harbor
PL_01_PSQ_20221013_CS
13 October 2022

Sheet
Reference
Number
3 of 3

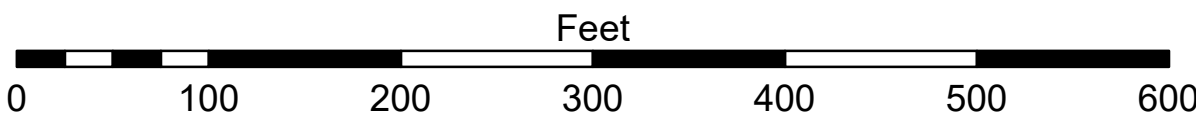


LEGEND	
.....	Cable Submarine
--	Cable Overhead
—	Contour Lines
□	Channel Limits

SOUNDING LEGEND	
■	LESS THAN PROJECT DEPTH
■	PROJECT DEPTH
■	PROJECT DEPTH +1'
■	PROJECT DEPTH +2'
■	PROJECT DEPTH +3'
■	PROJECT DEPTH +4'
■	PROJECT DEPTH +5'



1 inch = 100 feet



- NOTES:
1. THE CHARTED SOUNDINGS REPRESENT THE MINIMUM DEPTH MEASURED AT THE TIME OF THE SURVEY WITHIN THE 10' X 10' AREA CENTERED ON THE TEXT. DERIVED FROM A 1" X 1" AVERAGE DATASET AT CELL CENTER. THIS CHART SHOULD NOT BE USED FOR CHANNEL CLEARANCE OR VOLUME COMPUTATIONS. MINIMUM DEPTH DATA IS PRODUCED FOR STRIKE/SOAL REMOVAL OPERATIONS AND NOTICE TO NAVIGATION INTERESTS.
 2. ALL SOUNDING DEPTHS ARE REFERENCED TO INTERNATIONAL GREAT LAKES DATUM 1985 (IGLD 85) LOW WATER DATUM ELEVATION 601.1 FEET ABOVE MEAN WATER LEVEL AT RIMOUSKI, QUEBEC. WATER LEVEL READINGS WERE OBTAINED WITH REAL TIME KINEMATIC (RTK) GLOBAL POSITIONING SYSTEM (GPS) VALUES. DEPTHS ARE MEASURED USING AN R2SONIC 2024 MULTIBEAM SONAR.
 3. HORIZONTAL POSITIONING IS DETERMINED USING RTK GPS CORRECTIONS FROM A BASE STATION. THE GPS RECEIVER IS MANUFACTURED BY APPLANIX MARINE POS/MV VER. 4.0.
 4. THE GRID COORDINATE SYSTEM IS MICHIGAN STATE PLANE, NORTH ZONE (2111), NORTH AMERICAN DATUM 1983 (NAD83), US SURVEY FOOT.
 5. 2010 AERIAL PHOTOGRAPHY DATA SOURCE: USGS