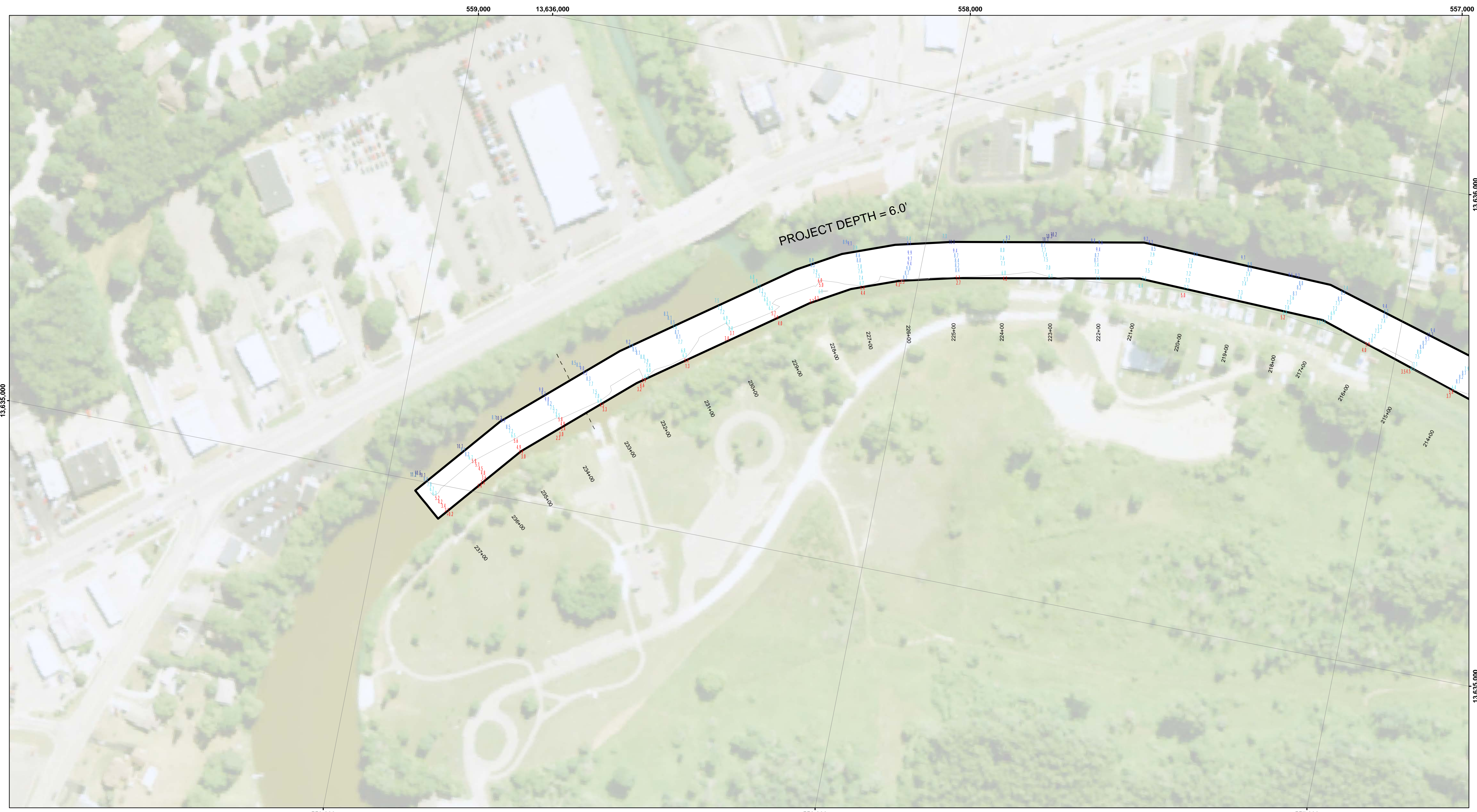


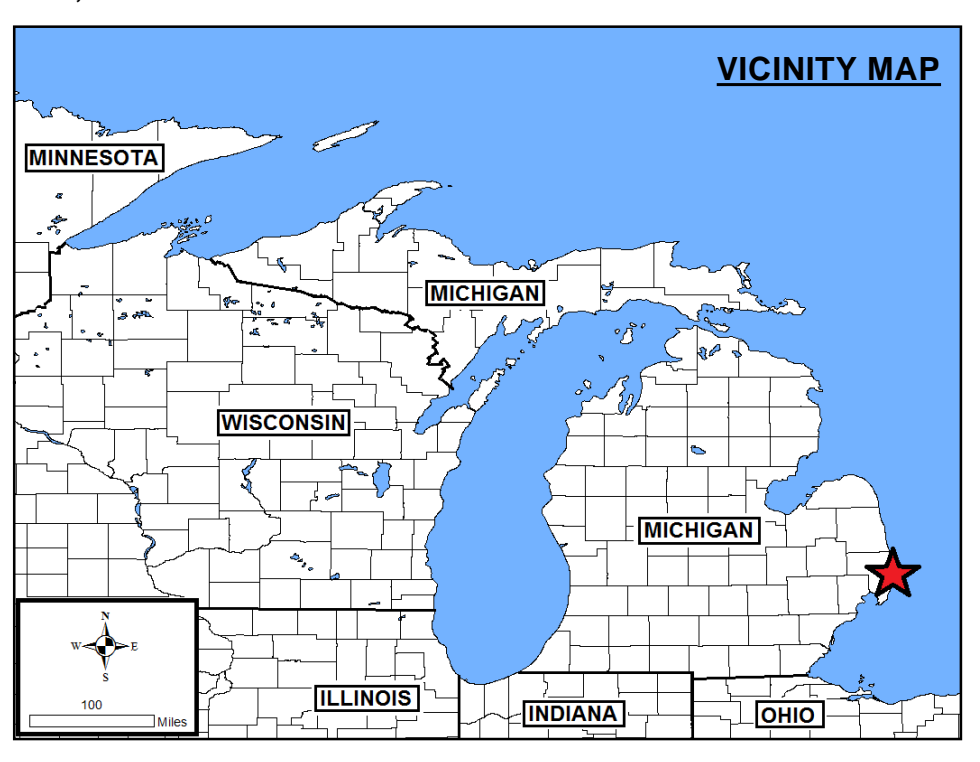
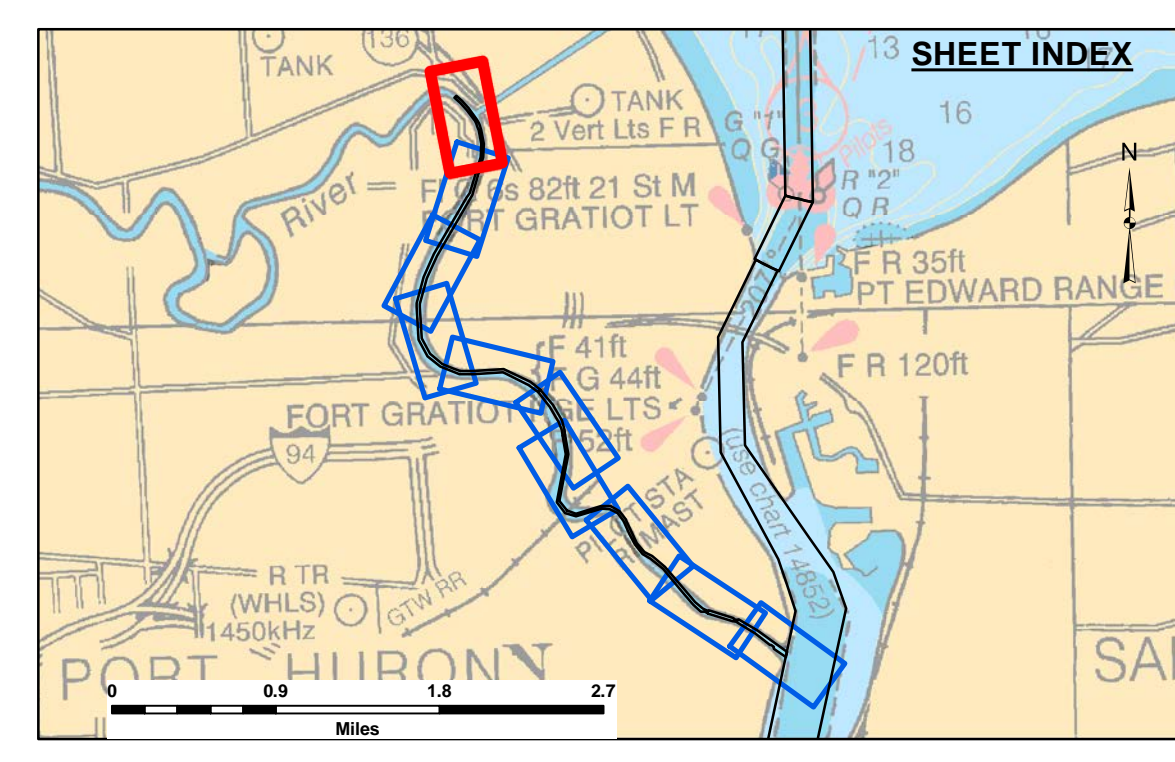


Disclaimer: The data represented by the results of data collection and processing for a specific US Army Corps of Engineers activity and indicates the general existing conditions. The user is responsible for the results of any of the application of the data for other than its intended purpose.

Access Constraints: The United States Government furnishes these data and the recipient accepts and uses them with the express understanding that the data are not to be used for any purpose other than that for which they were provided. The recipient may not transfer these data to others without also transferring the Disclaimer.

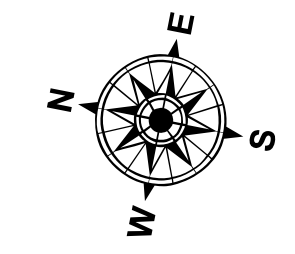


U.S. ARMY CORPS OF ENGINEERS DETROIT DISTRICT		
Submitted:	Surveyed By:	
Recommended:	Plotted By:	
Approved:	Chief, Survey Station	Chief, Technical Services

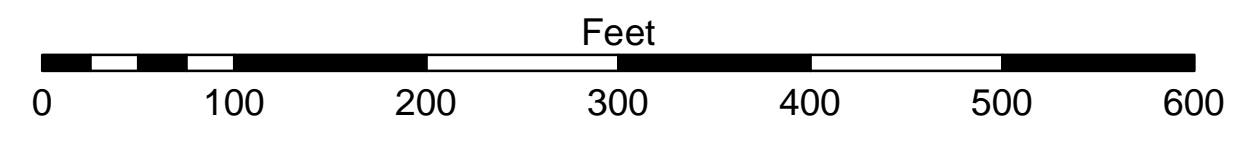


- LEGEND**
- Cable Submarine
 - - - Cable Overhead
 - Placement Area
 - ⊥ Beacon, General
 - Contour Lines
 - ▭ Channel Limits

- SOUNDING LEGEND**
- LESS THAN PROJECT DEPTH
 - PROJECT DEPTH
 - PROJECT DEPTH +1'
 - PROJECT DEPTH +2'
 - PROJECT DEPTH +3'
 - PROJECT DEPTH +4'
 - PROJECT DEPTH +5'



1 inch = 100 feet



NOTES: THE SOUNDINGS AND ASSOCIATED INFORMATION REPRESENTED HEREIN ARE THE RESULT OF SURVEYS MADE ON THE DATE AS INDICATED AND CAN ONLY BE CONSIDERED REPRESENTATIVE OF THE GENERAL CONDITIONS EXISTING AT THE TIME OF SURVEY.

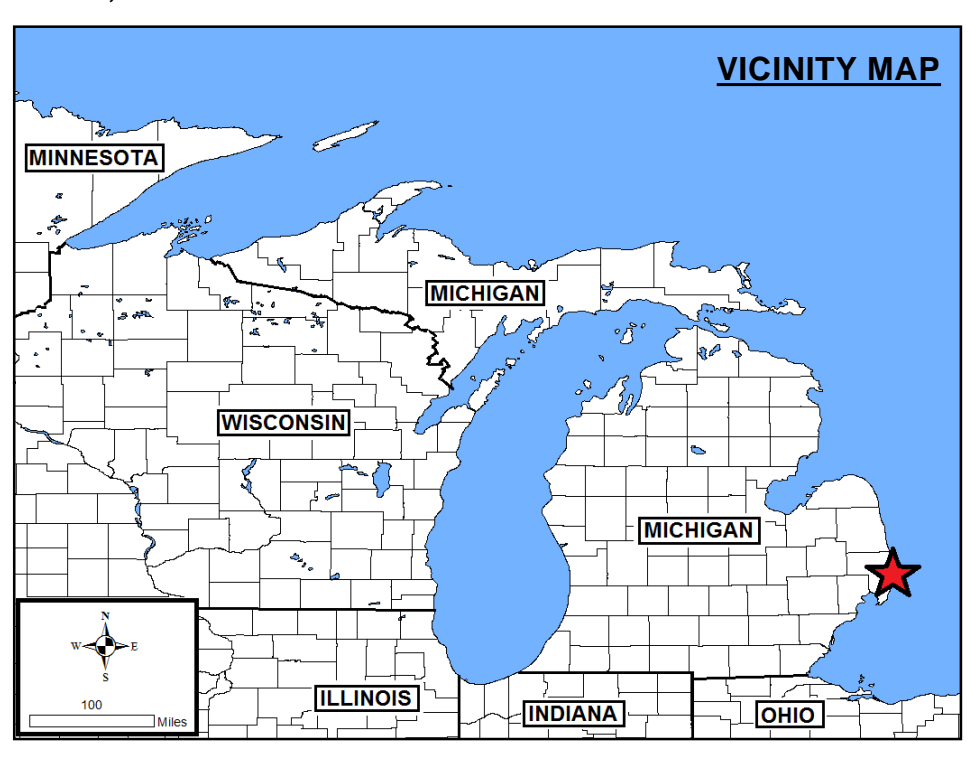
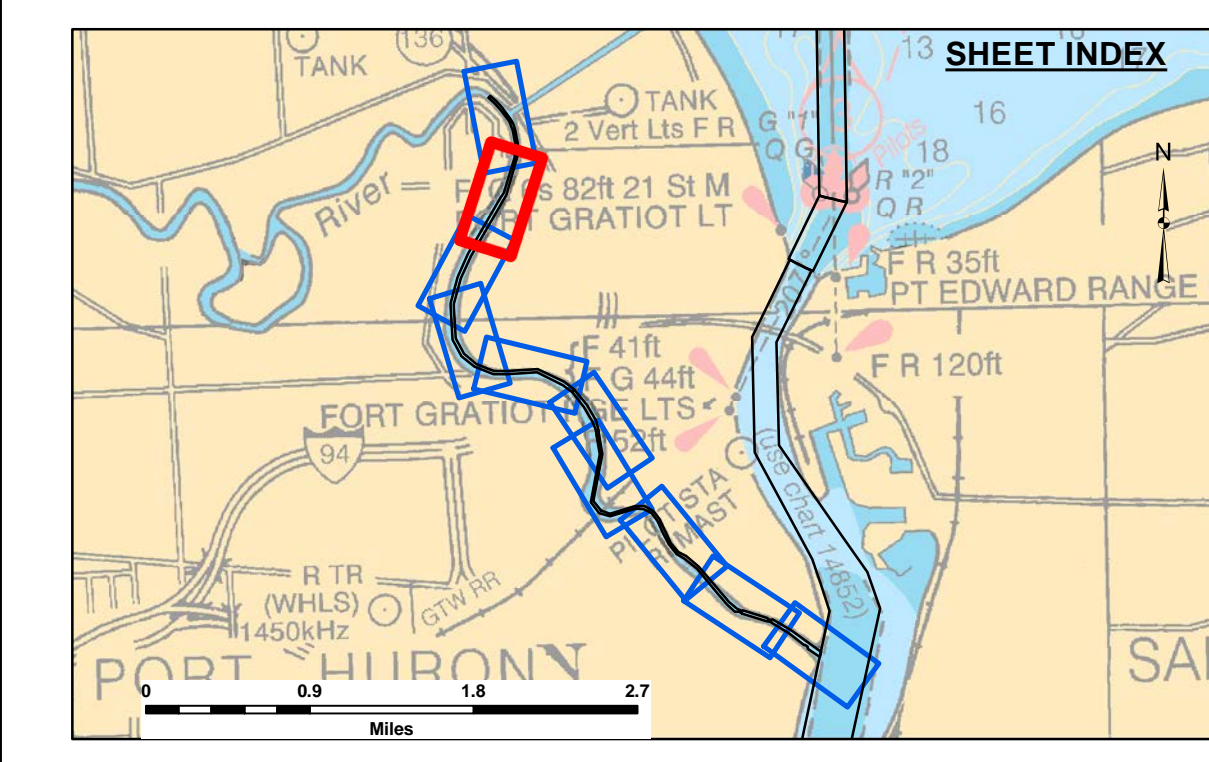
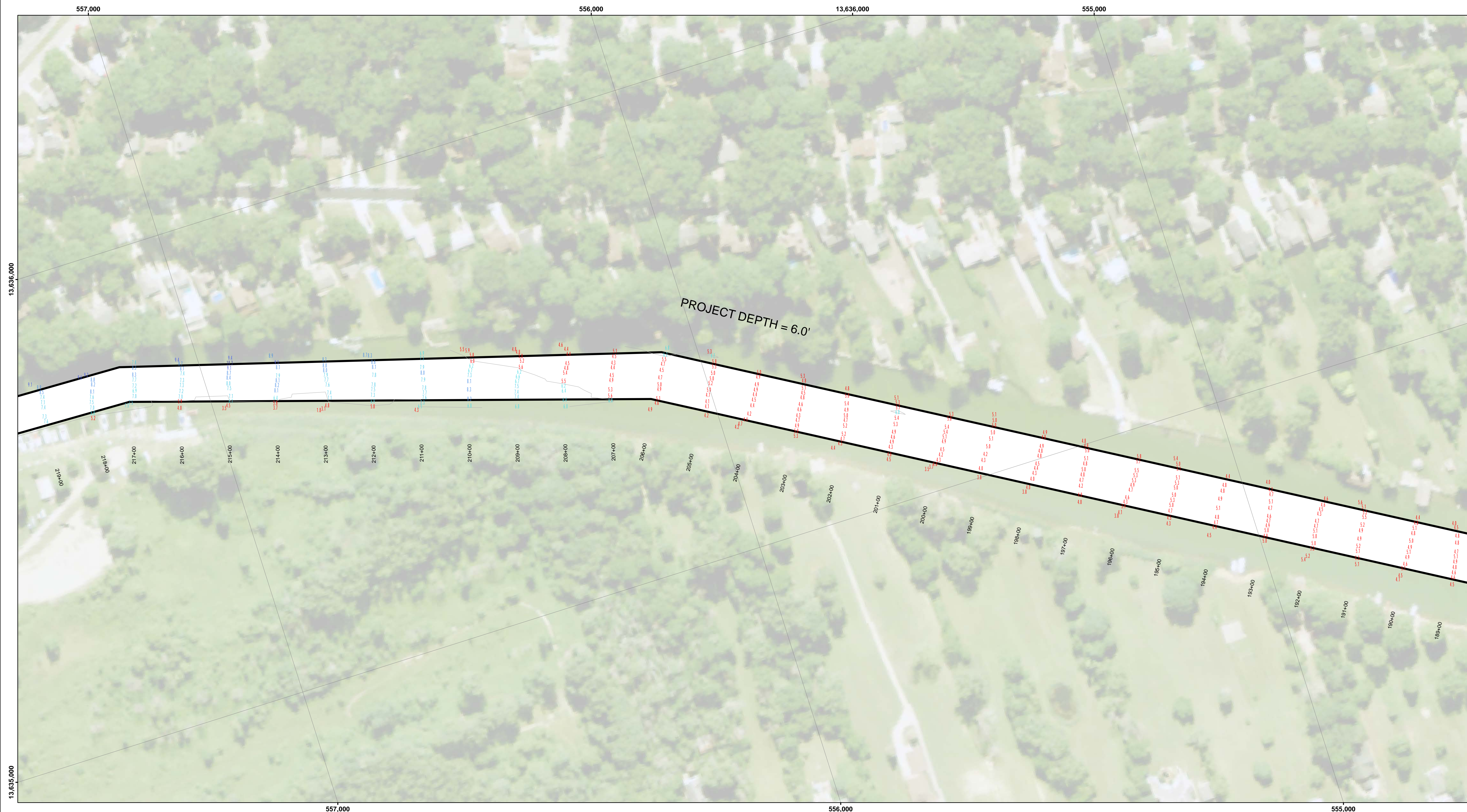
THE SOUNDINGS DEPICTED HEREIN ARE EXPRESSED IN U.S. SURVEY FEET AND TENTHS THEREOF AND ARE REFERENCED TO THE FOLLOWING DATUMS:
 HORIZONTAL: MICHIGAN STATE PLANE COORDINATE SYSTEM, MICHIGAN SOUTH ZONE #2113, NORTH AMERICAN DATUM (NAD) OF 1983.
 VERTICAL: INTERNATIONAL GREAT LAKES DATUM (IGLD) OF 1985.

THE ABOVE SURVEY WAS CONDUCTED USING THE U.S.A.C.E. SURVEY VESSEL LAUNCH 3053 EMPLOYING THE FOLLOWING COMPONENTS:
 POSITIONING: APPLANIX POS-MV4 W/MARINESTAR GNSS
 MOTION COMPENSATION: APPLANIX POS-MV4
 SONAR: ODOM CV-300
 SOFTWARE: HYPACK

TIDE CORRECTION VALUES REFERENCED FROM:
 NOAA TIDE GAGE "MOUTH OF THE BLACK RIVER, MI" (#9014090).

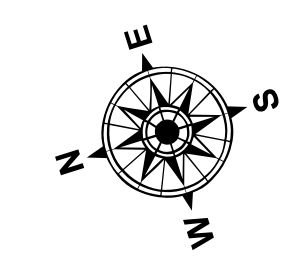
Black River, Port Huron, MI
Black River Port Huron
PH_01_BRV_20230427_CS
27 April 2023

Sheet Reference Number
1 of 10

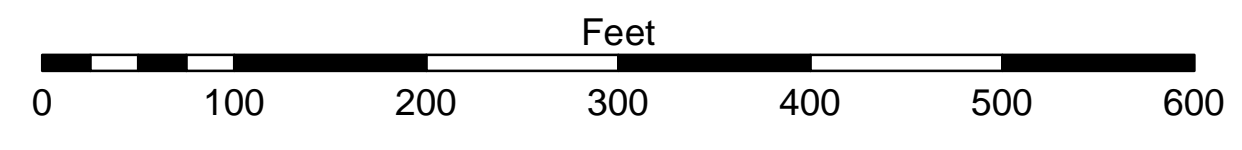


- LEGEND**
- Cable Submarine
 - - - Cable Overhead
 - Placement Area
 - ⊥ Beacon, General
 - Contour Lines
 - ▭ Channel Limits

- SOUNDING LEGEND**
- LESS THAN PROJECT DEPTH
 - PROJECT DEPTH
 - PROJECT DEPTH +1'
 - PROJECT DEPTH +2'
 - PROJECT DEPTH +3'
 - PROJECT DEPTH +4'
 - PROJECT DEPTH +5'



1 inch = 100 feet



NOTES: THE SOUNDINGS AND ASSOCIATED INFORMATION REPRESENTED HEREIN ARE THE RESULT OF SURVEYS MADE ON THE DATE AS INDICATED AND CAN ONLY BE CONSIDERED REPRESENTATIVE OF THE GENERAL CONDITIONS EXISTING AT THE TIME OF SURVEY.

THE SOUNDINGS DEPICTED HEREIN ARE EXPRESSED IN U.S. SURVEY FEET AND TENTHS THEREOF AND ARE REFERENCED TO THE FOLLOWING DATUMS:
 HORIZONTAL: MICHIGAN STATE PLANE COORDINATE SYSTEM, MICHIGAN SOUTH ZONE #2113, NORTH AMERICAN DATUM (NAD) OF 1983.
 VERTICAL: INTERNATIONAL GREAT LAKES DATUM (IGLD) OF 1985.

THE ABOVE SURVEY WAS CONDUCTED USING THE U.S.A.C.E. SURVEY VESSEL LAUNCH 3053 EMPLOYING THE FOLLOWING COMPONENTS:

POSITIONING: APPLANIX POS-MV4 W/MARINESTAR GNSS
 MOTION COMPENSATION: APPLANIX POS-MV4
 SONAR: ODOM CV-300
 SOFTWARE: HYPACK

TIDE CORRECTION VALUES REFERENCED FROM:
 NOAA TIDE GAGE "MOUTH OF THE BLACK RIVER, MI" (#9014090).

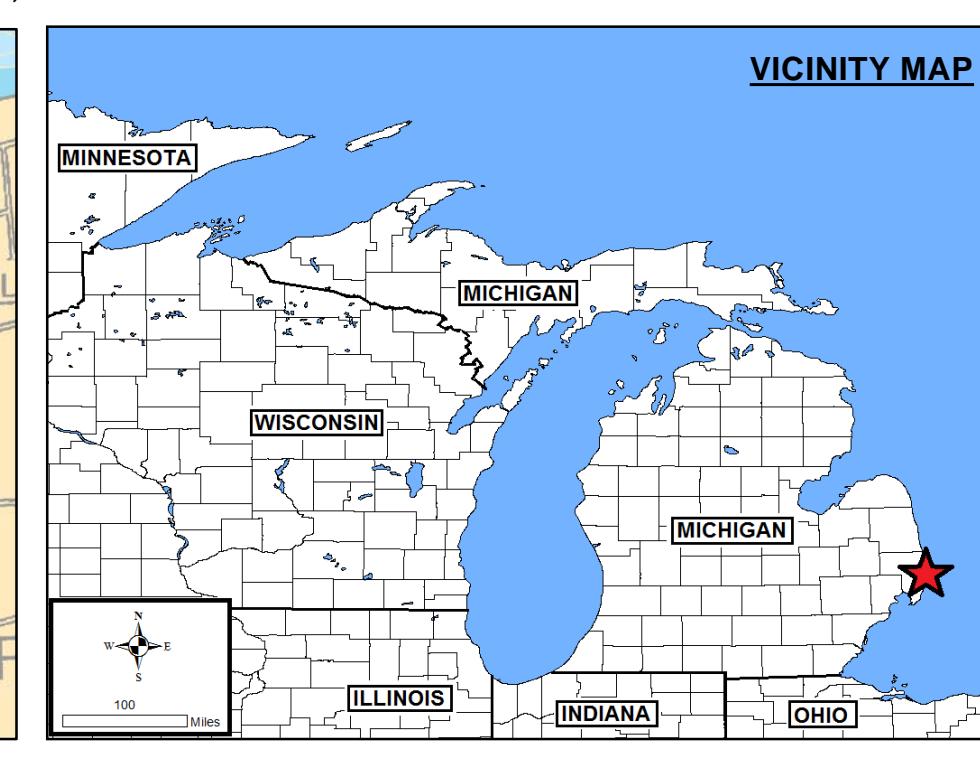
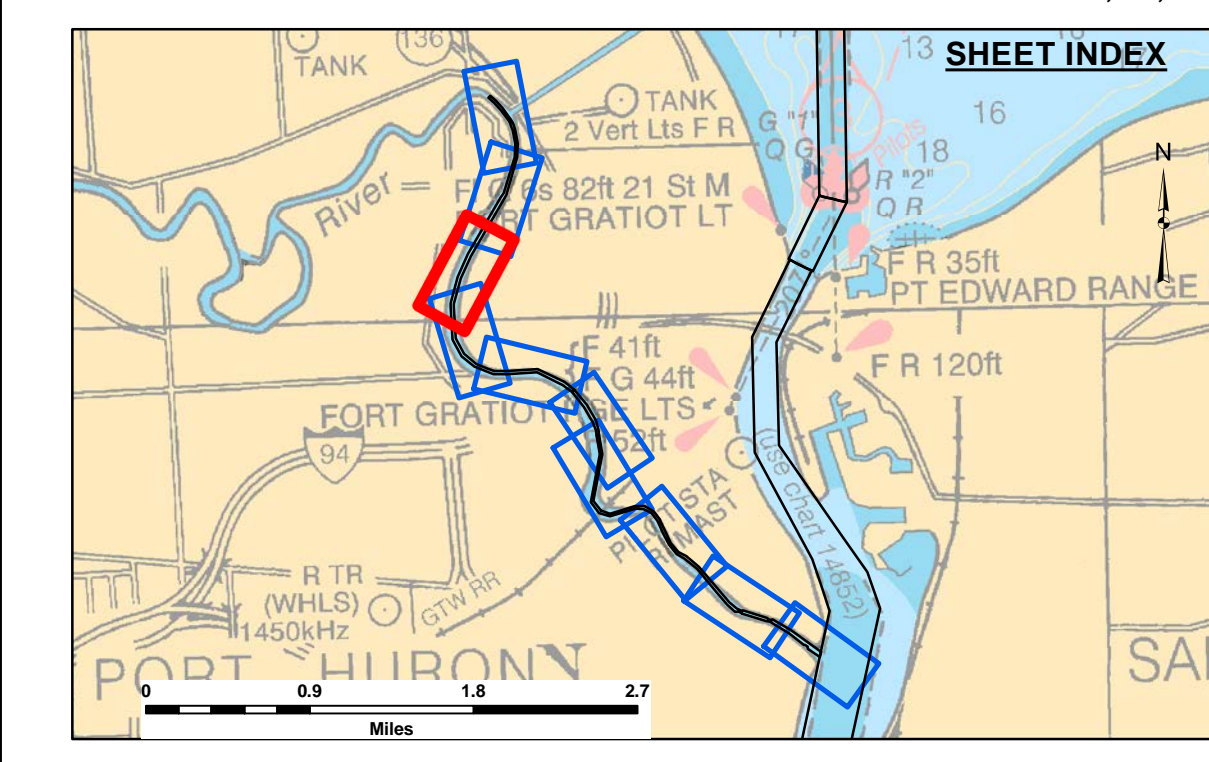
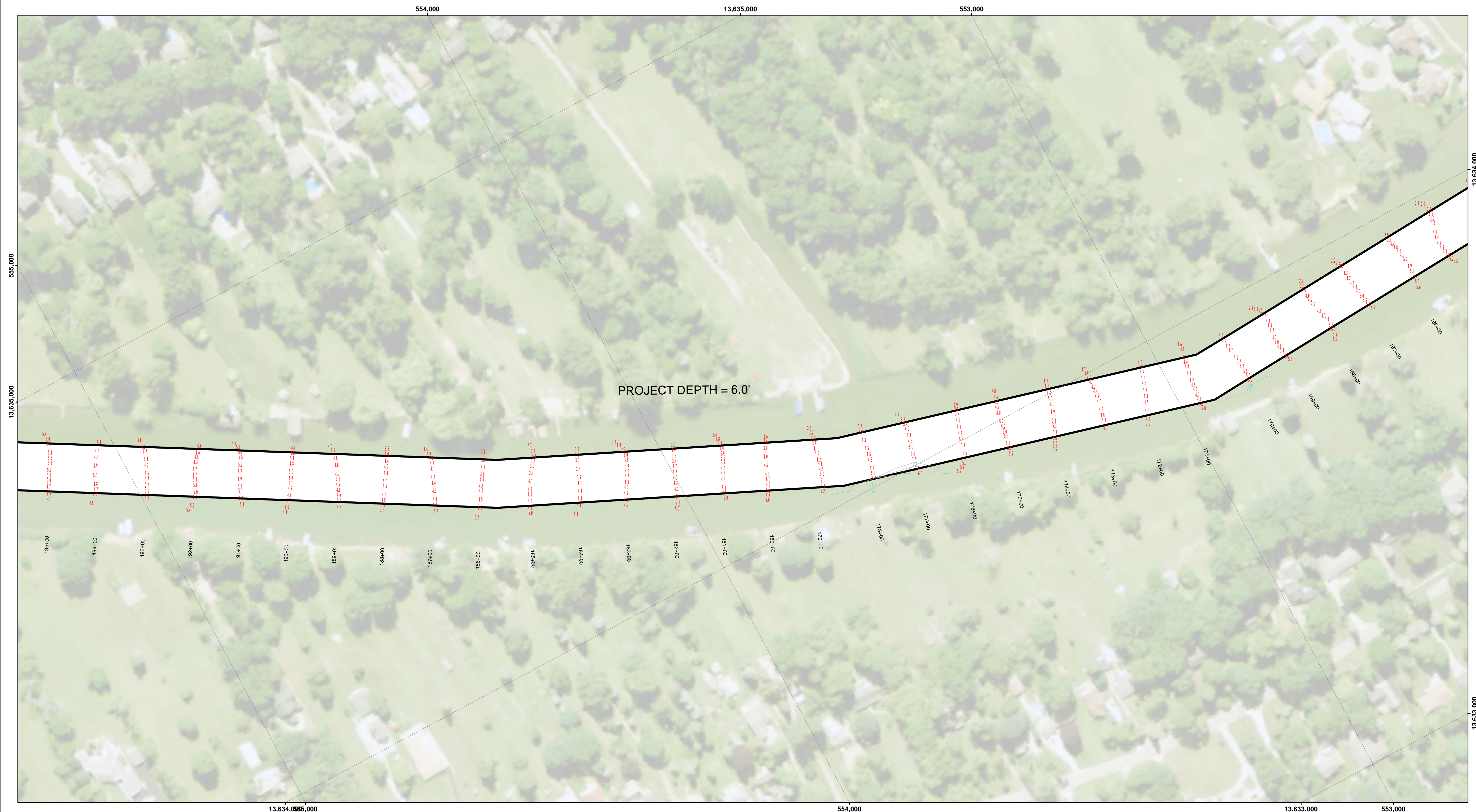


DISCLAIMER: The United States Government furnishes these data and the recipient accepts and uses them with the express understanding that the data are not to be used for any purpose other than that for which they were provided. The United States Government makes no warranty, expressed or implied, concerning the accuracy, completeness, reliability, usability or suitability for any particular purpose of the data. The recipient agrees to hold the United States Government harmless under no liability whatsoever to any person by reason of any use made thereof. These data belong to the Government. Therefore the recipient may not transfer, disseminate, or otherwise use these data for other than its intended purpose.

U.S. ARMY CORPS OF ENGINEERS DETROIT DISTRICT		
Submitted:	Surveyed By:	
Recommended:	Plotted By:	
Approved:	Chief, Survey Section	
	Chief, Technical Services	

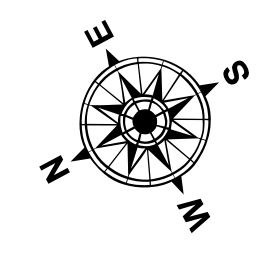
Black River, Port Huron, MI
Black River Port Huron
PH_01_BRV_20230427_CS
27 April 2023

Sheet Reference Number
2 of 10

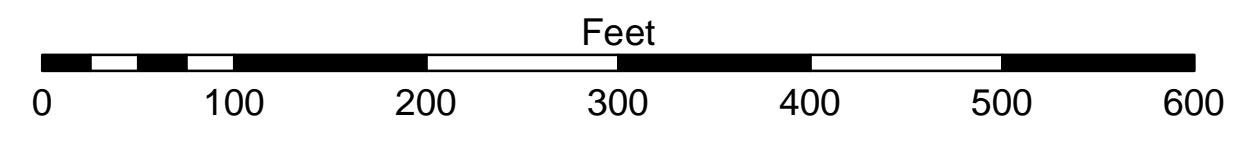


- LEGEND**
- Cable Submarine
 - - - Cable Overhead
 - Placement Area
 - ⊥ Beacon, General
 - Contour Lines
 - ▭ Channel Limits

- SOUNDING LEGEND**
- LESS THAN PROJECT DEPTH
 - PROJECT DEPTH
 - PROJECT DEPTH +1'
 - PROJECT DEPTH +2'
 - PROJECT DEPTH +3'
 - PROJECT DEPTH +4'
 - PROJECT DEPTH +5'



1 inch = 100 feet



NOTES: THE SOUNDINGS AND ASSOCIATED INFORMATION REPRESENTED HEREIN ARE THE RESULT OF SURVEYS MADE ON THE DATE AS INDICATED AND CAN ONLY BE CONSIDERED REPRESENTATIVE OF THE GENERAL CONDITIONS EXISTING AT THE TIME OF SURVEY.

THE SOUNDINGS DEPICTED HEREIN ARE EXPRESSED IN U.S. SURVEY FEET AND TENTHS THEREOF AND ARE REFERENCED TO THE FOLLOWING DATUMS:
 HORIZONTAL: MICHIGAN STATE PLANE COORDINATE SYSTEM, MICHIGAN SOUTH ZONE #2113, NORTH AMERICAN DATUM (NAD) OF 1983.
 VERTICAL: INTERNATIONAL GREAT LAKES DATUM (IGLD) OF 1985.

THE ABOVE SURVEY WAS CONDUCTED USING THE U.S.A.C.E. SURVEY VESSEL LAUNCH 3053 EMPLOYING THE FOLLOWING COMPONENTS:

POSITIONING: APPLANIX POS-MV4 W/MARINESTAR GNSS
 MOTION COMPENSATION: APPLANIX POS-MV4
 SONAR: ODOM CV-300
 SOFTWARE: HYPACK

TIDE CORRECTION VALUES REFERENCED FROM:
 NOAA TIDE GAGE "MOUTH OF THE BLACK RIVER, MI" (#9014090).

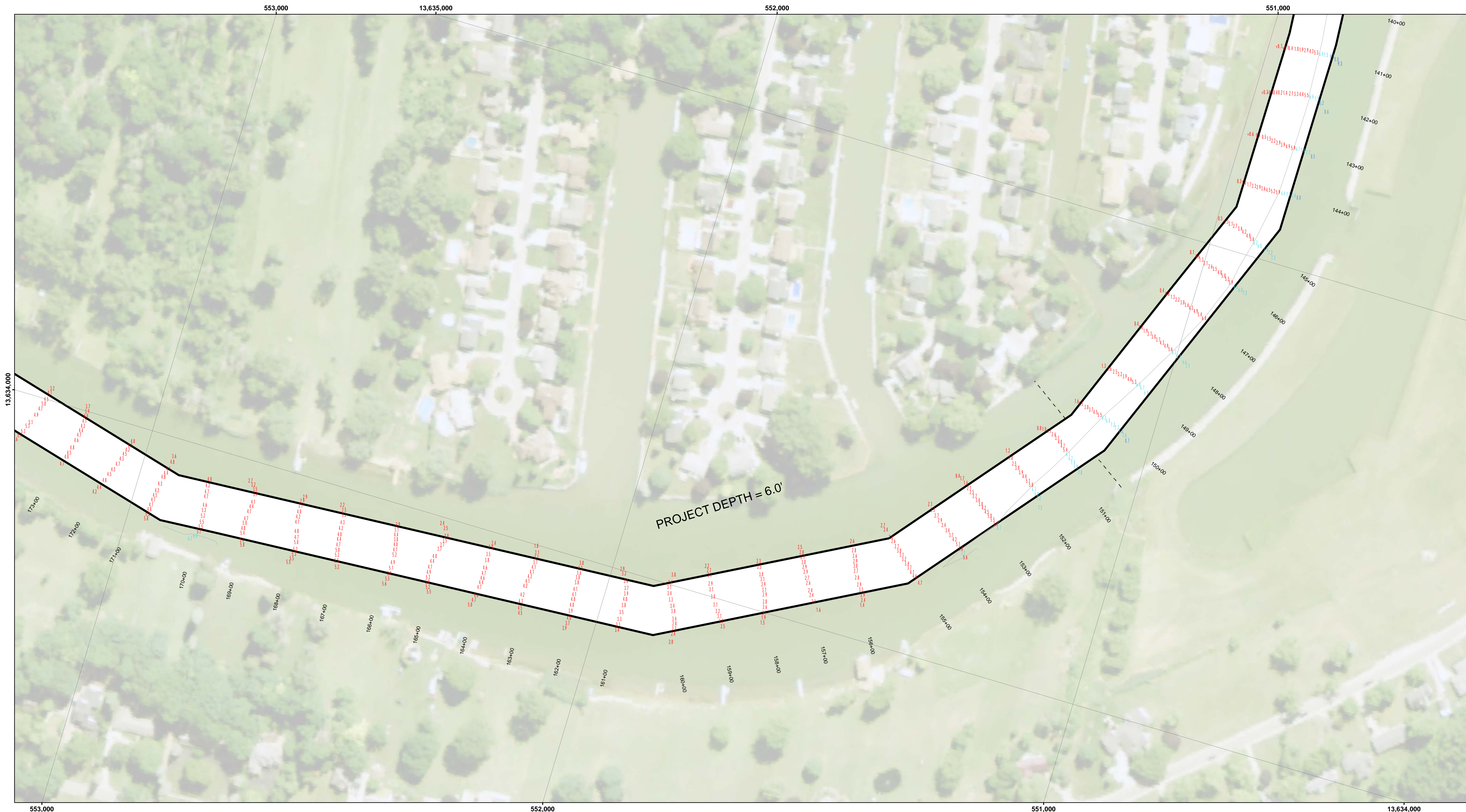


DISCLAIMER: The United States Government furnishes these data and the recipient accepts and uses them with the express understanding that the United States Government makes no warranty, expressed or implied, concerning the accuracy, completeness, reliability, usability or suitability for any particular purpose of the data. The recipient shall be responsible for the accuracy of any of the application of the data for other than its intended purpose. The recipient may not transfer these data to others without also transferring the Disclaimer.

U.S. ARMY CORPS OF ENGINEERS DETROIT DISTRICT		
Submitted:	Surveyed By:	
Recommended:	Plotted By:	
Approved:	Chief, Technical Services	

Black River, Port Huron, MI
Black River, Port Huron
PH_01_BRV_20230427_CS
27 April 2023

Sheet Reference Number
3 of 10

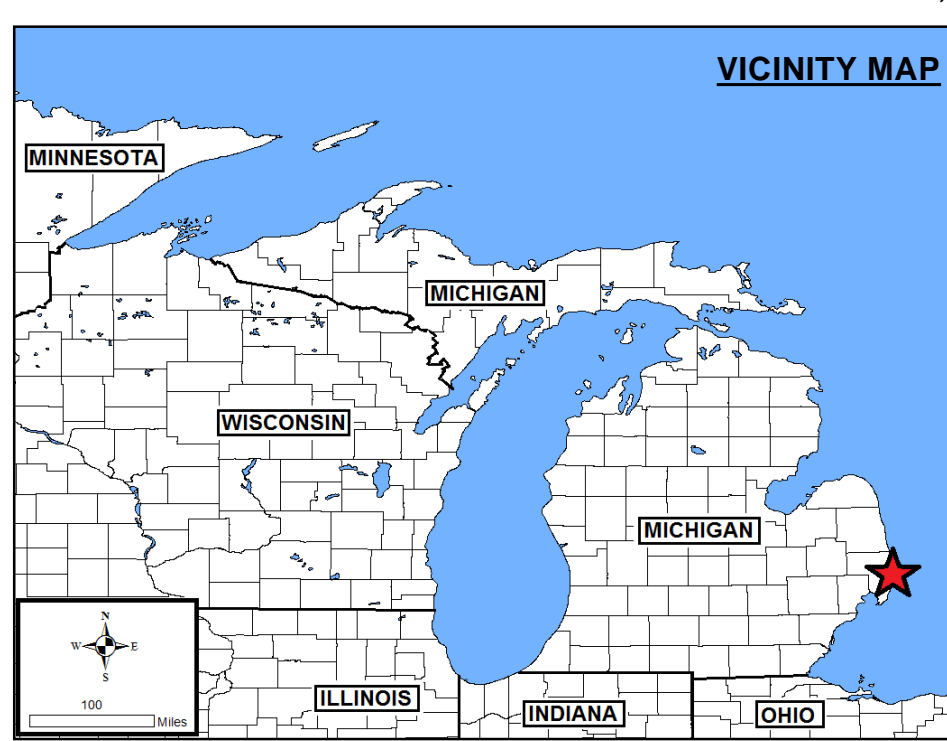
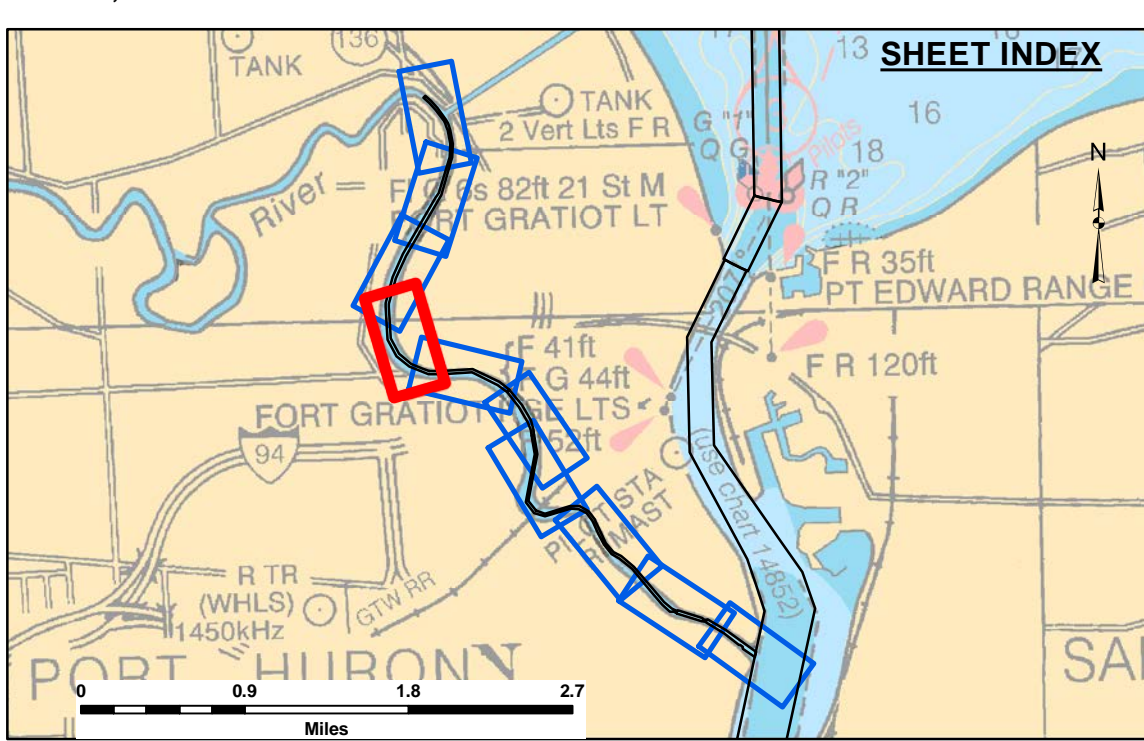


Disclaimer: The data represented by the results of data collection and processing for a specific US Army Corps of Engineers activity and indicates the general existing conditions. The user is responsible for the results of any of the application of the data for other than its intended purpose.

Access Constraints: The United States Government furnishes these data and the recipient accepts and uses them with the express understanding that the data are not to be used for any purpose other than that for which they were provided. These data belong to the Government. Therefore the recipient may not transfer these data to others without also transferring the Disclaimer.

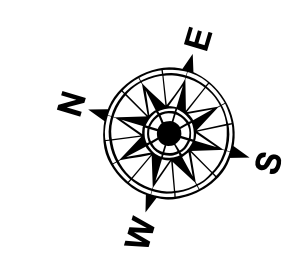
U.S. ARMY CORPS OF ENGINEERS DETROIT DISTRICT		
Submitted:	Surveyed By:	
Recommended:	Plotted By:	
Approved:	Chief, Survey Station	
	Chief, Technical Services	

Black River, Port Huron, MI
Black River Port Huron
PH_01_BRV_20230427_CS
27 April 2023

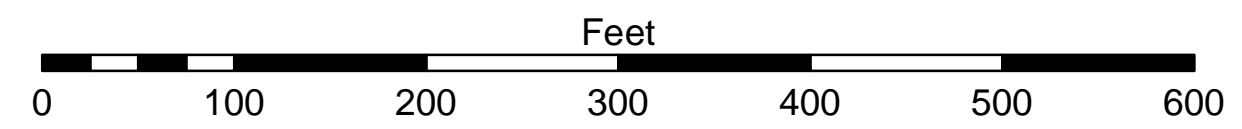


- LEGEND**
- Cable Submarine
 - - - Cable Overhead
 - Placement Area
 - ⊥ Beacon, General
 - Contour Lines
 - ▭ Channel Limits

- SOUNDING LEGEND**
- LESS THAN PROJECT DEPTH
 - PROJECT DEPTH
 - PROJECT DEPTH +1'
 - PROJECT DEPTH +2'
 - PROJECT DEPTH +3'
 - PROJECT DEPTH +4'
 - PROJECT DEPTH +5'



1 inch = 100 feet



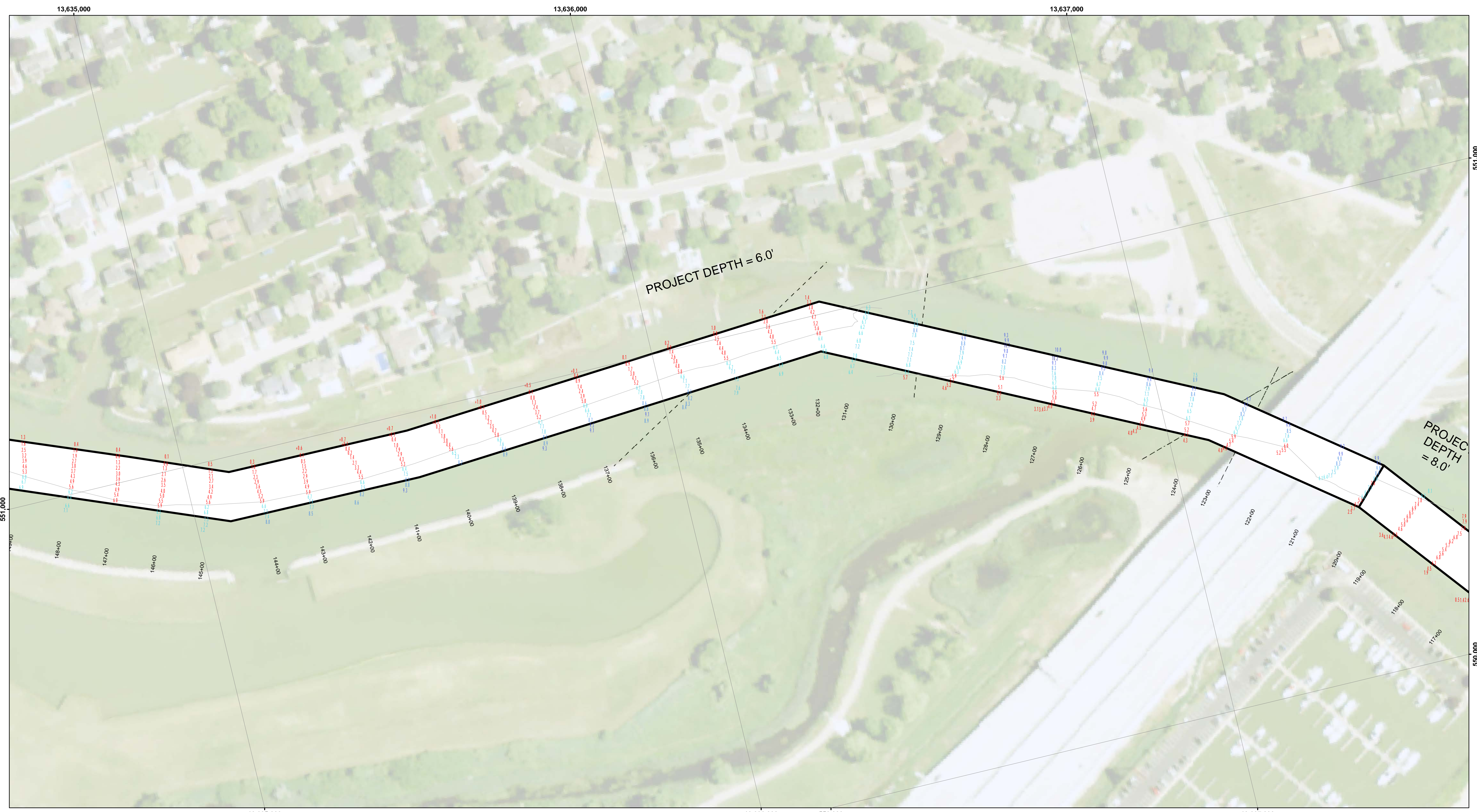
NOTES: THE SOUNDINGS AND ASSOCIATED INFORMATION REPRESENTED HEREIN ARE THE RESULT OF SURVEYS MADE ON THE DATE AS INDICATED AND CAN ONLY BE CONSIDERED REPRESENTATIVE OF THE GENERAL CONDITIONS EXISTING AT THE TIME OF SURVEY.

THE SOUNDINGS DEPICTED HEREIN ARE EXPRESSED IN U.S. SURVEY FEET AND TENTHS THEREOF AND ARE REFERENCED TO THE FOLLOWING DATUMS:
 HORIZONTAL: MICHIGAN STATE PLANE COORDINATE SYSTEM, MICHIGAN SOUTH ZONE #2113, NORTH AMERICAN DATUM (NAD) OF 1983.
 VERTICAL: INTERNATIONAL GREAT LAKES DATUM (IGLD) OF 1985.

THE ABOVE SURVEY WAS CONDUCTED USING THE U.S.A.C.E. SURVEY VESSEL LAUNCH 3053 EMPLOYING THE FOLLOWING COMPONENTS:
 POSITIONING: APPLANIX POS-MV4 W/MARINESTAR GNSS
 MOTION COMPENSATION: APPLANIX POS-MV4
 SONAR: ODOM CV-300
 SOFTWARE: HYPACK

TIDE CORRECTION VALUES REFERENCED FROM:
 NOAA TIDE GAGE "MOUTH OF THE BLACK RIVER, MI" (#9014090).

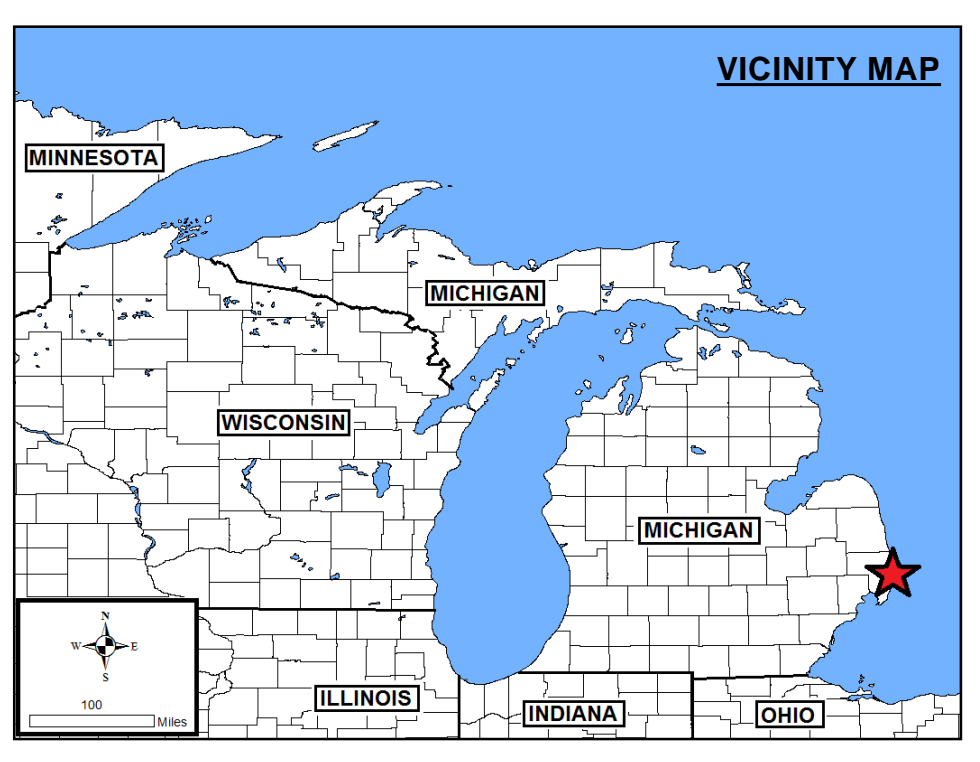
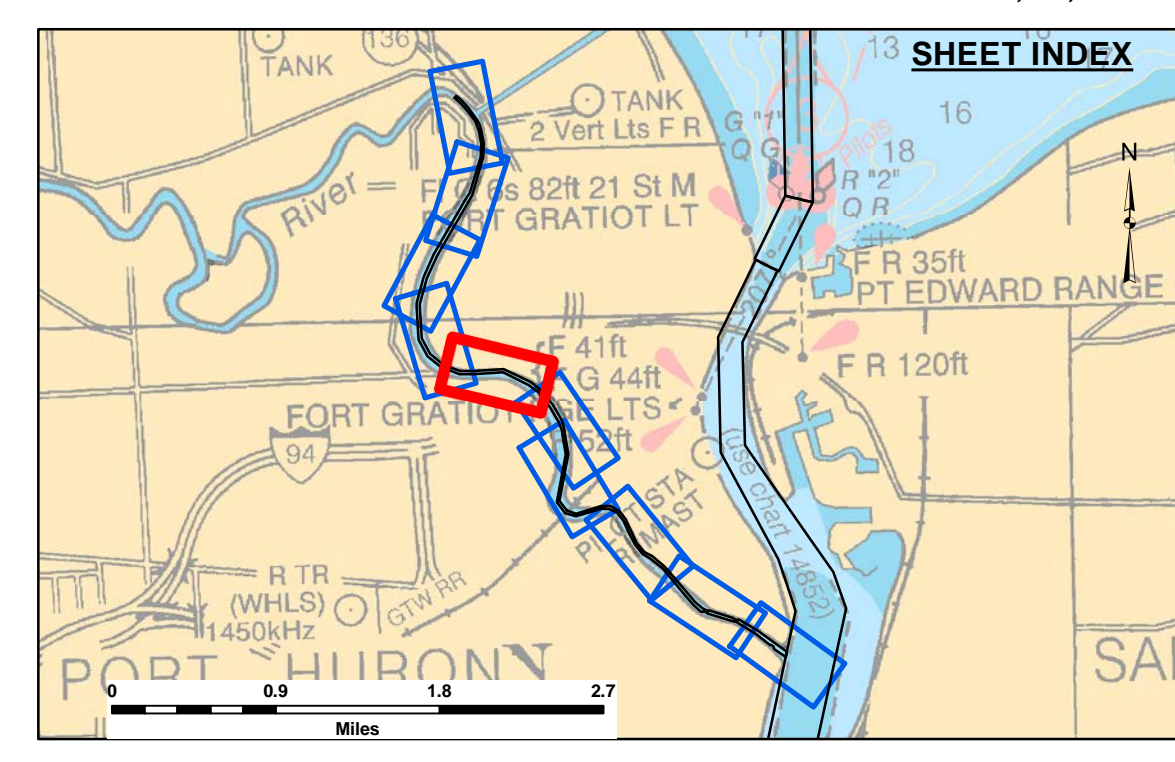
Sheet Reference Number
4 of 10



Disclaimer: The data represents the results of data collection/processing for a specific US Army Corps of Engineers activity and indicates the general existing conditions. The user is responsible for the results of any of the application of the data for other than its intended purpose.

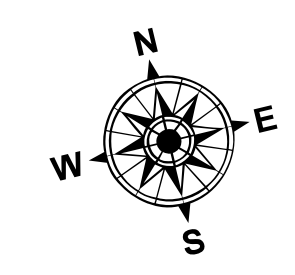
Access Constraints: The United States Government furnishes these data and the recipient accepts and uses them with the express understanding that they are not to be distributed, reproduced, or implied concerning the accuracy, completeness, reliability, usability or suitability for any particular purpose of the recipient. These data are provided to the recipient under no liability whatsoever to any person by reason of any use made thereof. These data belong to the Government. Therefore the recipient may not transfer these data to others without also transferring this Disclaimer.

U.S. ARMY CORPS OF ENGINEERS DETROIT DISTRICT		
Submitted:	Surveyed By:	Checked By:
Recommended:	Plotted By:	
Approved:	Chief, Survey Section	Chief, Technical Services

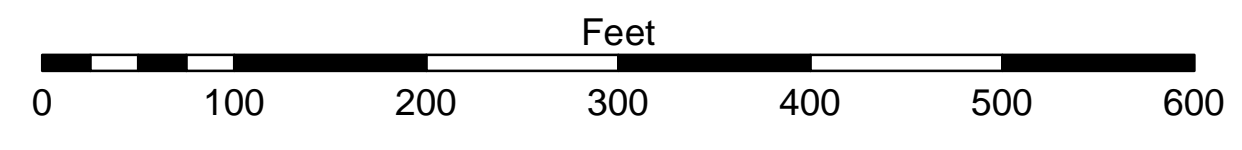


- LEGEND**
- Cable Submarine
 - - - Cable Overhead
 - Placement Area
 - ⊥ Beacon, General
 - Contour Lines
 - ▭ Channel Limits

- SOUNDING LEGEND**
- Red: LESS THAN PROJECT DEPTH
 - Light Blue: PROJECT DEPTH
 - Medium Blue: PROJECT DEPTH +1'
 - Dark Blue: PROJECT DEPTH +2'
 - Very Dark Blue: PROJECT DEPTH +3'
 - Black: PROJECT DEPTH +4'
 - Dark Purple: PROJECT DEPTH +5'



1 inch = 100 feet



NOTES: THE SOUNDINGS AND ASSOCIATED INFORMATION REPRESENTED HEREIN ARE THE RESULT OF SURVEYS MADE ON THE DATE AS INDICATED AND CAN ONLY BE CONSIDERED REPRESENTATIVE OF THE GENERAL CONDITIONS EXISTING AT THE TIME OF SURVEY.

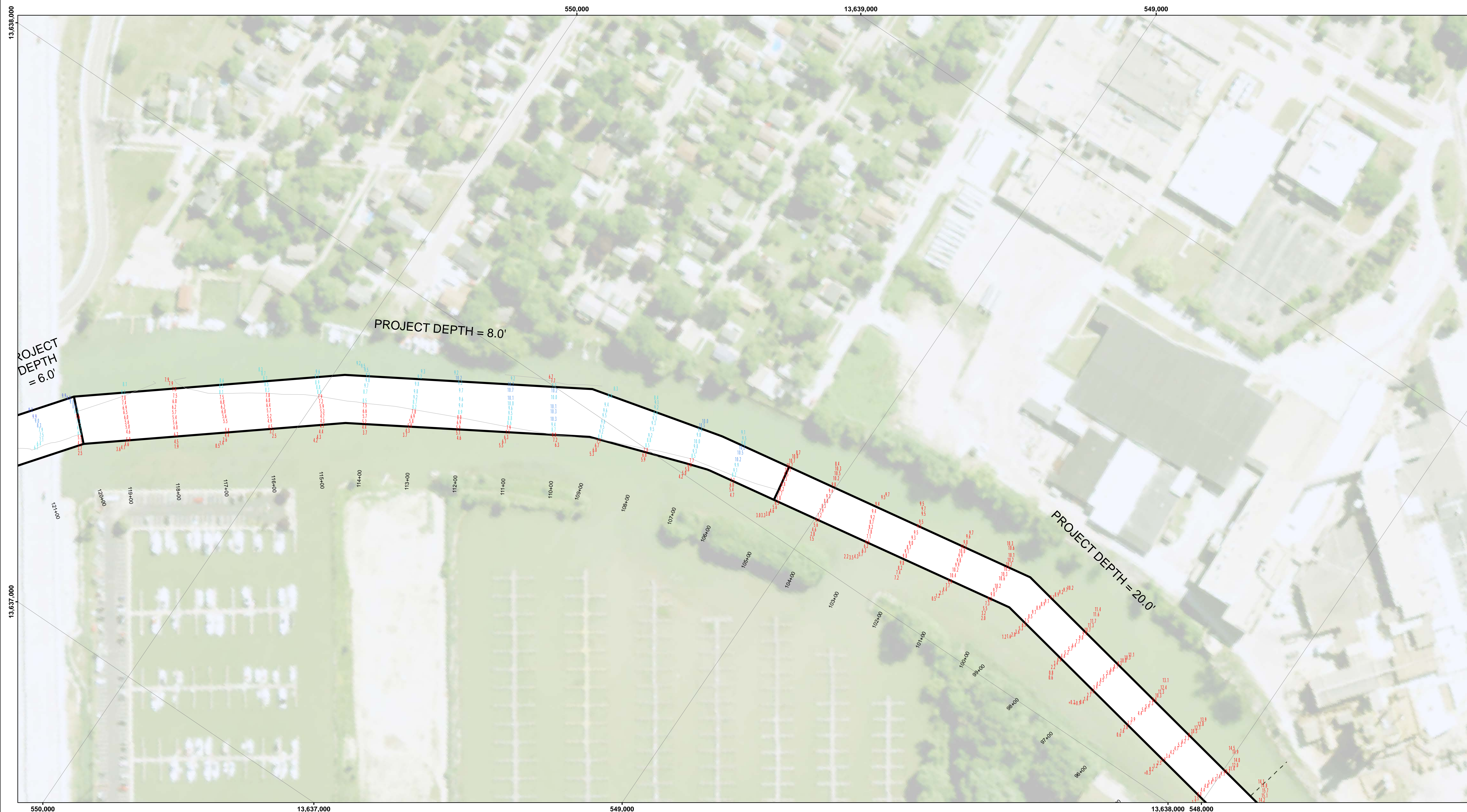
THE SOUNDINGS DEPICTED HEREIN ARE EXPRESSED IN U.S. SURVEY FEET AND TENTHS THEREOF AND ARE REFERENCED TO THE FOLLOWING DATUMS:
 HORIZONTAL: MICHIGAN STATE PLANE COORDINATE SYSTEM, MICHIGAN SOUTH ZONE #2113, NORTH AMERICAN DATUM (NAD) OF 1983.
 VERTICAL: INTERNATIONAL GREAT LAKES DATUM (IGLD) OF 1985.

THE ABOVE SURVEY WAS CONDUCTED USING THE U.S.A.C.E. SURVEY VESSEL LAUNCH 3053 EMPLOYING THE FOLLOWING COMPONENTS:
 POSITIONING: APPLANIX POS-MV4 W/MARINESTAR GNSS
 MOTION COMPENSATION: APPLANIX POS-MV4
 SONAR: ODOM CV-300
 SOFTWARE: HYPACK

TIDE CORRECTION VALUES REFERENCED FROM:
 NOAA TIDE GAGE "MOUTH OF THE BLACK RIVER, MI" (#9014090).

Black River, Port Huron, MI
Black River Port Huron
PH_01_BRV_20230427_CS
27 April 2023

Sheet Reference Number
5 of 10

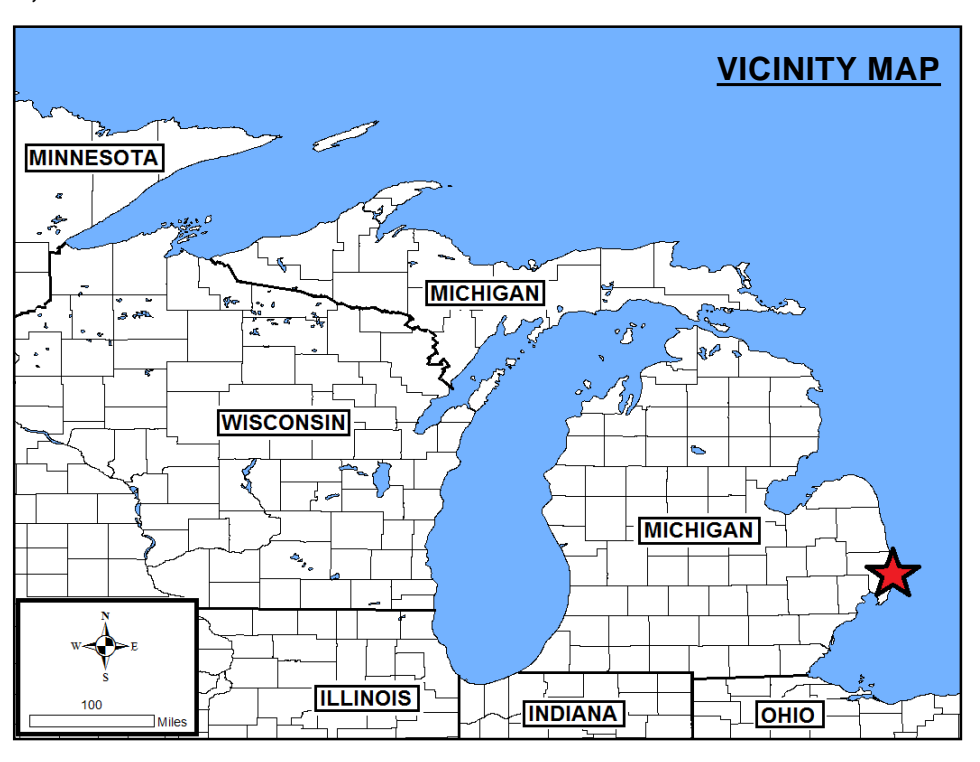
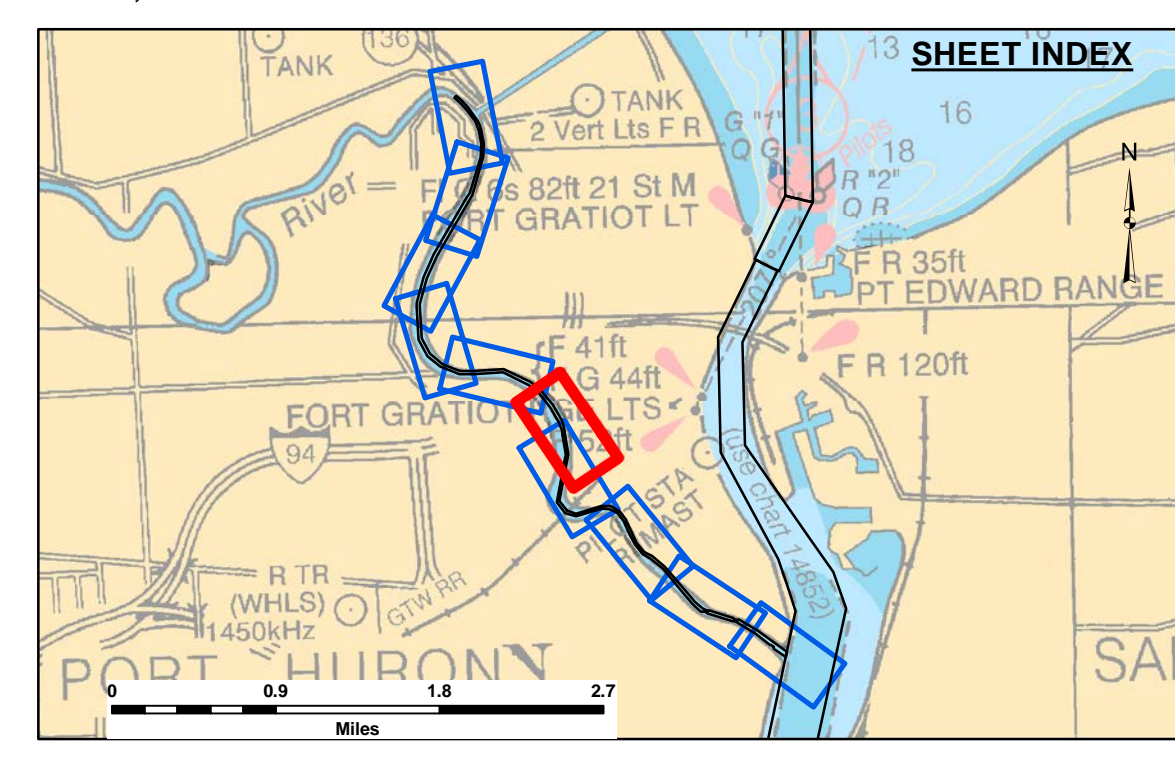


Disclaimer: The data represented by the results of data collection is for informational purposes only. The data is not intended for use in any other manner. The user is responsible for the results of any application of the data for other than its intended purpose.

Access Constraints: The United States Government furnishes these data and the recipient accepts and uses them with the express understanding that the data are not to be used for any purpose other than that for which they were provided. The recipient may not transfer these data to others without also transferring this Disclaimer.

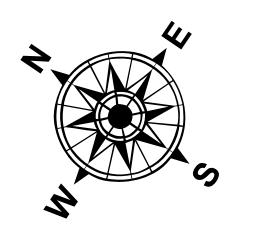
U.S. ARMY CORPS OF ENGINEERS DETROIT DISTRICT		
Submitted:	Surveyed By:	
Recommended:	Plotted By:	
Approved:	Chief, Survey Section	
	Chief, Technical Services	

Black River, Port Huron, MI
Black River, Port Huron
PH_01_BRV_20230427_CS
27 April 2023

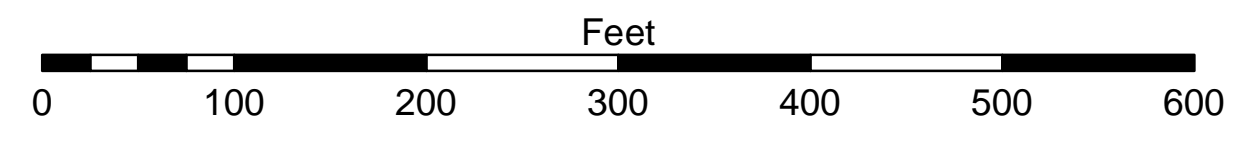


- LEGEND**
- Cable Submarine
 - - - Cable Overhead
 - Placement Area
 - ⊥ Beacon, General
 - Contour Lines
 - ▭ Channel Limits

- SOUNDING LEGEND**
- LESS THAN PROJECT DEPTH
 - PROJECT DEPTH
 - PROJECT DEPTH +1'
 - PROJECT DEPTH +2'
 - PROJECT DEPTH +3'
 - PROJECT DEPTH +4'
 - PROJECT DEPTH +5'



1 inch = 100 feet



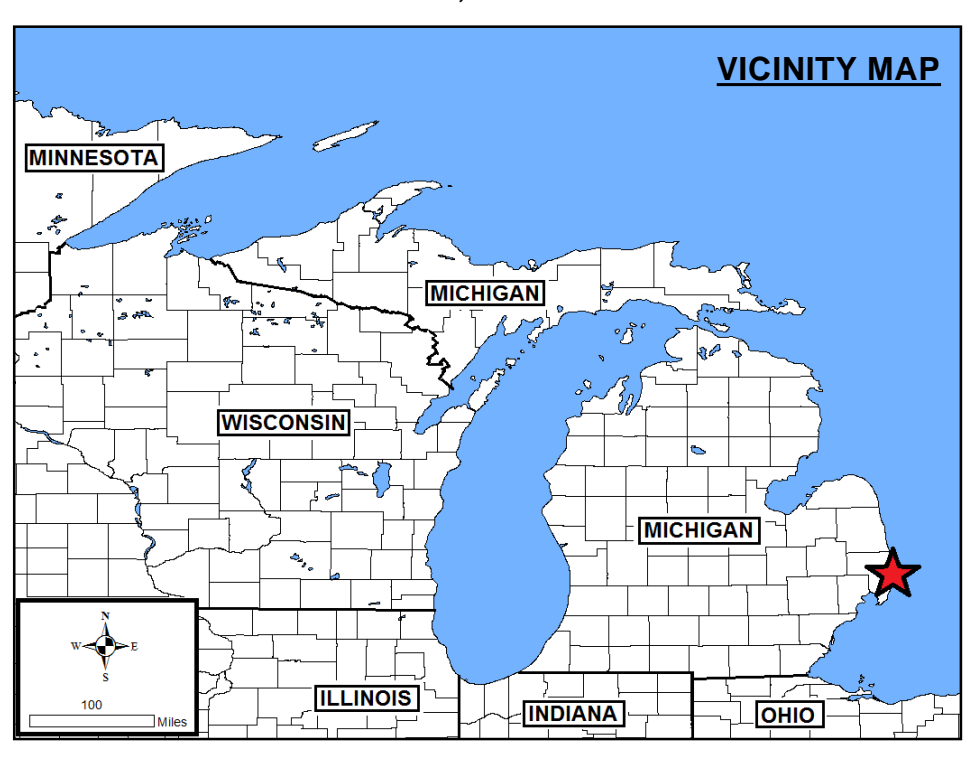
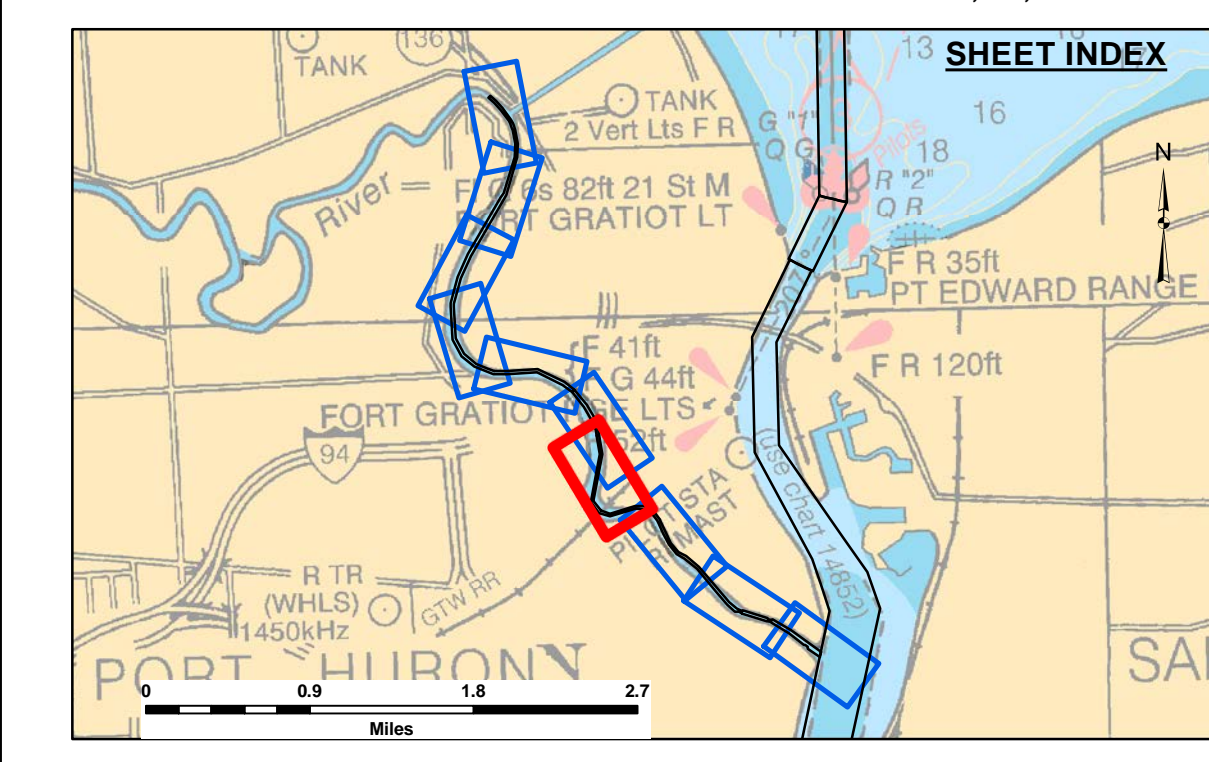
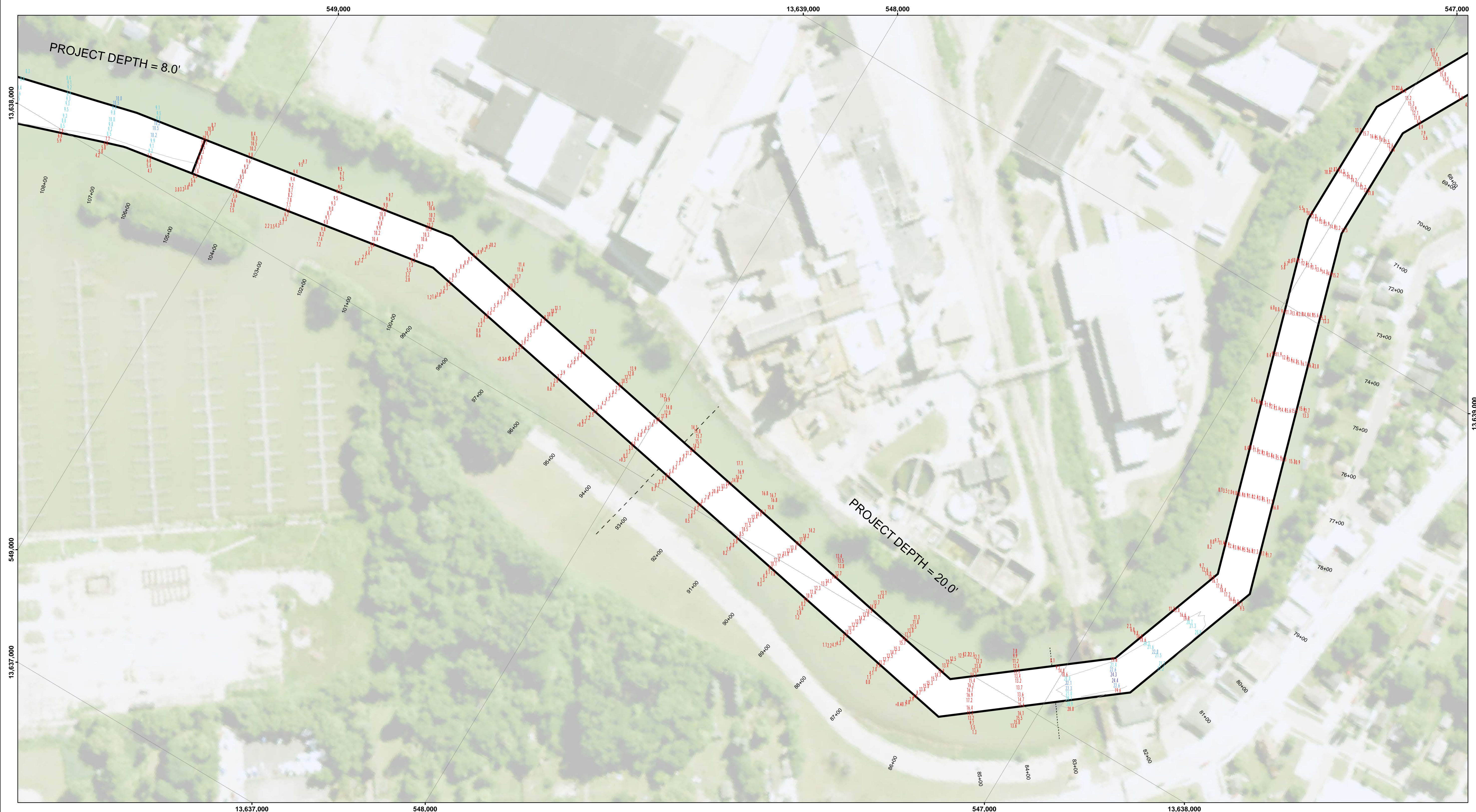
NOTES: THE SOUNDINGS AND ASSOCIATED INFORMATION REPRESENTED HEREIN ARE THE RESULT OF SURVEYS MADE ON THE DATE AS INDICATED AND CAN ONLY BE CONSIDERED REPRESENTATIVE OF THE GENERAL CONDITIONS EXISTING AT THE TIME OF SURVEY.

THE SOUNDINGS DEPICTED HEREIN ARE EXPRESSED IN U.S. SURVEY FEET AND TENTHS THEREOF AND ARE REFERENCED TO THE FOLLOWING DATUMS:
 HORIZONTAL: MICHIGAN STATE PLANE COORDINATE SYSTEM, MICHIGAN SOUTH ZONE #2113, NORTH AMERICAN DATUM (NAD) OF 1983.
 VERTICAL: INTERNATIONAL GREAT LAKES DATUM (IGLD) OF 1985.

THE ABOVE SURVEY WAS CONDUCTED USING THE U.S.A.C.E. SURVEY VESSEL LAUNCH 3053 EMPLOYING THE FOLLOWING COMPONENTS:
 POSITIONING: APPLANIX POS-MV4 W/MARINESTAR GNSS
 MOTION COMPENSATION: APPLANIX POS-MV4
 SONAR: ODOM CV-300
 SOFTWARE: HYPACK

TIDE CORRECTION VALUES REFERENCED FROM:
 NOAA TIDE GAGE "MOUTH OF THE BLACK RIVER, MI" (#9014090).

Sheet Reference Number
6 of 10

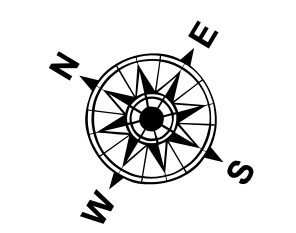


LEGEND

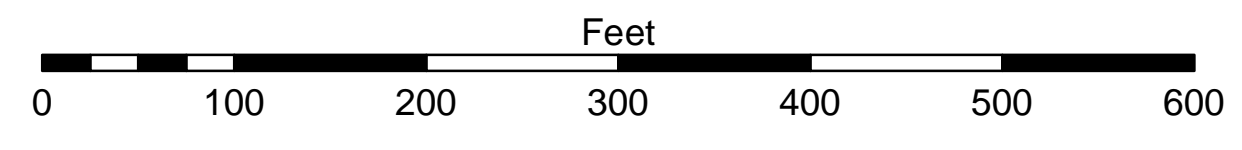
- Cable Submarine
- - - Cable Overhead
- Placement Area
- ⊥ Beacon, General
- Contour Lines
- ▭ Channel Limits

SOUNDING LEGEND

- LESS THAN PROJECT DEPTH
- PROJECT DEPTH
- PROJECT DEPTH +1'
- PROJECT DEPTH +2'
- PROJECT DEPTH +3'
- PROJECT DEPTH +4'
- PROJECT DEPTH +5'



1 inch = 100 feet



NOTES: THE SOUNDINGS AND ASSOCIATED INFORMATION REPRESENTED HEREIN ARE THE RESULT OF SURVEYS MADE ON THE DATE AS INDICATED AND CAN ONLY BE CONSIDERED REPRESENTATIVE OF THE GENERAL CONDITIONS EXISTING AT THE TIME OF SURVEY.

THE SOUNDINGS DEPICTED HEREIN ARE EXPRESSED IN U.S. SURVEY FEET AND TENTHS THEREOF AND ARE REFERENCED TO THE FOLLOWING DATUMS:
 HORIZONTAL: MICHIGAN STATE PLANE COORDINATE SYSTEM, MICHIGAN SOUTH ZONE #2113, NORTH AMERICAN DATUM (NAD) OF 1983.
 VERTICAL: INTERNATIONAL GREAT LAKES DATUM (IGLD) OF 1985.

THE ABOVE SURVEY WAS CONDUCTED USING THE U.S.A.C.E. SURVEY VESSEL LAUNCH 3053 EMPLOYING THE FOLLOWING COMPONENTS:

POSITIONING: APPLANIX POS-MV4 W/MARINESTAR GNSS
 MOTION COMPENSATION: APPLANIX POS-MV4
 SONAR: ODOM CV-300
 SOFTWARE: HYPACK

TIDE CORRECTION VALUES REFERENCED FROM:
 NOAA TIDE GAGE "MOUTH OF THE BLACK RIVER, MI" (#9014090).



DISCLAIMER: The United States Government furnishes these data and the recipient accepts and uses them with the express understanding that the United States Government makes no warranty, expressed or implied, concerning the accuracy, completeness, reliability, usability or suitability for any particular purpose of the data. The recipient shall be responsible for the accuracy of any of the application of the data for other than its intended purpose.

ACCESS RESTRICTIONS: The United States Government furnishes these data and the recipient accepts and uses them with the express understanding that the United States Government makes no warranty, expressed or implied, concerning the accuracy, completeness, reliability, usability or suitability for any particular purpose of the data. The recipient shall be responsible for the accuracy of any of the application of the data for other than its intended purpose.

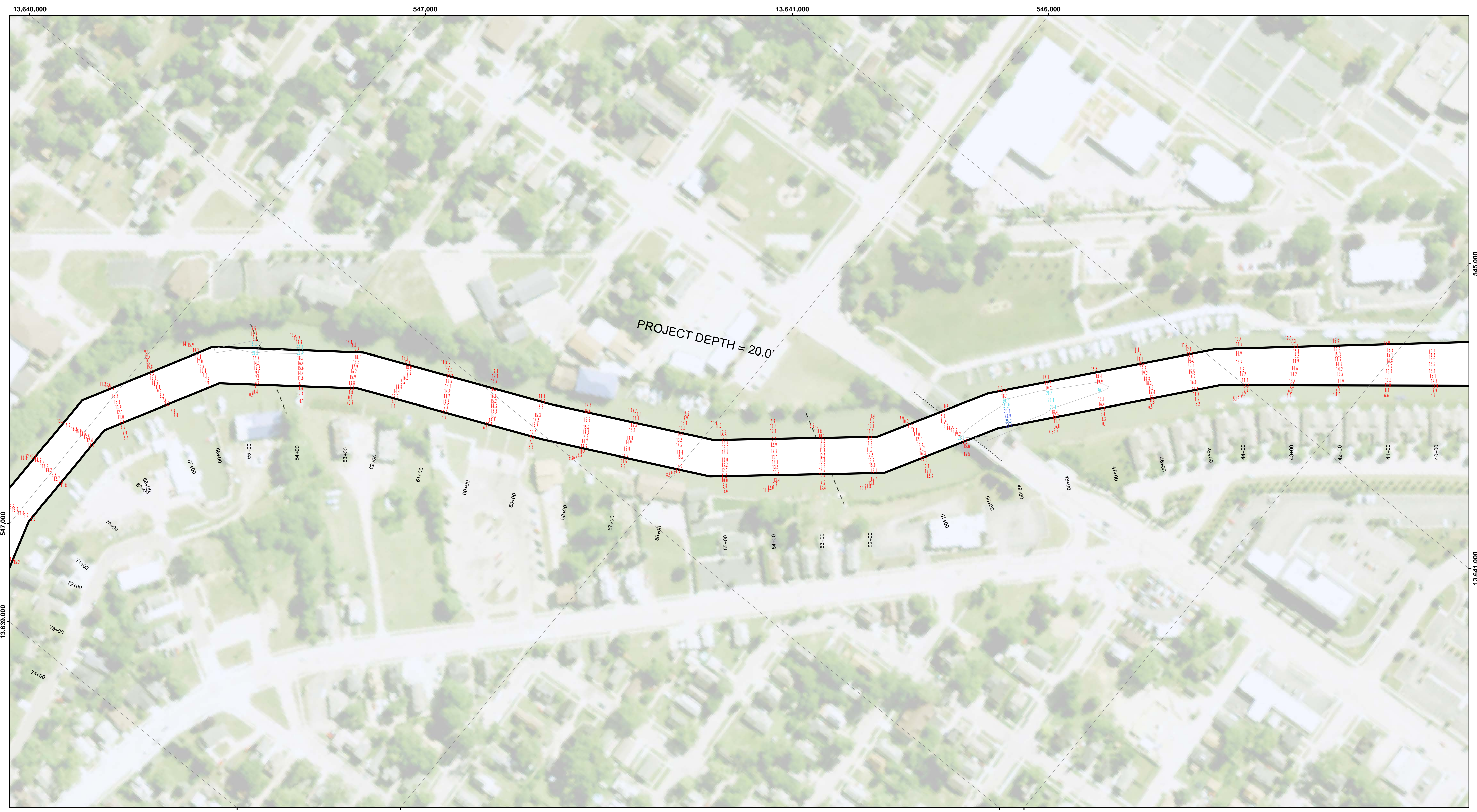
U.S. ARMY CORPS OF ENGINEERS
DETROIT DISTRICT

Submitted:	Surveyed By:
Recommended:	Plotted By:
Approved:	Checked By:

Chief, Survey Station
Chief, Technical Services

Black River, Port Huron, MI
Black River Port Huron
PH_01_BRV_20230427_CS
27 April 2023

Sheet Reference Number
7 of 10

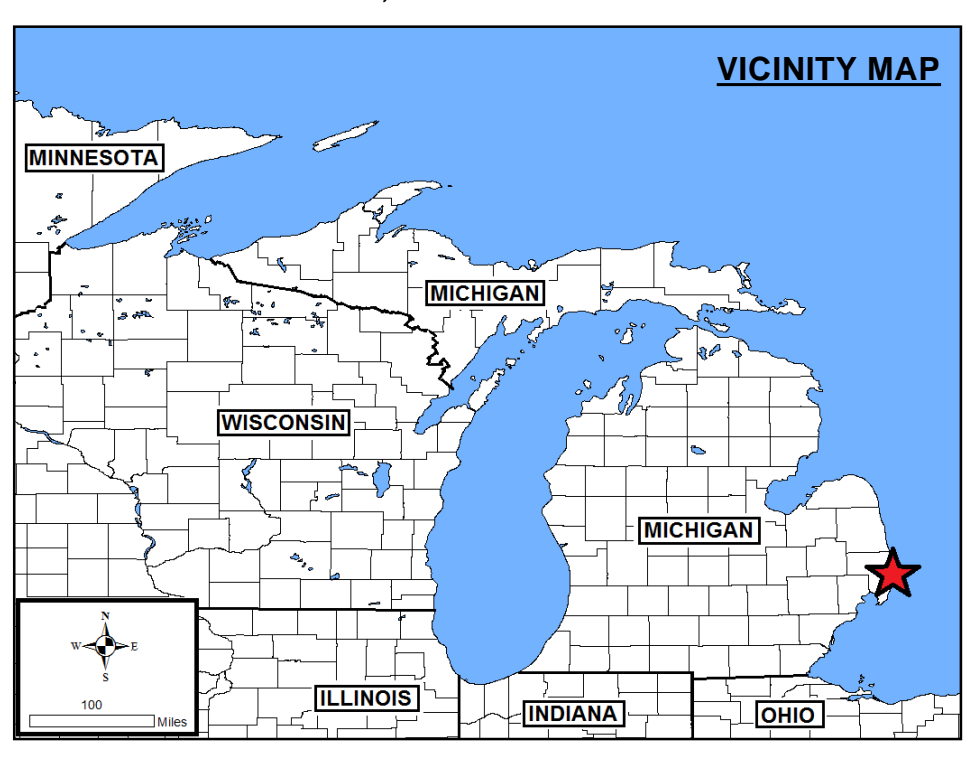
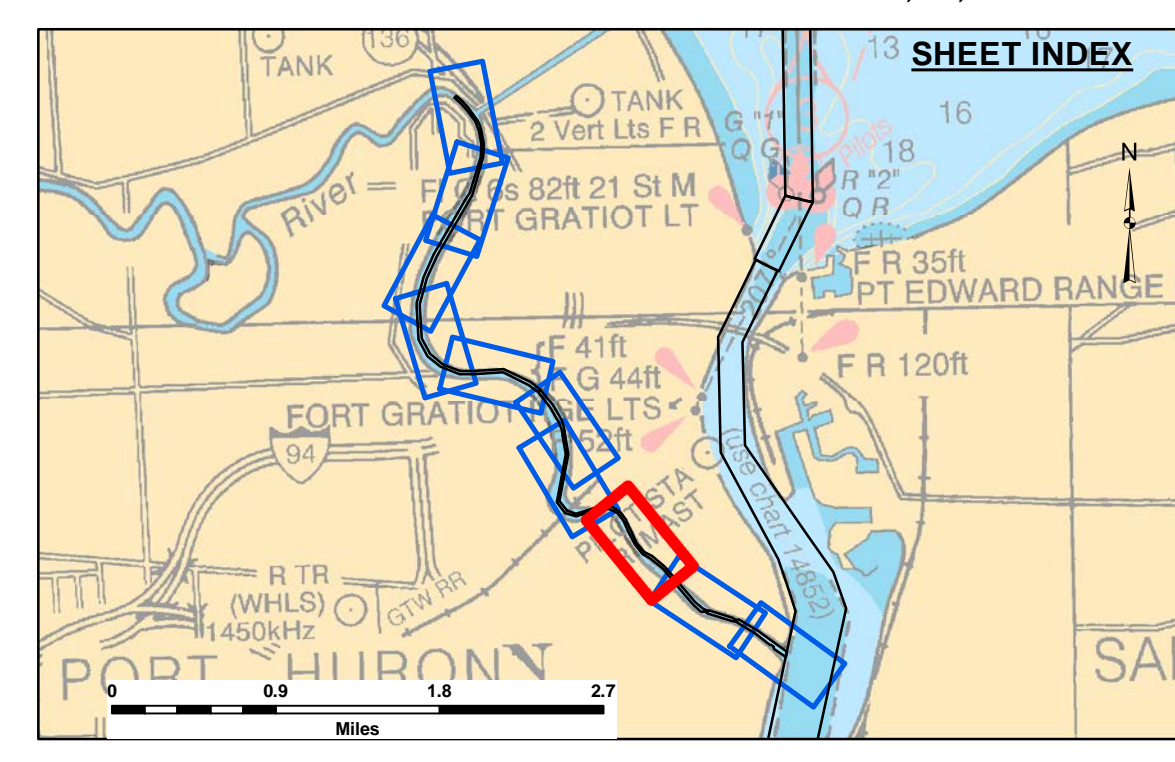


DISCLAIMER: The United States Government furnishes these data and the recipient accepts and uses them with the express understanding that the data are not to be used for any purpose other than that for which they were provided. The recipient may not transfer these data to others without also transferring the Disclaimer.

Intellectual Property: The Army represents the results of data collection, processing, and analysis for a specific US Army Corps of Engineers activity and retains the general existing conditions, accuracy, and reliability of the data for other than its intended purpose. The user is responsible for the results of any application of the data for other than its intended purpose.

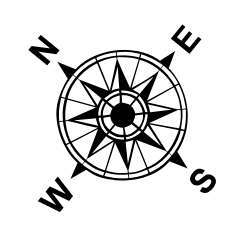
U.S. ARMY CORPS OF ENGINEERS DETROIT DISTRICT		
Submitted:	Surveyed By:	
Recommended:	Plotted By:	
Approved:	Checked By:	

Black River, Port Huron, MI
Black River, Port Huron
PH_01_BRV_20230427_CS
27 April 2023

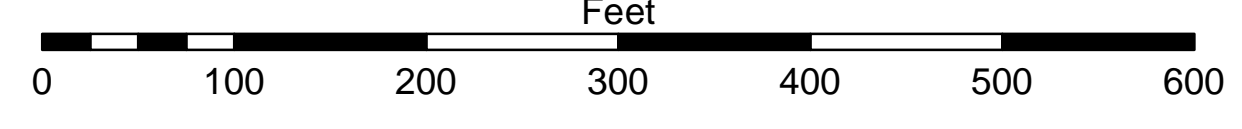


- LEGEND**
- Cable Submarine
 - - - Cable Overhead
 - Placement Area
 - ⊥ Beacon, General
 - Contour Lines
 - ▭ Channel Limits

- SOUNDING LEGEND**
- LESS THAN PROJECT DEPTH
 - PROJECT DEPTH
 - PROJECT DEPTH +1'
 - PROJECT DEPTH +2'
 - PROJECT DEPTH +3'
 - PROJECT DEPTH +4'
 - PROJECT DEPTH +5'



1 inch = 100 feet



NOTES: THE SOUNDINGS AND ASSOCIATED INFORMATION REPRESENTED HEREIN ARE THE RESULT OF SURVEYS MADE ON THE DATE AS INDICATED AND CAN ONLY BE CONSIDERED REPRESENTATIVE OF THE GENERAL CONDITIONS EXISTING AT THE TIME OF SURVEY.

THE SOUNDINGS DEPICTED HEREIN ARE EXPRESSED IN U.S. SURVEY FEET AND TENTHS THEREOF AND ARE REFERENCED TO THE FOLLOWING DATUMS:
 HORIZONTAL: MICHIGAN STATE PLANE COORDINATE SYSTEM, MICHIGAN SOUTH ZONE #2113, NORTH AMERICAN DATUM (NAD) OF 1983.
 VERTICAL: INTERNATIONAL GREAT LAKES DATUM (IGLD) OF 1985.

THE ABOVE SURVEY WAS CONDUCTED USING THE U.S.A.C.E. SURVEY VESSEL LAUNCH 3053 EMPLOYING THE FOLLOWING COMPONENTS:
 POSITIONING: APPLANIX POS-MV4 W/MARINESTAR GNSS
 MOTION COMPENSATION: APPLANIX POS-MV4
 SONAR: ODOM CV-300
 SOFTWARE: HYPACK

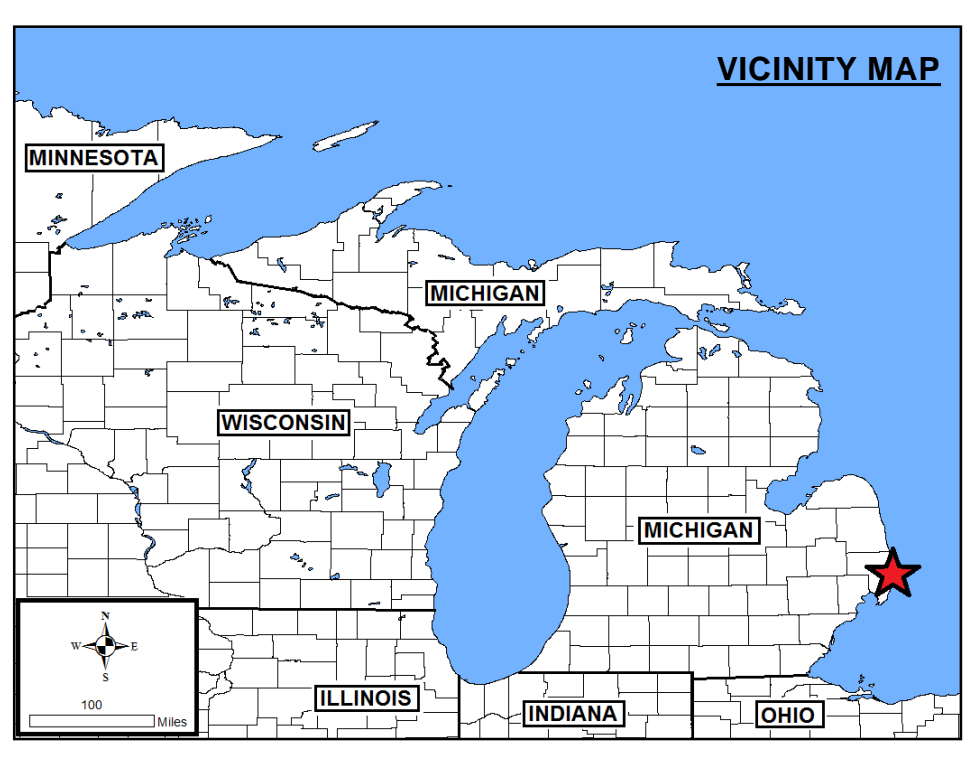
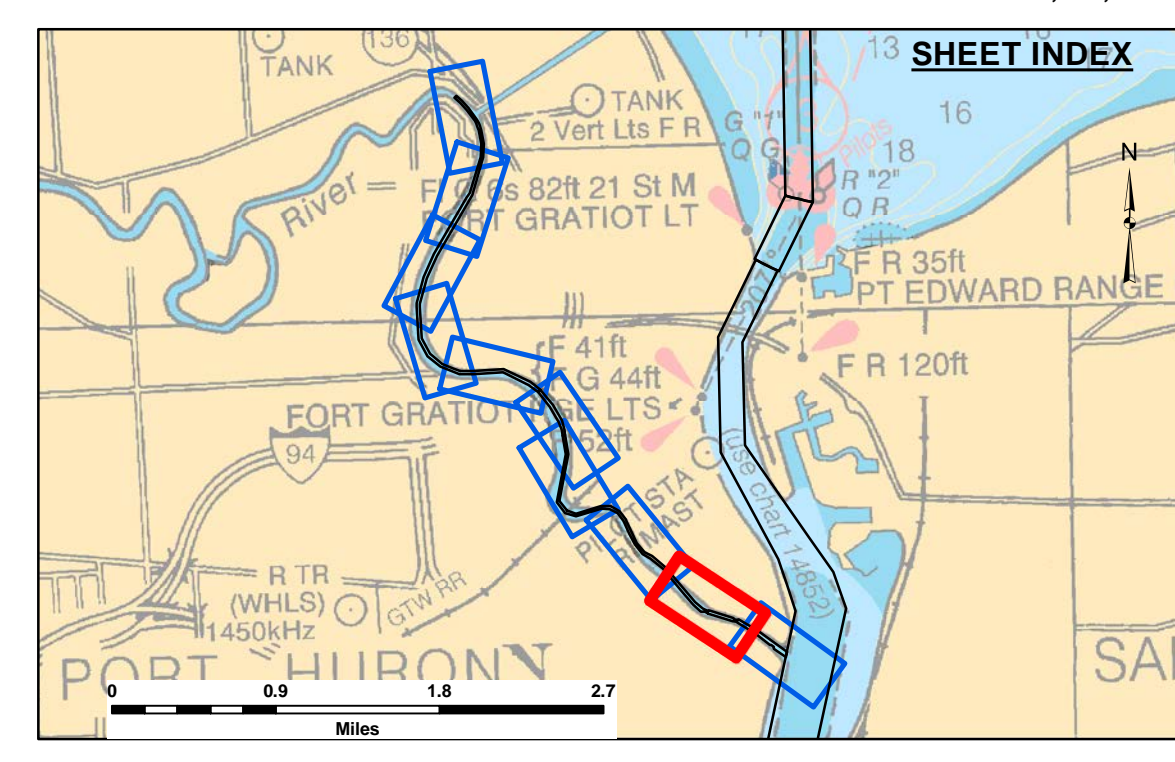
TIDE CORRECTION VALUES REFERENCED FROM:
 NOAA TIDE GAGE "MOUTH OF THE BLACK RIVER, MI" (#9014090).

Sheet Reference Number
8 of 10



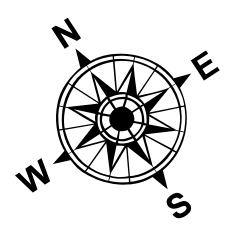
DISCLAIMER: The United States Government furnishes these data and the recipient accepts and uses them with the express understanding that the data are not to be used for any purpose other than that for which they were provided. The United States Government makes no warranty, expressed or implied, concerning the accuracy, completeness, reliability, usability or suitability for any particular purpose of the data. The user is responsible for the accuracy of the data for other than its intended purpose. These data are not to be used for any purpose other than that for which they were provided. The recipient may not transfer these data to others without also transferring this Disclaimer.

U.S. ARMY CORPS OF ENGINEERS DETROIT DISTRICT		
Submitted:	Surveyed By:	Checked By:
Recommended:	Plotted By:	
Approved:	Chief, Survey Station	Chief, Technical Services

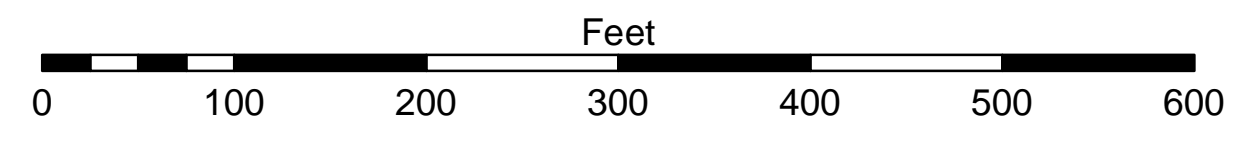


- LEGEND**
- Cable Submarine
 - - - Cable Overhead
 - Placement Area
 - ⊥ Beacon, General
 - Contour Lines
 - ▭ Channel Limits

- SOUNDING LEGEND**
- LESS THAN PROJECT DEPTH
 - PROJECT DEPTH
 - PROJECT DEPTH +1'
 - PROJECT DEPTH +2'
 - PROJECT DEPTH +3'
 - PROJECT DEPTH +4'
 - PROJECT DEPTH +5'



1 inch = 100 feet



NOTES: THE SOUNDINGS AND ASSOCIATED INFORMATION REPRESENTED HEREIN ARE THE RESULT OF SURVEYS MADE ON THE DATE AS INDICATED AND CAN ONLY BE CONSIDERED REPRESENTATIVE OF THE GENERAL CONDITIONS EXISTING AT THE TIME OF SURVEY.

THE SOUNDINGS DEPICTED HEREIN ARE EXPRESSED IN U.S. SURVEY FEET AND TENTHS THEREOF AND ARE REFERENCED TO THE FOLLOWING DATUMS:
 HORIZONTAL: MICHIGAN STATE PLANE COORDINATE SYSTEM, MICHIGAN SOUTH ZONE #2113, NORTH AMERICAN DATUM (NAD) OF 1983.
 VERTICAL: INTERNATIONAL GREAT LAKES DATUM (IGLD) OF 1985.

THE ABOVE SURVEY WAS CONDUCTED USING THE U.S.A.C.E. SURVEY VESSEL LAUNCH 3053 EMPLOYING THE FOLLOWING COMPONENTS:
 POSITIONING: APPLANIX POS-MV4 W/MARINESTAR GNSS
 MOTION COMPENSATION: APPLANIX POS-MV4
 SONAR: ODOM CV-300
 SOFTWARE: HYPACK

TIDE CORRECTION VALUES REFERENCED FROM:
 NOAA TIDE GAGE "MOUTH OF THE BLACK RIVER, MI" (#6014090).

Black River, Port Huron, MI
Black River Port Huron
PH_01_BRV_20230427_CS
27 April 2023

Sheet Reference Number
9 of 10



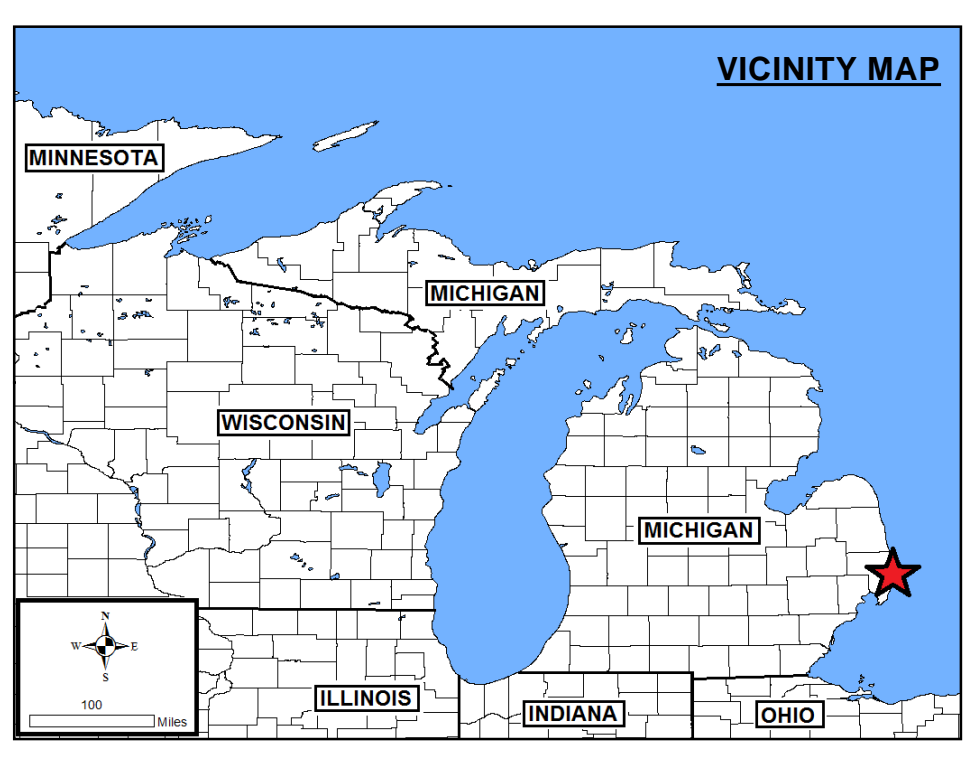
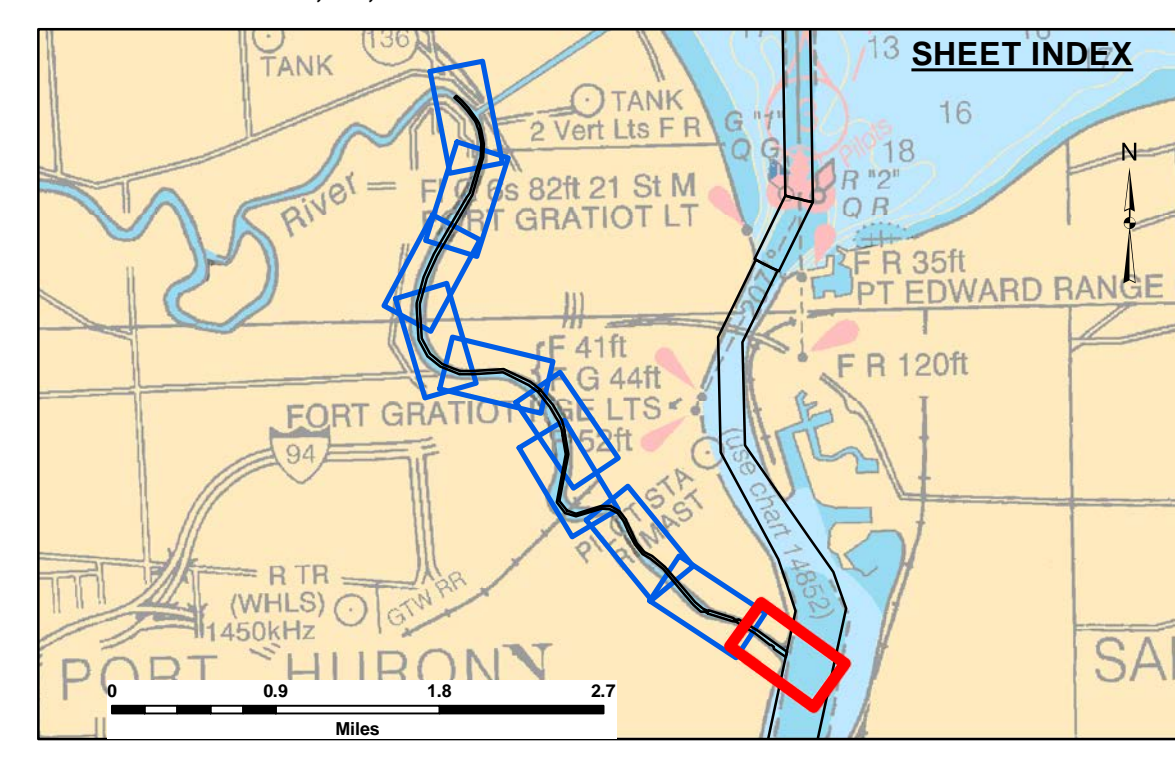
DISCLAIMER: The United States Government furnishes these data and the recipient accepts and uses them with the express understanding that the data are not intended for any purpose other than that for which they were provided. The recipient may not transfer these data to others without also transferring this Disclaimer.

Access Constraints: The United States Government furnishes these data and the recipient accepts and uses them with the express understanding that the data are not intended for any purpose other than that for which they were provided. The recipient may not transfer these data to others without also transferring this Disclaimer.

Product Use Liability: The data represent the results of data collection and processing for a specific US Army Corps of Engineers activity and indicate the general existing conditions. The data are not intended for any purpose other than that for which they were provided. The recipient may not transfer these data to others without also transferring this Disclaimer.

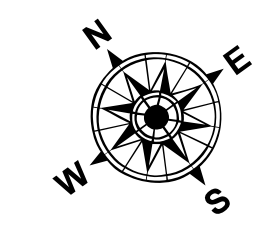
U.S. ARMY CORPS OF ENGINEERS DETROIT DISTRICT		
Submitted:	Surveyed By:	
Recommended:	Plotted By:	
Approved:	Checked By:	

Black River, Port Huron, MI
Black River Port Huron
PH_01_BRV_20230427_CS
27 April 2023

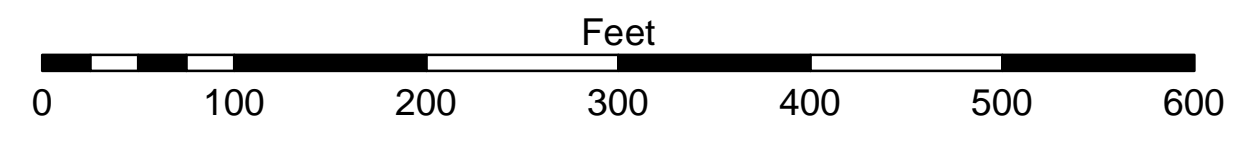


- LEGEND**
- Cable Submarine
 - - - Cable Overhead
 - Placement Area
 - ⊥ Beacon, General
 - Contour Lines
 - ▭ Channel Limits

- SOUNDING LEGEND**
- LESS THAN PROJECT DEPTH
 - PROJECT DEPTH
 - PROJECT DEPTH +1'
 - PROJECT DEPTH +2'
 - PROJECT DEPTH +3'
 - PROJECT DEPTH +4'
 - PROJECT DEPTH +5'



1 inch = 100 feet



NOTES: THE SOUNDINGS AND ASSOCIATED INFORMATION REPRESENTED HEREIN ARE THE RESULT OF SURVEYS MADE ON THE DATE AS INDICATED AND CAN ONLY BE CONSIDERED REPRESENTATIVE OF THE GENERAL CONDITIONS EXISTING AT THE TIME OF SURVEY.

THE SOUNDINGS DEPICTED HEREIN ARE EXPRESSED IN U.S. SURVEY FEET AND TENTHS THEREOF AND ARE REFERENCED TO THE FOLLOWING DATUMS:
 HORIZONTAL: MICHIGAN STATE PLANE COORDINATE SYSTEM, MICHIGAN SOUTH ZONE #2113, NORTH AMERICAN DATUM (NAD) OF 1983.
 VERTICAL: INTERNATIONAL GREAT LAKES DATUM (IGLD) OF 1985.

THE ABOVE SURVEY WAS CONDUCTED USING THE U.S.A.C.E. SURVEY VESSEL LAUNCH 3053 EMPLOYING THE FOLLOWING COMPONENTS:
 POSITIONING: APPLANIX POS-MV4 W/MARINESTAR GNSS
 MOTION COMPENSATION: APPLANIX POS-MV4
 SONAR: ODOM CV-300
 SOFTWARE: HYPACK

TIDE CORRECTION VALUES REFERENCED FROM:
 NOAA TIDE GAGE "MOUTH OF THE BLACK RIVER, MI" (#9014090).

Sheet Reference Number
10 of 10