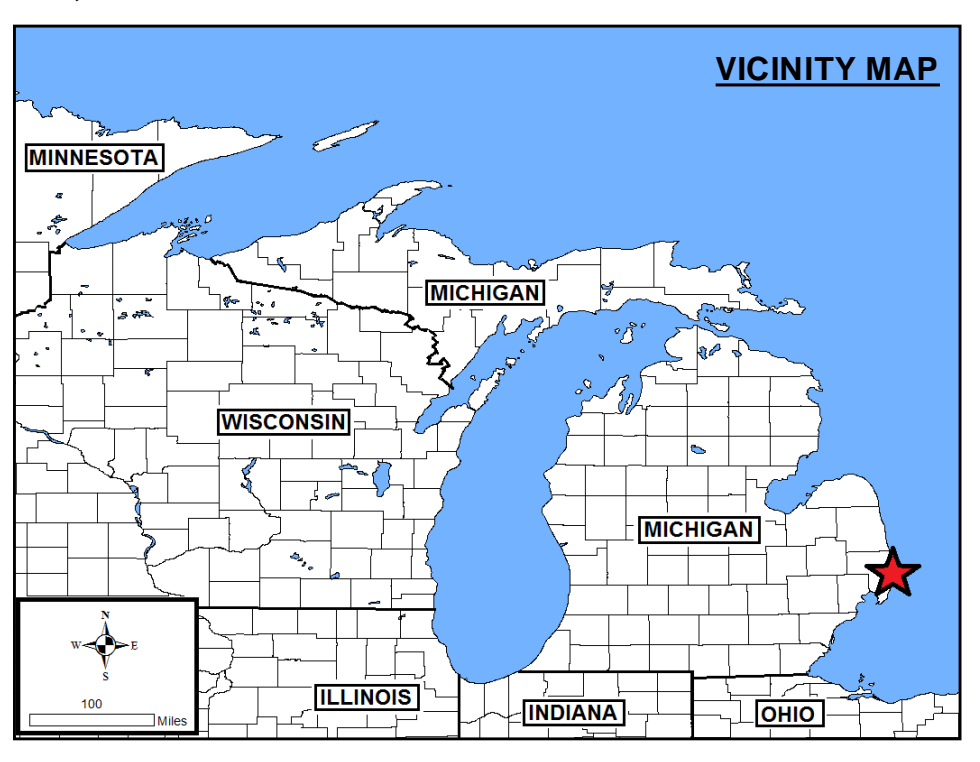
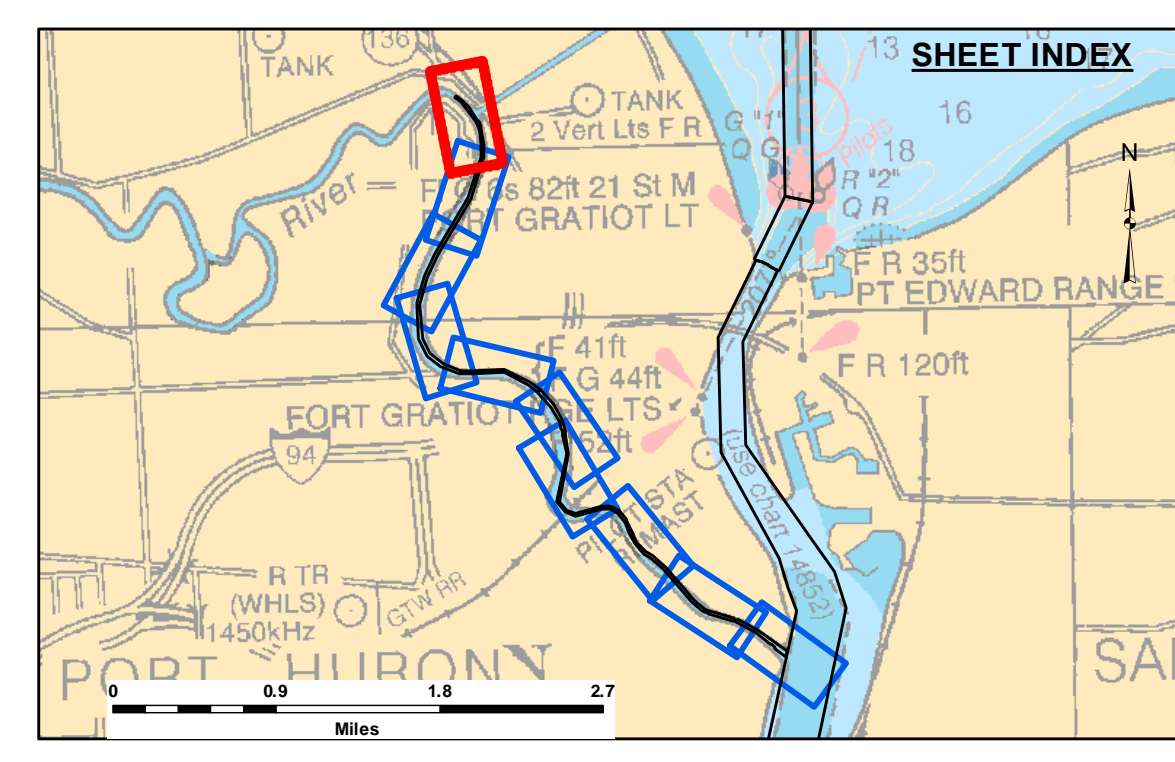


DISCLAIMER: The data represents the results of data collection and processing for a specific US Army Corps of Engineers activity and indicates the general existing conditions. The user is responsible for the accuracy, completeness, and reliability of the data for other than its intended purpose. The user is responsible for the accuracy, completeness, and reliability of the data for other than its intended purpose. The user is responsible for the accuracy, completeness, and reliability of the data for other than its intended purpose.

U.S. ARMY CORPS OF ENGINEERS DETROIT DISTRICT		
Submitted By:	Surveyed By:	
Recommended By:	Plotted By:	
Approved:	Checked By:	

Black River, Port Huron, MI
Black River Port Huron
PH_01_BRV_20201120_CS
20 November 2020

Sheet Reference Number
1 of 10

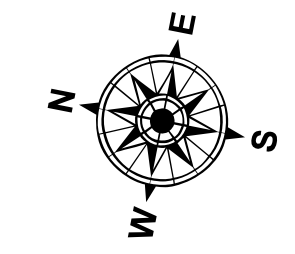


LEGEND

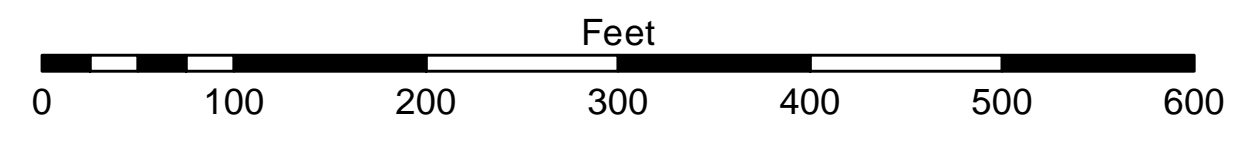
- Cable Submarine
- - - Cable Overhead
- Placement Area
- ⊥ Beacon, General
- Contour Lines
- ▭ Channel Limits

SOUNDING LEGEND

- LESS THAN PROJECT DEPTH
- PROJECT DEPTH
- PROJECT DEPTH +1'
- PROJECT DEPTH +2'
- PROJECT DEPTH +3'
- PROJECT DEPTH +4'
- PROJECT DEPTH +5'



1 inch = 100 feet

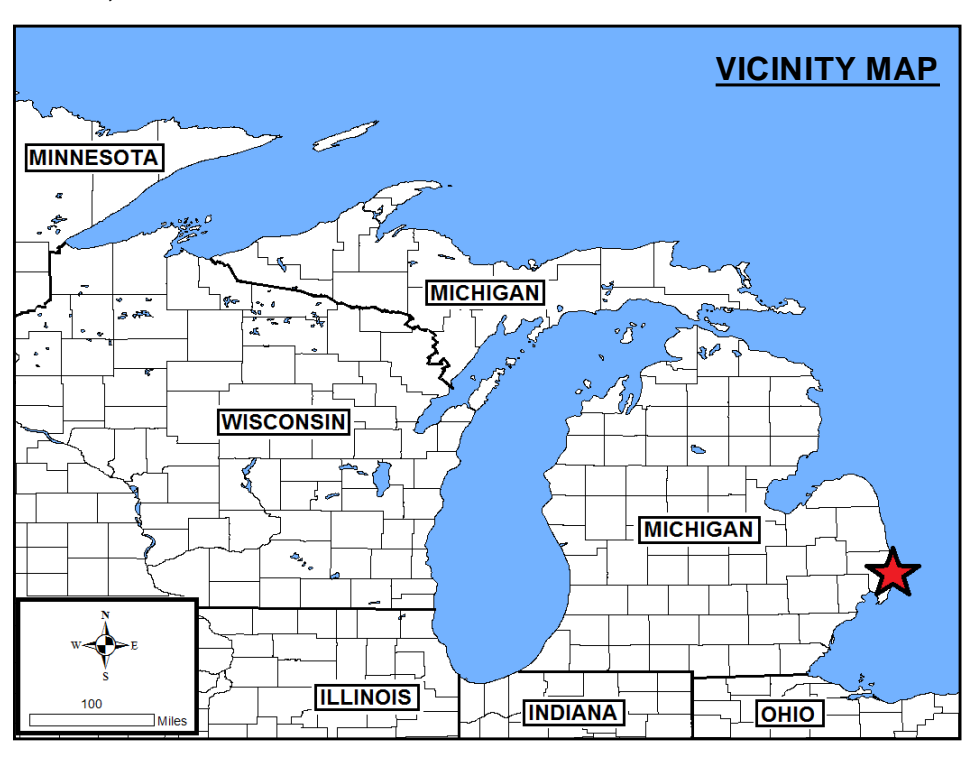
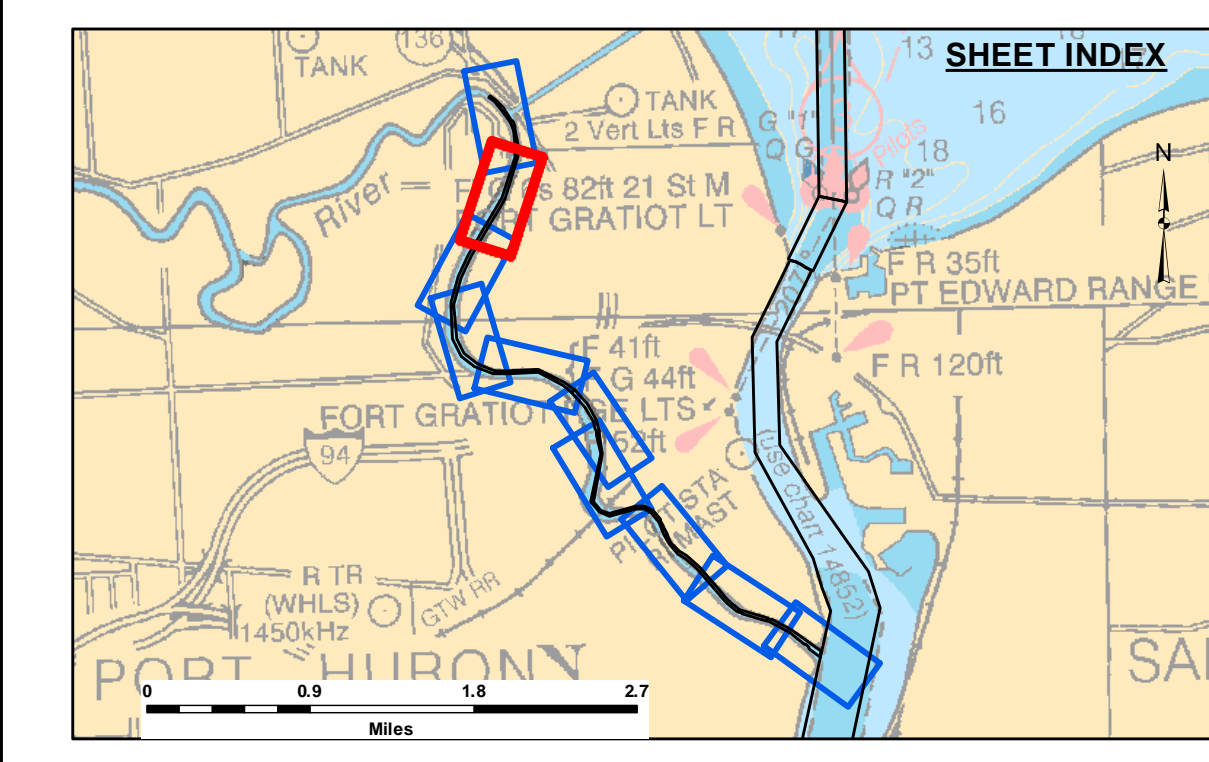
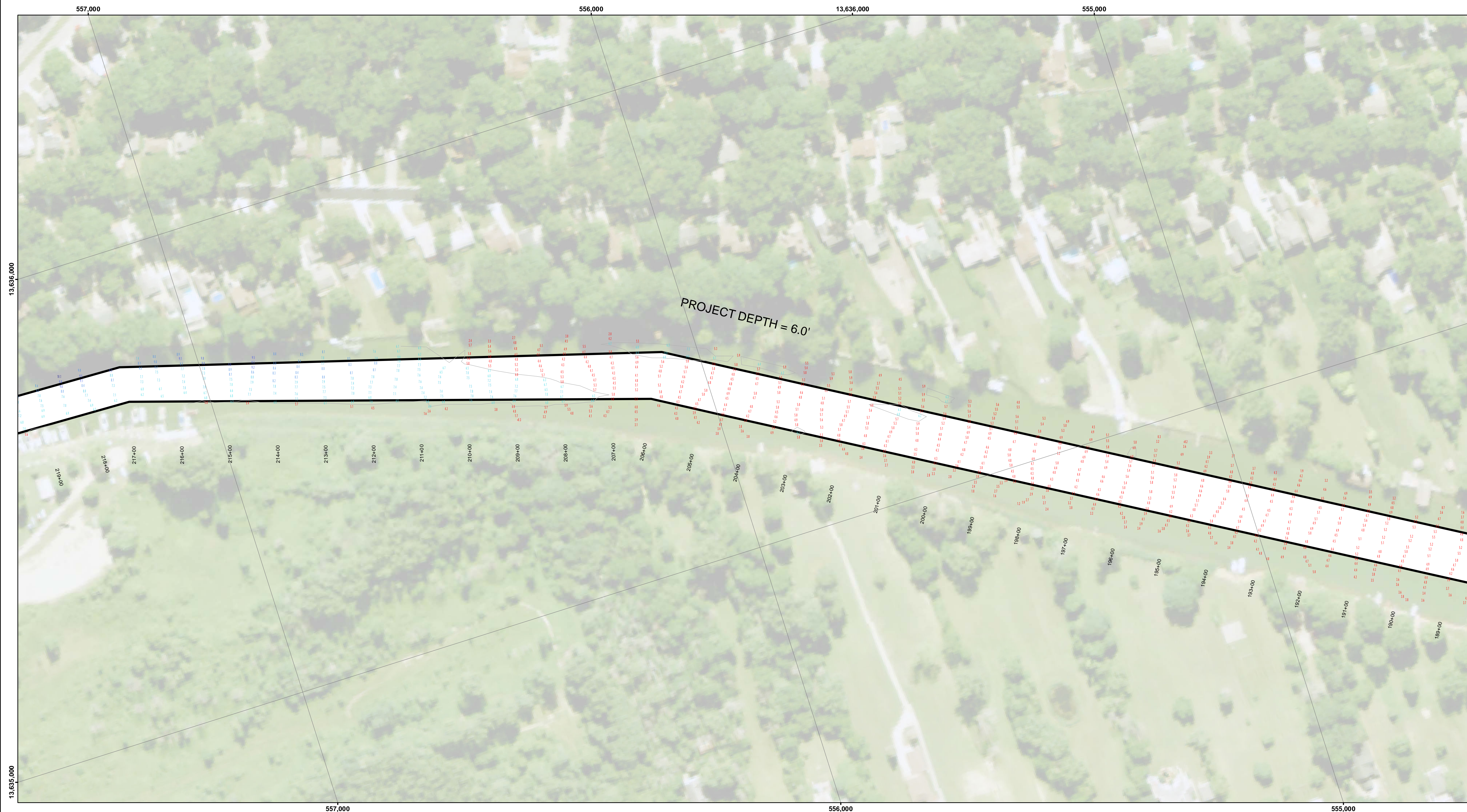


NOTES: THE SOUNDINGS AND ASSOCIATED INFORMATION REPRESENTED HEREIN ARE THE RESULT OF SURVEYS MADE ON THE DATE AS INDICATED AND CAN ONLY BE CONSIDERED REPRESENTATIVE OF THE GENERAL CONDITIONS EXISTING AT THE TIME OF SURVEY.

THE SOUNDINGS DEPICTED HEREIN ARE EXPRESSED IN U.S. SURVEY FEET AND TENTHS THEREOF AND ARE REFERENCED TO THE FOLLOWING DATUMS:
 HORIZONTAL: MICHIGAN STATE PLANE COORDINATE SYSTEM, MICHIGAN SOUTH ZONE #2113, NORTH AMERICAN DATUM (NAD) OF 1983.
 VERTICAL: INTERNATIONAL GREAT LAKES DATUM (IGLD) OF 1985.

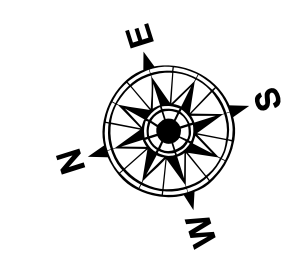
THE ABOVE SURVEY WAS CONDUCTED USING THE U.S.A.C.E. SURVEY VESSEL LAUNCH 3053 EMPLOYING THE FOLLOWING COMPONENTS:
 POSITIONING: APPLANIX POS-MV4 W/MARINESTAR GNSS
 MOTION COMPENSATION: APPLANIX POS-MV4
 SONAR: ODOM CV-300
 SOFTWARE: HYPACK

TIDE CORRECTION VALUES REFERENCED FROM:
 A PAINT MARK ON SEAWALL DESCRIBED AS 'TBM LXIE.' LOCATED ON TOP OF STEEL WALL SOUTH EAST OF LAUNCH (SHEET 2). ELEVATION IGLD 85 = 582.27.
 NOAA TIDE GAGE "MOUTH OF THE BLACK RIVER, MI" (#9014090).

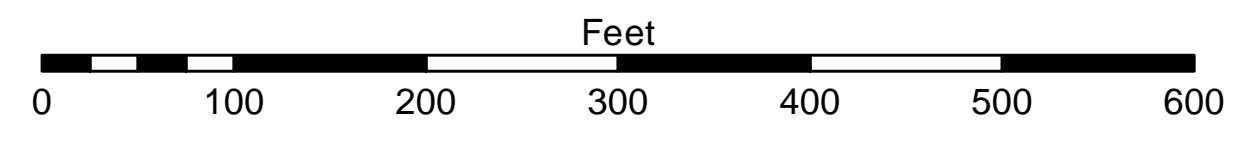


- LEGEND**
- Cable Submarine
 - - - Cable Overhead
 - Placement Area
 - ⊥ Beacon, General
 - Contour Lines
 - ▭ Channel Limits

- SOUNDING LEGEND**
- LESS THAN PROJECT DEPTH
 - PROJECT DEPTH
 - PROJECT DEPTH +1'
 - PROJECT DEPTH +2'
 - PROJECT DEPTH +3'
 - PROJECT DEPTH +4'
 - PROJECT DEPTH +5'



1 inch = 100 feet



NOTES: THE SOUNDINGS AND ASSOCIATED INFORMATION REPRESENTED HEREIN ARE THE RESULT OF SURVEYS MADE ON THE DATE AS INDICATED AND CAN ONLY BE CONSIDERED REPRESENTATIVE OF THE GENERAL CONDITIONS EXISTING AT THE TIME OF SURVEY.

THE SOUNDINGS DEPICTED HEREIN ARE EXPRESSED IN U.S. SURVEY FEET AND TENTHS THEREOF AND ARE REFERENCED TO THE FOLLOWING DATUMS:
 HORIZONTAL: MICHIGAN STATE PLANE COORDINATE SYSTEM, MICHIGAN SOUTH ZONE #2113, NORTH AMERICAN DATUM (NAD) OF 1983.
 VERTICAL: INTERNATIONAL GREAT LAKES DATUM (IGLD) OF 1985.

THE ABOVE SURVEY WAS CONDUCTED USING THE U.S.A.C.E. SURVEY VESSEL LAUNCH 3053 EMPLOYING THE FOLLOWING COMPONENTS:

POSITIONING: APPLANIX POS-MV4 WMARINESTAR GNSS
 MOTION COMPENSATION: APPLANIX POS-MV4
 SONAR: ODOM CV-300
 SOFTWARE: HYPACK

TIDE CORRECTION VALUES REFERENCED FROM:
 A PAINT MARK ON SEAWALL DESCRIBED AS 'TBM LXIE.' LOCATED ON TOP OF STEEL WALL SOUTH EAST OF LAUNCH (SHEET 2). ELEVATION IGLD 85 = 582.27.
 NOAA TIDE GAGE "MOUTH OF THE BLACK RIVER, MI" (#9014090).

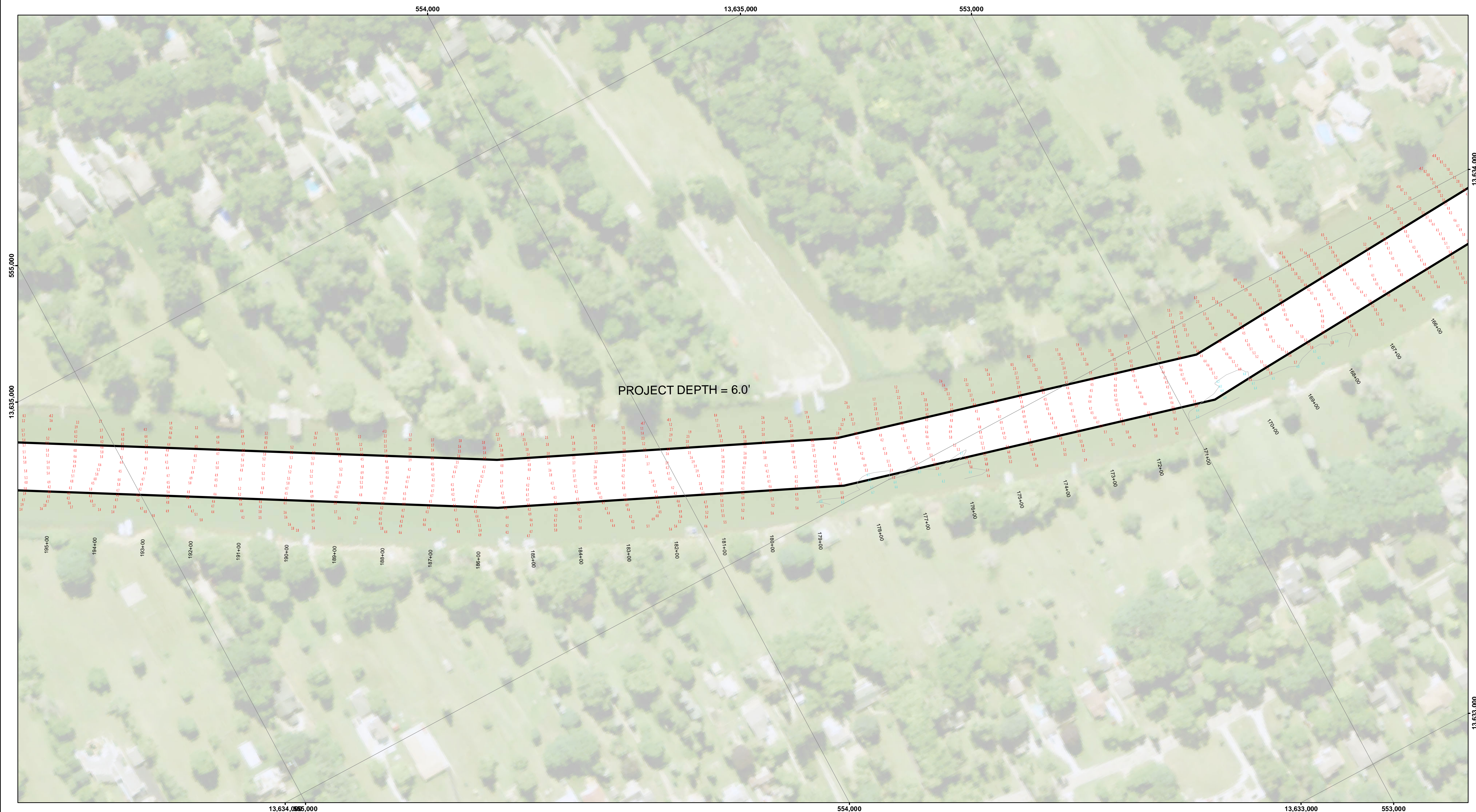


DISCLAIMER: The data represents the results of data collection and processing for a specific US Army Corps of Engineers activity and indicates the general existing conditions. The user is responsible for the accuracy, completeness, and reliability of the data for other than its intended purpose. The user is responsible for the accuracy, completeness, and reliability of the data for other than its intended purpose. These data are provided to the recipient for their use and are not to be used for any other purpose. The recipient may not transfer these data to others without the written consent of the Chief, Technical Services.

U.S. ARMY CORPS OF ENGINEERS DETROIT DISTRICT		
Submitted:	Surveyed By:	
Recommended:	Plotted By:	
Approved:	Chief, Survey Section	
	Chief, Technical Services	

Black River, Port Huron, MI
Black River Port Huron
PH_01_BRV_20201120_CS
20 November 2020

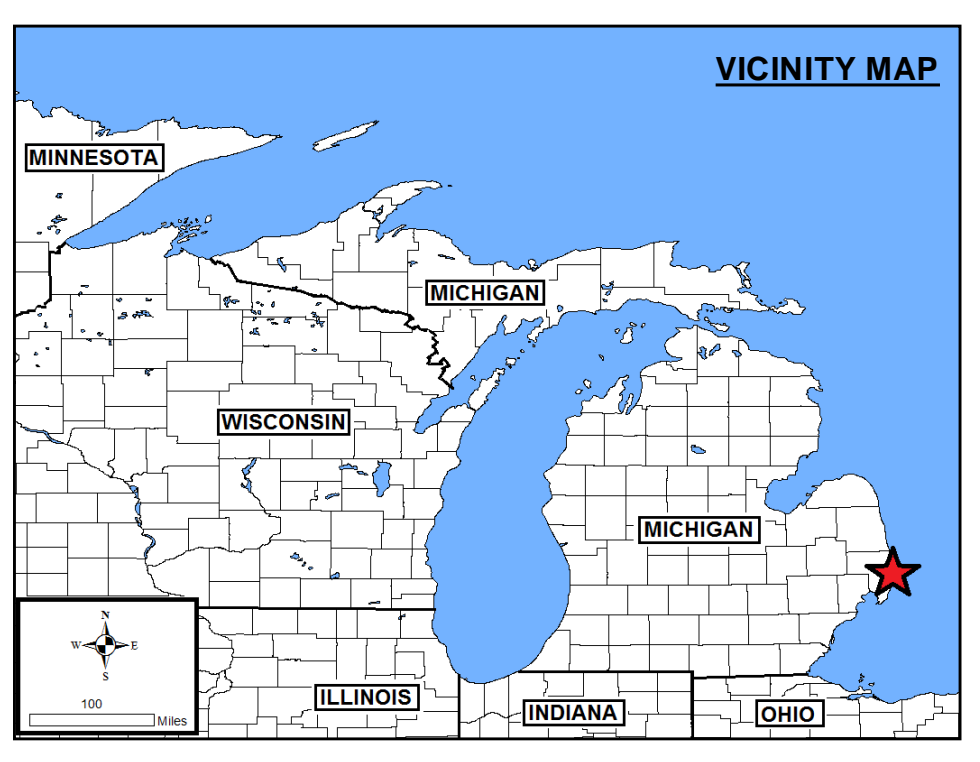
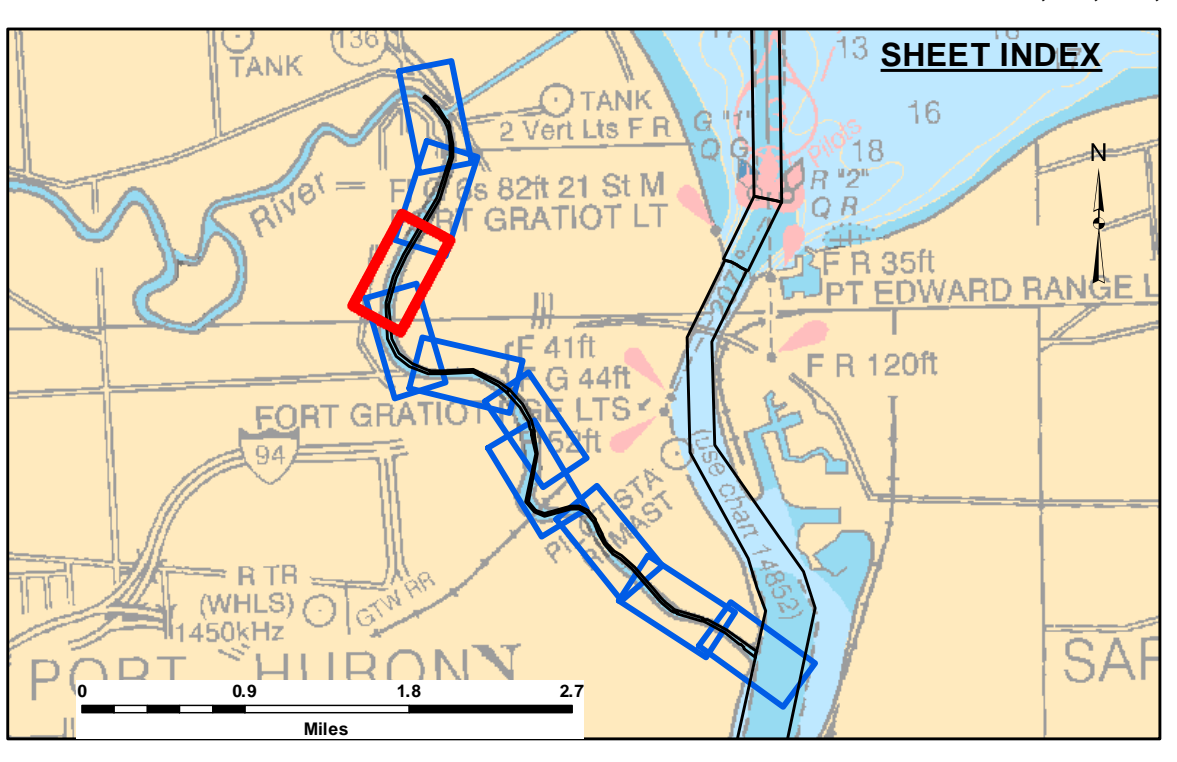
Sheet Reference Number
2 of 10



DISCLAIMER: The data represented by the results of data collection and processing for a specific US Army Corps of Engineers activity and indicates the general existing conditions, expressed, or implied concerning the accuracy, completeness, readability, usability or suitability for any particular purpose of the data. The user is responsible for the accuracy, completeness, readability, usability or suitability of the data for other than its intended purpose. These data are provided to the recipient for their use and are not to be used for any other purpose. The recipient may not transfer these data to others without also transferring this disclaimer.

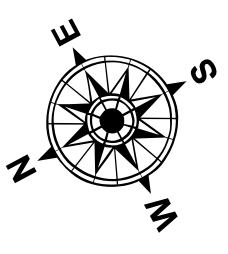
U.S. ARMY CORPS OF ENGINEERS DETROIT DISTRICT		
Submitted:	Surveyed By:	
Recommended:	Plotted By:	
Approved:	Checked By:	

Black River, Port Huron, MI
Black River Port Huron
PH_01_BRV_20201120_CS
20 November 2020

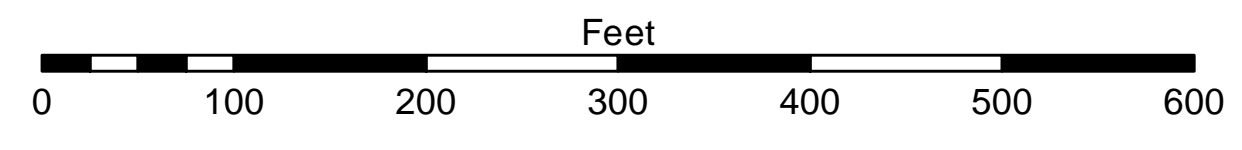


- LEGEND**
- Cable Submarine
 - - - Cable Overhead
 - Placement Area
 - ⊥ Beacon, General
 - Contour Lines
 - ▭ Channel Limits

- SOUNDING LEGEND**
- LESS THAN PROJECT DEPTH
 - PROJECT DEPTH
 - PROJECT DEPTH +1'
 - PROJECT DEPTH +2'
 - PROJECT DEPTH +3'
 - PROJECT DEPTH +4'
 - PROJECT DEPTH +5'



1 inch = 100 feet



NOTES: THE SOUNDINGS AND ASSOCIATED INFORMATION REPRESENTED HEREIN ARE THE RESULT OF SURVEYS MADE ON THE DATE AS INDICATED AND CAN ONLY BE CONSIDERED REPRESENTATIVE OF THE GENERAL CONDITIONS EXISTING AT THE TIME OF SURVEY.

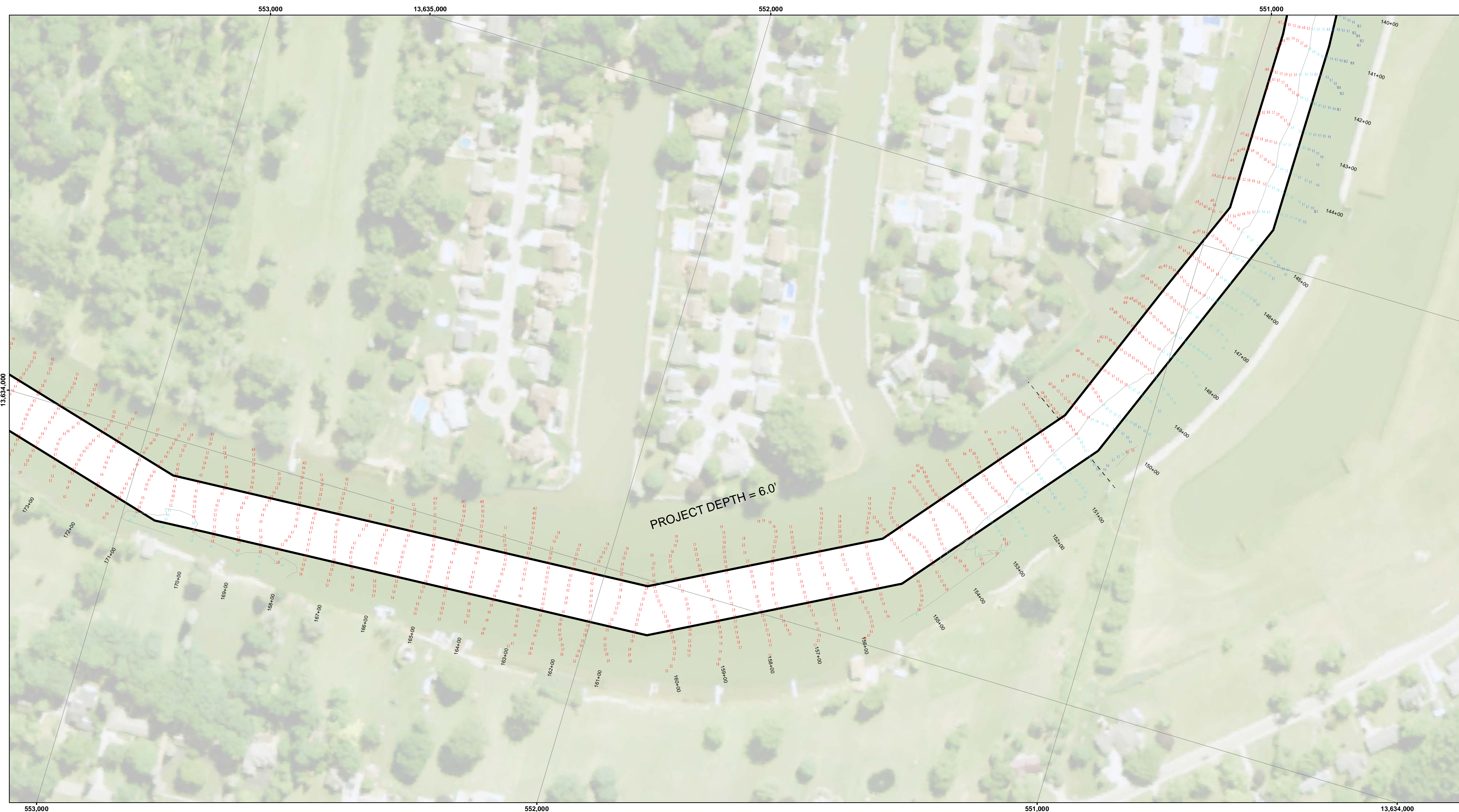
THE SOUNDINGS DEPICTED HEREIN ARE EXPRESSED IN U.S. SURVEY FEET AND TENTHS THEREOF AND ARE REFERENCED TO THE FOLLOWING DATUMS:
 HORIZONTAL: MICHIGAN STATE PLANE COORDINATE SYSTEM, MICHIGAN SOUTH ZONE #2113, NORTH AMERICAN DATUM (NAD) OF 1983.
 VERTICAL: INTERNATIONAL GREAT LAKES DATUM (IGLD) OF 1985.

THE ABOVE SURVEY WAS CONDUCTED USING THE U.S.A.C.E. SURVEY VESSEL LAUNCH 3053 EMPLOYING THE FOLLOWING COMPONENTS:

POSITIONING: APPLANIX POS-MV4 W/MARINESTAR GNSS
 MOTION COMPENSATION: APPLANIX POS-MV4
 SONAR: ODOM CV-300
 SOFTWARE: HYPACK

TIDE CORRECTION VALUES REFERENCED FROM:
 A PAINT MARK ON SEAWALL DESCRIBED AS 'TBM LXIE.' LOCATED ON TOP OF STEEL WALL SOUTH EAST OF LAUNCH (SHEET 2). ELEVATION IGLD 85 = 582.27.
 NOAA TIDE GAGE "MOUTH OF THE BLACK RIVER, MI" (#9014090).

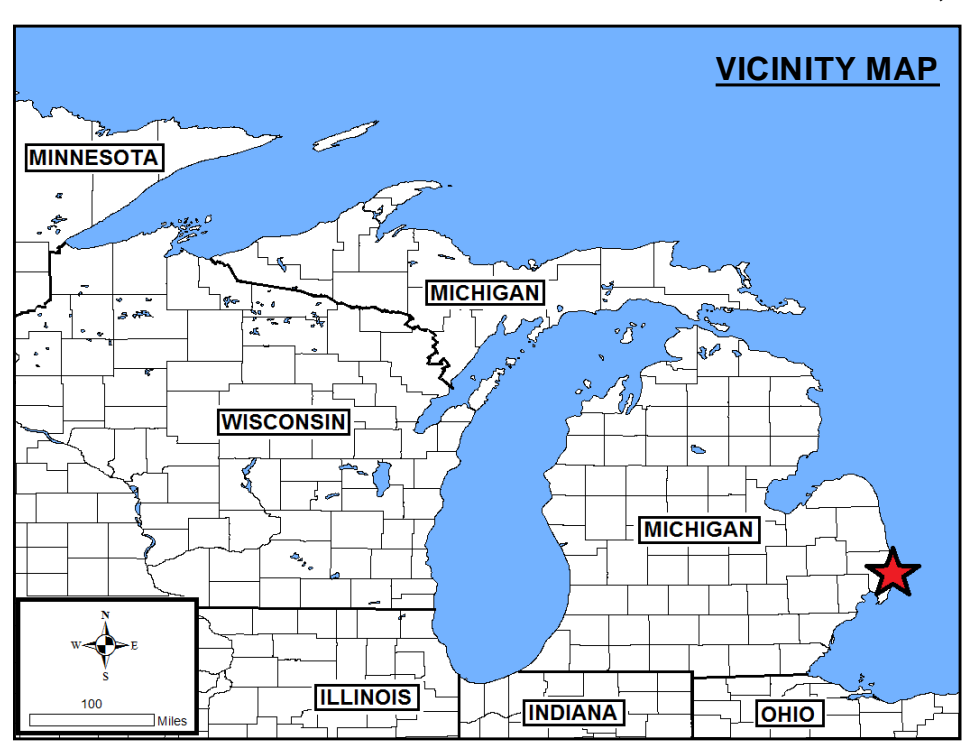
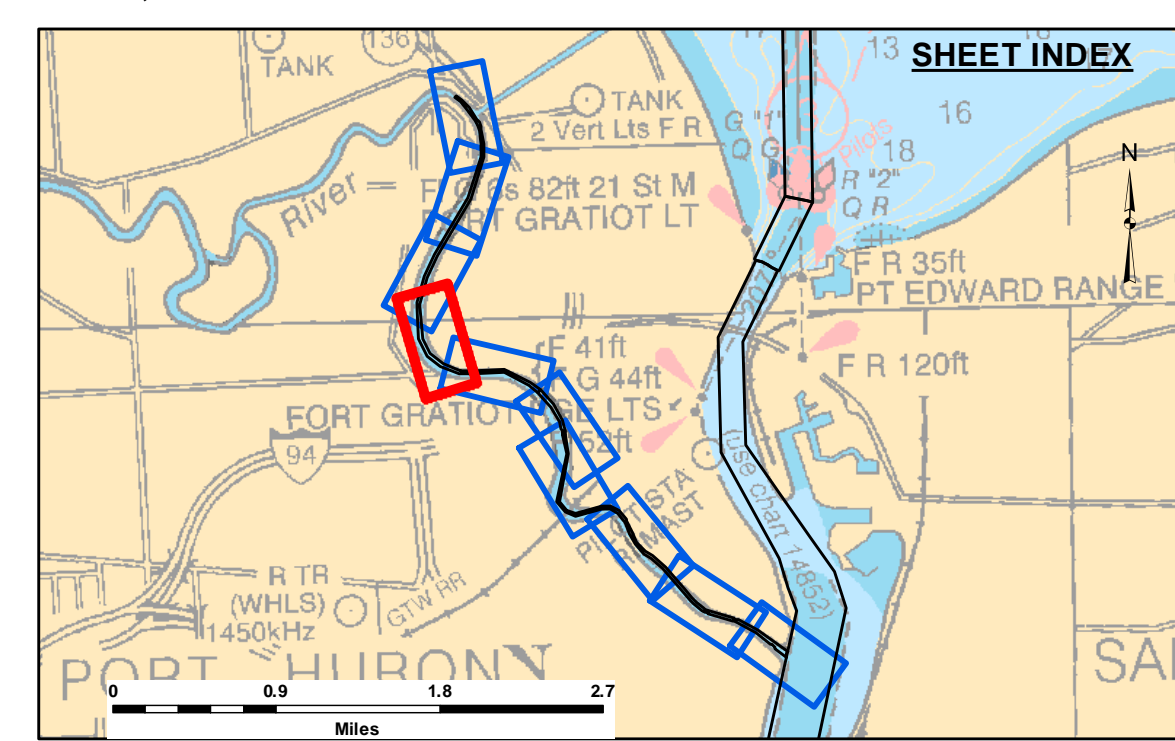
Sheet Reference Number
3 of 10



Disclaimer: The data represents the results of data collection and processing for a specific US Army Corps of Engineers activity and indicates the general existing conditions. The user is responsible for the accuracy, completeness, and reliability of the data for other than its intended purpose. The user is responsible for the accuracy, completeness, and reliability of the data for other than its intended purpose. The user is responsible for the accuracy, completeness, and reliability of the data for other than its intended purpose.

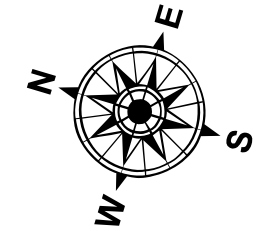
U.S. ARMY CORPS OF ENGINEERS DETROIT DISTRICT		
Submitted By:	Surveyed By:	Checked By:
Recommended By:	Plotted By:	
Approved:	Chief, Survey Section	Chief, Technical Services

Black River, Port Huron, MI
Black River Port Huron
PH_01_BRV_20201120_CS
20 November 2020

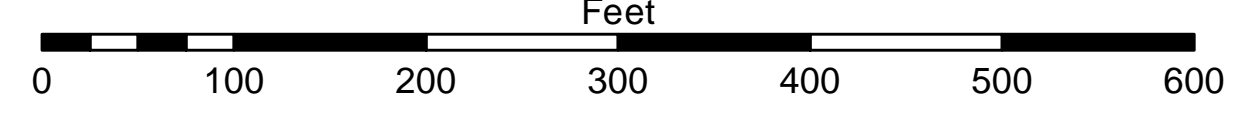


- LEGEND**
- Cable Submarine
 - - - Cable Overhead
 - Placement Area
 - ⊥ Beacon, General
 - Contour Lines
 - ▭ Channel Limits

- SOUNDING LEGEND**
- LESS THAN PROJECT DEPTH
 - PROJECT DEPTH
 - PROJECT DEPTH +1'
 - PROJECT DEPTH +2'
 - PROJECT DEPTH +3'
 - PROJECT DEPTH +4'
 - PROJECT DEPTH +5'



1 inch = 100 feet



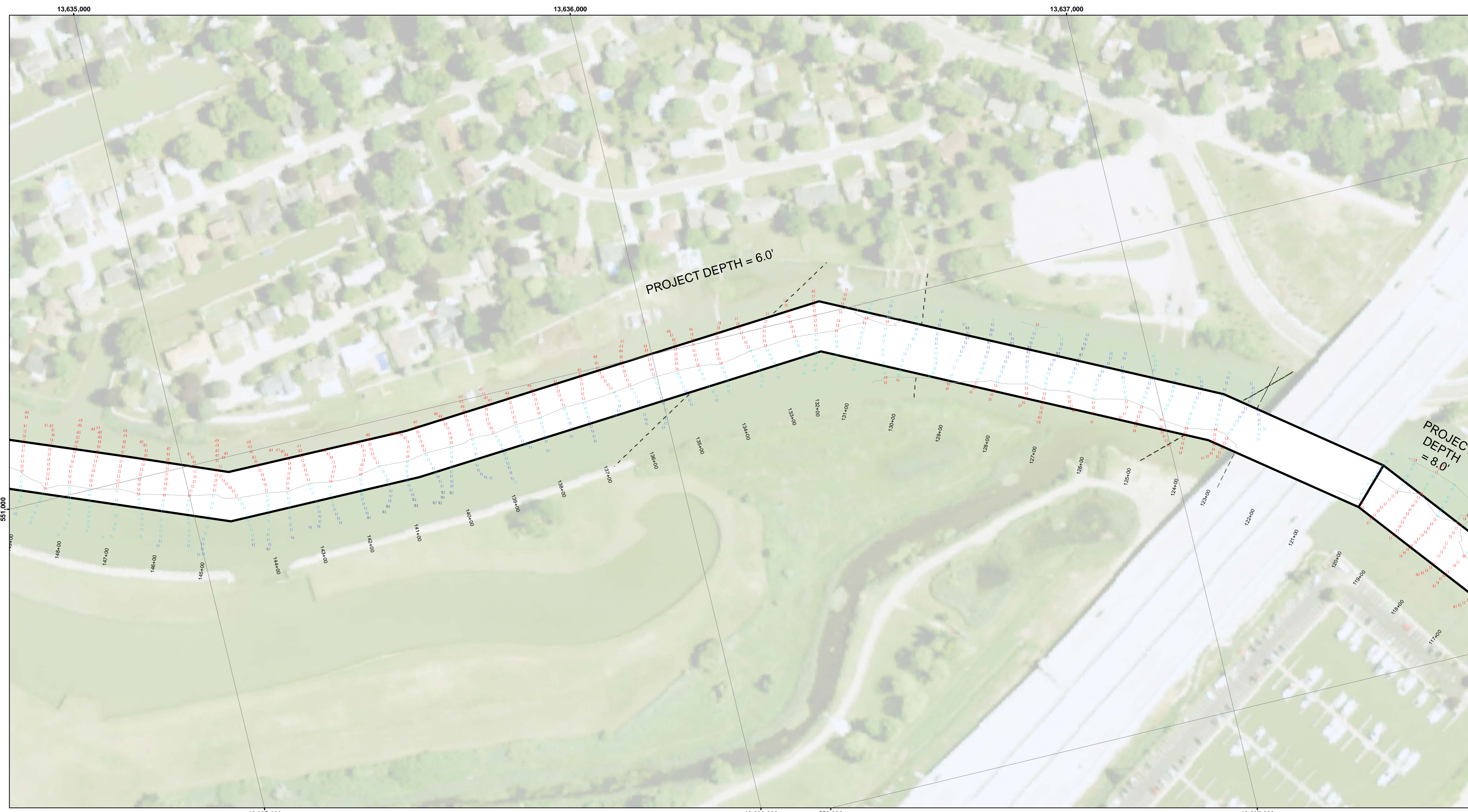
NOTES: THE SOUNDINGS AND ASSOCIATED INFORMATION REPRESENTED HEREIN ARE THE RESULT OF SURVEYS MADE ON THE DATE AS INDICATED AND CAN ONLY BE CONSIDERED REPRESENTATIVE OF THE GENERAL CONDITIONS EXISTING AT THE TIME OF SURVEY.

THE SOUNDINGS DEPICTED HEREIN ARE EXPRESSED IN U.S. SURVEY FEET AND TENTHS THEREOF AND ARE REFERENCED TO THE FOLLOWING DATUMS:
 HORIZONTAL: MICHIGAN STATE PLANE COORDINATE SYSTEM, MICHIGAN SOUTH ZONE #2113, NORTH AMERICAN DATUM (NAD) OF 1983.
 VERTICAL: INTERNATIONAL GREAT LAKES DATUM (IGLD) OF 1985.

THE ABOVE SURVEY WAS CONDUCTED USING THE U.S.A.C.E. SURVEY VESSEL LAUNCH 3053 EMPLOYING THE FOLLOWING COMPONENTS:
 POSITIONING: APPLANIX POS-MV4 W/MARINESTAR GNSS
 MOTION COMPENSATION: APPLANIX POS-MV4
 SONAR: ODOM CV-300
 SOFTWARE: HYPACK

TIDE CORRECTION VALUES REFERENCED FROM:
 A PAINT MARK ON SEAWALL DESCRIBED AS 'TBM LXIE.' LOCATED ON TOP OF STEEL WALL SOUTH EAST OF LAUNCH (SHEET 2). ELEVATION IGLD 85 = 582.27.
 NOAA TIDE GAGE "MOUTH OF THE BLACK RIVER, MI" (#9014090).

Sheet Reference Number
4 of 10



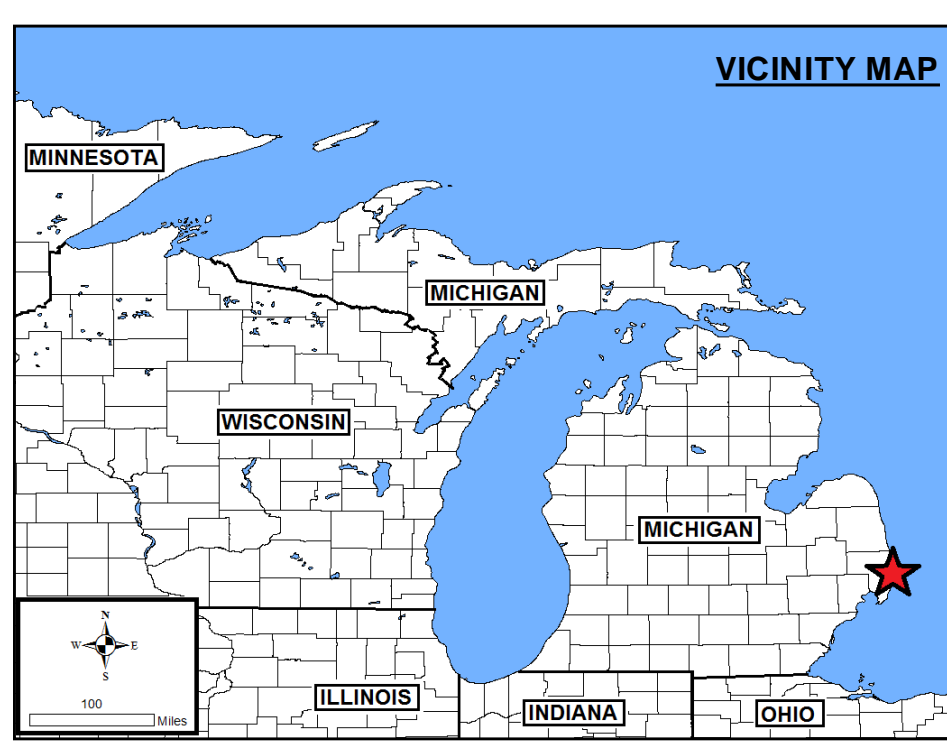
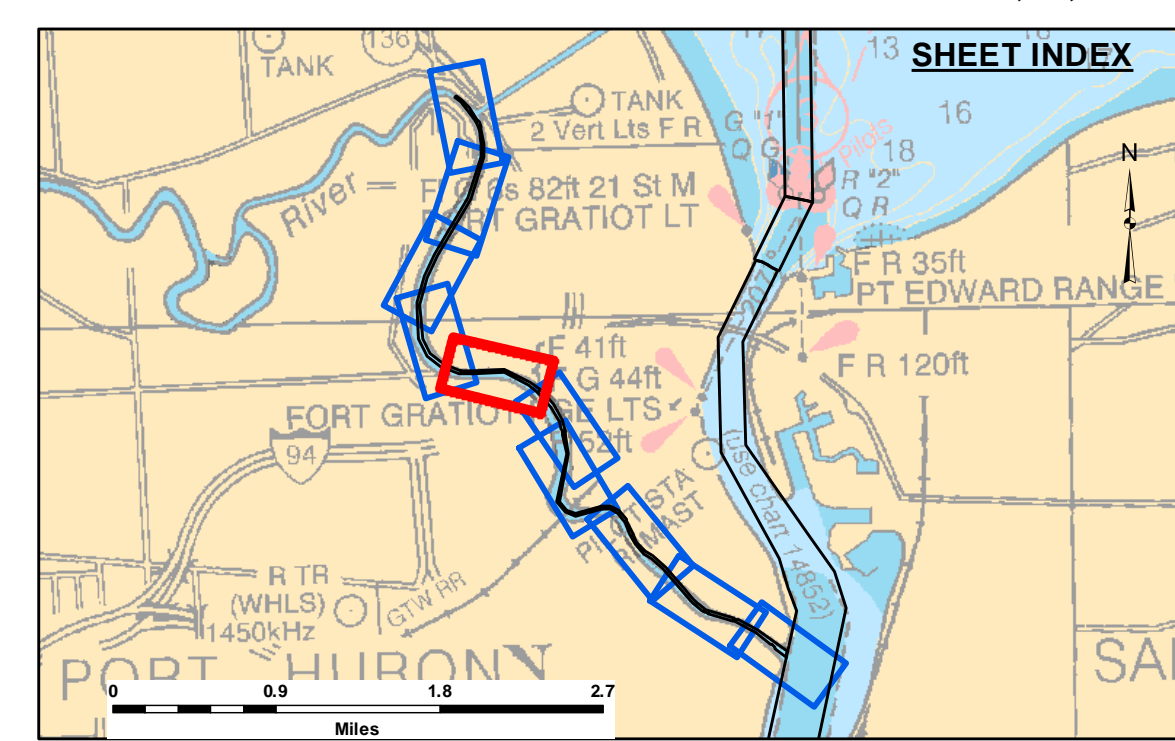
Disclaimer: The data represents the results of data collection and processing for a specific US Army Corps of Engineers activity and indicates the general existing conditions. The user is responsible for the accuracy, completeness, and reliability of the data for other than its intended purpose. The user is responsible for the accuracy, completeness, and reliability of the data for other than its intended purpose.

DISCLAIMER: The United States Government furnishes these data and the recipient accepts and uses them with the express understanding that the data are not to be used for any purpose other than that for which they were provided. The recipient may not transfer these data to others without also transferring this disclaimer.

U.S. ARMY CORPS OF ENGINEERS DETROIT DISTRICT		
Submitted By:	Surveyed By:	Checked By:
Recommended By:	Plotted By:	
Approved:	Chief, Survey Section	Chief, Technical Services

Black River, Port Huron, MI
Black River Port Huron
PH_01_BRV_20201120_CS
20 November 2020

Sheet Reference Number
5 of 10

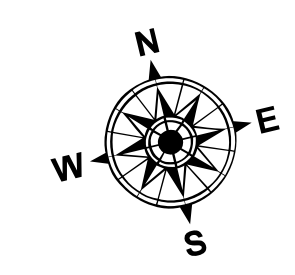


LEGEND

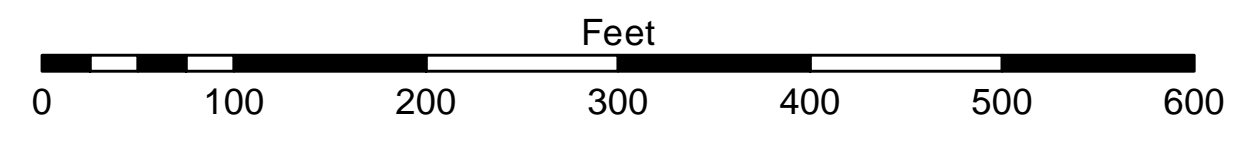
- Cable Submarine
- - - Cable Overhead
- Placement Area
- ⊥ Beacon, General
- Contour Lines
- ▭ Channel Limits

SOUNDING LEGEND

- LESS THAN PROJECT DEPTH
- PROJECT DEPTH
- PROJECT DEPTH +1'
- PROJECT DEPTH +2'
- PROJECT DEPTH +3'
- PROJECT DEPTH +4'
- PROJECT DEPTH +5'



1 inch = 100 feet



NOTES: THE SOUNDINGS AND ASSOCIATED INFORMATION REPRESENTED HEREIN ARE THE RESULT OF SURVEYS MADE ON THE DATE AS INDICATED AND CAN ONLY BE CONSIDERED REPRESENTATIVE OF THE GENERAL CONDITIONS EXISTING AT THE TIME OF SURVEY.

THE SOUNDINGS DEPICTED HEREIN ARE EXPRESSED IN U.S. SURVEY FEET AND TENTHS THEREOF AND ARE REFERENCED TO THE FOLLOWING DATUMS:
 HORIZONTAL: MICHIGAN STATE PLANE COORDINATE SYSTEM, MICHIGAN SOUTH ZONE #2113, NORTH AMERICAN DATUM (NAD) OF 1983.
 VERTICAL: INTERNATIONAL GREAT LAKES DATUM (IGLD) OF 1985.

THE ABOVE SURVEY WAS CONDUCTED USING THE U.S.A.C.E. SURVEY VESSEL LAUNCH 3053 EMPLOYING THE FOLLOWING COMPONENTS:
 POSITIONING: APPLANIX POS-MV4 WMARINESTAR GNSS
 MOTION COMPENSATION: APPLANIX POS-MV4
 SONAR: ODOM CV-300
 SOFTWARE: HYPACK

TIDE CORRECTION VALUES REFERENCED FROM:
 A PAINT MARK ON SEAWALL DESCRIBED AS 'TBM LXIE.' LOCATED ON TOP OF STEEL WALL SOUTH EAST OF LAUNCH (SHEET 2). ELEVATION IGLD 85 = 582.27.
 NOAA TIDE GAGE "MOUTH OF THE BLACK RIVER, MI" (#9014090).



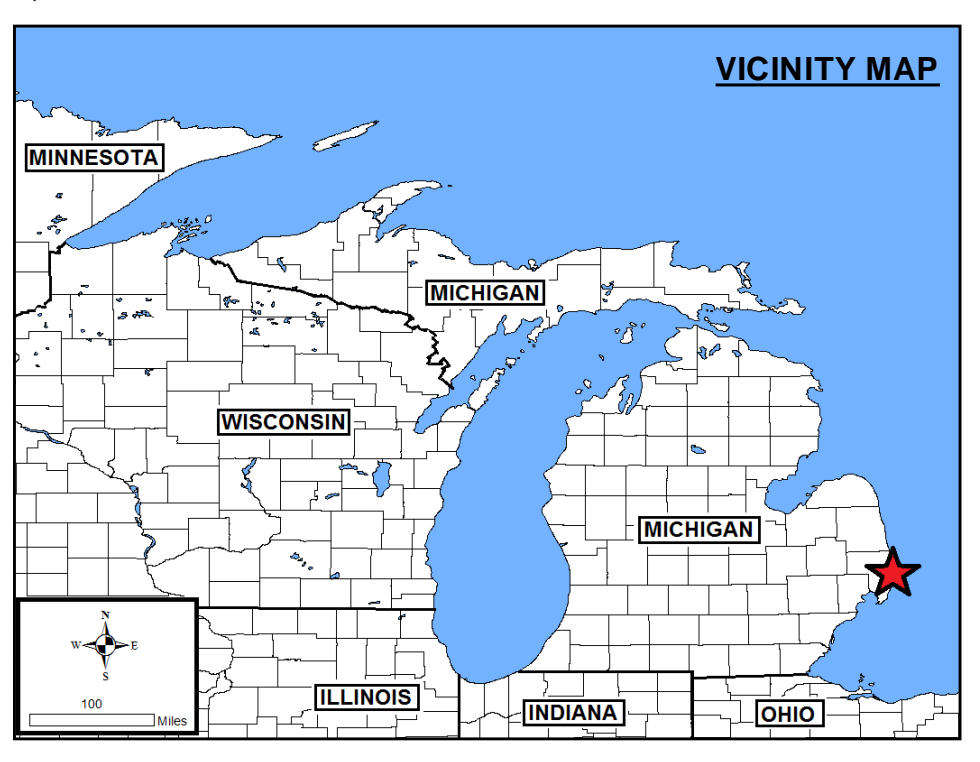
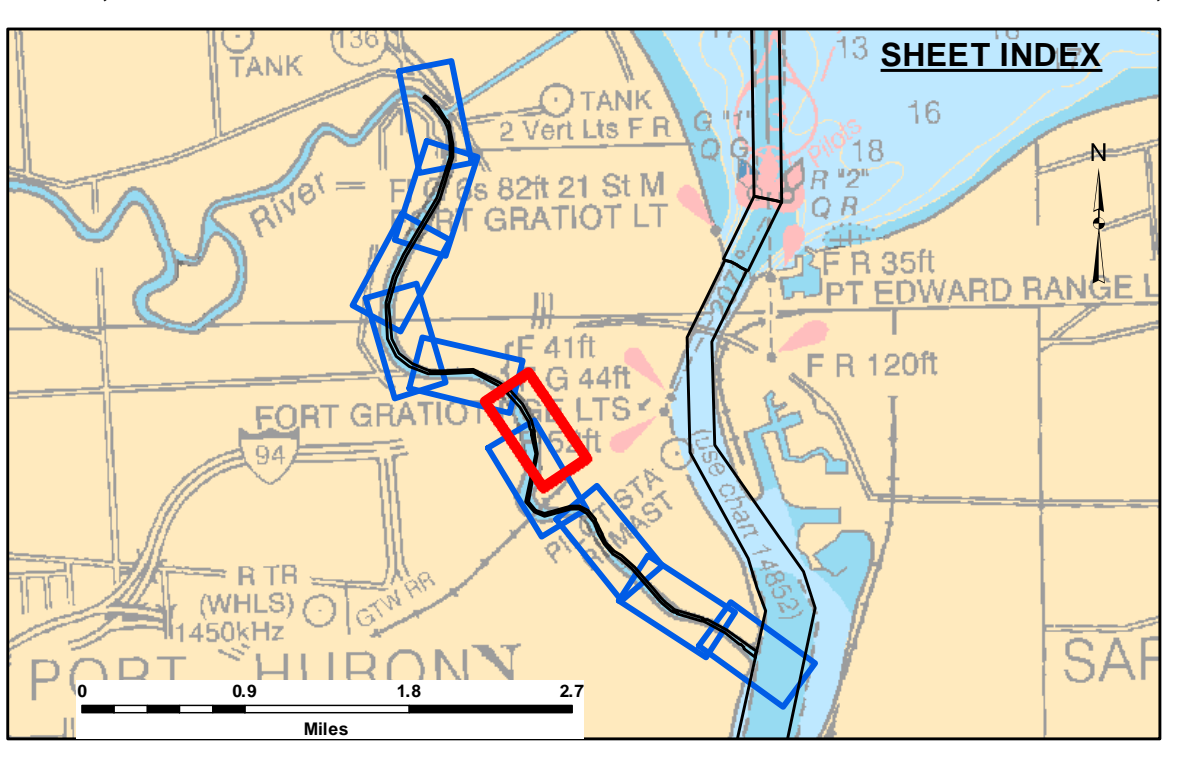
Disclaimer: The data represents the results of data collection and processing for a specific US Army Corps of Engineers activity and indicates the general existing conditions. Engineers assume no liability for the accuracy, completeness, or implied warranty of the data for other than its intended purpose. The user is responsible for the accuracy of any of the application of the data for other than its intended purpose.

Access Constraints: The United States Government sponsors these data and the recipient accepts and uses them with the express understanding that they are provided for informational purposes only. The data is not to be used for any purpose other than that for which it was intended. These data are provided to the recipient for their use and are not to be distributed, reproduced, or modified without the express written consent of the United States Government. The recipient may not transfer these data to others without also transferring this Disclaimer.

U.S. ARMY CORPS OF ENGINEERS DETROIT DISTRICT		
Submitted:	Surveyed By:	
Recommended:	Plotted By:	
Approved:	Chief, Survey Section	Chief, Technical Services

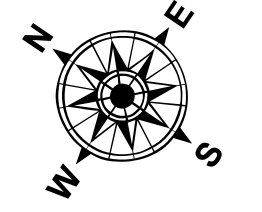
Black River, Port Huron, MI
Black River Port Huron
PH_01_BRV_20201120_CS
20 November 2020

Sheet Reference Number
6 of 10

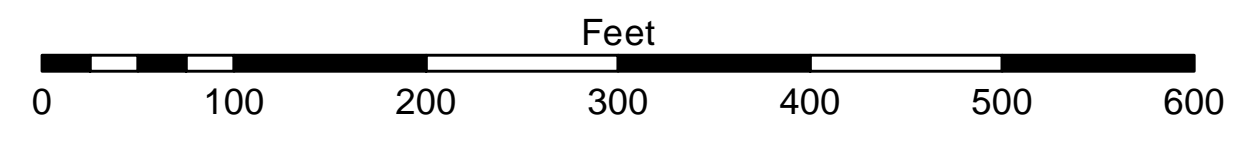


- LEGEND**
- Cable Submarine
 - - - Cable Overhead
 - Placement Area
 - ⊥ Beacon, General
 - Contour Lines
 - ▭ Channel Limits

- SOUNDING LEGEND**
- LESS THAN PROJECT DEPTH
 - PROJECT DEPTH
 - PROJECT DEPTH +1'
 - PROJECT DEPTH +2'
 - PROJECT DEPTH +3'
 - PROJECT DEPTH +4'
 - PROJECT DEPTH +5'



1 inch = 100 feet

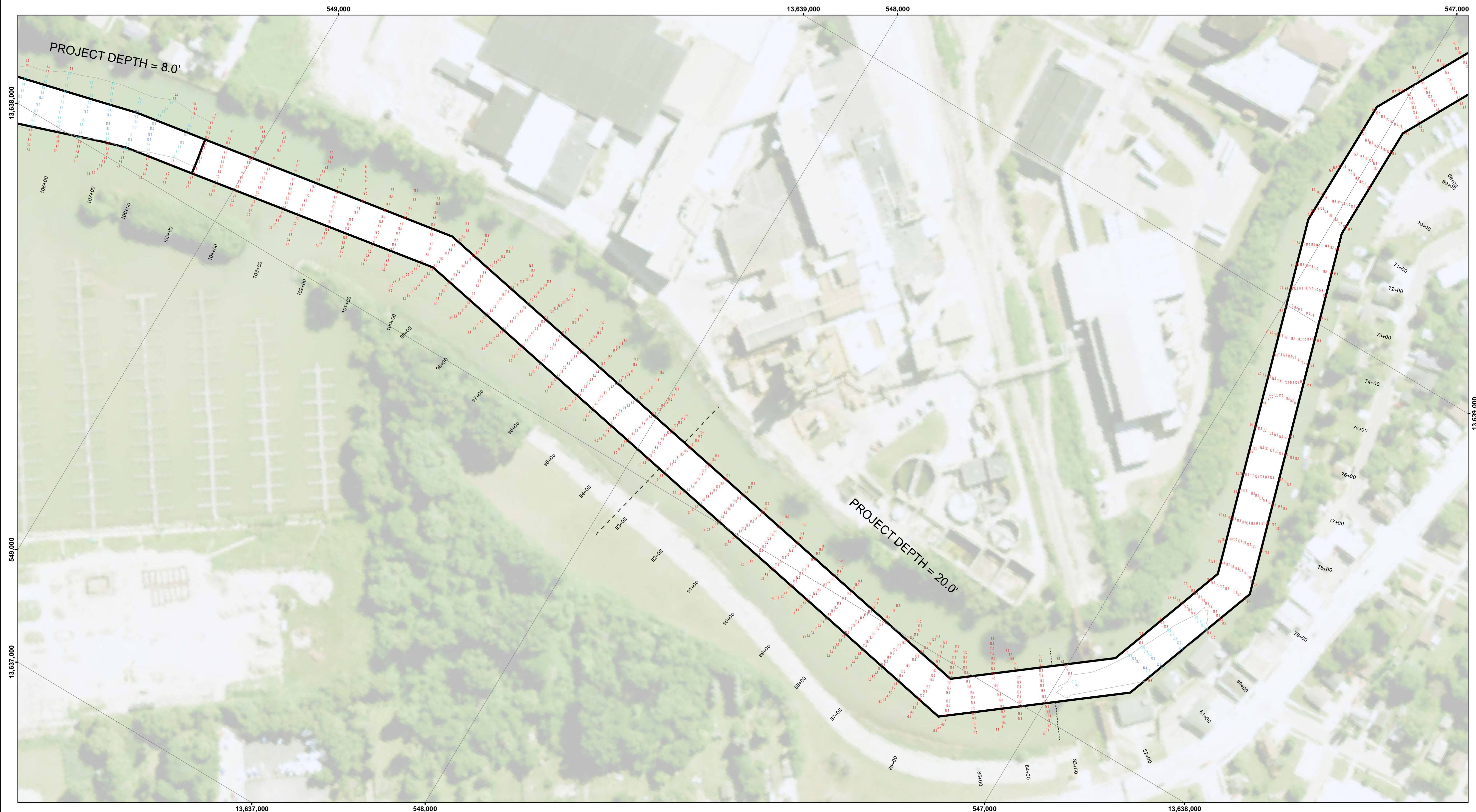


NOTES: THE SOUNDINGS AND ASSOCIATED INFORMATION REPRESENTED HEREIN ARE THE RESULT OF SURVEYS MADE ON THE DATE AS INDICATED AND CAN ONLY BE CONSIDERED REPRESENTATIVE OF THE GENERAL CONDITIONS EXISTING AT THE TIME OF SURVEY.

THE SOUNDINGS DEPICTED HEREIN ARE EXPRESSED IN U.S. SURVEY FEET AND TENTHS THEREOF AND ARE REFERENCED TO THE FOLLOWING DATUMS:
 HORIZONTAL: MICHIGAN STATE PLANE COORDINATE SYSTEM, MICHIGAN SOUTH ZONE #2113, NORTH AMERICAN DATUM (NAD) OF 1983.
 VERTICAL: INTERNATIONAL GREAT LAKES DATUM (IGLD) OF 1985.

THE ABOVE SURVEY WAS CONDUCTED USING THE U.S.A.C.E. SURVEY VESSEL LAUNCH 3053 EMPLOYING THE FOLLOWING COMPONENTS:
 POSITIONING: APPLANIX POS-MV4 WMARINESTAR GNSS
 MOTION COMPENSATION: APPLANIX POS-MV4
 SONAR: ODOM CV-300
 SOFTWARE: HYPACK

TIDE CORRECTION VALUES REFERENCED FROM:
 A PAINT MARK ON SEAWALL DESCRIBED AS 'TBM LXIE.' LOCATED ON TOP OF STEEL WALL SOUTH EAST OF LAUNCH (SHEET 2). ELEVATION IGLD 85 = 582.27.
 NOAA TIDE GAGE "MOUTH OF THE BLACK RIVER, MI" (#9014090).



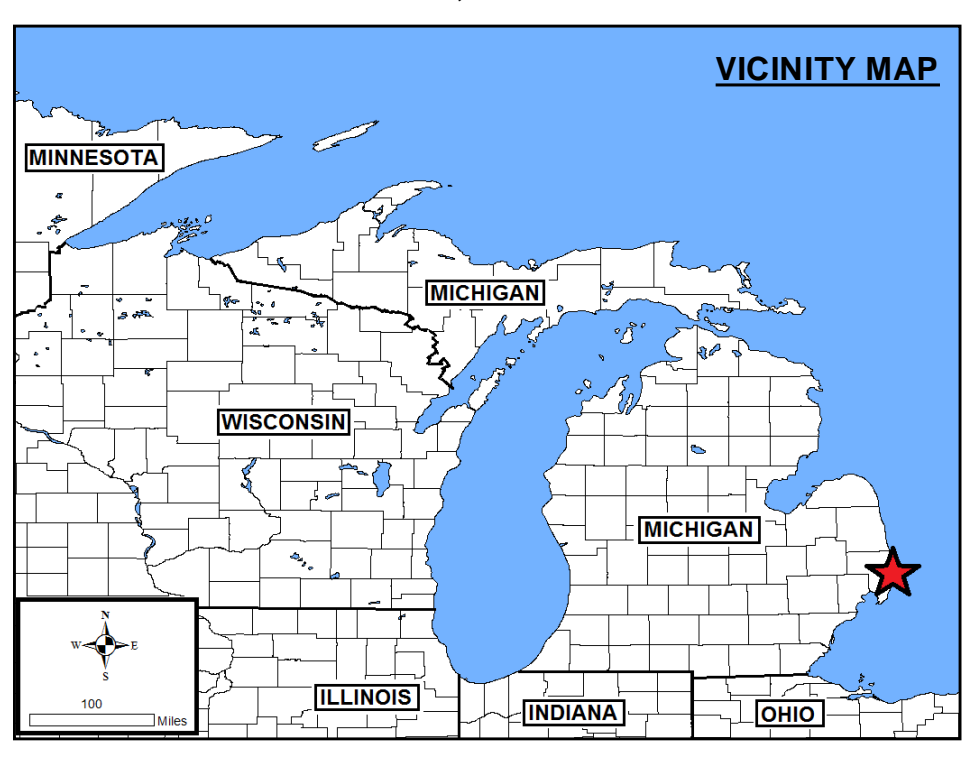
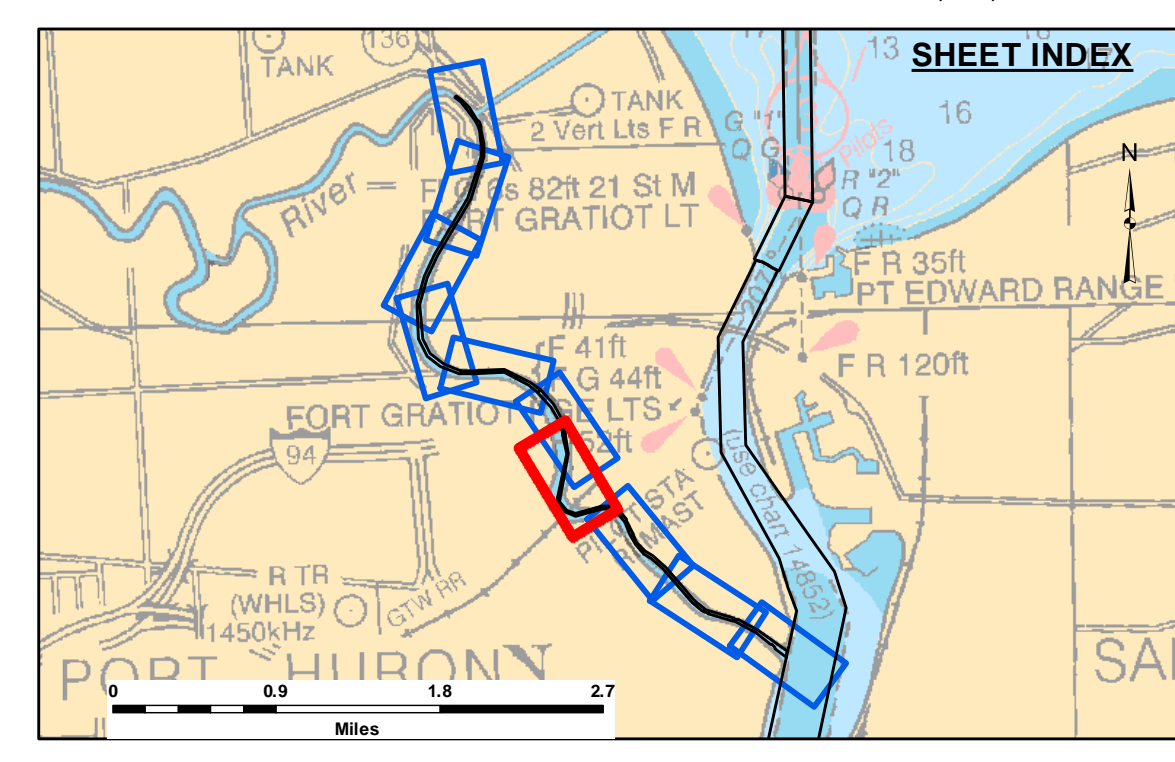
Disclaimer: The data represents the results of data collection and processing for a specific US Army Corps of Engineers project and is not intended for general use. The user is responsible for the accuracy and reliability of the data for other than its intended purpose. The United States Government disclaims any liability for the use of this data for purposes not intended by the Government. The recipient may not transfer this data to others without also transferring this disclaimer.

U.S. ARMY CORPS OF ENGINEERS DETROIT DISTRICT		
Submitted:	Surveyed By:	
Recommended:	Plotted By:	
Approved:	Checked By:	

Black River, Port Huron, MI
Black River Port Huron
PH_01_BRV_20201120_CS
20 November 2020

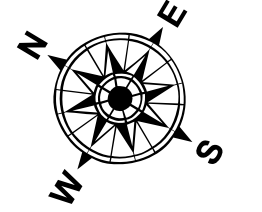
Sheet Reference Number
7 of 10

Revision Number:
4.1-20191105

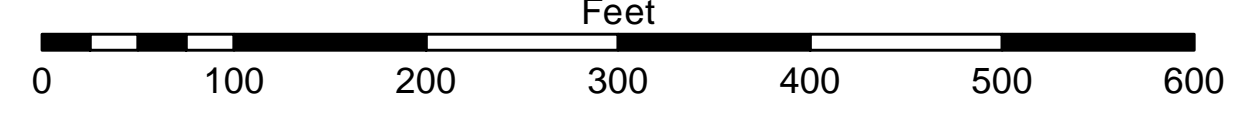


- LEGEND**
- Cable Submarine
 - - - Cable Overhead
 - Placement Area
 - ⊥ Beacon, General
 - Contour Lines
 - ▭ Channel Limits

- SOUNDING LEGEND**
- LESS THAN PROJECT DEPTH
 - PROJECT DEPTH
 - PROJECT DEPTH +1'
 - PROJECT DEPTH +2'
 - PROJECT DEPTH +3'
 - PROJECT DEPTH +4'
 - PROJECT DEPTH +5'



1 inch = 100 feet



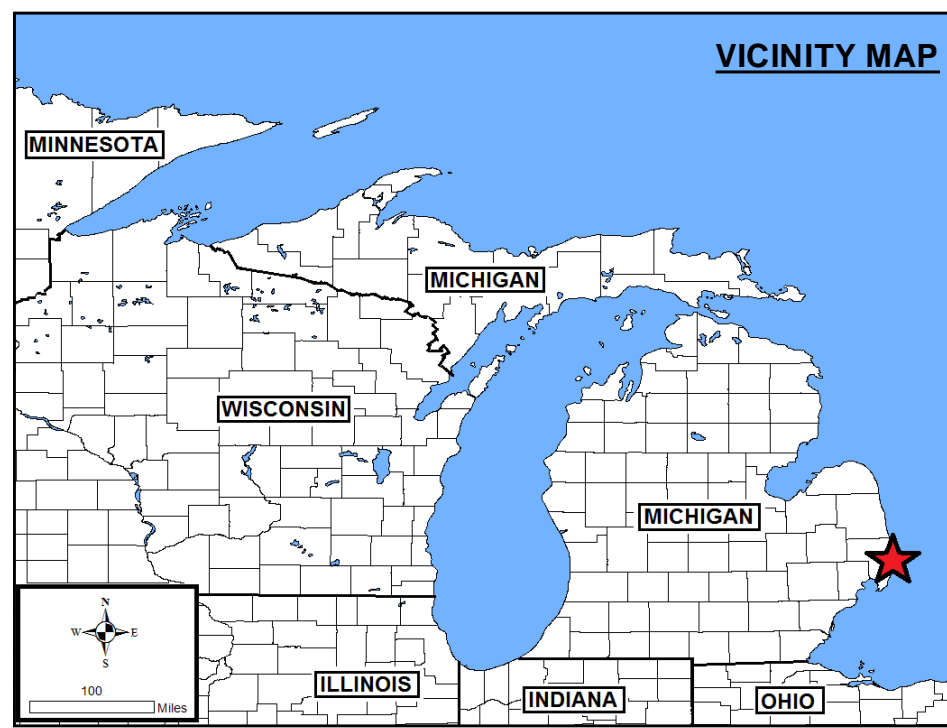
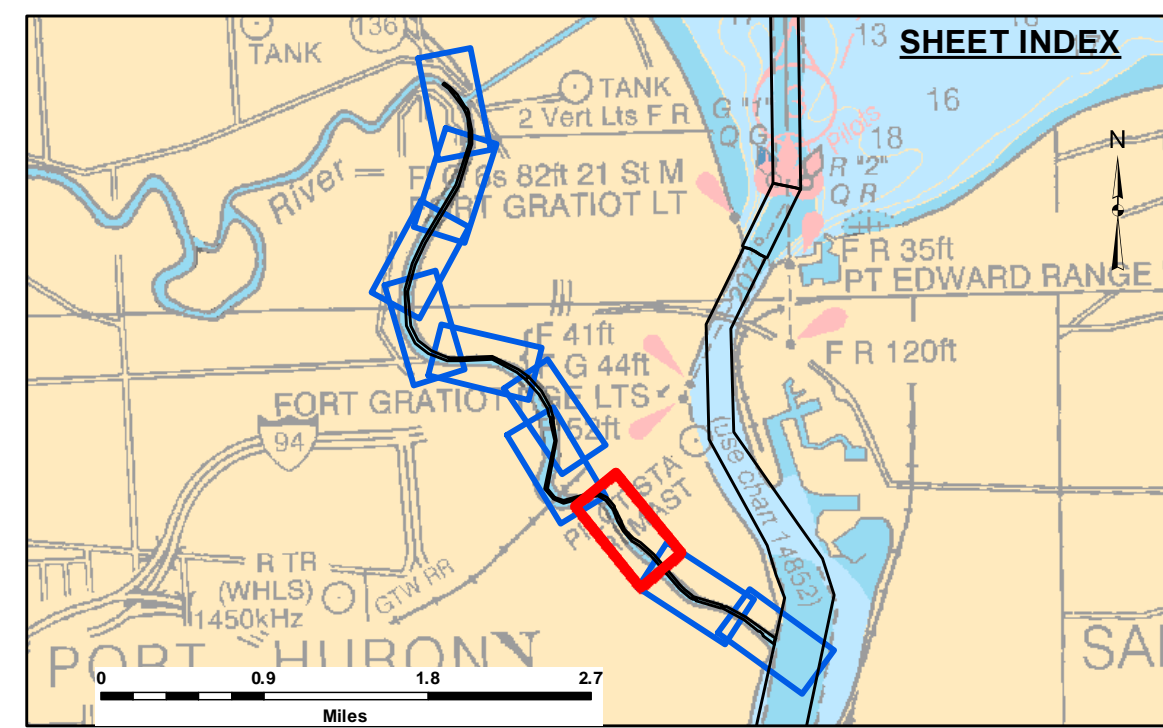
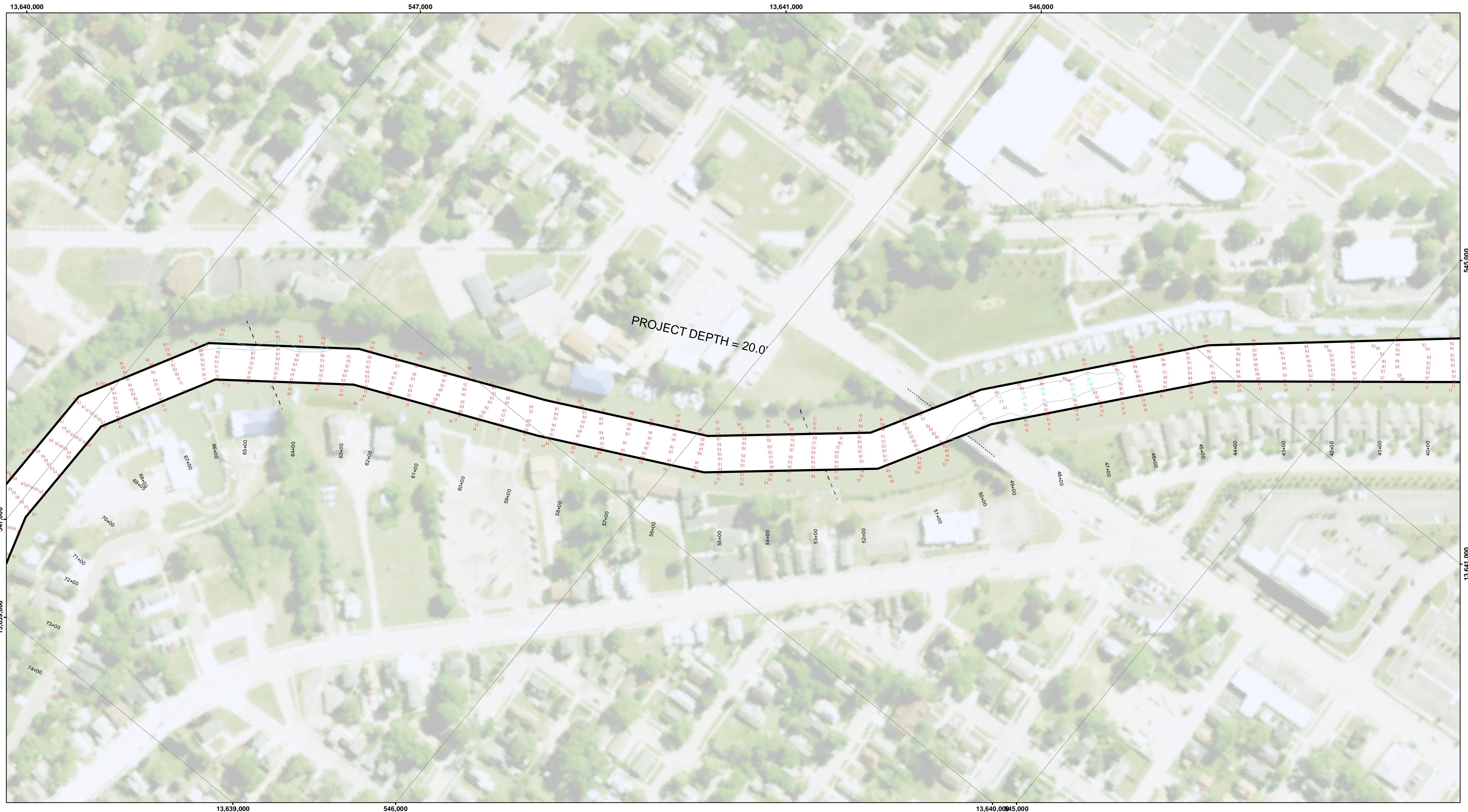
NOTES: THE SOUNDINGS AND ASSOCIATED INFORMATION REPRESENTED HEREIN ARE THE RESULT OF SURVEYS MADE ON THE DATE AS INDICATED AND CAN ONLY BE CONSIDERED REPRESENTATIVE OF THE GENERAL CONDITIONS EXISTING AT THE TIME OF SURVEY.

THE SOUNDINGS DEPICTED HEREIN ARE EXPRESSED IN U.S. SURVEY FEET AND TENTHS THEREOF AND ARE REFERENCED TO THE FOLLOWING DATUMS:
HORIZONTAL: MICHIGAN STATE PLANE COORDINATE SYSTEM, MICHIGAN SOUTH ZONE #2113, NORTH AMERICAN DATUM (NAD) OF 1983.
VERTICAL: INTERNATIONAL GREAT LAKES DATUM (IGLD) OF 1985.

THE ABOVE SURVEY WAS CONDUCTED USING THE U.S.A.C.E. SURVEY VESSEL LAUNCH 3053 EMPLOYING THE FOLLOWING COMPONENTS:

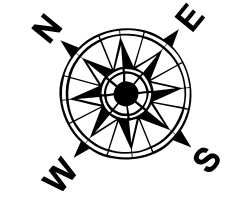
POSITIONING: APPLANIX POS-MV4 WMARINESTAR GNSS
MOTION COMPENSATION: APPLANIX POS-MV4
SONAR: ODOM CV-300
SOFTWARE: HYPACK

TIDE CORRECTION VALUES REFERENCED FROM:
A PAINT MARK ON SEAWALL DESCRIBED AS 'TBM LXIE.' LOCATED ON TOP OF STEEL WALL SOUTH EAST OF LAUNCH (SHEET 2). ELEVATION IGLD 85 = 582.27.
NOAA TIDE GAGE "MOUTH OF THE BLACK RIVER, MI" (#9014090).

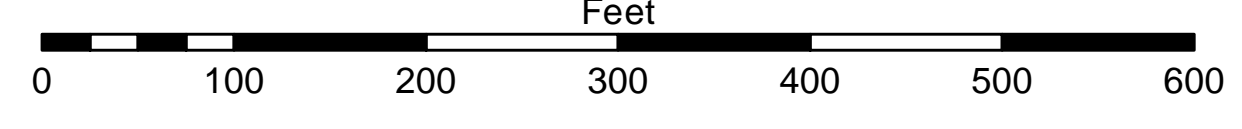


- LEGEND**
- Cable Submarine
 - - - Cable Overhead
 - Placement Area
 - ⊥ Beacon, General
 - Contour Lines
 - ▭ Channel Limits

- SOUNDING LEGEND**
- LESS THAN PROJECT DEPTH
 - PROJECT DEPTH
 - PROJECT DEPTH +1'
 - PROJECT DEPTH +2'
 - PROJECT DEPTH +3'
 - PROJECT DEPTH +4'
 - PROJECT DEPTH +5'



1 inch = 100 feet



NOTES: THE SOUNDINGS AND ASSOCIATED INFORMATION REPRESENTED HEREIN ARE THE RESULT OF SURVEYS MADE ON THE DATE AS INDICATED AND CAN ONLY BE CONSIDERED REPRESENTATIVE OF THE GENERAL CONDITIONS EXISTING AT THE TIME OF SURVEY.

THE SOUNDINGS DEPICTED HEREIN ARE EXPRESSED IN U.S. SURVEY FEET AND TENTHS THEREOF AND ARE REFERENCED TO THE FOLLOWING DATUMS:
 HORIZONTAL: MICHIGAN STATE PLANE COORDINATE SYSTEM, MICHIGAN SOUTH ZONE #2113, NORTH AMERICAN DATUM (NAD) OF 1983.
 VERTICAL: INTERNATIONAL GREAT LAKES DATUM (IGLD) OF 1985.

THE ABOVE SURVEY WAS CONDUCTED USING THE U.S.A.C.E. SURVEY VESSEL LAUNCH 3053 EMPLOYING THE FOLLOWING COMPONENTS:
 POSITIONING: APPLANIX POS-MV4 WMARINESTAR GNSS
 MOTION COMPENSATION: APPLANIX POS-MV4
 SONAR: ODOM CV-300
 SOFTWARE: HYPACK

TIDE CORRECTION VALUES REFERENCED FROM:
 A PAINT MARK ON SEAWALL DESCRIBED AS 'TBM LXIE.' LOCATED ON TOP OF STEEL WALL SOUTH EAST OF LAUNCH (SHEET 2). ELEVATION IGLD 85 = 582.27.
 NOAA TIDE GAGE "MOUTH OF THE BLACK RIVER, MI" (#9014090).



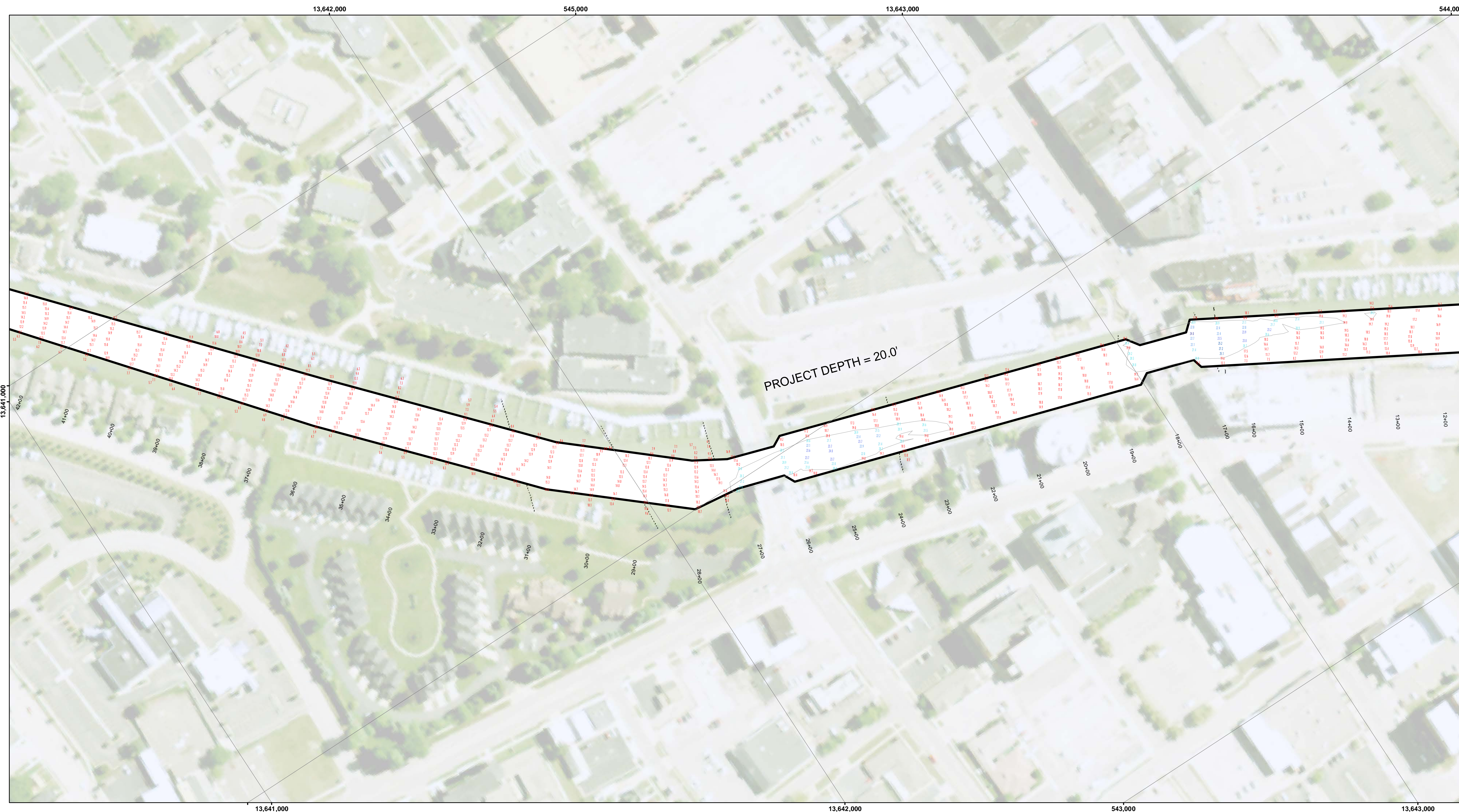
DISCLAIMER: The United States Government furnishes these data and the recipient accepts and uses them with the express understanding that the data are not to be used for any purpose other than that for which they were originally prepared, or for any purpose for which they were not specifically intended. The United States Government makes no warranty, express or implied, concerning the accuracy, completeness, reliability, usability, or suitability for any particular purpose of the data. The recipient is responsible for the accuracy of any of the application of the data for other than its intended purpose.

ACCESS CONSTRAINTS: The United States Government furnishes these data and the recipient accepts and uses them with the express understanding that the data are not to be used for any purpose other than that for which they were originally prepared, or for any purpose for which they were not specifically intended. The United States Government makes no warranty, express or implied, concerning the accuracy, completeness, reliability, usability, or suitability for any particular purpose of the data. The recipient is responsible for the accuracy of any of the application of the data for other than its intended purpose.

U.S. ARMY CORPS OF ENGINEERS DETROIT DISTRICT		
Submitted By:	Surveyed By:	Checked By:
Recommended By:	Plotted By:	
Chief, Survey Section		
Approved:	Chief, Technical Services	

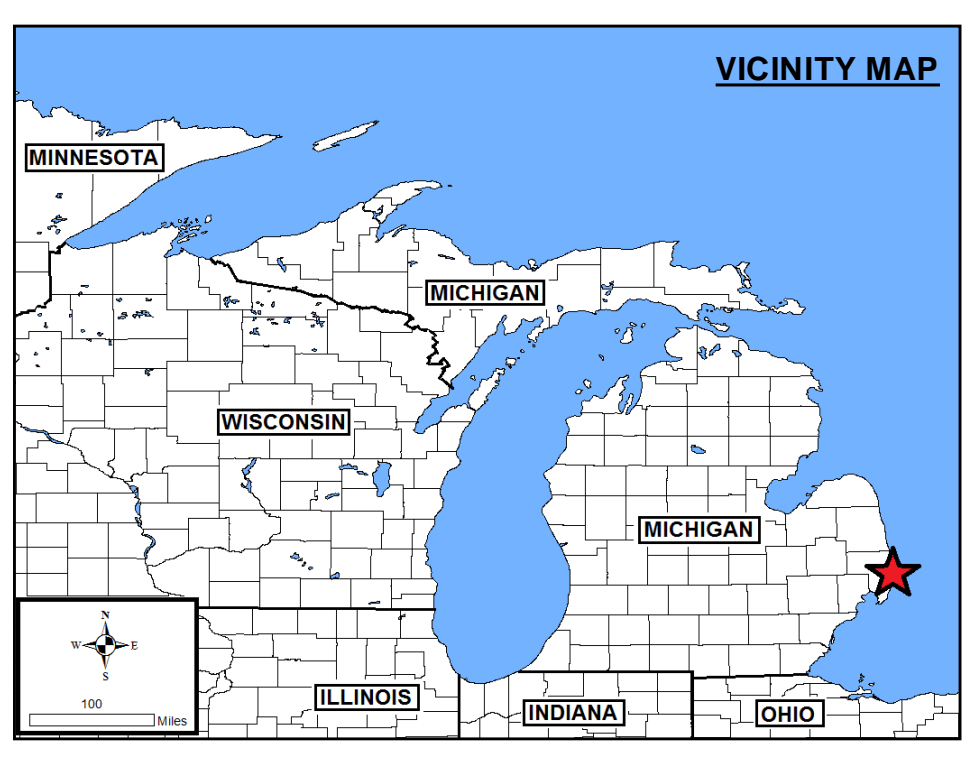
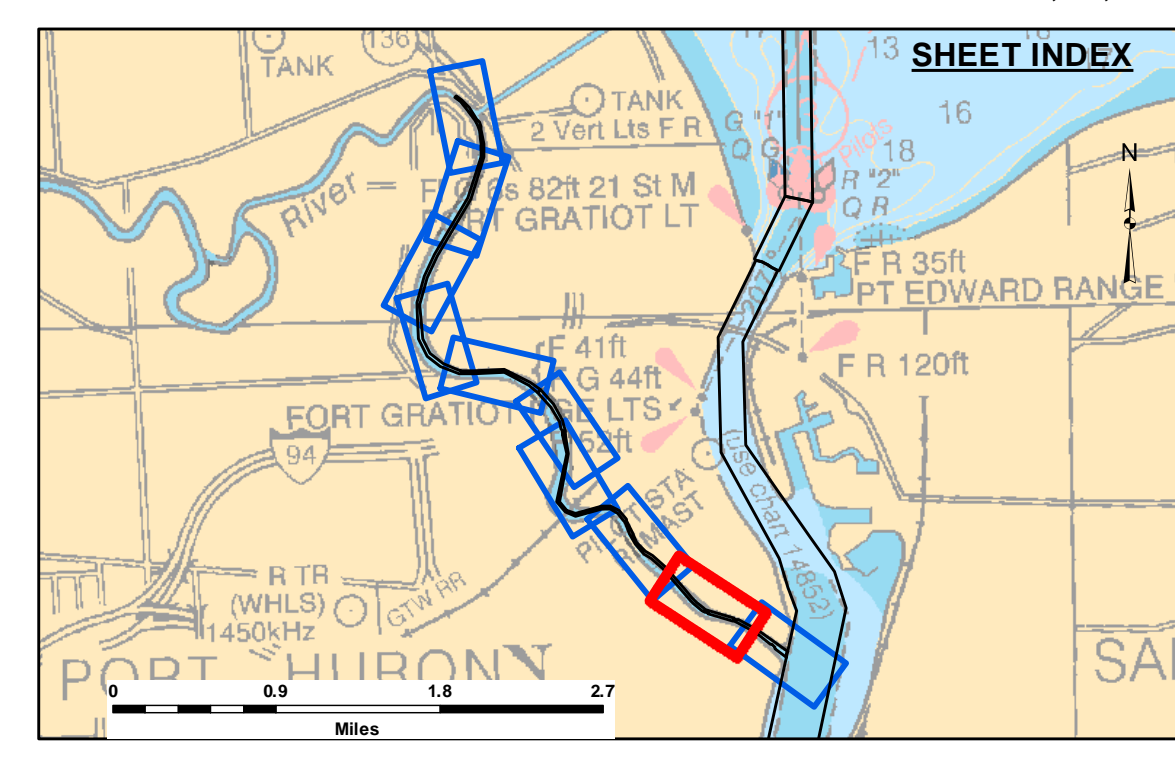
Black River, Port Huron, MI
Black River Port Huron
PH_01_BRV_20201120_CS
20 November 2020

Sheet Reference Number
8 of 10



DISCLAIMER: The data represents the results of data collection and processing for a specific US Army Corps of Engineers activity and indicates the general existing conditions, accuracy, and reliability of the data for other than its intended purpose. The user is responsible for the accuracy, completeness, and reliability of the data for other than its intended purpose. These data are provided to the recipient for their use and are not to be used for any other purpose without the express written consent of the Government. The recipient may not transfer these data to others without also transferring this Disclaimer.

U.S. ARMY CORPS OF ENGINEERS DETROIT DISTRICT		
Submitted By:	Surveyed By:	Checked By:
Recommended By:	Plotted By:	
Approved:	Chief, Survey Section	Chief, Technical Services

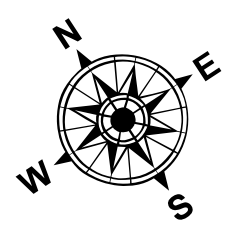


LEGEND

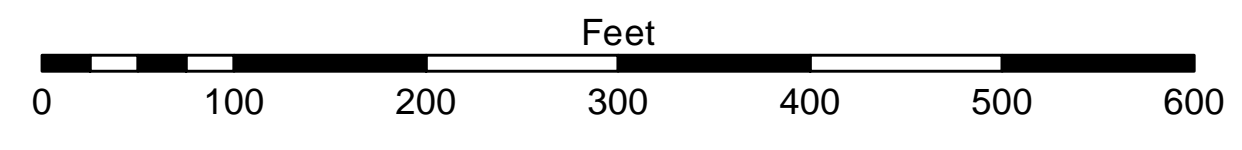
- Cable Submarine
- - - Cable Overhead
- Placement Area
- ⊥ Beacon, General
- Contour Lines
- ▭ Channel Limits

SOUNDING LEGEND

- LESS THAN PROJECT DEPTH
- PROJECT DEPTH
- PROJECT DEPTH +1'
- PROJECT DEPTH +2'
- PROJECT DEPTH +3'
- PROJECT DEPTH +4'
- PROJECT DEPTH +5'



1 inch = 100 feet



NOTES: THE SOUNDINGS AND ASSOCIATED INFORMATION REPRESENTED HEREIN ARE THE RESULT OF SURVEYS MADE ON THE DATE AS INDICATED AND CAN ONLY BE CONSIDERED REPRESENTATIVE OF THE GENERAL CONDITIONS EXISTING AT THE TIME OF SURVEY.

THE SOUNDINGS DEPICTED HEREIN ARE EXPRESSED IN U.S. SURVEY FEET AND TENTHS THEREOF AND ARE REFERENCED TO THE FOLLOWING DATUMS:
 HORIZONTAL: MICHIGAN STATE PLANE COORDINATE SYSTEM, MICHIGAN SOUTH ZONE #2113, NORTH AMERICAN DATUM (NAD) OF 1983.
 VERTICAL: INTERNATIONAL GREAT LAKES DATUM (IGLD) OF 1985.

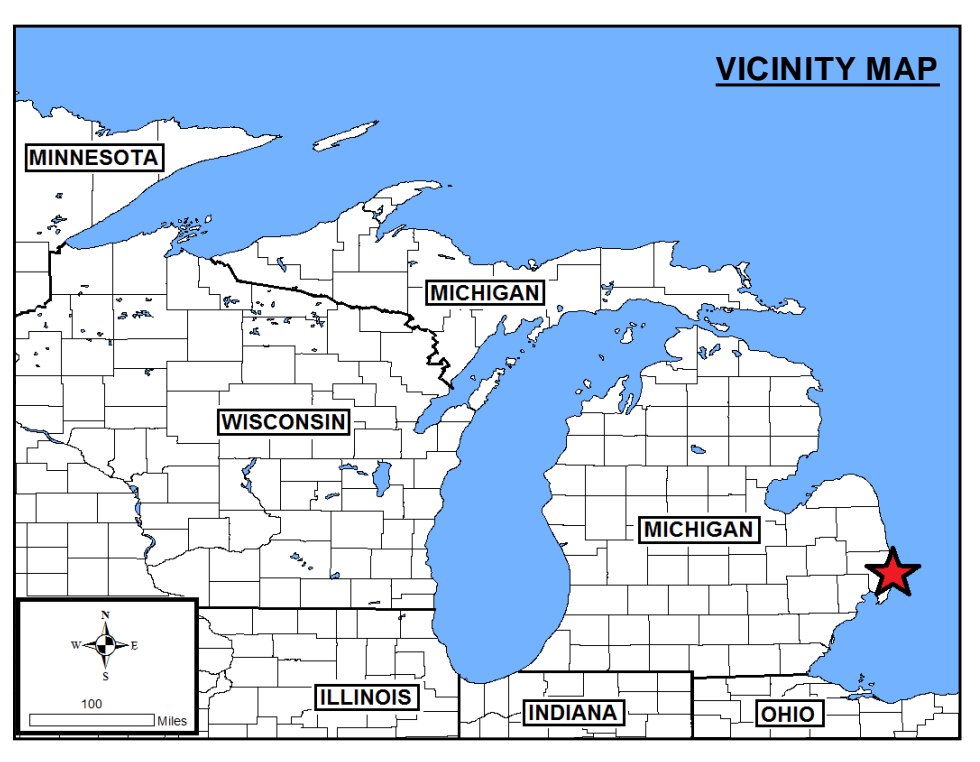
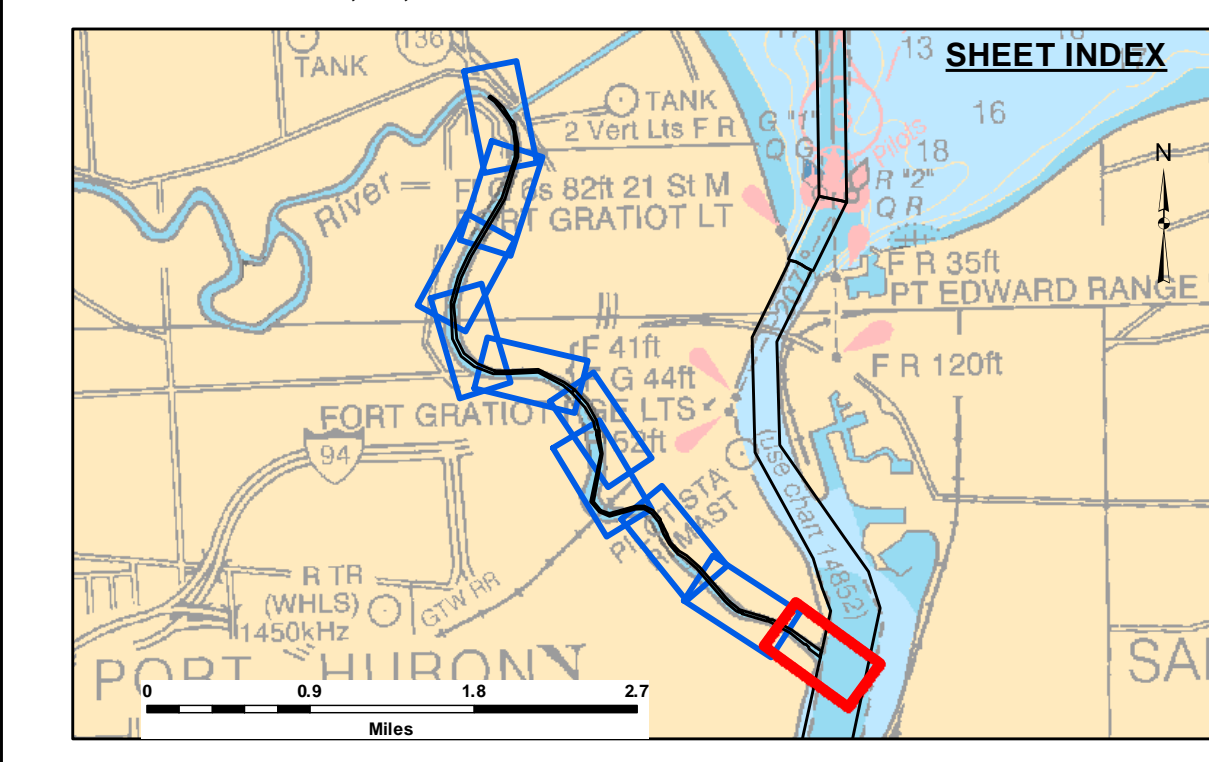
THE ABOVE SURVEY WAS CONDUCTED USING THE U.S.A.C.E. SURVEY VESSEL LAUNCH 3053 EMPLOYING THE FOLLOWING COMPONENTS:

POSITIONING: APPLANIX POS-MV4 WMARINESTAR GNSS
 MOTION COMPENSATION: APPLANIX POS-MV4
 SONAR: ODOM CV-300
 SOFTWARE: HYPACK

TIDE CORRECTION VALUES REFERENCED FROM:
 A PAINT MARK ON SEAWALL DESCRIBED AS 'TBM LXIE.' LOCATED ON TOP OF STEEL WALL SOUTH EAST OF LAUNCH (SHEET 2). ELEVATION IGLD 85 = 582.27.
 NOAA TIDE GAGE "MOUTH OF THE BLACK RIVER, MI" (#9014090).

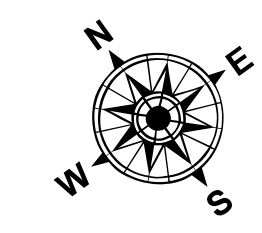
Black River, Port Huron, MI
Black River Port Huron
PH_01_BRV_20201120_CS
20 November 2020

Sheet Reference Number
9 of 10

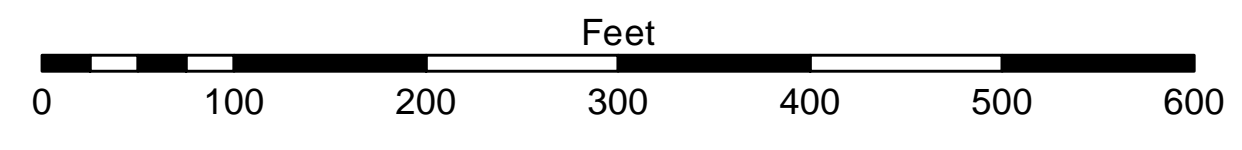


- LEGEND**
- Cable Submarine
 - - - Cable Overhead
 - Placement Area
 - ⊥ Beacon, General
 - Contour Lines
 - ▭ Channel Limits

- SOUNDING LEGEND**
- LESS THAN PROJECT DEPTH
 - PROJECT DEPTH
 - PROJECT DEPTH +1'
 - PROJECT DEPTH +2'
 - PROJECT DEPTH +3'
 - PROJECT DEPTH +4'
 - PROJECT DEPTH +5'



1 inch = 100 feet



NOTES: THE SOUNDINGS AND ASSOCIATED INFORMATION REPRESENTED HEREIN ARE THE RESULT OF SURVEYS MADE ON THE DATE AS INDICATED AND CAN ONLY BE CONSIDERED REPRESENTATIVE OF THE GENERAL CONDITIONS EXISTING AT THE TIME OF SURVEY.

THE SOUNDINGS DEPICTED HEREIN ARE EXPRESSED IN U.S. SURVEY FEET AND TENTHS THEREOF AND ARE REFERENCED TO THE FOLLOWING DATUMS:
 HORIZONTAL: MICHIGAN STATE PLANE COORDINATE SYSTEM, MICHIGAN SOUTH ZONE #2113, NORTH AMERICAN DATUM (NAD) OF 1983.
 VERTICAL: INTERNATIONAL GREAT LAKES DATUM (IGLD) OF 1985.

THE ABOVE SURVEY WAS CONDUCTED USING THE U.S.A.C.E. SURVEY VESSEL LAUNCH 3053 EMPLOYING THE FOLLOWING COMPONENTS:
 POSITIONING: APPLANIX POS-MV4 W/MARINESTAR GNSS
 MOTION COMPENSATION: APPLANIX POS-MV4
 SONAR: ODOM CV-300
 SOFTWARE: HYPACK

TIDE CORRECTION VALUES REFERENCED FROM:
 A PAINT MARK ON SEAWALL DESCRIBED AS 'TBM LXIE.' LOCATED ON TOP OF STEEL WALL SOUTH EAST OF LAUNCH (SHEET 2). ELEVATION IGLD 85 = 582.27.
 NOAA TIDE GAGE "MOUTH OF THE BLACK RIVER, MI" (#9014090).



DISCLAIMER: The United States Government furnishes these data and the recipient accepts and uses them with the express understanding that the United States Government makes no warranty, expressed or implied, concerning the accuracy, completeness, readability, usability, or suitability for any particular purpose of the data. The United States Government is not responsible for the results of any application of the data for other than its intended purpose.

Access Constraints: The United States Government furnishes these data and the recipient accepts and uses them with the express understanding that the United States Government makes no warranty, expressed or implied, concerning the accuracy, completeness, readability, usability, or suitability for any particular purpose of the data. The United States Government is not responsible for the results of any application of the data for other than its intended purpose.

U.S. ARMY CORPS OF ENGINEERS DETROIT DISTRICT		
Submitted:	Surveyed By:	
Recommended:	Plotted By:	
Approved:	Chief, Technical Services	

Black River, Port Huron, MI
Black River Port Huron
PH_01_BRV_20201120_CS
20 November 2020

Sheet Reference Number
10 of 10