

DISCLAIMER: The United States Government furnishes these data and the recipient accepts and uses them with the express understanding that the data are not to be used for any purpose other than that for which they were provided. The recipient may not transfer these data to others without also transferring this Disclaimer.

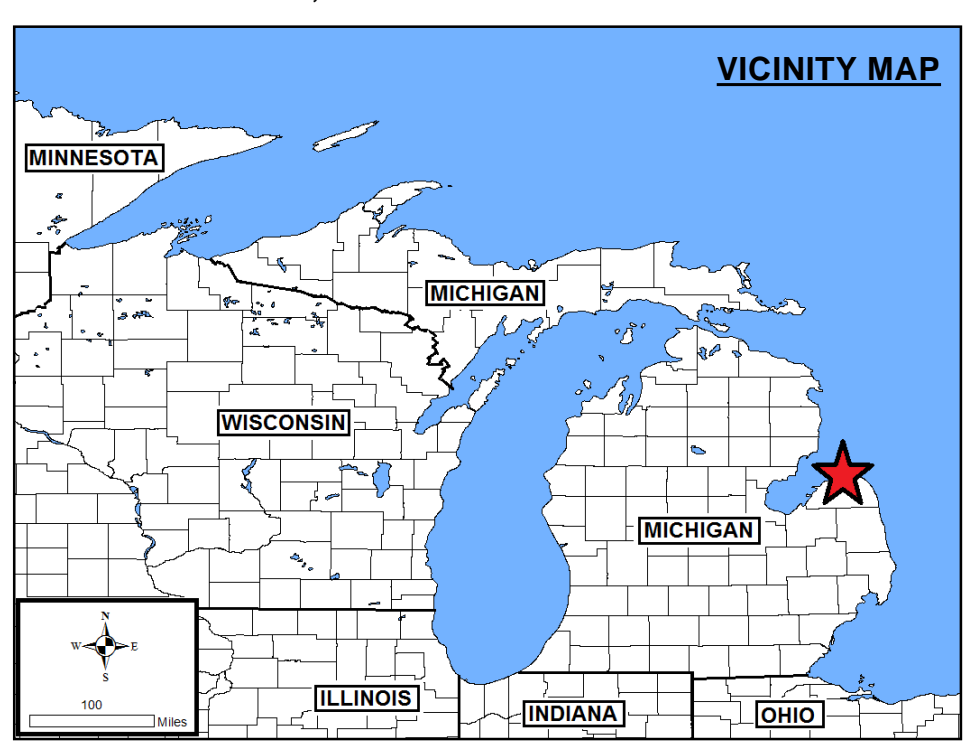
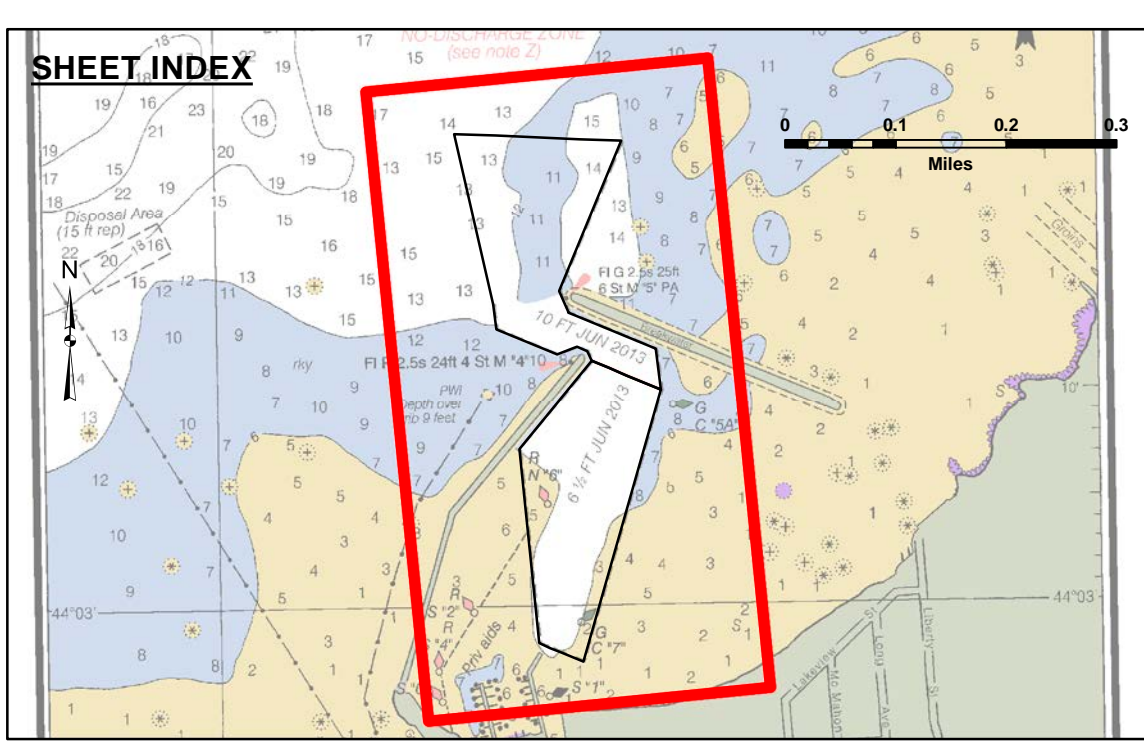
Access Constraints: The United States Government furnishes these data and the recipient accepts and uses them with the express understanding that the data are not to be used for any purpose other than that for which they were provided. The recipient may not transfer these data to others without also transferring this Disclaimer.

Public Use Liability: The data represent the results of data collection processing for a specific US Army Corps of Engineers activity and indicate the general existing conditions. Engineers activity and indicates the general existing conditions. The user is responsible for the results of any application of the data for other than its intended purpose.

| | | |
|--|---------------------------|--|
| U.S. ARMY CORPS OF ENGINEERS DETROIT DISTRICT | | |
| Submitted: | Surveyed By: | |
| Recommended: | Plotted By: | |
| Approved: | Chief, Survey Station | |
| | Chief, Technical Services | |

MICHIGAN
Port Austin Harbor
PA_01_STN_20230703_CS
03 July 2023

Sheet Reference Number
1 of 1

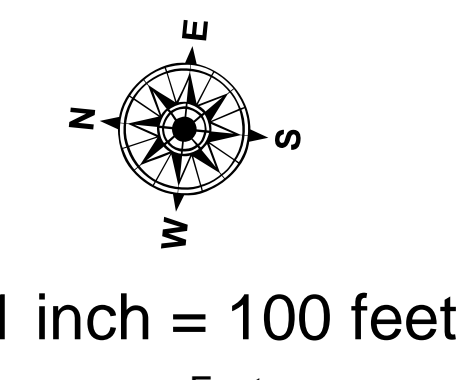


LEGEND

- Cable Submarine
- - - Cable Overhead
- Placement Area
- ⊥ Beacon, General
- Contour Lines
- ▭ Channel Limits

SOUNDING LEGEND

- Red: LESS THAN PROJECT DEPTH
- Light Blue: PROJECT DEPTH
- Medium Blue: PROJECT DEPTH +1'
- Dark Blue: PROJECT DEPTH +2'
- Dark Blue: PROJECT DEPTH +3'
- Dark Blue: PROJECT DEPTH +4'
- Dark Blue: PROJECT DEPTH +5'



NOTES:

- 1) THE SOUNDINGS AND ASSOCIATED INFORMATION REPRESENTED HEREIN ARE THE RESULT OF SURVEYS MADE ON THE DATE AS INDICATED AND CAN ONLY BE CONSIDERED REPRESENTATIVE OF THE GENERAL CONDITIONS EXISTING AT THE TIME OF SURVEY.
- 2) THE SOUNDINGS DEPICTED HEREIN ARE EXPRESSED IN U.S. SURVEY FEET AND TENTHS THEREOF AND ARE REFERENCED TO THE FOLLOWING DATUMS:
 HORIZONTAL: MICHIGAN STATE PLANE COORDINATE SYSTEM, MICHIGAN SOUTH ZONE #2113, NORTH AMERICAN DATUM (NAD) OF 1983.
 VERTICAL: INTERNATIONAL GREAT LAKES DATUM (IGLD) OF 1985.
- 3) THE ABOVE SURVEY WAS CONDUCTED USING THE U.S.A.C.E. SURVEY VESSEL LAUNCH 3053 EMPLOYING THE FOLLOWING COMPONENTS:
 POSITIONING: APPLANIX POS-MV 4 MARINESTAR G2+ GNSS .
 MOTION COMPENSATION: APPLANIX POS-MV 4
 SONAR: ODOM CV-300
 SOFTWARE: HYPACK 2018
- 4) TIDE VALUES ARE DERIVED FROM THE NATIONAL OCEANIC AND ATMOSPHERIC ADMINISTRATION (NOAA) WATER LEVEL STATION: ESSEXVILLE, MI (#9075035)

BACKGROUND IMAGERY SOURCE: ESRI