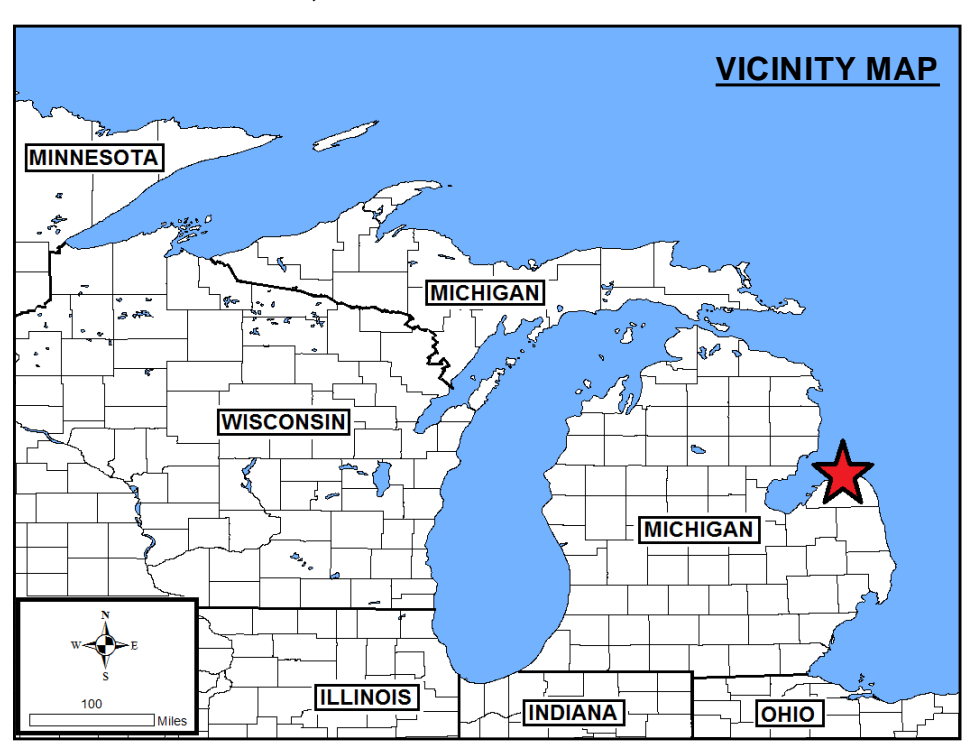
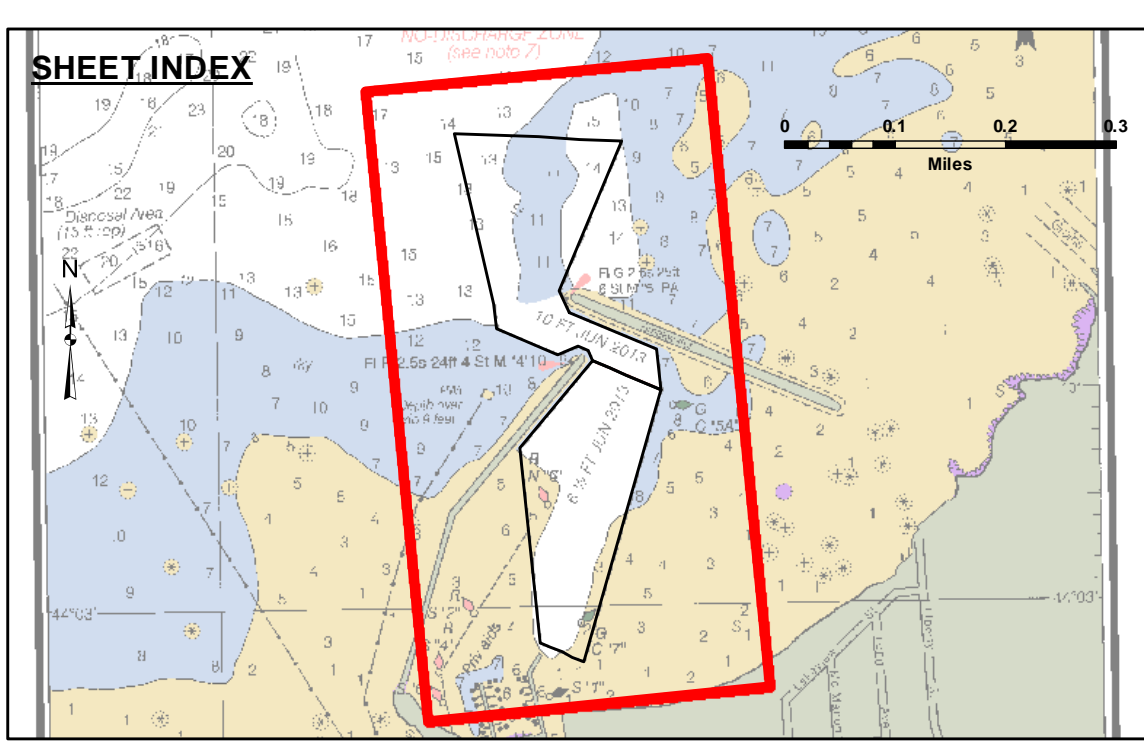




DISCLAIMER: The data represented by the symbols of data collection and the resulting bathymetric chart are the property of the U.S. Army Corps of Engineers and are provided for informational purposes only. The user is responsible for the accuracy, reliability, and completeness of the data for other than its intended purpose. The U.S. Army Corps of Engineers does not warrant the accuracy, reliability, or completeness of any of the data for other than its intended purpose.

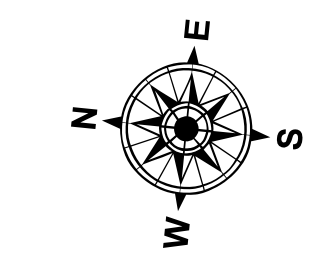
DISCLAIMER: The United States Government furnishes these data and the recipient accepts and uses them with the express understanding that the data are not to be used for any purpose other than that for which they were collected, and that the recipient is responsible for the accuracy, reliability, or completeness of the data for other than its intended purpose. The recipient may not transfer these data to others without also transferring this Disclaimer.

U.S. ARMY CORPS OF ENGINEERS DETROIT DISTRICT		
Submitted:	Surveyed By:	
Recommended:	Plotted By:	
Approved:	Chief, Technical Services	

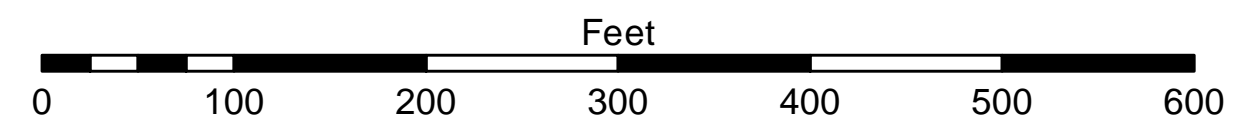


- LEGEND**
- Cable Submarine
 - - - Cable Overhead
 - Placement Area
 - ⊥ Beacon, General
 - Contour Lines
 - ▭ Channel Limits

- SOUNDING LEGEND**
- LESS THAN PROJECT DEPTH
 - PROJECT DEPTH
 - PROJECT DEPTH +1'
 - PROJECT DEPTH +2'
 - PROJECT DEPTH +3'
 - PROJECT DEPTH +4'
 - PROJECT DEPTH +5'



1 inch = 100 feet



NOTES:

- 1) THE SOUNDINGS AND ASSOCIATED INFORMATION REPRESENTED HEREIN ARE THE RESULT OF SURVEYS MADE ON THE DATE AS INDICATED AND CAN ONLY BE CONSIDERED REPRESENTATIVE OF THE GENERAL CONDITIONS EXISTING AT THE TIME OF SURVEY.
- 2) THE SOUNDINGS DEPICTED HEREIN ARE EXPRESSED IN U.S. SURVEY FEET AND TENTHS THEREOF AND ARE REFERENCED TO THE FOLLOWING DATUMS:
HORIZONTAL: MICHIGAN STATE PLANE COORDINATE SYSTEM, MICHIGAN SOUTH ZONE 2213, NORTH AMERICAN DATUM (NAD) OF 1983.
VERTICAL: INTERNATIONAL GREAT LAKES DATUM (IGLD) OF 1985.
- 3) THE ABOVE SURVEY WAS CONDUCTED USING THE U.S.A.C.E. SURVEY VESSEL SKIFF EMPLOYING THE FOLLOWING COMPONENTS:
POSITIONING: TRIMBLE BLUE WDGPS
MOTION COMPENSATION: N/A
SONAR: ODOM CV-300 (SINGLEBEAM)
SOFTWARE: HYPACK 2015
- 4) TIDE CORRECTION VALUES REFERENCED FROM THE TOP OF STEEL WALL DEFLECTION AT THE MOUTH OF BIRD CREEK LABELED 'TBM BOB.'
ELEVATION IGLD85 = 584.13 FT.
LAKE HURON L.W.D. = 577.50

MICHIGAN
Port Austin Harbor
PA_01_STN_20210520_CS
20 May 2021

Sheet Reference Number
1 of 1