

LEGEND

- Cable Submarine
- Cable Overhead
- Placement Area
- ⚓ Beacon, General
- Contour Lines
- ▭ Channel_Limits

SOUNDING LEGEND

- LESS THAN PROJECT DEPTH
- PROJECT DEPTH
- PROJECT DEPTH +1'
- PROJECT DEPTH +2'
- PROJECT DEPTH +3'
- PROJECT DEPTH +4'
- PROJECT DEPTH +5'

1 inch = 100 feet

Feet

0 100 200 300 400 500 600

- NOTES:**
- 1) THE CHARTED SOUNDINGS REPRESENT THE MINIMUM DEPTH MEASURED AT THE TIME OF THE SURVEY WITHIN THE 10' X 10' AREA CENTERED ON THE TEXT, DERIVED FROM A 1' X 1' AVERAGE DATASET AT CELL CENTER. THIS CHART SHOULD NOT BE USED FOR CHANNEL CLEARANCE OR VOLUME COMPUTATIONS. MINIMUM DEPTH DATA IS PRODUCED FOR STRIKE/SOAL REMOVAL OPERATIONS AND NOTICE TO NAVIGATION INTERESTS.
 - 2) THE INFORMATION DEPICTED ON THIS CHART REPRESENTS THE RESULTS OF SURVEYS MADE ON THE DATES INDICATED AND CAN ONLY BE CONSIDERED AS INDICATING THE GENERAL CONDITIONS PRESENT AT THAT TIME.
 - 3) ALL SOUNDING DEPTHS ARE REFERENCED TO INTERNATIONAL GREAT LAKES DATUM 1985 (IGLD 85) LOW WATER DATUM ELEVATION 601.1 FEET ABOVE MEAN WATER LEVEL AT RIMOUSKI, QUEBEC. WATER LEVEL READINGS WERE OBTAINED WITH REAL TIME KINEMATIC (RTK) GLOBAL POSITIONING SYSTEM (GPS) VALUES THAT HAVE BEEN VERIFIED TO MATCH AN AUTOMATED NOAA GAGE LOCATED AT ONTONAGON, MICHIGAN (9099044). DEPTHS ARE MEASURED USING AN R2 SONIC 2024 MULTIBEAM SONAR.
 - 4) HORIZONTAL POSITIONING IS DETERMINED USING REAL TIME KINEMATIC (RTK) GLOBAL NAVIGATION SATELLITE SYSTEM (GNSS) CORRECTIONS FROM A BASE STATION LOCATED AT US ARMY CORPS OF ENGINEERS (USACE) CONTROL POINT 1409. THE GPS RECEIVER IS MANUFACTURED BY APPLANIX MARINE POS/MV VER. 4.0.
 - 5) THE GRID COORDINATE SYSTEM IS MICHIGAN STATE PLANE, NORTH ZONE (2111), NORTH AMERICAN DATUM 1983 (NAD83), US SURVEY FOOT.
 - 6) PROJECT DEPTHS ARE 19.0 FEET, 22.0 FEET AND 23.0 FEET.
 - 7) IMAGERY SOURCED FROM: 2014 MICHIGAN NAIP IMAGERY.


**US Army Corps
of Engineers**
District: CELRE

DISCLAIMER

The data presented in this chart represents the results of data collection and processing for a specific US Army Corps of Engineers activity and indicates the general existing conditions. The data is not intended to be used for any other purpose, including but not limited to, navigation, engineering, or other applications. The user is responsible for the results of any of the application of the data for other than its intended purpose.

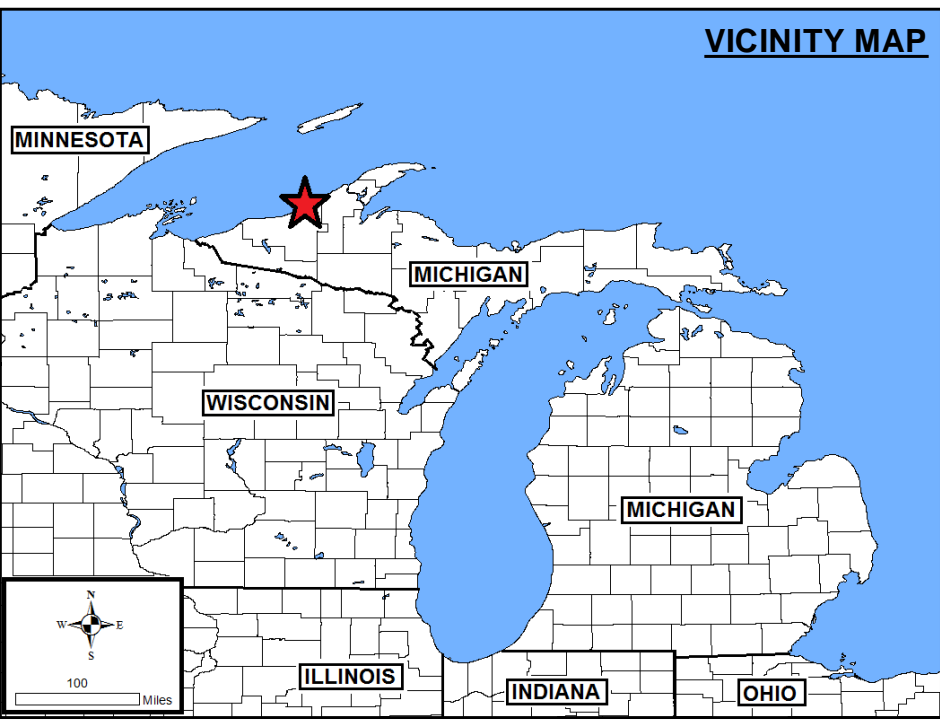
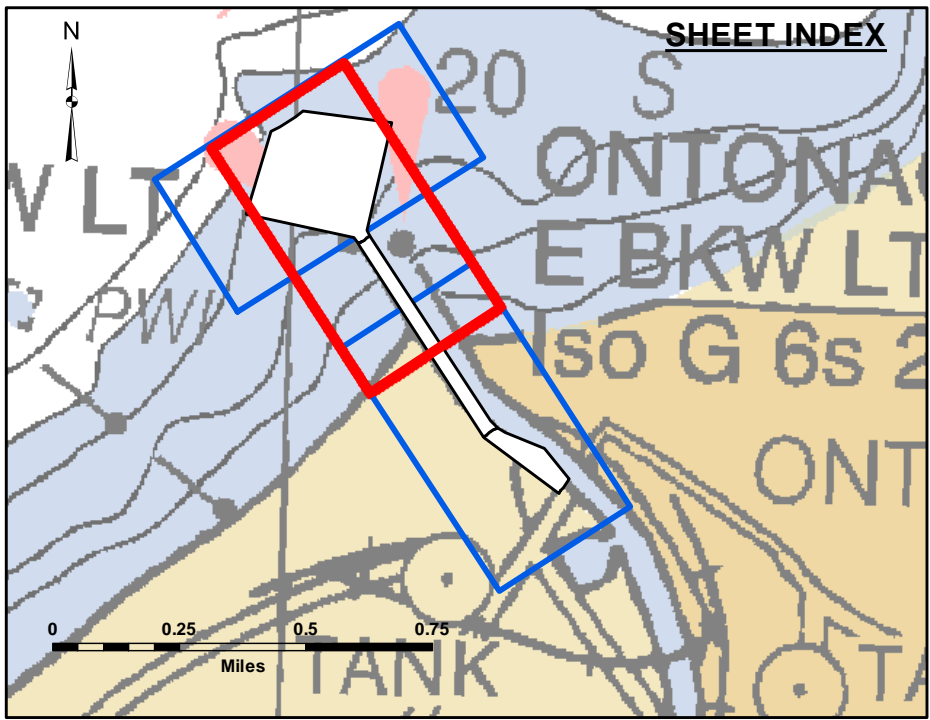
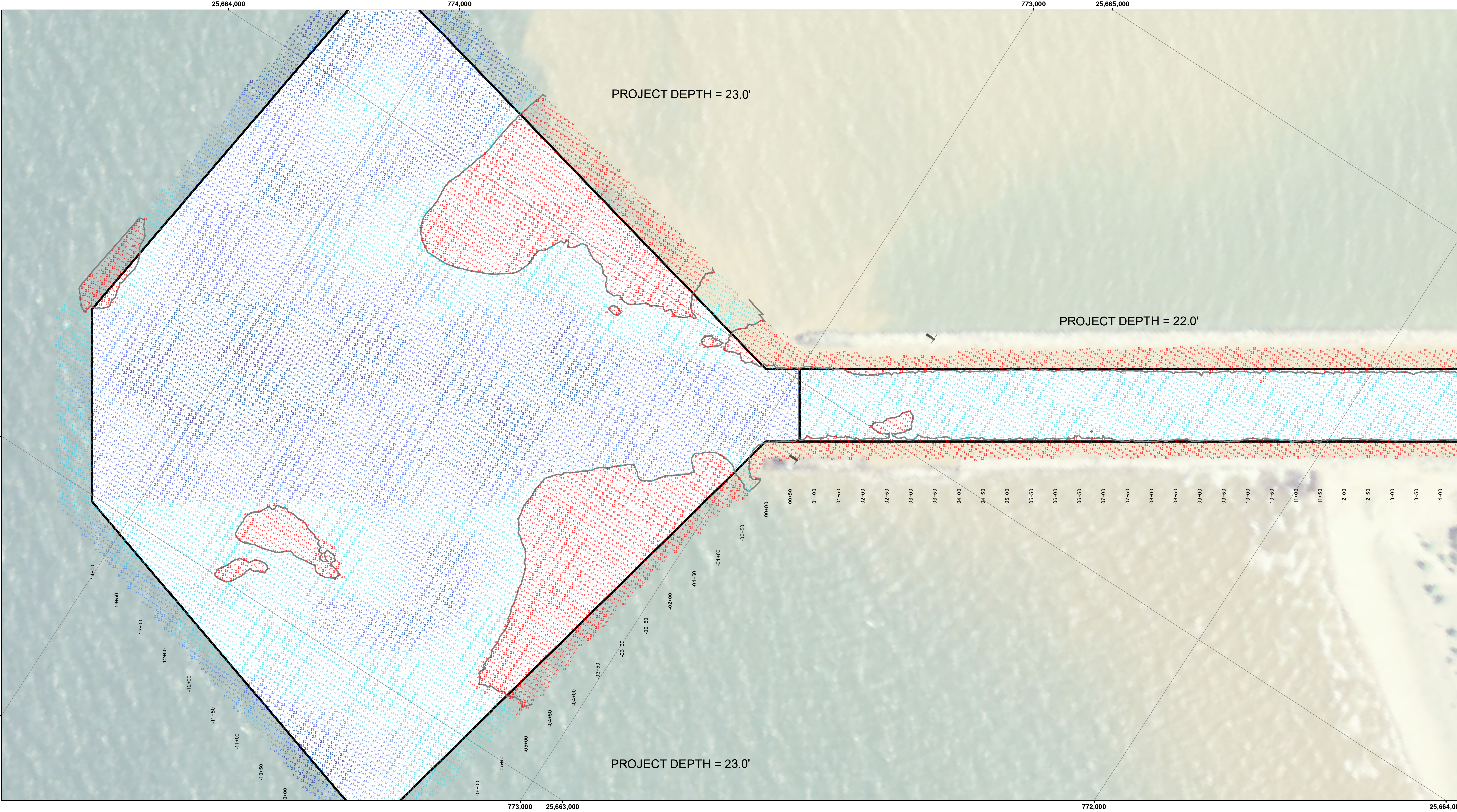
The United States Government furnishes these data and the recipient accepts and uses them with the express understanding that the data are not to be used for any other purpose, including but not limited to, navigation, engineering, or other applications. The user is responsible for the results of any of the application of the data for other than its intended purpose.

**U.S. ARMY CORPS OF ENGINEERS
DETROIT DISTRICT**

| | |
|--------------|-------------------------|
| Submitted: | Surveyed By: ATA/KRC |
| Recommended: | Plotted By: |
| Approved: | Checked By: |

**Ontonagon, MI
Ontonagon Harbor
OT_01_NGN_20220808_AD
08 August 2022**

**Sheet
Reference
Number
1 of 3**



LEGEND

- Cable Submarine
- Cable Overhead
- Placement Area
- ⚓ Beacon, General
- Contour Lines
- ▭ Channel_Limits

SOUNDING LEGEND

- LESS THAN PROJECT DEPTH
- PROJECT DEPTH
- PROJECT DEPTH +1'
- PROJECT DEPTH +2'
- PROJECT DEPTH +3'
- PROJECT DEPTH +4'
- PROJECT DEPTH +5'

1 inch = 100 feet

Feet

0 100 200 300 400 500 600

- NOTES:**
- 1) THE CHARTED SOUNDINGS REPRESENT THE MINIMUM DEPTH MEASURED AT THE TIME OF THE SURVEY WITHIN THE 10' X 10' AREA CENTERED ON THE TEXT, DERIVED FROM A 1' X 1' AVERAGE DATASET AT CELL CENTER. THIS CHART SHOULD NOT BE USED FOR CHANNEL CLEARANCE OR VOLUME COMPUTATIONS. MINIMUM DEPTH DATA IS PRODUCED FOR STRIKE/SOAL REMOVAL OPERATIONS AND NOTICE TO NAVIGATION INTERESTS.
 - 2) THE INFORMATION DEPICTED ON THIS CHART REPRESENTS THE RESULTS OF SURVEYS MADE ON THE DATES INDICATED AND CAN ONLY BE CONSIDERED AS INDICATING THE GENERAL CONDITIONS PRESENT AT THAT TIME.
 - 3) ALL SOUNDING DEPTHS ARE REFERENCED TO INTERNATIONAL GREAT LAKES DATUM 1985 (IGLD 85) LOW WATER DATUM ELEVATION 601.1 FEET ABOVE MEAN WATER LEVEL AT RIMOUSKI, QUEBEC. WATER LEVEL READINGS WERE OBTAINED WITH REAL TIME KINEMATIC (RTK) GLOBAL POSITIONING SYSTEM (GPS) VALUES THAT HAVE BEEN VERIFIED TO MATCH AN AUTOMATED NOAA GAGE LOCATED AT ONTONAGON, MICHIGAN (9099044). DEPTHS ARE MEASURED USING AN R2 SONIC 2024 MULTIBEAM SONAR.
 - 4) HORIZONTAL POSITIONING IS DETERMINED USING REAL TIME KINEMATIC (RTK) GLOBAL NAVIGATION SATELLITE SYSTEM (GNSS) CORRECTIONS FROM A BASE STATION LOCATED AT US ARMY CORPS OF ENGINEERS (USACE) CONTROL POINT 1409. THE GPS RECEIVER IS MANUFACTURED BY APPLANIX MARINE POS/MV VER. 4.0.
 - 5) THE GRID COORDINATE SYSTEM IS MICHIGAN STATE PLANE, NORTH ZONE (2111), NORTH AMERICAN DATUM 1983 (NAD83), US SURVEY FOOT.
 - 6) PROJECT DEPTHS ARE 19.0 FEET, 22.0 FEET AND 23.0 FEET.
 - 7) IMAGERY SOURCED FROM: 2014 MICHIGAN NAIP IMAGERY.

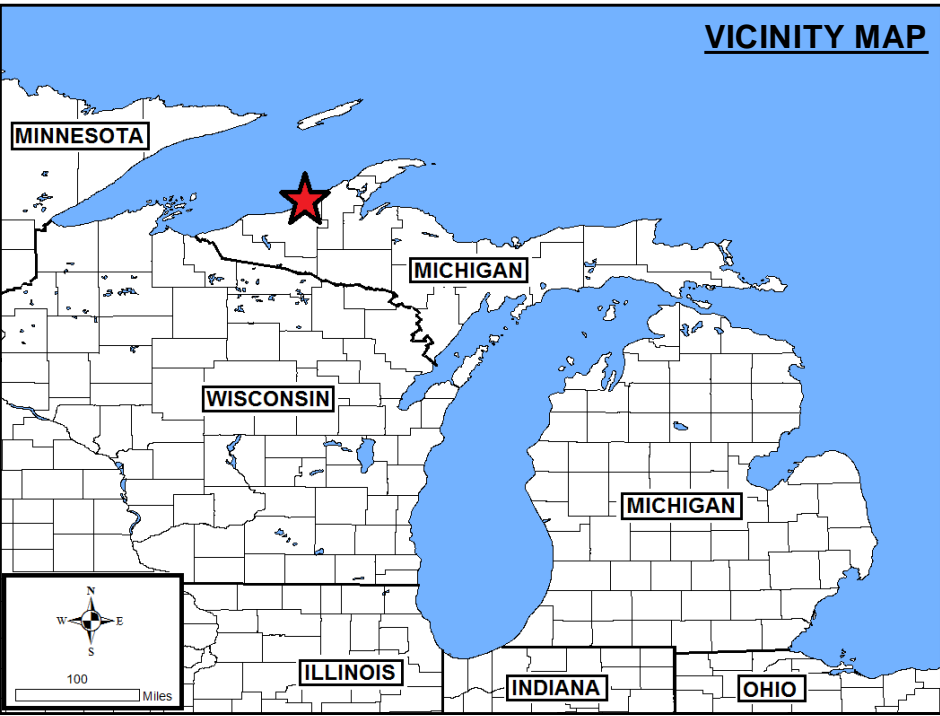
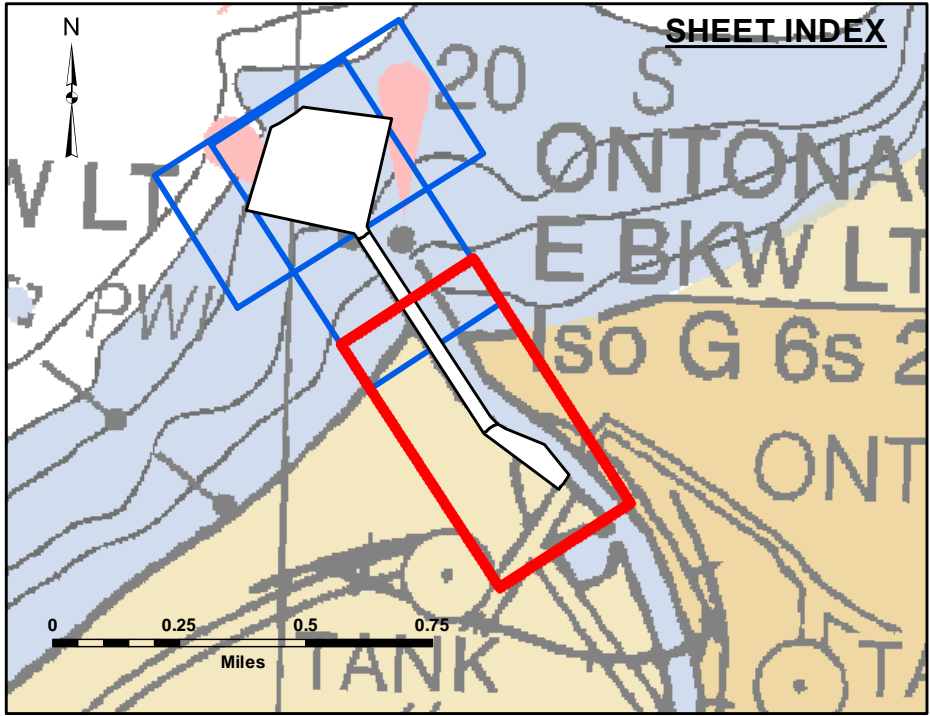
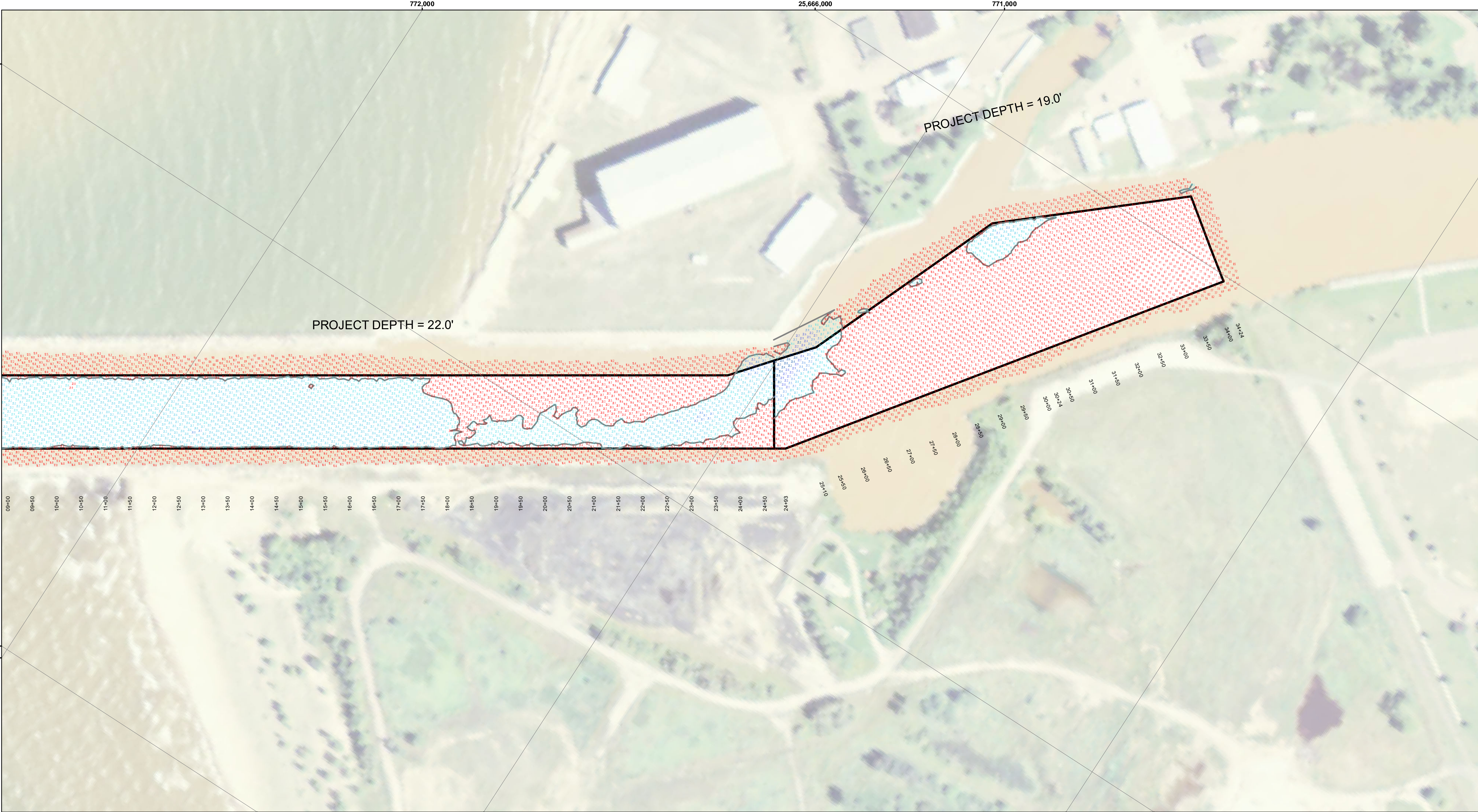


DISCLAIMER: The United States Government furnishes these data and the recipient accepts and uses them with the express understanding that the data are not to be used for any purpose other than that for which they were provided. The United States Government makes no warranty, expressed or implied, concerning the accuracy, completeness, or reliability of the data. The recipient is responsible for the results of any application of the data for other than its intended purpose. The United States Government makes no liability whatsoever to any person by reason of any use made thereof. These data belong to the Government. Therefore, the recipient may not transfer these data to others without transferring the Disclaimer.

| U.S. ARMY CORPS OF ENGINEERS DETROIT DISTRICT | | | |
|--|---------------------------|---------|--|
| Submitted: | Surveyed By: | ATA/KRC | |
| Recommended: | Plotted By: | | |
| Approved: | Chief, Survey Section | | |
| | Chief, Technical Services | | |

Ontonagon, MI
Ontonagon Harbor
OT_01_NGN_20220808_AD
08 August 2022

Sheet
Reference
Number
2 of 3



LEGEND

- Cable Submarine
- Cable Overhead
- Placement Area
- ⚓ Beacon, General
- Contour Lines
- ▭ Channel_Limits

SOUNDING LEGEND

- LESS THAN PROJECT DEPTH
- PROJECT DEPTH
- PROJECT DEPTH +1'
- PROJECT DEPTH +2'
- PROJECT DEPTH +3'
- PROJECT DEPTH +4'
- PROJECT DEPTH +5'

1 inch = 100 feet

Feet

0 100 200 300 400 500 600

- NOTES:**
- 1) THE CHARTED SOUNDINGS REPRESENT THE MINIMUM DEPTH MEASURED AT THE TIME OF THE SURVEY WITHIN THE 10' X 10' AREA CENTERED ON THE TEXT, DERIVED FROM A 1' X 1' AVERAGE DATASET AT CELL CENTER. THIS CHART SHOULD NOT BE USED FOR CHANNEL CLEARANCE OR VOLUME COMPUTATIONS. MINIMUM DEPTH DATA IS PRODUCED FOR STRIKE/SOAL REMOVAL OPERATIONS AND NOTICE TO NAVIGATION INTERESTS.
 - 2) THE INFORMATION DEPICTED ON THIS CHART REPRESENTS THE RESULTS OF SURVEYS MADE ON THE DATES INDICATED AND CAN ONLY BE CONSIDERED AS INDICATING THE GENERAL CONDITIONS PRESENT AT THAT TIME.
 - 3) ALL SOUNDING DEPTHS ARE REFERENCED TO INTERNATIONAL GREAT LAKES DATUM 1985 (IGLD 85) LOW WATER DATUM ELEVATION 601.1 FEET ABOVE MEAN WATER LEVEL AT RIMOUSKI, QUEBEC. WATER LEVEL READINGS WERE OBTAINED WITH REAL TIME KINEMATIC (RTK) GLOBAL POSITIONING SYSTEM (GPS) VALUES THAT HAVE BEEN VERIFIED TO MATCH AN AUTOMATED NOAA GAGE LOCATED AT ONTONAGON, MICHIGAN (9099044). DEPTHS ARE MEASURED USING AN R2 SONIC 2024 MULTIBEAM SONAR.
 - 4) HORIZONTAL POSITIONING IS DETERMINED USING REAL TIME KINEMATIC (RTK) GLOBAL NAVIGATION SATELLITE SYSTEM (GNSS) CORRECTIONS FROM A BASE STATION LOCATED AT US ARMY CORPS OF ENGINEERS (USACE) CONTROL POINT 1409. THE GPS RECEIVER IS MANUFACTURED BY APPLANIX MARINE POS/MV VER. 4.0.
 - 5) THE GRID COORDINATE SYSTEM IS MICHIGAN STATE PLANE, NORTH ZONE (2111), NORTH AMERICAN DATUM 1983 (NAD83), US SURVEY FOOT.
 - 6) PROJECT DEPTHS ARE 19.0 FEET, 22.0 FEET AND 23.0 FEET.
 - 7) IMAGERY SOURCED FROM: 2014 MICHIGAN NAIP IMAGERY.


**US Army Corps
of Engineers**
District: CELRE

DISCLAIMER: The data presented in this chart represents the results of data collection and processing for a specific US Army Corps of Engineers activity and indicates the general existing conditions. The data is not intended to be used for any other purpose, including but not limited to, engineering, construction, or any other activity. The user is responsible for the results of any of the application of the data for other than its intended purpose.

Access Constraints: The United States Government furnishes these data and the recipient accepts and uses them with the express understanding that the data are not to be used for any other purpose, including but not limited to, engineering, construction, or any other activity. The user is responsible for the results of any of the application of the data for other than its intended purpose.

| | | | |
|--|---------------------------|---------|--|
| U.S. ARMY CORPS OF ENGINEERS DETROIT DISTRICT | | | |
| Submitted: | Surveyed By: | ATA/KRC | |
| Recommended: | Plotted By: | | |
| Chief, Survey Section | Chief, Technical Services | | |
| Approved: | Checked By: | | |

Ontonagon, MI
Ontonagon Harbor
OT_01_NGN_20220808_AD
08 August 2022

**Sheet
Reference
Number**
3 of 3