

Disclaimer: The data represented by the results of data collection/processing for a specific US Army Corps of Engineers activity and the general existing conditions. The user is responsible for the results of any of the application of the data for other than its intended purpose.

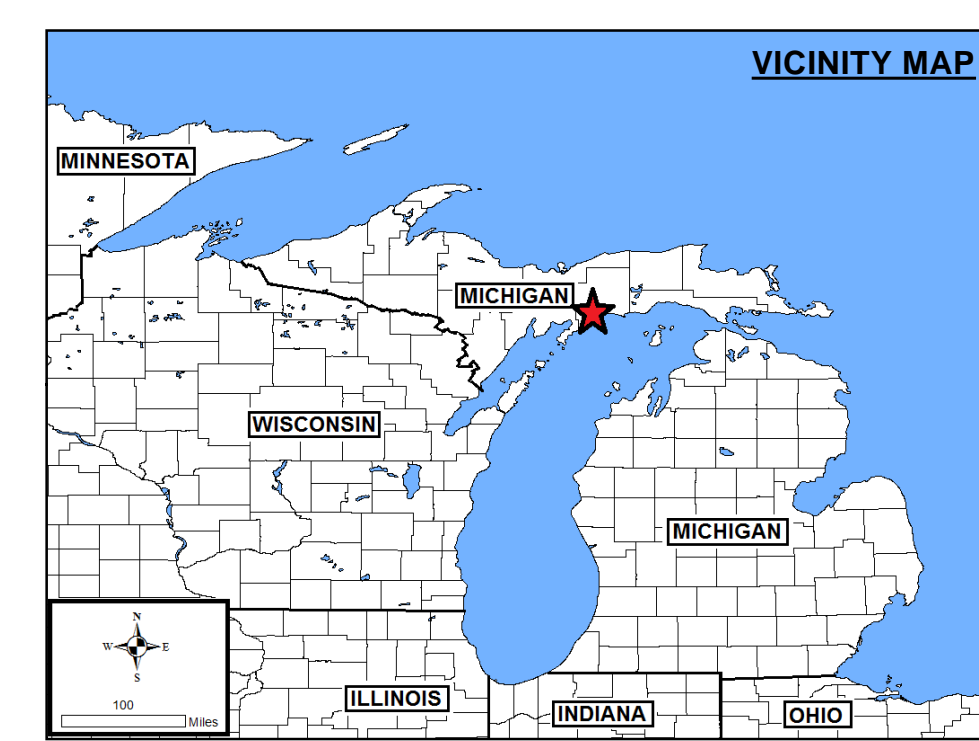
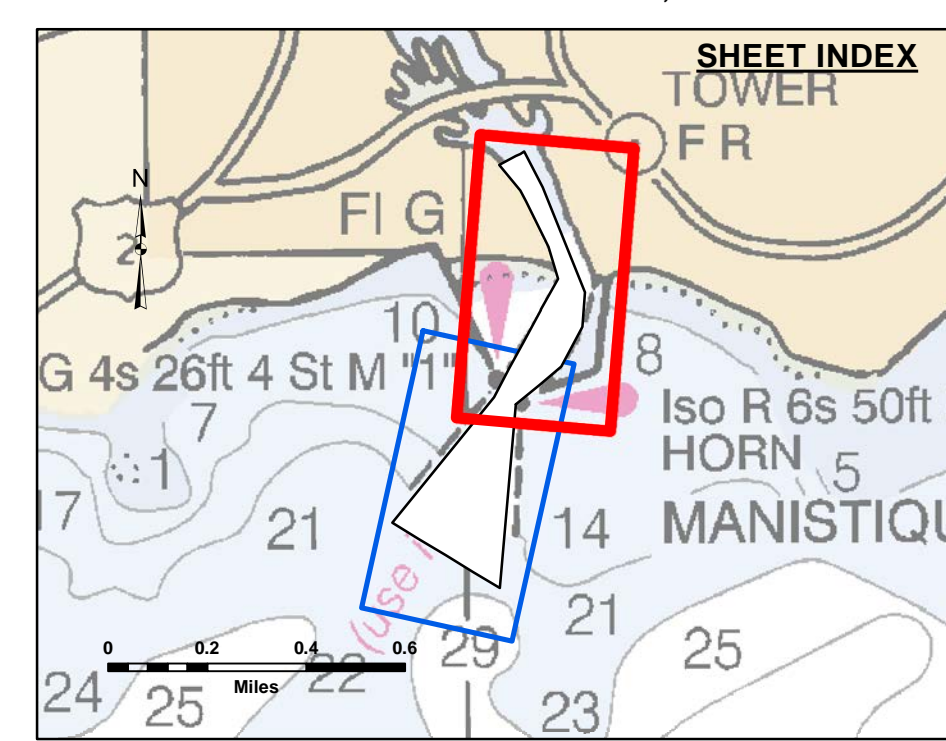
Access Constraints: The United States Government furnishes these data and the recipient accepts and uses them with the express understanding that they are not to be used for any purpose other than that for which they were provided. The recipient may not transfer these data to others without also transferring this Disclaimer.

Submitted:	Surveyed By:
Recommended:	Plotted By:
Approved:	Checked By:

U.S. ARMY CORPS OF ENGINEERS
DETROIT DISTRICT

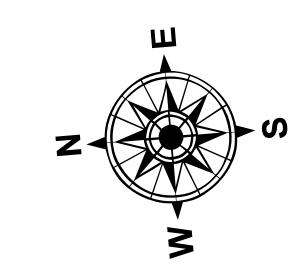
Manistique Harbor, MI
Manistique Harbor
MS_01_TQE_20220919_CS
19 September 2022

Sheet Reference Number
1 of 2

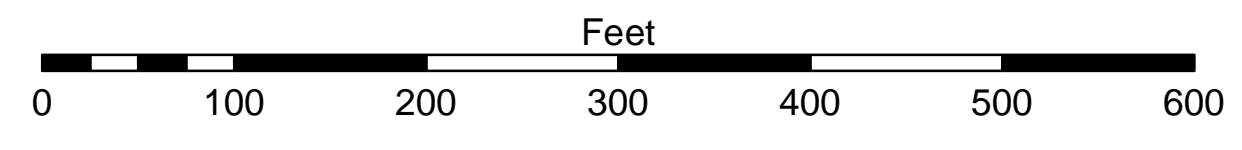


- LEGEND**
- Cable Submarine
 - - - Cable Overhead
 - Placement Area
 - ⊥ Beacon, General
 - Contour Lines
 - ▭ Channel_Limits

- SOUNDING LEGEND**
- Red: LESS THAN PROJECT DEPTH
 - Light Blue: PROJECT DEPTH
 - Medium Blue: PROJECT DEPTH +1'
 - Dark Blue: PROJECT DEPTH +2'
 - Very Dark Blue: PROJECT DEPTH +3'
 - Black: PROJECT DEPTH +4'
 - Dark Purple: PROJECT DEPTH +5'



1 inch = 100 feet



NOTES: THE INFORMATION DEPICTED ON THIS MAP CAN ONLY BE CONSIDERED AS INDICATING THE GENERAL CONDITIONS PRESENT AT THE TIME.

THE LOCATION OF NAVIGATION AIDS REPRESENT THEIR GENERAL LOCATION.

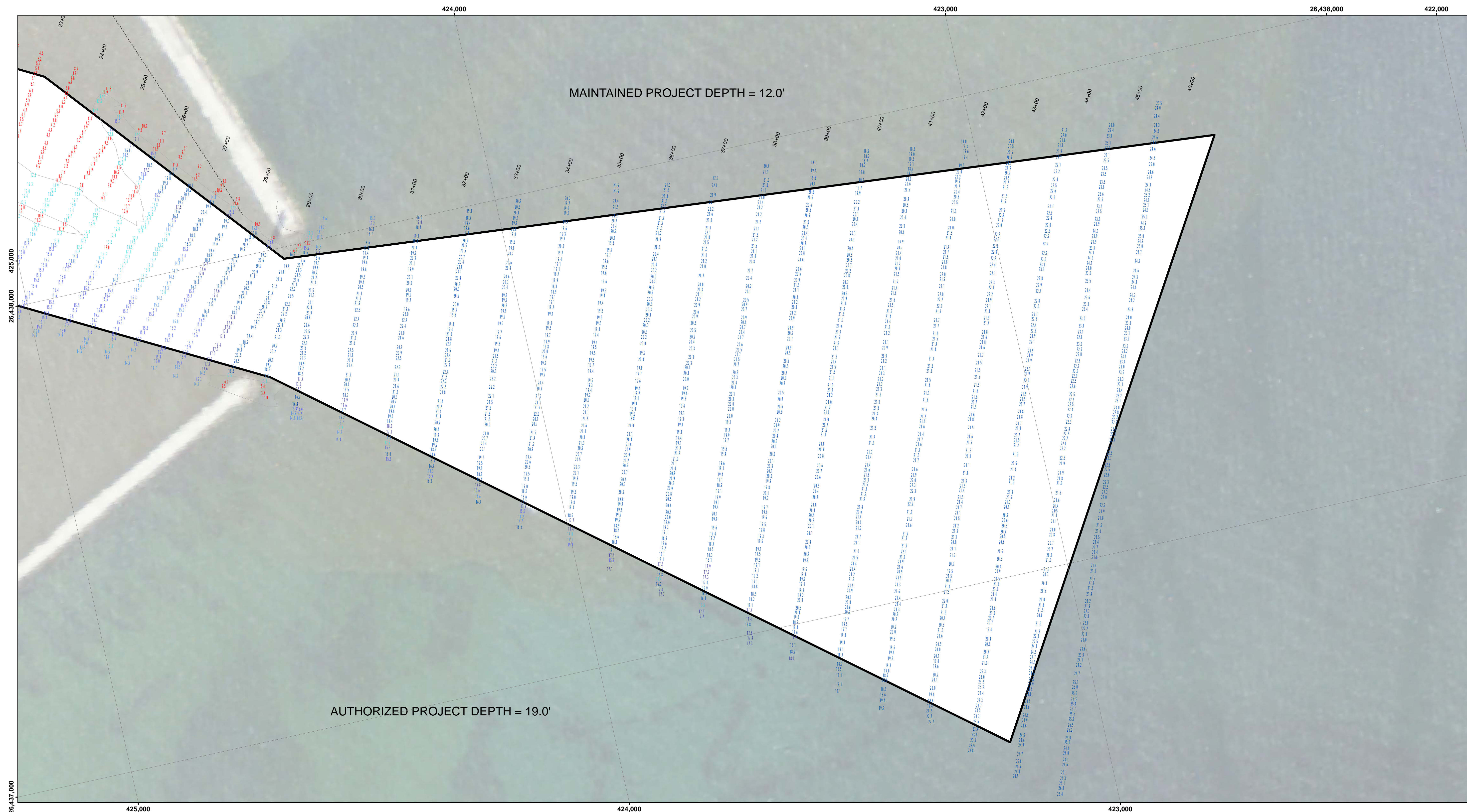
ELEVATIONS AND SOUNDING DEPTHS ARE REFERRED TO INTERNATIONAL GREAT LAKES DATUM 1985 (IGLD 85). LOW WATER DATUM (LWD) ZERO IS 577.5 FEET ABOVE MEAN WATER LEVEL AT POINT RIMOUSKI QUEBEC. WATER LEVEL READINGS ARE FROM AN AUTOMATED GAUGE LOCATED AT MANISTIQUE CITY MARINA. DEPTHS ARE MEASURED USING A TELEDYNE ECHOTRAC E20 SINGLE BEAM ECHOSOUNDER.

HORIZONTAL POSITIONING IS DETERMINED BY USING A TRIMBLE MPS865 GPS RECEIVER WITH MARINESTAR GPS CORRECTIONS

GRID COORDINATES ARE BASED ON THE MICHIGAN STATE PLANE COORDINATE SYSTEM, LAMBERT PROJECTION, MICHIGAN NORTH ZONE (2111), NORTH AMERICAN DATUM (NAD83). ALL COORDINATES SHOWN ARE IN U.S. SURVEY FEET.

UNLESS OTHERWISE NOTED MAINTAINED DEPTH IS 12.0 FEET BELOW LOW WATER DATUM

IMAGERY SOURCED FROM: 2014 MICHIGAN NAIP IMAGERY



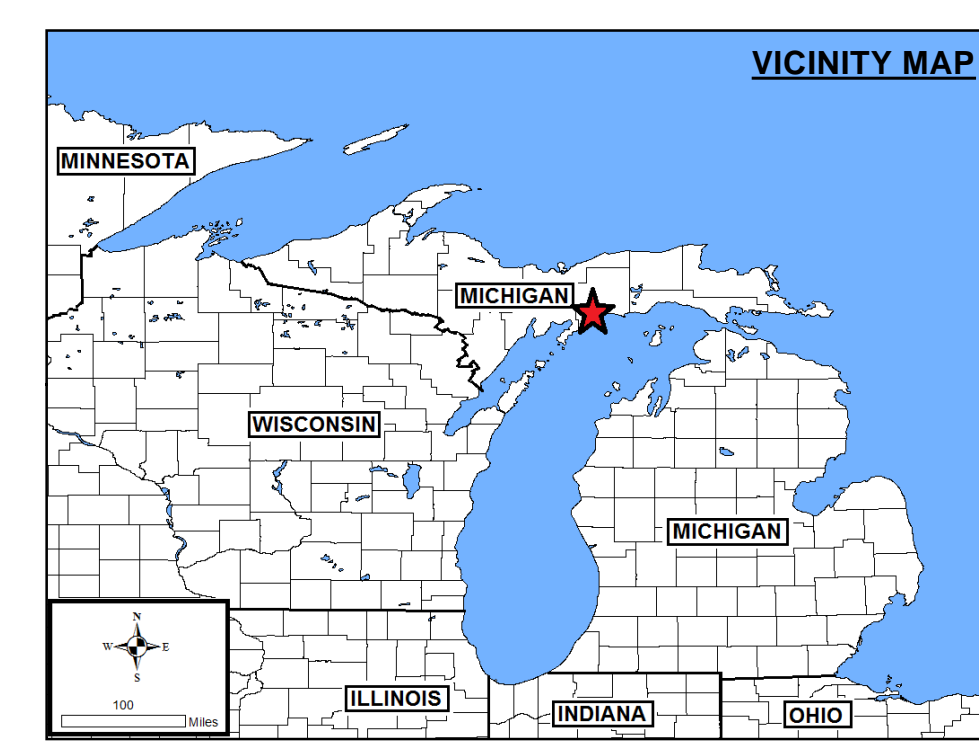
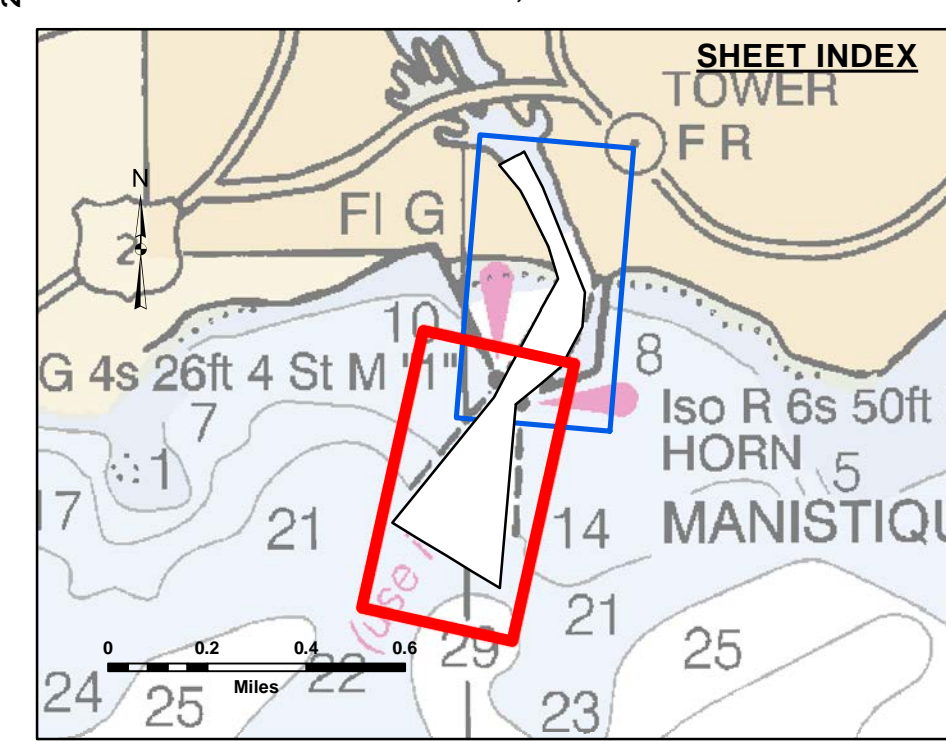
DISCLAIMER: The United States Government furnishes these data and the recipient accepts and uses them with the express understanding that the recipient is responsible for the accuracy, reliability, usability or suitability for any particular purpose of the information. The United States Government makes no warranty, express or implied, concerning the accuracy, completeness, reliability, usability or suitability for any particular purpose of the information. These data are provided to you as a courtesy and are not to be used for any purpose other than that for which they were provided. The recipient may not transfer these data to others without also transferring this Disclaimer.

Submitted:	Surveyed By:
Recommended:	Plotted By:
Approved:	Checked By:

U.S. ARMY CORPS OF ENGINEERS
DETROIT DISTRICT

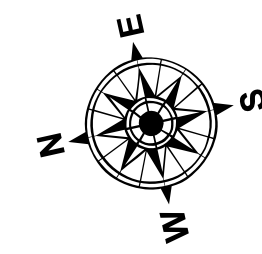
Manistique Harbor, MI
Manistique Harbor
MS_01_TQE_20220919_CS
19 September 2022

Sheet Reference Number
2 of 2

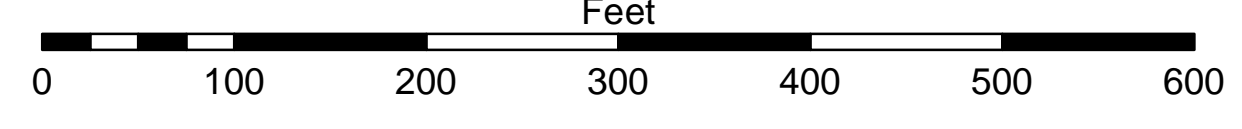


- LEGEND**
- Cable Submarine
 - - - Cable Overhead
 - Placement Area
 - ⊥ Beacon, General
 - Contour Lines
 - ▭ Channel Limits

- SOUNDING LEGEND**
- LESS THAN PROJECT DEPTH
 - PROJECT DEPTH
 - PROJECT DEPTH +1'
 - PROJECT DEPTH +2'
 - PROJECT DEPTH +3'
 - PROJECT DEPTH +4'
 - PROJECT DEPTH +5'



1 inch = 100 feet



NOTES: THE INFORMATION DEPICTED ON THIS MAP CAN ONLY BE CONSIDERED AS INDICATING THE GENERAL CONDITIONS PRESENT AT THE TIME.

THE LOCATION OF NAVIGATION AIDS REPRESENT THEIR GENERAL LOCATION.

ELEVATIONS AND SOUNDING DEPTHS ARE REFERRED TO INTERNATIONAL GREAT LAKES DATUM 1985 (IGLD 85). LOW WATER DATUM (LWD) ZERO IS 577.5 FEET ABOVE MEAN WATER LEVEL AT POINT RIMOUSKI QUEBEC. WATER LEVEL READINGS ARE FROM AN AUTOMATED GAUGE LOCATED AT MANISTIQUE CITY MARINA. DEPTHS ARE MEASURED USING A TELEDYNE ECHOTRAC E20 SINGLE BEAM ECHOSOUNDER.

HORIZONTAL POSITIONING IS DETERMINED BY USING A TRIMBLE MPS865 GPS RECEIVER WITH MARINESTAR GPS CORRECTIONS

GRID COORDINATES ARE BASED ON THE MICHIGAN STATE PLANE COORDINATE SYSTEM, LAMBERT PROJECTION, MICHIGAN NORTH ZONE (2111), NORTH AMERICAN DATUM (NAD83). ALL COORDINATES SHOWN ARE IN U.S. SURVEY FEET.

UNLESS OTHERWISE NOTED MAINTAINED DEPTH IS 12.0 FEET BELOW LOW WATER DATUM

IMAGERY SOURCED FROM: 2014 MICHIGAN NAIP IMAGERY