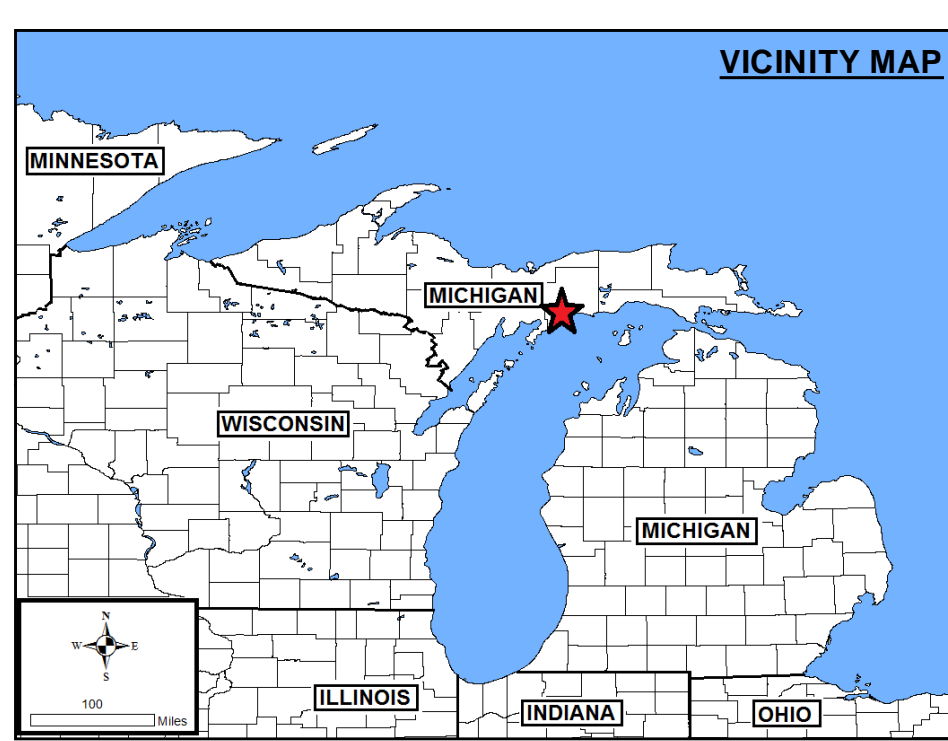
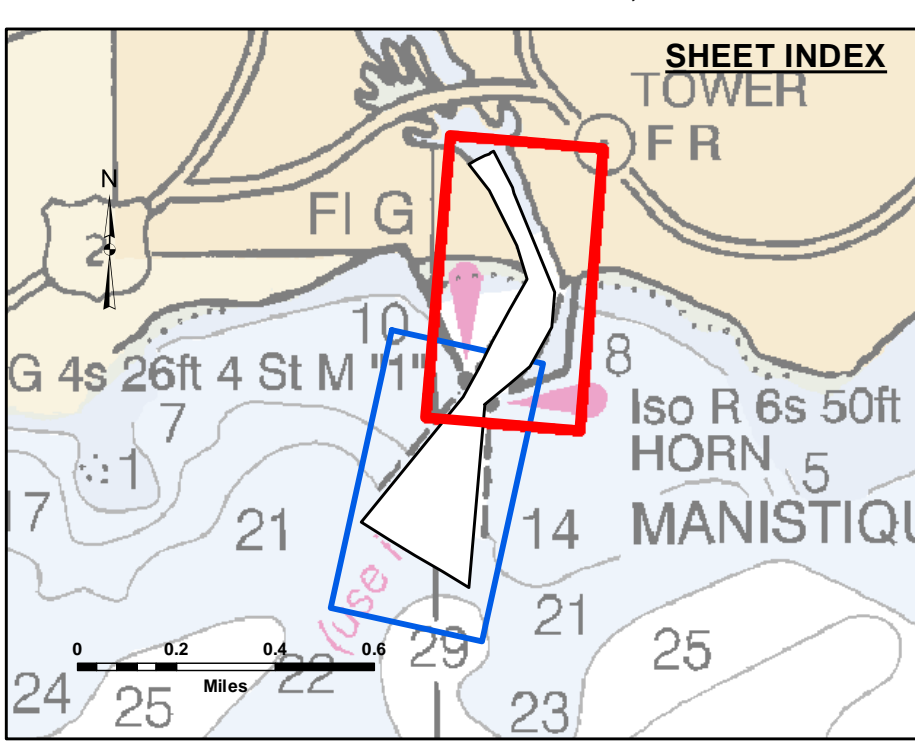


**Disclaimer:** The data represents the results of data collection and processing for a specific US Army Corps of Engineers activity and indicates the general existing conditions. The user is responsible for the accuracy, completeness, and reliability of the data for other than its intended purpose.

**DISCLAIMER:** The United States Government furnishes this data and the recipient accepts and uses them with the express understanding that the data is provided for informational purposes only. The data is not intended for use in any project, program, or activity, or for any purpose not intended by the United States Government. The recipient may not transfer, disseminate, or use the data for any purpose other than that for which it was provided. The recipient may not transfer these data to others without also transferring this disclaimer.

|              |              |
|--------------|--------------|
| Submitted:   | Surveyed By: |
| Recommended: | Plotted By:  |
| Approved:    | Checked By:  |

U.S. ARMY CORPS OF ENGINEERS  
DETROIT DISTRICT

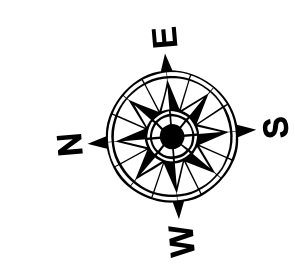


**LEGEND**

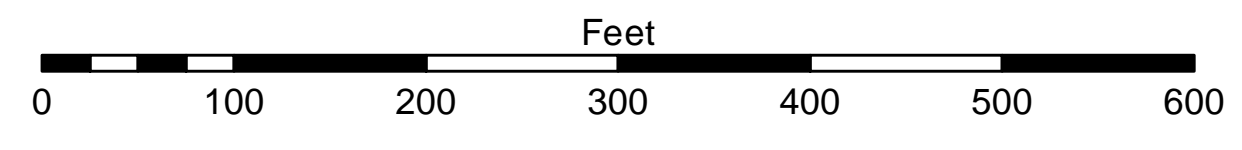
- ..... Cable Submarine
- - - Cable Overhead
- Placement Area
- ⊥ Beacon, General
- Contour Lines
- ▭ Channel\_Limits

**SOUNDING LEGEND**

- Red: LESS THAN PROJECT DEPTH
- Light Blue: PROJECT DEPTH
- Light Green: PROJECT DEPTH +1'
- Medium Green: PROJECT DEPTH +2'
- Dark Green: PROJECT DEPTH +3'
- Blue: PROJECT DEPTH +4'
- Dark Blue: PROJECT DEPTH +5'



1 inch = 100 feet



**NOTES:** THE INFORMATION DEPICTED ON THIS MAP CAN ONLY BE CONSIDERED AS INDICATING THE GENERAL CONDITIONS PRESENT AT THE TIME.

THE LOCATION OF NAVIGATION AIDS REPRESENT THEIR GENERAL LOCATION.

ELEVATIONS AND SOUNDING DEPTHS ARE REFERRED TO INTERNATIONAL GREAT LAKES DATUM 1985 (IGLD 85). LOW WATER DATUM (LWD) ZERO IS 577.5 FEET ABOVE MEAN WATER LEVEL AT POINT RIMOUSKI QUEBEC. WATER LEVEL READINGS ARE FROM AN AUTOMATED GAUGE LOCATED AT MANISTIQUE CITY MARINA. DEPTHS ARE MEASURED USING A TELEDYNE ECHOTRAC E20 SINGLE BEAM ECHOSOUNDER.

HORIZONTAL POSITIONING IS DETERMINED BY USING A TRIMBLE SP5461 DGPS RECEIVER WITH MARINESTAR GPS CORRECTIONS

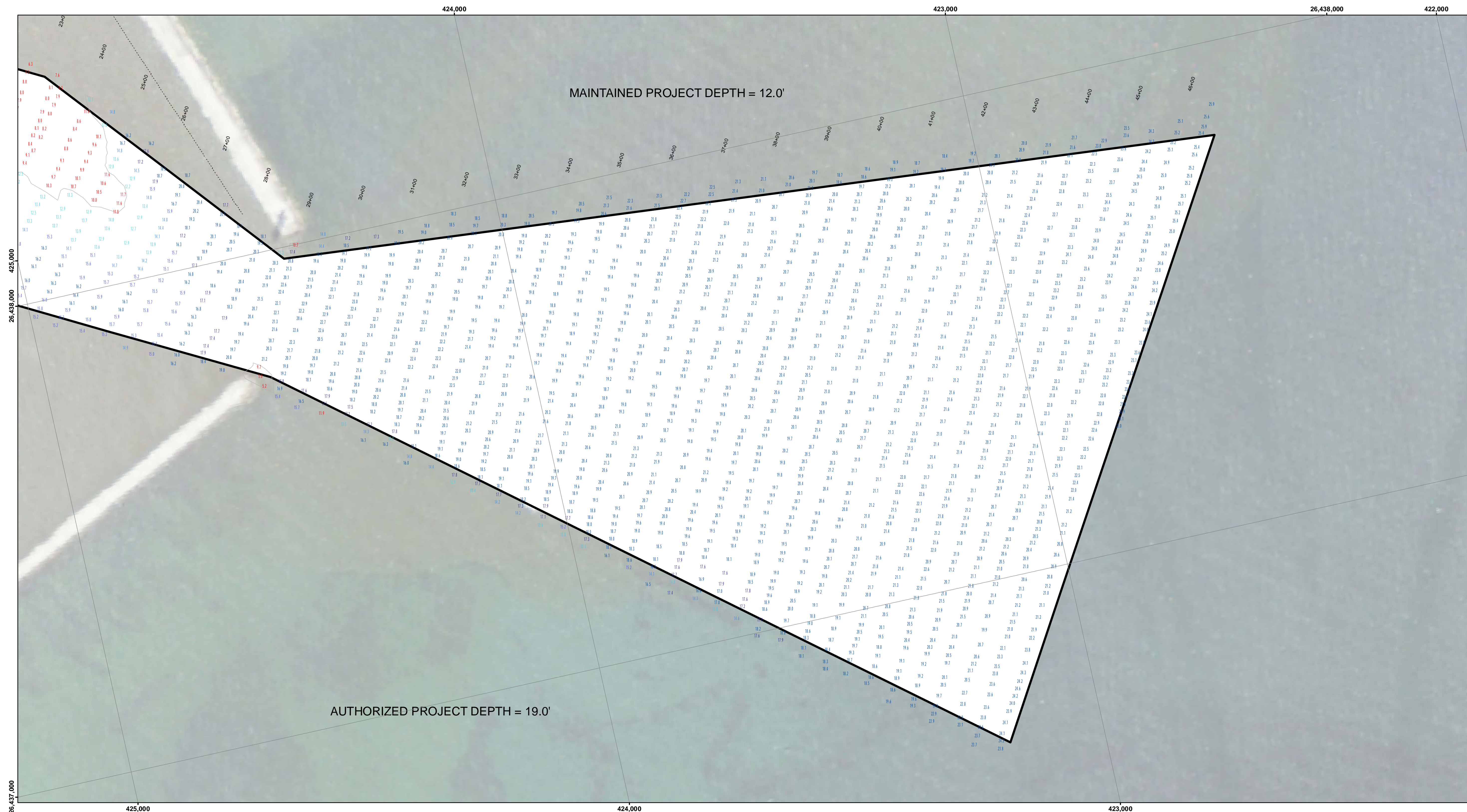
GRID COORDINATES ARE BASED ON THE MICHIGAN STATE PLANE COORDINATE SYSTEM, LAMBERT PROJECTION, MICHIGAN NORTH ZONE (2111), NORTH AMERICAN DATUM (NAD83). ALL COORDINATES SHOWN ARE IN U.S. SURVEY FEET.

UNLESS OTHERWISE NOTED MAINTAINED DEPTH IS 12.0 FEET BELOW LOW WATER DATUM

IMAGERY SOURCED FROM: 2014 MICHIGAN NAIP IMAGERY

Manistique Harbor, MI  
Manistique Harbor  
MS\_01\_TQE\_20210824\_CS  
24 August 2021

Sheet Reference Number  
1 of 2

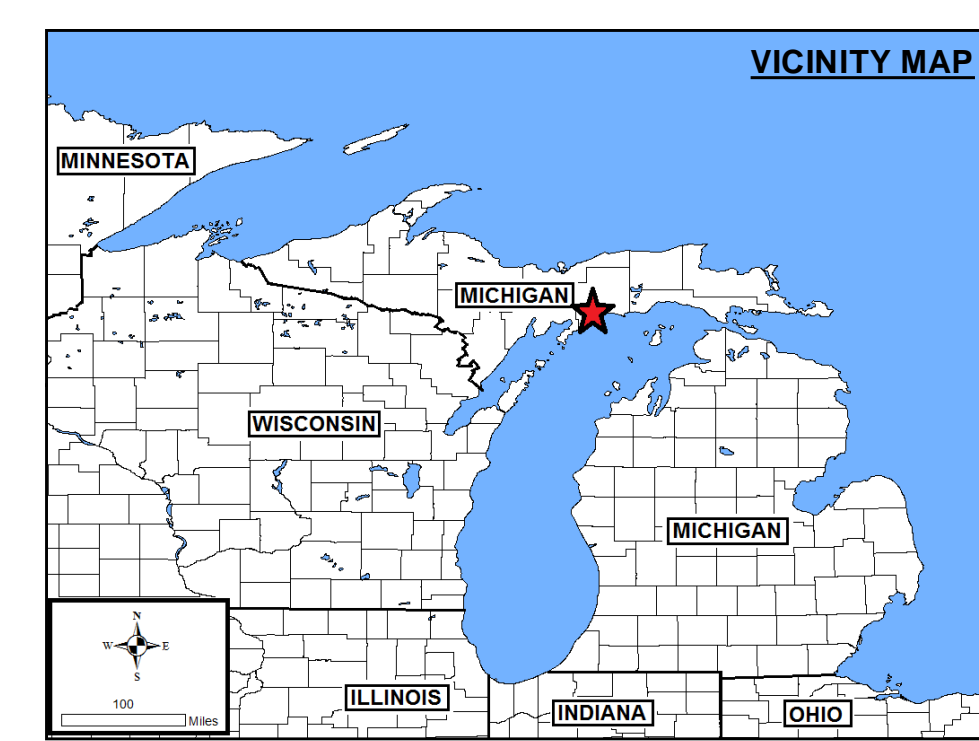
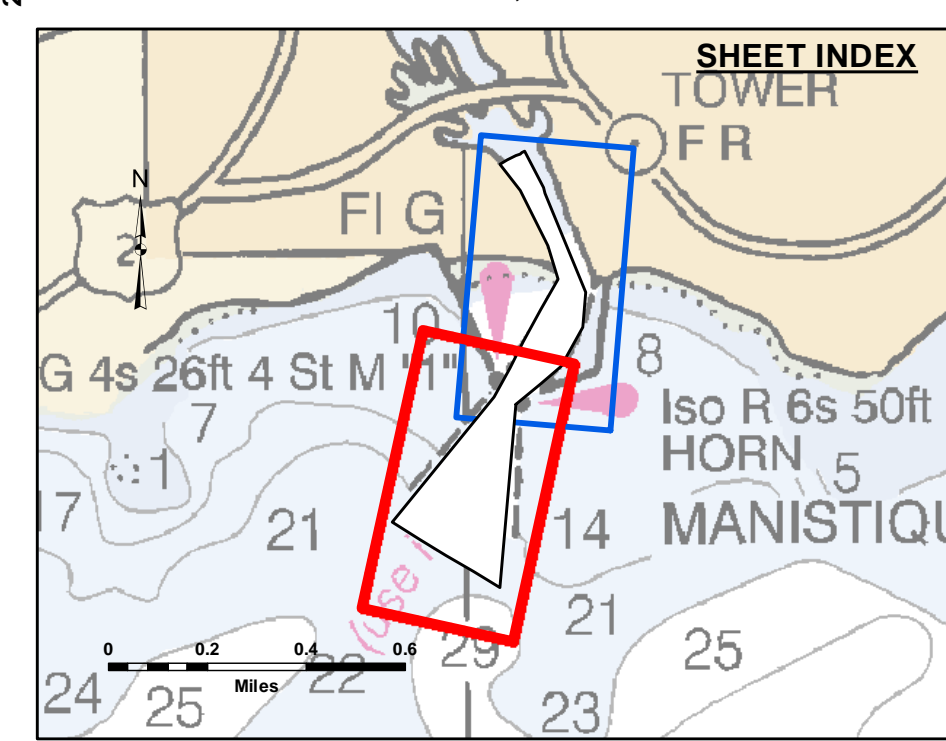


**Disclaimer:** The data represents the results of data collection processing for a specific US Army Corps of Engineers activity and indicates the general existing conditions. The user is responsible for the accuracy, completeness, and reliability of the data for other than its intended purpose.

**DISCLAIMER:** The United States Government furnishes this data and the recipient accepts and uses them with the express understanding that the data is provided for informational purposes only, and is not intended for use in any way that requires a higher level of accuracy, completeness, or reliability than that which is provided. The recipient may not transfer this data to others without also transferring this disclaimer.

|              |              |
|--------------|--------------|
| Submitted:   | Surveyed By: |
| Recommended: | Plotted By:  |
| Approved:    | Checked By:  |

U.S. ARMY CORPS OF ENGINEERS  
DETROIT DISTRICT

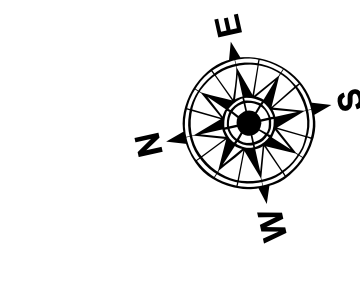


**LEGEND**

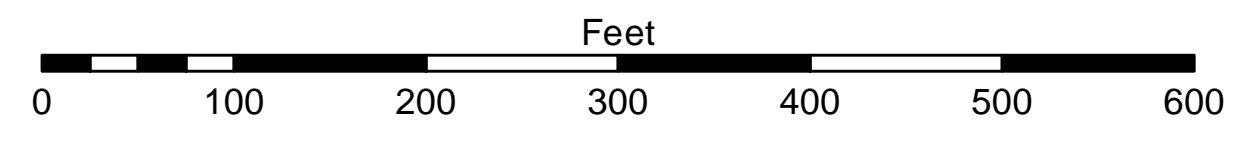
- ..... Cable Submarine
- - - Cable Overhead
- Placement Area
- ⊥ Beacon, General
- Contour Lines
- ▭ Channel\_Limits

**SOUNDING LEGEND**

- Red: LESS THAN PROJECT DEPTH
- Light Blue: PROJECT DEPTH
- Light Green: PROJECT DEPTH +1'
- Light Yellow: PROJECT DEPTH +2'
- Light Orange: PROJECT DEPTH +3'
- Light Purple: PROJECT DEPTH +4'
- Dark Purple: PROJECT DEPTH +5'



1 inch = 100 feet



**NOTES:** THE INFORMATION DEPICTED ON THIS MAP CAN ONLY BE CONSIDERED AS INDICATING THE GENERAL CONDITIONS PRESENT AT THE TIME.

THE LOCATION OF NAVIGATION AIDS REPRESENT THEIR GENERAL LOCATION.

ELEVATIONS AND SOUNDING DEPTHS ARE REFERRED TO INTERNATIONAL GREAT LAKES DATUM 1985 (IGLD 85). LOW WATER DATUM (LWD) ZERO IS 577.5 FEET ABOVE MEAN WATER LEVEL AT POINT RIMOUSKI QUEBEC. WATER LEVEL READINGS ARE FROM AN AUTOMATED GAUGE LOCATED AT MANISTIQUE CITY MARINA. DEPTHS ARE MEASURED USING A TELEDYNE ECHOTRAC E20 SINGLE BEAM ECHOSOUNDER.

HORIZONTAL POSITIONING IS DETERMINED BY USING A TRIMBLE SP5461 DGPS RECEIVER WITH MARINESTAR GPS CORRECTIONS

GRID COORDINATES ARE BASED ON THE MICHIGAN STATE PLANE COORDINATE SYSTEM, LAMBERT PROJECTION, MICHIGAN NORTH ZONE (2111), NORTH AMERICAN DATUM (NAD83). ALL COORDINATES SHOWN ARE IN U.S. SURVEY FEET.

UNLESS OTHERWISE NOTED MAINTAINED DEPTH IS 12.0 FEET BELOW LOW WATER DATUM

IMAGERY SOURCED FROM: 2014 MICHIGAN NAIP IMAGERY

Manistique Harbor, MI  
Manistique Harbor  
MS\_01\_TQE\_20210824\_CS  
24 August 2021

Sheet Reference Number  
2 of 2