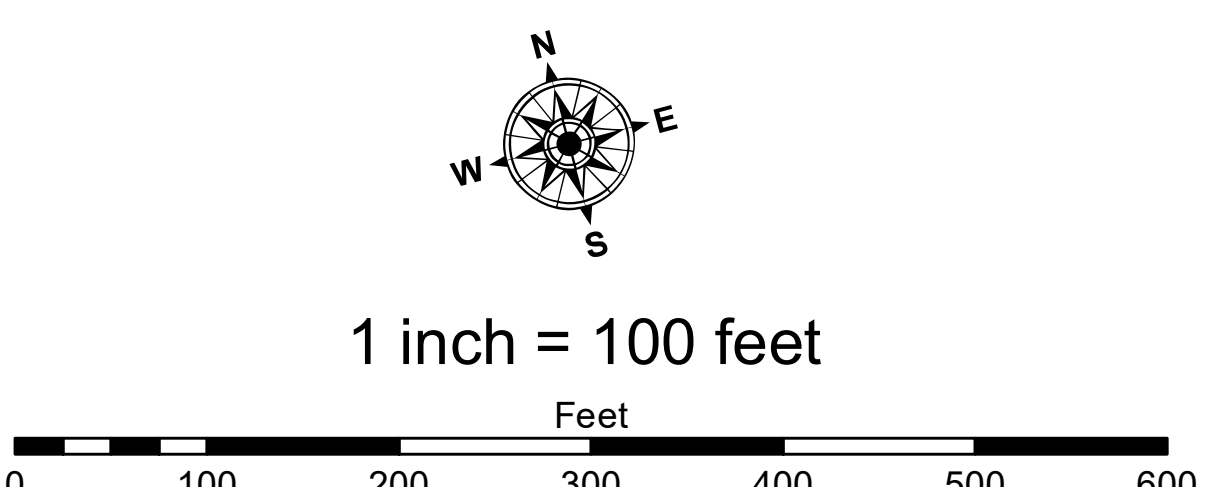


- LEGEND**
- ..... Cable Submarine
  - Cable Overhead
  - Placement Area
  - ⊥ Beacon, General
  - Contour Lines
  - Channel Limits

- SOUNDING LEGEND**
- LESS THAN PROJECT DEPTH
  - PROJECT DEPTH
  - PROJECT DEPTH +1'
  - PROJECT DEPTH +2'
  - PROJECT DEPTH +3'
  - PROJECT DEPTH +4'
  - PROJECT DEPTH +5'
  - PROJECT DEPTH +6'



**NOTES:**

THE INFORMATION DEPICTED ON THIS MAP REPRESENTS THE RESULTS OF SURVEYS MADE ON THE DATES INDICATED AND CAN ONLY BE CONSIDERED AS INDICATING THE GENERAL CONDITIONS AT THE TIME.

FOR MULTIBEAM SURVEYS: THE SOUNDINGS INDICATED HEREIN ARE GENERALIZED DEPTHS AND ARE NOT REPRESENTATIVE OF THE FULL DATASET. THE SOUNDINGS REPRESENT THE MINIMUM DEPTH FOUND WITHIN THE 10X10 FOOT AREA CENTERED ON THE TEXT, DERIVED FROM A 1X1 FOOT AVERAGE DATASET AT CELL CENTER. THIS MAP SHOULD NOT BE USED FOR CHANNEL CLEARANCE OR VOLUME COMPUTATIONS. MINIMUM DEPTH DATA IS PRODUCED FOR STRIKE/SOAL REMOVAL OPERATIONS AND NOTICE TO NAVIGATION INTERESTS.

HORIZONTAL GRID DATUM BASED ON MICHIGAN STATE PLANE COORDINATE SYSTEM, LAMBERT PROJECTION, SOUTH ZONE (2113), NORTH AMERICAN DATUM 1983, U.S. SURVEY FOOT.

ALL SOUNDINGS ARE REFERENCED TO INTERNATIONAL GREAT LAKES DATUM OF 1985 (IGLD85).

PROJECT DEPTHS FOR MONROE HARBOR ARE 21.0' AND THE TURNING BASIN PROJECT DEPTH IS 18.5'

TIDE VALUES ARE DERIVED FROM THE NATIONAL OCEANIC AND ATMOSPHERIC ADMINISTRATION (NOAA) WATER LEVEL STATIONS: FERMPOWER PLANT, MI (#9063090)

POSITIONING: APPLANIX POS-MV4 W/ VRS/RTK OR MARINESTAR GNSS. MOTION COMPENSATION: APPLANIX POS-MV4. SONAR: RSONIC 2024 (MULTIBEAM) OR ODOM CV-300 (SINGLEBEAM) SOFTWARE: HYPACK

2010 AERIAL PHOTOGRAPHY DATA SOURCE: USGS ALL COORDINATES ARE IN U.S. SURVEY FEET

**Monroe Harbor, MI**  
**Monroe Harbor**  
**MH\_01\_MNH\_20220816\_BD**  
**16 August 2022**

**Sheet Reference Number**  
**1 of 10**

Revision Number:  
4.2-20240420



Public Data Liability: The data represents the results of data collection and processing for a specific US Army Corps of Engineers activity and indicates the general existing conditions. The user is responsible for the accuracy, completeness, and reliability of the data for any application of the data for other than its intended purpose.

DISCLAIMER: The United States Government (hereinafter referred to as the "Government") does not warrant, either expressly or impliedly, the accuracy, completeness, or reliability of the data for any particular purpose of any use under no liability whatsoever to any person by reason of any use made thereof. These data belong to the Government. The Government makes no representation or warranty, either express or implied, that the data are correct, accurate, or reliable, and that the Government is not responsible for any errors or omissions in the data. The recipient may not transfer these data to others without also transferring this Disclaimer.

**U.S. ARMY CORPS OF ENGINEERS**  
**DETROIT DISTRICT**

Submitted: \_\_\_\_\_

Recommended: Chief, Survey Section

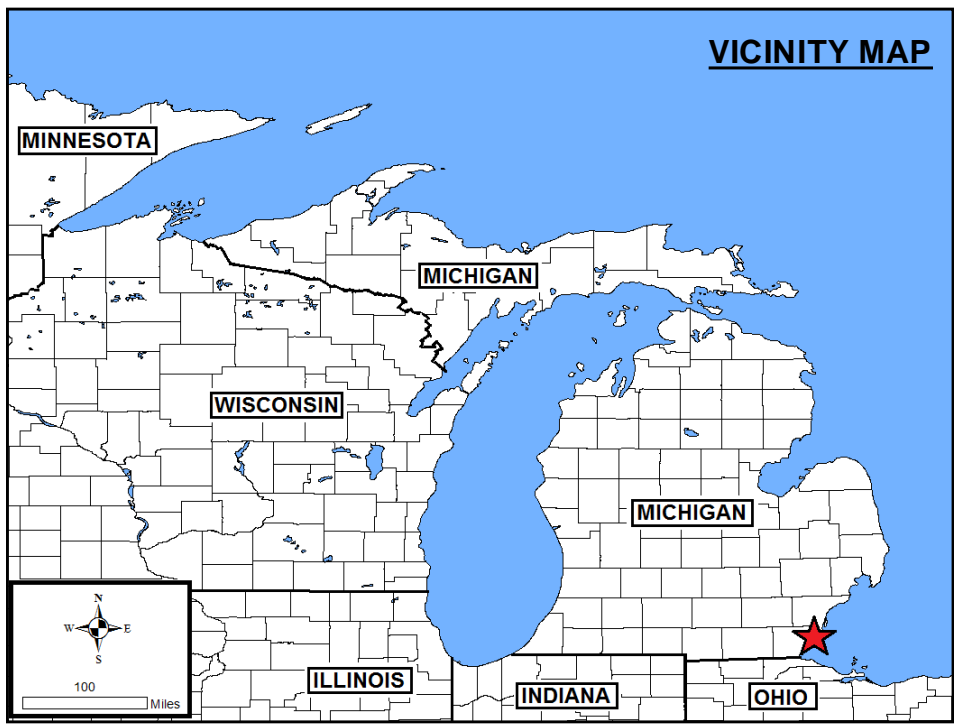
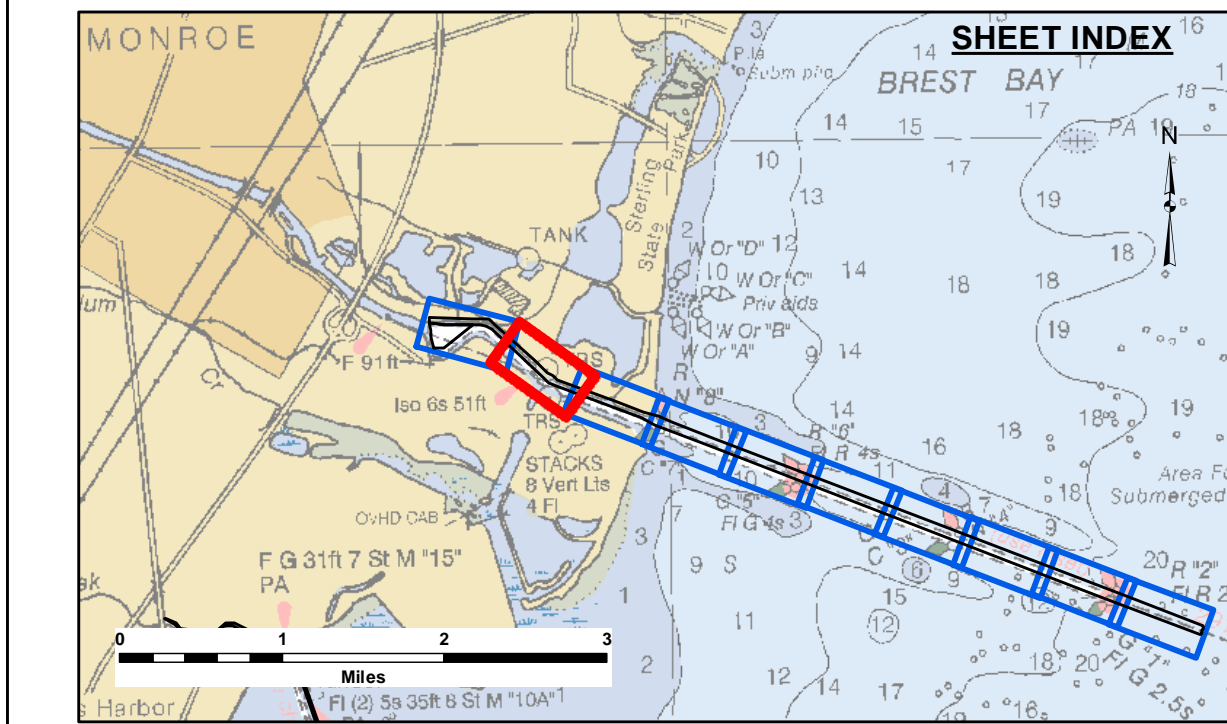
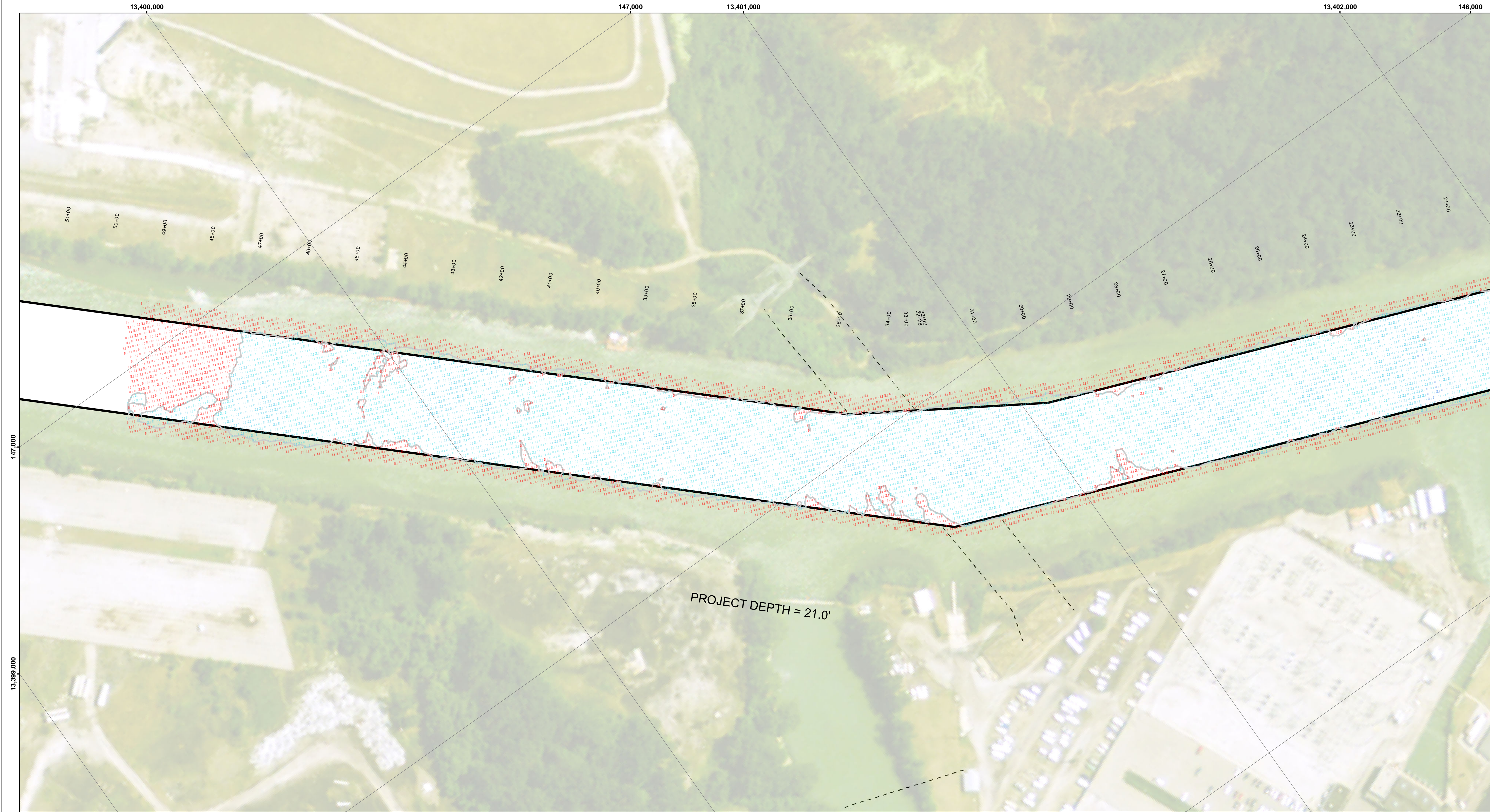
Approved: \_\_\_\_\_

Checked By: \_\_\_\_\_

Plotted By: \_\_\_\_\_

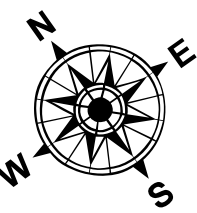
Surveyed By: \_\_\_\_\_



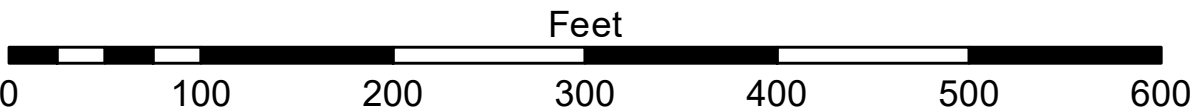


- LEGEND**
- ..... Cable Submarine
  - Cable Overhead
  - Placement Area
  - ⊥ Beacon, General
  - Contour Lines
  - ▭ Channel Limits

- SOUNDING LEGEND**
- LESS THAN PROJECT DEPTH
  - PROJECT DEPTH
  - PROJECT DEPTH +1'
  - PROJECT DEPTH +2'
  - PROJECT DEPTH +3'
  - PROJECT DEPTH +4'
  - PROJECT DEPTH +5'



1 inch = 100 feet



**NOTES:**

THE INFORMATION DEPICTED ON THIS MAP REPRESENTS THE RESULTS OF SURVEYS MADE ON THE DATES INDICATED AND CAN ONLY BE CONSIDERED AS INDICATING THE GENERAL CONDITIONS AT THE TIME.

FOR MULTIBEAM SURVEYS: THE SOUNDINGS INDICATED HEREIN ARE GENERALIZED DEPTHS AND ARE NOT REPRESENTATIVE OF THE FULL DATASET. THE SOUNDINGS REPRESENT THE MINIMUM DEPTH FOUND WITHIN THE 10X10 FOOT AREA CENTERED ON THE TEXT, DERIVED FROM A 1X1 FOOT AVERAGE DATASET AT CELL CENTER. THIS MAP SHOULD NOT BE USED FOR CHANNEL CLEARANCE OR VOLUME COMPUTATIONS. MINIMUM DEPTH DATA IS PRODUCED FOR STRIKE/SOAL REMOVAL OPERATIONS AND NOTICE TO NAVIGATION INTERESTS.

HORIZONTAL GRID DATUM BASED ON MICHIGAN STATE PLANE COORDINATE SYSTEM, LAMBERT PROJECTION, SOUTH ZONE (2113), NORTH AMERICAN DATUM 1983, U.S. SURVEY FOOT.

ALL SOUNDINGS ARE REFERENCED TO INTERNATIONAL GREAT LAKES DATUM OF 1985 (IGLD85).

PROJECT DEPTHS FOR MONROE HARBOR ARE 21.0' AND THE TURNING BASIN PROJECT DEPTH IS 18.5'

TIDE VALUES ARE DERIVED FROM THE NATIONAL OCEANIC AND ATMOSPHERIC ADMINISTRATION (NOAA) WATER LEVEL STATIONS: FERMI POWER PLANT, MI (#9063090).

POSITIONING: APPLANIX POS-MV4 W/ VRS/RTK OR MARINESTAR GNSS. MOTION COMPENSATION: APPLANIX POS-MV4. SONAR: RSONIC 2024 (MULTIBEAM) OR ODOM CV-300 (SINGLEBEAM) SOFTWARE: HYPACK

2010 AERIAL PHOTOGRAPHY DATA SOURCE: USGS  
ALL COORDINATES ARE IN U.S. SURVEY FEET.



**DISCLAIMER:** The data represented by the results of data collection is provided for informational purposes only. The U.S. Army Corps of Engineers does not warrant the accuracy, completeness, or reliability of the data for any purpose other than its intended purpose. The user is responsible for the results of any application of the data for other than its intended purpose.

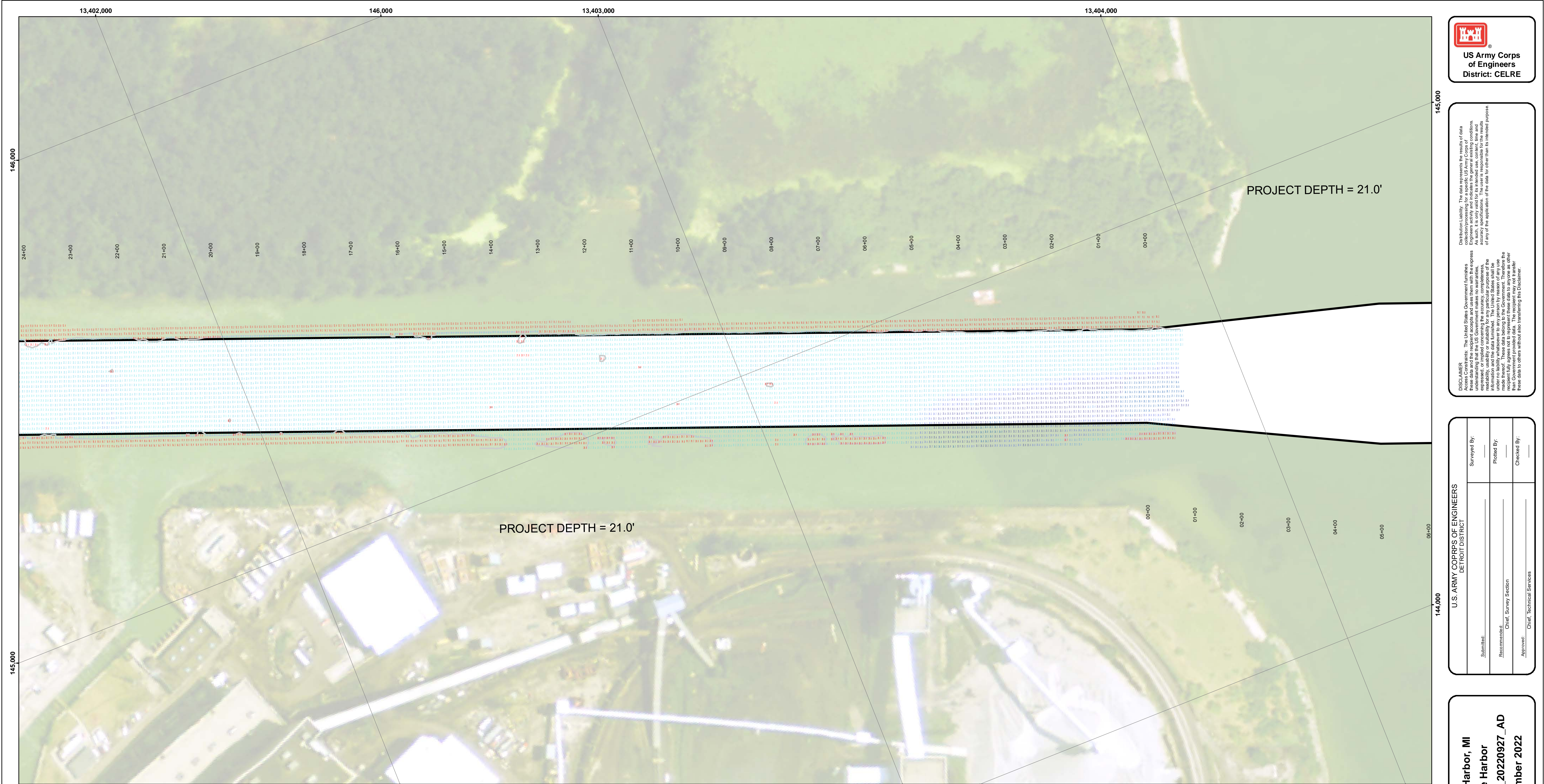
**ACCESS AGREEMENT:** The United States Government furnishes these data and the recipient accepts and uses them with the express understanding that the data are not to be distributed, reproduced, or used in any way that would imply endorsement, approval, or implied warranty of the accuracy, completeness, or reliability of the data for any purpose other than its intended purpose. The recipient agrees to indemnify the United States Government from and against all claims, damages, losses, and expenses, including reasonable attorneys' fees, incurred by the United States Government as a result of the recipient's use of the data for any purpose other than its intended purpose.

U.S. ARMY CORPS OF ENGINEERS DETROIT DISTRICT	Submitted:	Surveyed By:
	Recommended:	Plotted By:
	Chief, Survey Section	
	Approved:	Checked By:
	Chief, Technical Services	

**Monroe Harbor, MI**  
**Monroe Harbor**  
**MH\_01\_MNH\_20220927\_AD**  
**27 September 2022**

**Sheet Reference Number**  
**2 of 10**





The data on this map represents the results of data collection activities for a specific US Army Corps of Engineers activity and indicates the general existing conditions. The data is not intended to be used for any purpose other than the intended purpose of the application of the data for other than its intended purpose. The user is responsible for the results of any of the application of the data for other than its intended purpose.

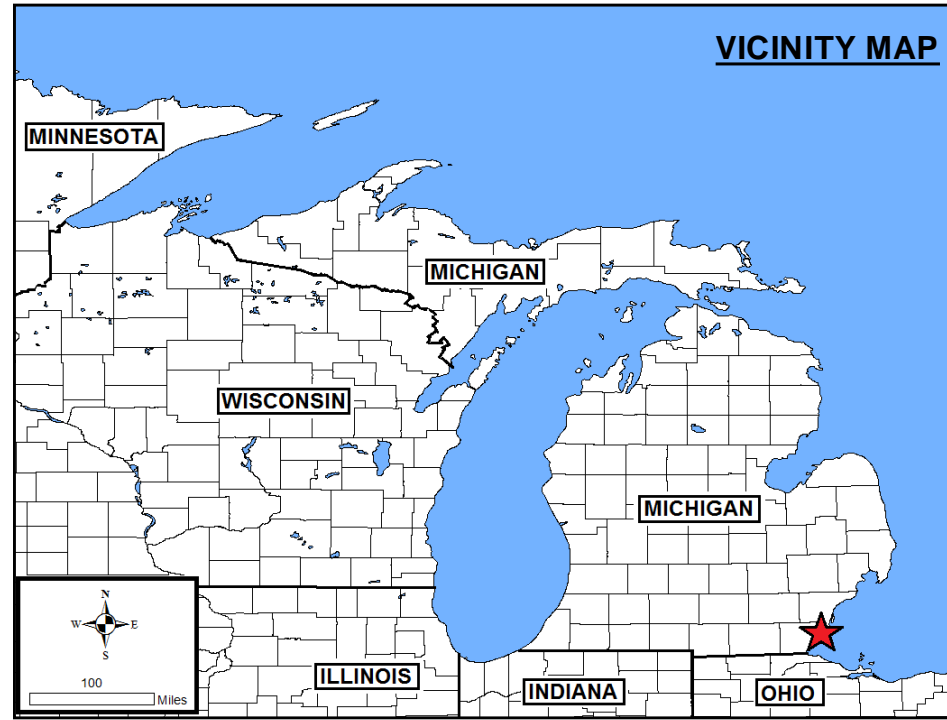
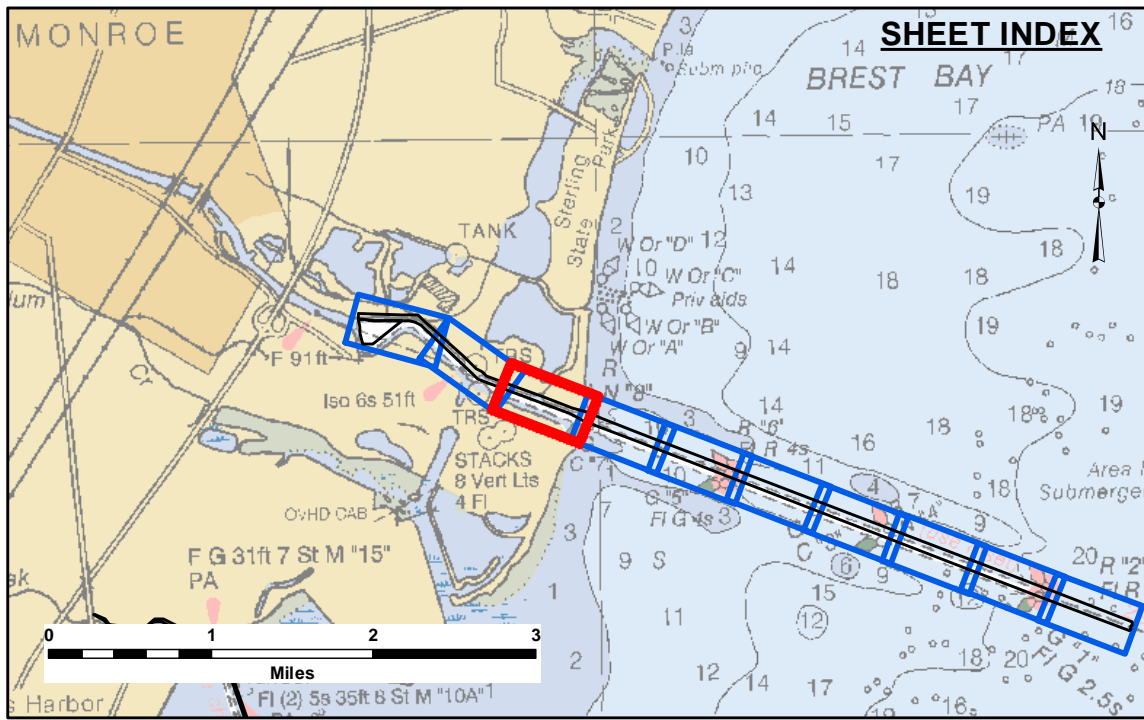
Access Constraints: The United States Government furnishes these data and the recipient accepts and uses them with the express understanding that the data are not to be used for any purpose other than the intended purpose of the application of the data for other than its intended purpose. The data are not to be used for any purpose other than the intended purpose of the application of the data for other than its intended purpose. The data are not to be used for any purpose other than the intended purpose of the application of the data for other than its intended purpose.

U.S. ARMY CORPS OF ENGINEERS DETROIT DISTRICT	
Submitted:	Surveyed By:
Recommended: Chief, Survey Section	Plotted By:
Approved: Chief, Technical Services	Checked By:

Monroe Harbor, MI  
Monroe Harbor  
MH\_01\_MNH\_20220927\_AD  
27 September 2022

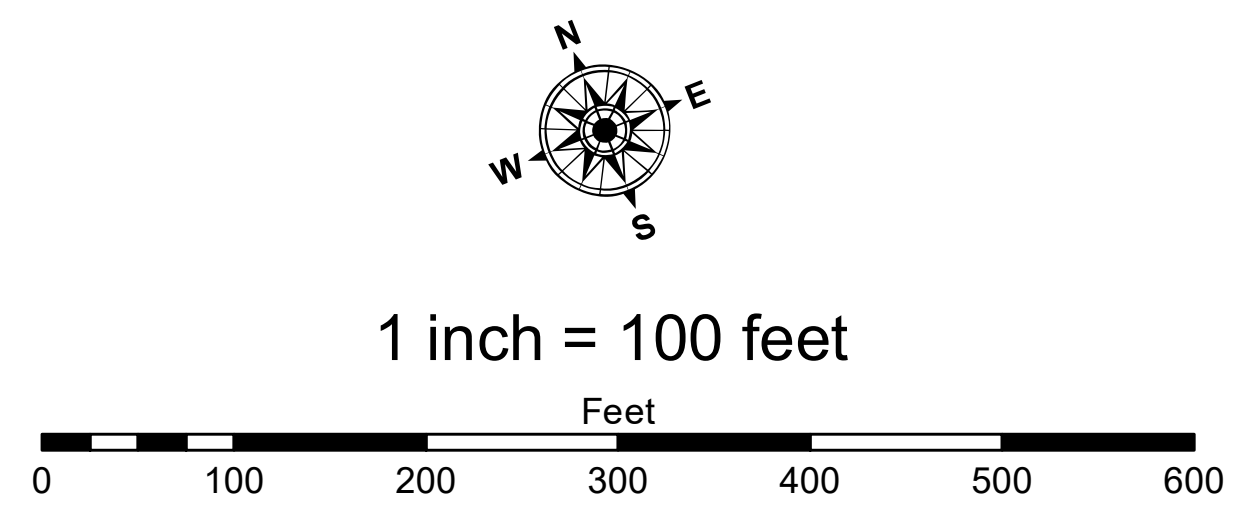
Sheet  
Reference  
Number  
3 of 10

Revision Number:  
4.2-2022060420



- LEGEND**
- ..... Cable Submarine
  - Cable Overhead
  - Placement Area
  - ⊥ Beacon, General
  - Contour Lines
  - Channel Limits

- SOUNDING LEGEND**
- LESS THAN PROJECT DEPTH
  - PROJECT DEPTH
  - PROJECT DEPTH +1'
  - PROJECT DEPTH +2'
  - PROJECT DEPTH +3'
  - PROJECT DEPTH +4'
  - PROJECT DEPTH +5'



**NOTES:**

THE INFORMATION DEPICTED ON THIS MAP REPRESENTS THE RESULTS OF SURVEYS MADE ON THE DATES INDICATED AND CAN ONLY BE CONSIDERED AS INDICATING THE GENERAL CONDITIONS AT THE TIME.

FOR MULTIBEAM SURVEYS: THE SOUNDINGS INDICATED HEREIN ARE GENERALIZED DEPTHS AND ARE NOT REPRESENTATIVE OF THE FULL DATASET. THE SOUNDINGS REPRESENT THE MINIMUM DEPTH FOUND WITHIN THE 10X10 FOOT AREA CENTERED ON THE TEXT, DERIVED FROM A 1X1 FOOT AVERAGE DATASET AT CELL CENTER. THIS MAP SHOULD NOT BE USED FOR CHANNEL CLEARANCE OR VOLUME COMPUTATIONS. MINIMUM DEPTH DATA IS PRODUCED FOR STRIKE/SOAL REMOVAL OPERATIONS AND NOTICE TO NAVIGATION INTERESTS.

HORIZONTAL GRID DATUM BASED ON MICHIGAN STATE PLANE COORDINATE SYSTEM, LAMBERT PROJECTION, SOUTH ZONE (2113), NORTH AMERICAN DATUM 1983, U.S. SURVEY FOOT.

ALL SOUNDINGS ARE REFERENCED TO INTERNATIONAL GREAT LAKES DATUM OF 1985 (IGLD85).

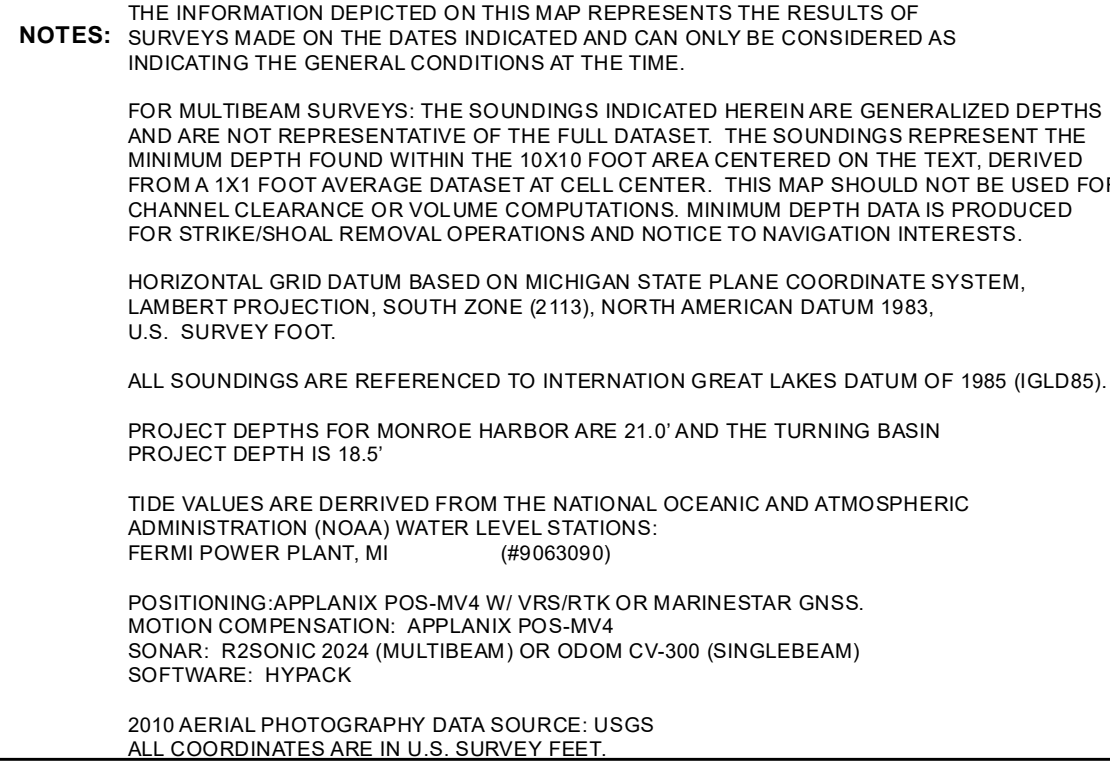
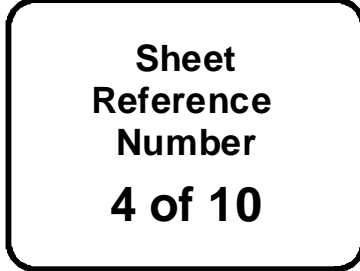
PROJECT DEPTHS FOR MONROE HARBOR ARE 21.0' AND THE TURNING BASIN PROJECT DEPTH IS 18.5'

TIDE VALUES ARE DERIVED FROM THE NATIONAL OCEANIC AND ATMOSPHERIC ADMINISTRATION (NOAA) WATER LEVEL STATIONS: FERMI POWER PLANT, MI (#9063090)

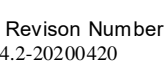
POSITIONING: APPLANIX POS-MV4 W/ VRS/RTK OR MARINESTAR GNSS. MOTION COMPENSATION: APPLANIX POS-MV4. SONAR: RSONIC 2024 (MULTIBEAM) OR ODOM CV-300 (SINGLEBEAM) SOFTWARE: HYPACK

2010 AERIAL PHOTOGRAPHY DATA SOURCE: USGS  
ALL COORDINATES ARE IN U.S. SURVEY FEET.

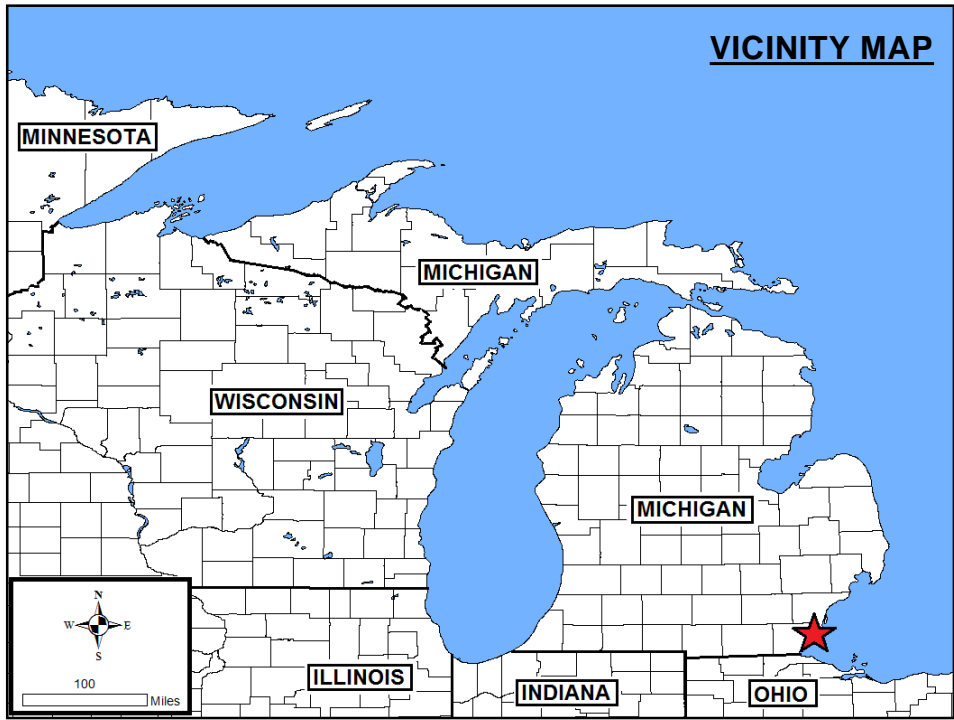
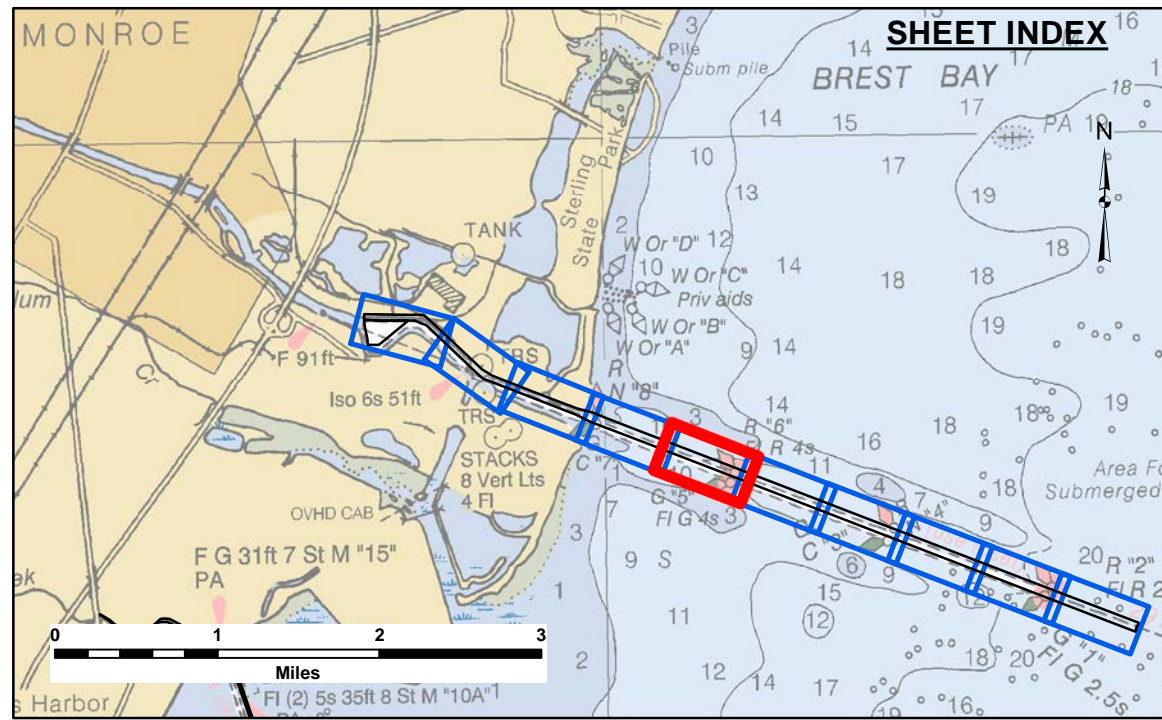
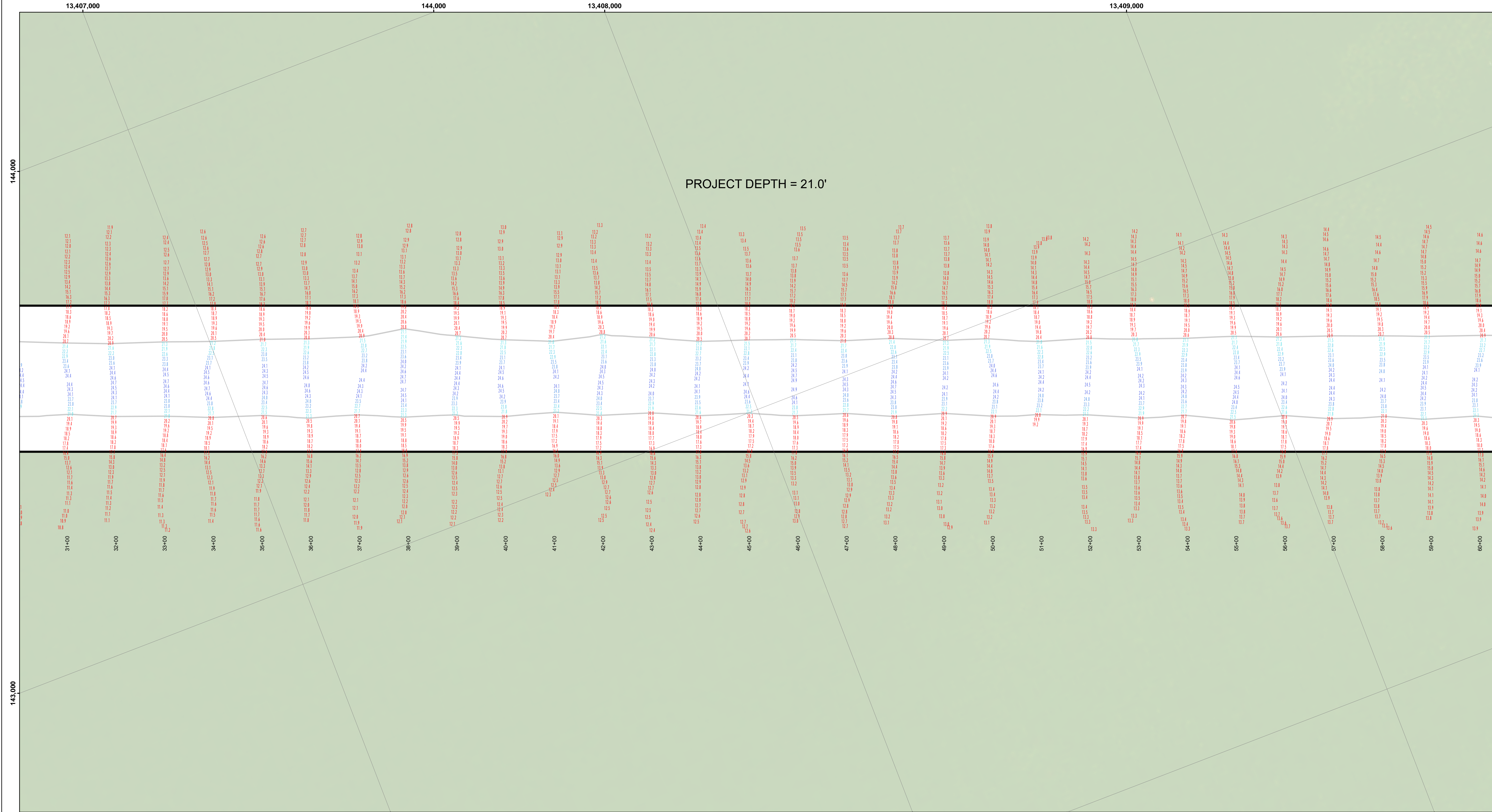






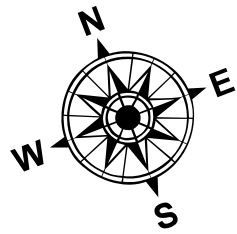




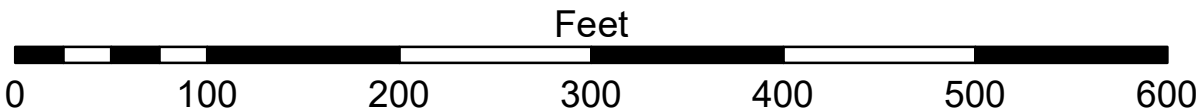


- LEGEND**
- Cable Submarine
  - - - Cable Overhead
  - Placement Area
  - ⊥ Beacon, General
  - Contour Lines
  - ▭ Channel Limits

- SOUNDING LEGEND**
- LESS THAN PROJECT DEPTH
  - PROJECT DEPTH
  - PROJECT DEPTH +1'
  - PROJECT DEPTH +2'
  - PROJECT DEPTH +3'
  - PROJECT DEPTH +4'
  - PROJECT DEPTH +5'



1 inch = 100 feet



**NOTES:**

THE INFORMATION DEPICTED ON THIS MAP REPRESENTS THE RESULTS OF SURVEYS MADE ON THE DATES INDICATED AND CAN ONLY BE CONSIDERED AS INDICATING THE GENERAL CONDITIONS AT THE TIME.

FOR MULTIBEAM SURVEYS: THE SOUNDINGS INDICATED HEREIN ARE GENERALIZED DEPTHS AND ARE NOT REPRESENTATIVE OF THE FULL DATASET. THE SOUNDINGS REPRESENT THE MINIMUM DEPTH FOUND WITHIN THE 10X10 FOOT AREA CENTERED ON THE TEXT, DERIVED FROM A 1X1 FOOT AVERAGE DATASET AT CELL CENTER. THIS MAP SHOULD NOT BE USED FOR CHANNEL CLEARANCE OR VOLUME COMPUTATIONS. MINIMUM DEPTH DATA IS PRODUCED FOR STRIKE/SOAL REMOVAL OPERATIONS AND NOTICE TO NAVIGATION INTERESTS.

HORIZONTAL GRID DATUM BASED ON MICHIGAN STATE PLANE COORDINATE SYSTEM, LAMBERT PROJECTION, SOUTH ZONE (2113), NORTH AMERICAN DATUM 1983, U.S. SURVEY FOOT.

ALL SOUNDINGS ARE REFERENCED TO INTERNATIONAL GREAT LAKES DATUM OF 1985 (IGLD85).

PROJECT DEPTHS FOR MONROE HARBOR ARE 21.0' AND THE TURNING BASIN PROJECT DEPTH IS 18.5'

TIDE VALUES ARE DERIVED FROM THE NATIONAL OCEANIC AND ATMOSPHERIC ADMINISTRATION (NOAA) WATER LEVEL STATIONS: FERRIS POWER PLANT, MI (#9063090)

POSITIONING: APPLANIX POS-MV4 W/ VRS/RTK OR MARINESTAR GNSS.  
MOTION COMPENSATION: APPLANIX POS-MV4  
SONAR: RESONIC 2024 (MULTIBEAM) OR ODOM CV-300 (SINGLEBEAM)  
SOFTWARE: HYPACK

2010 AERIAL PHOTOGRAPHY DATA SOURCE: USGS  
ALL COORDINATES ARE IN U.S. SURVEY FEET.



Public Use Liability: The data represents the results of data collection operations for a specific US Army Corps of Engineers activity and indicates the general existing conditions. The user is responsible for the results of any application of the data for other than its intended purpose. The user is responsible for the results of any application of the data for other than its intended purpose.

DISCLAIMER: The United States Government furnishes these data and the recipient accepts and uses them with the express understanding that the data are not to be used for any purpose, expressed, or implied concerning the accuracy, completeness, reliability, usability or suitability for any particular purpose of the recipient. The recipient may not transfer, in whole or in part, these data to others without also transferring the Disclaimer.

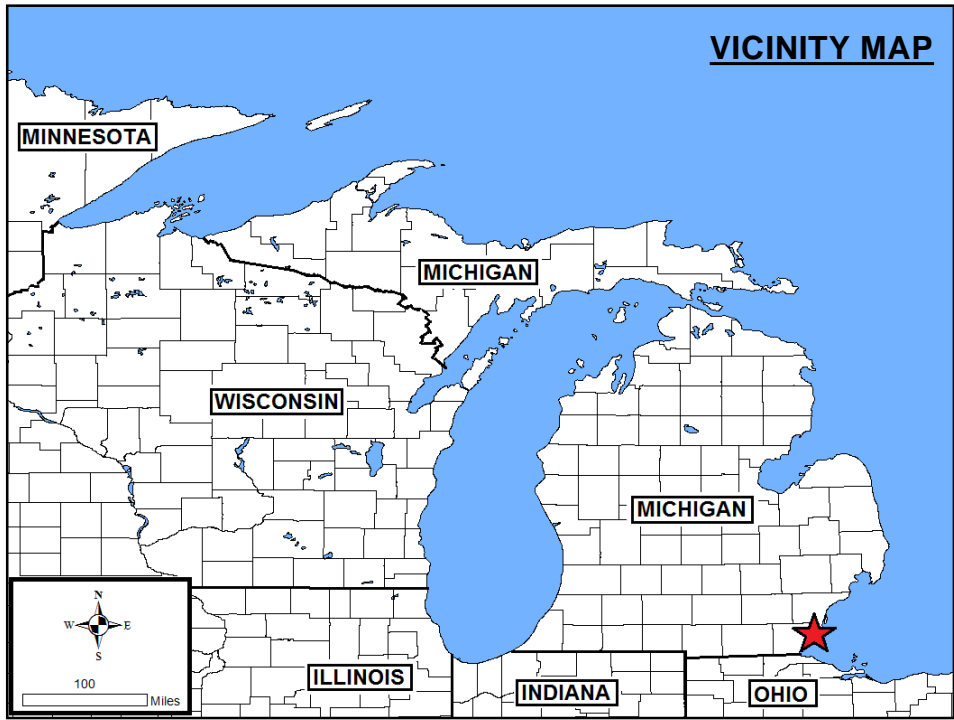
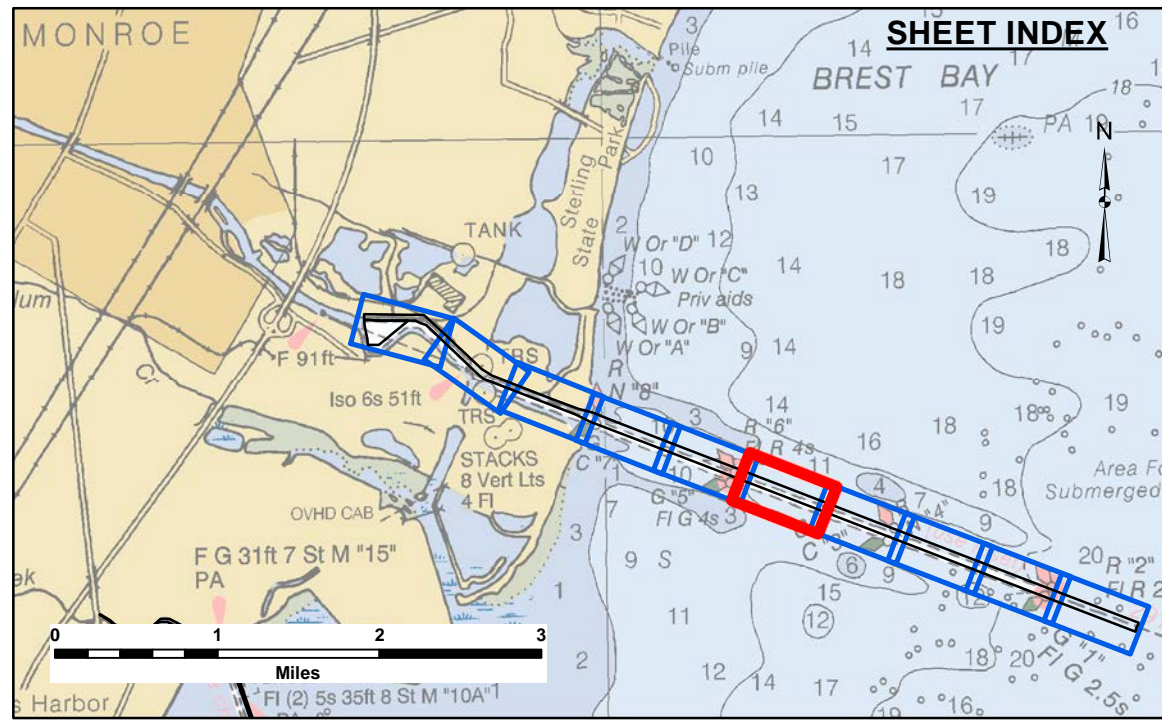
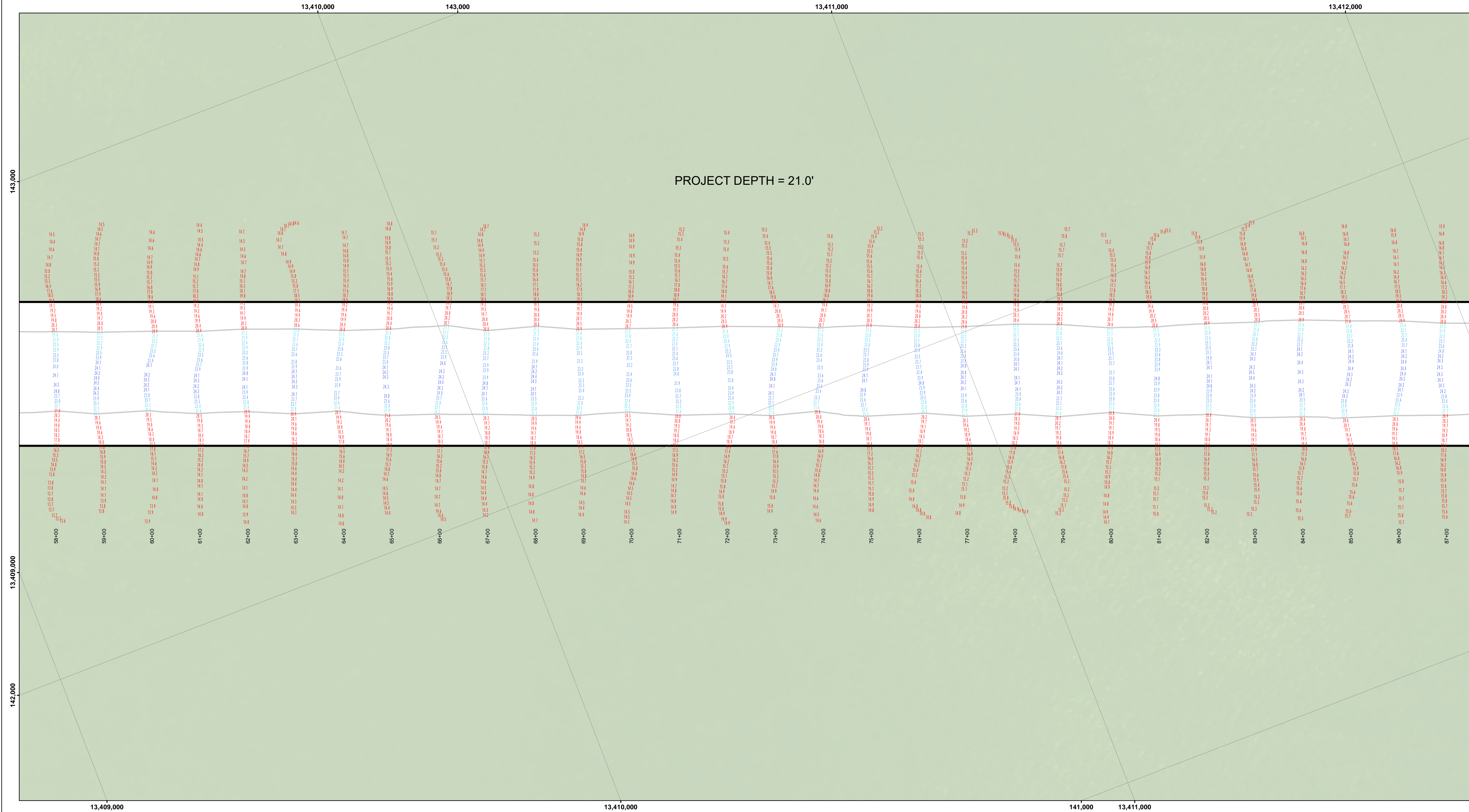
Submitted:	Surveyed By:
	Plotted By:
	Checked By:
	Approved:

Monroe Harbor, MI  
Monroe Harbor  
MH\_01\_MNH\_20220504\_CS  
04 May 2022

Sheet  
Reference  
Number  
5 of 10

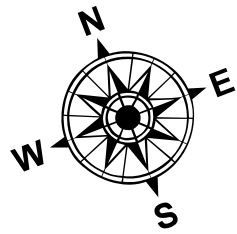
Revision Number:  
4.2-2020MAY20



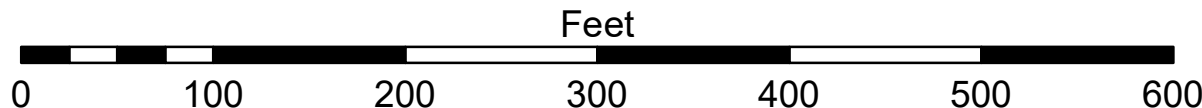


- LEGEND**
- Cable Submarine
  - - - Cable Overhead
  - Placement Area
  - Beacon, General
  - Contour Lines
  - Channel Limits

- SOUNDING LEGEND**
- LESS THAN PROJECT DEPTH
  - PROJECT DEPTH
  - PROJECT DEPTH +1'
  - PROJECT DEPTH +2'
  - PROJECT DEPTH +3'
  - PROJECT DEPTH +4'
  - PROJECT DEPTH +5'



1 inch = 100 feet



**NOTES:**

THE INFORMATION DEPICTED ON THIS MAP REPRESENTS THE RESULTS OF SURVEYS MADE ON THE DATES INDICATED AND CAN ONLY BE CONSIDERED AS INDICATING THE GENERAL CONDITIONS AT THE TIME.

FOR MULTIBEAM SURVEYS: THE SOUNDINGS INDICATED HEREIN ARE GENERALIZED DEPTHS AND ARE NOT REPRESENTATIVE OF THE FULL DATASET. THE SOUNDINGS REPRESENT THE MINIMUM DEPTH FOUND WITHIN THE 10X10 FOOT AREA CENTERED ON THE TEXT, DERIVED FROM A 1X1 FOOT AVERAGE DATASET AT CELL CENTER. THIS MAP SHOULD NOT BE USED FOR CHANNEL CLEARANCE OR VOLUME COMPUTATIONS. MINIMUM DEPTH DATA IS PRODUCED FOR STRIKE/SOAL REMOVAL OPERATIONS AND NOTICE TO NAVIGATION INTERESTS.

HORIZONTAL GRID DATUM BASED ON MICHIGAN STATE PLANE COORDINATE SYSTEM, LAMBERT PROJECTION, SOUTH ZONE (2113), NORTH AMERICAN DATUM 1983, U.S. SURVEY FOOT.

ALL SOUNDINGS ARE REFERENCED TO INTERNATIONAL GREAT LAKES DATUM OF 1985 (IGLD85).

PROJECT DEPTHS FOR MONROE HARBOR ARE 21.0' AND THE TURNING BASIN PROJECT DEPTH IS 18.5'

TIDE VALUES ARE DERIVED FROM THE NATIONAL OCEANIC AND ATMOSPHERIC ADMINISTRATION (NOAA) WATER LEVEL STATIONS: FERMI POWER PLANT, MI (#9063090)

POSITIONING: APPLANIX POS-MV4 W/ VRS/RTK OR MARINESTAR GNSS. MOTION COMPENSATION: APPLANIX POS-MV4. SONAR: RESONIC 2024 (MULTIBEAM) OR ODOM CV-300 (SINGLEBEAM) SOFTWARE: HYPACK

2010 AERIAL PHOTOGRAPHY DATA SOURCE: USGS  
ALL COORDINATES ARE IN U.S. SURVEY FEET.

U.S. ARMY CORPS OF ENGINEERS  
DETROIT DISTRICT

Submitted: \_\_\_\_\_

Recommended: \_\_\_\_\_

Approved: \_\_\_\_\_

Surveyed By: \_\_\_\_\_

Plotted By: \_\_\_\_\_

Checked By: \_\_\_\_\_

Monroe Harbor, MI  
Monroe Harbor  
MH\_01\_MNH\_20220504\_CS  
04 May 2022

Sheet  
Reference  
Number  
6 of 10

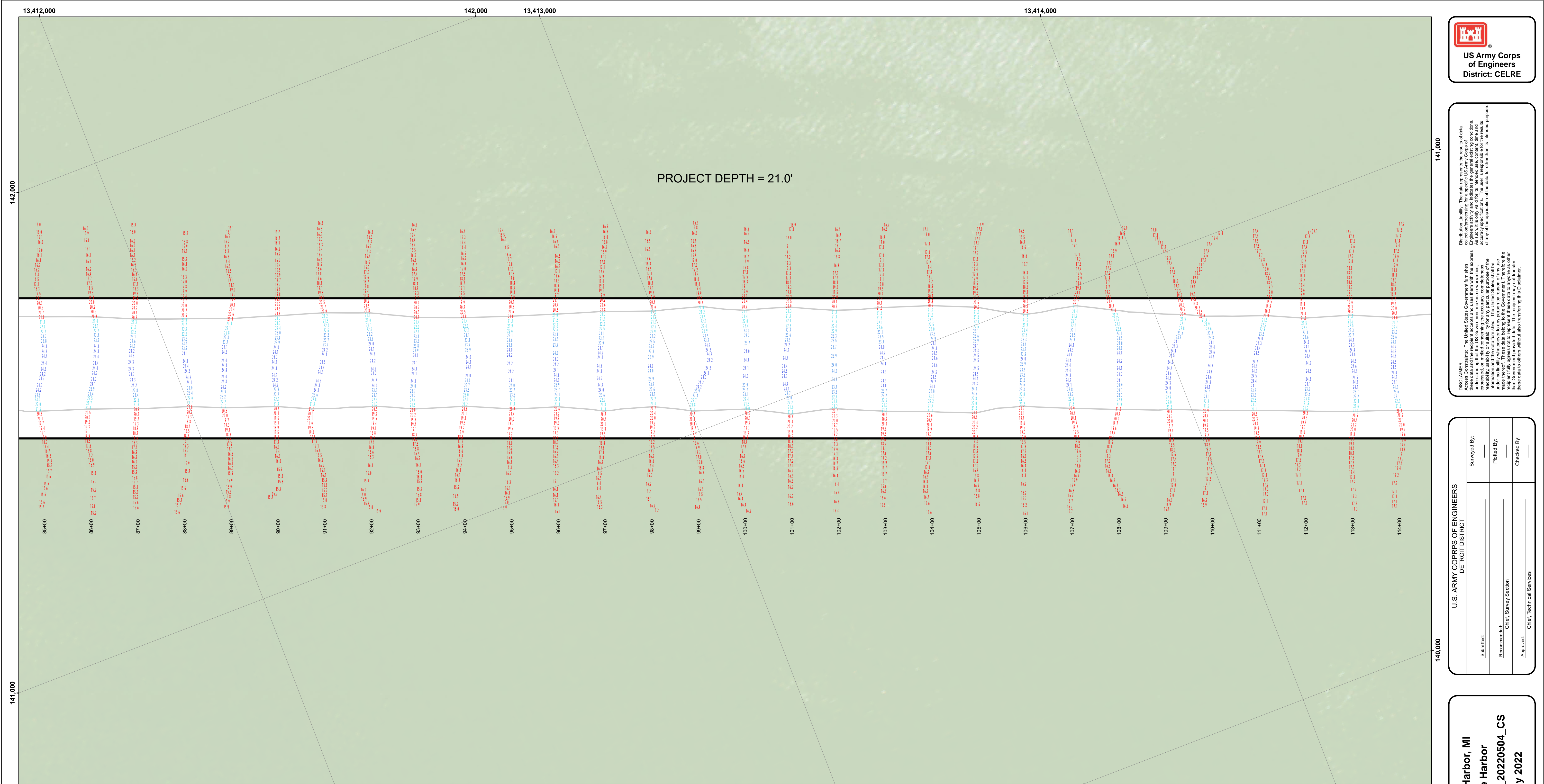
Revision Number:  
4.2-20200420

**US Army Corps of Engineers**  
District: CELRE

**DISCLAIMER:** The data presented in this map is the property of the U.S. Army Corps of Engineers and is provided for informational purposes only. It is not to be used for any purpose other than that intended by the Corps of Engineers. The user is responsible for the results of any application of the data for other than its intended purpose.

**DISCLAIMER:** The United States Government furnishes these data and the recipient accepts and uses them with the express understanding that the data are not to be used for any purpose other than that intended by the Government. The user is responsible for the results of any application of the data for other than its intended purpose.





**SHEET INDEX**

**VICINITY MAP**

**LEGEND**

- Cable Submarine
- - - Cable Overhead
- Placement Area
- ┆ Beacon, General
- Contour Lines
- ▭ Channel Limits

**SOUNDING LEGEND**

- LESS THAN PROJECT DEPTH
- PROJECT DEPTH
- PROJECT DEPTH +1'
- PROJECT DEPTH +2'
- PROJECT DEPTH +3'
- PROJECT DEPTH +4'
- PROJECT DEPTH +5'

**NOTES:**

THE INFORMATION DEPICTED ON THIS MAP REPRESENTS THE RESULTS OF SURVEYS MADE ON THE DATES INDICATED AND CAN ONLY BE CONSIDERED AS INDICATING THE GENERAL CONDITIONS AT THE TIME.

FOR MULTIBEAM SURVEYS: THE SOUNDINGS INDICATED HEREIN ARE GENERALIZED DEPTHS AND ARE NOT REPRESENTATIVE OF THE FULL DATASET. THE SOUNDINGS REPRESENT THE MINIMUM DEPTH FOUND WITHIN THE 10X10 FOOT AREA CENTERED ON THE TEXT, DERIVED FROM A 1X1 FOOT AVERAGE DATASET AT CELL CENTER. THIS MAP SHOULD NOT BE USED FOR CHANNEL CLEARANCE OR VOLUME COMPUTATIONS. MINIMUM DEPTH DATA IS PRODUCED FOR STRIKE/SOAL REMOVAL OPERATIONS AND NOTICE TO NAVIGATION INTERESTS.

HORIZONTAL GRID DATUM BASED ON MICHIGAN STATE PLANE COORDINATE SYSTEM, LAMBERT PROJECTION, SOUTH ZONE (2113), NORTH AMERICAN DATUM 1983, U.S. SURVEY FOOT.

ALL SOUNDINGS ARE REFERENCED TO INTERNATIONAL GREAT LAKES DATUM OF 1985 (IGLD85).

PROJECT DEPTHS FOR MONROE HARBOR ARE 21.0' AND THE TURNING BASIN PROJECT DEPTH IS 18.5'.

TIDE VALUES ARE DERIVED FROM THE NATIONAL OCEANIC AND ATMOSPHERIC ADMINISTRATION (NOAA) WATER LEVEL STATIONS: FERRIS POWER PLANT, MI (#9063090).

POSITIONING: APPLANIX POS-MV4 W/ VR5/RTK OR MARINESTAR GNSS.  
MOTION COMPENSATION: APPLANIX POS-MV4  
SONAR: RESONANT 2024 (MULTIBEAM) OR ODOM CV-300 (SINGLEBEAM)  
SOFTWARE: HYPACK

2010 AERIAL PHOTOGRAPHY DATA SOURCE: USGS  
ALL COORDINATES ARE IN U.S. SURVEY FEET.

**1 inch = 100 feet**

**U.S. ARMY CORPS OF ENGINEERS**  
DETROIT DISTRICT

Submitted: \_\_\_\_\_

Recommended: Chief, Survey Section

Approved: Chief, Technical Services

Surveyed By: \_\_\_\_\_

Plotted By: \_\_\_\_\_

Checked By: \_\_\_\_\_

**Monroe Harbor, MI**  
**Monroe Harbor**  
**MH\_01\_MNH\_20220504\_CS**  
**04 May 2022**

**Sheet Reference Number**  
**7 of 10**

Revision Number:  
4.2 (2020XW20)

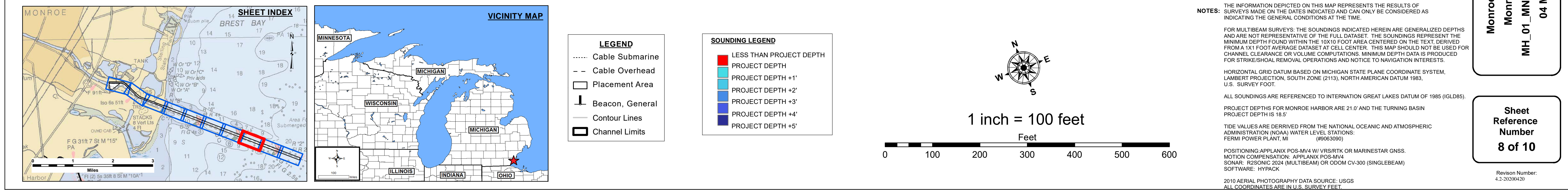


US Army Corps  
of Engineers  
District: CELRE

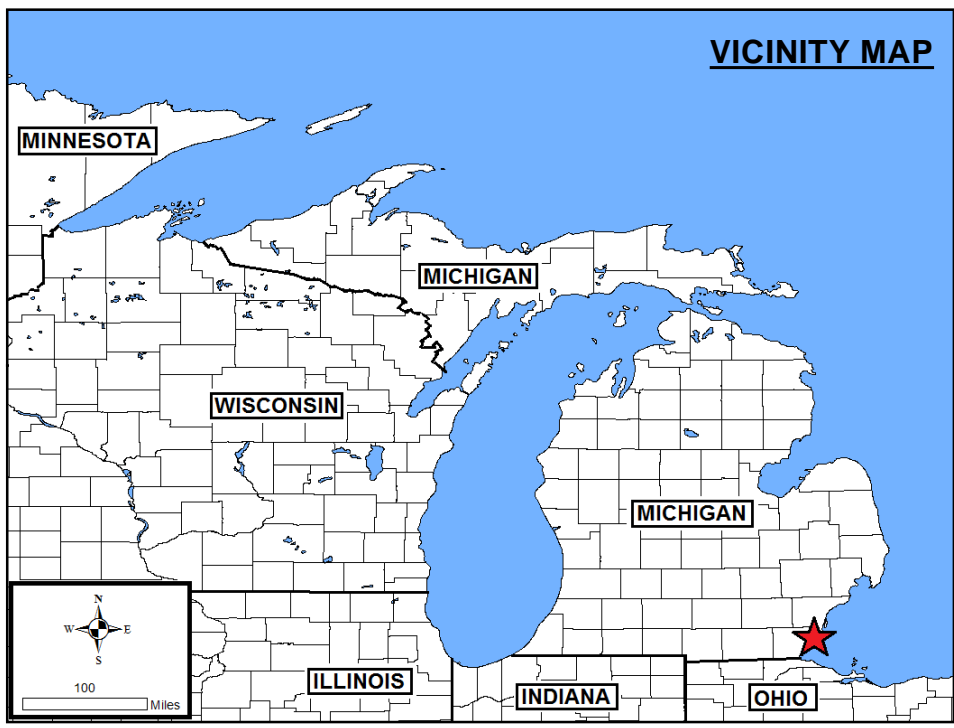
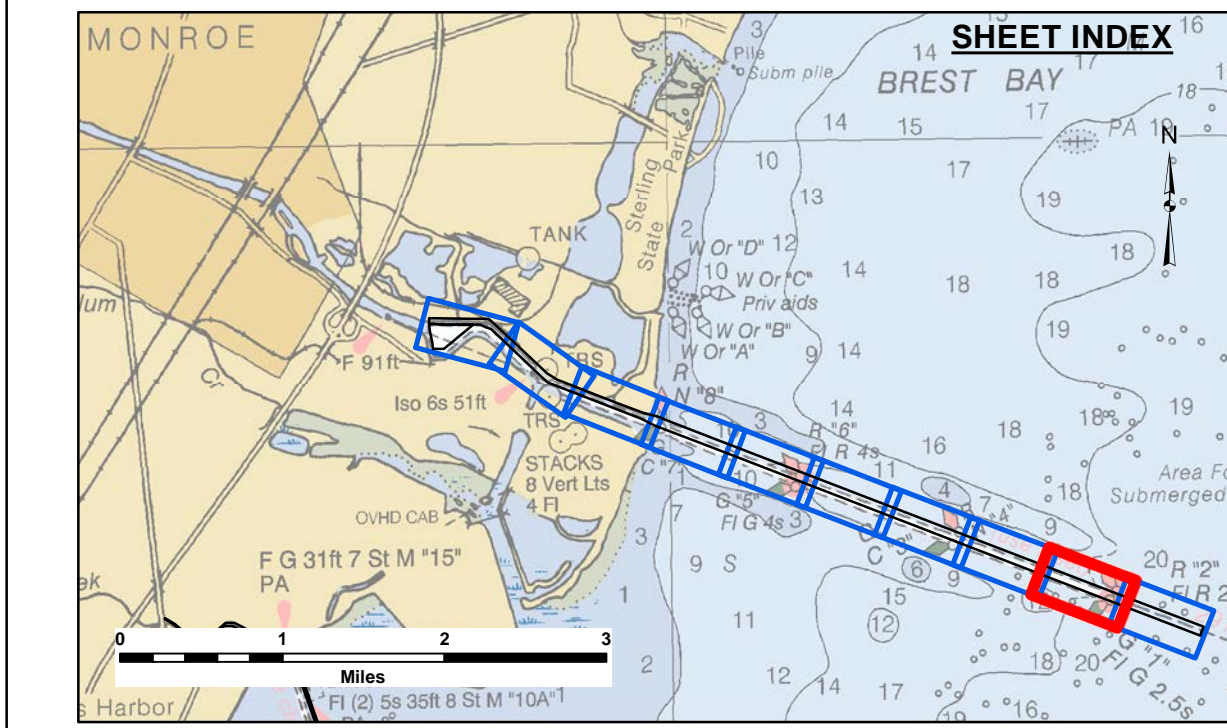
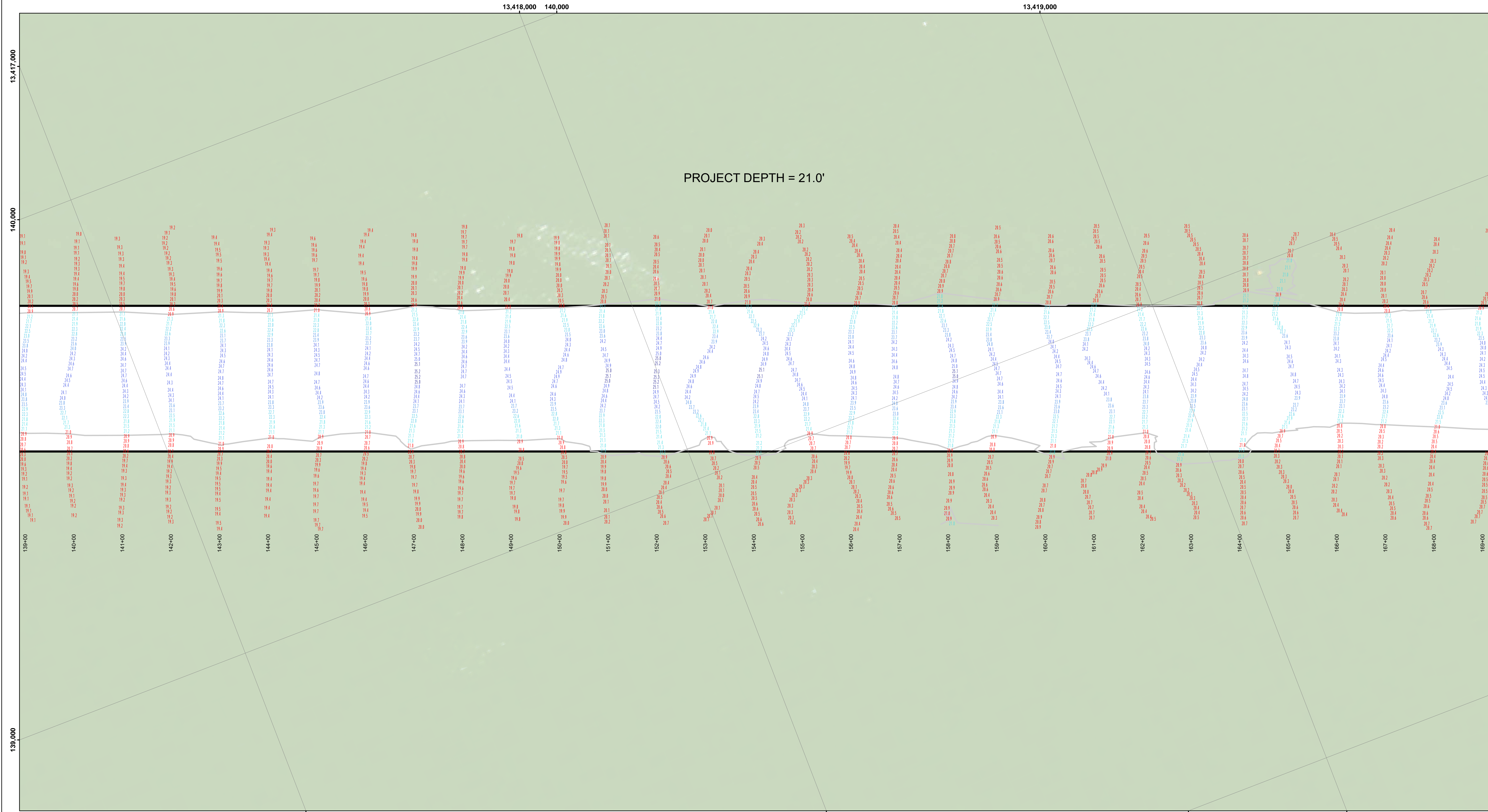
Product Use Liability: The data represents the results of data collection procedures for a specific US Army Corps of Engineers activity and indicates the general existing conditions. The user is responsible for the results of any of the application of the data for other than its intended purpose.

DISCLAIMER: The United States Government furnishes these data and the recipient accepts and uses them with the express understanding that the data are not to be used for any purpose not expressed, or implied concerning the accuracy, completeness, reliability, usability or suitability for any particular purpose of the recipient. The recipient is responsible for the results of any use under no liability whatsoever to any person by reason of any use made thereof. These data belong to the Government. Therefore the recipient may not transfer, copy, reproduce, or otherwise disseminate these data to others without also transferring the Disclaimer.



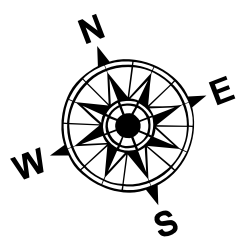




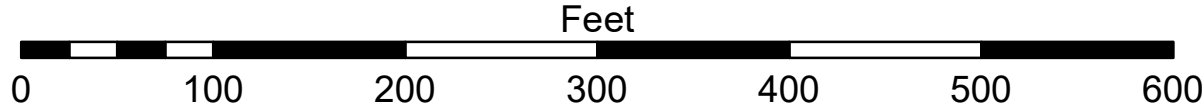


- LEGEND**
- Cable Submarine
  - - - Cable Overhead
  - Placement Area
  - ⊥ Beacon, General
  - Contour Lines
  - ▭ Channel Limits

- SOUNDING LEGEND**
- LESS THAN PROJECT DEPTH
  - PROJECT DEPTH
  - PROJECT DEPTH +1'
  - PROJECT DEPTH +2'
  - PROJECT DEPTH +3'
  - PROJECT DEPTH +4'
  - PROJECT DEPTH +5'



1 inch = 100 feet



**NOTES:**

THE INFORMATION DEPICTED ON THIS MAP REPRESENTS THE RESULTS OF SURVEYS MADE ON THE DATES INDICATED AND CAN ONLY BE CONSIDERED AS INDICATING THE GENERAL CONDITIONS AT THE TIME.

FOR MULTIBEAM SURVEYS: THE SOUNDINGS INDICATED HEREIN ARE GENERALIZED DEPTHS AND ARE NOT REPRESENTATIVE OF THE FULL DATASET. THE SOUNDINGS REPRESENT THE MINIMUM DEPTH FOUND WITHIN THE 10X10 FOOT AREA CENTERED ON THE TEXT, DERIVED FROM A 1X1 FOOT AVERAGE DATASET AT CELL CENTER. THIS MAP SHOULD NOT BE USED FOR CHANNEL CLEARANCE OR VOLUME COMPUTATIONS. MINIMUM DEPTH DATA IS PRODUCED FOR STRIKE/SOAL REMOVAL OPERATIONS AND NOTICE TO NAVIGATION INTERESTS.

HORIZONTAL GRID DATUM BASED ON MICHIGAN STATE PLANE COORDINATE SYSTEM, LAMBERT PROJECTION, SOUTH ZONE (2113), NORTH AMERICAN DATUM 1983, U.S. SURVEY FOOT.

ALL SOUNDINGS ARE REFERENCED TO INTERNATIONAL GREAT LAKES DATUM OF 1985 (IGLD85).

PROJECT DEPTHS FOR MONROE HARBOR ARE 21.0' AND THE TURNING BASIN PROJECT DEPTH IS 18.5'

TIDE VALUES ARE DERIVED FROM THE NATIONAL OCEANIC AND ATMOSPHERIC ADMINISTRATION (NOAA) WATER LEVEL STATIONS: FERRIS POWER PLANT, MI (#9063090)

POSITIONING: APPLANIX POS-MV4 W/ VRS/RTK OR MARINESTAR GNSS. MOTION COMPENSATION: APPLANIX POS-MV4. SONAR: RESONANC 2024 (MULTIBEAM) OR ODOM CV-300 (SINGLEBEAM) SOFTWARE: HYPACK

2010 AERIAL PHOTOGRAPHY DATA SOURCE: USGS  
ALL COORDINATES ARE IN U.S. SURVEY FEET.



By using this data, the user represents the results of data collection operations for a specific US Army Corps of Engineers activity and indicates the general existing conditions. The user is responsible for the results of any of the application of the data for other than its intended purpose.

DISCLAIMER: The United States Government furnishes these data and the recipient accepts and uses them with the express understanding that the data are not to be used for any purpose, expressed, or implied concerning the accuracy, completeness, reliability, usability or suitability for any particular purpose of the user. The recipient understands that the data are provided under no liability whatsoever to any person by reason of any use made thereof. These data belong to the Government. Therefore the recipient may not transfer, copy, reproduce, or otherwise use these data to others without also transferring the Disclaimer.

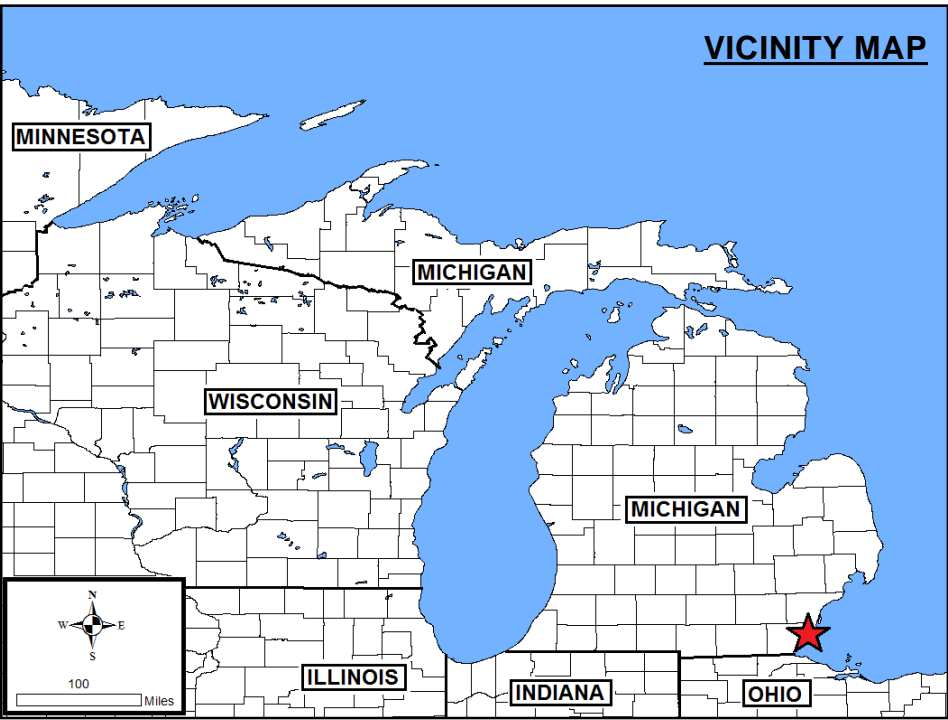
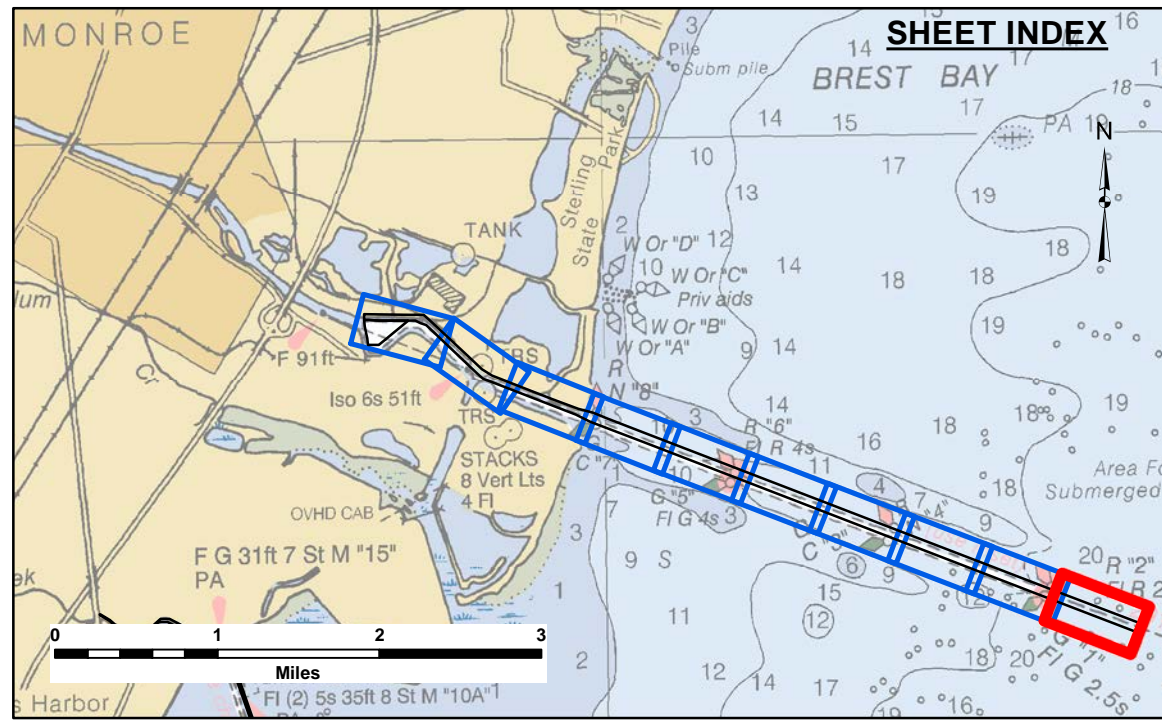
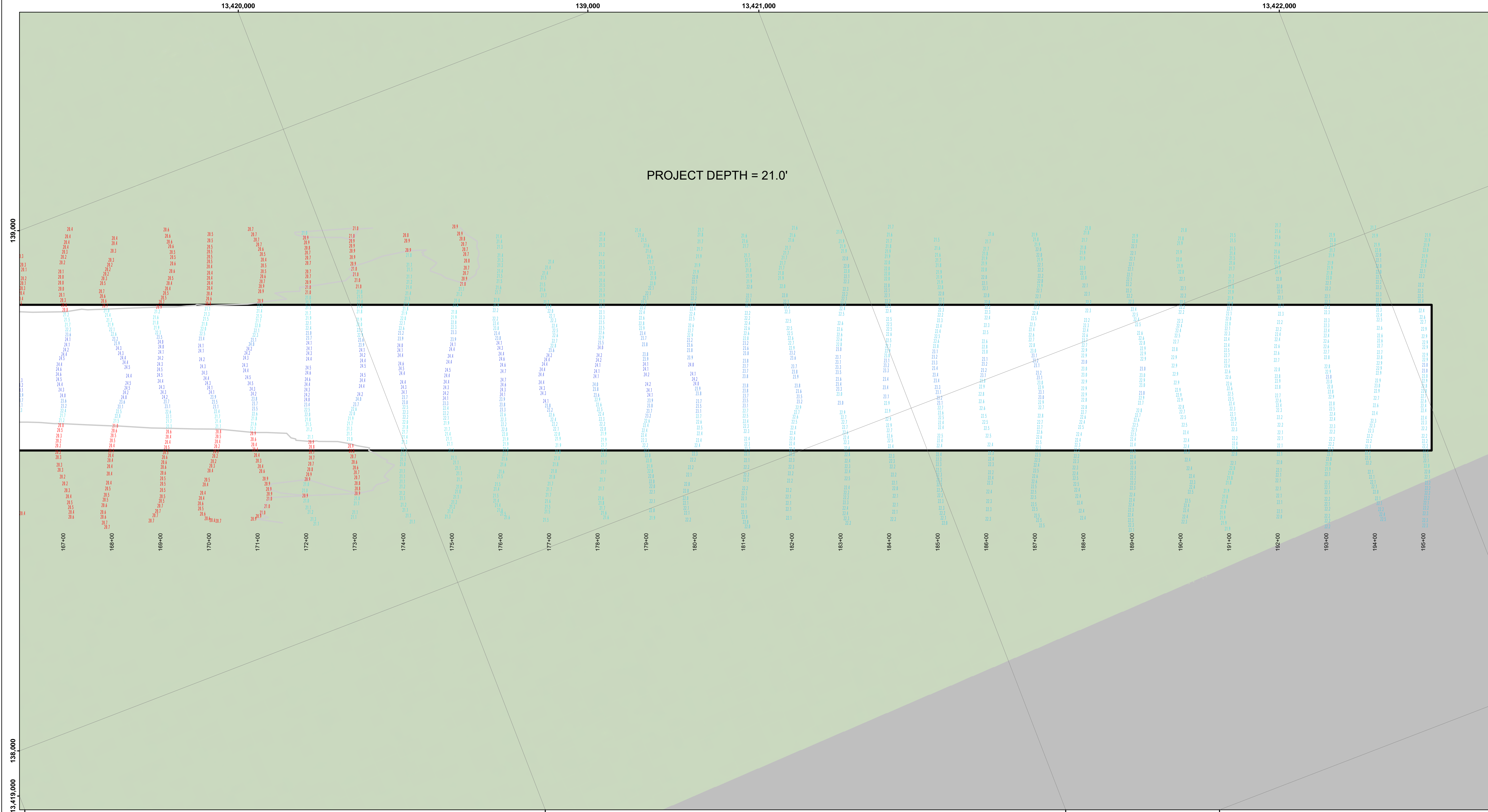
Submitted:	Surveyed By:
Recommended:	Plotted By:
Approved:	Checked By:
Chief, Survey Section	
Chief, Technical Services	

Monroe Harbor, MI  
Monroe Harbor  
MH\_01\_MNH\_20220504\_CS  
04 May 2022

Sheet  
Reference  
Number  
9 of 10

Revision Number:  
4.2-2020MAY20



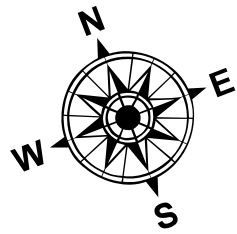


**LEGEND**

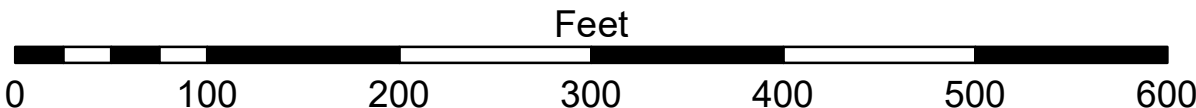
- Cable Submarine
- - - Cable Overhead
- Placement Area
- └ Beacon, General
- Contour Lines
- ▭ Channel Limits

**SOUNDING LEGEND**

- LESS THAN PROJECT DEPTH
- PROJECT DEPTH
- PROJECT DEPTH +1'
- PROJECT DEPTH +2'
- PROJECT DEPTH +3'
- PROJECT DEPTH +4'
- PROJECT DEPTH +5'



1 inch = 100 feet



NOTES:

THE INFORMATION DEPICTED ON THIS MAP REPRESENTS THE RESULTS OF SURVEYS MADE ON THE DATES INDICATED AND CAN ONLY BE CONSIDERED AS INDICATING THE GENERAL CONDITIONS AT THE TIME.

FOR MULTIBEAM SURVEYS: THE SOUNDINGS INDICATED HEREIN ARE GENERALIZED DEPTHS AND ARE NOT REPRESENTATIVE OF THE FULL DATASET. THE SOUNDINGS REPRESENT THE MINIMUM DEPTH FOUND WITHIN THE 10X10 FOOT AREA CENTERED ON THE TEXT, DERIVED FROM A 1X1 FOOT AVERAGE DATASET AT CELL CENTER. THIS MAP SHOULD NOT BE USED FOR CHANNEL CLEARANCE OR VOLUME COMPUTATIONS. MINIMUM DEPTH DATA IS PRODUCED FOR STRIKE/SOAL REMOVAL OPERATIONS AND NOTICE TO NAVIGATION INTERESTS.

HORIZONTAL GRID DATUM BASED ON MICHIGAN STATE PLANE COORDINATE SYSTEM, LAMBERT PROJECTION, SOUTH ZONE (2113), NORTH AMERICAN DATUM 1983, U.S. SURVEY FOOT.

ALL SOUNDINGS ARE REFERENCED TO INTERNATIONAL GREAT LAKES DATUM OF 1985 (IGLD85).

PROJECT DEPTHS FOR MONROE HARBOR ARE 21.0' AND THE TURNING BASIN PROJECT DEPTH IS 18.5'

TIDE VALUES ARE DERIVED FROM THE NATIONAL OCEANIC AND ATMOSPHERIC ADMINISTRATION (NOAA) WATER LEVEL STATIONS: FERMI POWER PLANT, MI (#9063090)

POSITIONING: APPLANIX POS-MV4 W/ VRS/RTK OR MARINESTAR GNSS. MOTION COMPENSATION: APPLANIX POS-MV4. SONAR: RESONIC 2024 (MULTIBEAM) OR ODOM CV-300 (SINGLEBEAM) SOFTWARE: HYPACK

2010 AERIAL PHOTOGRAPHY DATA SOURCE: USGS  
ALL COORDINATES ARE IN U.S. SURVEY FEET.



DISCLAIMER: The data presented on this map represents the results of data collection operations for a specific US Army Corps of Engineers activity and indicates the general existing conditions. The user is responsible for the results of any of the application of the data for other than its intended purpose. The United States Government furnishes these data and the recipient accepts and uses them with the express understanding that the Government makes no warranty, expressed, or implied concerning the accuracy, completeness, reliability, usability or suitability for any particular purpose of the data. The recipient agrees to hold the Government harmless under no liability whatsoever to any person by reason of any use made thereof. These data belong to the Government. Therefore the recipient may not transfer, copy, reproduce, or otherwise disseminate these data to others without also transferring the Disclaimer.

Submitted:	Surveyed By:	Plotted By:	Checked By:	
U.S. ARMY CORPS OF ENGINEERS DETROIT DISTRICT				

Monroe Harbor, MI  
Monroe Harbor  
MH\_01\_MNH\_20220504\_CS  
04 May 2022

Sheet  
Reference  
Number  
10 of 10

Revision Number:  
4.2 (20/04/20)