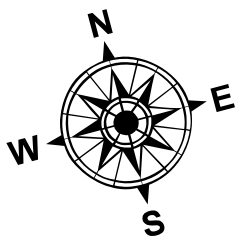
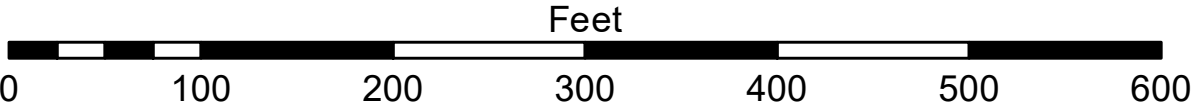


- LEGEND**
- ..... Cable Submarine
  - Cable Overhead
  - Placement Area
  - └ Beacon, General
  - Contour Lines
  - ▭ Channel Limits

- SOUNDING LEGEND**
- LESS THAN PROJECT DEPTH
  - PROJECT DEPTH
  - PROJECT DEPTH +1'
  - PROJECT DEPTH +2'
  - PROJECT DEPTH +3'
  - PROJECT DEPTH +4'
  - PROJECT DEPTH +5'



1 inch = 100 feet



**NOTES:**

THE INFORMATION DEPICTED ON THIS MAP REPRESENTS THE RESULTS OF SURVEYS MADE ON THE DATES INDICATED AND CAN ONLY BE CONSIDERED AS INDICATING THE GENERAL CONDITIONS AT THE TIME.

FOR MULTIBEAM SURVEYS: THE SOUNDINGS INDICATED HEREIN ARE GENERALIZED DEPTHS AND ARE NOT REPRESENTATIVE OF THE FULL DATASET. THE SOUNDINGS REPRESENT THE MINIMUM DEPTH FOUND WITHIN THE 10X10 FOOT AREA CENTERED ON THE TEXT, DERIVED FROM A 1X1 FOOT AVERAGE DATASET AT CELL CENTER. THIS MAP SHOULD NOT BE USED FOR CHANNEL CLEARANCE OR VOLUME COMPUTATIONS. MINIMUM DEPTH DATA IS PRODUCED FOR STRIKE/SOAL REMOVAL OPERATIONS AND NOTICE TO NAVIGATION INTERESTS.

HORIZONTAL GRID DATUM BASED ON MICHIGAN STATE PLANE COORDINATE SYSTEM, LAMBERT PROJECTION, SOUTH ZONE (2113), NORTH AMERICAN DATUM 1983, U.S. SURVEY FOOT.

ALL SOUNDINGS ARE REFERENCED TO INTERNATIONAL GREAT LAKES DATUM OF 1985 (IGLD85).

PROJECT DEPTHS FOR MONROE HARBOR ARE 21.0' AND THE TURNING BASIN PROJECT DEPTH IS 18.5'

TIDE VALUES ARE DERIVED FROM THE NATIONAL OCEANIC AND ATMOSPHERIC ADMINISTRATION (NOAA) WATER LEVEL STATIONS: FERRIS POWER PLANT, MI (#9063090)

POSITIONING: APPLANIX POS-MV4 W/ VRS/RTK OR MARINESTAR GNSS. MOTION COMPENSATION: APPLANIX POS-MV4. SONAR: RESONIC 2024 (MULTIBEAM) OR ODOM CV-300 (SINGLEBEAM) SOFTWARE: HYPACK

2010 AERIAL PHOTOGRAPHY DATA SOURCE: USGS  
ALL COORDINATES ARE IN U.S. SURVEY FEET.



**DISCLAIMER:** The data represents the results of data collection and processing for a specific US Army Corps of Engineers activity and indicates the general existing conditions. The data is not intended for use in any other manner than the intended purpose. The user is responsible for the results of any of the application of the data for other than its intended purpose.

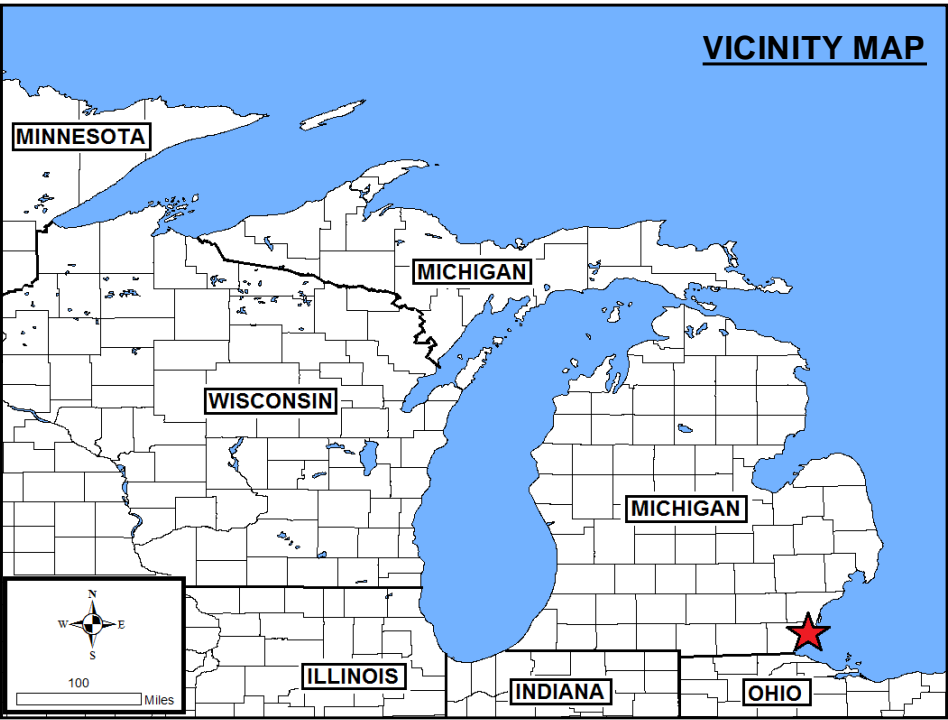
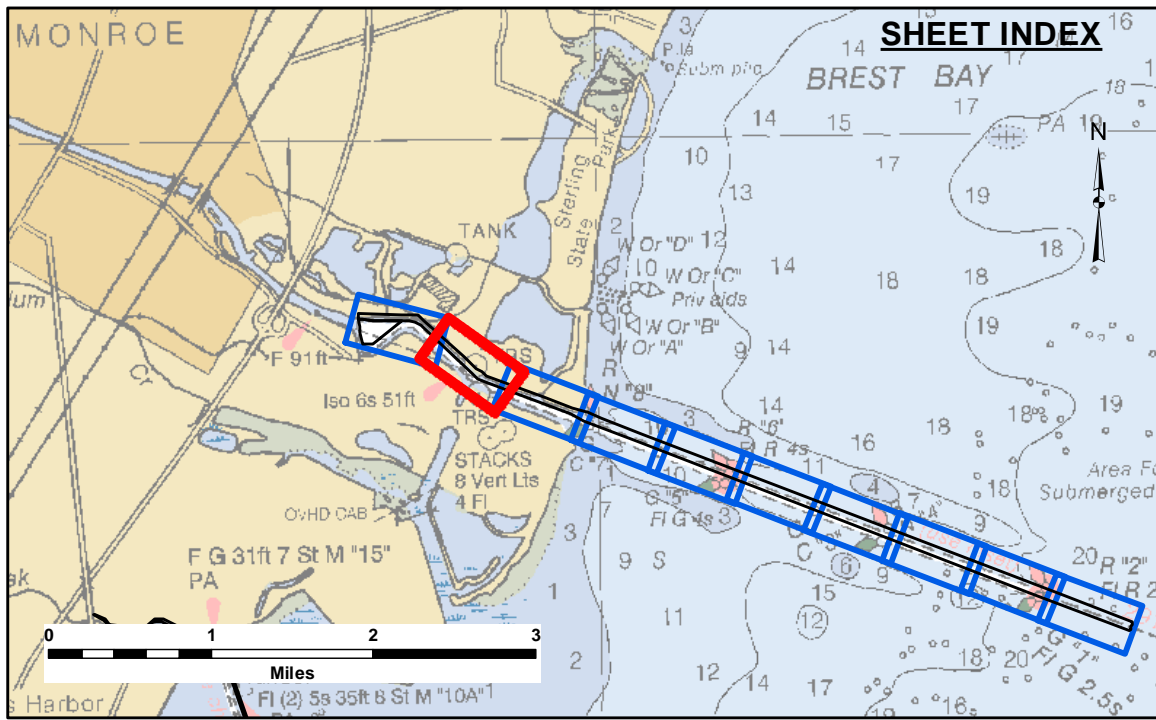
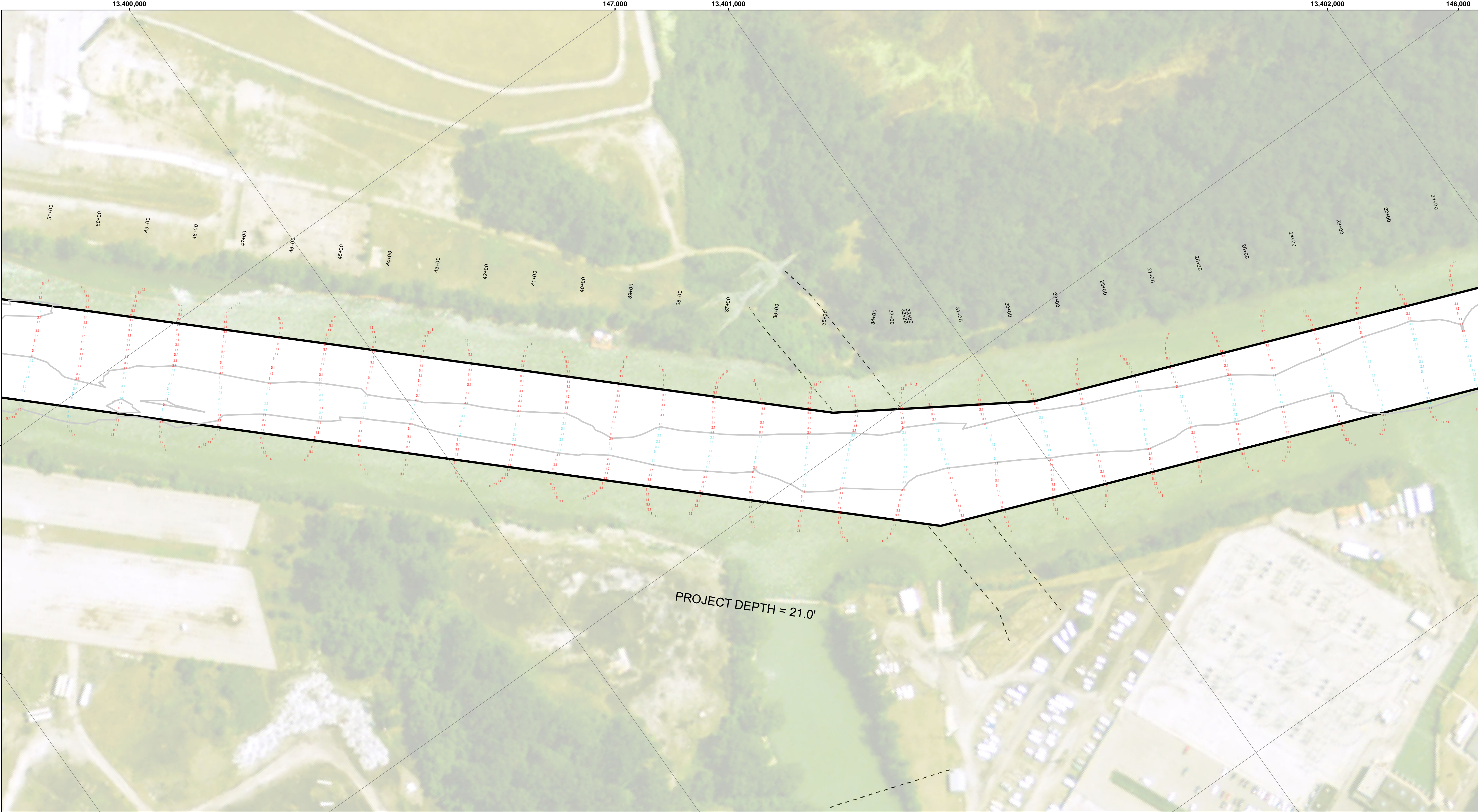
**ACCESS LIMITATIONS:** The United States Government furnishes these data and the recipient accepts and uses them with the express understanding that the data are not to be used for any other purpose, expressed, or implied concerning the accuracy, completeness, readability, usability or suitability for any particular purpose of the recipient. The data are not to be used for any purpose other than the intended purpose. These data are not to be used for any purpose other than the intended purpose. These data are not to be used for any purpose other than the intended purpose.

U.S. ARMY CORPS OF ENGINEERS DETROIT DISTRICT		
Submitted:	Surveyed By:	
Recommended:	Plotted By:	
Approved:	Chief, Survey Section	
	Chief, Technical Services	

**Monroe Harbor, MI**  
**Monroe Harbor**  
**MH\_01\_MNH\_20211019\_CS**  
**19 October 2021**

**Sheet Reference Number**  
**1 of 10**





**LEGEND**

- ..... Cable Submarine
- Cable Overhead
- Placement Area
- ┆ Beacon, General
- Contour Lines
- ▭ Channel Limits

**SOUNDING LEGEND**

- LESS THAN PROJECT DEPTH
- PROJECT DEPTH
- PROJECT DEPTH +1'
- PROJECT DEPTH +2'
- PROJECT DEPTH +3'
- PROJECT DEPTH +4'
- PROJECT DEPTH +5'

**1 inch = 100 feet**

Feet

0 100 200 300 400 500 600

**NOTES:**

THE INFORMATION DEPICTED ON THIS MAP REPRESENTS THE RESULTS OF SURVEYS MADE ON THE DATES INDICATED AND CAN ONLY BE CONSIDERED AS INDICATING THE GENERAL CONDITIONS AT THE TIME.

FOR MULTIBEAM SURVEYS: THE SOUNDINGS INDICATED HEREIN ARE GENERALIZED DEPTHS AND ARE NOT REPRESENTATIVE OF THE FULL DATASET. THE SOUNDINGS REPRESENT THE MINIMUM DEPTH FOUND WITHIN THE 10X10 FOOT AREA CENTERED ON THE TEXT, DERIVED FROM A 1X1 FOOT AVERAGE DATASET AT CELL CENTER. THIS MAP SHOULD NOT BE USED FOR CHANNEL CLEARANCE OR VOLUME COMPUTATIONS. MINIMUM DEPTH DATA IS PRODUCED FOR STRIKE/SOAL REMOVAL OPERATIONS AND NOTICE TO NAVIGATION INTERESTS.

HORIZONTAL GRID DATUM BASED ON MICHIGAN STATE PLANE COORDINATE SYSTEM, LAMBERT PROJECTION, SOUTH ZONE (2113), NORTH AMERICAN DATUM 1983, U.S. SURVEY FOOT.

ALL SOUNDINGS ARE REFERENCED TO INTERNATIONAL GREAT LAKES DATUM OF 1985 (IGLD85).

PROJECT DEPTHS FOR MONROE HARBOR ARE 21.0' AND THE TURNING BASIN PROJECT DEPTH IS 18.5'

TIDE VALUES ARE DERIVED FROM THE NATIONAL OCEANIC AND ATMOSPHERIC ADMINISTRATION (NOAA) WATER LEVEL STATIONS: FERMIL POWER PLANT, MI (#9063090)

POSITIONING: APPLANIX POS-MV4 W/ VRS/RTK OR MARINESTAR GNSS. MOTION COMPENSATION: APPLANIX POS-MV4. SONAR: R2SONIC 2024 (MULTIBEAM) OR ODOM CV-300 (SINGLEBEAM) SOFTWARE: HYPACK

2010 AERIAL PHOTOGRAPHY DATA SOURCE: USGS  
ALL COORDINATES ARE IN U.S. SURVEY FEET.

**US Army Corps of Engineers**  
District: CELRE

**DISCLAIMER:** The data represented by the results of data collection is for informational purposes only. The U.S. Army Corps of Engineers does not warrant the accuracy, completeness, or reliability of the data. The user is responsible for the results of any application of the data for other than its intended purpose.

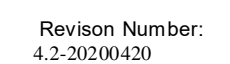
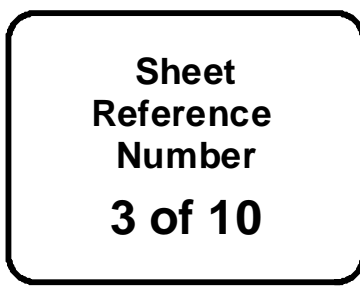
**ACCESS RESTRICTIONS:** The United States Government furnishes these data and the recipient accepts and uses them with the express understanding that they are not to be reproduced, stored, or transmitted in any form or by any means, electronic, mechanical, photocopying, recording, or by any information storage and retrieval system, without the prior written permission of the U.S. Army Corps of Engineers. The recipient may not transfer these data to others without also transferring this Disclaimer.

U.S. ARMY CORPS OF ENGINEERS DETROIT DISTRICT	Submitted:	Surveyed By:
	Recommended:	Plotted By:
	Approved:	Checked By:

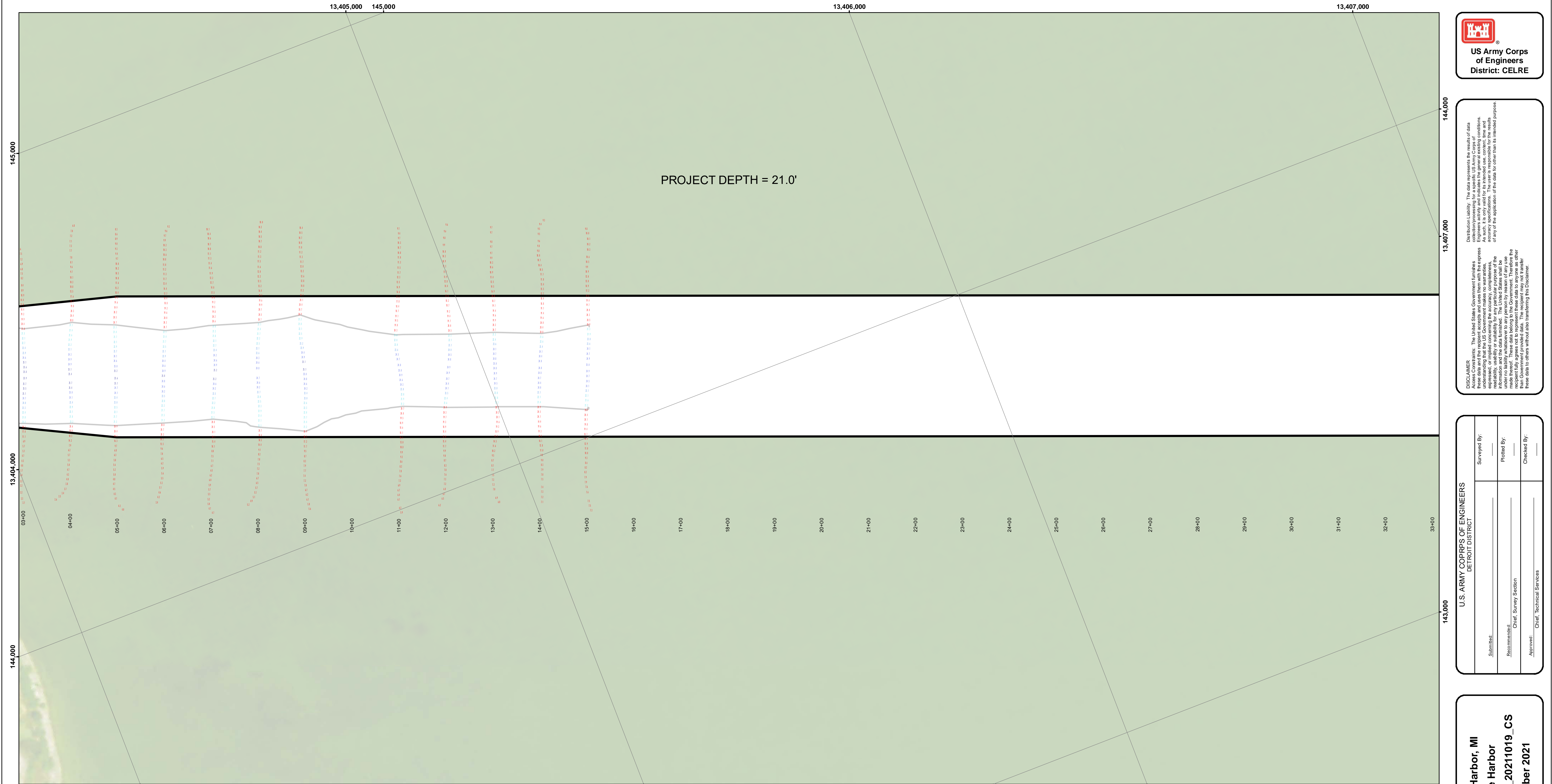
**Monroe Harbor, MI**  
**Monroe Harbor**  
**MH\_01\_MNH\_20211019\_CS**  
**19 October 2021**

**Sheet Reference Number**  
**2 of 10**









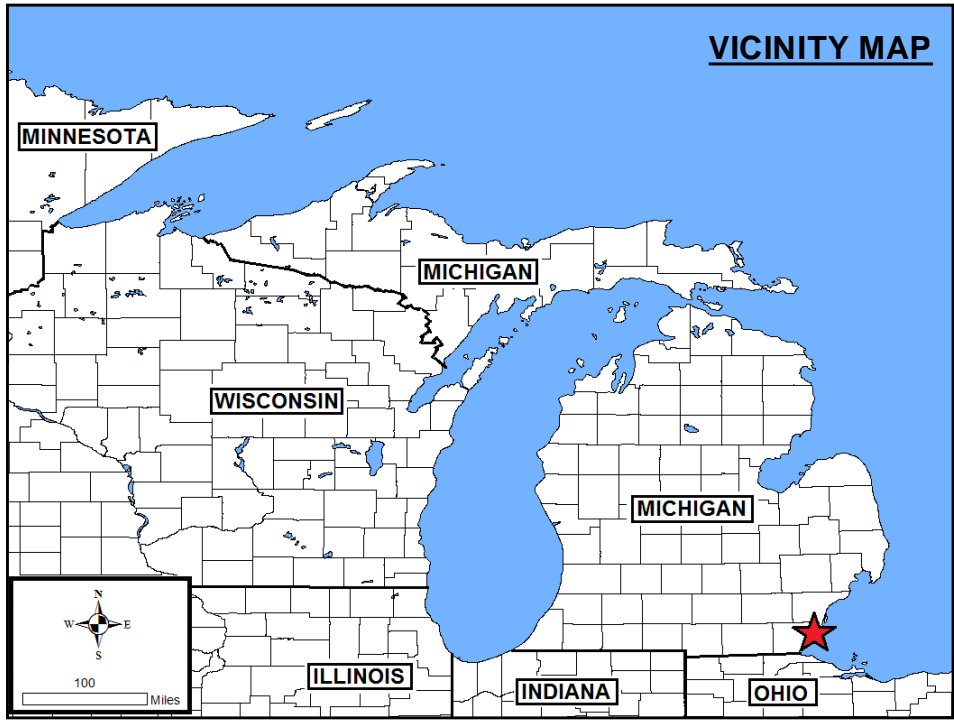
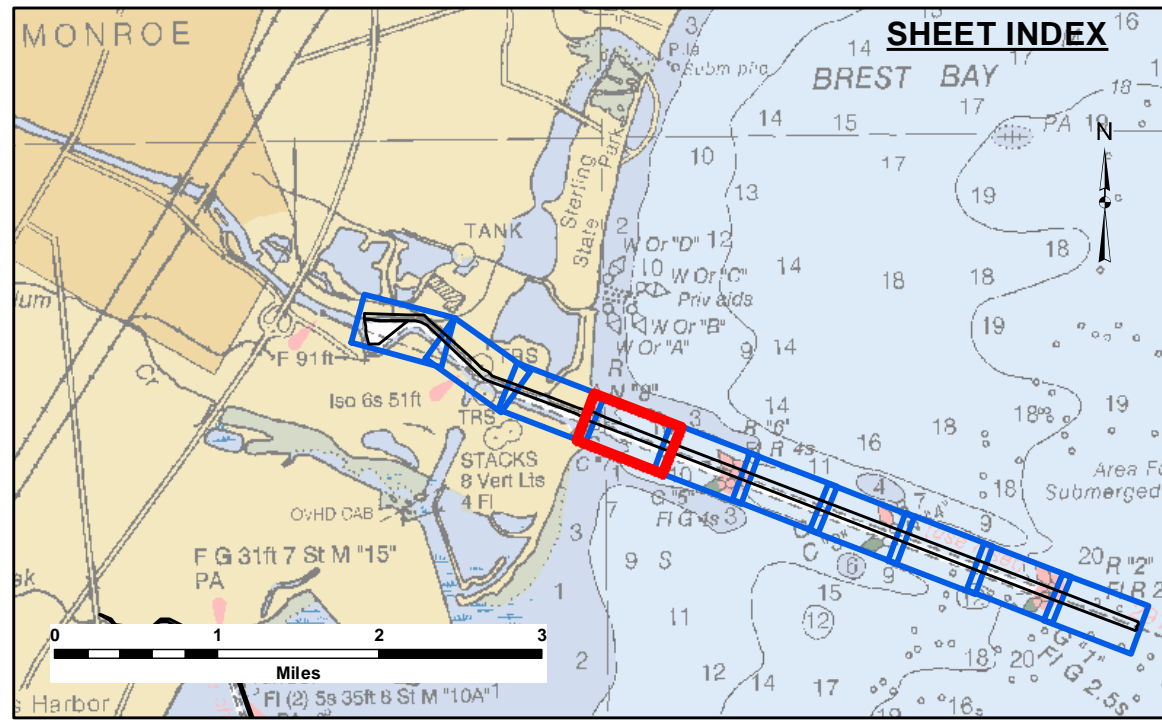
The data on this map represents the results of data collection conducted by the U.S. Army Corps of Engineers and is intended for general informational purposes only. The data is not intended for use in any legal proceeding or for any other purpose for which the data was not collected. The user is responsible for the results of any application of the data for other than its intended purpose.

U.S. ARMY CORPS OF ENGINEERS DETROIT DISTRICT		
Submitted:	Surveyed By:	
Recommended:	Plotted By:	
Approved:	Checked By:	

Monroe Harbor, MI  
Monroe Harbor  
MH\_01\_MNH\_20211019\_CS  
19 October 2021

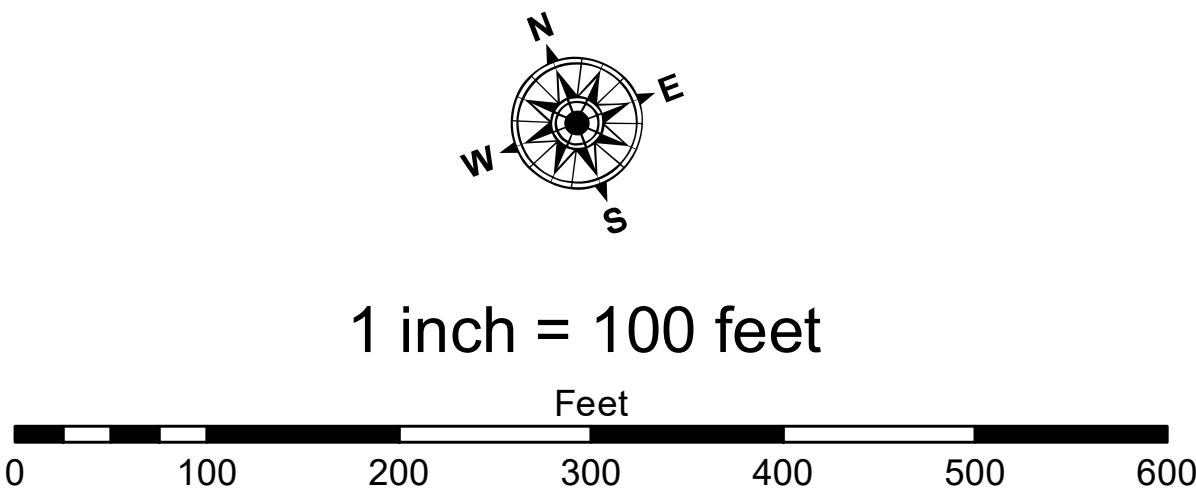
Sheet  
Reference  
Number  
4 of 10

Revision Number:  
4.2 202106130



- LEGEND**
- ..... Cable Submarine
  - Cable Overhead
  - Placement Area
  - Beacon, General
  - Contour Lines
  - Channel Limits

- SOUNDING LEGEND**
- LESS THAN PROJECT DEPTH
  - PROJECT DEPTH
  - PROJECT DEPTH +1'
  - PROJECT DEPTH +2'
  - PROJECT DEPTH +3'
  - PROJECT DEPTH +4'
  - PROJECT DEPTH +5'



**NOTES:**

THE INFORMATION DEPICTED ON THIS MAP REPRESENTS THE RESULTS OF SURVEYS MADE ON THE DATES INDICATED AND CAN ONLY BE CONSIDERED AS INDICATING THE GENERAL CONDITIONS AT THE TIME.

FOR MULTIBEAM SURVEYS: THE SOUNDINGS INDICATED HEREIN ARE GENERALIZED DEPTHS AND ARE NOT REPRESENTATIVE OF THE FULL DATASET. THE SOUNDINGS REPRESENT THE MINIMUM DEPTH FOUND WITHIN THE 10X10 FOOT AREA CENTERED ON THE TEXT, DERIVED FROM A 1X1 FOOT AVERAGE DATASET AT CELL CENTER. THIS MAP SHOULD NOT BE USED FOR CHANNEL CLEARANCE OR VOLUME COMPUTATIONS. MINIMUM DEPTH DATA IS PRODUCED FOR STRIKE/SOAL REMOVAL OPERATIONS AND NOTICE TO NAVIGATION INTERESTS.

HORIZONTAL GRID DATUM BASED ON MICHIGAN STATE PLANE COORDINATE SYSTEM, LAMBERT PROJECTION, SOUTH ZONE (2113), NORTH AMERICAN DATUM 1983, U.S. SURVEY FOOT.

ALL SOUNDINGS ARE REFERENCED TO INTERNATIONAL GREAT LAKES DATUM OF 1985 (IGLD85).

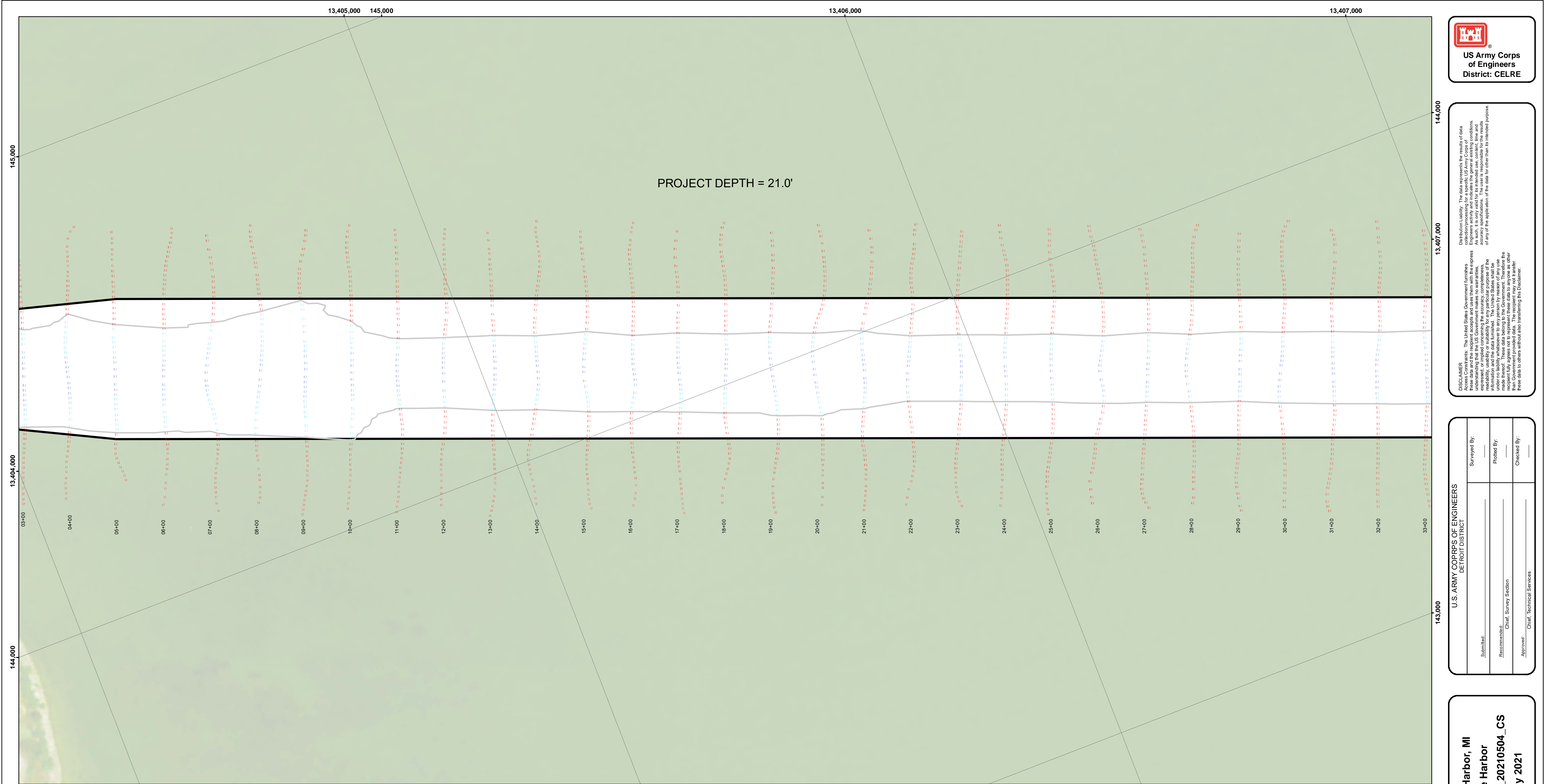
PROJECT DEPTHS FOR MONROE HARBOR ARE 21.0' AND THE TURNING BASIN PROJECT DEPTH IS 18.5'

TIDE VALUES ARE DERIVED FROM THE NATIONAL OCEANIC AND ATMOSPHERIC ADMINISTRATION (NOAA) WATER LEVEL STATIONS: FERMPOWER PLANT, MI (#9063090)

POSITIONING: APPLANIX POS-MV4 W/ VRS/RTK OR MARINESTAR GNSS. MOTION COMPENSATION: APPLANIX POS-MV4. SONAR: RSONIC 2024 (MULTIBEAM) OR ODOM CV-300 (SINGLEBEAM) SOFTWARE: HYPACK

2010 AERIAL PHOTOGRAPHY DATA SOURCE: USGS  
ALL COORDINATES ARE IN U.S. SURVEY FEET.





**SHEET INDEX**

**VICINITY MAP**

**LEGEND**

- ..... Cable Submarine
- - Cable Overhead
- Placement Area
- Beacon, General
- Contour Lines
- Channel Limits

**SOUNDING LEGEND**

- LESS THAN PROJECT DEPTH
- PROJECT DEPTH
- PROJECT DEPTH +1'
- PROJECT DEPTH +2'
- PROJECT DEPTH +3'
- PROJECT DEPTH +4'
- PROJECT DEPTH +5'

**NOTES:**

THE INFORMATION DEPICTED ON THIS MAP REPRESENTS THE RESULTS OF SURVEYS MADE ON THE DATES INDICATED AND CAN ONLY BE CONSIDERED AS INDICATING THE GENERAL CONDITIONS AT THE TIME.

FOR MULTIBEAM SURVEYS: THE SOUNDINGS INDICATED HEREIN ARE GENERALIZED DEPTHS AND ARE NOT REPRESENTATIVE OF THE FULL DATASET. THE SOUNDINGS REPRESENT THE MINIMUM DEPTH FOUND WITHIN THE 10X10 FOOT AREA CENTERED ON THE TEXT, DERIVED FROM A 1X1 FOOT AVERAGE DATASET AT CELL CENTER. THIS MAP SHOULD NOT BE USED FOR CHANNEL CLEARANCE OR VOLUME COMPUTATIONS. MINIMUM DEPTH DATA IS PRODUCED FOR STRIKE/SOAL REMOVAL OPERATIONS AND NOTICE TO NAVIGATION INTERESTS.

HORIZONTAL GRID DATUM BASED ON MICHIGAN STATE PLANE COORDINATE SYSTEM, LAMBERT PROJECTION, SOUTH ZONE (2113), NORTH AMERICAN DATUM 1983, U.S. SURVEY FOOT.

ALL SOUNDINGS ARE REFERENCED TO INTERNATIONAL GREAT LAKES DATUM OF 1985 (IGLD85).

PROJECT DEPTHS FOR MONROE HARBOR ARE 21.0' AND THE TURNING BASIN PROJECT DEPTH IS 18.5'

TIDE VALUES ARE DERIVED FROM THE NATIONAL OCEANIC AND ATMOSPHERIC ADMINISTRATION (NOAA) WATER LEVEL STATIONS: FERMI POWER PLANT, MI (#9063090)

POSITIONING: APPLANIX POS-MV4 W/ VRS/RTK OR MARINESTAR GNSS. MOTION COMPENSATION: APPLANIX POS-MV4. SONAR: RSONIC 2024 (MULTIBEAM) OR ODOM CV-300 (SINGLEBEAM) SOFTWARE: HYPACK

2010 AERIAL PHOTOGRAPHY DATA SOURCE: USGS  
ALL COORDINATES ARE IN U.S. SURVEY FEET.

**1 inch = 100 feet**

**U.S. ARMY CORPS OF ENGINEERS**  
DETROIT DISTRICT

**Monroe Harbor, MI**  
**Monroe Harbor**  
**MH\_01\_MNH\_20210504\_CS**  
**04 May 2021**

**Sheet Reference Number**  
**4 of 10**

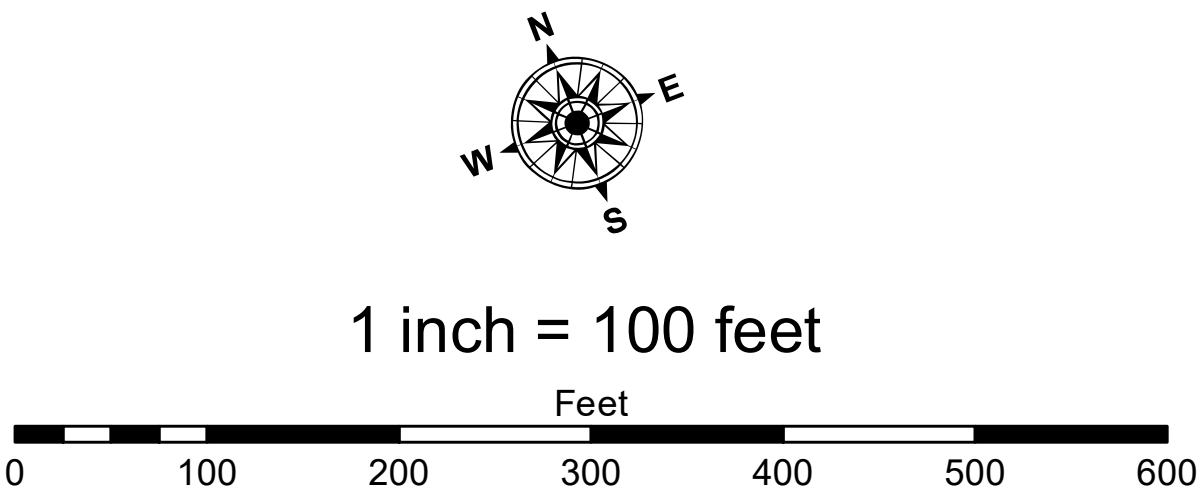
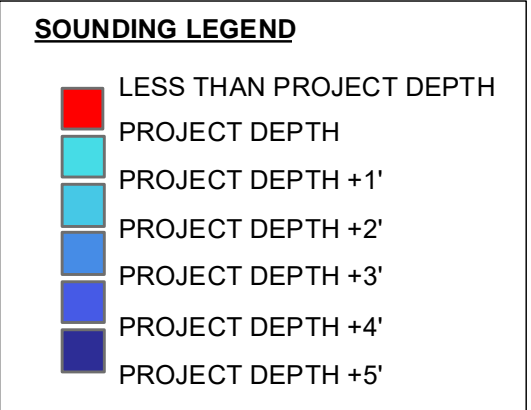
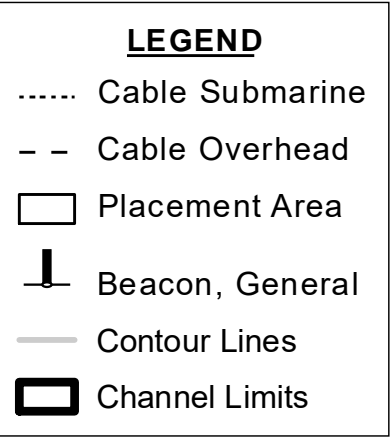
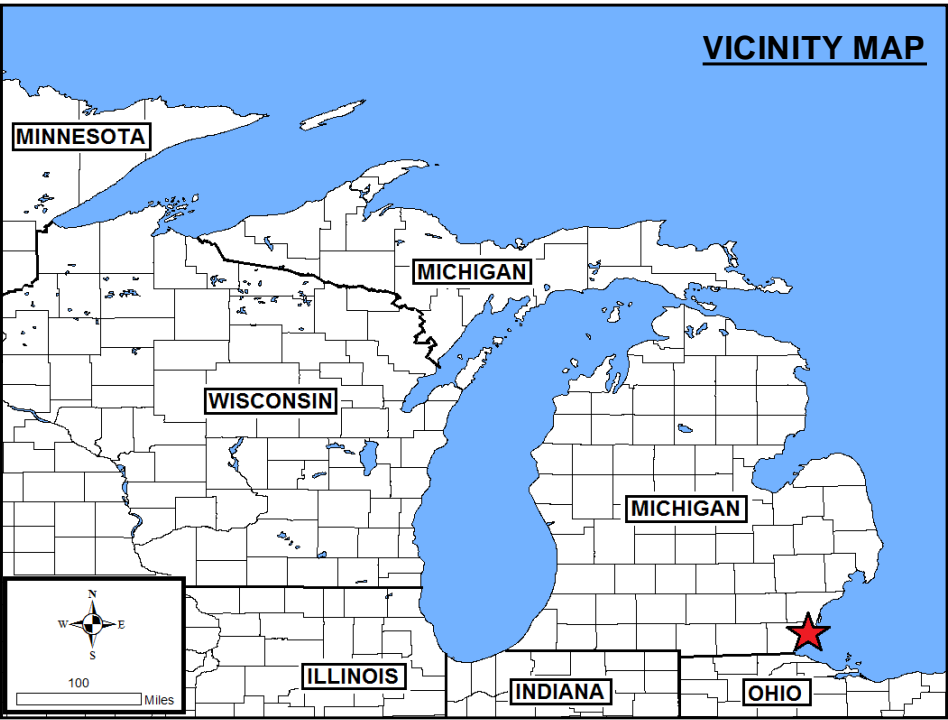
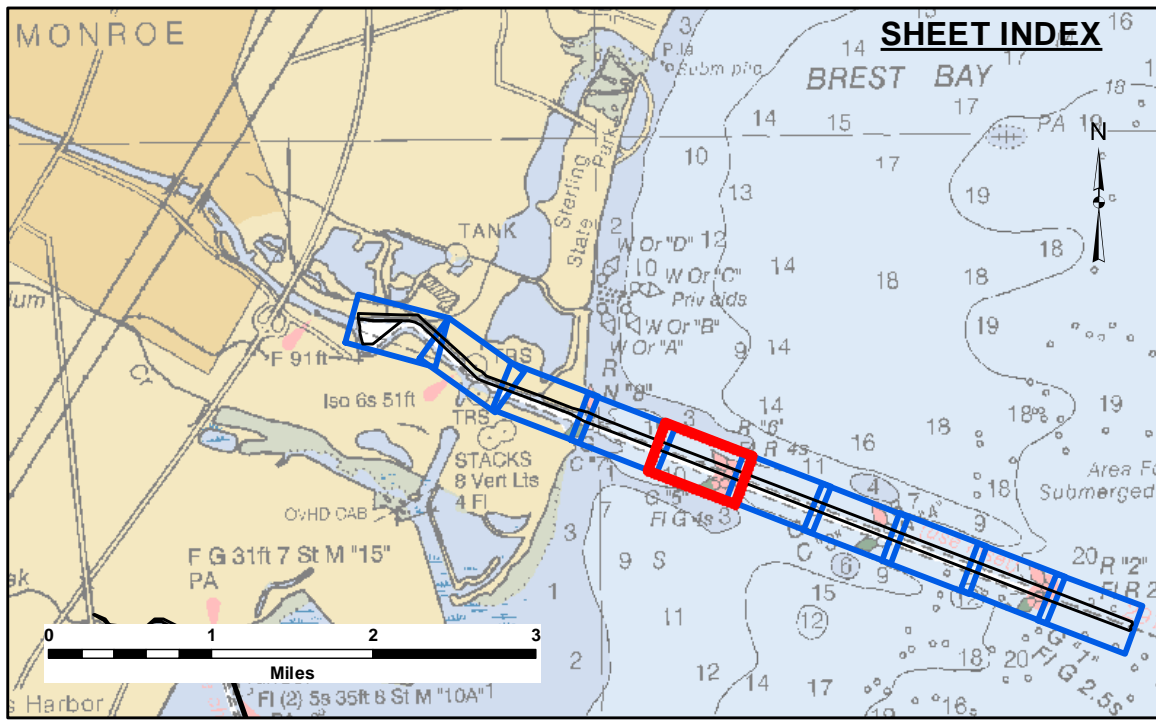
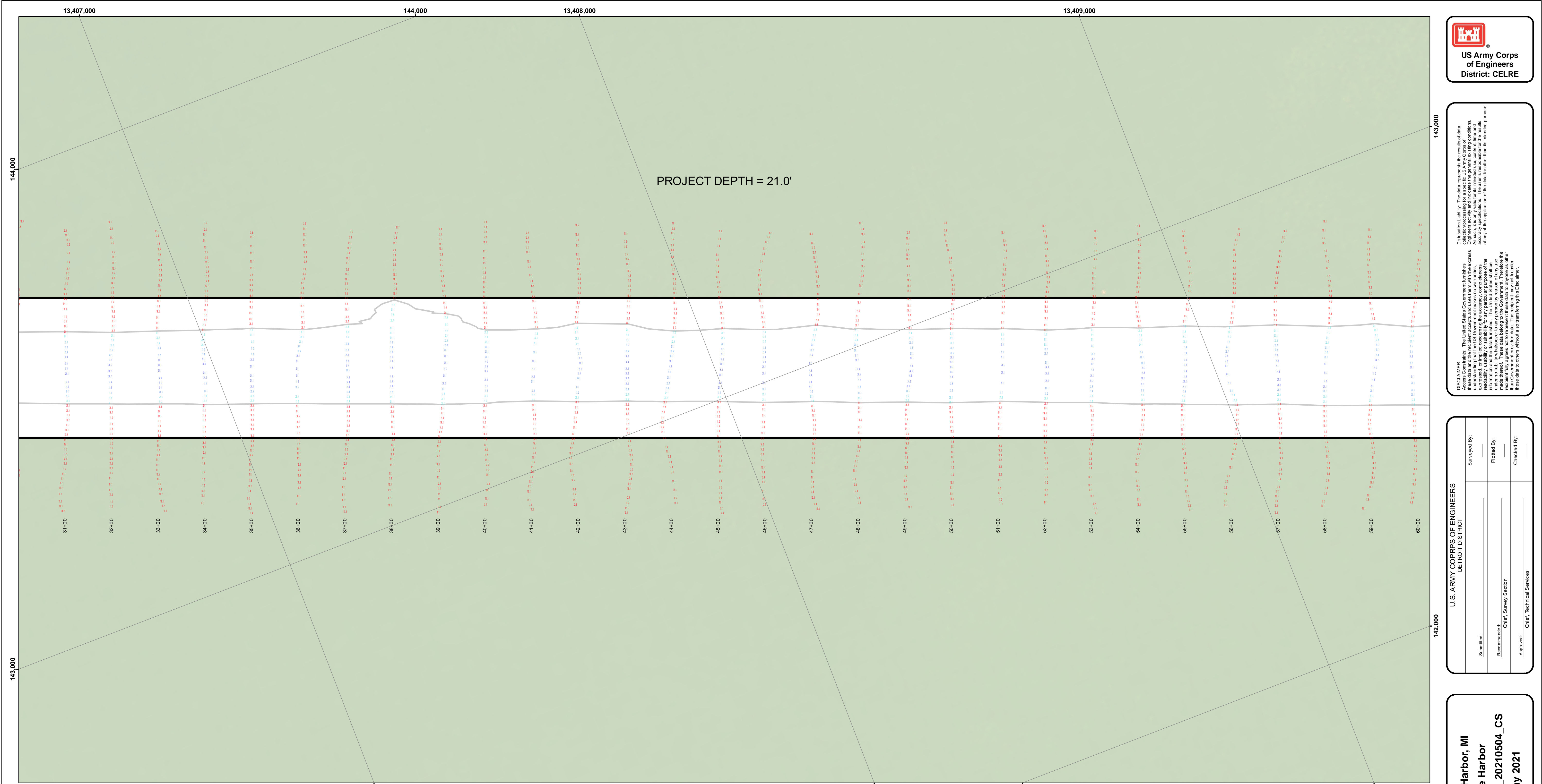
Revision Number:  
4.2 202106130

The data on this map represents the results of data collection and processing for a specific project. The Corps of Engineers actively and continuously monitors the general existing conditions of the project area and updates the data as needed to ensure accuracy. The user is responsible for the results of any of the application of the data for other than its intended purpose.

DISCLAIMER: The United States Government furnishes these data and the recipient accepts and uses them with the express understanding that the Government makes no warranty, expressed, implied, or otherwise, regarding the accuracy, completeness, readability, usability, or suitability for any particular purpose of the information. The recipient agrees to hold the Government harmless under no liability whatsoever to any person by reason of any use made thereof. These data belong to the Government. Hereby the recipient agrees to transfer all rights, title, and interest in and to these data to others without also transferring this Disclaimer.

Submitted:	Surveyed By:
	Plotted By:
	Recommended:
	Checked By:





**NOTES:**

THE INFORMATION DEPICTED ON THIS MAP REPRESENTS THE RESULTS OF SURVEYS MADE ON THE DATES INDICATED AND CAN ONLY BE CONSIDERED AS INDICATING THE GENERAL CONDITIONS AT THE TIME.

FOR MULTIBEAM SURVEYS: THE SOUNDINGS INDICATED HEREIN ARE GENERALIZED DEPTHS AND ARE NOT REPRESENTATIVE OF THE FULL DATASET. THE SOUNDINGS REPRESENT THE MINIMUM DEPTH FOUND WITHIN THE 10X10 FOOT AREA CENTERED ON THE TEXT, DERIVED FROM A 1X1 FOOT AVERAGE DATASET AT CELL CENTER. THIS MAP SHOULD NOT BE USED FOR CHANNEL CLEARANCE OR VOLUME COMPUTATIONS. MINIMUM DEPTH DATA IS PRODUCED FOR STRIKE/SOAL REMOVAL OPERATIONS AND NOTICE TO NAVIGATION INTERESTS.

HORIZONTAL GRID DATUM BASED ON MICHIGAN STATE PLANE COORDINATE SYSTEM, LAMBERT PROJECTION, SOUTH ZONE (2113), NORTH AMERICAN DATUM 1983, U.S. SURVEY FOOT.

ALL SOUNDINGS ARE REFERENCED TO INTERNATIONAL GREAT LAKES DATUM OF 1985 (IGLD85).

PROJECT DEPTHS FOR MONROE HARBOR ARE 21.0' AND THE TURNING BASIN PROJECT DEPTH IS 18.5'

TIDE VALUES ARE DERIVED FROM THE NATIONAL OCEANIC AND ATMOSPHERIC ADMINISTRATION (NOAA) WATER LEVEL STATIONS: FERMI POWER PLANT, MI (#9063090)

POSITIONING: APPLANIX POS-MV4 W/ VRS/RTK OR MARINESTAR GNSS. MOTION COMPENSATION: APPLANIX POS-MV4. SONAR: RSONIC 2024 (MULTIBEAM) OR ODOM CV-300 (SINGLEBEAM) SOFTWARE: HYPACK

2010 AERIAL PHOTOGRAPHY DATA SOURCE: USGS  
ALL COORDINATES ARE IN U.S. SURVEY FEET.

U.S. ARMY CORPS OF ENGINEERS  
DETROIT DISTRICT

Submitted:	Surveyed By:
Recommended:	Plotted By:
Approved:	Checked By:

Chief, Survey Section  
Chief, Technical Services

Monroe Harbor, MI  
Monroe Harbor  
MH\_01\_MNH\_20210504\_CS  
04 May 2021

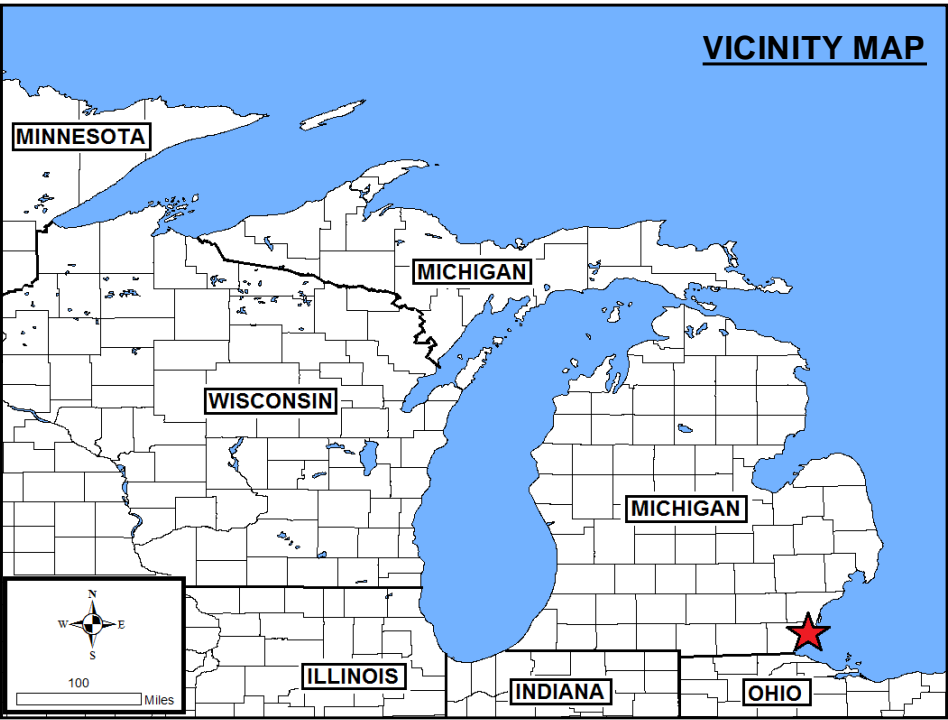
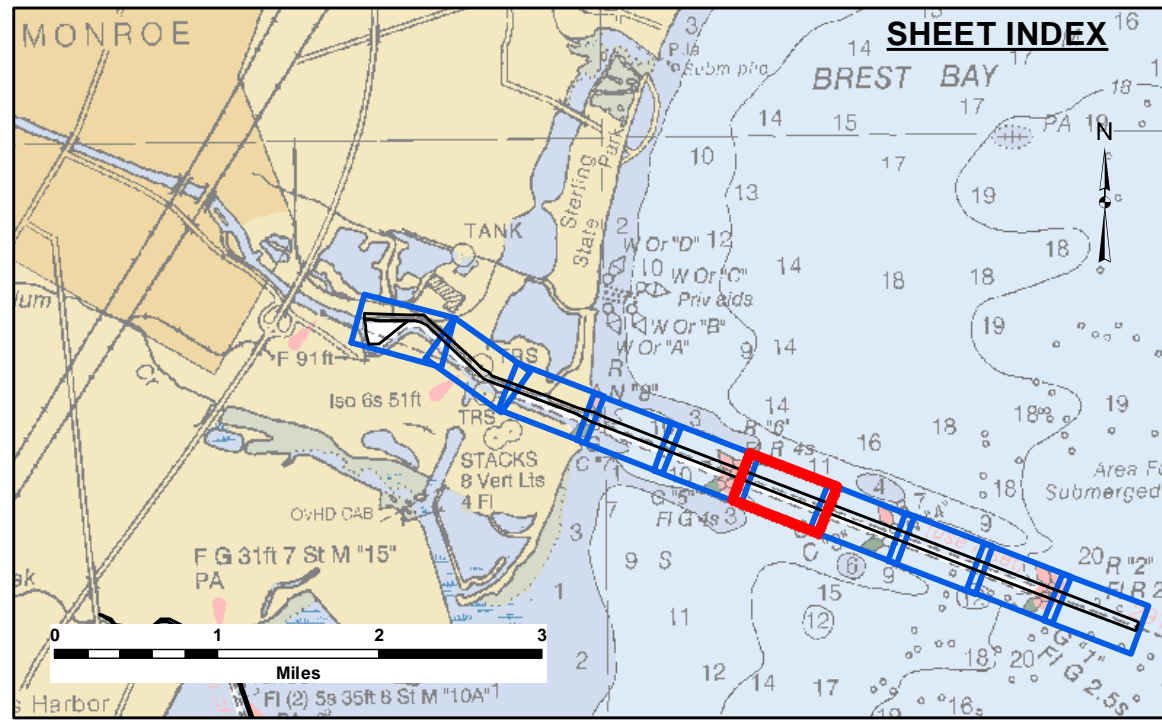
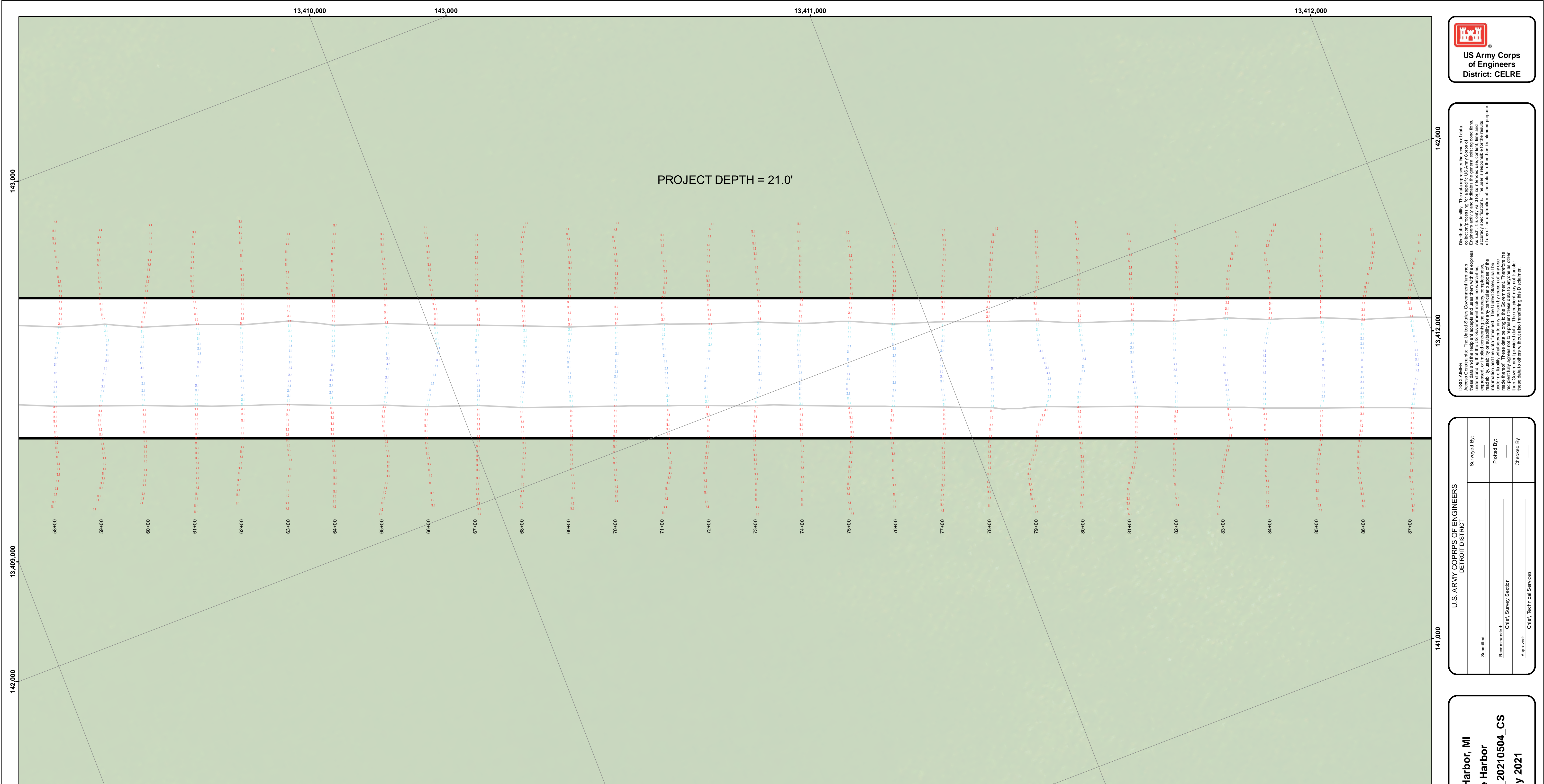
Sheet  
Reference  
Number  
5 of 10



DISCLAIMER: The data represented by the results of data collection is provided for informational purposes only. The data is not intended for use in any other manner. The user is responsible for the results of any of the application of the data for other than its intended purpose.

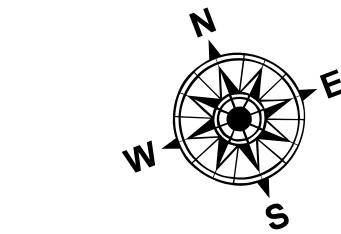
DISCLAIMER: The United States Government furnishes these data and the recipient accepts and uses them with the express understanding that the data are not intended for use in any other manner. The data are not intended for use in any other manner. The user is responsible for the results of any of the application of the data for other than its intended purpose.



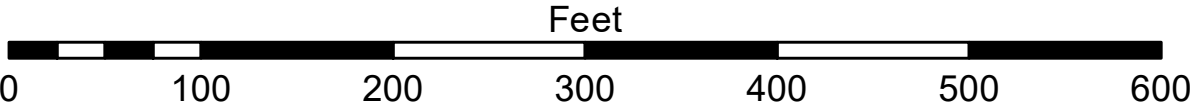


- LEGEND**
- ..... Cable Submarine
  - - Cable Overhead
  - Placement Area
  - Beacon, General
  - Contour Lines
  - Channel Limits

- SOUNDING LEGEND**
- LESS THAN PROJECT DEPTH
  - PROJECT DEPTH
  - PROJECT DEPTH +1'
  - PROJECT DEPTH +2'
  - PROJECT DEPTH +3'
  - PROJECT DEPTH +4'
  - PROJECT DEPTH +5'



1 inch = 100 feet



**NOTES:**

THE INFORMATION DEPICTED ON THIS MAP REPRESENTS THE RESULTS OF SURVEYS MADE ON THE DATES INDICATED AND CAN ONLY BE CONSIDERED AS INDICATING THE GENERAL CONDITIONS AT THE TIME.

FOR MULTIBEAM SURVEYS: THE SOUNDINGS INDICATED HEREIN ARE GENERALIZED DEPTHS AND ARE NOT REPRESENTATIVE OF THE FULL DATASET. THE SOUNDINGS REPRESENT THE MINIMUM DEPTH FOUND WITHIN THE 10X10 FOOT AREA CENTERED ON THE TEXT, DERIVED FROM A 1X1 FOOT AVERAGE DATASET AT CELL CENTER. THIS MAP SHOULD NOT BE USED FOR CHANNEL CLEARANCE OR VOLUME COMPUTATIONS. MINIMUM DEPTH DATA IS PRODUCED FOR STRIKE/SOAL REMOVAL OPERATIONS AND NOTICE TO NAVIGATION INTERESTS.

HORIZONTAL GRID DATUM BASED ON MICHIGAN STATE PLANE COORDINATE SYSTEM, LAMBERT PROJECTION, SOUTH ZONE (2113), NORTH AMERICAN DATUM 1983, U.S. SURVEY FOOT.

ALL SOUNDINGS ARE REFERENCED TO INTERNATIONAL GREAT LAKES DATUM OF 1985 (IGLD85).

PROJECT DEPTHS FOR MONROE HARBOR ARE 21.0' AND THE TURNING BASIN PROJECT DEPTH IS 18.5'

TIDE VALUES ARE DERIVED FROM THE NATIONAL OCEANIC AND ATMOSPHERIC ADMINISTRATION (NOAA) WATER LEVEL STATIONS: FERRIS POWER PLANT, MI (#9063090)

POSITIONING: APPLANIX POS-MV4 W/ VRS/RTK OR MARINESTAR GNSS. MOTION COMPENSATION: APPLANIX POS-MV4. SONAR: RSONIC 2024 (MULTIBEAM) OR ODOM CV-300 (SINGLEBEAM) SOFTWARE: HYPACK

2010 AERIAL PHOTOGRAPHY DATA SOURCE: USGS  
ALL COORDINATES ARE IN U.S. SURVEY FEET.



**DISCLAIMER:** The data represented by the results of data collection is provided for informational purposes only. The data is not intended for use in any other manner. The user is responsible for the results of any application of the data for other than its intended purpose.

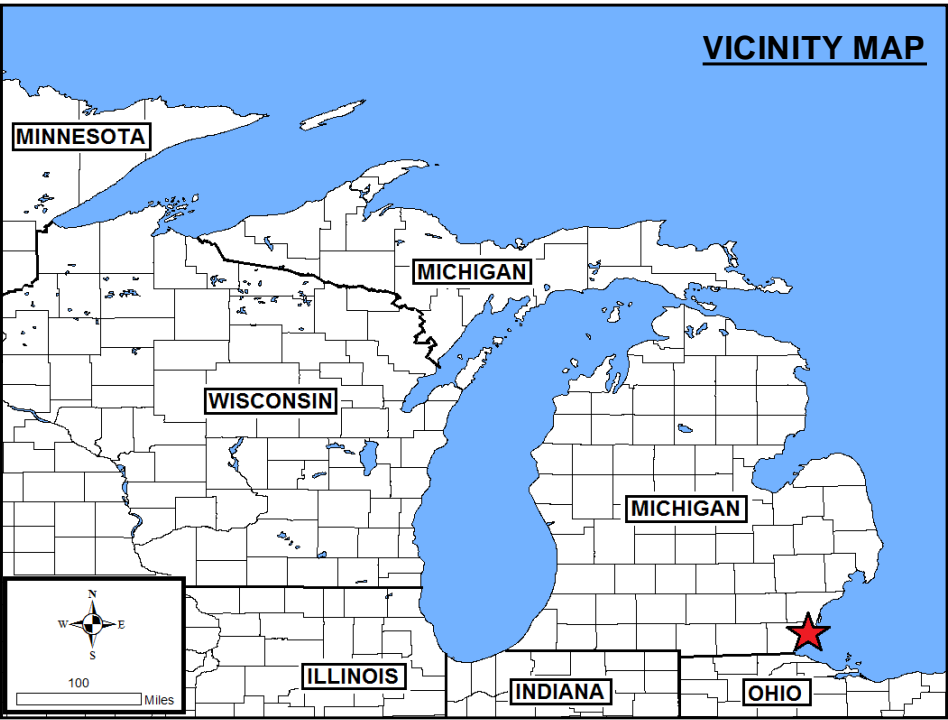
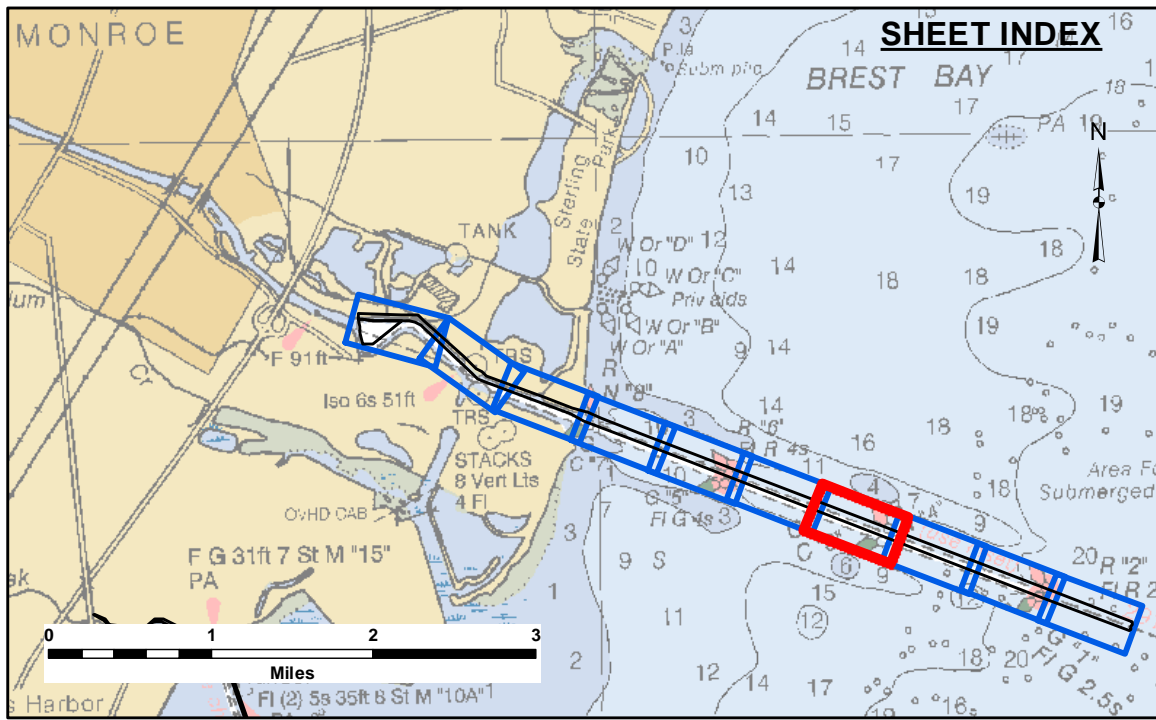
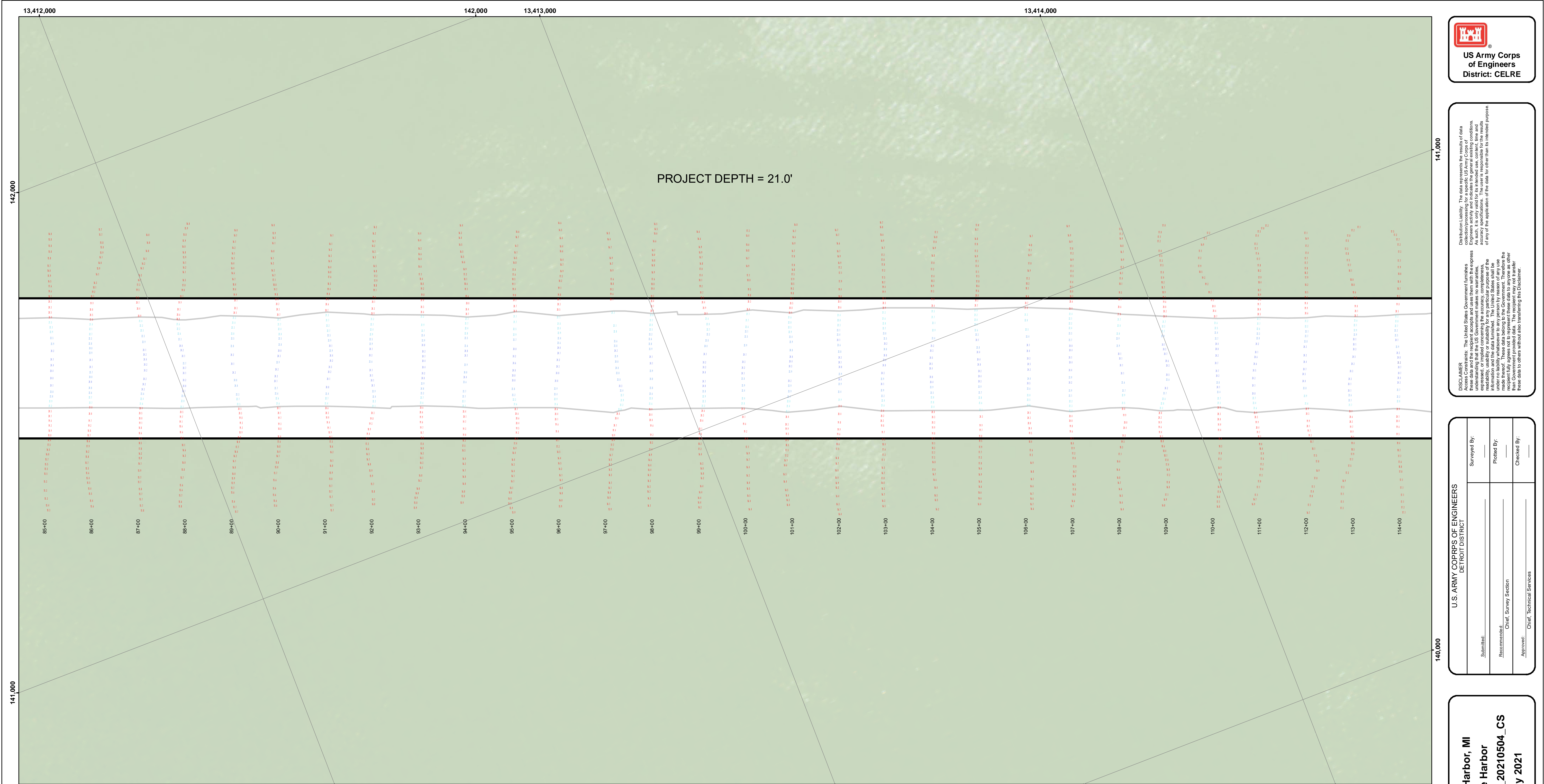
**DISCLAIMER:** The United States Government furnishes these data and the recipient accepts and uses them with the express understanding that the data are not intended for use in any other manner, expressed, or implied concerning the accuracy, completeness, readability, usability or suitability for any particular purpose of the recipient. These data are provided for informational purposes only and are not intended to be used for any other purpose. The recipient may not transfer these data to others without transferring this disclaimer.

Submitted:	Surveyed By:
	Plotted By:
	Checked By:
Recommended:	Chief, Survey Section
Approved:	Chief, Technical Services

**Monroe Harbor, MI**  
**Monroe Harbor**  
**MH\_01\_MNH\_20210504\_CS**  
**04 May 2021**

**Sheet Reference Number**  
**6 of 10**



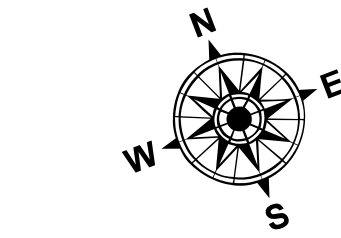


**LEGEND**

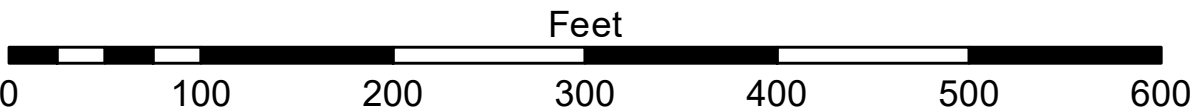
- ..... Cable Submarine
- Cable Overhead
- Placement Area
- ⊥ Beacon, General
- Contour Lines
- ▭ Channel Limits

**SOUNDING LEGEND**

- LESS THAN PROJECT DEPTH
- PROJECT DEPTH
- PROJECT DEPTH +1'
- PROJECT DEPTH +2'
- PROJECT DEPTH +3'
- PROJECT DEPTH +4'
- PROJECT DEPTH +5'



1 inch = 100 feet



**NOTES:**

THE INFORMATION DEPICTED ON THIS MAP REPRESENTS THE RESULTS OF SURVEYS MADE ON THE DATES INDICATED AND CAN ONLY BE CONSIDERED AS INDICATING THE GENERAL CONDITIONS AT THE TIME.

FOR MULTIBEAM SURVEYS: THE SOUNDINGS INDICATED HEREIN ARE GENERALIZED DEPTHS AND ARE NOT REPRESENTATIVE OF THE FULL DATASET. THE SOUNDINGS REPRESENT THE MINIMUM DEPTH FOUND WITHIN THE 10X10 FOOT AREA CENTERED ON THE TEXT, DERIVED FROM A 1X1 FOOT AVERAGE DATASET AT CELL CENTER. THIS MAP SHOULD NOT BE USED FOR CHANNEL CLEARANCE OR VOLUME COMPUTATIONS. MINIMUM DEPTH DATA IS PRODUCED FOR STRIKE/SOAL REMOVAL OPERATIONS AND NOTICE TO NAVIGATION INTERESTS.

HORIZONTAL GRID DATUM BASED ON MICHIGAN STATE PLANE COORDINATE SYSTEM, LAMBERT PROJECTION, SOUTH ZONE (2113), NORTH AMERICAN DATUM 1983, U.S. SURVEY FOOT.

ALL SOUNDINGS ARE REFERENCED TO INTERNATIONAL GREAT LAKES DATUM OF 1985 (IGLD85).

PROJECT DEPTHS FOR MONROE HARBOR ARE 21.0' AND THE TURNING BASIN PROJECT DEPTH IS 18.5'

TIDE VALUES ARE DERIVED FROM THE NATIONAL OCEANIC AND ATMOSPHERIC ADMINISTRATION (NOAA) WATER LEVEL STATIONS: FERMI POWER PLANT, MI (#9063090)

POSITIONING: APPLANIX POS-MV4 W/ VRS/RTK OR MARINESTAR GNSS. MOTION COMPENSATION: APPLANIX POS-MV4. SONAR: R2SONIC 2024 (MULTIBEAM) OR ODOM CV-300 (SINGLEBEAM) SOFTWARE: HYPACK

2010 AERIAL PHOTOGRAPHY DATA SOURCE: USGS  
ALL COORDINATES ARE IN U.S. SURVEY FEET.

**US Army Corps of Engineers**  
District: CELRE

**DISCLAIMER:** The data represented by the results of data collection is provided for informational purposes only. The Corps of Engineers actively and continuously monitors the general existing conditions of the project area. The user is responsible for the results of any application of the data for other than its intended purpose.

**DISCLAIMER:** The United States Government furnishes these data and the recipient accepts and uses them with the express understanding that the data are not to be used for any purpose other than that for which they were provided. The data are not to be used, expressed, or implied concerning the accuracy, completeness, readability, usability or suitability for any particular purpose of the recipient. The data are not to be used for any purpose other than that for which they were provided. The data are not to be used, expressed, or implied concerning the accuracy, completeness, readability, usability or suitability for any particular purpose of the recipient. These data belong to the Government. The recipient may not transfer these data to others without transferring this Disclaimer.

**U.S. ARMY CORPS OF ENGINEERS**  
DETROIT DISTRICT

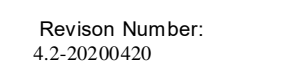
Submitted:	Surveyed By:
Recommended:	Plotted By:
Approved:	Checked By:

**Monroe Harbor, MI**  
**Monroe Harbor**  
**MH\_01\_MNH\_20210504\_CS**  
**04 May 2021**

**Sheet Reference Number**  
**7 of 10**

Revision Number:  
4.2-2021061420





**NOTES:** THE INFORMATION DEPICTED ON THIS MAP REPRESENTS THE RESULTS OF SURVEYS MADE ON THE DATES INDICATED AND CAN ONLY BE CONSIDERED AS INDICATING THE GENERAL CONDITIONS AT THE TIME.

FOR MULTIBEAM SURVEYS: THE SOUNDINGS INDICATED HEREIN ARE GENERALIZED DEPTHS AND ARE NOT REPRESENTATIVE OF THE FULL DATASET. THE SOUNDINGS REPRESENT THE MINIMUM DEPTH FOUND WITHIN THE 10X10 FOOT AREA CENTERED ON THE TIDE. DERIVED FROM A 1X1 FOOT AVERAGE DATASET AT CELL CENTER. THIS MAP SHOULD NOT BE USED FOR CHANNEL CLEARANCE OR VOLUME COMPUTATIONS. MINIMUM DEPTH DATA IS PRODUCED FOR STRIKE/SLOPE REMOVAL OPERATIONS AND NOTICE TO NAVIGATION INTERESTS.

HORIZONTAL GRID DATUM BASED ON MICHIGAN STATE PLANE COORDINATE SYSTEM, LAMBERT PROJECTION, SOUTH ZONE (213), NORTH AMERICAN DATUM 1983, U.S. SURVEY FOOT.

ALL SOUNDINGS ARE REFERENCED TO INTERNATIONAL GREAT LAKES DATUM OF 1985 (IGLD85).

PROJECT DEPTHS FOR MONROE HARBOR ARE 21.0' AND THE TURNING BASIN PROJECT DEPTH IS 18.5'

TIDE VALUES ARE DERIVED FROM THE NATIONAL OCEANIC AND ATMOSPHERIC ADMINISTRATION (NOAA) WATER LEVEL STATIONS:  
FERMI POWER PLANT, MI (#9630309)

POSITIONING: APPLANIX POS-MV4 W/ VRS/RTK OR MARINESTAR GNSS.  
MOTION COMPENSATION: APPLANIX POS-MV4  
SONAR: R2SONIC 2024 (MULTIBEAM) OR ODOM CV-300 (SINGLEBEAM)  
SOFTWARE: HYPAACK

2010 AERIAL PHOTOGRAPHY DATA SOURCE: USGS  
COORDINATES ARE IN U.S. SURVEY FEET



