

LEGEND

- Cable Submarine
- - - Cable Overhead
- Placement Area
- ⌋ Beacon, General
- Contour Lines
- ▭ Channel Limits
- RELOCATED CHANNEL LIMITS

SOUNDING LEGEND

- LESS THAN PROJECT DEPTH
- PROJECT DEPTH
- PROJECT DEPTH +1'
- PROJECT DEPTH +2'
- PROJECT DEPTH +3'
- PROJECT DEPTH +4'
- PROJECT DEPTH +5'

Scale and Orientation

1 inch = 100 feet

Feet

0 100 200 300 400 500 600

North Arrow

NOTES:

1. THE SOUNDINGS INDICATED HEREIN ARE GENERALIZED DEPTHS AND ARE NOT REPRESENTATIVE OF THE FULL DATASET. THE SOUNDINGS REPRESENT THE MINIMUM DEPTH FOUND WITHIN THE 10X10 FOOT AREA CENTERED ON THE TEXT, DERIVED FROM A 1X1 FOOT AVERAGE DATASET AT CELL CENTER. THIS MAP SHOULD NOT BE USED FOR CHANNEL CLEARANCE OR VOLUME COMPUTATIONS. MINIMUM DEPTH DATA IS PRODUCED FOR STRIKE/SHOAL REMOVAL OPERATIONS AND NOTICE TO NAVIGATION INTERESTS.

2. ELEVATIONS AND SOUNDING DEPTHS ARE REFERRED TO INTERNATIONAL GREAT LAKES DATUM 1985 (IGLD 85). ALL SOUNDINGS ARE IN FEET AND ARE REFERENCED TO LOW WATER DATUM ELEVATION, 577.5 FEET ABOVE MEAN WATER LEVEL AT RIMOUSKI, QUEBEC (INTERNATIONAL GREAT LAKES DATUM 1985). NOAA GAUGE LOCATED AT MENOMINEE, MI WAS USED TO DETERMINE THE WATER LEVEL DEPTHS ARE MEASURED USING AN R2SONIC 2024 MULTIBEAM SONAR.

3. THE INFORMATION DEPICTED ON THIS MAP REPRESENTS THE RESULTS OF SURVEYS MADE ON DAY INDICATED AND CAN ONLY BE CONSIDERED AS INDICATING THE GENERAL CONDITIONS PRESENT AT THE TIME.

4. HORIZONTAL POSITIONING IS DETERMINED USING REAL TIME KINEMATIC GLOBAL POSITIONING SYSTEM (RTK). CORRECTIONS ARE PROVIDED BY THE MICHIGAN CONTINUOUSLY OPERATING REFERENCE STATIONS (CORS). THE GPS RECEIVER IS MANUFACTURED BY APPLANIX MARINE POS/MV VER 4.0.

5. GRID COORDINATES ARE BASED ON THE WISCONSIN STATE PLANE COORDINATE SYSTEM, LAMBERT PROJECTION, CENTRAL ZONE 4802, NORTH AMERICAN DATUM 1983 (NAD83), US SURVEY FOOT.

6. PROJECT DEPTH FOR THIS PROJECT ARE 21.0', 19.0' & 12.0'.

7. NOTE NEW CHANNEL LIMITS STA 175+00 195+00 HAVE BEEN REALIGNED AND CONSTRUCTED IN ACCORDANCE WITH USACE SECTION 408 AUTHORITY, PROJECT #408-LRE-2020-0001. OFFICAL CHANNEL RELOCATION HAS BEEN ACCEPTD BY USACE.

US Army Corps of Engineers
District: CELRE

DISCLAIMER: The data represents the results of data collection and processing for a specific US Army Corps of Engineers activity and indicates the general existing conditions. The data is not intended to be used for any other purpose, accuracy, specifications. The user is responsible for the results of any of the application of the data for other than its intended purpose.

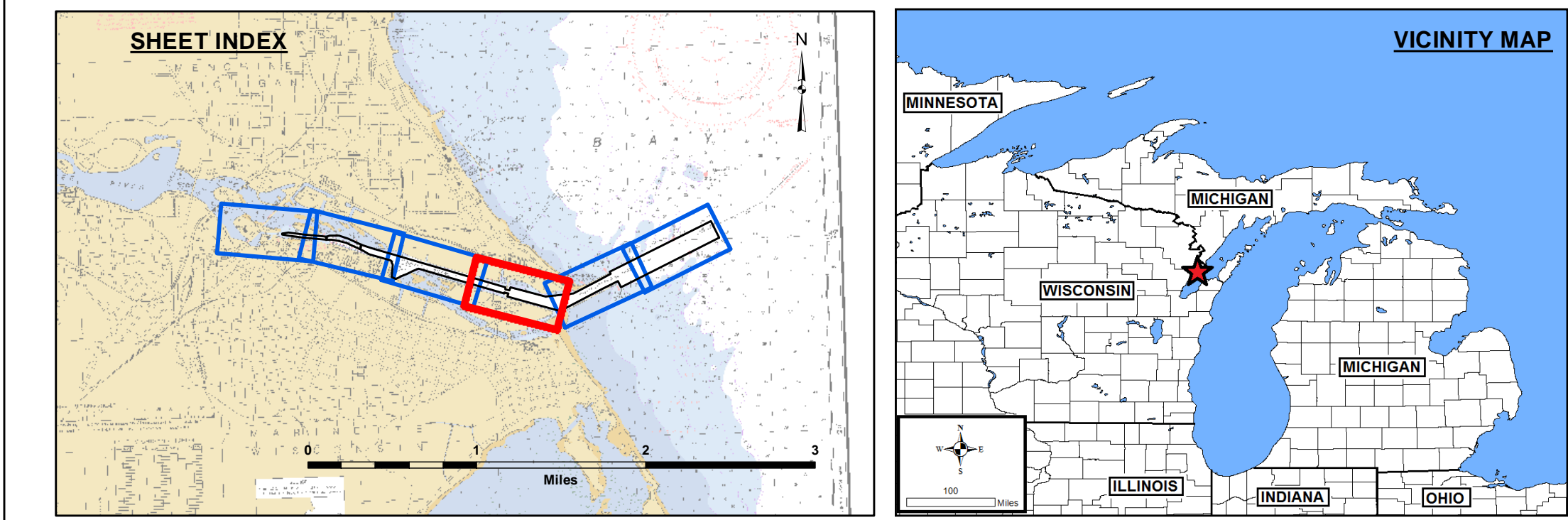
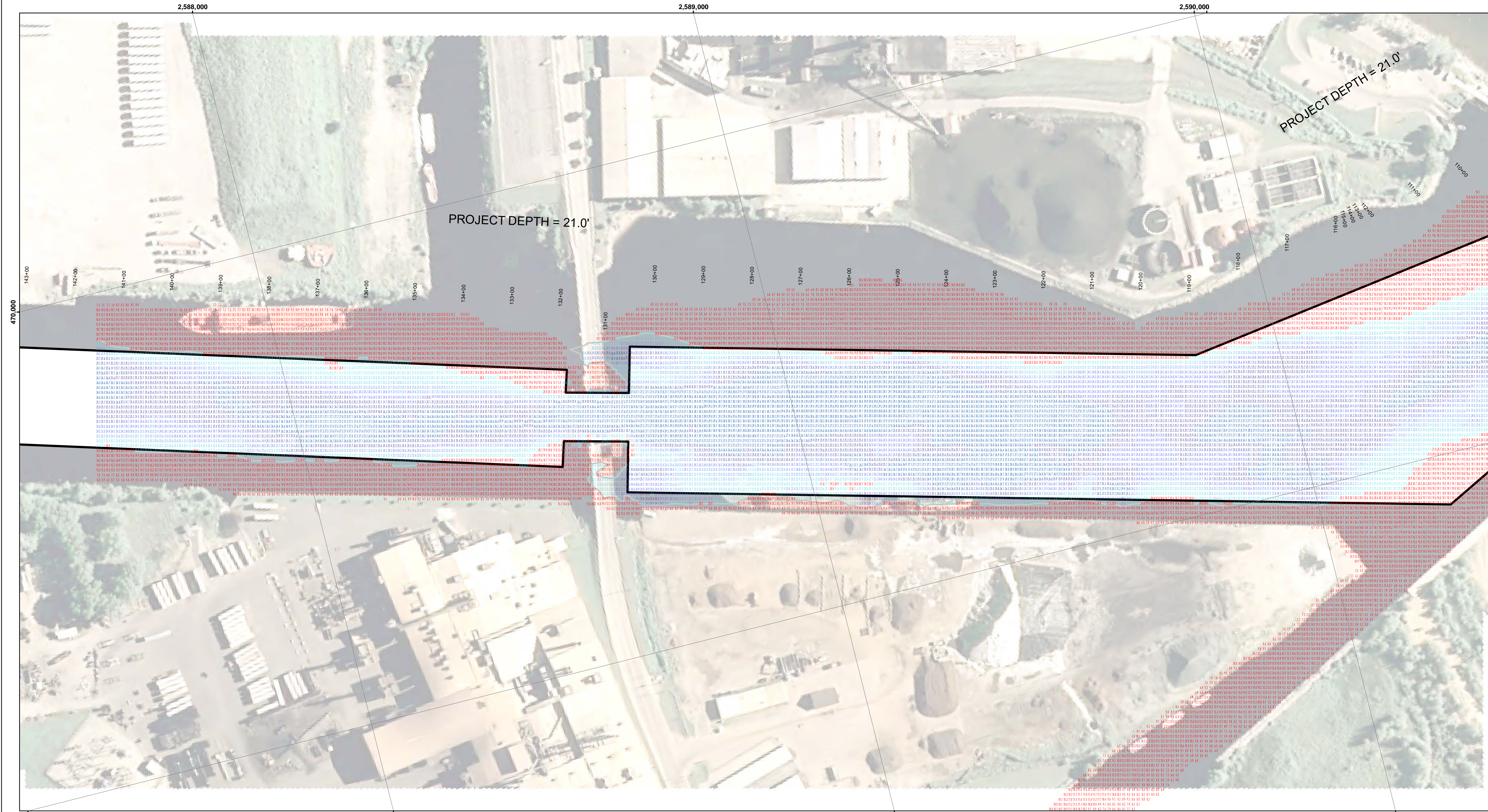
ACCESS LIMITS: The United States Government furnishes these data and the recipient accepts and uses them with the express understanding that the data is not to be used for any other purpose, expressed, or implied concerning the accuracy, completeness, readability, usability or suitability for any particular purpose of the recipient. These data are not to be used for any other purpose, expressed, or implied, without the express written consent of the United States Government. These data are not to be used for any other purpose, expressed, or implied, without the express written consent of the United States Government. These data are not to be used for any other purpose, expressed, or implied, without the express written consent of the United States Government.

U.S. ARMY CORPS OF ENGINEERS DETROIT DISTRICT		
Submitted:	Surveyed By:	
Recommended:	Plotted By:	
Approved:	Chief, Survey Section	
	Chief, Technical Services	

Marinette - Menominee Harbor W/M/I
Menominee Harbor
ME_01_NOM_20230503_CS
03 May 2023

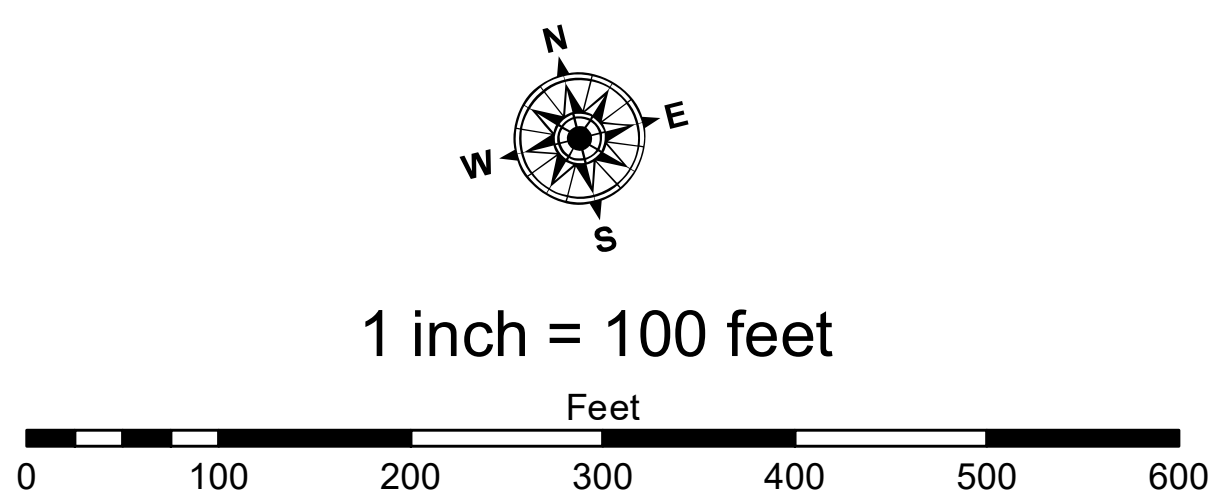
Sheet Reference Number
2 of 6

Revision Number:
4.2-2023060420



- LEGEND**
- Cable Submarine
 - Cable Overhead
 - Placement Area
 - ↓ Beacon, General
 - Contour Lines
 - ▭ Channel Limits
 - RELOCATED CHANNEL LIMITS

- SOUNDING LEGEND**
- LESS THAN PROJECT DEPTH
 - PROJECT DEPTH
 - PROJECT DEPTH +1'
 - PROJECT DEPTH +2'
 - PROJECT DEPTH +3'
 - PROJECT DEPTH +4'
 - PROJECT DEPTH +5'



- NOTES:**
1. THE SOUNDINGS INDICATED HEREIN ARE GENERALIZED DEPTHS AND ARE NOT REPRESENTATIVE OF THE FULL DATASET. THE SOUNDINGS REPRESENT THE MINIMUM DEPTH FOUND WITHIN THE 10X10 FOOT AREA CENTERED ON THE TEXT, DERIVED FROM A 1X1 FOOT AVERAGE DATASET AT CELL CENTER. THIS MAP SHOULD NOT BE USED FOR CHANNEL CLEARANCE OR VOLUME COMPUTATIONS. MINIMUM DEPTH DATA IS PRODUCED FOR STRIKE/SLOPE REMOVAL OPERATIONS AND NOTICE TO NAVIGATION INTERESTS.
 2. ELEVATIONS AND SOUNDING DEPTHS ARE REFERRED TO INTERNATIONAL GREAT LAKES DATUM 1985 (IGLD 85). ALL SOUNDINGS ARE IN FEET AND ARE REFERENCED TO LOW WATER DATUM ELEVATION, 577.5 FEET ABOVE MEAN WATER LEVEL AT RIMOUSKI, QUEBEC (INTERNATIONAL GREAT LAKES DATUM 1985). NOAA GAUGE LOCATED AT MENOMINEE, MI WAS USED TO DETERMINE THE WATER LEVEL DEPTHS ARE MEASURED USING AN RZSONIC 2024 MULTIBEAM SONAR.
 3. THE INFORMATION DEPICTED ON THIS MAP REPRESENTS THE RESULTS OF SURVEYS MADE ON DAY INDICATED AND CAN ONLY BE CONSIDERED AS INDICATING THE GENERAL CONDITIONS PRESENT AT THE TIME.
 4. HORIZONTAL POSITIONING IS DETERMINED USING REAL TIME KINEMATIC GLOBAL POSITIONING SYSTEM (RTK). CORRECTIONS ARE PROVIDED BY THE MICHIGAN CONTINUOUSLY OPERATING REFERENCE STATIONS (CORS). THE GPS RECEIVER IS MANUFACTURED BY APPLANIX MARINE POSMV VER 4.0.
 5. GRID COORDINATES ARE BASED ON THE WISCONSIN STATE PLANE COORDINATE SYSTEM, LAMBERT PROJECTION, CENTRAL ZONE 4802, NORTH AMERICAN DATUM 1983 (NAD83), US SURVEY FOOT.
 6. PROJECT DEPTH FOR THIS PROJECT ARE 21.0', 19.0' & 12.0'.
 7. NOTE NEW CHANNEL LIMITS STA 175+00 195+00 HAVE BEEN REALIGNED AND CONSTRUCTED IN ACCORDANCE WITH USACE SECTION 408 AUTHORITY, PROJECT #408-LRE-2020-0001. OFFICIAL CHANNEL RELOCATION HAS BEEN ACCEPTED BY USACE.



Public Domain Liability. The data represents the results of data collection and processing for a specific US Army Corps of Engineers activity and indicates the general existing conditions. The user is responsible for the accuracy of the data for any of the application of the data for other than its intended purpose. The user is responsible for the accuracy of the data for any of the application of the data for other than its intended purpose.

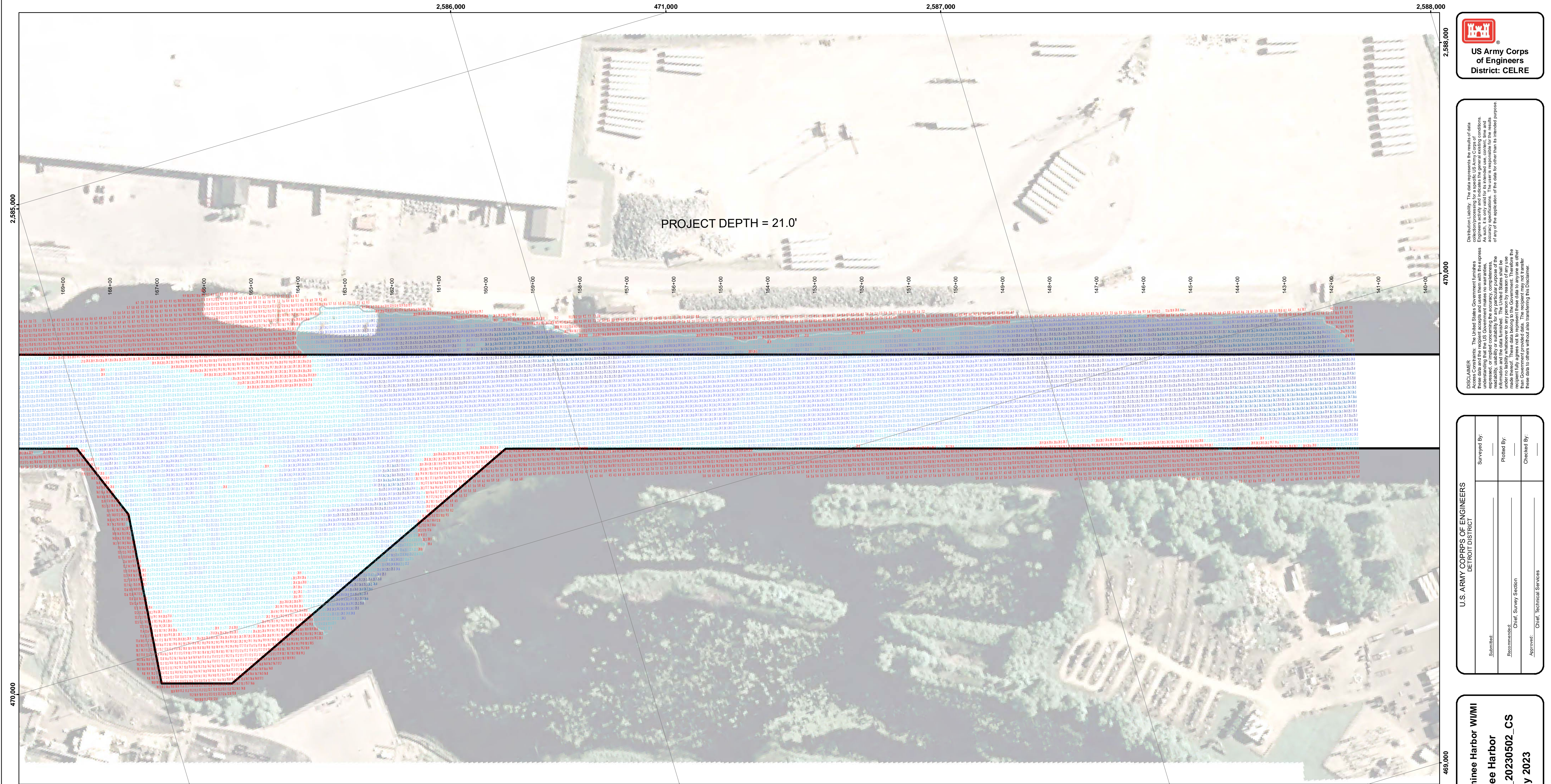
Access Constraints. The United States Government furnishes these data and the recipient accepts and uses them with the express understanding that they are not to be used for any purpose other than that for which they were provided, and that the data are not to be used for any purpose other than that for which they were provided, and that the data are not to be used for any purpose other than that for which they were provided.

U.S. ARMY CORPS OF ENGINEERS
DETROIT DISTRICT

Marinette - Menominee Harbor W/M/I
Menominee Harbor
ME_01_NOM_20230503_CS
03 May 2023

Sheet Reference Number
3 of 6

Revision Number:
4.2 20240610



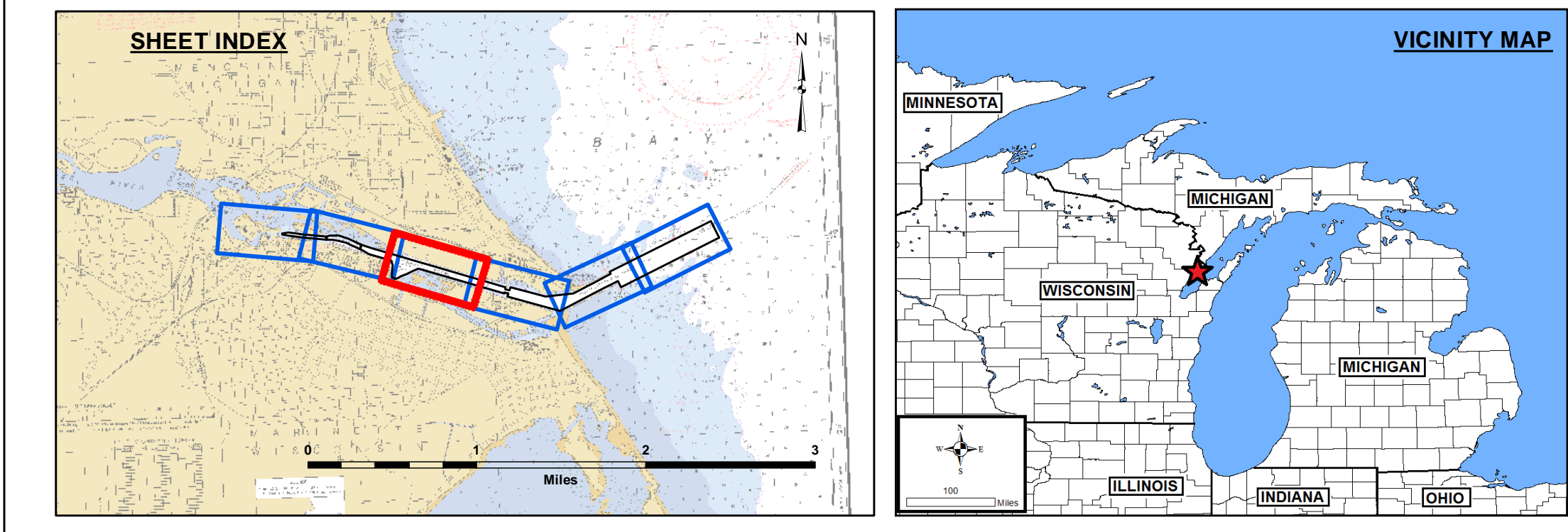
Public Use Liability: The data represents the results of data collection and processing for a specific US Army Corps of Engineers activity and indicates the general existing conditions of the project area. It is not intended for use for any purpose other than the intended purpose of the application of the data for other than its intended purpose.

Access Constraints: The United States Government furnishes these data and the recipient accepts and uses them with the express understanding that the data are not to be used for any purpose other than the intended purpose of the application of the data for other than its intended purpose.

Surveyed By:
Plotted By:
Checked By:
Submitted:
Recommended:
Approved:
Chief, Technical Services

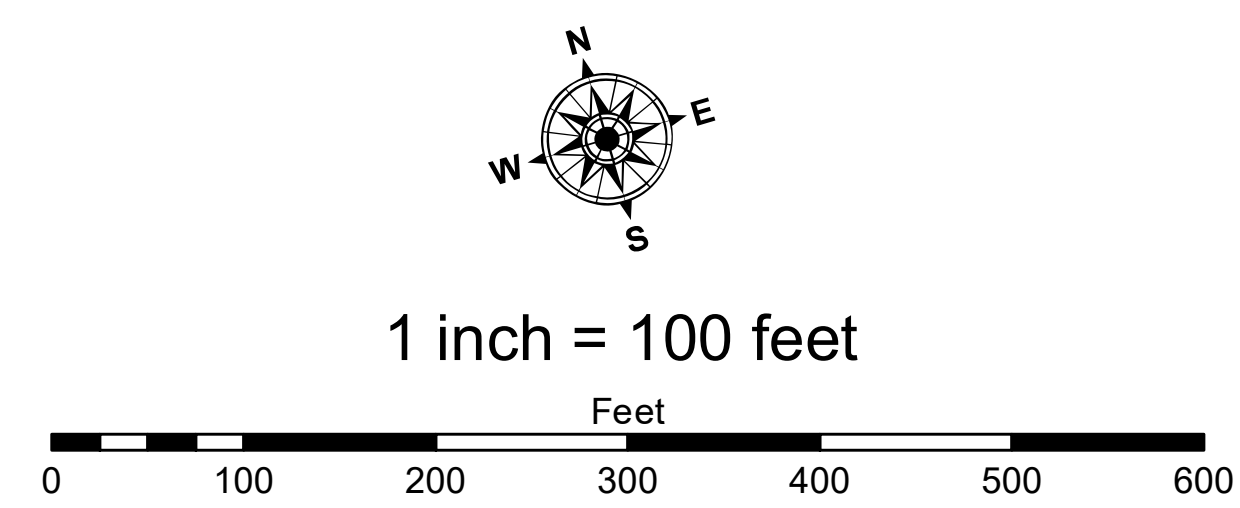
Marquette - Menominee Harbor W/M/I
Menominee Harbor
ME_01_NOM_20230502_CS
02 May 2023

Sheet
Reference
Number
4 of 6
Revision Number:
4.2 2024/06/20

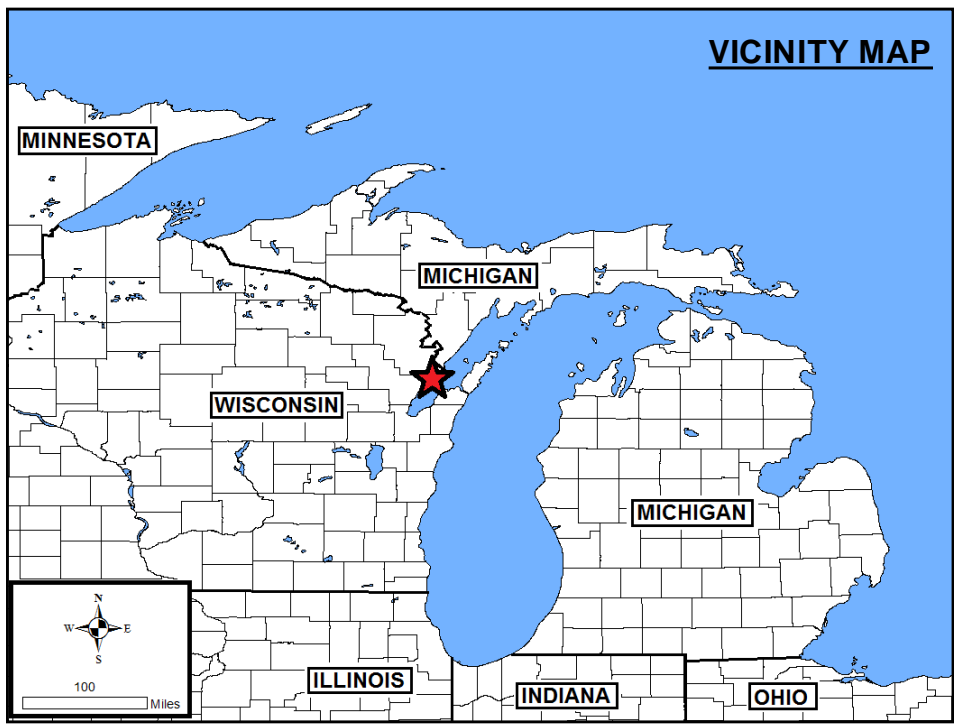
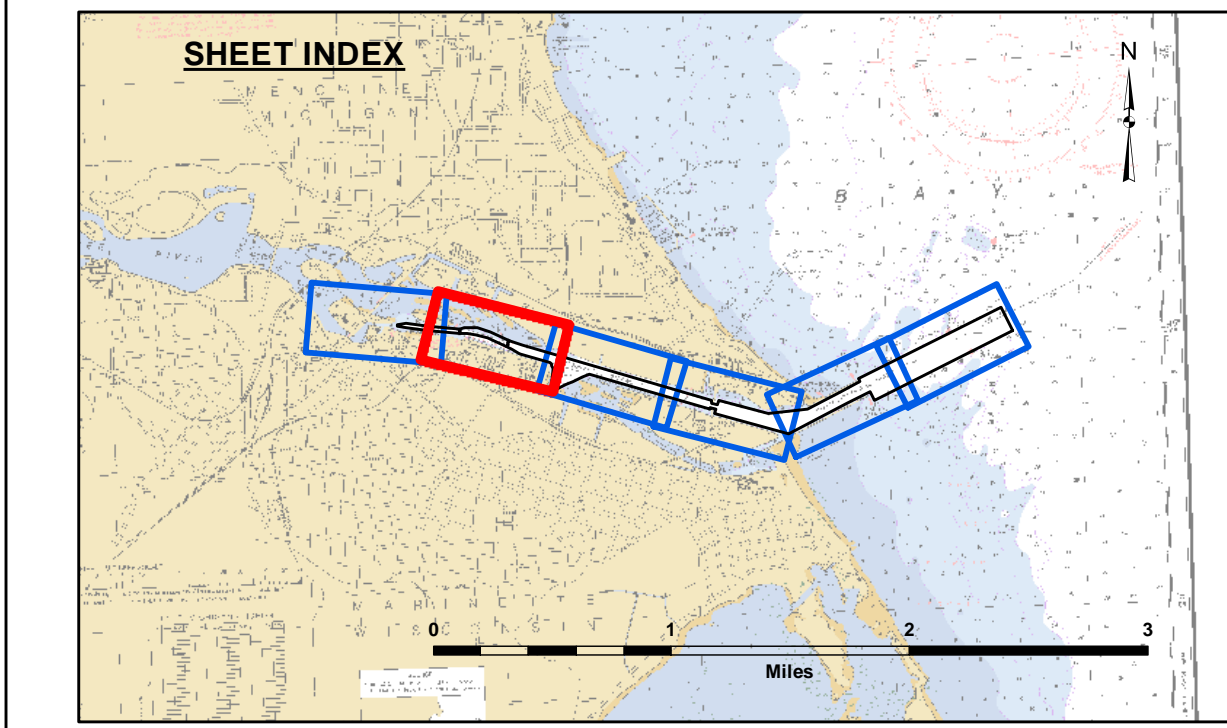
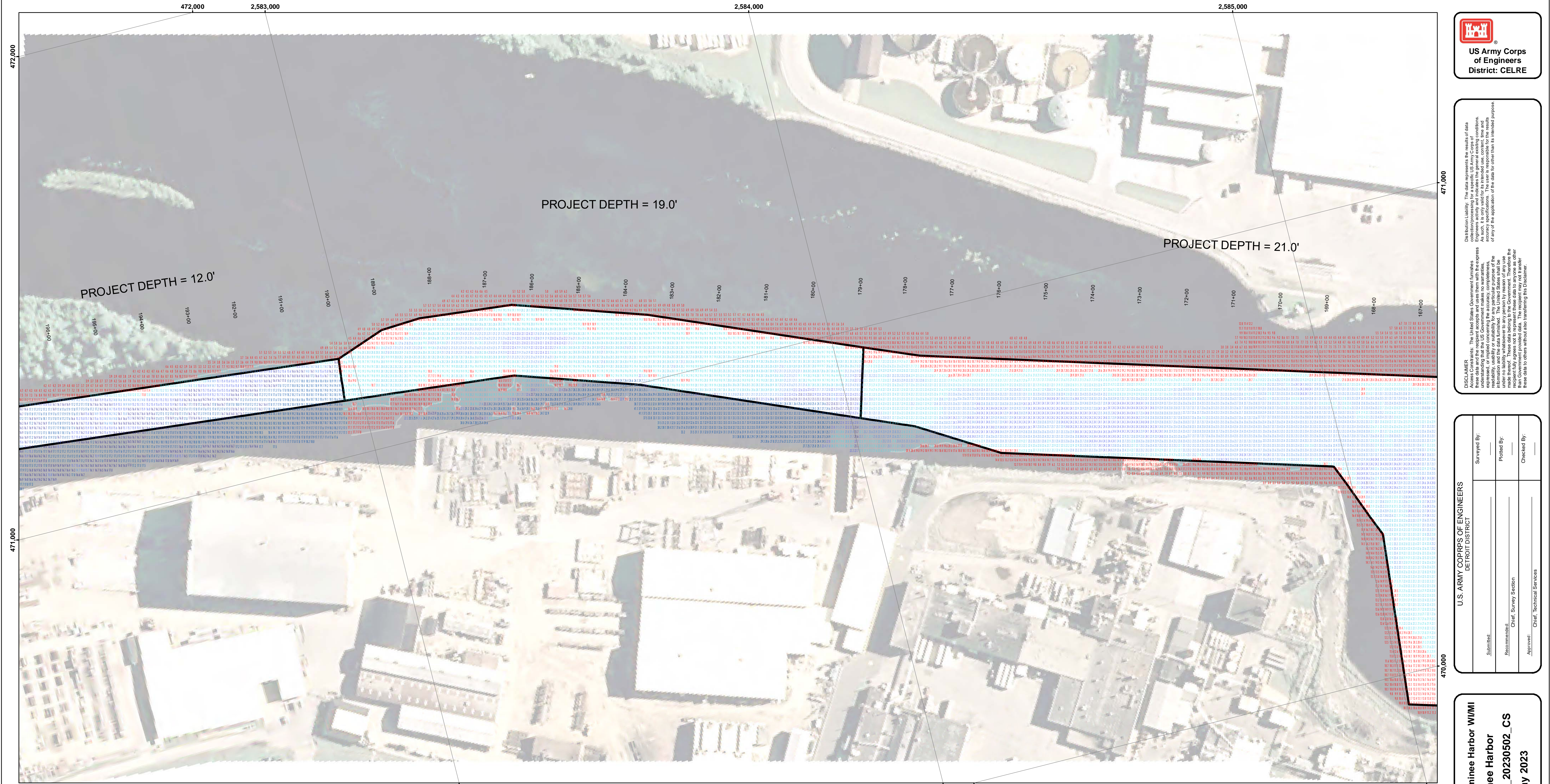


- LEGEND**
- Cable Submarine
 - Cable Overhead
 - Placement Area
 - ↓ Beacon, General
 - Contour Lines
 - ▭ Channel Limits
 - RELOCATED CHANNEL LIMITS

- SOUNDING LEGEND**
- LESS THAN PROJECT DEPTH
 - PROJECT DEPTH
 - PROJECT DEPTH +1'
 - PROJECT DEPTH +2'
 - PROJECT DEPTH +3'
 - PROJECT DEPTH +4'
 - PROJECT DEPTH +5'

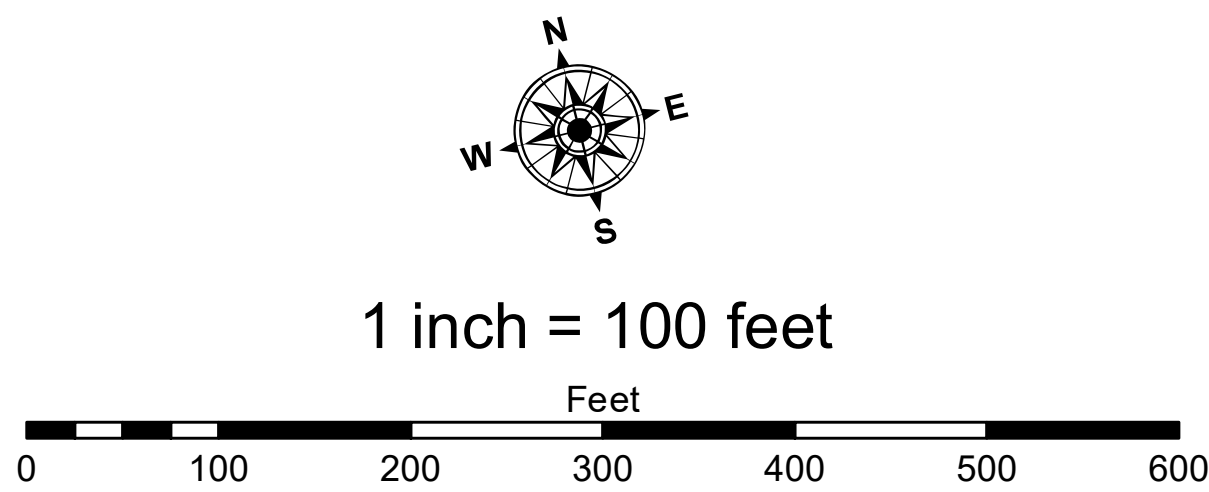


- NOTES:**
1. THE SOUNDINGS INDICATED HEREIN ARE GENERALIZED DEPTHS AND ARE NOT REPRESENTATIVE OF THE FULL DATASET. THE SOUNDINGS REPRESENT THE MINIMUM DEPTH FOUND WITHIN THE 10X10 FOOT AREA CENTERED ON THE TEXT, DERIVED FROM A 1X1 FOOT AVERAGE DATASET AT CELL CENTER. THIS MAP SHOULD NOT BE USED FOR CHANNEL CLEARANCE OR VOLUME COMPUTATIONS. MINIMUM DEPTH DATA IS PRODUCED FOR STRIKE/SWATH REMOVAL OPERATIONS AND NOTICE TO NAVIGATION INTERESTS.
 2. ELEVATIONS AND SOUNDING DEPTHS ARE REFERRED TO INTERNATIONAL GREAT LAKES DATUM 1985 (IGLD 85). ALL SOUNDINGS ARE IN FEET AND ARE REFERENCED TO LOW WATER DATUM ELEVATION, 577.5 FEET ABOVE MEAN WATER LEVEL AT REMOUSKI, QUEBEC (INTERNATIONAL GREAT LAKES DATUM 1985). NOAA GAUGE LOCATED AT MENOMINEE, MI WAS USED TO DETERMINE THE WATER LEVEL DEPTHS ARE MEASURED USING AN RZSONIC M4 MULTIBEAM SONAR.
 3. THE INFORMATION DEPICTED ON THIS MAP REPRESENTS THE RESULTS OF SURVEYS MADE ON DAY INDICATED AND CAN ONLY BE CONSIDERED AS INDICATING THE GENERAL CONDITIONS PRESENT AT THE TIME.
 4. HORIZONTAL POSITIONING IS DETERMINED USING REAL TIME KINEMATIC GLOBAL POSITIONING SYSTEM (RTK). CORRECTIONS ARE PROVIDED BY THE MICHIGAN CONTINUOUSLY OPERATING REFERENCE STATIONS (CORS). THE GPS RECEIVER IS MANUFACTURED BY APPLANIX MARINE POSMV VER 4.0.
 5. GRID COORDINATES ARE BASED ON THE WISCONSIN STATE PLANE COORDINATE SYSTEM, LAMBERT PROJECTION, CENTRAL ZONE 4802, NORTH AMERICAN DATUM 1983 (NAD83), US SURVEY FOOT.
 6. PROJECT DEPTH FOR THIS PROJECT ARE 21.0', 19.0' & 12.0'.
 7. NOTE NEW CHANNEL LIMITS STA 175+00 195+00 HAVE BEEN REALIGNED AND CONSTRUCTED IN ACCORDANCE WITH USACE SECTION 408 AUTHORITY, PROJECT #408-LRE-2020-0001. OFFICIAL CHANNEL RELOCATION HAS BEEN ACCEPTED BY USACE.



- LEGEND**
- Cable Submarine
 - Cable Overhead
 - Placement Area
 - ⌞ Beacon, General
 - Contour Lines
 - ▭ Channel Limits
 - RELOCATED CHANNEL LIMITS

- SOUNDING LEGEND**
- LESS THAN PROJECT DEPTH
 - PROJECT DEPTH
 - PROJECT DEPTH +1'
 - PROJECT DEPTH +2'
 - PROJECT DEPTH +3'
 - PROJECT DEPTH +4'
 - PROJECT DEPTH +5'



- NOTES:**
1. THE SOUNDINGS INDICATED HEREIN ARE GENERALIZED DEPTHS AND ARE NOT REPRESENTATIVE OF THE FULL DATASET. THE SOUNDINGS REPRESENT THE MINIMUM DEPTH FOUND WITHIN THE 10X10 FOOT AREA CENTERED ON THE TEXT, DERIVED FROM A 1X1 FOOT AVERAGE DATASET AT CELL CENTER. THIS MAP SHOULD NOT BE USED FOR CHANNEL CLEARANCE OR VOLUME COMPUTATIONS. MINIMUM DEPTH DATA IS PRODUCED FOR STRIKE/SOAL REMOVAL OPERATIONS AND NOTICE TO NAVIGATION INTERESTS.
 2. ELEVATIONS AND SOUNDING DEPTHS ARE REFERRED TO INTERNATIONAL GREAT LAKES DATUM 1985 (IGLD 85). ALL SOUNDINGS ARE IN FEET AND ARE REFERENCED TO LOW WATER DATUM ELEVATION, 577.5 FEET ABOVE MEAN WATER LEVEL AT RIMOUSKI, QUEBEC (INTERNATIONAL GREAT LAKES DATUM 1985). NOAA GAUGE LOCATED AT MENOMINEE, MI WAS USED TO DETERMINE THE WATER LEVEL DEPTHS ARE MEASURED USING AN R2SONIC 2024 MULTIBEAM SONAR.
 3. THE INFORMATION DEPICTED ON THIS MAP REPRESENTS THE RESULTS OF SURVEYS MADE ON DAY INDICATED AND CAN ONLY BE CONSIDERED AS INDICATING THE GENERAL CONDITIONS PRESENT AT THE TIME.
 4. HORIZONTAL POSITIONING IS DETERMINED USING REAL TIME KINEMATIC GLOBAL POSITIONING SYSTEM (RTK). CORRECTIONS ARE PROVIDED BY THE MICHIGAN CONTINUOUSLY OPERATING REFERENCE STATIONS (CORS). THE GPS RECEIVER IS MANUFACTURED BY APPLANIX MARINE POSMV VER 4.0.
 5. GRID COORDINATES ARE BASED ON THE WISCONSIN STATE PLANE COORDINATE SYSTEM, LAMBERT PROJECTION, CENTRAL ZONE 4802, NORTH AMERICAN DATUM 1983 (NAD83), US SURVEY FOOT.
 6. PROJECT DEPTH FOR THIS PROJECT ARE 21.0', 19.0' & 12.0'.
 7. NOTE NEW CHANNEL LIMITS STA 175+00 195+00 HAVE BEEN REALIGNED AND CONSTRUCTED IN ACCORDANCE WITH USACE SECTION 408 AUTHORITY, PROJECT #408-LRE-2020-0001. OFFICIAL CHANNEL RELOCATION HAS BEEN ACCEPTED BY USACE.



This data is publicly available. The data represents the results of data collection and processing for a specific project. The U.S. Army Corps of Engineers activity and indicates the general existing conditions. The user is responsible for the accuracy, completeness, and reliability of the data for other than its intended purpose of any of the application of the data for other than its intended purpose.

These data and the recipient accept and uses them with the express understanding that the data is provided for informational purposes only. The data is not intended for use in any other manner. The user is responsible for the accuracy, completeness, and reliability of the data for other than its intended purpose of any of the application of the data for other than its intended purpose.

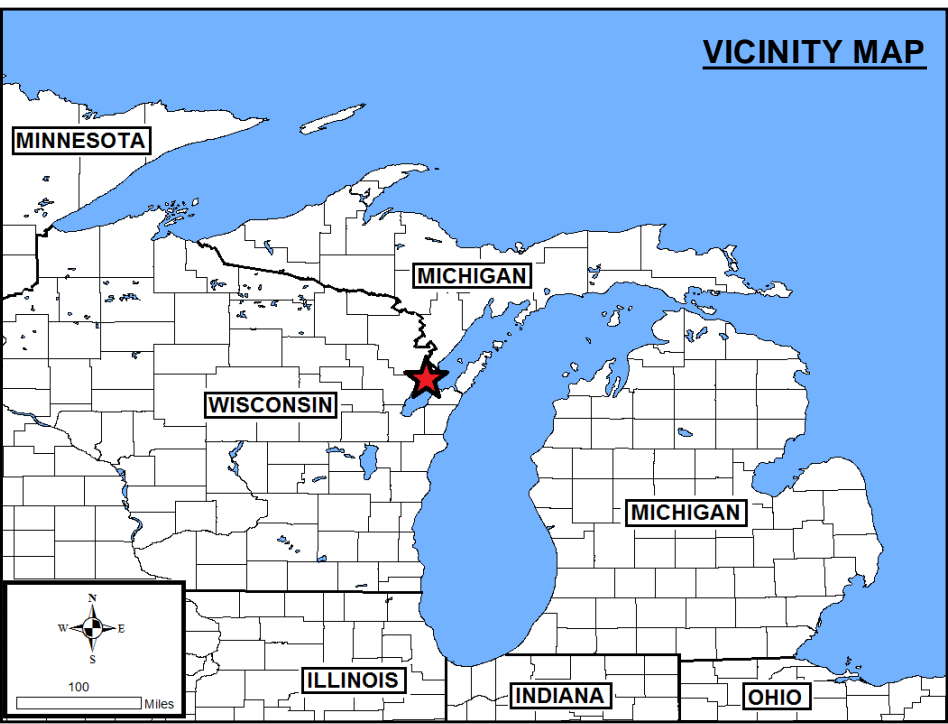
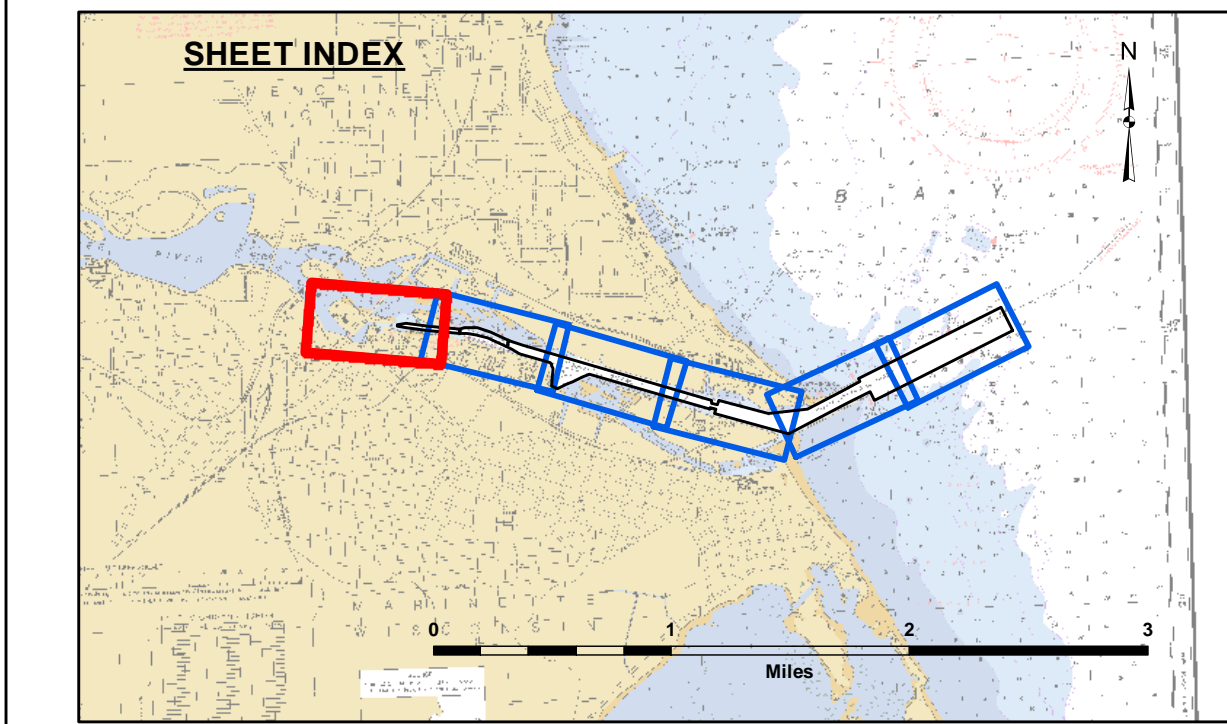
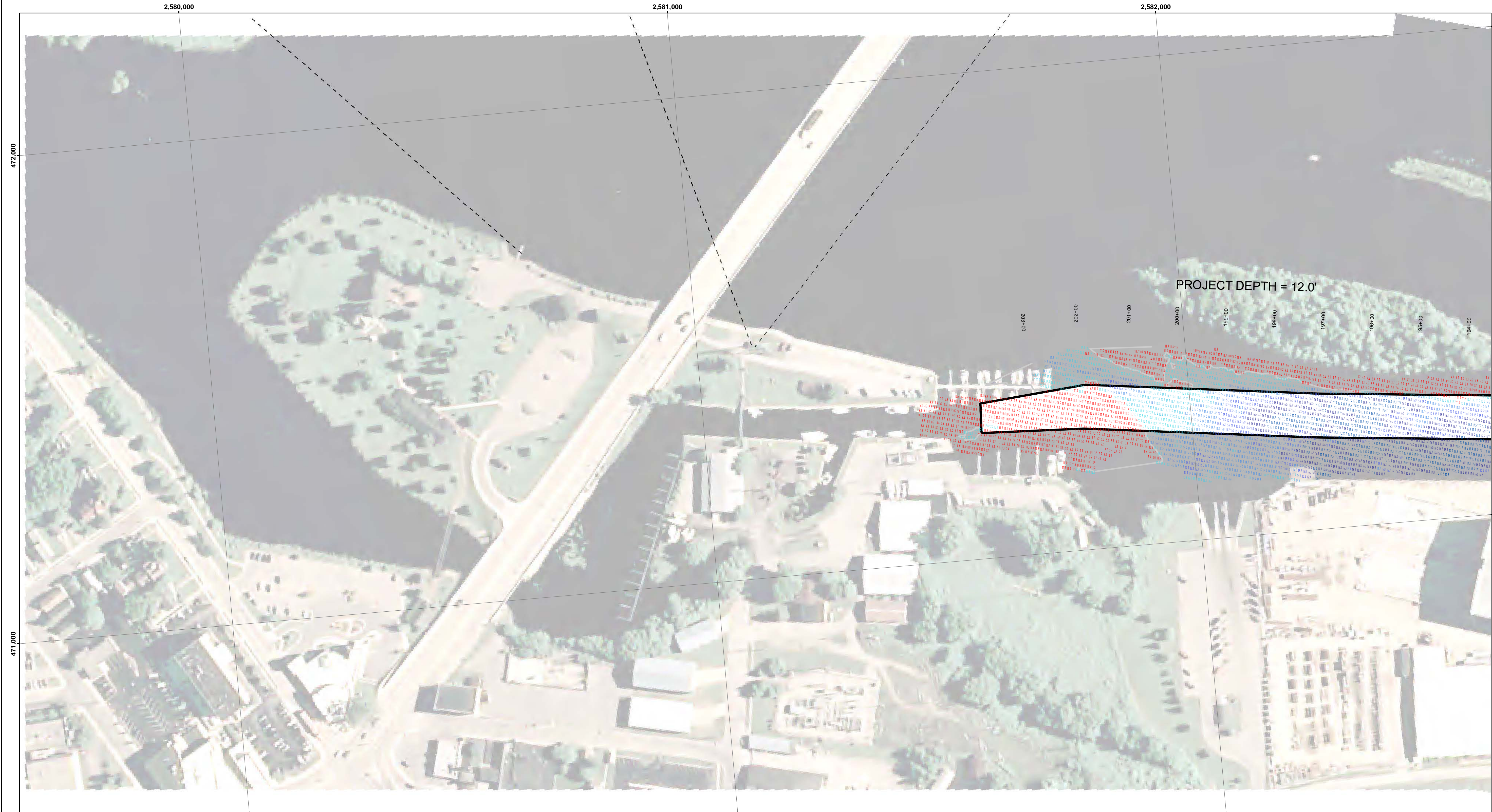
These data are provided for informational purposes only. The data is not intended for use in any other manner. The user is responsible for the accuracy, completeness, and reliability of the data for other than its intended purpose of any of the application of the data for other than its intended purpose.

Submitted:	Surveyed By:
Recommended:	Plotted By:
Approved:	Checked By:

U.S. ARMY CORPS OF ENGINEERS
DETROIT DISTRICT

Marquette - Menominee Harbor W/M/I
Menominee Harbor
ME_01_NOM_20230502_CS
02 May 2023

Sheet
Reference
Number
5 of 6



LEGEND

- Cable Submarine
- Cable Overhead
- Placement Area
- ⌋ Beacon, General
- Contour Lines
- ▭ Channel Limits
- RELOCATED CHANNEL LIMITS

SOUNDING LEGEND

- LESS THAN PROJECT DEPTH
- PROJECT DEPTH
- PROJECT DEPTH +1'
- PROJECT DEPTH +2'
- PROJECT DEPTH +3'
- PROJECT DEPTH +4'
- PROJECT DEPTH +5'

1 inch = 100 feet

Feet

0 100 200 300 400 500 600

NOTES:

1. THE SOUNDINGS INDICATED HEREIN ARE GENERALIZED DEPTHS AND ARE NOT REPRESENTATIVE OF THE FULL DATASET. THE SOUNDINGS REPRESENT THE MINIMUM DEPTH FOUND WITHIN THE 10X10 FOOT AREA CENTERED ON THE TEXT, DERIVED FROM A 1X1 FOOT AVERAGE DATASET AT CELL CENTER. THIS MAP SHOULD NOT BE USED FOR CHANNEL CLEARANCE OR VOLUME COMPUTATIONS. MINIMUM DEPTH DATA IS PRODUCED FOR STRIKE/SOAL REMOVAL OPERATIONS AND NOTICE TO NAVIGATION INTERESTS.

2. ELEVATIONS AND SOUNDING DEPTHS ARE REFERRED TO INTERNATIONAL GREAT LAKES DATUM 1985 (IGLD 85). ALL SOUNDINGS ARE IN FEET AND ARE REFERENCED TO LOW WATER DATUM ELEVATION, 577.5 FEET ABOVE MEAN WATER LEVEL AT RIMOUSKI, QUEBEC (INTERNATIONAL GREAT LAKES DATUM 1985). NOAA GAUGE LOCATED AT MENOMINEE, MI WAS USED TO DETERMINE THE WATER LEVEL DEPTHS ARE MEASURED USING AN R2SONIC 2024 MULTIBEAM SONAR.

3. THE INFORMATION DEPICTED ON THIS MAP REPRESENTS THE RESULTS OF SURVEYS MADE ON DAY INDICATED AND CAN ONLY BE CONSIDERED AS INDICATING THE GENERAL CONDITIONS PRESENT AT THE TIME.

4. HORIZONTAL POSITIONING IS DETERMINED USING REAL TIME KINEMATIC GLOBAL POSITIONING SYSTEM (RTK). CORRECTIONS ARE PROVIDED BY THE MICHIGAN CONTINUOUSLY OPERATING REFERENCE STATIONS (CORS). THE GPS RECEIVER IS MANUFACTURED BY APPLANK MARINE POS/MV VER 4.0.

5. GRID COORDINATES ARE BASED ON THE WISCONSIN STATE PLANE COORDINATE SYSTEM, LAMBERT PROJECTION, CENTRAL ZONE 4802, NORTH AMERICAN DATUM 1983 (NAD83), US SURVEY FOOT.

6. PROJECT DEPTH FOR THIS PROJECT ARE 21.0', 19.0' & 12.0'.

7. NOTE NEW CHANNEL LIMITS STA 175+00 195+00 HAVE BEEN REALIGNED AND CONSTRUCTED IN ACCORDANCE WITH USACE SECTION 408 AUTHORITY, PROJECT #408-LRE-2020-0001. OFFICAL CHANNEL RELOCATION HAS BEEN ACCEPTD BY USACE.

U.S. ARMY CORPS OF ENGINEERS
DETROIT DISTRICT

Submitted:	Surveyed By:
Recommended:	Plotted By:
Approved:	Checked By:

Chief, Survey Section
Chief, Technical Services

Marinette - Menominee Harbor W/M/I
Menominee Harbor
ME_01_NOM_20230502_CS
02 May 2023

Sheet
Reference
Number
6 of 6



DISCLAIMER: The data represents the results of data collection and processing for a specific US Army Corps of Engineers activity and indicates the general existing conditions. The data is not intended to be used for any other purpose, expressed, or implied concerning the accuracy, completeness, readability, usability or suitability for any particular purpose of the user. The user is responsible for the results of any of the application of the data for other than its intended purpose. These data belong to the Government. The recipient may not transfer these data to others without transferring this Disclaimer.

ACCESS CONSTRAINTS: The United States Government furnishes these data and the recipient accepts and uses them with the express understanding that the data are not to be used for any other purpose, expressed, or implied concerning the accuracy, completeness, readability, usability or suitability for any particular purpose of the user. The user is responsible for the results of any of the application of the data for other than its intended purpose. These data belong to the Government. The recipient may not transfer these data to others without transferring this Disclaimer.