

LEGEND

- Cable Submarine
- - - Cable Overhead
- Placement Area
- ⌋ Beacon, General
- Contour Lines
- ▭ Channel Limits
- RELOCATED CHANNEL LIMITS

SOUNDING LEGEND

- LESS THAN PROJECT DEPTH
- PROJECT DEPTH
- PROJECT DEPTH +1'
- PROJECT DEPTH +2'
- PROJECT DEPTH +3'
- PROJECT DEPTH +4'
- PROJECT DEPTH +5'

1 inch = 100 feet

Feet

0 100 200 300 400 500 600

- NOTES:**
1. THE SOUNDINGS INDICATED HEREIN ARE GENERALIZED DEPTHS AND ARE NOT REPRESENTATIVE OF THE FULL DATASET. THE SOUNDINGS REPRESENT THE MINIMUM DEPTH FOUND WITHIN THE 10X10 FOOT AREA CENTERED ON THE TEXT, DERIVED FROM A 1X1 FOOT AVERAGE DATASET AT CELL CENTER. THIS MAP SHOULD NOT BE USED FOR CHANNEL CLEARANCE OR VOLUME COMPUTATIONS. MINIMUM DEPTH DATA IS PRODUCED FOR STRIKE/SOAL REMOVAL OPERATIONS AND NOTICE TO NAVIGATION INTERESTS.
 2. ELEVATIONS AND SOUNDING DEPTHS ARE REFERRED TO INTERNATIONAL GREAT LAKES DATUM 1985 (IGLD 85). ALL SOUNDINGS ARE IN FEET AND ARE REFERENCED TO LOW WATER DATUM ELEVATION, 577.5 FEET ABOVE MEAN WATER LEVEL AT RIMOUSKI, QUEBEC (INTERNATIONAL GREAT LAKES DATUM 1985). NOAA GAUGE LOCATED AT MENOMINEE, MI WAS USED TO DETERMINE THE WATER LEVEL DEPTHS ARE MEASURED USING AN R2SONIC 2024 MULTIBEAM SONAR.
 3. THE INFORMATION DEPICTED ON THIS MAP REPRESENTS THE RESULTS OF SURVEYS MADE ON DAY INDICATED AND CAN ONLY BE CONSIDERED AS INDICATING THE GENERAL CONDITIONS PRESENT AT THE TIME.
 4. HORIZONTAL POSITIONING IS DETERMINED USING REAL TIME KINEMATIC GLOBAL POSITIONING SYSTEM (RTK). CORRECTIONS ARE PROVIDED BY THE MICHIGAN CONTINUOUSLY OPERATING REFERENCE STATIONS (CORS). THE GPS RECEIVER IS MANUFACTURED BY APPLANIX MARINE POSIMV VER 4.0.
 5. GRID COORDINATES ARE BASED ON THE WISCONSIN STATE PLANE COORDINATE SYSTEM, LAMBERT PROJECTION, CENTRAL ZONE 4802, NORTH AMERICAN DATUM 1983 (NAD83), US SURVEY FOOT.
 6. PROJECT DEPTH FOR THIS PROJECT ARE 21.0', 19.0' & 12.0'.
 7. NOTE NEW CHANNEL LIMITS. STA 175+00-195+00 HAVE BEEN REALIGNED AND CONSTRUCTED IN ACCORDANCE WITH USACE SECTION 408 AUTHORITY, PROJECT #408-LRE-2020-0001. OFFICAL CHANNEL RELOCATION HAS BEEN ACCEPTED BY USACE.


**US Army Corps
of Engineers**
District: CELRE

DISCLAIMER: The data presented in the results of data collection is for informational purposes only. The data is not intended for use in any other manner. The user is responsible for the results of any application of the data for other than its intended purpose.

Access Constraints: The United States Government furnishes these data and the recipient accepts and uses them with the express understanding that the data are not to be used for any other purpose, expressed, or implied concerning the accuracy, completeness, readability, usability, or suitability for any particular purpose of the recipient. These data are not to be used for any other purpose, expressed, or implied, without the express written consent of the United States Government. These data are not to be used for any other purpose, expressed, or implied, without the express written consent of the United States Government. These data are not to be used for any other purpose, expressed, or implied, without the express written consent of the United States Government.

U.S. ARMY CORPS OF ENGINEERS
DETROIT DISTRICT

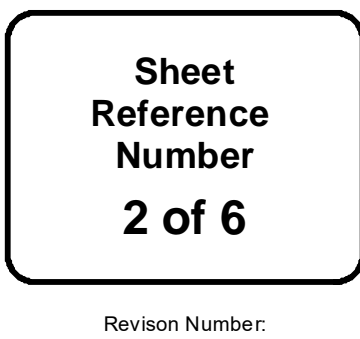
Submitted By:	Surveyed By:
Recommended By:	Plotted By:
Approved:	Checked By:

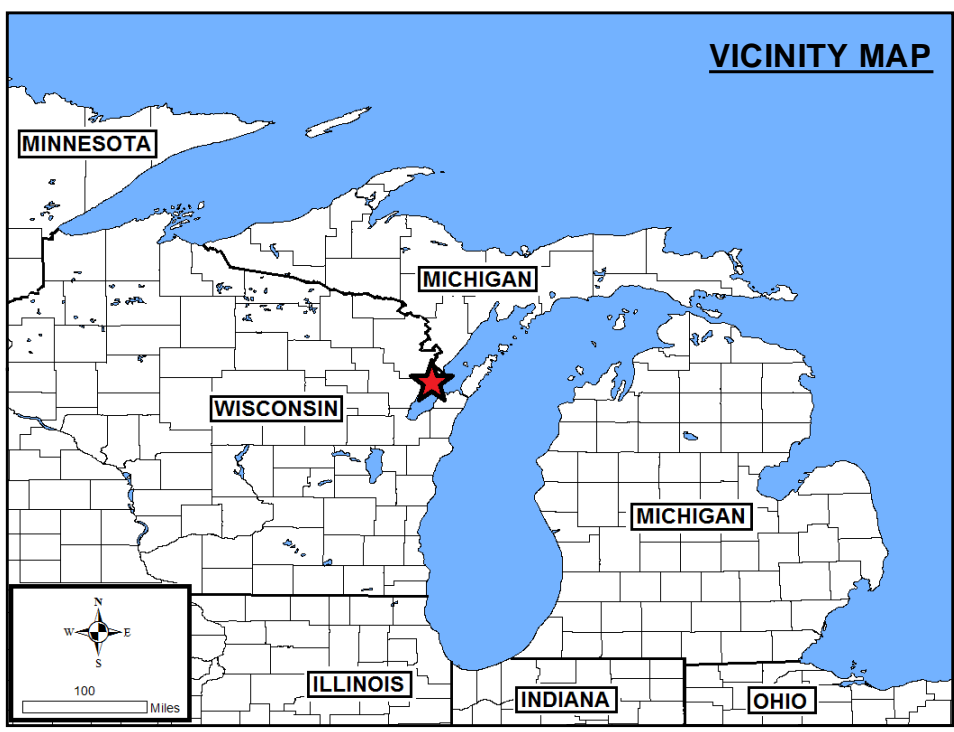
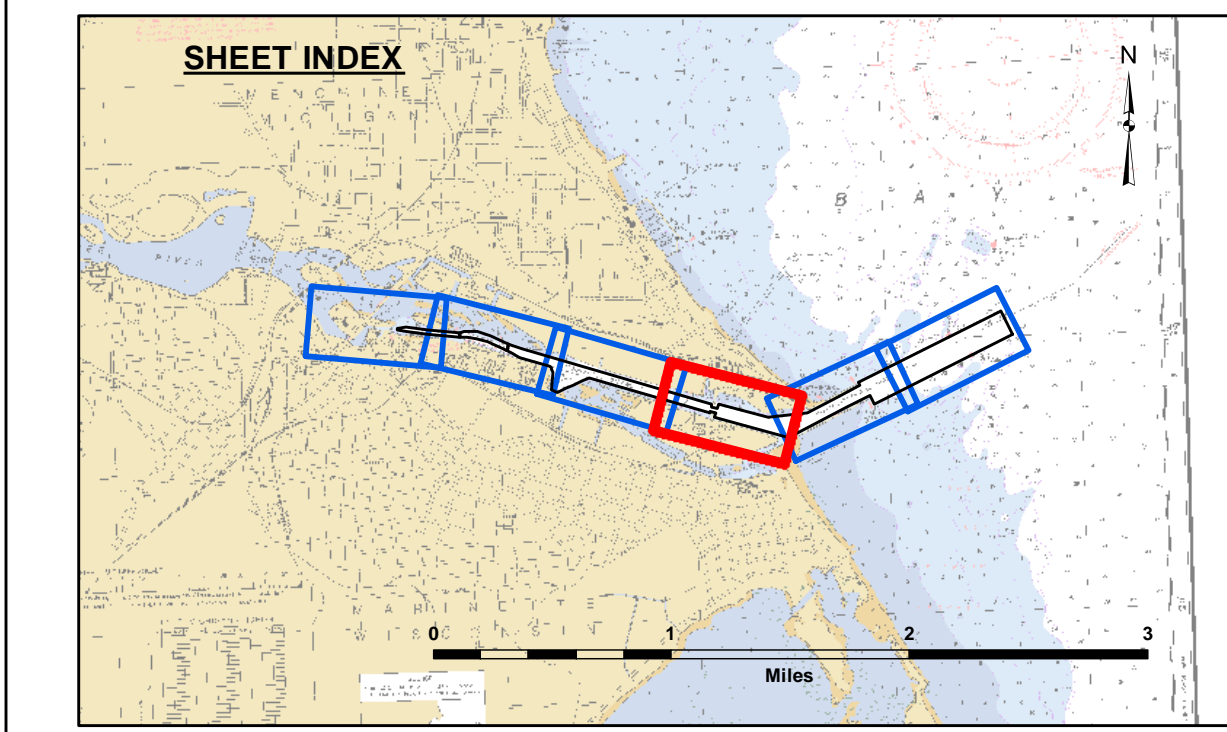
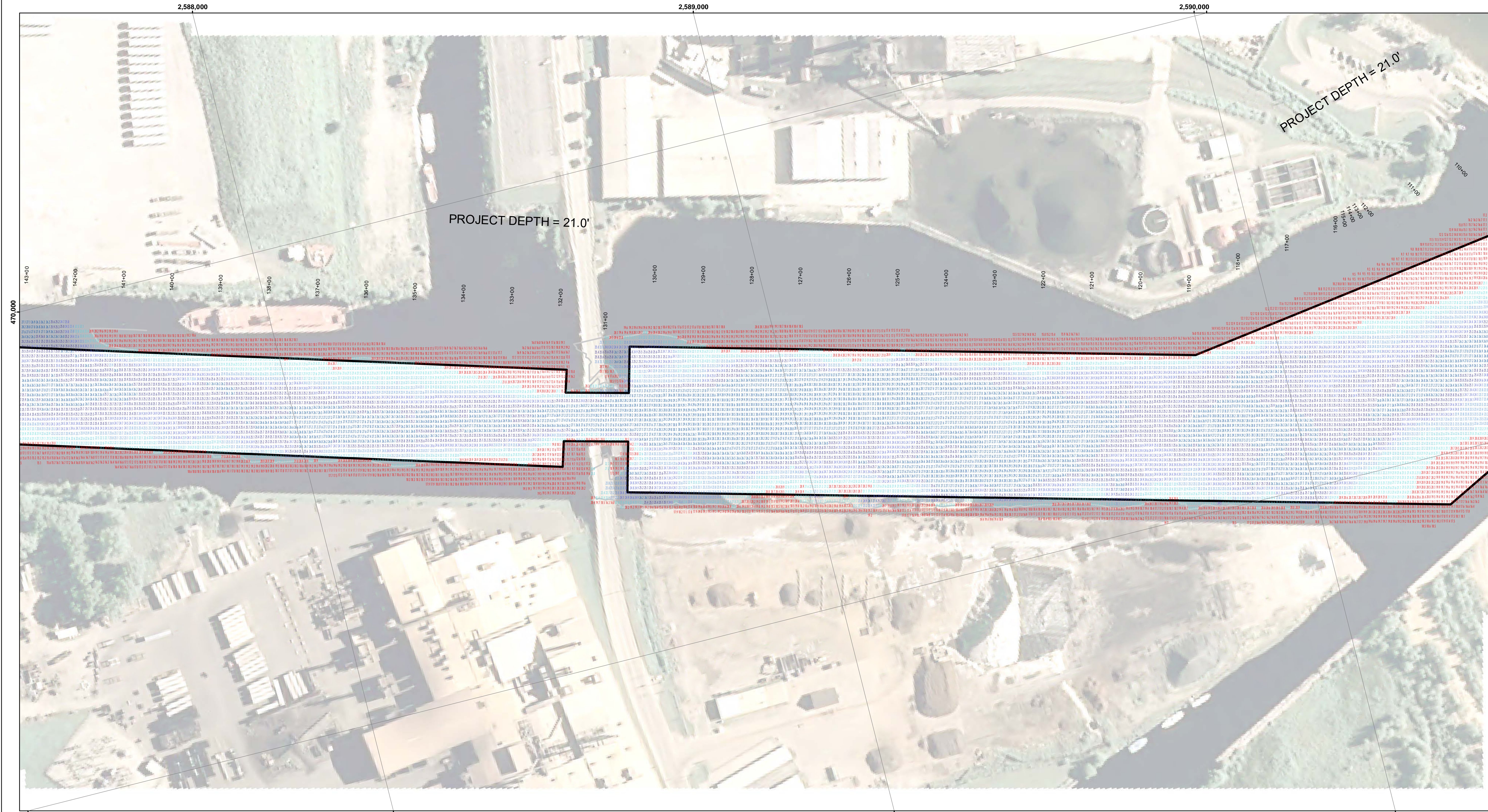
Chief, Survey Section
Chief, Technical Services

Marinette - Menominee Harbor W/M
Menominee Harbor
ME_01_NOM_20220531_CS
31 May 2022

**Sheet
Reference
Number**
1 of 6

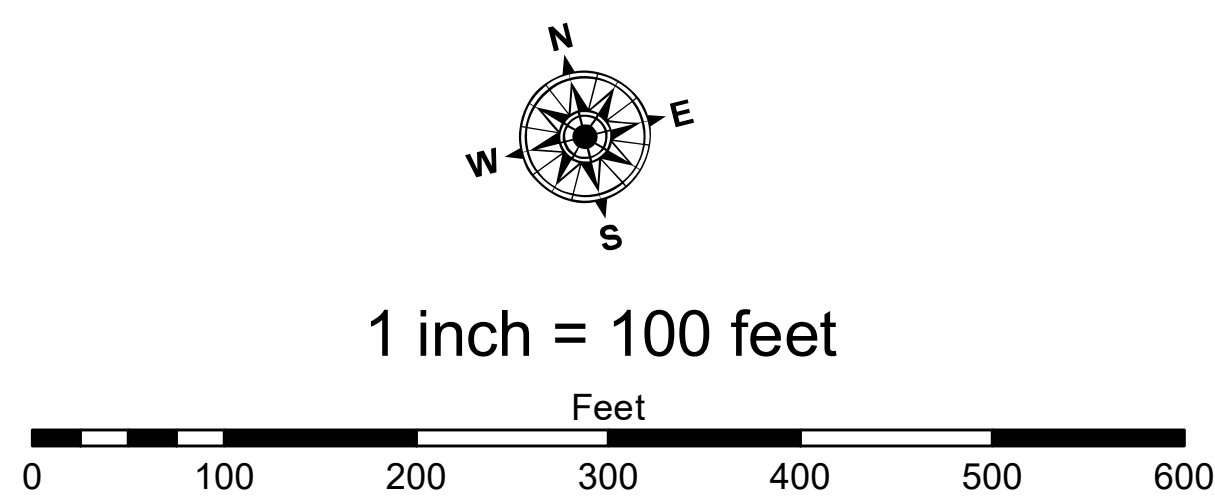
Revision Number:
4.3-2022/04/20





- LEGEND**
- Cable Submarine
 - Cable Overhead
 - Placement Area
 - ⌋ Beacon, General
 - Contour Lines
 - ▭ Channel Limits
 - RELOCATED CHANNEL LIMITS

- SOUNDING LEGEND**
- LESS THAN PROJECT DEPTH
 - PROJECT DEPTH
 - PROJECT DEPTH +1'
 - PROJECT DEPTH +2'
 - PROJECT DEPTH +3'
 - PROJECT DEPTH +4'
 - PROJECT DEPTH +5'



- NOTES:**
1. THE SOUNDINGS INDICATED HEREIN ARE GENERALIZED DEPTHS AND ARE NOT REPRESENTATIVE OF THE FULL DATASET. THE SOUNDINGS REPRESENT THE MINIMUM DEPTH FOUND WITHIN THE 10X10 FOOT AREA CENTERED ON THE TEXT, DERIVED FROM A 1X1 FOOT AVERAGE DATASET AT CELL CENTER. THIS MAP SHOULD NOT BE USED FOR CHANNEL CLEARANCE OR VOLUME COMPUTATIONS. MINIMUM DEPTH DATA IS PRODUCED FOR STRIKESHORE REMOVAL OPERATIONS AND NOTICE TO NAVIGATION INTERESTS.
 2. ELEVATIONS AND SOUNDING DEPTHS ARE REFERRED TO INTERNATIONAL GREAT LAKES DATUM 1985 (IGLD 85). ALL SOUNDINGS ARE IN FEET AND ARE REFERENCED TO LOW WATER DATUM ELEVATION, 577.5 FEET ABOVE MEAN WATER LEVEL AT RIMOUSKI, QUEBEC (INTERNATIONAL GREAT LAKES DATUM 1985). NOAA GAUGE LOCATED AT MENOMINEE, MI WAS USED TO DETERMINE THE WATER LEVEL DEPTHS ARE MEASURED USING AN RS20NCI M4 MULTIBEAM SONAR.
 3. THE INFORMATION DEPICTED ON THIS MAP REPRESENTS THE RESULTS OF SURVEYS MADE ON DAY INDICATED AND CAN ONLY BE CONSIDERED AS INDICATING THE GENERAL CONDITIONS PRESENT AT THE TIME.
 4. HORIZONTAL POSITIONING IS DETERMINED USING REAL TIME KINEMATIC GLOBAL POSITIONING SYSTEM (RTK). CORRECTIONS ARE PROVIDED BY THE MICHIGAN CONTINUOUSLY OPERATING REFERENCE STATIONS (CORS). THE GPS RECEIVER IS MANUFACTURED BY APPLINK MARINE POSMV VER 4.0.
 5. GRID COORDINATES ARE BASED ON THE WISCONSIN STATE PLANE COORDINATE SYSTEM. LAMBERT PROJECTION, CENTRAL ZONE 4802, NORTH AMERICAN DATUM 1983 (NAD83), US SURVEY FOOT.
 6. PROJECT DEPTH FOR THIS PROJECT ARE 21'0", 19'0" & 12'0".
 7. NOTE NEW CHANNEL LIMITS STA 175+00 195+00 HAVE BEEN REALIGNED AND CONSTRUCTED IN ACCORDANCE WITH USACE SECTION 408 AUTHORITY, PROJECT #408-LR-2020-0001. OFFICIAL CHANNEL RELOCATION HAS BEEN ACCEPTED BY USACE.



Disclaimer: Liability. The data presented on this map is for informational purposes only. The data was collected by the US Army Corps of Engineers and is not intended for use in any other manner. The user is responsible for the results of any application of the data for other than its intended purpose.

Access: The United States Government furnishes this data and the recipient accepts and uses them with the express understanding that the data is not to be used for any other purpose, expressed or implied, excepting the accuracy, completeness, reliability, usability or suitability for any particular purpose of the user. The data is not to be used for any other purpose, expressed or implied, excepting the accuracy, completeness, reliability, usability or suitability for any particular purpose of the user. The data is not to be used for any other purpose, expressed or implied, excepting the accuracy, completeness, reliability, usability or suitability for any particular purpose of the user.

U.S. ARMY CORPS OF ENGINEERS
DETROIT DISTRICT

Submitted: _____

Reviewed: _____

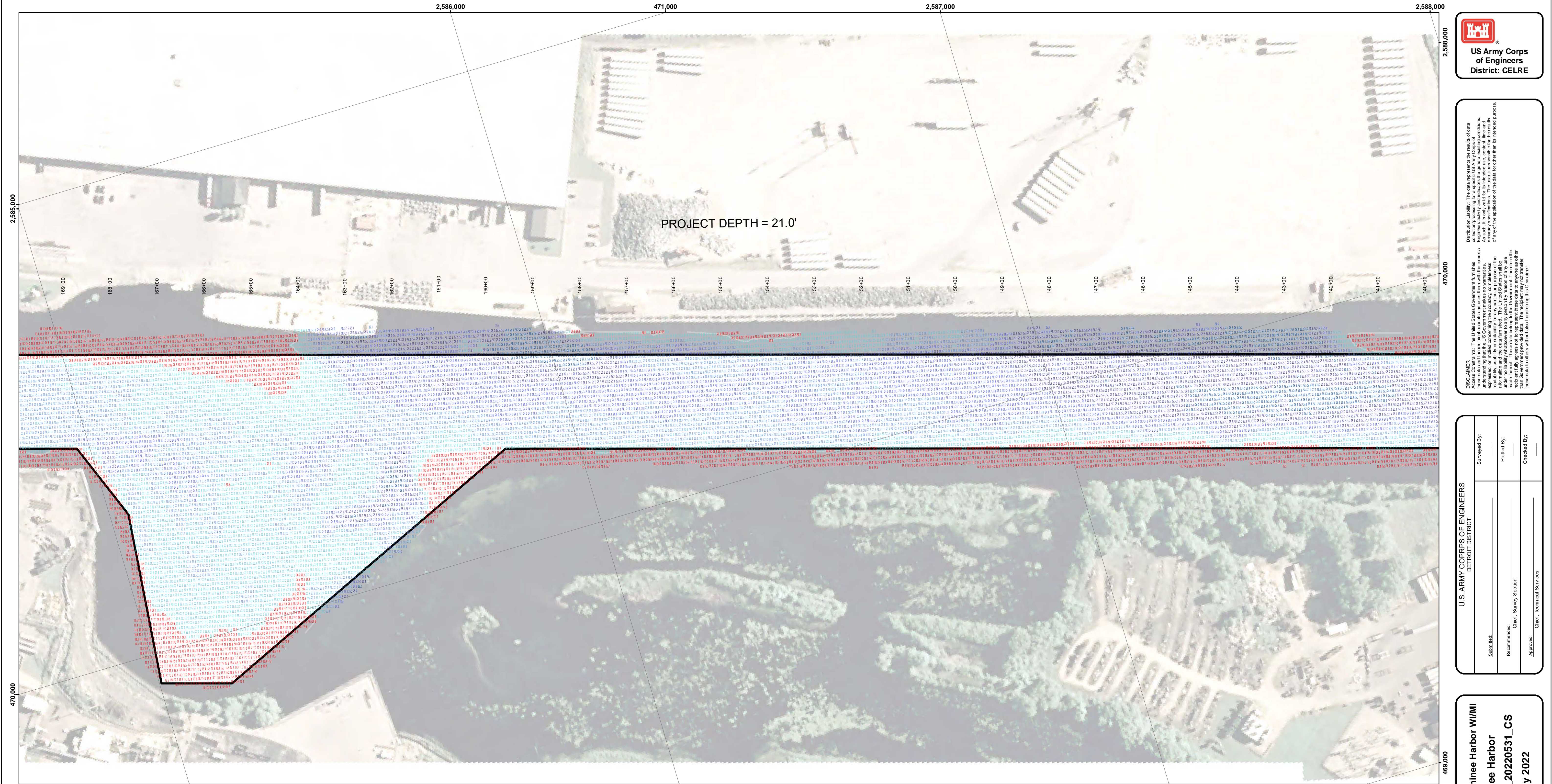
Chief, Survey Section

Approved: _____

Chief, Technical Services

Marinette - Menominee Harbor W/M/I
Menominee Harbor
ME_01_NOM_2020531_CS
31 May 2022

Sheet
Reference
Number
3 of 6



Disclaimers: The data presented in the results of data collection is for informational purposes only. The data is not intended for use in any other manner. The user is responsible for the accuracy of the data and its application. The user is responsible for the accuracy of the data and its application. The user is responsible for the accuracy of the data and its application.

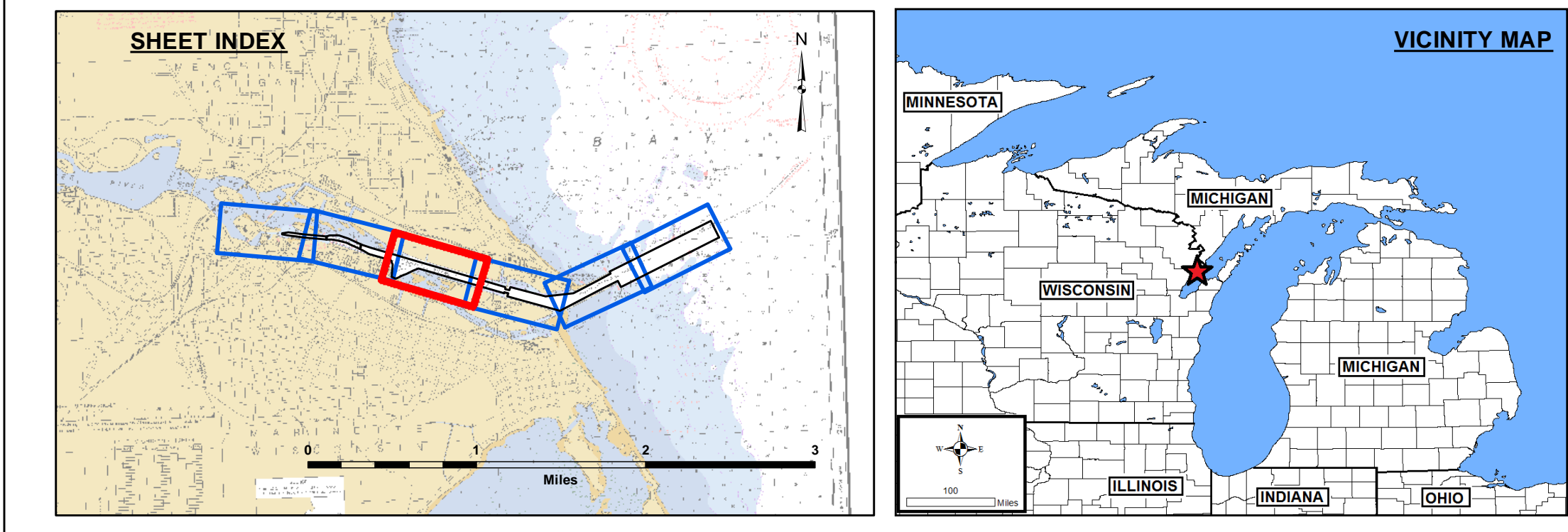
U.S. ARMY CORPS OF ENGINEERS
DETROIT DISTRICT

Surveyed By: _____
Plotted By: _____
Checked By: _____
Submitted: _____
Recommended: _____
Approved: _____
Chief, Technical Services

Marinette - Menominee Harbor W/M
Menominee Harbor
ME_01_NOM_2020531_CS
31 May 2022

Sheet
Reference
Number
4 of 6

Revision Number:
4.2 - 2020/04/30

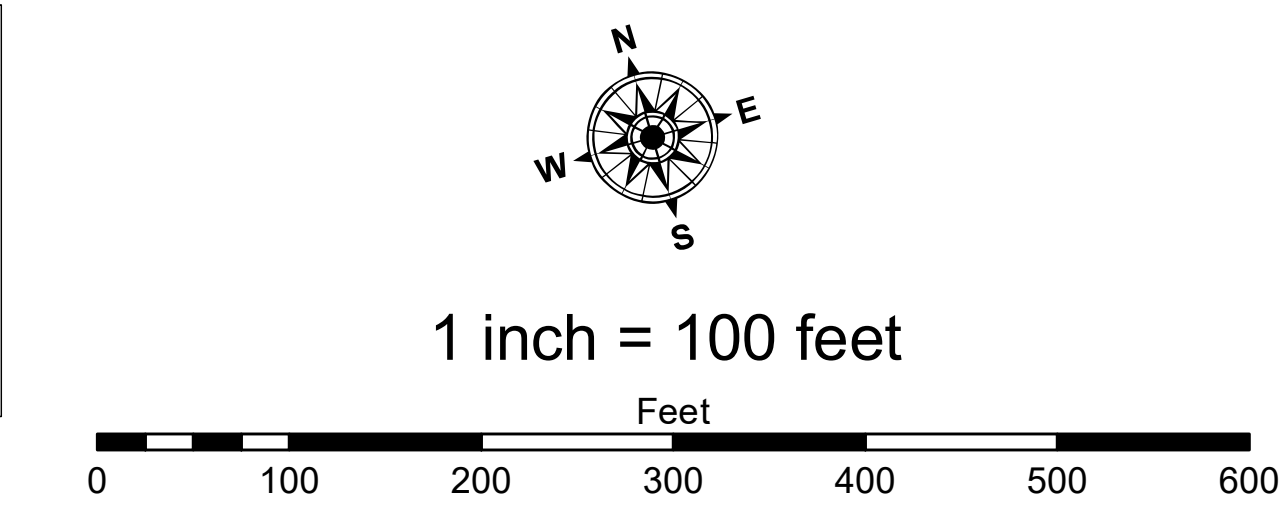


LEGEND

- Cable Submarine
- Cable Overhead
- Placement Area
- ⬇ Beacon, General
- Contour Lines
- ▭ Channel Limits
- RELOCATED CHANNEL LIMITS

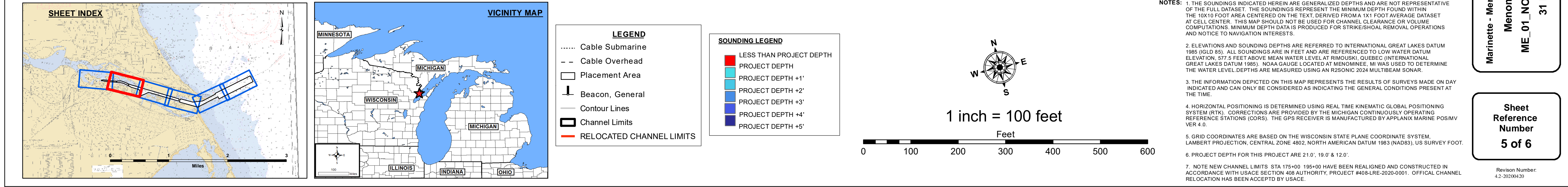
SOUNDING LEGEND

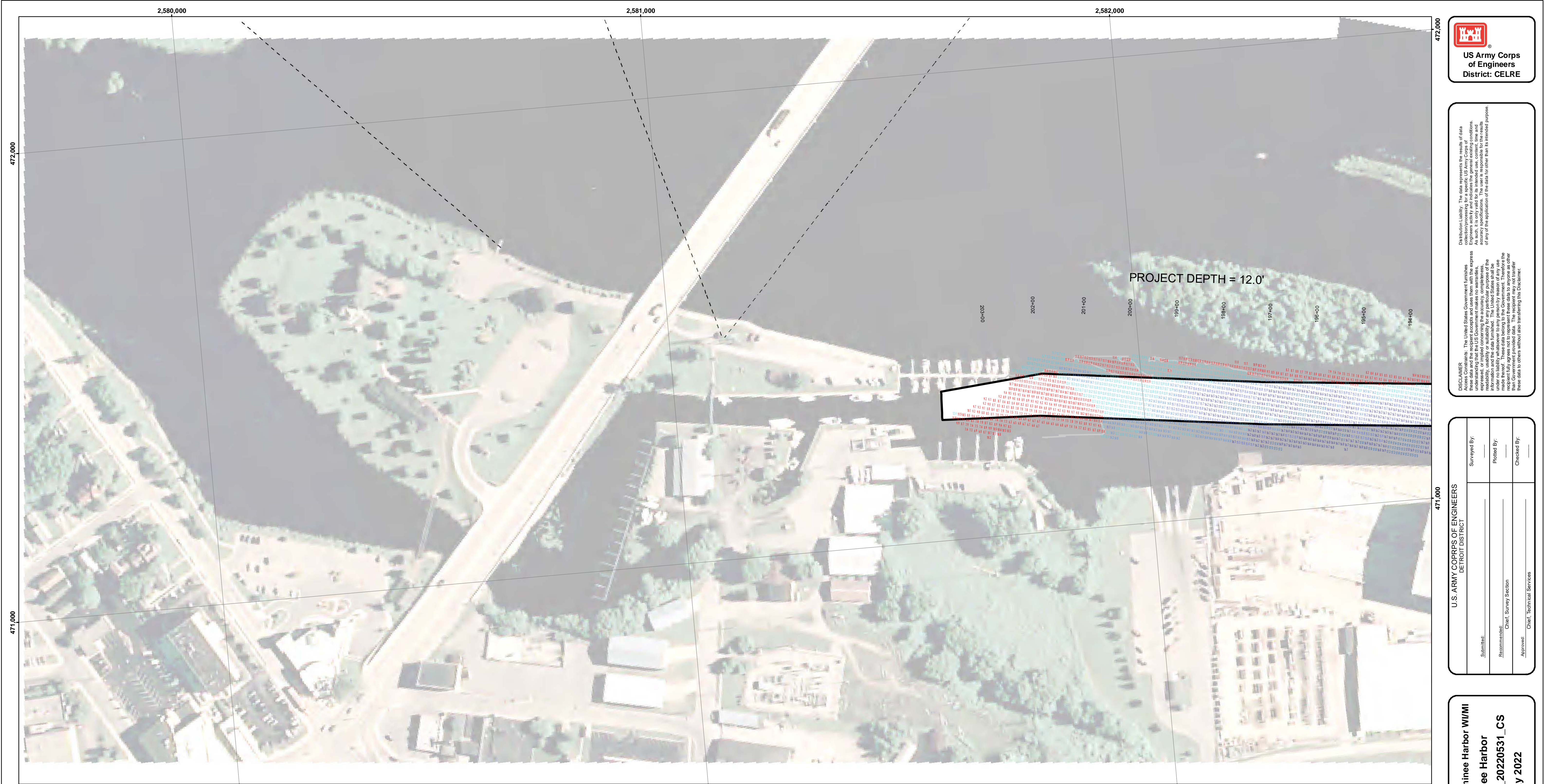
- LESS THAN PROJECT DEPTH
- PROJECT DEPTH
- PROJECT DEPTH +1'
- PROJECT DEPTH +2'
- PROJECT DEPTH +3'
- PROJECT DEPTH +4'
- PROJECT DEPTH +5'



NOTES:

1. THE SOUNDINGS INDICATED HEREIN ARE GENERALIZED DEPTHS AND ARE NOT REPRESENTATIVE OF THE FULL DATASET. THE SOUNDINGS REPRESENT THE MINIMUM DEPTH FOUND WITHIN THE 10X10 FOOT AREA CENTERED ON THE TEXT, DERIVED FROM A 1X1 FOOT AVERAGE DATASET AT CELL CENTER. THIS MAP SHOULD NOT BE USED FOR CHANNEL CLEARANCE OR VOLUME COMPUTATIONS. MINIMUM DEPTH DATA IS PRODUCED FOR STRIKESHORE REMOVAL OPERATIONS AND NOTICE TO NAVIGATION INTERESTS.
2. ELEVATIONS AND SOUNDING DEPTHS ARE REFERRED TO INTERNATIONAL GREAT LAKES DATUM 1985 (IGLD 85). ALL SOUNDINGS ARE IN FEET AND ARE REFERENCED TO LOW WATER DATUM ELEVATION, 577.5 FEET ABOVE MEAN WATER LEVEL AT RIMOUSKI, QUEBEC (INTERNATIONAL GREAT LAKES DATUM 1985). NOAA GAUGE LOCATED AT MENOMINEE, MI WAS USED TO DETERMINE THE WATER LEVEL DEPTHS ARE MEASURED USING AN RZSONIC 204 MULTIBEAM SONAR.
3. THE INFORMATION DEPICTED ON THIS MAP REPRESENTS THE RESULTS OF SURVEYS MADE ON DAY INDICATED AND CAN ONLY BE CONSIDERED AS INDICATING THE GENERAL CONDITIONS PRESENT AT THE TIME.
4. HORIZONTAL POSITIONING IS DETERMINED USING REAL TIME KINEMATIC GLOBAL POSITIONING SYSTEM (RTK). CORRECTIONS ARE PROVIDED BY THE MICHIGAN CONTINUOUSLY OPERATING REFERENCE STATIONS (CORS). THE GPS RECEIVER IS MANUFACTURED BY APPLIX MARINE POSMV VER 4.0.
5. GRID COORDINATES ARE BASED ON THE WISCONSIN STATE PLANE COORDINATE SYSTEM, LAMBERT PROJECTION, CENTRAL ZONE 4802, NORTH AMERICAN DATUM 1983 (NAD83), US SURVEY FOOT.
6. PROJECT DEPTH FOR THIS PROJECT ARE 21.0', 19.0' & 12.0'.
7. NOTE NEW CHANNEL LIMITS STA 175+00 195+00 HAVE BEEN REALIGNED AND CONSTRUCTED IN ACCORDANCE WITH USACE SECTION 408 AUTHORITY, PROJECT #408-LRE-2020-0001. OFFICIAL CHANNEL RELOCATION HAS BEEN ACCEPTED BY USACE.





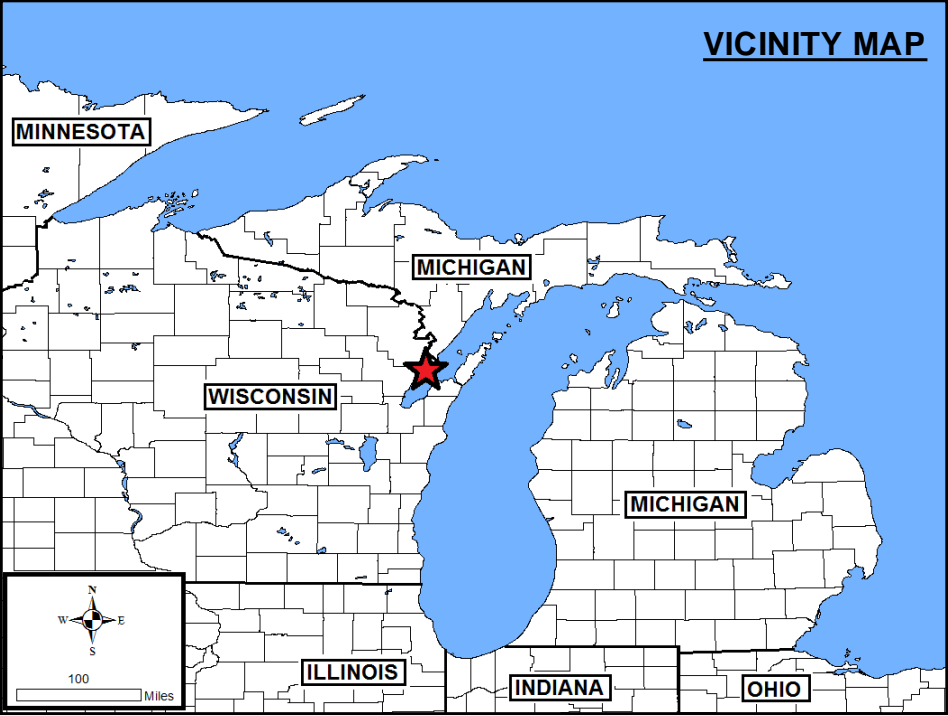
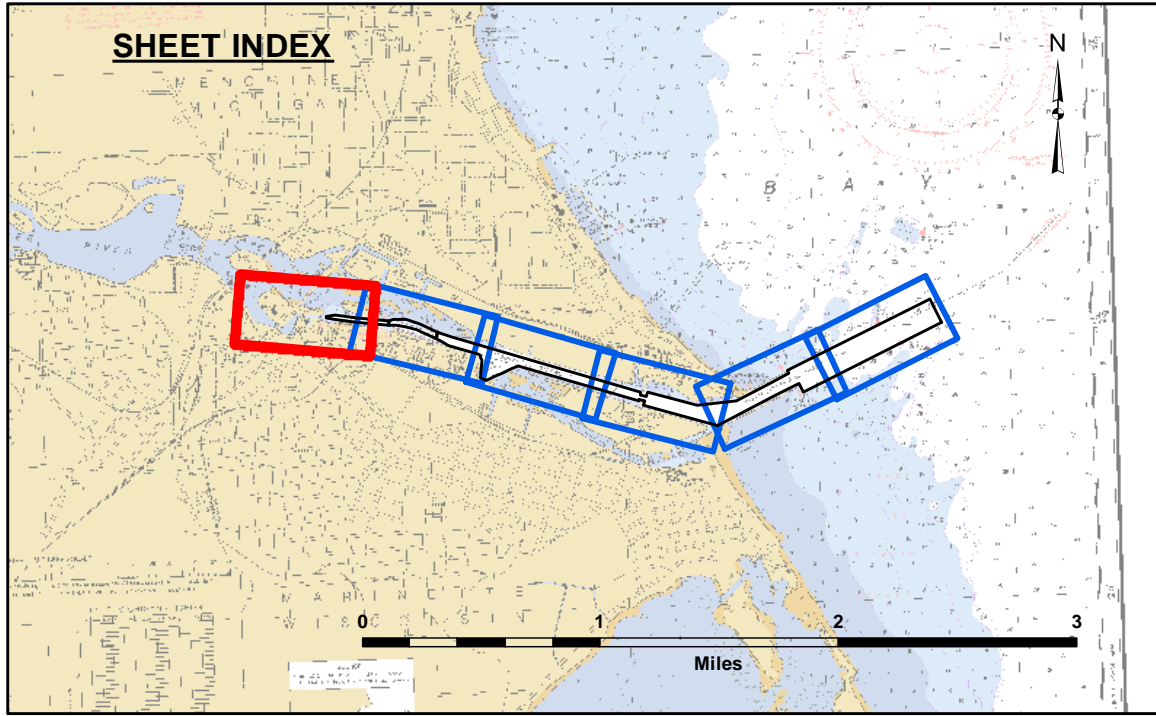
DISCLAIMER: The data presented in this map is the result of data collected by the US Army Corps of Engineers for a specific project. The data is not intended for use in any other project. The user is responsible for the results of any application of the data for other than its intended purpose. The data is not intended for use in any other project. The user is responsible for the results of any application of the data for other than its intended purpose.

U.S. ARMY CORPS OF ENGINEERS DETROIT DISTRICT		
Submitted:	Surveyed By:	
Recommended:	Plotted By:	
Approved:	Chief, Technical Services	

Marinette - Menominee Harbor W/M
Menominee Harbor
ME_01_NOM_20220531_CS
31 May 2022

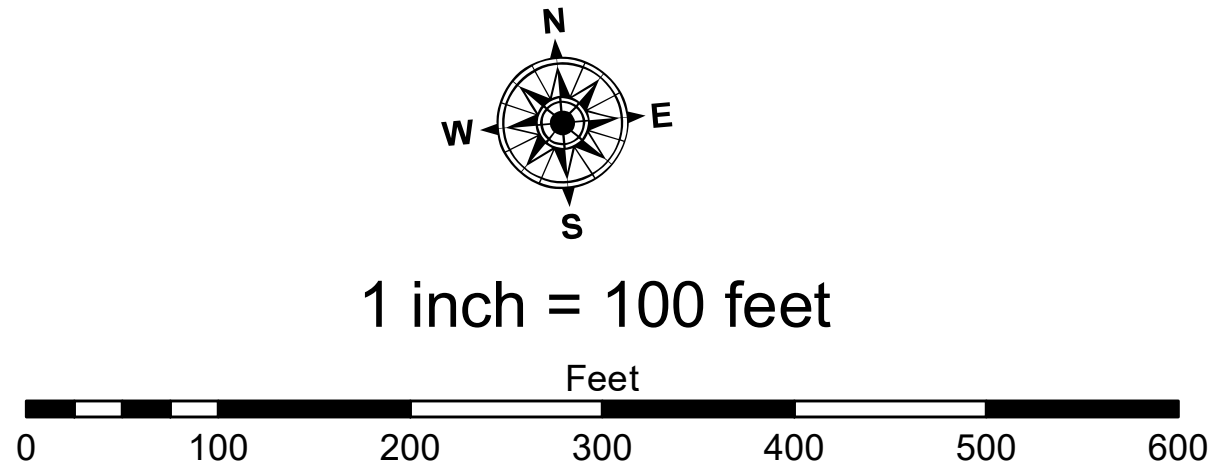
Sheet
Reference
Number
6 of 6

Revision Number:
4.2-202/004-20



- LEGEND**
- Cable Submarine
 - Cable Overhead
 - Placement Area
 - ⌋ Beacon, General
 - Contour Lines
 - ▭ Channel Limits
 - RELOCATED CHANNEL LIMITS

- SOUNDING LEGEND**
- LESS THAN PROJECT DEPTH
 - PROJECT DEPTH
 - PROJECT DEPTH +1'
 - PROJECT DEPTH +2'
 - PROJECT DEPTH +3'
 - PROJECT DEPTH +4'
 - PROJECT DEPTH +5'



NOTES:

1. THE SOUNDINGS INDICATED HEREIN ARE GENERALIZED DEPTHS AND ARE NOT REPRESENTATIVE OF THE FULL DATASET. THE SOUNDINGS REPRESENT THE MINIMUM DEPTH FOUND WITHIN THE 10X10 FOOT AREA CENTERED ON THE TEXT, DERIVED FROM A 1X1 FOOT AVERAGE DATASET AT CELL CENTER. THIS MAP SHOULD NOT BE USED FOR CHANNEL CLEARANCE OR VOLUME COMPUTATIONS. MINIMUM DEPTH DATA IS PROVIDED FOR STRIKE/SOAL REMOVAL OPERATIONS AND NOTICE TO NAVIGATION INTERESTS.

2. ELEVATIONS AND SOUNDING DEPTHS ARE REFERRED TO INTERNATIONAL GREAT LAKES DATUM 1985 (IGLD 85). ALL SOUNDINGS ARE IN FEET AND ARE REFERENCED TO LOW WATER DATUM ELEVATION, 577.5 FEET ABOVE MEAN WATER LEVEL AT RIMOUSKI, QUEBEC (INTERNATIONAL GREAT LAKES DATUM 1985). NOAA GAUGE LOCATED AT MENOMINEE, MI WAS USED TO DETERMINE THE WATER LEVEL DEPTHS ARE MEASURED USING AN RZSONIC 2024 MULTIBEAM SONAR.

3. THE INFORMATION DEPICTED ON THIS MAP REPRESENTS THE RESULTS OF SURVEYS MADE ON DAY INDICATED AND CAN ONLY BE CONSIDERED AS INDICATING THE GENERAL CONDITIONS PRESENT AT THE TIME.

4. HORIZONTAL POSITIONING IS DETERMINED USING REAL TIME KINEMATIC GLOBAL POSITIONING SYSTEM (RTK). CORRECTIONS ARE PROVIDED BY THE MICHIGAN CONTINUOUSLY OPERATING REFERENCE STATIONS (CORS). THE GPS RECEIVER IS MANUFACTURED BY APPLANIX MARINE POSMV VER 4.0.

5. GRID COORDINATES ARE BASED ON THE WISCONSIN STATE PLANE COORDINATE SYSTEM, LAMBERT PROJECTION, CENTRAL ZONE 4802, NORTH AMERICAN DATUM 1983 (NAD83), US SURVEY FOOT.

6. PROJECT DEPTH FOR THIS PROJECT ARE 21'0", 19'0" & 12'0".

7. NOTE NEW CHANNEL LIMITS. STA 175+00 - 195+00 HAVE BEEN REALIGNED AND CONSTRUCTED IN ACCORDANCE WITH USACE SECTION 408 AUTHORITY, PROJECT #408-LRE-2020-0001. OFFICIAL CHANNEL RELOCATION HAS BEEN ACCEPTED BY USACE.