

**LEGEND**

- ..... Cable Submarine
- - - Cable Overhead
- Placement Area
- ⌋ Beacon, General
- Contour Lines
- ▭ Channel Limits
- ▬ RELOCATED CHANNEL LIMITS

**SOUNDING LEGEND**

- LESS THAN PROJECT DEPTH
- PROJECT DEPTH
- PROJECT DEPTH +1'
- PROJECT DEPTH +2'
- PROJECT DEPTH +3'
- PROJECT DEPTH +4'
- PROJECT DEPTH +5'

1 inch = 100 feet

Feet

0 100 200 300 400 500 600

- NOTES:**
1. THE SOUNDINGS INDICATED HEREIN ARE GENERALIZED DEPTHS AND ARE NOT REPRESENTATIVE OF THE FULL DATASET. THE SOUNDINGS REPRESENT THE MINIMUM DEPTH FOUND WITHIN THE 10X10 FOOT AREA CENTERED ON THE TEXT, DERIVED FROM A 1X1 FOOT AVERAGE DATASET AT CELL CENTER. THIS MAP SHOULD NOT BE USED FOR CHANNEL CLEARANCE OR VOLUME COMPUTATIONS. MINIMUM DEPTH DATA IS PRODUCED FOR STRIKE/SOAL REMOVAL OPERATIONS AND NOTICE TO NAVIGATION INTERESTS.
  2. ELEVATIONS AND SOUNDING DEPTHS ARE REFERRED TO INTERNATIONAL GREAT LAKES DATUM 1985 (IGLD 85). ALL SOUNDINGS ARE IN FEET AND ARE REFERENCED TO LOW WATER DATUM ELEVATION, 577.5 FEET ABOVE MEAN WATER LEVEL AT RIMOUSKI, QUEBEC (INTERNATIONAL GREAT LAKES DATUM 1985). NOAA GAUGE LOCATED AT MENOMINEE, MI WAS USED TO DETERMINE THE WATER LEVEL DEPTHS ARE MEASURED USING AN R2SONIC 2024 MULTIBEAM SONAR.
  3. THE INFORMATION DEPICTED ON THIS MAP REPRESENTS THE RESULTS OF SURVEYS MADE ON DAY INDICATED AND CAN ONLY BE CONSIDERED AS INDICATING THE GENERAL CONDITIONS PRESENT AT THE TIME.
  4. HORIZONTAL POSITIONING IS DETERMINED USING REAL TIME KINEMATIC GLOBAL POSITIONING SYSTEM (RTK). CORRECTIONS ARE PROVIDED BY THE MICHIGAN CONTINUOUSLY OPERATING REFERENCE STATIONS (CORS). THE GPS RECEIVER IS MANUFACTURED BY APPLANIX MARINE POS/MV VER 4.0.
  5. GRID COORDINATES ARE BASED ON THE WISCONSIN STATE PLANE COORDINATE SYSTEM, LAMBERT PROJECTION, CENTRAL ZONE 4802, NORTH AMERICAN DATUM 1983 (NAD83), US SURVEY FOOT.
  6. PROJECT DEPTH FOR THIS PROJECT ARE 23.0', 21.0', 19.0' & 12.0'.
  7. SHEETS 5 & 6 OUTLINE NEW CHANNEL LIMITS WHICH ARE CURRENTLY UNDERGOING CONSTRUCTION. THIS CHANNEL LIMIT MODIFICATION IS ASSOCIATED WITH SECTION 408 PROJECT #408-LRE-2020-0001. OFFICIAL CHANNEL RELOCATION IS CURRENTLY UNDERGOING THE FINAL APPROVAL PROCESS. GREAT LAKE STAKEHOLDERS WILL BE NOTIFIED ONCE THE CHANNEL FOOTPRINT MODIFICATION IS FINAL.

  
**US Army Corps  
of Engineers**  
District: CELRE

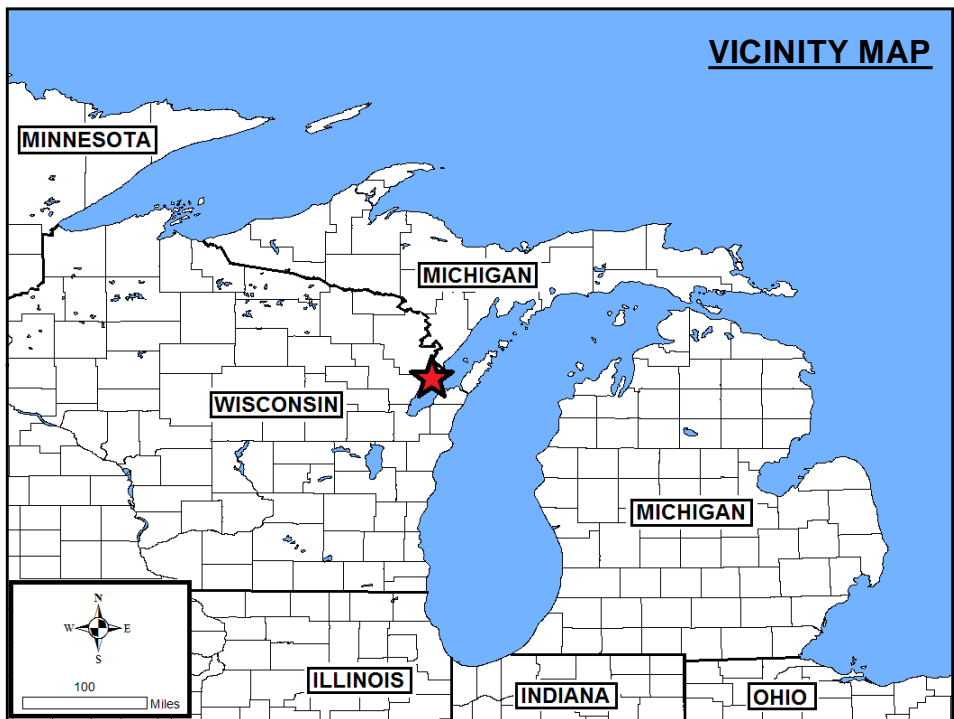
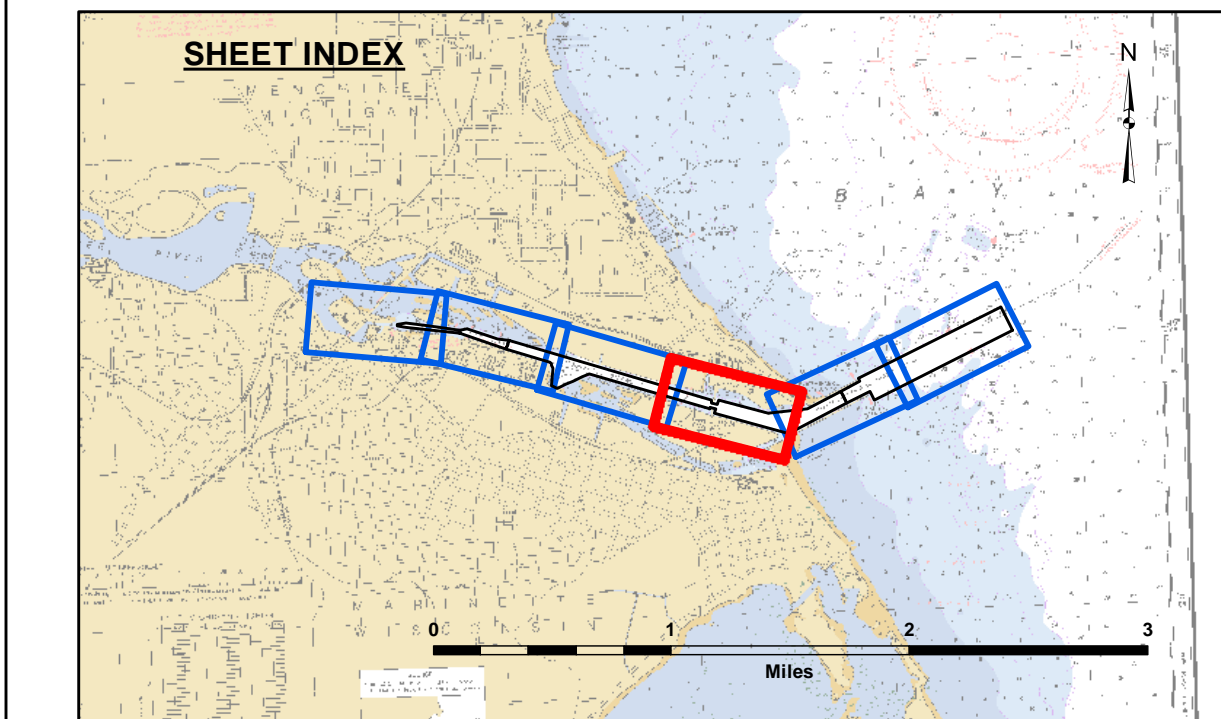
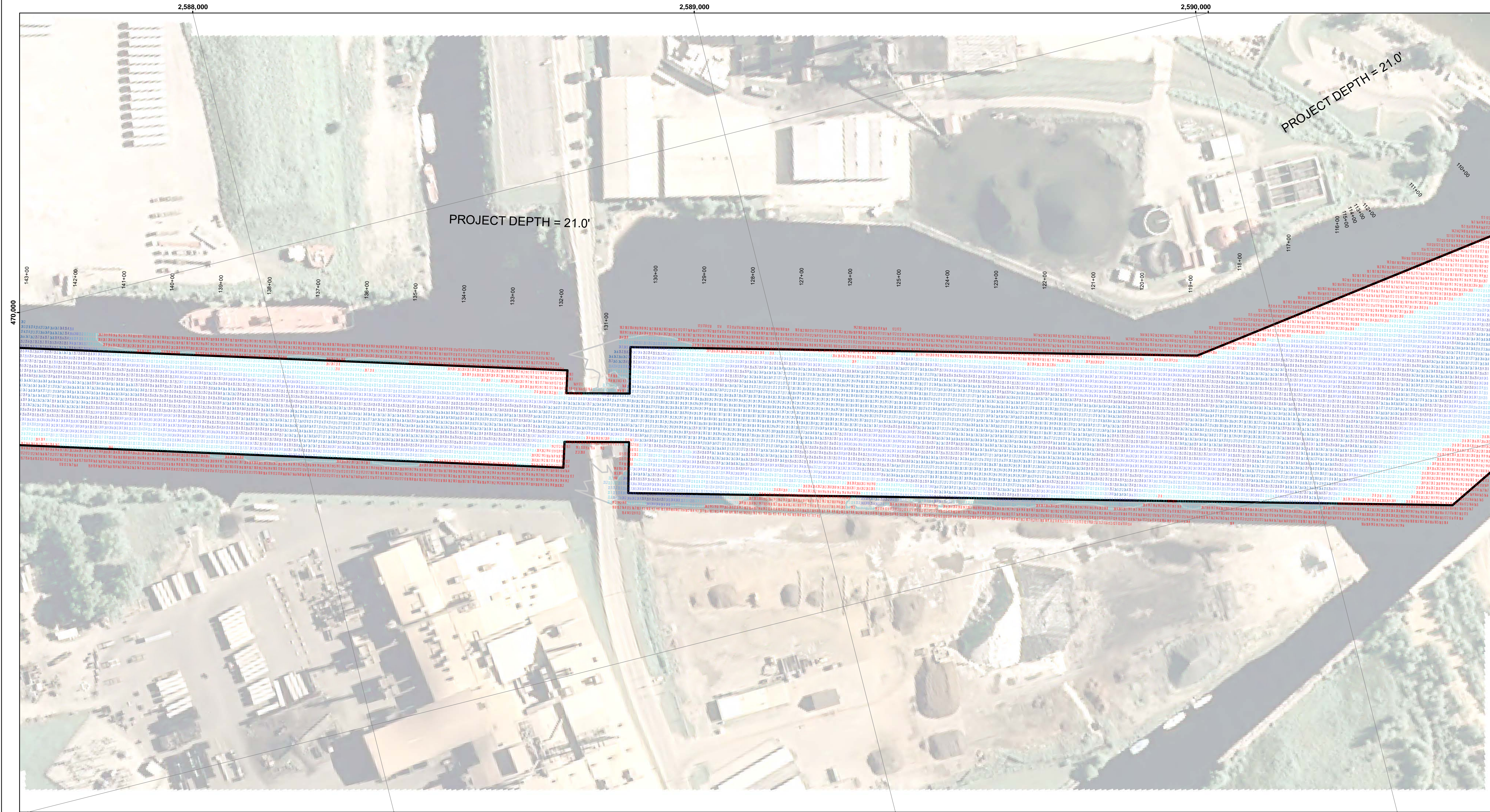
DISCLAIMER: The data presented in this map represents the results of data collection and processing for a specific US Army Corps of Engineers activity and indicates the general existing conditions. The data is not intended to be used for any other purpose, expressed, or implied concerning the accuracy, completeness, readability, usability or suitability for any particular purpose of the user. The user is responsible for the results of any of the application of the data for other than its intended purpose. The data is not intended to be used for any other purpose, expressed, or implied concerning the accuracy, completeness, readability, usability or suitability for any particular purpose of the user. The user is responsible for the results of any of the application of the data for other than its intended purpose. The data is not intended to be used for any other purpose, expressed, or implied concerning the accuracy, completeness, readability, usability or suitability for any particular purpose of the user. The user is responsible for the results of any of the application of the data for other than its intended purpose.

U.S. ARMY CORPS OF ENGINEERS DETROIT DISTRICT		
Submitted:	Surveyed By:	
Recommended:	Plotted By:	
Approved:	Chief, Survey Section	
	Chief, Technical Services	

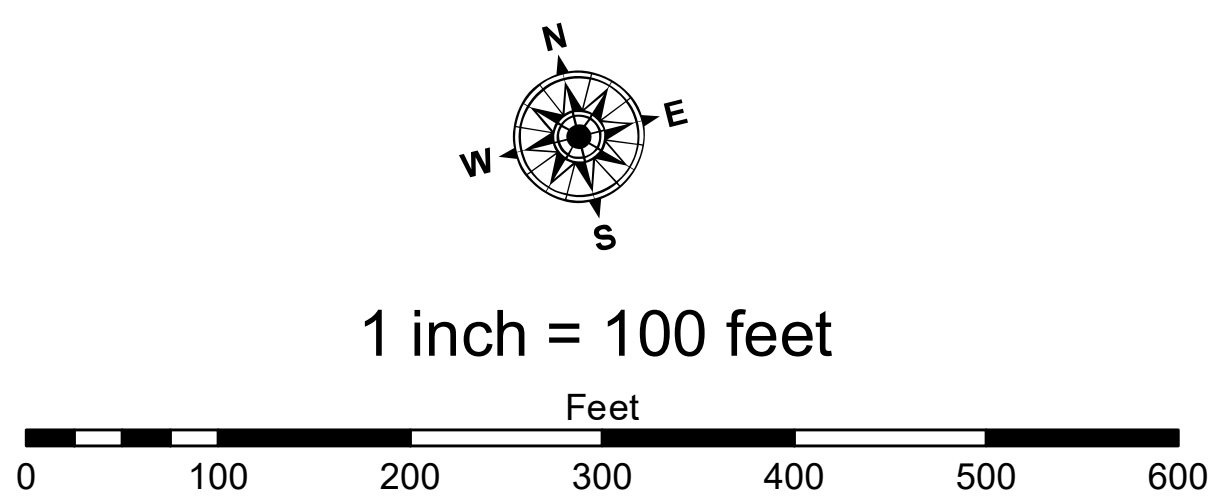
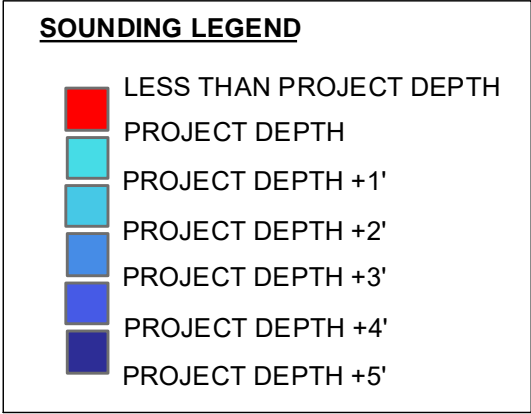
**Marquette - Menominee Harbor W/M/I**  
**Menominee Harbor**  
**ME\_01\_NOM\_20211006\_CS**  
**06 October 2021**

**Sheet  
Reference  
Number**  
**2 of 6**





- LEGEND**
- ..... Cable Submarine
  - Cable Overhead
  - Placement Area
  - ⌋ Beacon, General
  - Contour Lines
  - ▭ Channel Limits
  - RELOCATED CHANNEL LIMITS



- NOTES:**
1. THE SOUNDINGS INDICATED HEREIN ARE GENERALIZED DEPTHS AND ARE NOT REPRESENTATIVE OF THE FULL DATASET. THE SOUNDINGS REPRESENT THE MINIMUM DEPTH FOUND WITHIN THE 10X10 FOOT AIT CENTERATION ON THE TEXT, DERIVED FROM THE 1X1 FOOT AVERAGE DATASET AT CELL CENTER. THIS MAP SHOULD NOT BE USED FOR CHANNEL CLEARANCE OR VOLUME COMPUTATIONS. MINIMUM DEPTH DATA IS PRODUCED FOR STRIKE/SOAL REMOVAL OPERATIONS AND NOTICE TO NAVIGATION INTERESTS.
  2. ELEVATIONS AND SOUNDING DEPTHS ARE REFERRED TO INTERNATIONAL GREAT LAKES DATUM 1985 (IGLD 85). ALL SOUNDINGS ARE IN FEET AND ARE REFERENCED TO LOW WATER DATUM ELEVATION, 577.5 FEET ABOVE MEAN WATER LEVEL AT RIMOUSKI, QUEBEC (INTERNATIONAL GREAT LAKES DATUM 1985). NOAA GAUGE LOCATED AT MENOMINEE, MI WAS USED TO DETERMINE THE WATER LEVEL DEPTHS ARE MEASURED USING AN RZSONIC 2024 MULTIBEAM SONAR.
  3. THE INFORMATION DEPICTED ON THIS MAP REPRESENTS THE RESULTS OF SURVEYS MADE ON DAY INDICATED AND CAN ONLY BE CONSIDERED AS INDICATING THE GENERAL CONDITIONS PRESENT AT THE TIME.
  4. HORIZONTAL POSITIONING IS DETERMINED USING REAL TIME KINEMATIC GLOBAL POSITIONING SYSTEM (RTK). CORRECTIONS ARE PROVIDED BY THE MICHIGAN CONTINUOUSLY OPERATING REFERENCE STATIONS (CORS). THE GPS RECEIVER IS MANUFACTURED BY APPLANIX MARINE POSIMV VER 4.0.
  5. GRID COORDINATES ARE BASED ON THE WISCONSIN STATE PLANE COORDINATE SYSTEM, LAMBERT PROJECTION, CENTRAL ZONE 4802, NORTH AMERICAN DATUM 1983 (NAD83), US SURVEY FOOT.
  6. PROJECT DEPTH FOR THIS PROJECT ARE 23.0', 21.0', 19.0' & 12.0'.
  7. SHEETS 5 & 6 OUTLINE NEW CHANNEL LIMITS WHICH ARE CURRENTLY UNDERGOING CONSTRUCTION. THE 10X10 FOOT AIT CENTERATION IS ASSOCIATED WITH SECTION 408 PROJECT #408-RE-2020-0001. OFFICIAL CHANNEL RELOCATION IS CURRENTLY UNDERGOING THE FINAL APPROVAL PROCESS. GREAT LAKE STAKEHOLDERS WILL BE NOTIFIED ONCE THE CHANNEL FOOTPRINT MODIFICATION IS FINAL.



Public Use Liability: The data represents the results of data collection/processing for a specific US Army Corps of Engineers activity and indicates the general existing conditions, accuracy, and reliability of the data. The user is responsible for the results of any application of the data for other than its intended purpose.

Access Constraints: The United States Government furnishes these data and the recipient accepts and uses them with the express understanding that the data are not to be used for any purpose other than that for which they were provided, and that the data are not to be used for any purpose other than that for which they were provided, and that the data are not to be used for any purpose other than that for which they were provided.

Surveyed By: \_\_\_\_\_

Plotted By: \_\_\_\_\_

Checked By: \_\_\_\_\_

Submitted: \_\_\_\_\_

Recommended: \_\_\_\_\_

Approved: \_\_\_\_\_

Marinette - Menominee Harbor W/M/I

Menominee Harbor

ME\_01\_NOM\_20211006\_CS

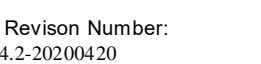
06 October 2021

Sheet Reference Number

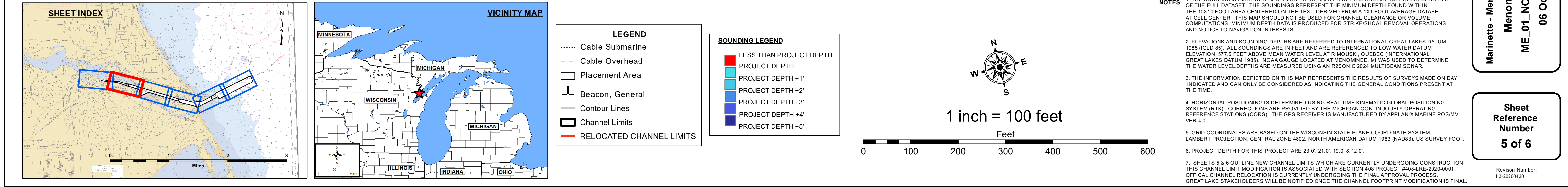
3 of 6

Revision Number: 4.2-2020/04/20

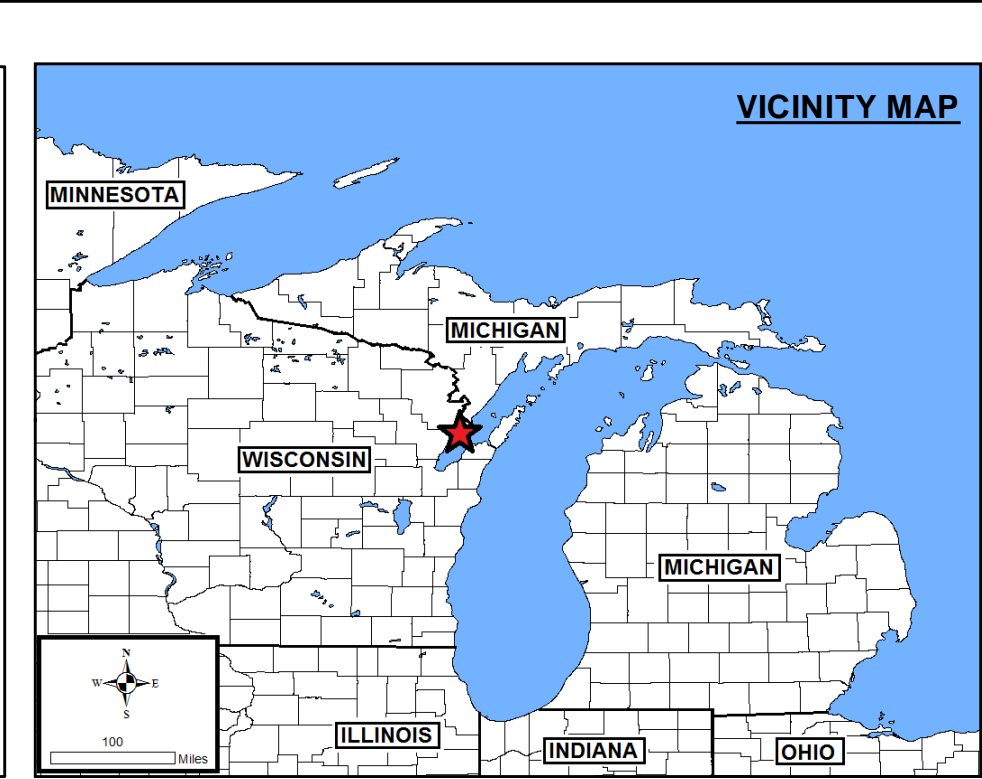
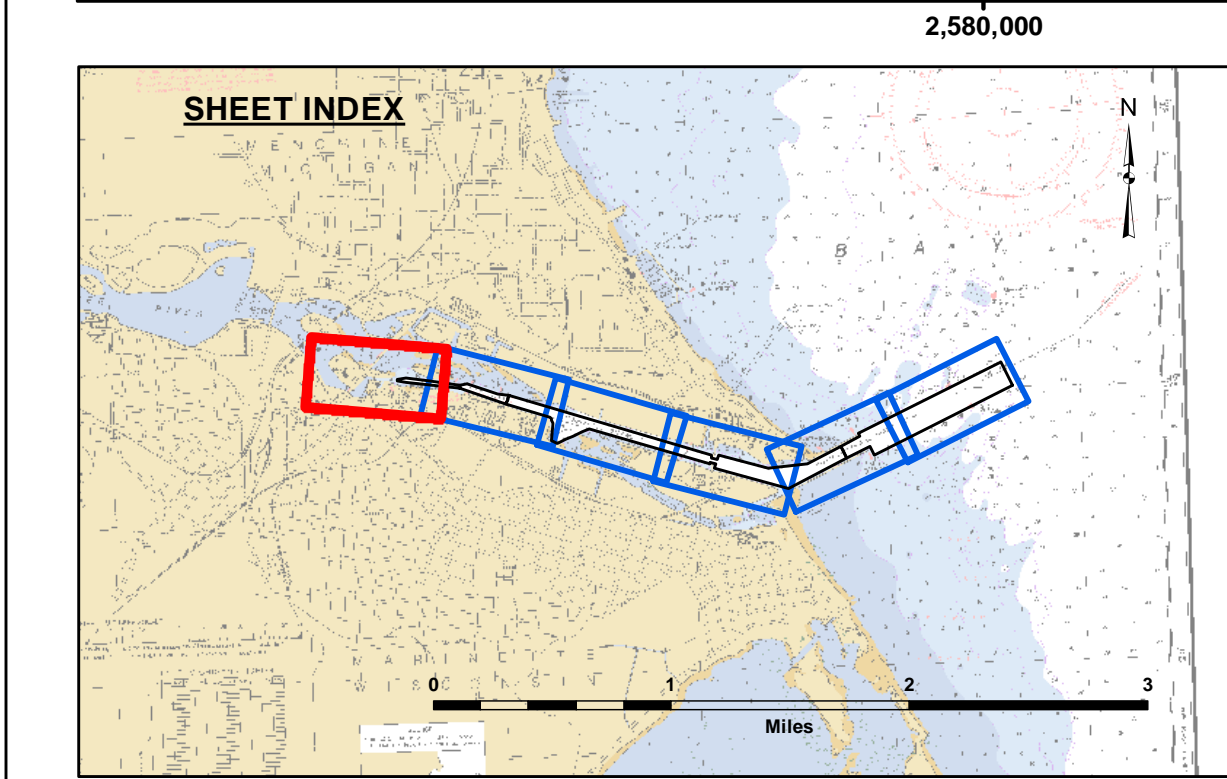
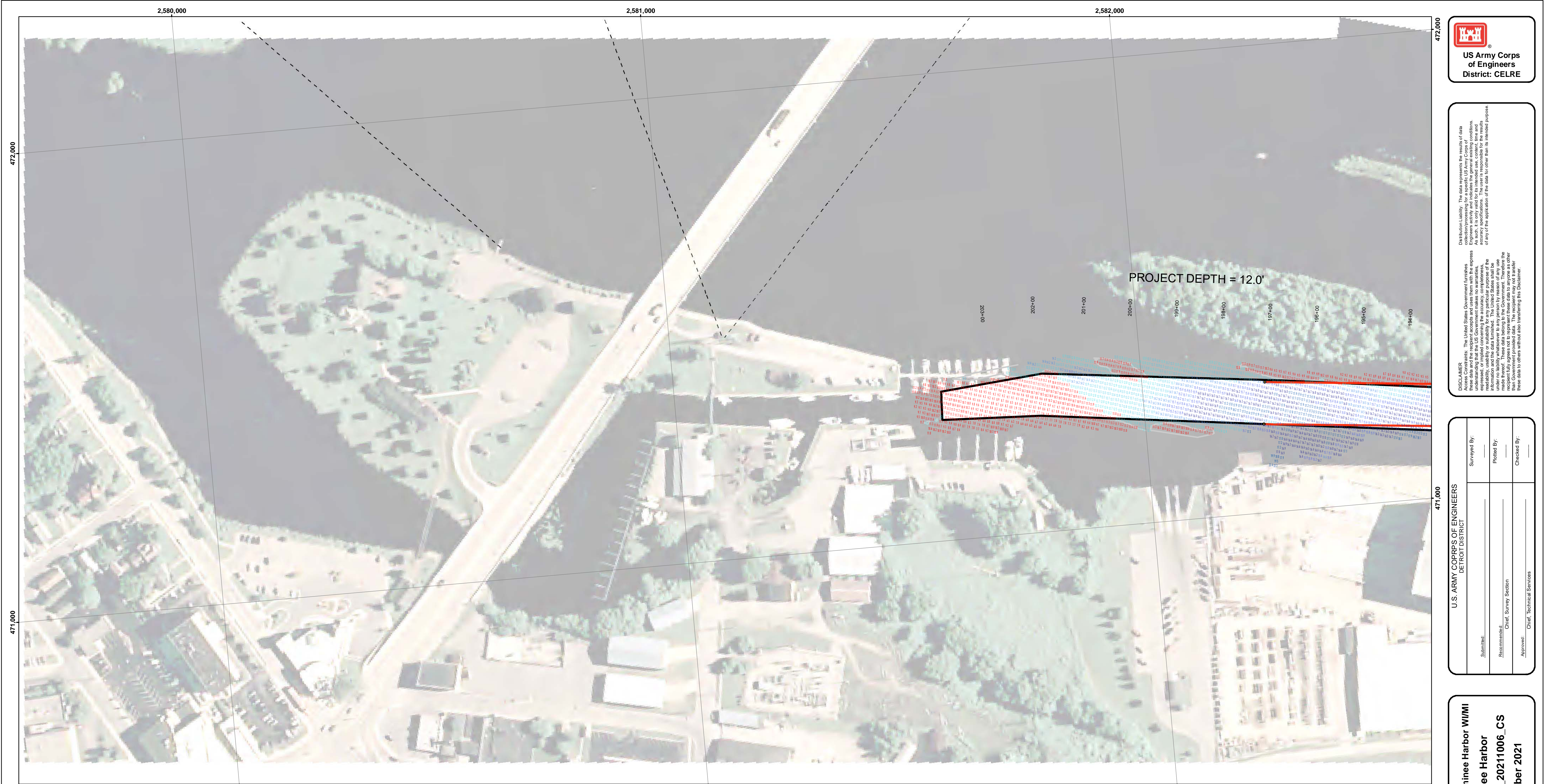












**LEGEND**

- ..... Cable Submarine
- - - Cable Overhead
- Placement Area
- ⌋ Beacon, General
- Contour Lines
- ▭ Channel Limits
- RELOCATED CHANNEL LIMITS

**SOUNDING LEGEND**

- LESS THAN PROJECT DEPTH
- PROJECT DEPTH
- PROJECT DEPTH +1'
- PROJECT DEPTH +2'
- PROJECT DEPTH +3'
- PROJECT DEPTH +4'
- PROJECT DEPTH +5'

**NOTES:**

1. THE SOUNDINGS INDICATED HEREIN ARE GENERALIZED DEPTHS AND ARE NOT REPRESENTATIVE OF THE FULL DATASET. THE SOUNDINGS REPRESENT THE MINIMUM DEPTH FOUND WITHIN THE 10X10 FOOT AREA CENTERED ON THE TEXT, DERIVED FROM A 1-FOOT AVERAGE DATASET AT CELL CENTER. THIS MAP SHOULD NOT BE USED FOR CHANNEL CLEARANCE OR VOLUME COMPUTATIONS. MINIMUM DEPTH DATA IS PRODUCED FOR STRIKE/SOAL REMOVAL OPERATIONS AND NOTICE TO NAVIGATION INTERESTS.

2. ELEVATIONS AND SOUNDING DEPTHS ARE REFERRED TO INTERNATIONAL GREAT LAKES DATUM 1985 (IGLD 85). ALL SOUNDINGS ARE IN FEET AND ARE REFERENCED TO LOW WATER DATUM ELEVATION: 577.5 FEET ABOVE MEAN WATER LEVEL AT RIMOUSKI, QUEBEC INTERNATIONAL GREAT LAKES DATUM 1985). NOAA GAUGE LOCATED AT MENOMINEE, MI WAS USED TO DETERMINE THE WATER LEVEL. DEPTHS ARE MEASURED USING AN R2SONIC 2024 MULTIBEAM SONAR.

3. THE INFORMATION DEPICTED ON THIS MAP REPRESENTS THE RESULTS OF SURVEYS MADE ON DAY INDICATED AND CAN ONLY BE CONSIDERED AS INDICATING THE GENERAL CONDITIONS PRESENT AT THE TIME.

4. HORIZONTAL POSITIONING IS DETERMINED USING REAL TIME KINEMATIC GLOBAL POSITIONING SYSTEM (RTK). CORRECTIONS ARE PROVIDED BY THE MICHIGAN CONTINUOUSLY OPERATING REFERENCE STATIONS (CORS). THE GPS RECEIVER IS MANUFACTURED BY APPLANIX MARINE POS/MV VER 4.0.

5. GRID COORDINATES ARE BASED ON THE WISCONSIN STATE PLANE COORDINATE SYSTEM, LAMBERT PROJECTION, CENTRAL ZONE 4802, NORTH AMERICAN DATUM 1983 (NAD83), US SURVEY FOOT.

6. PROJECT DEPTH FOR THIS PROJECT ARE 23.0', 21.0', 19.0' & 12.0'.

7. SHEETS 5 & 6 OUTLINE NEW CHANNEL LIMITS WHICH ARE CURRENTLY UNDERGOING CONSTRUCTION. THIS CHANNEL LIMIT MODIFICATION IS ASSOCIATED WITH SECTION 408 PROJECT #408-LR-2020-0001. OFFICIAL CHANNEL RELOCATION IS CURRENTLY UNDERGOING THE FINAL APPROVAL PROCESS. GREAT LAKE STAKEHOLDERS WILL BE NOTIFIED ONCE THE CHANNEL FOOTPRINT MODIFICATION IS FINAL.

**1 inch = 100 feet**

Feet

0 100 200 300 400 500 600

**US Army Corps of Engineers**  
District: CELRE

**DISCLAIMER:** The United States Government furnishes these data and the recipient accepts and uses them with the express understanding that the data are not to be used for any purpose other than that for which they were provided. The recipient may not transfer these data to others without transferring the Disclaimer.

**Access Constraints:** The United States Government furnishes these data and the recipient accepts and uses them with the express understanding that the data are not to be used for any purpose other than that for which they were provided. The recipient may not transfer these data to others without transferring the Disclaimer.

**U.S. ARMY CORPS OF ENGINEERS**  
DETROIT DISTRICT

Submitted:	Surveyed By:
Recommended:	Plotted By:
Approved:	Checked By:

Chief, Survey Section  
Chief, Technical Services

**Marquette - Menominee Harbor W/M/I**  
**Menominee Harbor**  
**ME\_01\_NOM\_20211006\_CS**  
**06 October 2021**

**Sheet Reference Number**  
**6 of 6**