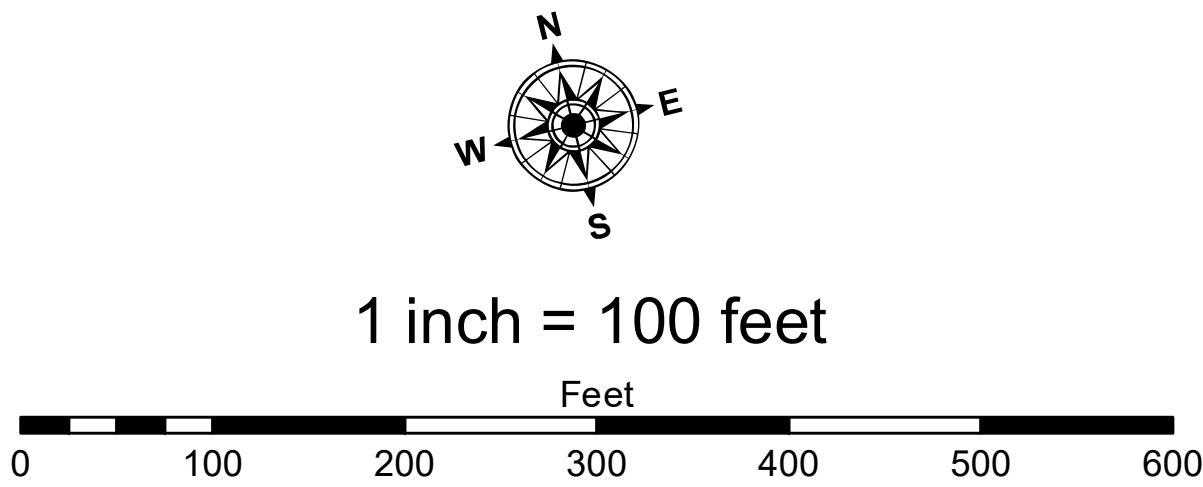


- LEGEND**
- Cable Submarine
 - Cable Overhead
 - Placement Area
 - ⊥ Beacon, General
 - Contour Lines
 - ▭ Channel Limits

- SOUNDING LEGEND**
- LESS THAN PROJECT DEPTH
 - PROJECT DEPTH
 - PROJECT DEPTH +1'
 - PROJECT DEPTH +2'
 - PROJECT DEPTH +3'
 - PROJECT DEPTH +4'
 - PROJECT DEPTH +5'



- NOTES:**
1. THE SOUNDINGS INDICATED HEREIN ARE GENERALIZED DEPTHS AND ARE NOT REPRESENTATIVE OF THE FINDINGS REPRESENT THE MINIMUM DEPTH FOUND WITHIN THE 10X10 FOOT AREA CENTERED ON THE TEXT, DERIVED FROM A 1X1 FOOT AVERAGE DATASET AT CELL CENTER. THIS MAP SHOULD NOT BE USED FOR CHANNEL CLEARANCE OR VOLUME COMPUTATIONS. MINIMUM DEPTH DATA IS PRODUCED FOR STRIKE/SHOAL REMOVAL OPERATIONS AND NOTICE TO NAVIGATION INTERESTS.
 2. ELEVATIONS AND SOUNDING DEPTHS ARE REFERRED TO INTERNATIONAL GREAT LAKES DATUM 1985 (IGLD 85). ALL SOUNDINGS ARE IN FEET AND ARE REFERENCED TO LOW WATER DATUM (ELEVATION, 577.5 FEET ABOVE MEAN WATER LEVEL AT POKOSKI, QUEBEC INTERNATIONAL GREAT LAKES DATUM 1985). NOAA GAUGE LOCATED AT MENOMINEE, MI WAS USED TO DETERMINE THE WATER LEVEL DEPTHS ARE MEASURED USING AN R2SONIC 2024 MULTIBEAM SONAR.
 3. THE INFORMATION DEPICTED ON THIS MAP REPRESENTS THE RESULTS OF SURVEYS MADE ON DAY INDICATED AND CAN ONLY BE CONSIDERED AS INDICATING THE GENERAL CONDITIONS PRESENT AT THE TIME.
 4. HORIZONTAL POSITIONING IS DETERMINED USING REAL TIME KINEMATIC GLOBAL POSITIONING SYSTEM (RTK). CORRECTIONS ARE PROVIDED BY THE MICHIGAN CONTINUOUSLY OPERATING REFERENCE STATIONS (CORS). THE GPS RECEIVER IS MANUFACTURED BY APPLANIX MARINE POSIMV VER 4.0.
 5. GRID COORDINATES ARE BASED ON THE WISCONSIN STATE PLANE COORDINATE SYSTEM, LAMBERT PROJECTION, CENTRAL ZONE 4802, NORTH AMERICAN DATUM 1983 (NAD83), US SURVEY FOOT.
 6. PROJECT DEPTH FOR THIS PRJECT ARE 23.0', 21.0', 19.0' & 12.0'.



Public Use Liability: The data represents the results of data collection and processing for a specific US Army Corps of Engineers activity and indicates the general existing conditions. The user is responsible for the accuracy, completeness, and/or implied concerning the accuracy, completeness, or reliability of the data for other than its intended purpose of any of the application of the data for other than its intended purpose.

Access Constraints: The United States Government furnishes these data and the recipient accepts and uses them with the express understanding that they are not to be used for any purpose other than that for which they were provided. The user is responsible for the accuracy, completeness, and/or implied concerning the accuracy, completeness, or reliability of the data for other than its intended purpose of any of the application of the data for other than its intended purpose.

These data are not to be used for any purpose other than that for which they were provided. The user is responsible for the accuracy, completeness, and/or implied concerning the accuracy, completeness, or reliability of the data for other than its intended purpose of any of the application of the data for other than its intended purpose.

U.S. ARMY CORPS OF ENGINEERS
DETROIT DISTRICT

Submitted: _____

Recommended: _____
Chief, Survey Section

Approved: _____
Chief, Technical Services

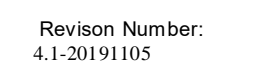
Surveyed By: _____

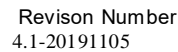
Plotted By: _____

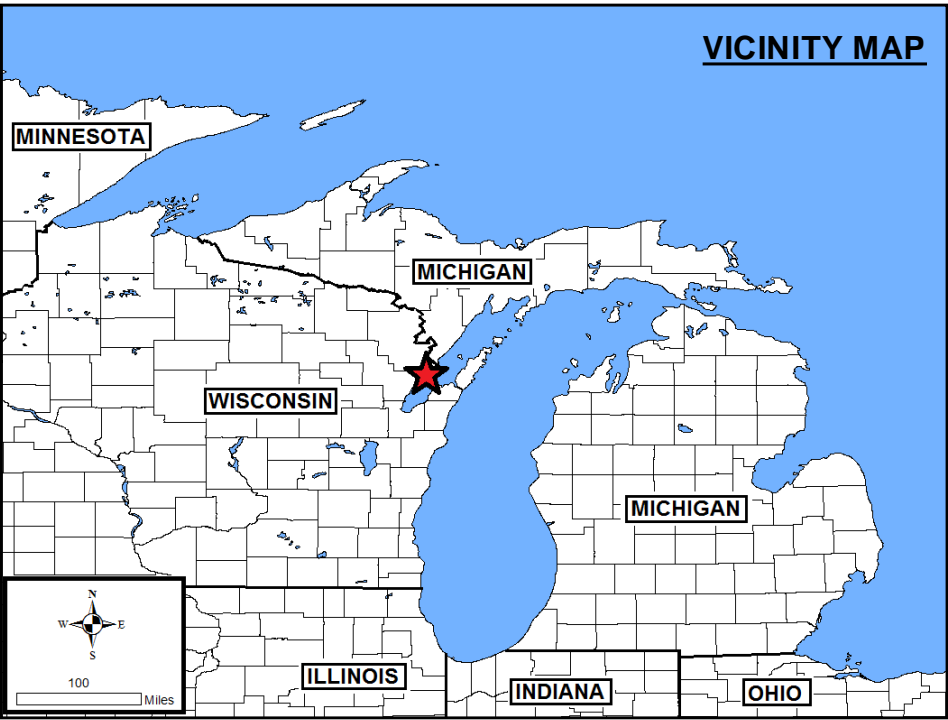
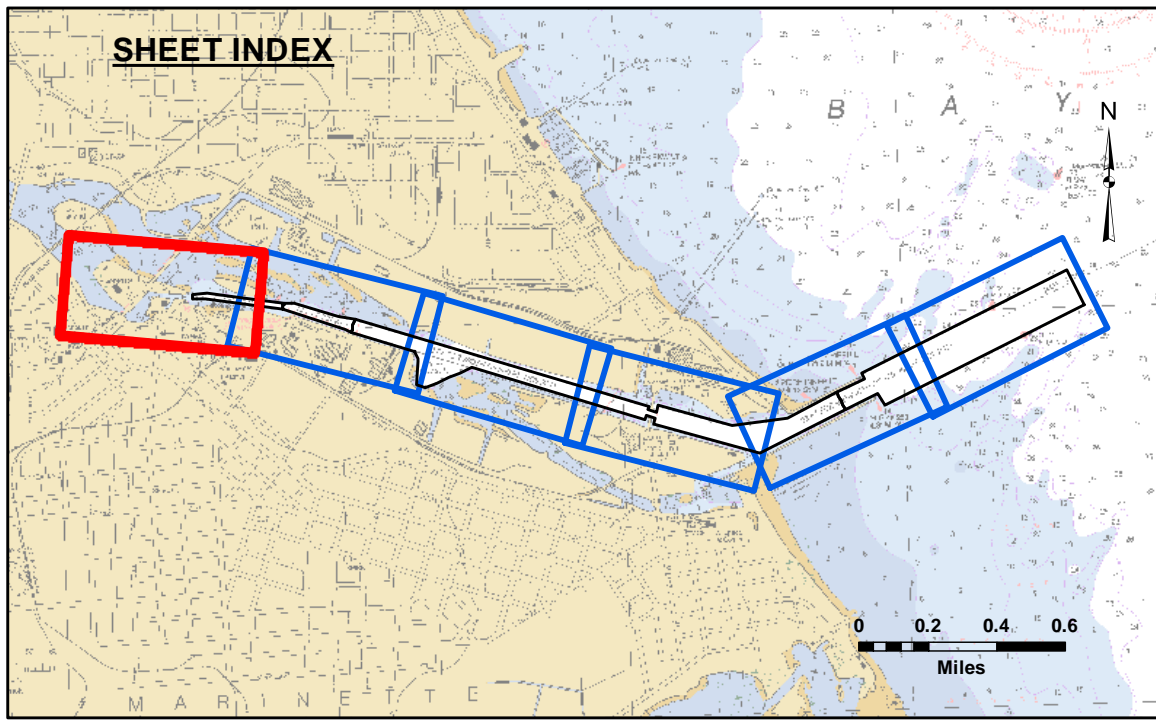
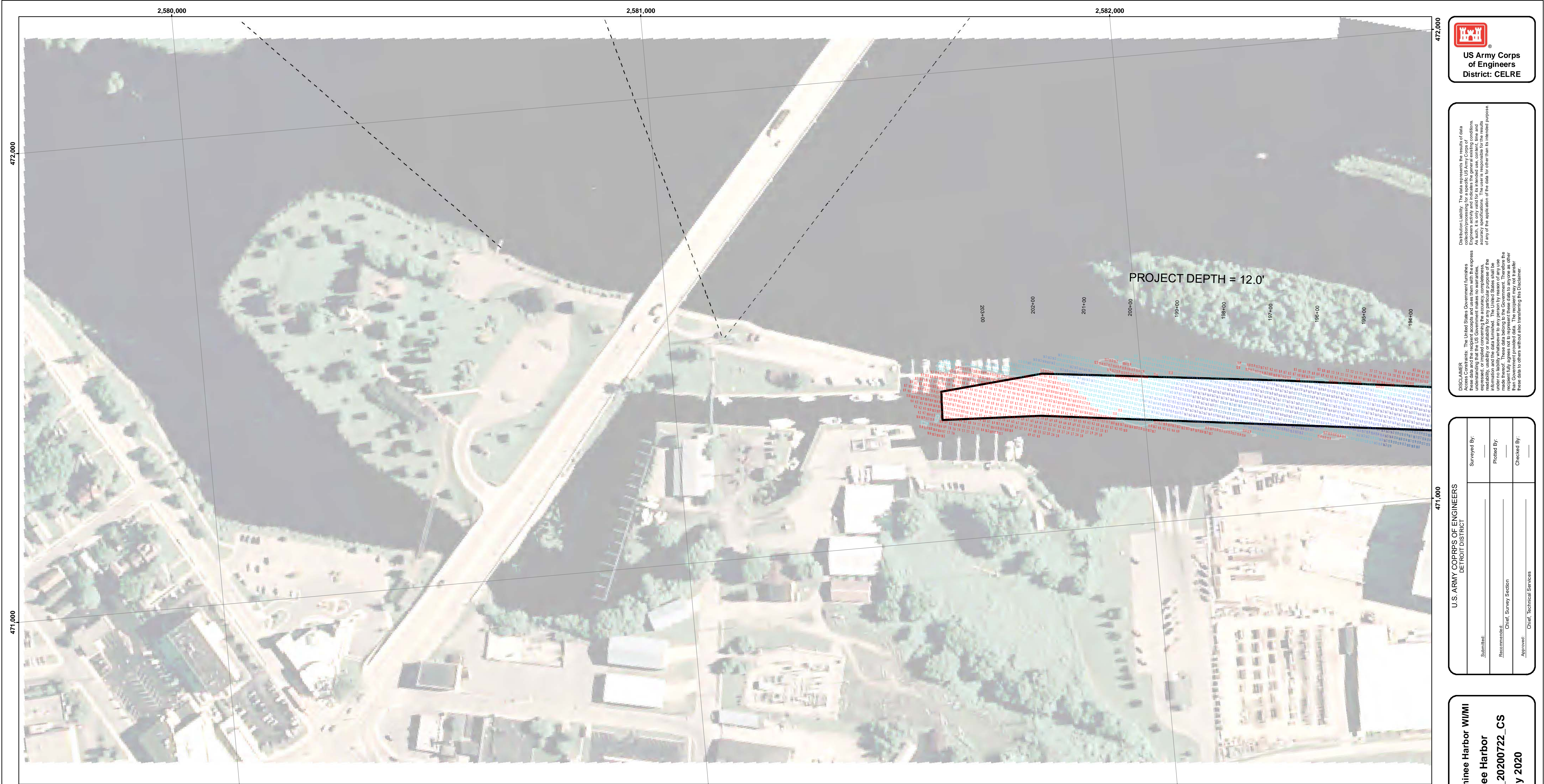
Checked By: _____

Marinette - Menominee Harbor WMMI
Menominee Harbor
ME_01_NOM_2020722_CS
22 July 2020

Sheet
Reference
Number
3 of 6

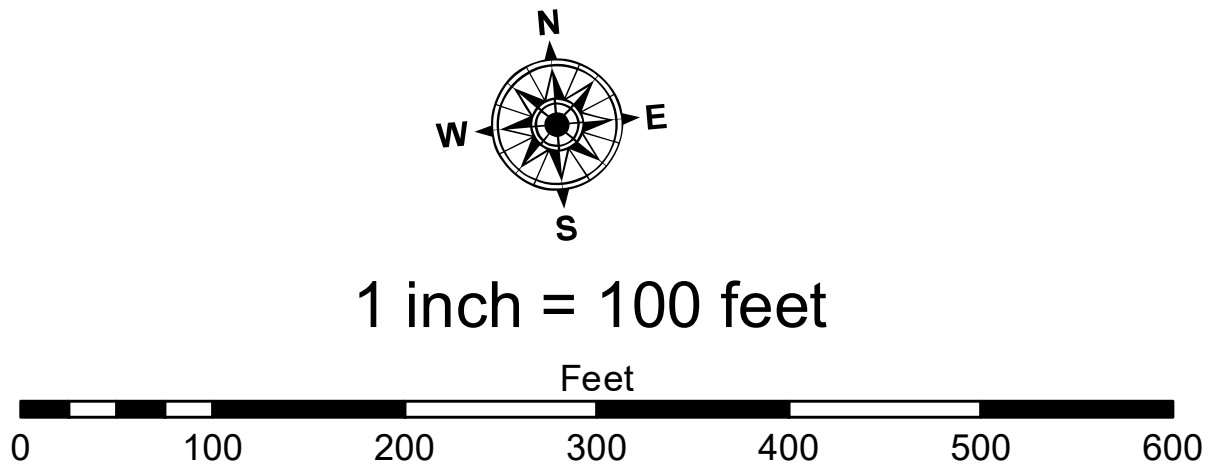






- LEGEND**
- Cable Submarine
 - Cable Overhead
 - Placement Area
 - ┆ Beacon, General
 - Contour Lines
 - ▭ Channel Limits

- SOUNDING LEGEND**
- LESS THAN PROJECT DEPTH
 - PROJECT DEPTH
 - PROJECT DEPTH +1'
 - PROJECT DEPTH +2'
 - PROJECT DEPTH +3'
 - PROJECT DEPTH +4'
 - PROJECT DEPTH +5'



- NOTES:**
1. THE SOUNDINGS INDICATED HEREIN ARE GENERALIZED DEPTHS AND ARE NOT REPRESENTATIVE OF THE FULL DATASET. THE SOUNDINGS REPRESENT THE MINIMUM DEPTHS FOUND WITHIN THE 10X10 FOOT AREA CENTERED ON THE TEXT, DERIVED FROM A 1X1 FOOT AVERAGE DATASET AT CELL CENTER. THIS MAP SHOULD NOT BE USED FOR CHANNEL CLEARANCE OR VOLUME COMPUTATIONS. MINIMUM DEPTH DATA IS PRODUCED FOR STRIKE/SOAL REMOVAL OPERATIONS AND NOTICE TO NAVIGATION INTERESTS.
 2. ELEVATIONS AND SOUNDING DEPTHS ARE REFERRED TO INTERNATIONAL GREAT LAKES DATUM 1985 (IGLD 85). ALL SOUNDINGS ARE IN FEET AND ARE REFERENCED TO LOW WATER DATUM ELEVATION, 577.5 FEET ABOVE MEAN WATER LEVEL AT RIMOUSKI, QUEBEC (INTERNATIONAL GREAT LAKES DATUM 1985). NOAA GAUGE LOCATED AT MENOMINEE, MI WAS USED TO DETERMINE THE WATER LEVEL. DEPTHS ARE MEASURED USING AN R2SONIC 2024 MULTIBEAM SONAR.
 3. THE INFORMATION DEPICTED ON THIS MAP REPRESENTS THE RESULTS OF SURVEYS MADE ON DAY INDICATED AND CAN ONLY BE CONSIDERED AS INDICATING THE GENERAL CONDITIONS PRESENT AT THE TIME.
 4. HORIZONTAL POSITIONING IS DETERMINED USING REAL TIME KINEMATIC GLOBAL POSITIONING SYSTEM (RTK). CORRECTIONS ARE PROVIDED BY THE MICHIGAN CONTINUOUSLY OPERATING REFERENCE STATIONS (CORS). THE GPS RECEIVER IS MANUFACTURED BY APPLANIX MARINE POSIMV VER 4.0.
 5. GRID COORDINATES ARE BASED ON THE WISCONSIN STATE PLANE COORDINATE SYSTEM, LAMBERT PROJECTION, CENTRAL ZONE 4802, NORTH AMERICAN DATUM 1983 (NAD83), US SURVEY FOOT.
 6. PROJECT DEPTH FOR THIS PRPJECT ARE 23.0', 21.0', 19.0' & 12.0'.

Marinette - Menominee Harbor W/M/I
Menominee Harbor
ME_01_NOM_20200722_CS
22 July 2020

Sheet
Reference
Number
6 of 6

U.S. ARMY CORPS OF ENGINEERS
DETROIT DISTRICT

Submitted:	Surveyed By:
Recommended:	Plotted By:
Approved:	Checked By:

Chief, Survey Section
Chief, Technical Services

DISCLAIMER: The data presented in this map is the result of data collection and processing for a specific purpose. The U.S. Army Corps of Engineers actively and continuously maintains the general existing conditions of the project area. The data is not intended to be used for any purpose other than the intended purpose of the application of the data for other than its intended purpose. The user is responsible for the results of any application of the data for other than its intended purpose.

ACCESS CONSTRAINTS: The United States Government furnishes these data and the recipient accepts and uses them with the express understanding that the data are not to be used for any purpose other than the intended purpose of the application of the data for other than its intended purpose. The user is responsible for the results of any application of the data for other than its intended purpose. The user is responsible for the results of any application of the data for other than its intended purpose.

