

NOTES:

SURVEY CONTROL AND BENCH MARK DATA IS AVAILABLE FROM THE DETROIT DISTRICT, ENGINEERING & TECHNICAL SERVICES, OPERATIONS TECHNICAL SUPPORT BRANCH, LAKE MICHIGAN AREA OFFICE, KEWAUNEE SUB-OFFICE.

THE COORDINATE GRID SYSTEM SHOWN IS REFERENCED TO THE WISCONSIN STATE PLANE COORDINATE SYSTEM, LAMBERT PROJECTION, CENTRAL ZONE 4802, NORTH AMERICAN DATUM 1983 (NAD83), US SURVEY FOOT.

ALL SOUNDINGS ARE IN FEET AND ARE REFERENCED TO LOW WATER DATUM ELEVATION, 57.5 FEET ABOVE MEAN WATER LEVEL AT RIMOUSKI, QUEBEC (INTERNATIONAL GREAT LAKES DATUM 1985).

PROJECT DEPTHS FOR THIS AREA ARE 21.0' & 23.0'.

THE INFORMATION DEPICTED ON THIS MAP REPRESENTS THE RESULTS OF SURVEYS MADE ON THE DATES INDICATED AND CAN ONLY BE CONSIDERED AS INDICATING THE GENERAL CONDITIONS AT THAT TIME.

THE SOUNDINGS INDICATED HERE IN ARE GENERALIZED DEPTHS AND ARE NOT REPRESENTATIVE OF THE FULL DATA SET. THE SOUNDINGS REPRESENT THE MINIMUM DEPTH FOUND WITHIN THE 10'X10' AREA CENTERED ON THE TEXT, DERIVED FROM A 1'X1' AVERAGE DATA SET AT CELL CENTER. THIS MAP SHOULD NOT BE USED FOR CHANNEL CLEARANCE OR VOLUME COMPUTATIONS. MINIMUM DEPTH DATA IS PRODUCED FOR STRIKE/SOAL REMOVAL OPERATIONS AND NOTICE TO NAVIGATION INTERESTS.

THE SURVEY SHOWN WAS CONDUCTED BY THE LAKE MICHIGAN AREA OFFICE, KEWAUNEE SUB OFFICE SURVEY PARTY ON 05 NOVEMBER 2019, USING A R2SONIC 2026 MULTIBEAM ECHOSOUNDER, AN I2NS TYPE 1 WITH RTK CORRECTIONS FOR MOTION COMPENSATION AND POSITIONING, HYPACK 2018, AND SURVEY VESSEL LAUNCH 3059.

NOAA GAUGE LOCATED AT MENOMINEE, MI WAS USED TO DETERMINE THE WATER LEVEL.

COORDINATE TABLE

STA.	DESCRIPTION	NORTHING	EASTING
1	CHANNEL PT.	471170.254	2595243.240
2	DO.	471705.979	2594973.211
3	DO.	469622.096	2592171.741
4	DO.	470116.415	2591819.564
5	DO.	469809.596	2592077.234
6	DO.	470036.080	2591880.071
7	DO.	468896.001	2590284.692
A	CENTERLINE PT.	471491.688	2585081.223
B	DO.	469055.682	2590248.258

21' LEGEND

0.0'	21.0'	22.0'	23.0'	24.0'	24.0'	>24.0'
------	-------	-------	-------	-------	-------	--------

23' LEGEND

0.0'	23.0'	24.0'	25.0'	26.0'	>26.0'
------	-------	-------	-------	-------	--------

LOCATION MAP

U.S. ARMY CORPS OF ENGINEERS
DETROIT DISTRICT
477 MICHIGAN AVE
DETROIT, MI 48226

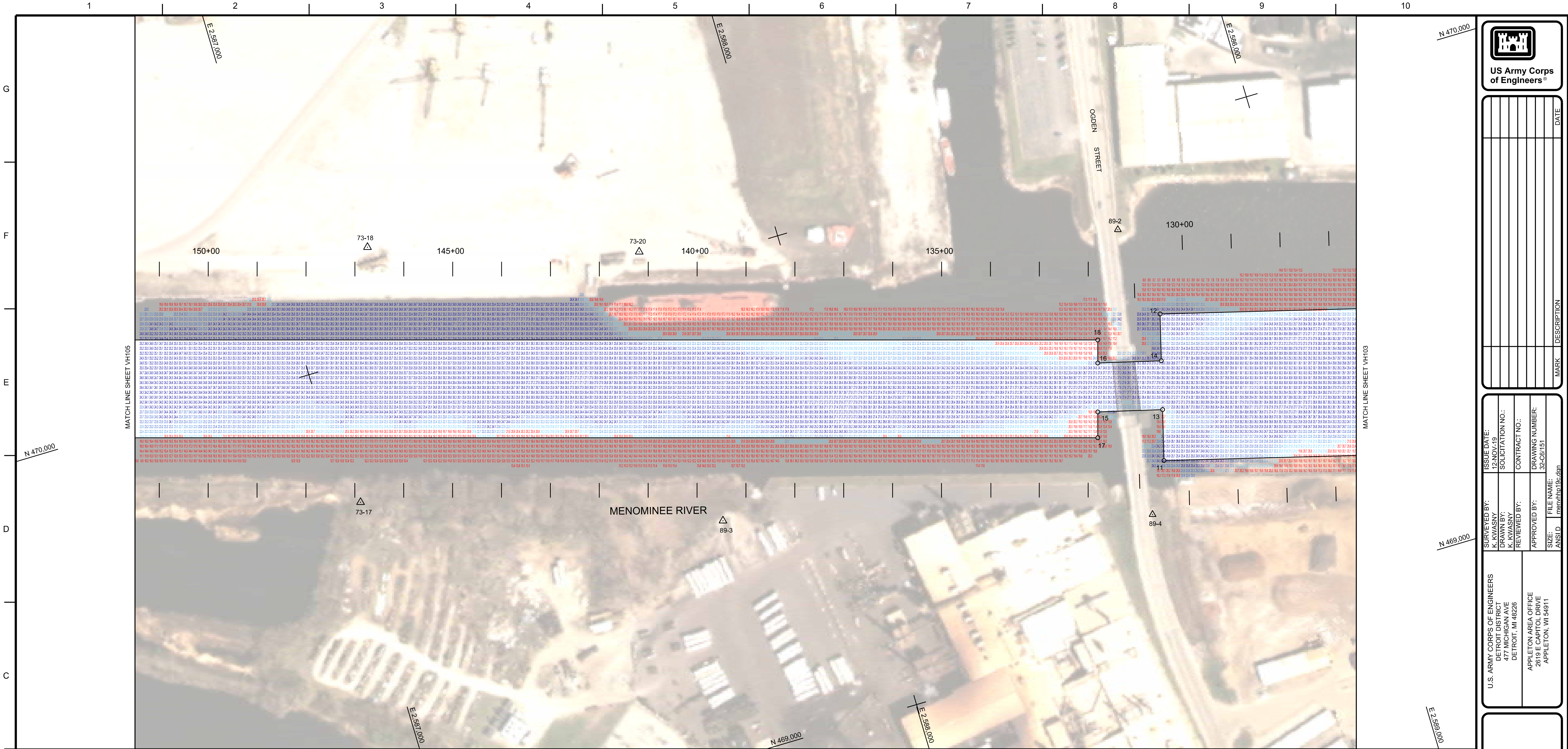
ISSUE DATE:
12-NOV-19
SOLICITATION NO.:
CONTRACT NO.:
DRAWING NUMBER:
FILE NAME:
SIZE:
ANSID:

APPROVED BY:
REVIEWED BY:
DRAWN BY:
SURVEYED BY:

MAINTENANCE/HARBOR
WISCONSIN/MICHIGAN

CONDITION OF CHANNEL
NOVEMBER 2019

SHEET ID
VH102



NOTES:

SURVEY CONTROL AND BENCH MARK DATA IS AVAILABLE FROM THE DETROIT DISTRICT, ENGINEERING & TECHNICAL SERVICES, OPERATIONS TECHNICAL SUPPORT BRANCH, LAKE MICHIGAN AREA OFFICE, KEWAUNEE SUB-OFFICE.

THE COORDINATE GRID SYSTEM SHOWN IS REFERENCED TO THE WISCONSIN STATE PLANE COORDINATE SYSTEM, LAMBERT PROJECTION, CENTRAL ZONE 4802, NORTH AMERICAN DATUM 1983 (NAD83), US SURVEY FOOT.

ALL SOUNDINGS ARE IN FEET AND ARE REFERENCED TO LOW WATER DATUM ELEVATION, 577.5 FEET ABOVE MEAN WATER LEVEL AT RIMOUSH, QUEBEC (INTERNATIONAL GREAT LAKES DATUM 1985).

PROJECT DEPTH FOR THIS AREA IS 21'0".

THE INFORMATION DEPICTED ON THIS MAP REPRESENTS THE RESULTS OF SURVEYS MADE ON THE DATES INDICATED AND CAN ONLY BE CONSIDERED AS INDICATING THE GENERAL CONDITIONS AT THAT TIME.

THE SOUNDINGS INDICATED HERE IN ARE GENERALIZED DEPTHS AND ARE NOT REPRESENTATIVE OF THE FULL DATA SET. THE SOUNDINGS REPRESENT THE MINIMUM DEPTH FOUND WITHIN THE 10'X10' AREA CENTERED ON THE TEXT, DERIVED FROM A 1'X1' AVERAGE DATA SET AT CELL CENTER. THIS MAP SHOULD NOT BE USED FOR CHANNEL CLEARANCE OR VOLUME COMPUTATIONS. MINIMUM DEPTH DATA IS PRODUCED FOR STRIKE/SHOAL REMOVAL OPERATIONS AND NOTICE TO NAVIGATION INTERESTS.

THE SURVEY SHOWN WAS CONDUCTED BY THE LAKE MICHIGAN AREA OFFICE, KEWAUNEE SUB OFFICE SURVEY PARTY ON 05 NOVEMBER 2019, USING A R2SONIC 2026 MULTIBEAM ECHOSOUNDER, AN I2NS TYPE I WITH RTK CORRECTIONS FOR MOTION COMPENSATION AND POSITIONING, HYPACK 2018, AND SURVEY VESSEL LAUNCH 3059.

NOAA GAUGE LOCATED AT MENOMINEE, MI WAS USED TO DETERMINE THE WATER LEVEL.

21' LEGEND

0.0'

21.0'

22.0'

23.0'

24.0'

>24.0'

COORDINATE TABLE

STA.	DESCRIPTION	NORTHING	EASTING
15	CHANNEL PT.	469468.523	2588525.581
16	DO	469564.451	2588554.014
17	DO	469417.805	2588510.549
18	DO	469609.539	2588567.379
19	DO	470206.804	2585848.640
21	DO	469893.233	2585147.360
30	DO	470945.904	2584058.780
C	CENTERLINE PT.	469497.530	2588599.033
D	DO.	470851.566	2584030.815

LOCATION MAP

US ARMY CORPS OF ENGINEERS

U.S. ARMY CORPS OF ENGINEERS
DETROIT DISTRICT
477 MICHIGAN AVE
DETROIT, MI 48226

ISSUE DATE:
12-NOV-19

SOLICITATION NO.:
477 MICHIGAN AVE

CONTRACT NO.:
32-C6/051

DRAWING NUMBER:
32-C6/051

FILE NAME:
menh100.dgn

MATCH LINE SHEET VH103

CONDITION OF CHANNEL
NOVEMBER 2019

SHEET ID
VH104

