

**LEGEND**

- ..... Cable Submarine
- - Cable Overhead
- Channel\_Limits
- Beacon, General
- Contour Lines
- Channel\_Limits

**SOUNDING LEGEND**

- LESS THAN PROJECT DEPTH
- PROJECT DEPTH
- PROJECT DEPTH +1'
- PROJECT DEPTH +2'
- PROJECT DEPTH +3'
- PROJECT DEPTH +4'
- PROJECT DEPTH +5'

1 inch = 100 feet

Feet

0 100 200 300 400 500 600

**NOTES:**

THE INFORMATION DEPICTED ON THIS MAP REPRESENTS THE RESULTS OF THE SURVEYS MADE ON THE DATES INDICATED AND CAN ONLY BE CONSIDERED AS INDICATING THE GENERAL CONDITIONS EXISTING AT THAT TIME.

ALL DEPTHS AND PROJECT DEPTHS ARE REFERRED TO LOW WATER DATUM ELEVATION 577.5 FT. ABOVE MEAN WATER LEVEL, I.G.L.D. 1985.

HYDRAULIC CORRECTOR OF 0.3' APPLIED

GRIDS SHOWN ARE BASED ON THE NATIONAL GEODETIC SURVEY PROJECTION TABLES, STATE OF MICHIGAN, CENTRAL ZONE (2112), LAMBERT PROJECTION, 1983 NORTH AMERICAN DATUM, US SURVEY FOOT.

PROJECT DEPTHS: 30.0' 29.5' and 29.0' FOR MAIN CHANNEL.  
18.0' TURNING BASIN (AS NOTED)

POSITION SYSTEM: Applanix POSMV WITH FUGRO MARINESTAR GNSS  
SONIC SOUNDER: ODOM CV-300  
TRANSDUCER: 200 KHZ WITH 4.0 DEGREE BEAM ANGLE

WATER LEVEL ELEVATIONS (GAGE) OBTAINED DURING THE SURVEY WERE FROM THE NOAA GAGE STATION.

2010 AERIAL PHOTOGRAPHY DATA SOURCE: USGS

  
**US Army Corps of Engineers**  
District: CELRE

**DISCLAIMER:** The data represented by the results of data collection is for informational purposes only. The U.S. Army Corps of Engineers does not warrant the accuracy, completeness, or reliability of the data. The user is responsible for the results of any application of the data for other than its intended purpose.

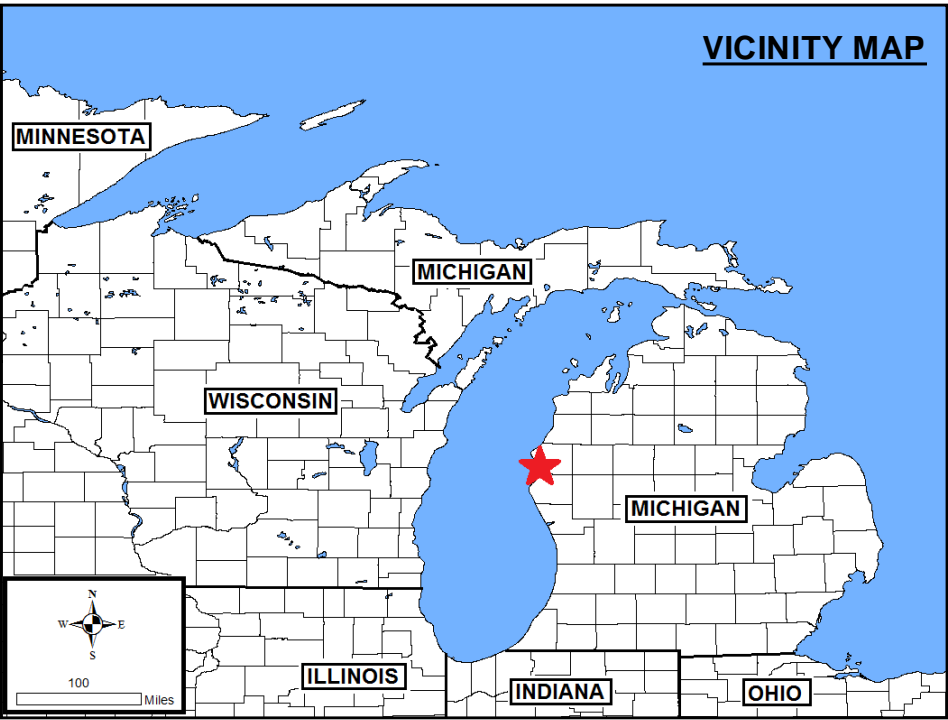
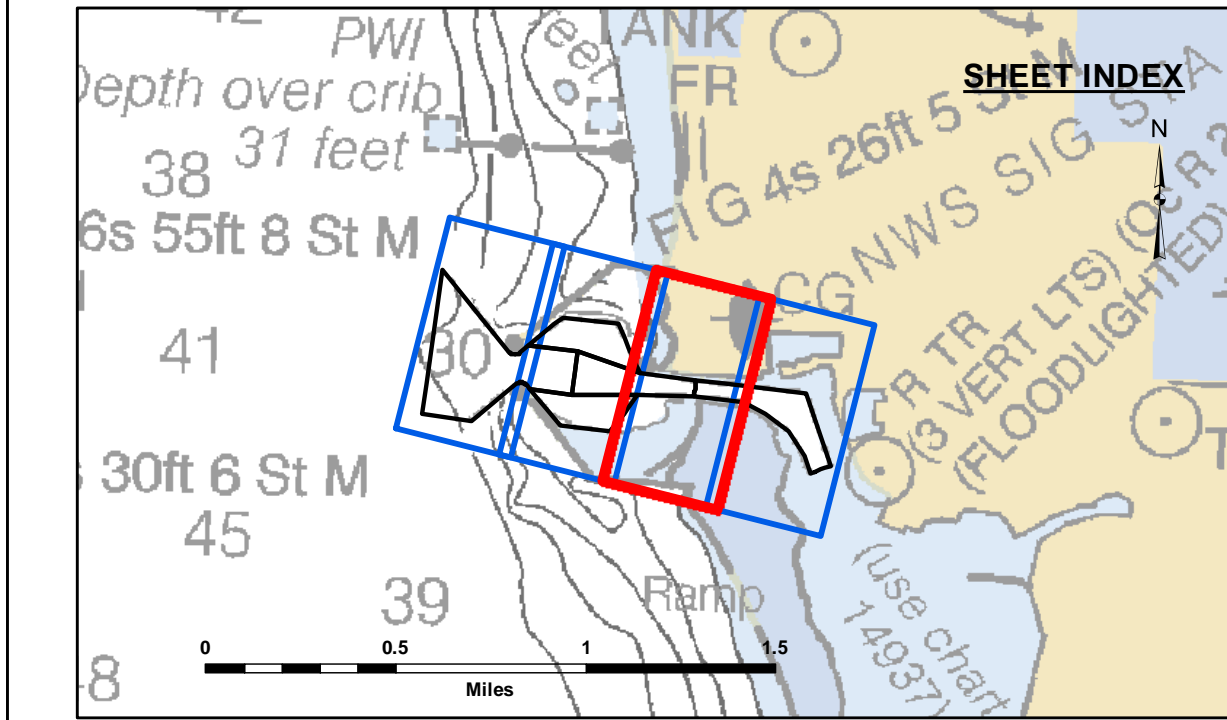
**ACCESS LIMITATIONS:** The United States Government (funders) of these data and the recipient accept and use them with the express understanding that the data are not to be used for any purpose other than that for which they were provided. The data are not to be used, in whole or in part, for any purpose other than that for which they were provided. The data are not to be used, in whole or in part, for any purpose other than that for which they were provided. The data are not to be used, in whole or in part, for any purpose other than that for which they were provided.

U.S. ARMY CORPS OF ENGINEERS DETROIT DISTRICT		
Submitted:	Surveyed By:	
Recommended:	Plotted By:	
Approved:	Chief, Technical Services	Checked By:

**LUDINGTON HARBOR, MI**  
Ludington Harbor  
LU\_01\_LUD\_20200617\_AD  
17 June 2020

**Sheet Reference Number**  
2 of 4



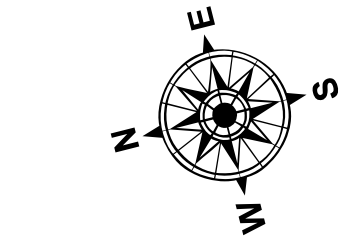


**LEGEND**

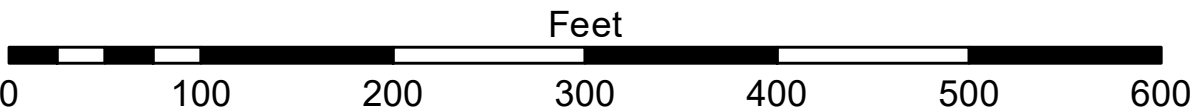
- ..... Cable Submarine
- - Cable Overhead
- Channel\_Limits
- Beacon, General
- Contour Lines
- Channel\_Limits

**SOUNDING LEGEND**

- LESS THAN PROJECT DEPTH
- PROJECT DEPTH
- PROJECT DEPTH +1'
- PROJECT DEPTH +2'
- PROJECT DEPTH +3'
- PROJECT DEPTH +4'
- PROJECT DEPTH +5'



1 inch = 100 feet



**NOTES:**

THE INFORMATION DEPICTED ON THIS MAP REPRESENTS THE RESULTS OF THE SURVEYS MADE ON THE DATES INDICATED AND CAN ONLY BE CONSIDERED AS INDICATING THE GENERAL CONDITIONS EXISTING AT THAT TIME.

ALL DEPTHS AND PROJECT DEPTHS ARE REFERRED TO LOW WATER DATUM ELEVATION 577.5 FT. ABOVE MEAN WATER LEVEL, I.G.L.D. 1985.

HYDRAULIC CORRECTOR OF 0.3' APPLIED

GRIDS SHOWN ARE BASED ON THE NATIONAL GEODETIC SURVEY PROJECTION TABLES, STATE OF MICHIGAN, CENTRAL ZONE (2112), LAMBERT PROJECTION, 1983 NORTH AMERICAN DATUM, US SURVEY FOOT.

PROJECT DEPTHS: 30.0' 29.5' and 29.0' FOR MAIN CHANNEL.  
18.0' TURNING BASIN (AS NOTED)

POSITION SYSTEM: Applanix POSMV WITH FUGRO MARINESTAR GNSS  
SONIC SOUNDER: ODOM CV-300  
TRANSDUCER: 200 KHZ WITH 4.0 DEGREE BEAM ANGLE

WATER LEVEL ELEVATIONS (GAGE) OBTAINED DURING THE SURVEY WERE FROM THE NOAA GAGE STATION.

2010 AERIAL PHOTOGRAPHY DATA SOURCE: USGS

  
**US Army Corps of Engineers**  
District: CELRE

DISCLAIMER: The data represented by the results of data collection is for informational purposes only. The U.S. Army Corps of Engineers does not warrant the accuracy, completeness, or reliability of the data. The user is responsible for the results of any application of the data for other than its intended purpose. The U.S. Army Corps of Engineers is not responsible for any damage or injury resulting from the use of this data. The user is responsible for the results of any application of the data for other than its intended purpose.

U.S. ARMY CORPS OF ENGINEERS DETROIT DISTRICT		
Submitted:	Surveyed By:	
Recommended:	Plotted By:	
Approved:	Chief, Technical Services	

**LUDINGTON HARBOR, MI**  
Ludington Harbor  
LU\_01\_LUD\_20200617\_AD  
17 June 2020

**Sheet Reference Number**  
3 of 4



