

PROJECT DEPTH = 12.0'

DISCLAIMER: The United States Government furnishes these data and the recipient accepts and uses them with the express understanding that the data are not to be used for any purpose other than that for which they were provided. The recipient may not transfer these data to others without also transferring this disclaimer.

Access Constraints: The United States Government furnishes these data and the recipient accepts and uses them with the express understanding that the data are not to be used for any purpose other than that for which they were provided. The recipient may not transfer these data to others without also transferring this disclaimer.

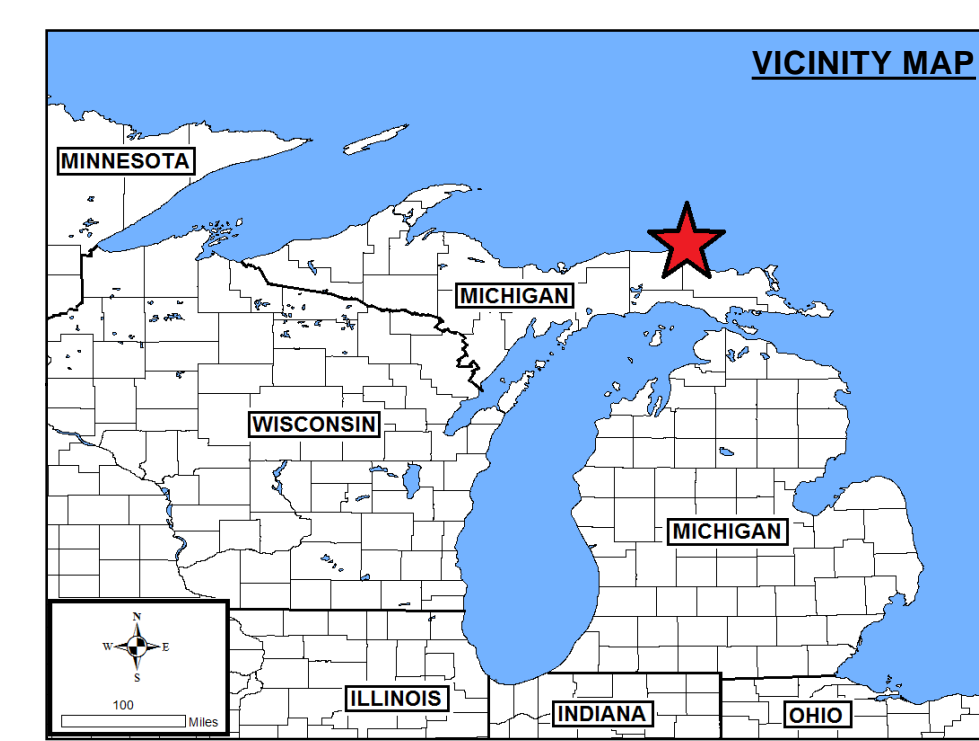
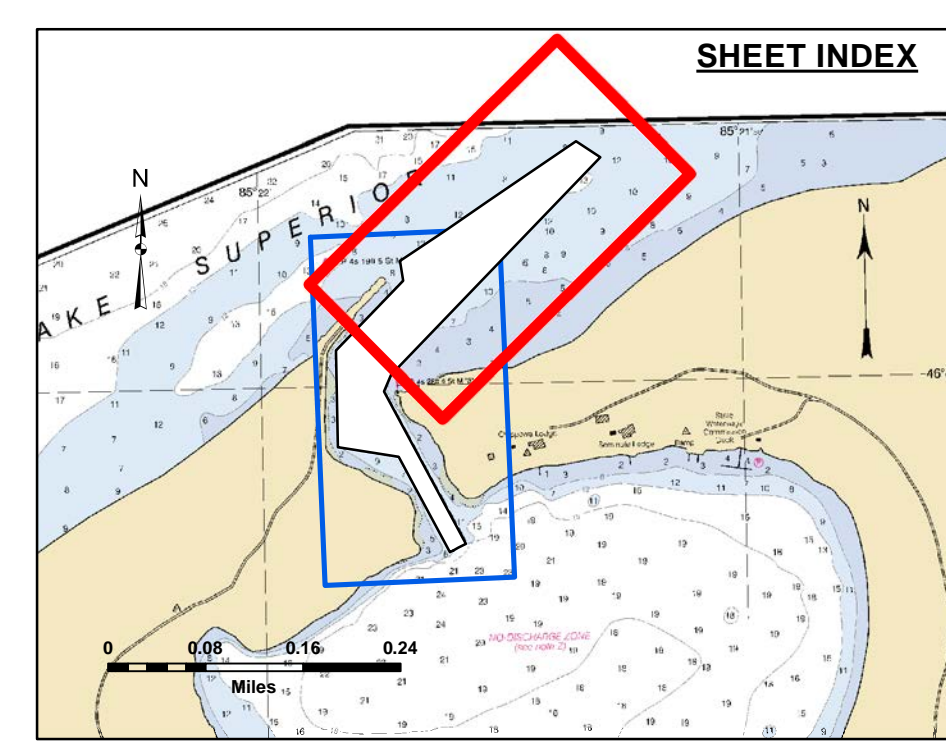
Product Liability: The data represent the results of data collection and processing for a specific US Army Corps of Engineers activity and indicate the general existing conditions. Engineers activity and indicate the general existing conditions. The user is responsible for the accuracy of the data for other than its intended purpose.

Submitted:	Surveyed By:
Recommended:	Plotted By:
Approved:	Checked By:

U.S. ARMY CORPS OF ENGINEERS
DETROIT DISTRICT

Little Lake Harbor, MI
Little Lake Harbor
LT_01_LKE_20230628_CS
28 June 2023

Sheet Reference Number
1 of 2

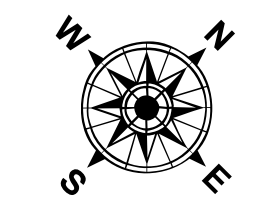


LEGEND

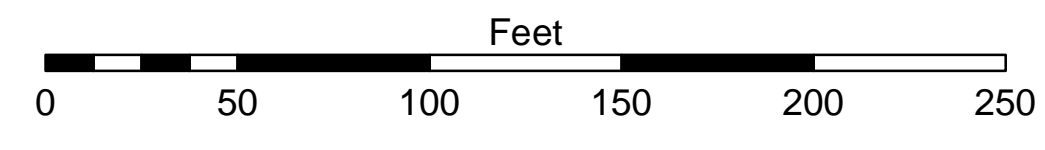
- Cable Submarine
- - - Cable Overhead
- Placement Area
- ⊥ Beacon, General
- Contour Lines
- ▭ Channel Limits

SOUNDING LEGEND

- LESS THAN PROJECT DEPTH
- PROJECT DEPTH
- PROJECT DEPTH +1'
- PROJECT DEPTH +2'
- PROJECT DEPTH +3'
- PROJECT DEPTH +4'
- PROJECT DEPTH +5'



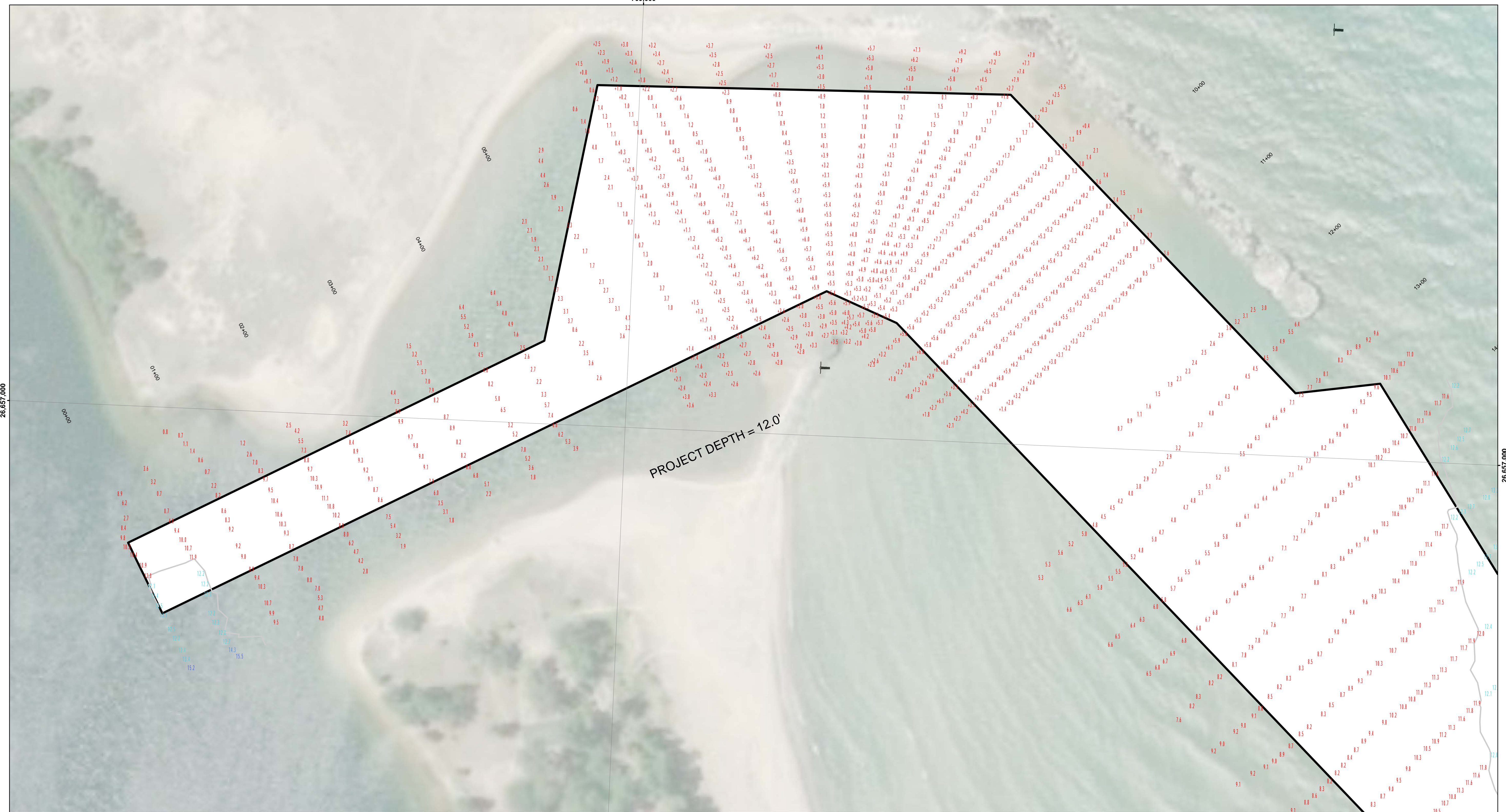
1 inch = 50 feet



NOTES:

1. THE INFORMATION DEPICTED ON THIS MAP REPRESENTS THE RESULTS OF SURVEYS CONDUCTED ON DATE LISTED AND CAN ONLY BE CONSIDERED AS INDICATING THE GENERAL CONDITIONS PRESENT AT THE TIME.
2. ELEVATIONS AND SOUNDING DEPTHS ARE REFERENCED TO INTERNATIONAL GREAT LAKES DATUM 1985 (IGLD 85). LOW WATER DATUM ZERO IS 601.1 FEET ABOVE MEAN WATER LEVEL AT POINT RIMOUSKI QUEBEC. DEPTHS ARE MEASURED USING A TELEDYNE ECHOTRAC E20 SINGLE BEAM ECHOSOUNDER.
3. HORIZONTAL POSITIONING IS DETERMINED USING A TRIMBLE MPS865 GPS RECEIVER WITH OMNISTAR GPS CORRECTIONS.
4. GRID COORDINATES ARE BASED ON THE MICHIGAN STATE PLANE COORDINATE SYSTEM, LAMBERT PROJECTION, MICHIGAN NORTH ZONE (211), NORTH AMERICAN DATUM 1983 (NAD83). ALL COORDINATES SHOWN ARE IN U.S. SURVEY FEET.
5. THE LOCATION OF NAVIGATION AIDS REPRESENT THEIR GENERAL LOCATION AND CANNOT BE CONSIDERED FOR NAVIGATION.
6. PROJECT DEPTH IS 12.0' BELOW LOW WATER DATUM.
7. ELEVATIONS AND SOUNDINGS ABOVE LOW WATER DATUM ARE SHOWN THUS +2.0. ELEVATION AND SOUNDINGS BELOW LOW WATER DATUM ARE SHOWN THUS 2.0.

IMAGERY SOURCE: ESRI

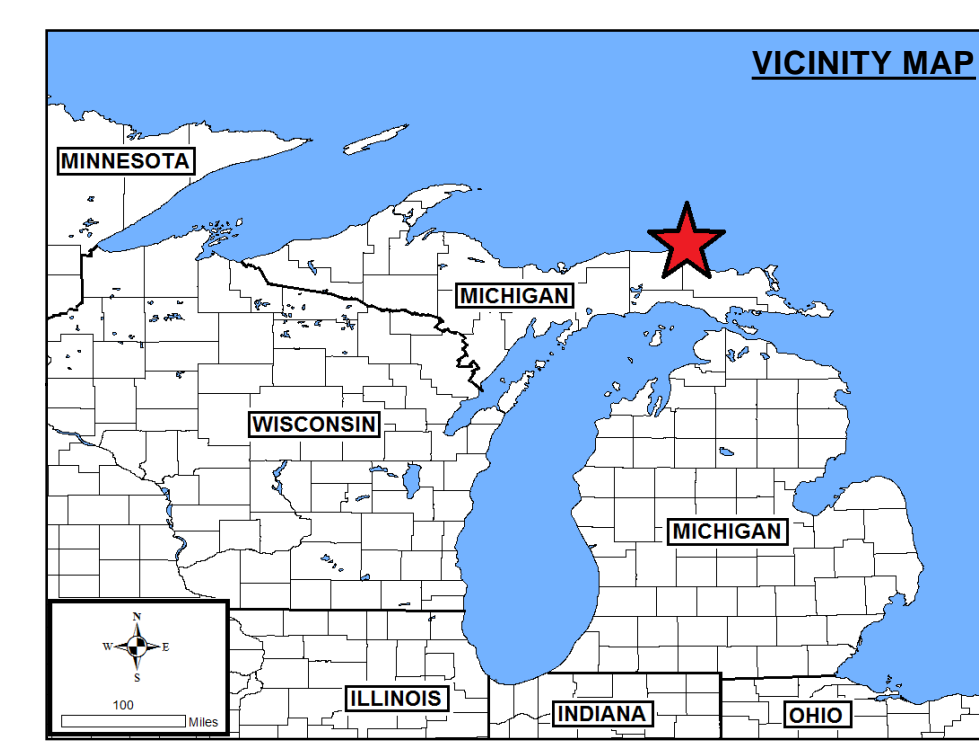
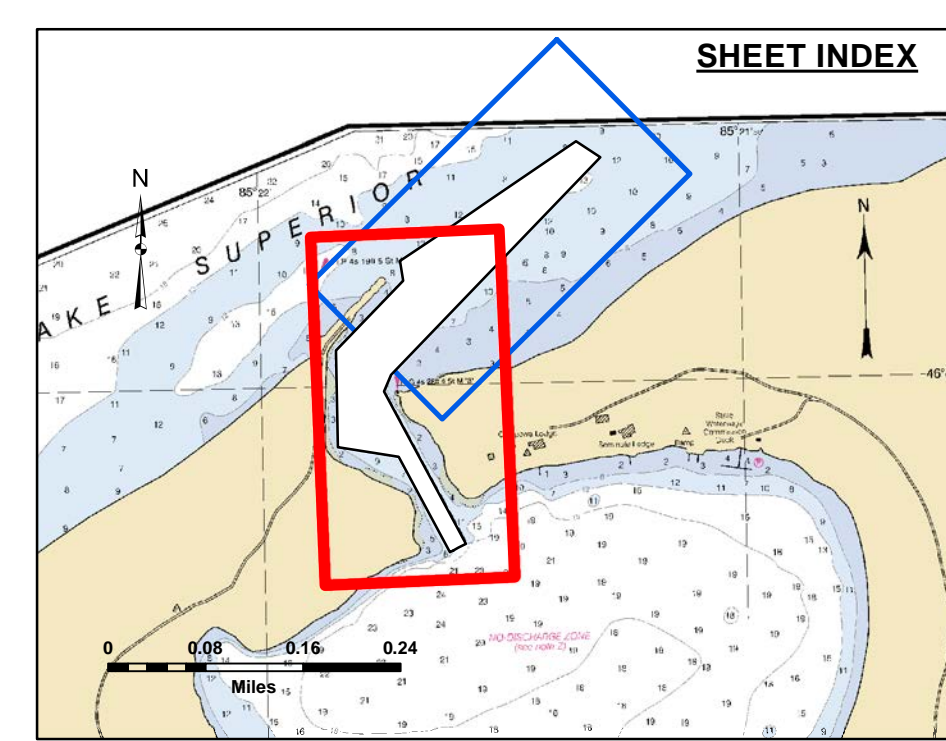


Disclaimer: The data represented by the results of data collection processing for a specific US Army Corps of Engineers activity and indicates the general existing conditions. The user is responsible for the results of any of the application of the data for other than its intended purpose.

Access Constraints: The United States Government furnishes these data and the recipient accepts and uses them with the express understanding that they are not to be used for any purpose other than that for which they were provided. The user is responsible for the accuracy, reliability, usability or suitability for any particular purpose of the data. The user is responsible for the accuracy, completeness, and reliability of the data. The user is responsible for the results of any of the application of the data for other than its intended purpose. These data are provided to the recipient for their use only and are not to be used for any purpose other than that for which they were provided. The recipient may not transfer these data to others without also transferring this Disclaimer.

U.S. ARMY CORPS OF ENGINEERS DETROIT DISTRICT		
Submitted:	Surveyed By:	
Recommended:	Plotted By:	
Approved:	Chief, Survey Station	
	Chief, Technical Services	

Little Lake Harbor, MI
 Little Lake Harbor
 LT_01_LKE_20230628_CS
 28 June 2023

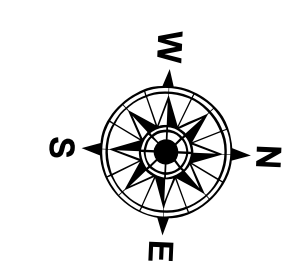


LEGEND

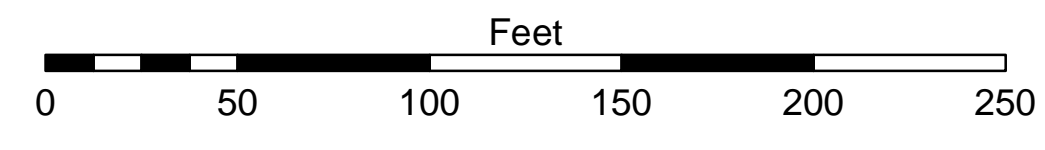
- Cable Submarine
- - - Cable Overhead
- Placement Area
- ⊥ Beacon, General
- Contour Lines
- ▭ Channel Limits

SOUNDING LEGEND

- Red: LESS THAN PROJECT DEPTH
- Light Blue: PROJECT DEPTH
- Light Green: PROJECT DEPTH +1'
- Light Yellow: PROJECT DEPTH +2'
- Light Orange: PROJECT DEPTH +3'
- Light Purple: PROJECT DEPTH +4'
- Dark Purple: PROJECT DEPTH +5'



1 inch = 50 feet



NOTES:

1. THE INFORMATION DEPICTED ON THIS MAP REPRESENTS THE RESULTS OF SURVEYS CONDUCTED ON DATE LISTED AND CAN ONLY BE CONSIDERED AS INDICATING THE GENERAL CONDITIONS PRESENT AT THE TIME.
2. ELEVATIONS AND SOUNDING DEPTHS ARE REFERENCED TO INTERNATIONAL GREAT LAKES DATUM 1985 (IGLD 85). LOW WATER DATUM ZERO IS 601.1 FEET ABOVE MEAN WATER LEVEL AT POINT RIMOULSKI QUEBEC. DEPTHS ARE MEASURED USING A TELEDYNE ECHOTRAC E20 SINGLE BEAM ECHOSOUNDER.
3. HORIZONTAL POSITIONING IS DETERMINED USING A TRIMBLE MPS865 GPS RECEIVER WITH OMNISTAR GPS CORRECTIONS.
4. GRID COORDINATES ARE BASED ON THE MICHIGAN STATE PLANE COORDINATE SYSTEM, LAMBERT PROJECTION, MICHIGAN NORTH ZONE (211), NORTH AMERICAN DATUM 1983 (NAD83). ALL COORDINATES SHOWN ARE IN U.S. SURVEY FEET.
5. THE LOCATION OF NAVIGATION AIDS REPRESENT THEIR GENERAL LOCATION AND CANNOT BE CONSIDERED FOR NAVIGATION.
6. PROJECT DEPTH IS 12.0' BELOW LOW WATER DATUM.
7. ELEVATION AND SOUNDINGS ABOVE LOW WATER DATUM ARE SHOWN THUS +2.0. ELEVATION AND SOUNDINGS BELOW LOW WATER DATUM ARE SHOWN THUS 2.0.

IMAGERY SOURCE: ESRI

Sheet Reference Number
 2 of 2