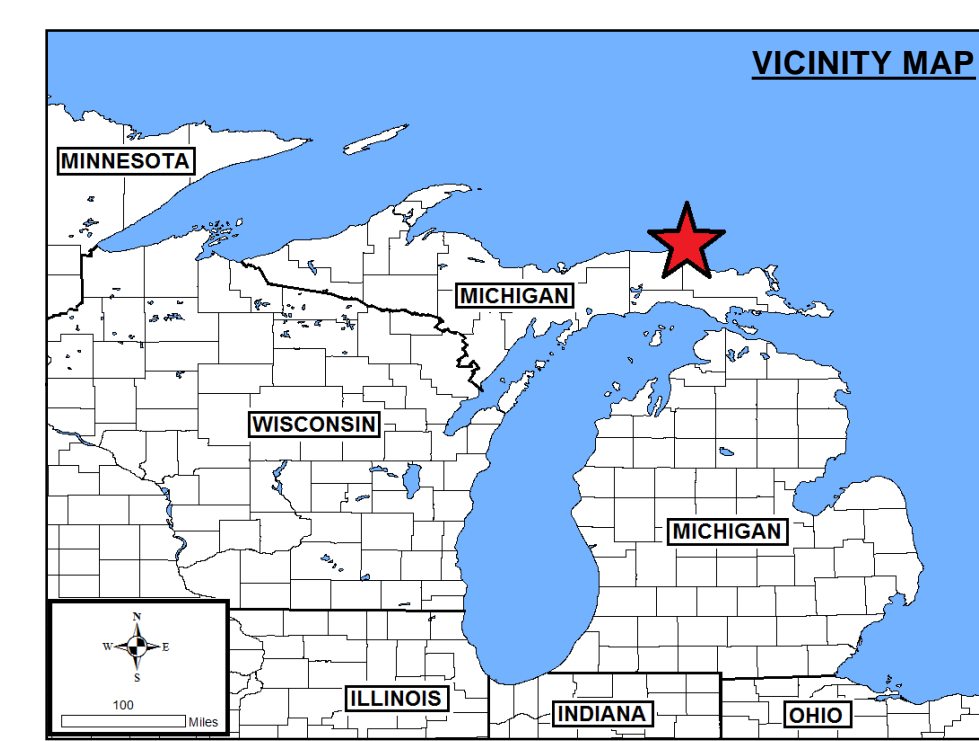
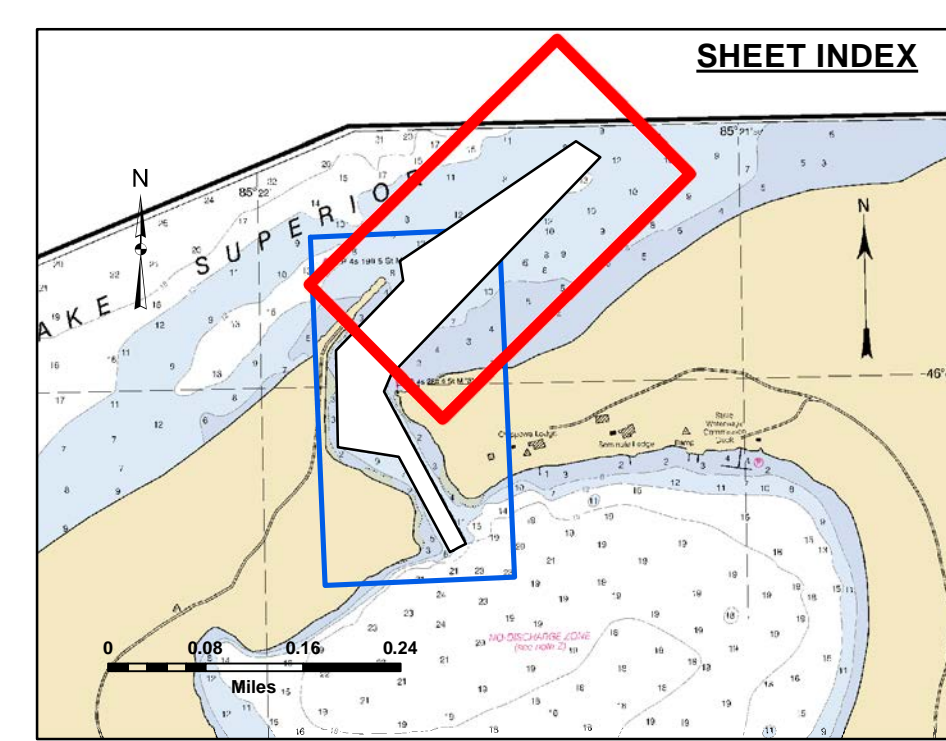


Disclaimer: The data represents the results of data collection and processing for a specific US Army Corps of Engineers activity and is not intended for use for any other purpose. The user is responsible for the accuracy of the data for other than its intended purpose.

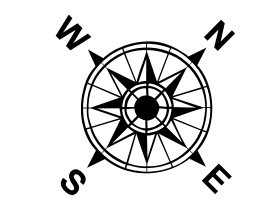
Access Constraints: The United States Government furnishes this data and the recipient accepts and uses them with the express understanding that the data is provided for informational purposes only. The data is not intended for use for any other purpose. The user is responsible for the accuracy of the data for other than its intended purpose. The recipient may not transfer these data to others without also transferring the Disclaimer.

U.S. ARMY CORPS OF ENGINEERS DETROIT DISTRICT		
Submitted:	Surveyed By:	
Recommended:	Plotted By:	
Approved:	Chief, Survey Station	
	Chief, Technical Services	

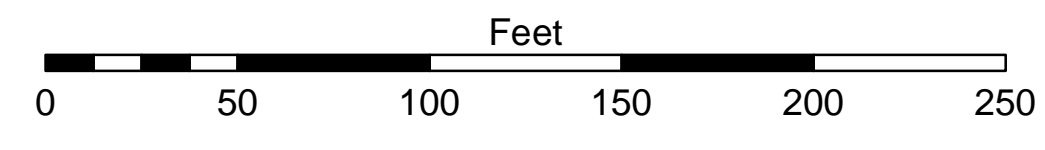


- LEGEND**
- Cable Submarine
 - - - Cable Overhead
 - ▭ Placement Area
 - ⊥ Beacon, General
 - Contour Lines
 - ▭ Channel Limits

- SOUNDING LEGEND**
- LESS THAN PROJECT DEPTH
 - PROJECT DEPTH
 - PROJECT DEPTH +1'
 - PROJECT DEPTH +2'
 - PROJECT DEPTH +3'
 - PROJECT DEPTH +4'
 - PROJECT DEPTH +5'



1 inch = 50 feet



NOTES:

- THE INFORMATION DEPICTED ON THIS MAP REPRESENTS THE RESULTS OF SURVEYS CONDUCTED ON DATE LISTED AND CAN ONLY BE CONSIDERED AS INDICATING THE GENERAL CONDITIONS PRESENT AT THE TIME.
- ELEVATIONS AND SOUNDING DEPTHS ARE REFERENCED TO INTERNATIONAL GREAT LAKES DATUM 1985 (IGLD 85). LOW WATER DATUM ZERO IS 601.1 FEET ABOVE MEAN WATER LEVEL AT POINT RIMOUISKI QUEBEC. DEPTHS ARE MEASURED USING AN ODOM ECHOTRAC E20 SINGLEBEAM ECHOSOUNDER FOR THE HYDROGRAPHIC SOUNDINGS. ADDITIONALLY A TRIMBLE SX-10 SCANNING TOTAL STATION, AND TRIMBLE R10 RTK WITH TRIMBLE R10 BASE STATION WAS USED IN DETERMINING ELEVATIONS THROUGHOUT SHOALED AREAS ABOVE LWD.
- HORIZONTAL POSITIONING FOR HYDROGRAPHIC SOUNDINGS IS DETERMINED USING A TRIMBLE MP5885 GPS RECEIVER WITH OMNISTAR GPS CORRECTIONS. A TRIMBLE R10 RTK GPS UTILIZING SUB-METER DGPS RECEIVER FOR HYDROGRAPHIC SOUNDINGS. A TRIMBLE R10 RTK GPS UTILIZING A TRIMBLE R10 BASE STATION WAS USED TO COLLECT DATA THROUGHOUT SHOALED AREAS ABOVE LWD.
- GRID COORDINATES ARE BASED ON THE MICHIGAN STATE PLANE COORDINATE SYSTEM, LAMBERT PROJECTION, MICHIGAN NORTH ZONE (2111), NORTH AMERICAN DATUM 1983 (NAD83). ALL COORDINATES SHOWN ARE IN U.S. SURVEY FEET.
- THE LOCATION OF NAVIGATION AIDS REPRESENT THEIR GENERAL LOCATION AND CANNOT BE CONSIDERED FOR NAVIGATION.
- PROJECT DEPTH IS 12.0' BELOW LOW WATER DATUM.
- ELEVATION AND SOUNDINGS ABOVE LWD ARE SHOWN THUS +2.0. ELEVATION AND SOUNDINGS BELOW LWD ARE SHOWN THUS 2.0.

IMAGERY SOURCE: ESRI

Little Lake Harbor, MI
Little Lake Harbor
LT_01_LKE_20220715_CS
15 July 2022

Sheet Reference Number
1 of 2

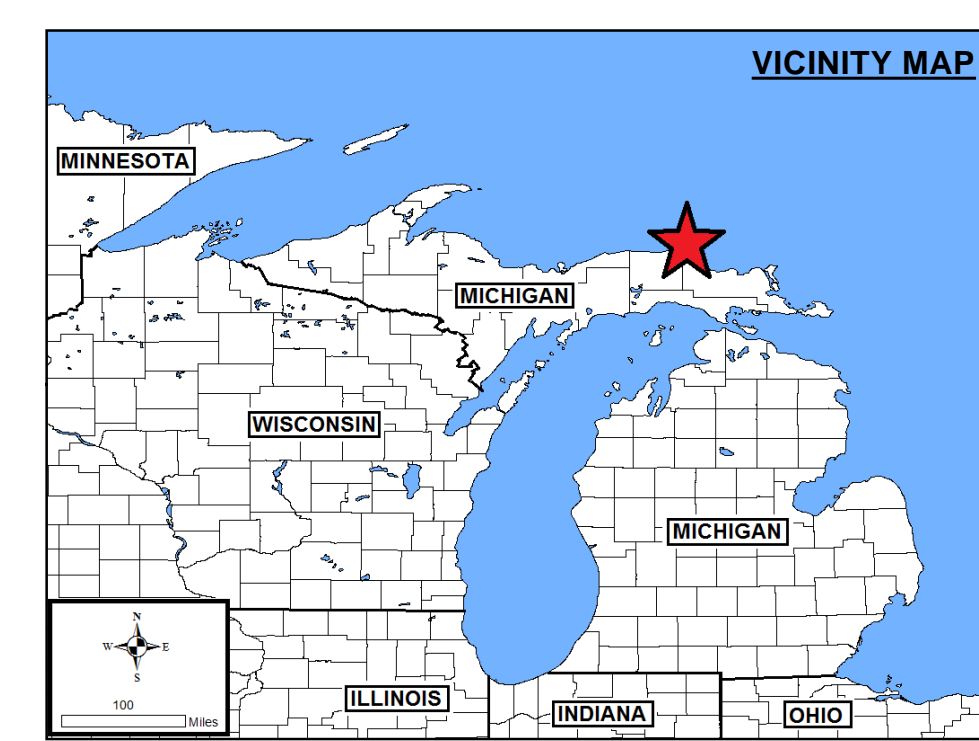
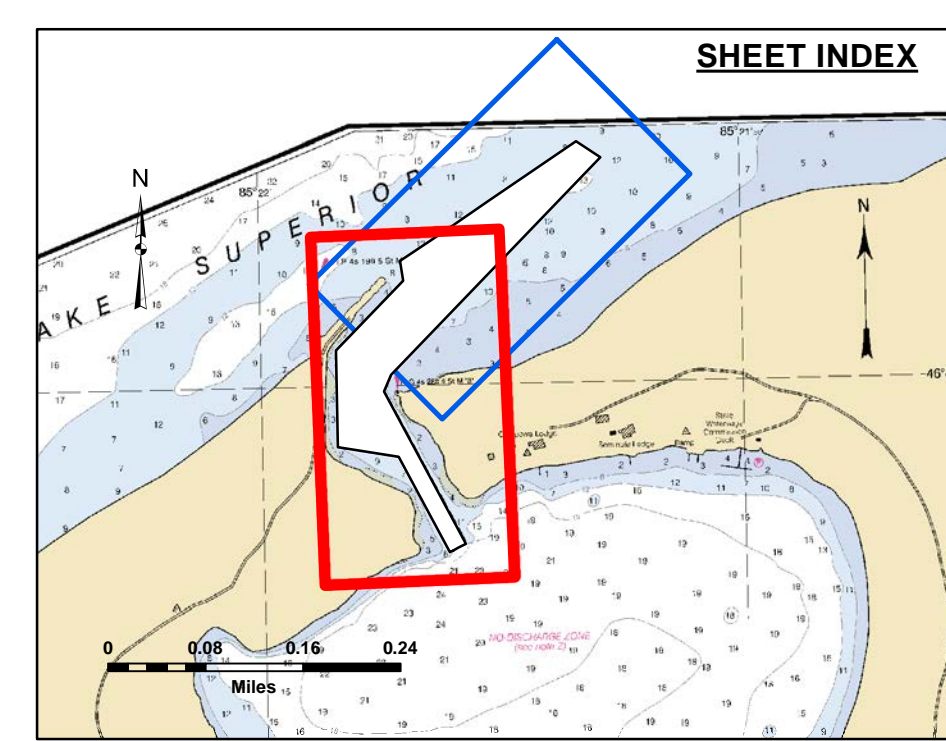


Disclaimer: The data represented by the results of data collection processing for a specific US Army Corps of Engineers activity and indicates the general existing conditions. The user is responsible for the results and accuracy specifications. The user is responsible for the results of any of the application of the data for other than its intended purpose.

DISCLAIMER: The United States Government furnishes these data and the recipient accepts and uses them with the express understanding that the data are not to be used for any purpose other than that for which they were provided. The recipient may not transfer these data to others without also transferring this disclaimer.

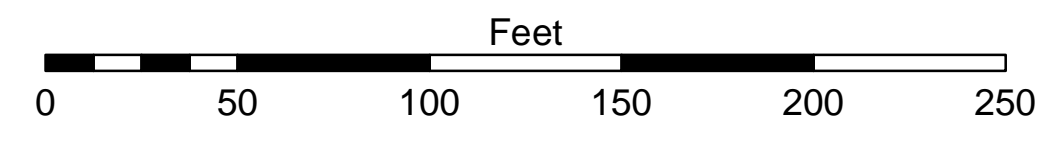
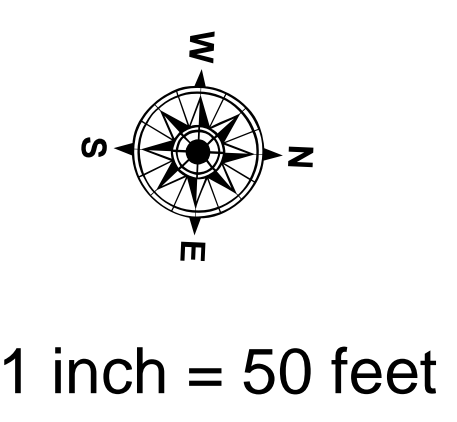
Submitted:	Surveyed By:
Recommended:	Plotted By:
Approved:	Checked By:

U.S. ARMY CORPS OF ENGINEERS
DETROIT DISTRICT



- LEGEND**
- Cable Submarine
 - - - Cable Overhead
 - Placement Area
 - ⊥ Beacon, General
 - Contour Lines
 - ▭ Channel Limits

- SOUNDING LEGEND**
- Red: LESS THAN PROJECT DEPTH
 - Light Blue: PROJECT DEPTH
 - Light Green: PROJECT DEPTH +1'
 - Light Yellow: PROJECT DEPTH +2'
 - Light Orange: PROJECT DEPTH +3'
 - Light Red: PROJECT DEPTH +4'
 - Dark Red: PROJECT DEPTH +5'



NOTES:

1. THE INFORMATION DEPICTED ON THIS MAP REPRESENTS THE RESULTS OF SURVEYS CONDUCTED ON DATE LISTED AND CAN ONLY BE CONSIDERED AS INDICATING THE GENERAL CONDITIONS PRESENT AT THE TIME.
2. ELEVATIONS AND SOUNDING DEPTHS ARE REFERENCED TO INTERNATIONAL GREAT LAKES DATUM 1985 (IGLD 85). LOW WATER DATUM ZERO IS 601.1 FEET ABOVE MEAN WATER LEVEL AT POINT RIMOUISKI QUEBEC. DEPTHS ARE MEASURED USING AN ODOM ECHOTRAQ E20 SINGLE-BEAM ECHOSOUNDER FOR THE HYDROGRAPHIC SOUNDINGS. ADDITIONALLY A TRIMBLE SX-10 SCANNING TOTAL STATION, AND TRIMBLE R10 RTK WITH TRIMBLE R10 BASE STATION WAS USED IN DETERMINING ELEVATIONS THROUGHOUT SHOALED AREAS ABOVE LWD.
3. HORIZONTAL POSITIONING FOR HYDROGRAPHIC SOUNDINGS IS DETERMINED USING A TRIMBLE MP5885 GPS RECEIVER WITH OMNISTAR GPS CORRECTIONS. A TRIMBLE R10 RTK GPS UTILIZING SUB-METER DGPS RECEIVER FOR HYDROGRAPHIC SOUNDINGS. A TRIMBLE R10 RTK GPS UTILIZING A TRIMBLE R10 BASE STATION WAS USED TO COLLECT DATA THROUGHOUT SHOALED AREAS ABOVE LWD.
4. GRID COORDINATES ARE BASED ON THE MICHIGAN STATE PLANE COORDINATE SYSTEM, LAMBERT PROJECTION, MICHIGAN NORTH ZONE (2111), NORTH AMERICAN DATUM 1983 (NAD83). ALL COORDINATES SHOWN ARE IN U.S. SURVEY FEET.
5. THE LOCATION OF NAVIGATION AIDS REPRESENT THEIR GENERAL LOCATION AND CANNOT BE CONSIDERED FOR NAVIGATION.
6. PROJECT DEPTH IS 12.0' BELOW LOW WATER DATUM.
7. ELEVATION AND SOUNDINGS ABOVE LWD ARE SHOWN THUS +2.0. ELEVATION AND SOUNDINGS BELOW LWD ARE SHOWN THUS 2.0.

IMAGERY SOURCE: ESRI

Little Lake Harbor, MI
Little Lake Harbor
LT_01_LKE_20220715_CS
15 July 2022

Sheet Reference Number
2 of 2