

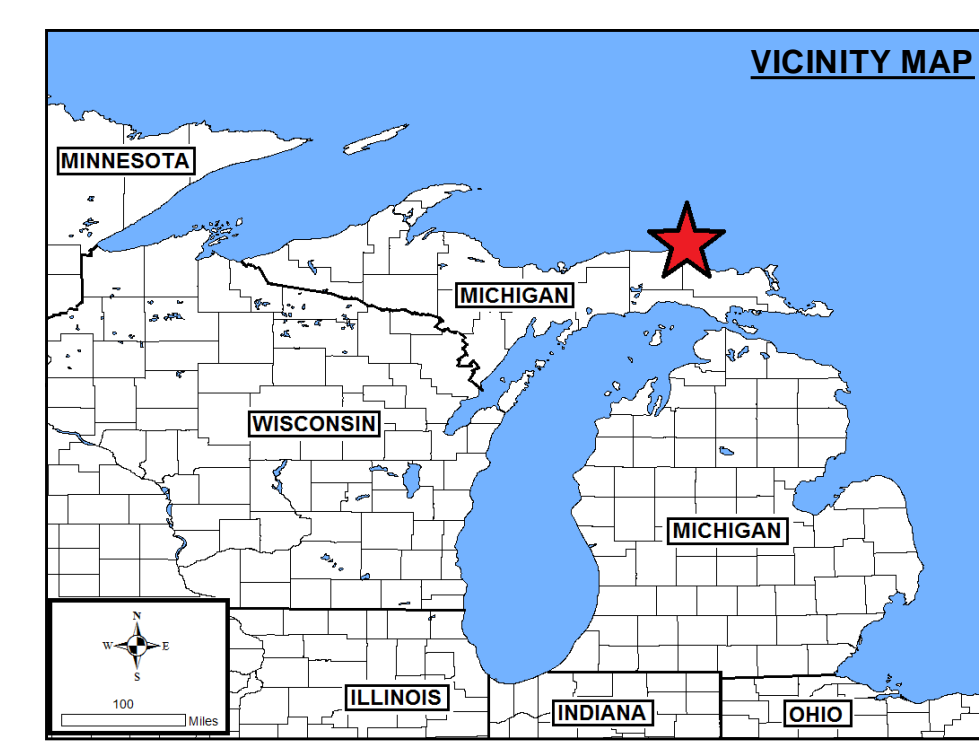
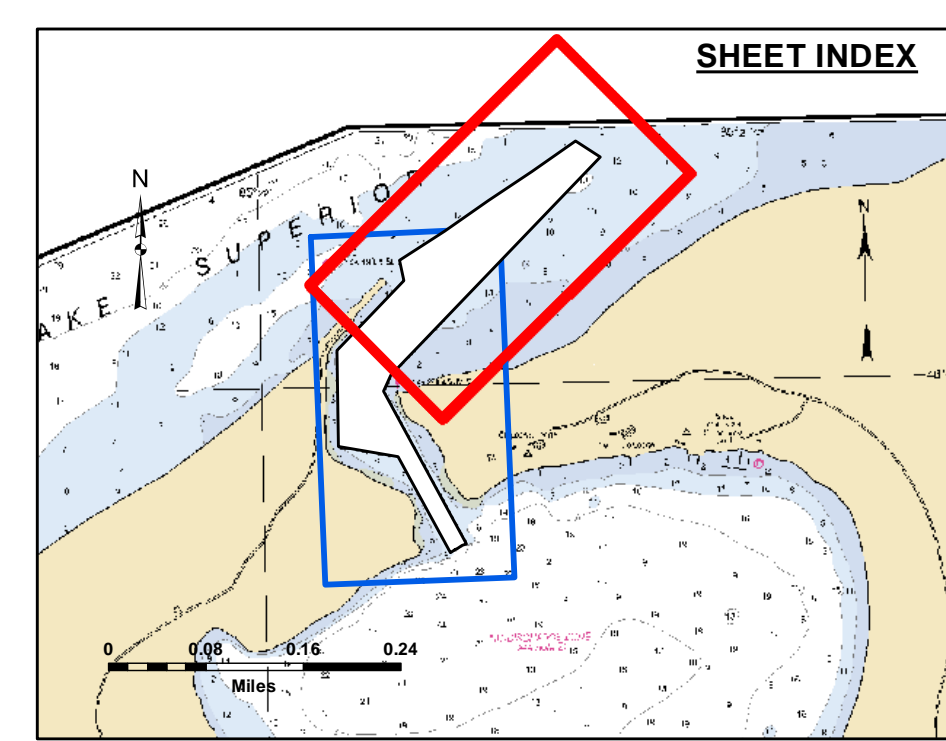
PROJECT DEPTH = 12.0'

Disclaimer: The data represents the results of data collection for a specific US Army Corps of Engineers activity and indicates the general existing conditions. The user is responsible for the accuracy, completeness, and reliability of the data for other than its intended purpose. The user is responsible for the accuracy, completeness, and reliability of the data for other than its intended purpose.

DISCLAIMER: The United States Government furnishes this data and the recipient accepts and uses them with the express understanding that the data is provided for informational purposes only, and is not intended for use in any way that may require a higher degree of accuracy, reliability, or availability than that which is provided. The user is responsible for the accuracy, completeness, and reliability of the data for other than its intended purpose. The user is responsible for the accuracy, completeness, and reliability of the data for other than its intended purpose.

U.S. ARMY CORPS OF ENGINEERS DETROIT DISTRICT	
Submitted By: _____	Surveyed By: _____
Recommended By: Chief, Survey Section	Plotted By: _____
Approved: _____	Checked By: _____

Little Lake Harbor, MI
 Little Lake Harbor
 LT_01_LKE_20210727_CS
 27 July 2021

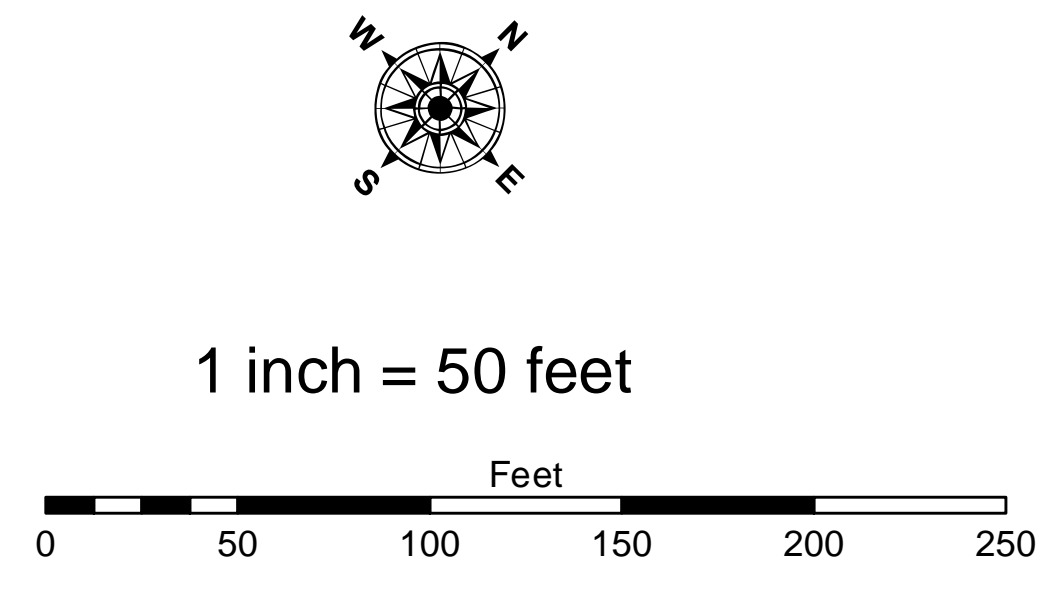


LEGEND

- Cable Submarine
- - - Cable Overhead
- Placement Area
- ⌋ Beacon, General
- Contour Lines
- ▭ Channel Limits

SOUNDING LEGEND

- LESS THAN PROJECT DEPTH
- PROJECT DEPTH
- PROJECT DEPTH +1'
- PROJECT DEPTH +2'
- PROJECT DEPTH +3'
- PROJECT DEPTH +4'
- PROJECT DEPTH +5'

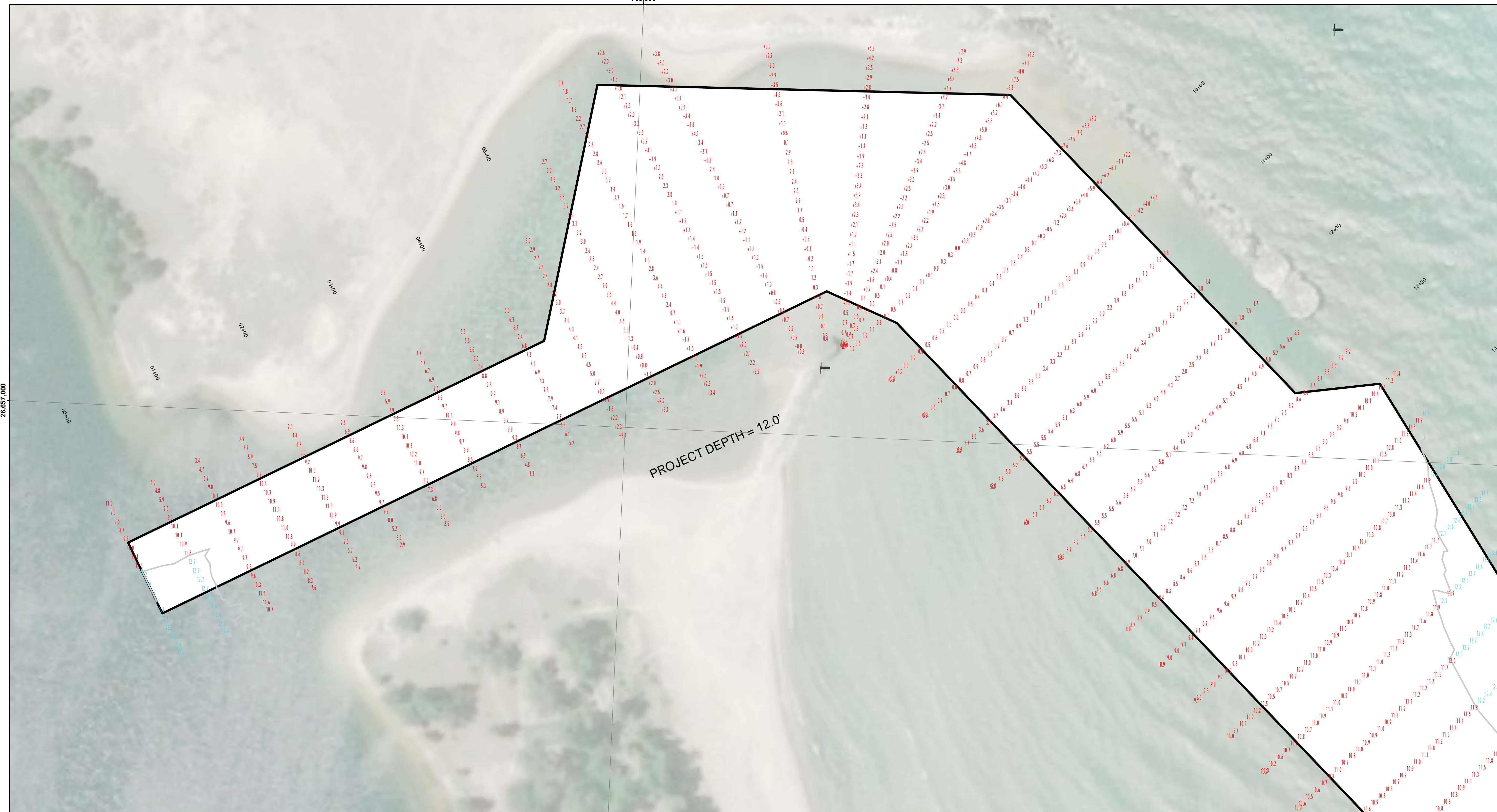


NOTES:

1. THE INFORMATION DEPICTED ON THIS MAP REPRESENTS THE RESULTS OF SURVEYS CONDUCTED ON DATE LISTED AND CAN ONLY BE CONSIDERED AS INDICATING THE GENERAL CONDITIONS PRESENT AT THE TIME.
2. ELEVATIONS AND SOUNDING DEPTHS ARE REFERENCED TO INTERNATIONAL GREAT LAKES DATUM 1985 (IGLD 85). LOW WATER DATUM ZERO IS 601.1 FEET ABOVE MEAN WATER LEVEL AT POINT RIMOUSKI QUEBEC. DEPTHS ARE MEASURED USING AN ODOM ECHOTRAC E20 SINGLEBEAM ECHOSOUNDER FOR THE HYDROGRAPHIC SOUNDINGS. ADDITIONALLY A TRIMBLE R10 RTK WITH TRIMBLE R10 BASE STATION WAS USED IN DETERMINING ELEVATIONS THROUGHOUT SHOEALED AREAS ABOVE LWD.
3. HORIZONTAL POSITIONING FOR HYDROGRAPHIC SOUNDINGS IS DETERMINED USING A TRIMBLE SPS461 GPS RECEIVER WITH MARINESTAR GPS CORRECTIONS. A TRIMBLE R10 RTK GPS UTILIZING SUB-METER DGPS RECEIVER FOR HYDROGRAPHIC SOUNDINGS. A TRIMBLE R10 RTK GPS UTILIZING A TRIMBLE R10 BASE STATION WAS USED TO COLLECT DATA THROUGHOUT SHOEALED AREAS ABOVE LWD.
4. GRID COORDINATES ARE BASED ON THE MICHIGAN STATE PLANE COORDINATE SYSTEM, LAMBERT PROJECTION, MICHIGAN NORTH ZONE (2111), NORTH AMERICAN DATUM 1983 (NAD83). ALL COORDINATES SHOWN ARE IN U.S. SURVEY FEET.
5. THE LOCATION OF NAVIGATION AIDS REPRESENT THEIR GENERAL LOCATION AND CANNOT BE CONSIDERED FOR NAVIGATION.
6. PROJECT DEPTH IS 12.0' BELOW LOW WATER DATUM.
7. ELEVATION AND SOUNDINGS ABOVE LWD ARE SHOWN THUS +2.0. ELEVATION AND SOUNDINGS BELOW LWD ARE SHOWN THUS 2.0.

IMAGERY SOURCE: ESRI

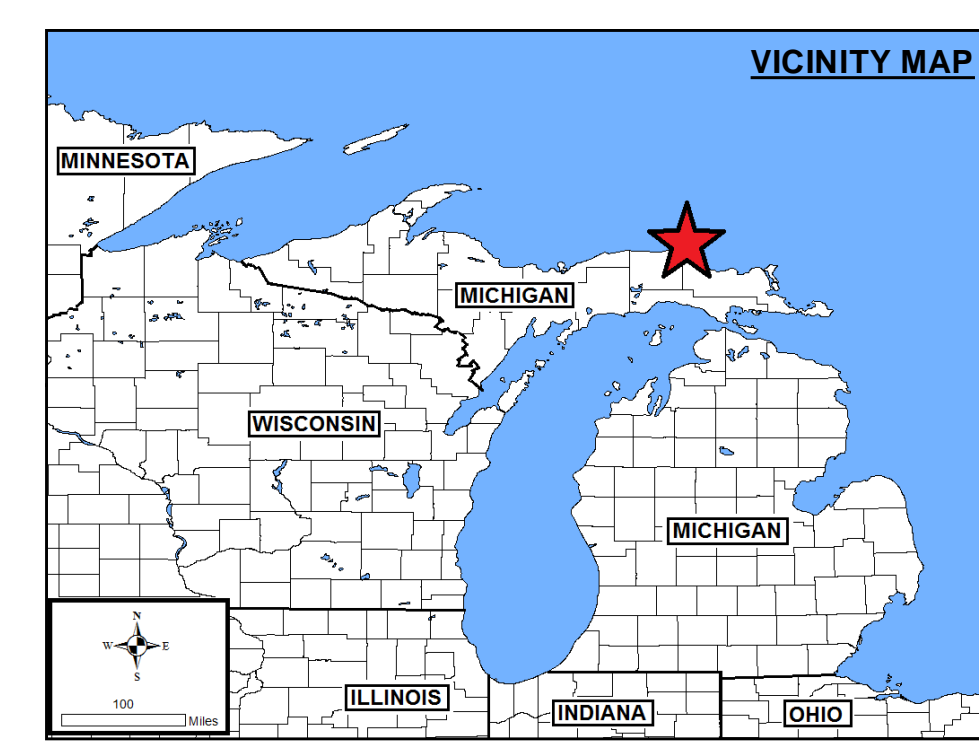
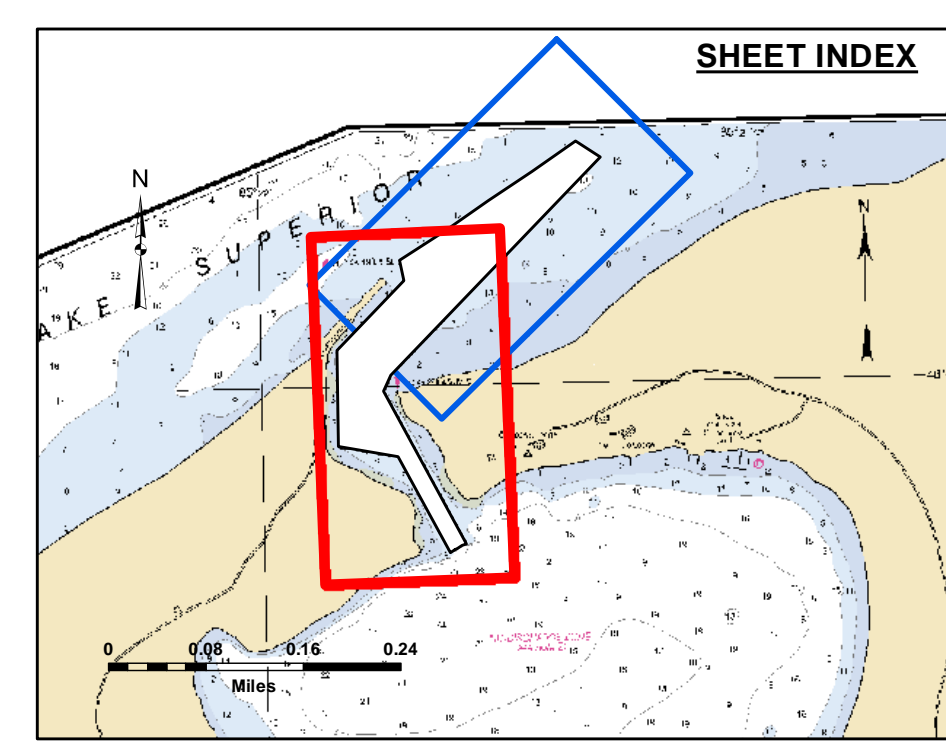
Sheet Reference Number
 1 of 2



Disclaimer: The data represents the results of data collection for a specific US Army Corps of Engineers activity and indicates the general existing conditions. The user is responsible for the accuracy, completeness, and reliability of the data for other than its intended purpose. The user is responsible for the accuracy, completeness, and reliability of the data for other than its intended purpose.

DISCLAIMER: The United States Government furnishes this data and the recipient accepts and uses them with the express understanding that the data is provided for informational purposes only, and is not intended for use in any way that would imply liability on the part of the United States Government. The recipient may not transfer this data to others without also transferring this disclaimer.

U.S. ARMY CORPS OF ENGINEERS DETROIT DISTRICT		
Submitted:	Surveyed By:	
Recommended:	Plotted By:	
Approved:	Chief, Survey Section	
	Chief, Technical Services	

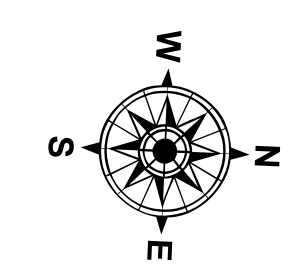


LEGEND

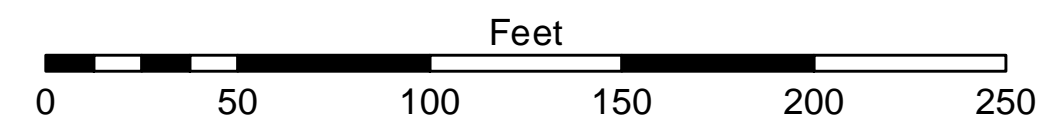
- Cable Submarine
- - - Cable Overhead
- Placement Area
- ⊥ Beacon, General
- Contour Lines
- ▭ Channel Limits

SOUNDING LEGEND

- Red: LESS THAN PROJECT DEPTH
- Light Blue: PROJECT DEPTH
- Light Green: PROJECT DEPTH +1'
- Light Blue-Green: PROJECT DEPTH +2'
- Light Blue: PROJECT DEPTH +3'
- Medium Blue: PROJECT DEPTH +4'
- Dark Blue: PROJECT DEPTH +5'



1 inch = 50 feet



NOTES:

1. THE INFORMATION DEPICTED ON THIS MAP REPRESENTS THE RESULTS OF SURVEYS CONDUCTED ON DATE LISTED AND CAN ONLY BE CONSIDERED AS INDICATING THE GENERAL CONDITIONS PRESENT AT THE TIME.
2. ELEVATIONS AND SOUNDING DEPTHS ARE REFERENCED TO INTERNATIONAL GREAT LAKES DATUM 1985 (IGLD 85). LOW WATER DATUM ZERO IS 601.1 FEET ABOVE MEAN WATER LEVEL AT POINT RIMOUSKI QUEBEC. DEPTHS ARE MEASURED USING AN ODOM ECHOTRAC E20 SINGLEBEAM ECHOSOUNDER FOR THE HYDROGRAPHIC SOUNDINGS. ADDITIONALLY A TRIMBLE R10 RTK WITH TRIMBLE R10 BASE STATION WAS USED IN DETERMINING ELEVATIONS THROUGHOUT SHOALED AREAS ABOVE LWD.
3. HORIZONTAL POSITIONING FOR HYDROGRAPHIC SOUNDINGS IS DETERMINED USING A TRIMBLE SPS461 GPS RECEIVER WITH MARINESTAR GPS CORRECTIONS. A TRIMBLE R10 RTK GPS UTILIZING SUB-METER DGPS RECEIVER FOR HYDROGRAPHIC SOUNDINGS. A TRIMBLE R10 RTK GPS UTILIZING A TRIMBLE R10 BASE STATION WAS USED TO COLLECT DATA THROUGHOUT SHOALED AREAS ABOVE LWD.
4. GRID COORDINATES ARE BASED ON THE MICHIGAN STATE PLANE COORDINATE SYSTEM, LAMBERT PROJECTION, MICHIGAN NORTH ZONE (2111), NORTH AMERICAN DATUM 1983 (NAD83). ALL COORDINATES SHOWN ARE IN U.S. SURVEY FEET.
5. THE LOCATION OF NAVIGATION AIDS REPRESENT THEIR GENERAL LOCATION AND CANNOT BE CONSIDERED FOR NAVIGATION.
6. PROJECT DEPTH IS 12.0' BELOW LOW WATER DATUM.
7. ELEVATION AND SOUNDINGS ABOVE LWD ARE SHOWN THUS +2.0. ELEVATION AND SOUNDINGS BELOW LWD ARE SHOWN THUS 2.0.

IMAGERY SOURCE: ESRI

Little Lake Harbor, MI
Little Lake Harbor
LT_01_LKE_20210727_CS
27 July 2021

Sheet Reference Number
2 of 2