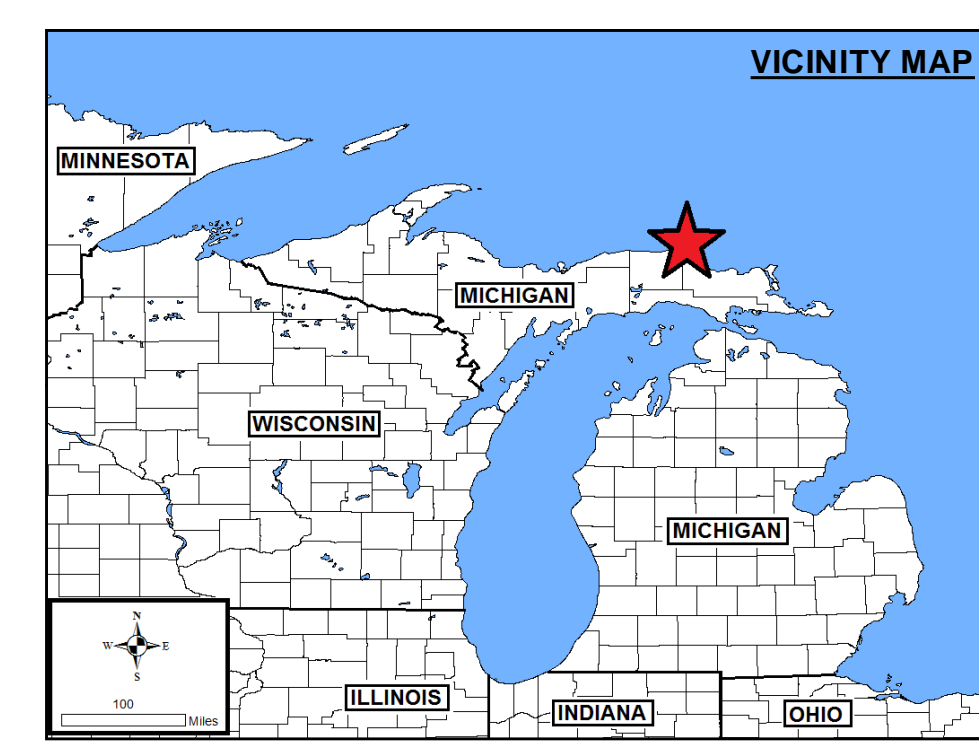
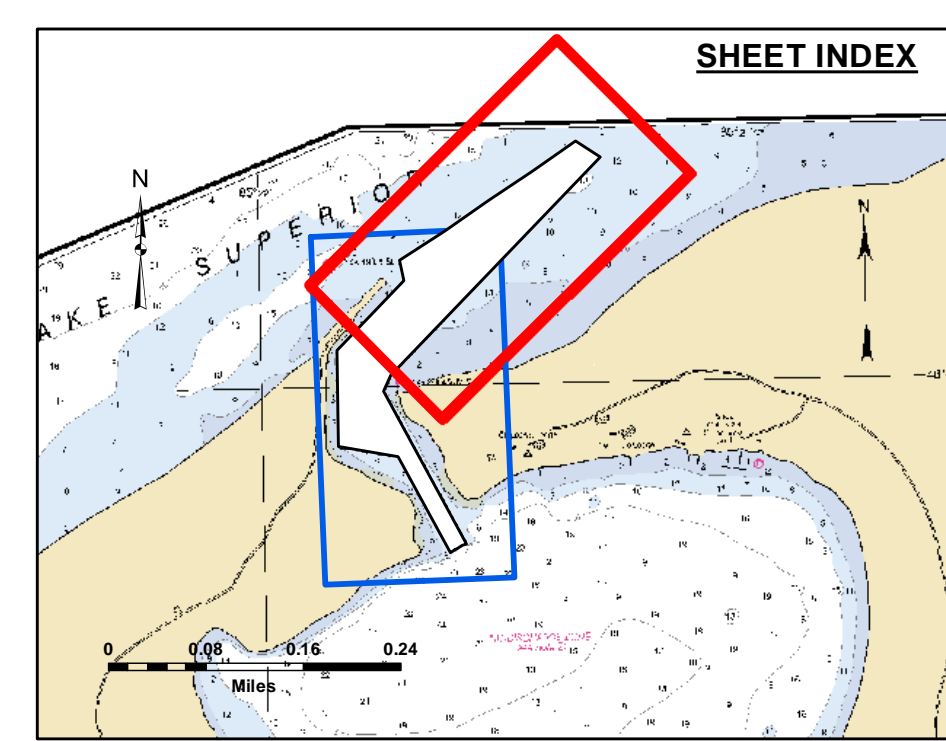


PROJECT DEPTH = 12.0'

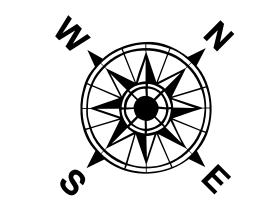


**LEGEND**

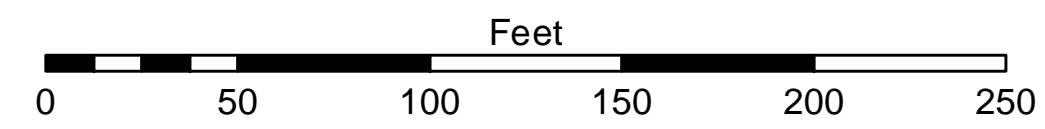
- ..... Cable Submarine
- - - Cable Overhead
- Placement Area
- ⊥ Beacon, General
- Contour Lines
- ▭ Channel Limits

**SOUNDING LEGEND**

- LESS THAN PROJECT DEPTH
- PROJECT DEPTH
- PROJECT DEPTH +1'
- PROJECT DEPTH +2'
- PROJECT DEPTH +3'
- PROJECT DEPTH +4'
- PROJECT DEPTH +5'



1 inch = 50 feet



- NOTES:**
1. THE INFORMATION DEPICTED ON THIS MAP REPRESENTS THE RESULTS OF SURVEYS CONDUCTED ON DATE LISTED AND CAN ONLY BE CONSIDERED AS INDICATING THE GENERAL CONDITIONS PRESENT AT THE TIME.
  2. ELEVATIONS AND SOUNDING DEPTHS ARE REFERENCED TO INTERNATIONAL GREAT LAKES DATUM 1985 (IGLD 85). LOW WATER DATUM ZERO IS 601.1 FEET ABOVE MEAN WATER LEVEL AT POINT RIMOUSKI QUEBEC. DEPTHS ARE MEASURED USING AN ODOM ECHOTRAC E20 SINGLEBEAM ECHOSOUNDER FOR THE HYDROGRAPHIC SOUNDINGS. ADDITIONALLY A TRIMBLE R10 RTK WITH TRIMBLE R10 BASE STATION WAS USED IN DETERMINING ELEVATIONS THROUGHOUT SHOALED AREAS ABOVE LWD.
  3. HORIZONTAL POSITIONING IS DETERMINED USING A TRIMBLE SPS461 SUB-METER DGPS RECEIVER FOR HYDROGRAPHIC SOUNDINGS. A TRIMBLE R10 RTK GPS UTILIZING A TRIMBLE R10 BASE STATION WAS USED TO COLLECT DATA THROUGHOUT SHOALED AREAS ABOVE LWD.
  4. GRID COORDINATES ARE BASED ON THE MICHIGAN STATE PLANE COORDINATE SYSTEM, LAMBERT PROJECTION, MICHIGAN NORTH ZONE (2111), NORTH AMERICAN DATUM 1983 (NAD83). ALL COORDINATES SHOWN ARE IN U.S. SURVEY FEET.
  5. THE LOCATION OF NAVIGATION AIDS REPRESENT THEIR GENERAL LOCATION AND CANNOT BE CONSIDERED FOR NAVIGATION.
  6. PROJECT DEPTH IS 12.0' BELOW LOW WATER DATUM.
  7. ELEVATION AND SOUNDINGS ABOVE LWD ARE SHOWN THUS +2.0. ELEVATION AND SOUNDINGS BELOW LWD ARE SHOWN THUS 2.0.
- IMAGERY SOURCE: ESRI



**Disclaimer:** The data represents the results of data collection for a specific project. The US Army Corps of Engineers is not responsible for the accuracy, completeness, or application of the data for other than its intended purpose. The user is responsible for the accuracy of the data for other than its intended purpose.

**Access Constraints:** The United States Government sponsors these data and the recipient accepts and uses them with the express understanding that they are provided on an "as is" basis. The availability, usability, or suitability for any particular purpose of the data is not guaranteed. The recipient may not transfer these data to others without also transferring this Disclaimer.

U.S. ARMY CORPS OF ENGINEERS  
DETROIT DISTRICT

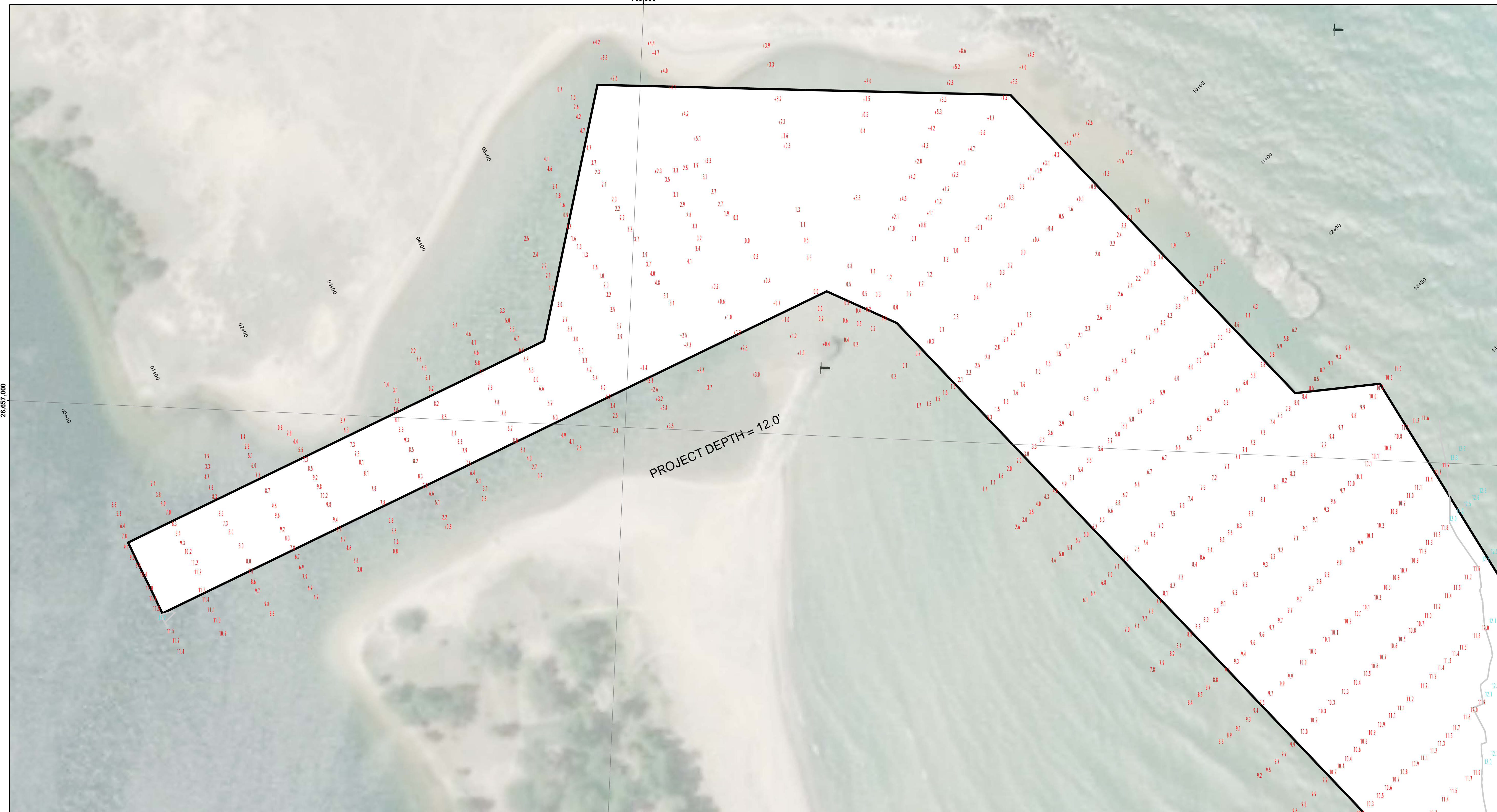
|              |              |
|--------------|--------------|
| Submitted:   | Surveyed By: |
| Recommended: | Plotted By:  |
| Approved:    | Checked By:  |

Chief, Survey Section  
Chief, Technical Services

Little Lake Harbor, MI  
Little Lake Harbor  
LT\_01\_LKE\_20200714\_CS  
14 July 2020

Sheet Reference Number  
1 of 2

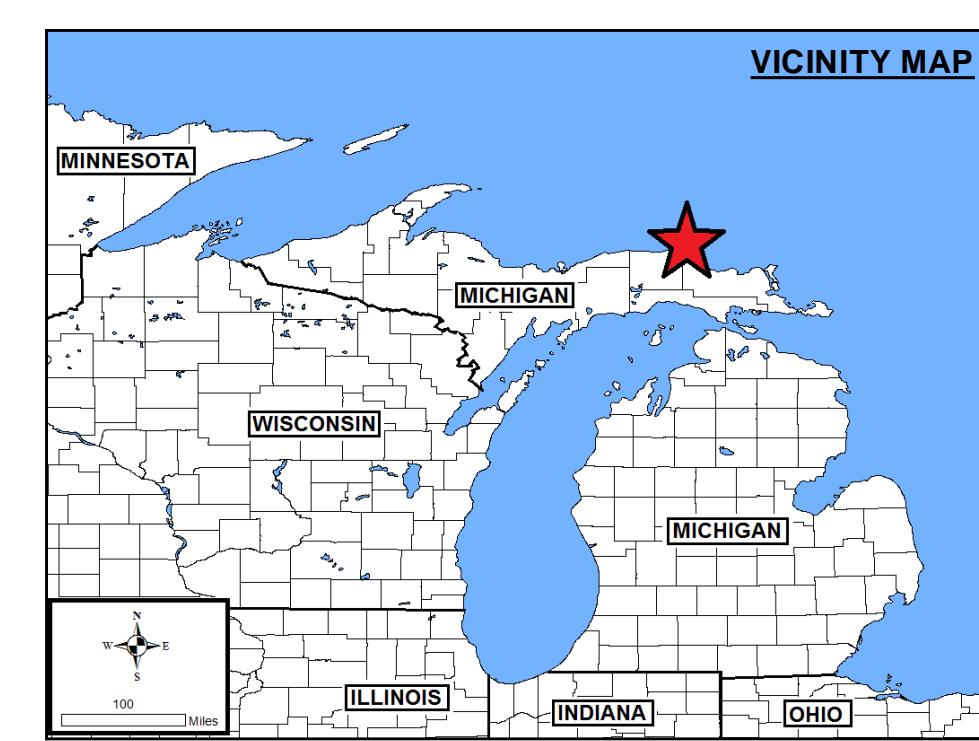
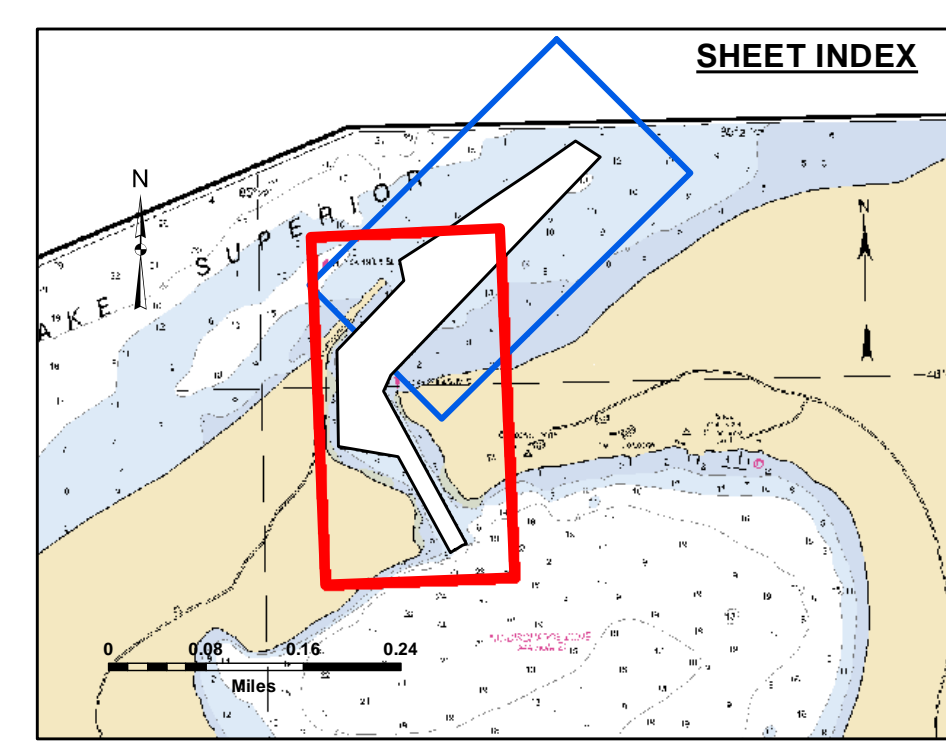




**Disclaimer:** The data represents the results of data collection for a specific project. The US Army Corps of Engineers is not responsible for the accuracy, completeness, or reliability of the data for other than its intended purpose. The user is responsible for the accuracy of the data for any other use.

**Access Constraints:** The United States Government sponsors these data and the recipient accepts and uses them with the express understanding that the data are provided on an "as is" basis. The recipient is responsible for the accuracy, completeness, or reliability of the data for any other use. The recipient may not transfer these data to others without also transferring this disclaimer.

|  |                           |  |
|--|---------------------------|--|
| U.S. ARMY CORPS OF ENGINEERS<br>DETROIT DISTRICT |                           |  |
| Submitted:                                       | Surveyed By:              |  |
| Recommended:                                     | Plotted By:               |  |
| Approved:  | Chief, Survey Section     |  |
|  | Chief, Technical Services |  |

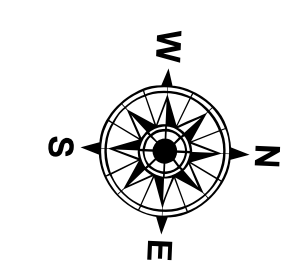


**LEGEND**

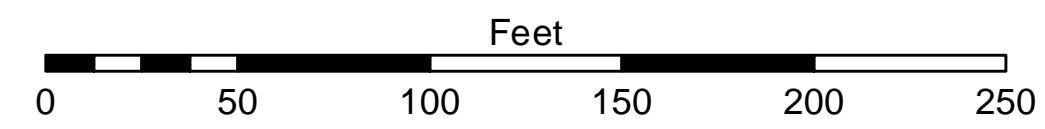
- ..... Cable Submarine
- - - Cable Overhead
- Placement Area
- ⊥ Beacon, General
- Contour Lines
- ▭ Channel Limits

**SOUNDING LEGEND**

- LESS THAN PROJECT DEPTH
- PROJECT DEPTH
- PROJECT DEPTH +1'
- PROJECT DEPTH +2'
- PROJECT DEPTH +3'
- PROJECT DEPTH +4'
- PROJECT DEPTH +5'



1 inch = 50 feet



**NOTES:**

1. THE INFORMATION DEPICTED ON THIS MAP REPRESENTS THE RESULTS OF SURVEYS CONDUCTED ON DATE LISTED AND CAN ONLY BE CONSIDERED AS INDICATING THE GENERAL CONDITIONS PRESENT AT THE TIME.
2. ELEVATIONS AND SOUNDING DEPTHS ARE REFERENCED TO INTERNATIONAL GREAT LAKES DATUM 1985 (IGLD 85). LOW WATER DATUM ZERO IS 601.1 FEET ABOVE MEAN WATER LEVEL AT POINT RIMOUSKI QUEBEC. DEPTHS ARE MEASURED USING AN ODOM ECHOTRAC E20 SINGLEBEAM ECHOSOUNDER FOR THE HYDROGRAPHIC SOUNDINGS. ADDITIONALLY A TRIMBLE R10 RTK WITH TRIMBLE R10 BASE STATION WAS USED IN DETERMINING ELEVATIONS THROUGHOUT SHOALED AREAS ABOVE LWD.
3. HORIZONTAL POSITIONING IS DETERMINED USING A TRIMBLE SPS461 SUB-METER DGPS RECEIVER FOR HYDROGRAPHIC SOUNDINGS. A TRIMBLE R10 RTK GPS UTILIZING A TRIMBLE R10 BASE STATION WAS USED TO COLLECT DATA THROUGHOUT SHOALED AREAS ABOVE LWD.
4. GRID COORDINATES ARE BASED ON THE MICHIGAN STATE PLANE COORDINATE SYSTEM, LAMBERT PROJECTION, MICHIGAN NORTH ZONE (2111), NORTH AMERICAN DATUM 1983 (NAD83). ALL COORDINATES SHOWN ARE IN U.S. SURVEY FEET.
5. THE LOCATION OF NAVIGATION AIDS REPRESENT THEIR GENERAL LOCATION AND CANNOT BE CONSIDERED FOR NAVIGATION.
6. PROJECT DEPTH IS 12.0' BELOW LOW WATER DATUM.
7. ELEVATION AND SOUNDINGS ABOVE LWD ARE SHOWN THUS +2.0. ELEVATION AND SOUNDINGS BELOW LWD ARE SHOWN THUS 2.0.

IMAGERY SOURCE: ESRI

Little Lake Harbor, MI  
Little Lake Harbor  
LT\_01\_LKE\_20200714\_CS  
14 July 2020

Sheet Reference Number  
2 of 2