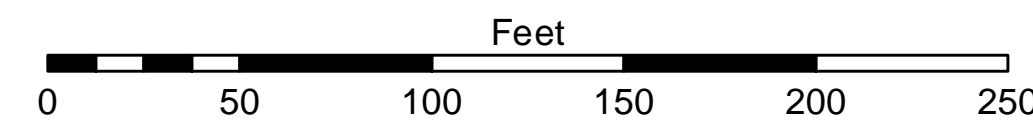


1 inch = 50 feet



- NOTES:**
- 1) THE INFORMATION DEPICTED ON THIS MAP REPRESENTS THE RESULTS OF SURVEYS MADE ON THE DATE INDICATED AND CAN ONLY BE CONSIDERED AS INDICATING THE GENERAL CONDITIONS PRESENT AT THAT TIME.
  - 2) SOUNDING DEPTHS ARE REFERENCED TO INTERNATIONAL GREAT LAKES DATUM 1985 (IGLD85) LOW WATER DATUM ELEVATION 601.1 FEET ABOVE MEAN WATER LEVEL AT RIMOUSKI, QUEBEC. WATER LEVEL READINGS WERE OBTAINED WITH RTK GPS VALUES. DEPTHS ARE MEASURED USING A TELEDYNE ECHOTRAC E20 PORTABLE SURVEY SOUNDER.
  - 3) HORIZONTAL POSITIONING IS DETERMINED USING THE REAL TIME KINEMATIC (RTK) GLOBAL NAVIGATION SATELLITE SYSTEM (GNSS). CORRECTIONS ARE FROM A BASE STATION LOCATED AT USACE CONTROL POINT 1700. THE GPS RECEIVERS ARE MANUFACTURED BY TRIMBLE, MODELS SPS751 AND R10.
  - 4) THE GRID COORDINATE SYSTEM SHOWN IS REFERENCED TO THE MICHIGAN STATE PLANE COORDINATE SYSTEM, LAMBERT PROJECTION, NORTH ZONE (2111), NORTH AMERICAN DATUM 1983 (NAD 83), US SURVEY FOOT.
  - 5) THE PROJECT DEPTHS FOR THIS AREA ARE 10.0' AND 12.0'.



**Disclaimer:** The data represents the results of data collection for a specific project. The US Army Corps of Engineers actively and routinely updates its data. The accuracy, reliability, or implied warranty of the data is not guaranteed. The user is responsible for the accuracy of the data for other than its intended purpose.

**DISCLAIMER:** The United States Government furnishes this data and the recipient accepts and uses them with the express understanding that the data is provided for informational purposes only. The data is not intended for use in any way that would imply liability, or implied warranty, or implied responsibility, or implied accuracy, or implied compliance, or implied fitness for any particular purpose of the recipient. The data is provided as is, without any warranty, express or implied, and the recipient is responsible for the accuracy, reliability, or implied warranty of the data. The recipient may not transfer this data to others without also transferring this disclaimer.

U.S. ARMY CORPS OF ENGINEERS DETROIT DISTRICT		
Submitted:	Surveyed By:	
Recommended:	Plotted By:	
Approved:	Chief, Technical Services	

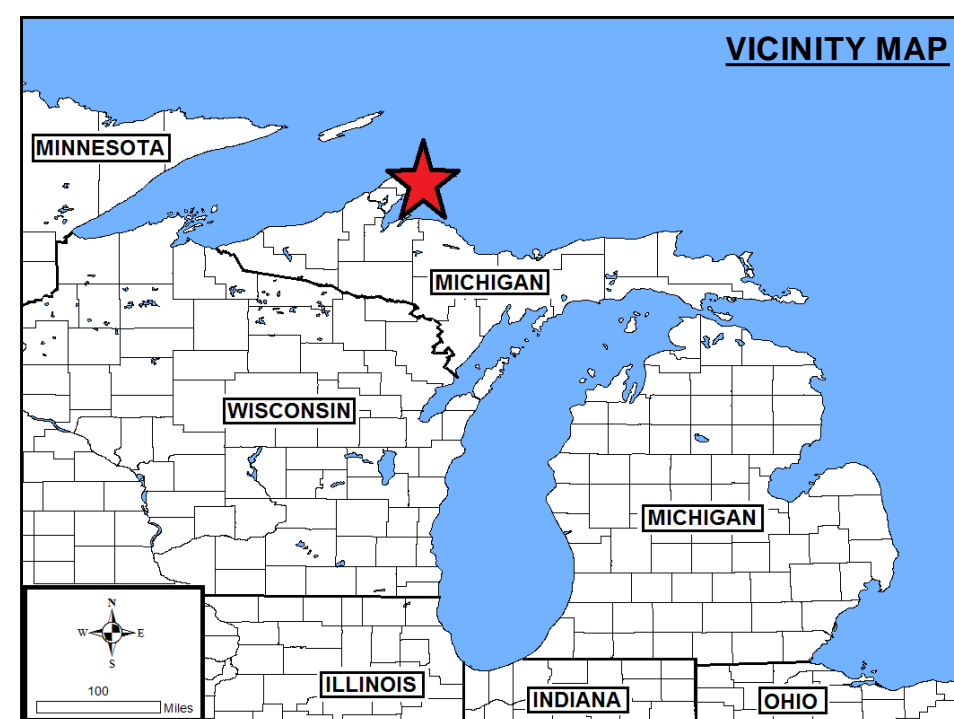
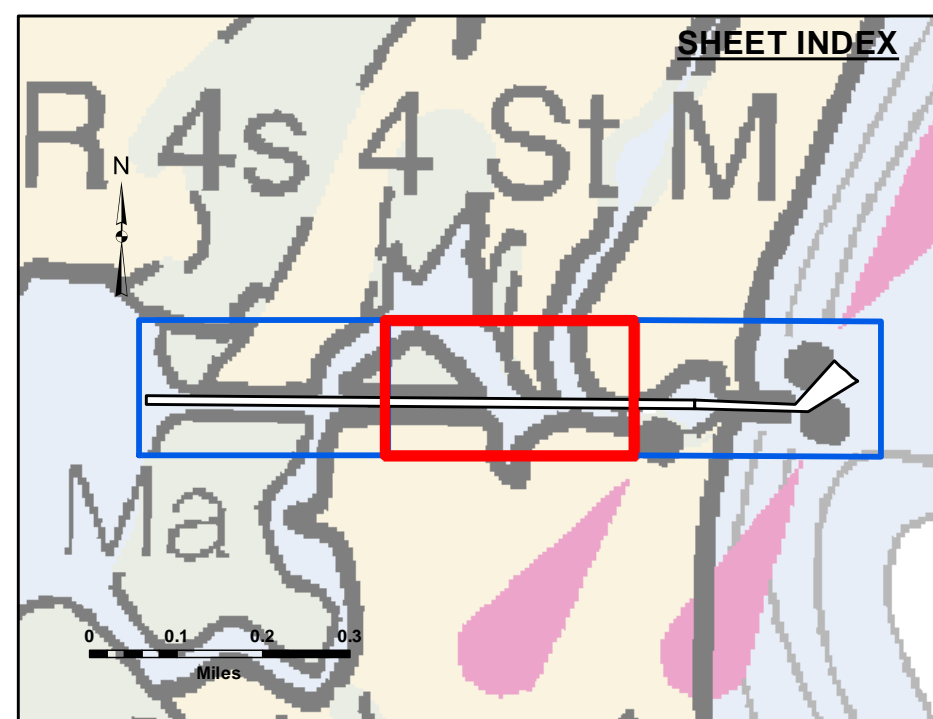
Lac La Belle Harbor, MI  
Lac La Belle Harbor  
LL\_01\_BEL\_20220524\_CS  
24 May 2022

Sheet Reference Number  
1 of 3

26,006,000



26,006,000

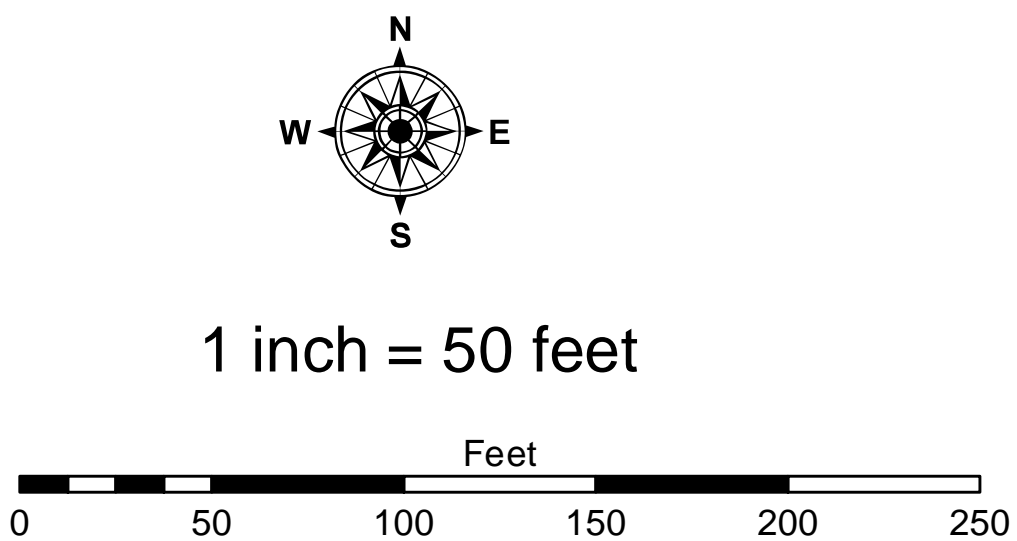


**LEGEND**

- Contour Lines
- ▭ Channel Limits

**SOUNDING LEGEND**

- Red: LESS THAN PROJECT DEPTH
- Light Blue: PROJECT DEPTH
- Light Green: PROJECT DEPTH +1'
- Medium Green: PROJECT DEPTH +2'
- Dark Green: PROJECT DEPTH +3'
- Blue: PROJECT DEPTH +4'
- Dark Blue: PROJECT DEPTH +5'



- NOTES:**
- 1) THE INFORMATION DEPICTED ON THIS MAP REPRESENTS THE RESULTS OF SURVEYS MADE ON THE DATE INDICATED AND CAN ONLY BE CONSIDERED AS INDICATING THE GENERAL CONDITIONS PRESENT AT THAT TIME.
  - 2) SOUNDING DEPTHS ARE REFERENCED TO INTERNATIONAL GREAT LAKES DATUM 1985 (IGLD85) LOW WATER DATUM ELEVATION 601.1 FEET ABOVE MEAN WATER LEVEL AT RIMOUSKI, QUEBEC. WATER LEVEL READINGS WERE OBTAINED WITH RTK GPS VALUES. DEPTHS ARE MEASURED USING A TELEDYNE ECHOTRAC E20 PORTABLE SURVEY SOUNDER.
  - 3) HORIZONTAL POSITIONING IS DETERMINED USING THE REAL TIME KINEMATIC (RTK) GLOBAL NAVIGATION SATELLITE SYSTEM (GNSS). CORRECTIONS ARE FROM A BASE STATION LOCATED AT USACE CONTROL POINT 1700. THE GPS RECEIVERS ARE MANUFACTURED BY TRIMBLE, MODELS SP5751 AND R10.
  - 4) THE GRID COORDINATE SYSTEM SHOWN IS REFERENCED TO THE MICHIGAN STATE PLANE COORDINATE SYSTEM, LAMBERT PROJECTION, NORTH ZONE (2111), NORTH AMERICAN DATUM 1983 (NAD 83), US SURVEY FOOT.
  - 5) THE PROJECT DEPTHS FOR THIS AREA ARE 10.0' AND 12.0'.



**DISCLAIMER:** The data represents the results of data collection and processing for a specific US Army Corps of Engineers activity and indicates the general existing conditions. It is not intended to be used for any other purpose, accuracy, or implied concerning the accuracy, completeness, reliability, usability, or suitability for any particular purpose of the user. The user is responsible for the accuracy of any of the application of the data for other than its intended purpose.

**DISCLAIMER:** The United States Government furnishes these data and the recipient accepts and uses them with the express understanding that the data are provided for informational purposes only and are not intended for any other purpose. The recipient may not transfer these data to others without also transferring this disclaimer.

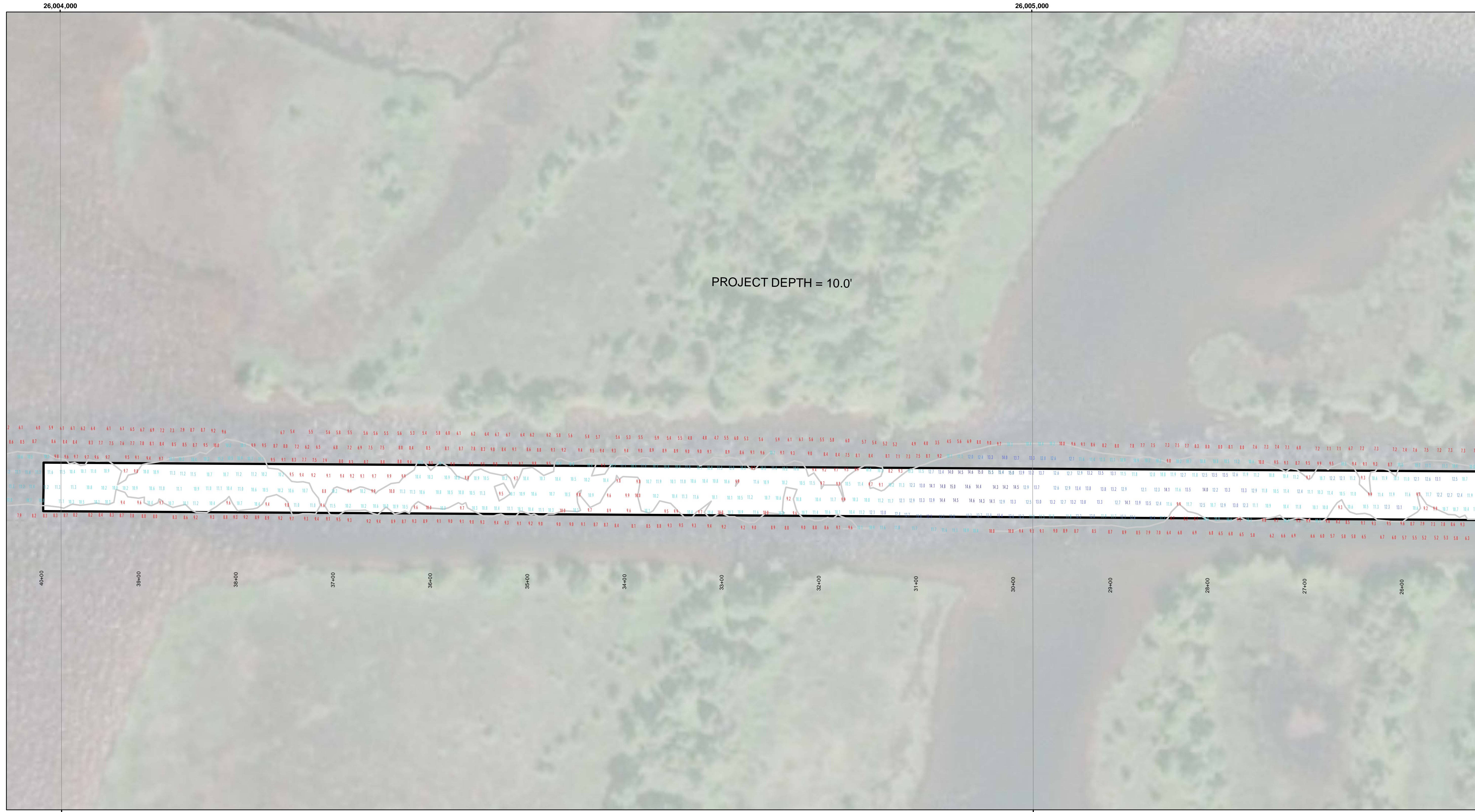
**U.S. ARMY CORPS OF ENGINEERS  
DETROIT DISTRICT**

Submitted:	Surveyed By:
Recommended:	Plotted By:
Approved:	Checked By:

Chief, Survey Section  
Chief, Technical Services

**Lac La Belle Harbor, MI**  
**Lac La Belle Harbor**  
**LL\_01\_BEL\_20220524\_CS**  
**24 May 2022**

**Sheet Reference Number**  
**2 of 3**



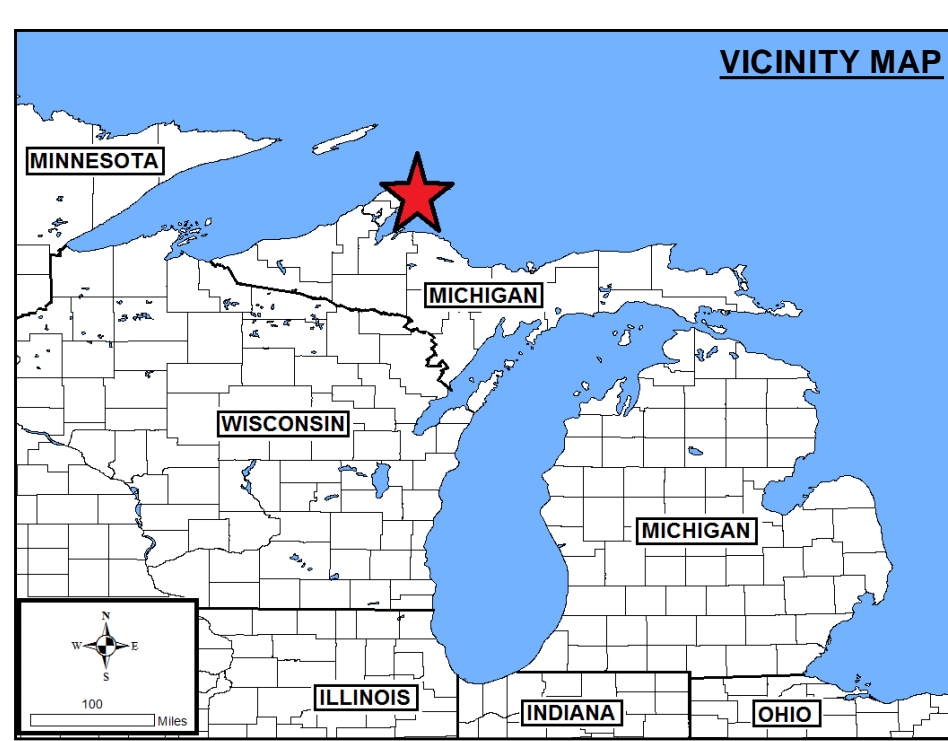
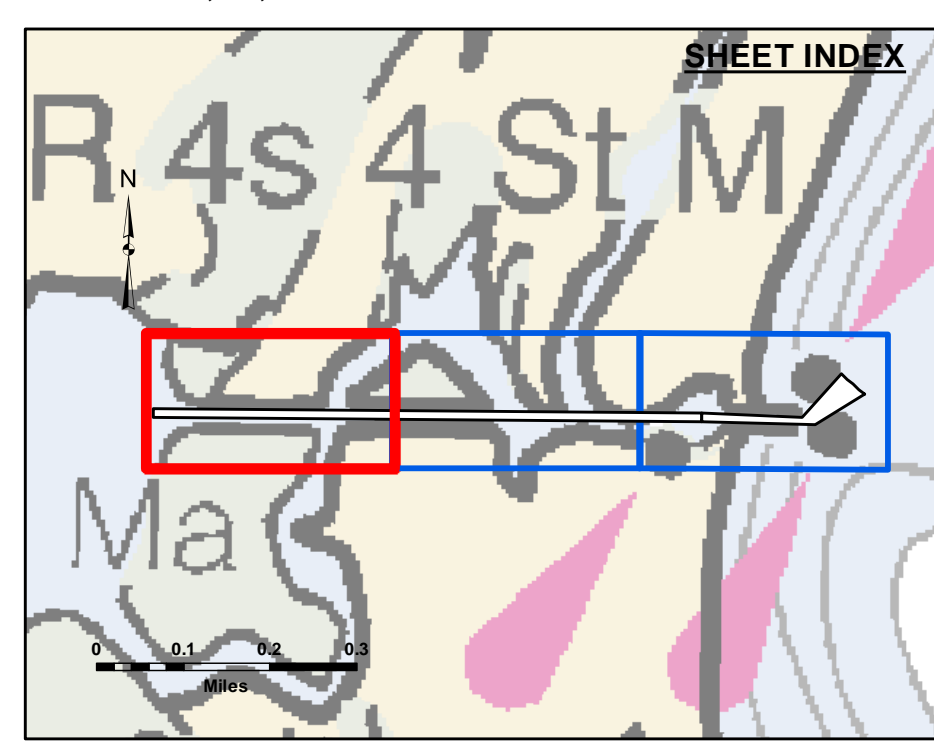
**Disclaimer:** The data represents the results of data collection/processing for a specific US Army Corps of Engineers activity and indicates the general existing conditions. It is not intended to be used for any other purpose than the one for which it was collected. The user is responsible for the accuracy, reliability, and completeness of the data for any other than its intended purpose.

**DISCLAIMER:** The United States Government furnishes this data and the recipient accepts and uses them with the express understanding that the United States Government makes no warranty, expressed or implied, concerning the accuracy, completeness, reliability, usability, or suitability for any particular purpose of the data. These data are provided to the recipient for their use under no liability whatsoever to any person by reason of any use made thereof. These data belong to the Government. Therefore the recipient may not transfer, disseminate, or otherwise use these data to others without transferring this Disclaimer.

U.S. ARMY CORPS OF ENGINEERS DETROIT DISTRICT		
Submitted:	Surveyed By:	
Recommended:	Plotted By:	
Approved:	Checked By:	

Lac La Belle Harbor, MI  
Lac La Belle Harbor  
LL\_01\_BEL\_20220524\_CS  
24 May 2022

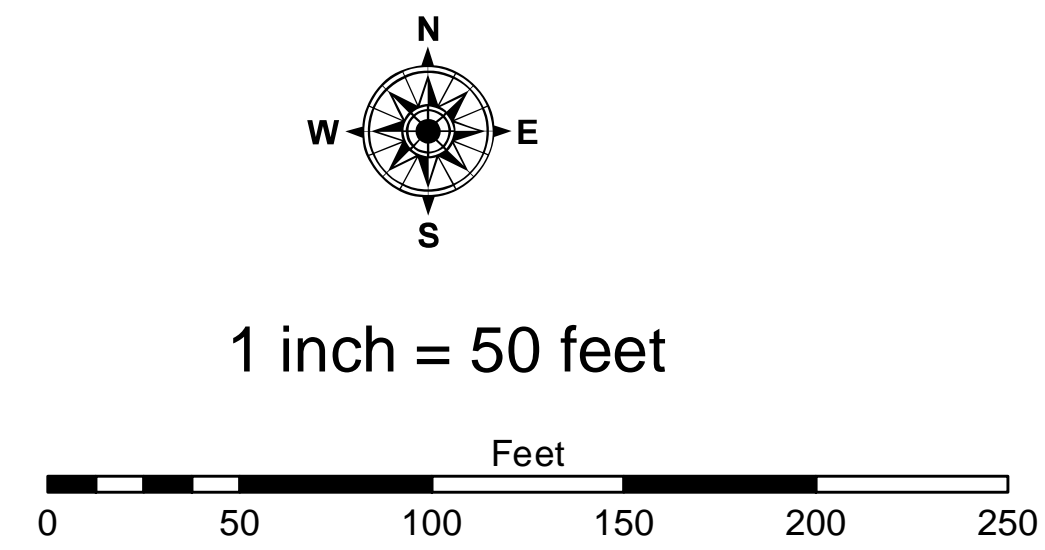
Sheet Reference Number  
3 of 3



**LEGEND**  
— Contour Lines  
▭ Channel Limits

**SOUNDING LEGEND**

Red	LESS THAN PROJECT DEPTH
Light Blue	PROJECT DEPTH
Light Green	PROJECT DEPTH +1'
Light Yellow	PROJECT DEPTH +2'
Yellow	PROJECT DEPTH +3'
Orange	PROJECT DEPTH +4'
Dark Orange	PROJECT DEPTH +5'



- NOTES:**
- 1) THE INFORMATION DEPICTED ON THIS MAP REPRESENTS THE RESULTS OF SURVEYS MADE ON THE DATE INDICATED AND CAN ONLY BE CONSIDERED AS INDICATING THE GENERAL CONDITIONS PRESENT AT THAT TIME.
  - 2) SOUNDING DEPTHS ARE REFERENCED TO INTERNATIONAL GREAT LAKES DATUM 1985 (IGLD85) LOW WATER DATUM ELEVATION 601.1 FEET ABOVE MEAN WATER LEVEL AT RIMOUSKI, QUEBEC. WATER LEVEL READINGS WERE OBTAINED WITH RTK GPS VALUES. DEPTHS ARE MEASURED USING A TELEDYNE ECHOTRAC E20 PORTABLE SURVEY SOUNDER.
  - 3) HORIZONTAL POSITIONING IS DETERMINED USING THE REAL TIME KINEMATIC (RTK) GLOBAL NAVIGATION SATELLITE SYSTEM (GNSS). CORRECTIONS ARE FROM A BASE STATION LOCATED AT USACE CONTROL POINT 1700. THE GPS RECEIVERS ARE MANUFACTURED BY TRIMBLE, MODELS SPS751 AND R10.
  - 4) THE GRID COORDINATE SYSTEM SHOWN IS REFERENCED TO THE MICHIGAN STATE PLANE COORDINATE SYSTEM, LAMBERT PROJECTION, NORTH ZONE (2111), NORTH AMERICAN DATUM 1983 (NAD 83), US SURVEY FOOT.
  - 5) THE PROJECT DEPTHS FOR THIS AREA ARE 10.0' AND 12.0'.