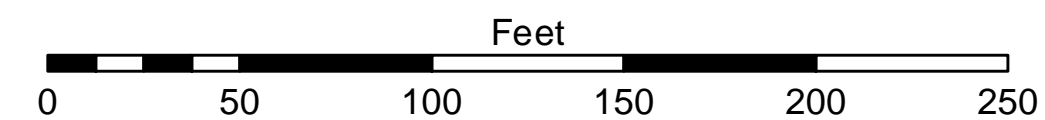


1 inch = 50 feet



- NOTES:**
- 1) THE INFORMATION DEPICTED ON THIS MAP REPRESENTS THE RESULTS OF SURVEYS MADE ON THE DATE INDICATED AND CAN ONLY BE CONSIDERED AS INDICATING THE GENERAL CONDITIONS PRESENT AT THAT TIME.
 - 2) SOUNDING DEPTHS ARE REFERENCED TO INTERNATIONAL GREAT LAKES DATUM 1985 (IGLD85) LOW WATER DATUM ELEVATION 601.1 FEET ABOVE MEAN WATER LEVEL AT RIMOUSKI, QUEBEC. WATER LEVEL READINGS WERE OBTAINED WITH RTK GPS VALUES. DEPTHS ARE MEASURED USING A TELEDYNE ECHOTRAC E20 PORTABLE SURVEY SOUNDER.
 - 3) HORIZONTAL POSITIONING IS DETERMINED USING THE REAL TIME KINEMATIC (RTK) GLOBAL NAVIGATION SATELLITE SYSTEM (GNSS). CORRECTIONS ARE FROM A BASE STATION LOCATED AT USACE CONTROL POINT 1700. THE GPS RECEIVERS ARE MANUFACTURED BY TRIMBLE, MODELS SPA751 AND R10.
 - 4) THE GRID COORDINATE SYSTEM SHOWN IS REFERENCED TO THE MICHIGAN STATE PLANE COORDINATE SYSTEM, LAMBERT PROJECTION, NORTH ZONE (211), NORTH AMERICAN DATUM 1983 (NAD 83), US SURVEY FOOT.
 - 5) THE PROJECT DEPTHS FOR THIS AREA ARE 10.0' AND 12.0'.



Disclaimer: The data represents the results of data collection/processing for a specific US Army Corps of Engineers activity and indicates the general existing conditions. Engineers assume no liability for the accuracy, completeness, or implied warranty of the data. The user is responsible for the accuracy, completeness, or implied warranty of the data for other than its intended purpose.

DISCLAIMER: The United States Government furnishes these data and the recipient accepts and uses them with the express understanding that the United States Government makes no warranty, express, implied, or otherwise, concerning the accuracy, completeness, or implied warranty of the data. The recipient may not transfer these data to others without also transferring this disclaimer.

| | | |
|--|---------------------------|--|
| U.S. ARMY CORPS OF ENGINEERS DETROIT DISTRICT | | |
| Submitted: | Surveyed By: | |
| Recommended: | Plotted By: | |
| Approved: | Chief, Survey Section | |
| | Chief, Technical Services | |

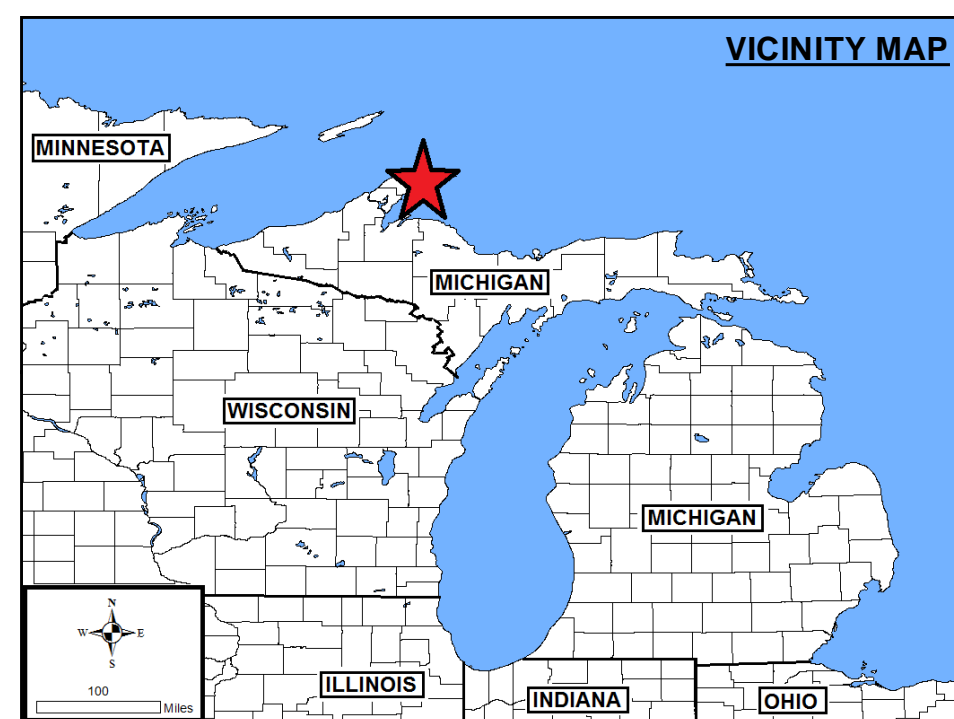
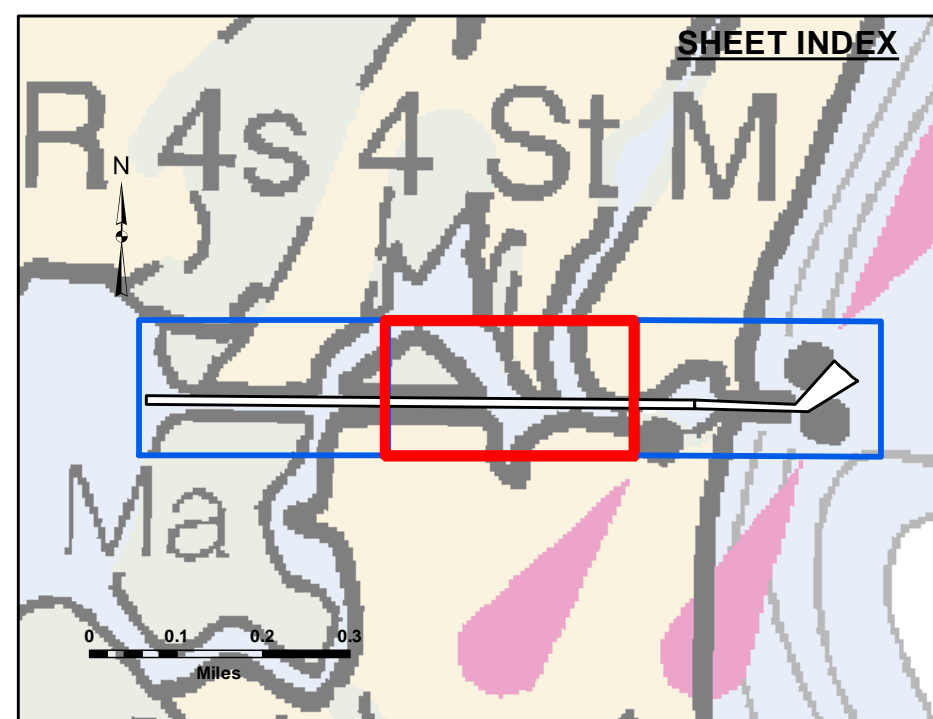
Lac La Belle Harbor, MI
Lac La Belle Harbor
LL_01_BEL_20210727_CS
27 July 2021

Sheet Reference Number
1 of 3

26,006,000



26,006,000

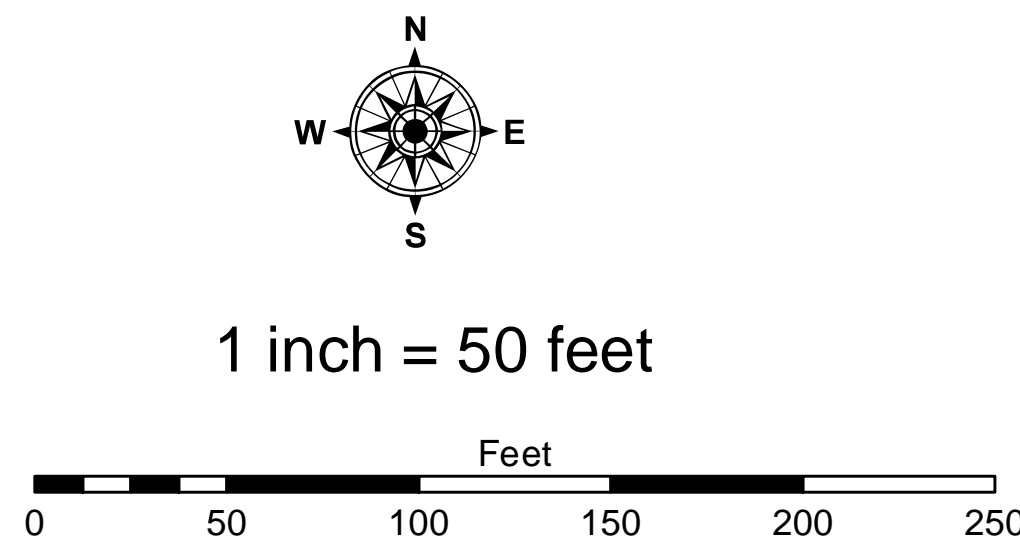


LEGEND

- Contour Lines
- Channel Limits

SOUNDING LEGEND

- LESS THAN PROJECT DEPTH
- PROJECT DEPTH
- PROJECT DEPTH +1'
- PROJECT DEPTH +2'
- PROJECT DEPTH +3'
- PROJECT DEPTH +4'
- PROJECT DEPTH +5'



- NOTES:**
- 1) THE INFORMATION DEPICTED ON THIS MAP REPRESENTS THE RESULTS OF SURVEYS MADE ON THE DATE INDICATED AND CAN ONLY BE CONSIDERED AS INDICATING THE GENERAL CONDITIONS PRESENT AT THAT TIME.
 - 2) SOUNDING DEPTHS ARE REFERENCED TO INTERNATIONAL GREAT LAKES DATUM 1985 (IGLD85) LOW WATER DATUM ELEVATION 601.1 FEET ABOVE MEAN WATER LEVEL AT RIMOUSKI, QUEBEC. WATER LEVEL READINGS WERE OBTAINED WITH RTK GPS VALUES. DEPTHS ARE MEASURED USING A TELEDYNE ECHOTRAC E20 PORTABLE SURVEY SOUNDER.
 - 3) HORIZONTAL POSITIONING IS DETERMINED USING THE REAL TIME KINEMATIC (RTK) GLOBAL NAVIGATION SATELLITE SYSTEM (GNSS). CORRECTIONS ARE FROM A BASE STATION LOCATED AT USACE CONTROL POINT 1700. THE GPS RECEIVERS ARE MANUFACTURED BY TRIMBLE, MODELS SPA751 AND R10.
 - 4) THE GRID COORDINATE SYSTEM SHOWN IS REFERENCED TO THE MICHIGAN STATE PLANE COORDINATE SYSTEM, LAMBERT PROJECTION, NORTH ZONE (2111), NORTH AMERICAN DATUM 1983 (NAD 83), US SURVEY FOOT.
 - 5) THE PROJECT DEPTHS FOR THIS AREA ARE 10.0' AND 12.0'.



DISCLAIMER: The data represents the results of data collection and processing for a specific US Army Corps of Engineers activity and indicates the general existing conditions. The user is responsible for the accuracy, completeness, and reliability of the data for other than its intended purpose. The US Army Corps of Engineers does not warrant the accuracy, completeness, or reliability of the data for any other purpose. The user is responsible for the accuracy, completeness, and reliability of the data for any other purpose. The user is responsible for the accuracy, completeness, and reliability of the data for any other purpose. The user is responsible for the accuracy, completeness, and reliability of the data for any other purpose.

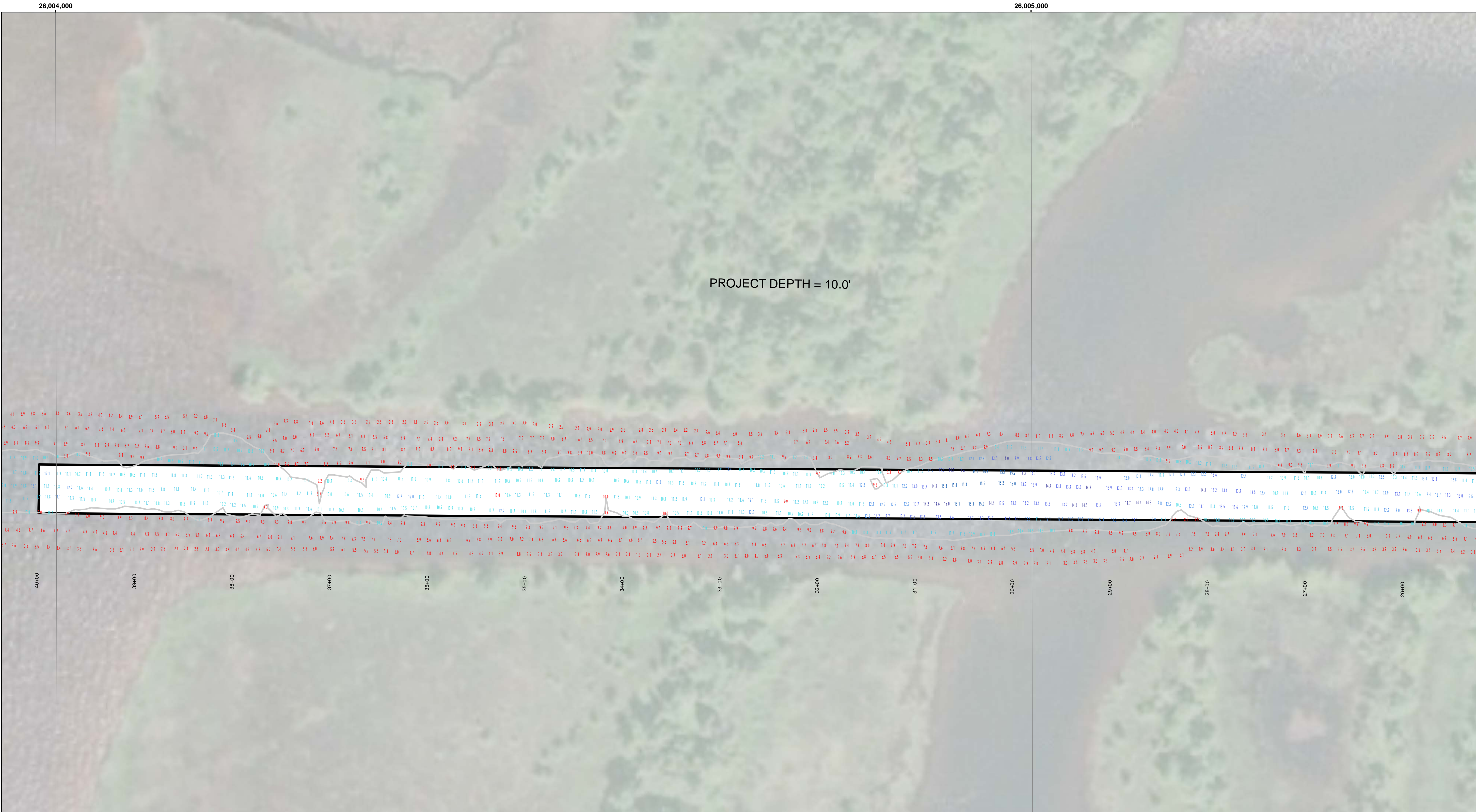
**U.S. ARMY CORPS OF ENGINEERS
DETROIT DISTRICT**

| | |
|--------------|--------------|
| Submitted: | Surveyed By: |
| Recommended: | Plotted By: |
| Approved: | Checked By: |

Chief, Survey Section
Chief, Technical Services

Lac La Belle Harbor, MI
Lac La Belle Harbor
LL_01_BEL_20210727_CS
27 July 2021

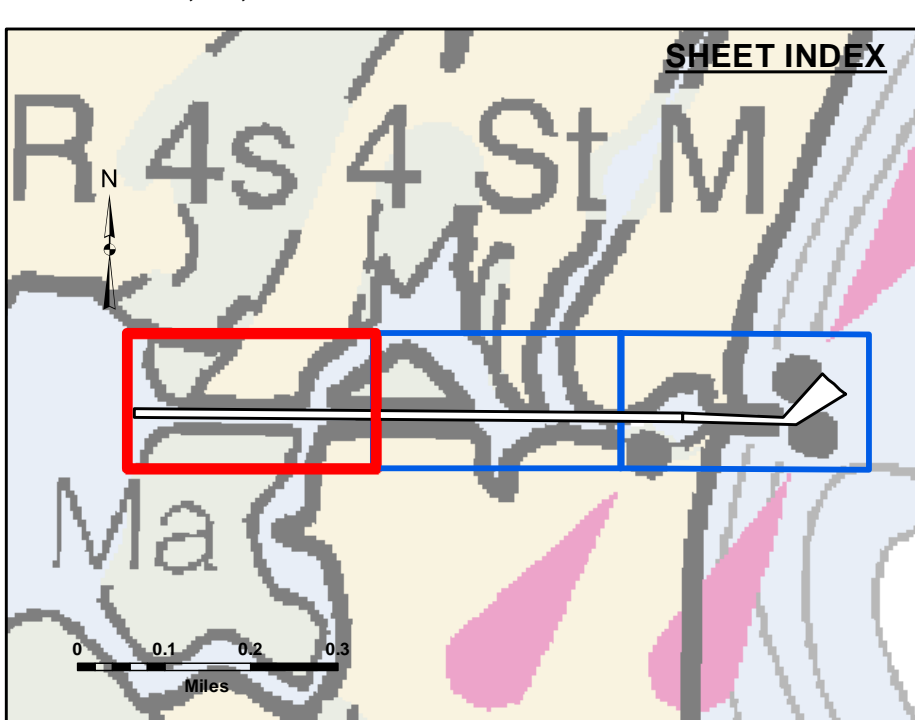
Sheet Reference Number
2 of 3



Disclaimer: The data represents the results of data collection for a specific project. The US Army Corps of Engineers does not warrant the accuracy, completeness, or reliability of the data for other than its intended purpose. The user is responsible for the accuracy of any application of the data for other than its intended purpose.

Access Constraints: The United States Government furnishes this data and the recipient accepts and uses them with the express understanding that the data is provided for informational purposes only. The data is not to be used for any purpose other than that for which it was provided. The recipient may not transfer, disseminate, or otherwise use the data for any purpose other than that for which it was provided. The recipient may not transfer these data to others without also transferring this disclaimer.

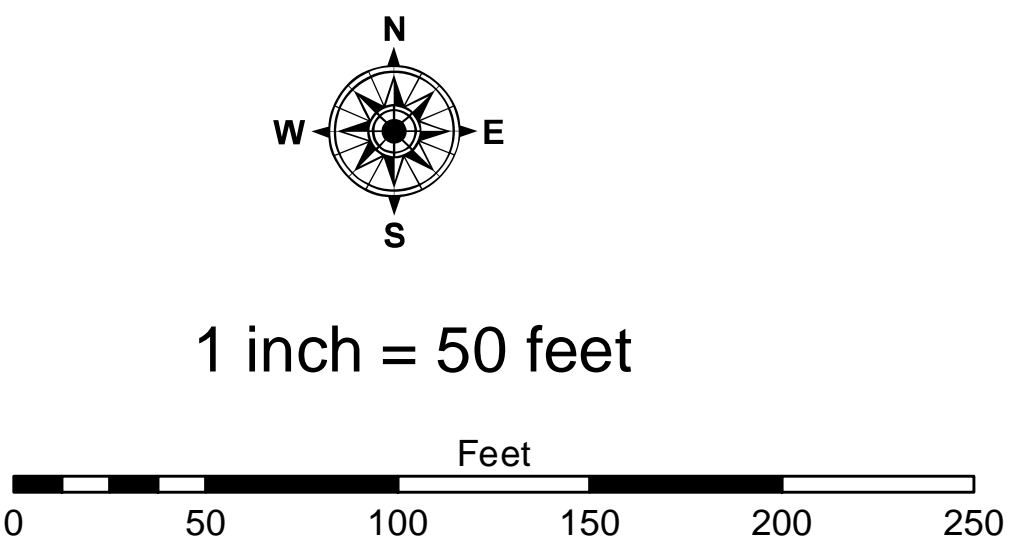
| | | |
|--|--------------|--|
| U.S. ARMY CORPS OF ENGINEERS DETROIT DISTRICT | | |
| Submitted By: | Surveyed By: | |
| Recommended By: Chief, Survey Section | Plotted By: | |
| Approved: | Checked By: | |



LEGEND
— Contour Lines
□ Channel Limits

SOUNDING LEGEND

| | |
|--------------|-------------------------|
| Red | LESS THAN PROJECT DEPTH |
| Light Blue | PROJECT DEPTH |
| Light Green | PROJECT DEPTH +1' |
| Light Yellow | PROJECT DEPTH +2' |
| Light Orange | PROJECT DEPTH +3' |
| Light Purple | PROJECT DEPTH +4' |
| Dark Purple | PROJECT DEPTH +5' |



- NOTES:**
- 1) THE INFORMATION DEPICTED ON THIS MAP REPRESENTS THE RESULTS OF SURVEYS MADE ON THE DATE INDICATED AND CAN ONLY BE CONSIDERED AS INDICATING THE GENERAL CONDITIONS PRESENT AT THAT TIME.
 - 2) SOUNDING DEPTHS ARE REFERENCED TO INTERNATIONAL GREAT LAKES DATUM 1985 (IGLD85) LOW WATER DATUM ELEVATION 601.1 FEET ABOVE MEAN WATER LEVEL AT RIMOUSKI, QUEBEC. WATER LEVEL READINGS WERE OBTAINED WITH RTK GPS VALUES. DEPTHS ARE MEASURED USING A TELEDYNE ECHOTRAC E20 PORTABLE SURVEY SOUNDER.
 - 3) HORIZONTAL POSITIONING IS DETERMINED USING THE REAL TIME KINEMATIC (RTK) GLOBAL NAVIGATION SATELLITE SYSTEM (GNSS). CORRECTIONS ARE FROM A BASE STATION LOCATED AT USACE CONTROL POINT 1700. THE GPS RECEIVERS ARE MANUFACTURED BY TRIMBLE, MODELS SPA751 AND R10.
 - 4) THE GRID COORDINATE SYSTEM SHOWN IS REFERENCED TO THE MICHIGAN STATE PLANE COORDINATE SYSTEM, LAMBERT PROJECTION, NORTH ZONE (2111), NORTH AMERICAN DATUM 1983 (NAD 83), US SURVEY FOOT.
 - 5) THE PROJECT DEPTHS FOR THIS AREA ARE 10.0' AND 12.0'.

Lac La Belle Harbor, MI
Lac La Belle Harbor
LL_01_BEL_20210727_CS
27 July 2021

Sheet Reference Number
3 of 3