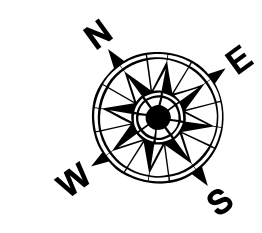
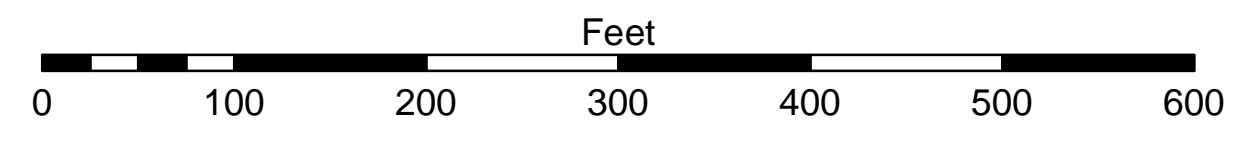


- LEGEND**
- Cable Submarine
 - - - Cable Overhead
 - Placement Area
 - ⊥ Beacon, General
 - Contour Lines
 - ▭ Channel Limits

- SOUNDING LEGEND**
- LESS THAN PROJECT DEPTH
 - PROJECT DEPTH
 - PROJECT DEPTH +1'
 - PROJECT DEPTH +2'
 - PROJECT DEPTH +3'
 - PROJECT DEPTH +4'
 - PROJECT DEPTH +5'



1 inch = 100 feet



NOTES: THE SOUNDINGS AND ASSOCIATED INFORMATION REPRESENTED HEREIN ARE THE RESULT OF SURVEYS MADE ON THE DATE AS INDICATED AND CAN ONLY BE CONSIDERED REPRESENTATIVE OF THE GENERAL CONDITIONS EXISTING AT THE TIME OF SURVEY.

THE SOUNDINGS DEPICTED HEREIN ARE EXPRESSED IN U.S. SURVEY FEET AND TENTHS THEREOF AND ARE REFERENCED TO THE FOLLOWING DATUMS:
 HORIZONTAL: MICHIGAN STATE PLANE COORDINATE SYSTEM, MICHIGAN SOUTH ZONE #2113, NORTH AMERICAN DATUM (NAD) OF 1983.
 VERTICAL: INTERNATIONAL GREAT LAKES DATUM (IGLD) OF 1985. LWD=577.5

THE ABOVE SURVEY WAS CONDUCTED USING THE U.S.A.C.E. SURVEY VESSEL BOULTON EMPLOYING THE FOLLOWING COMPONENTS:

POSITIONING: APPLANIX POS-MV W/VRS-RTK
 MOTION COMPENSATION: POS-MV MRU
 SONAR: QOON CIV-300
 SOFTWARE: HYPACK 2017

TIDE CORRECTION VALUES REFERENCED FROM A PAINT MARK ON THE SEAWALL DESCRIBED AS 'TBM STEEL CORNER,' LOCATED ON TOP OF A STEEL WALL AND AT THE DOWNSTREAM END OF SAID WALL. IGLD 85 ELEVATION = 582.18'.

IMAGERY SOURCED FROM: 2014 MICHIGAN NAIP IMAGERY



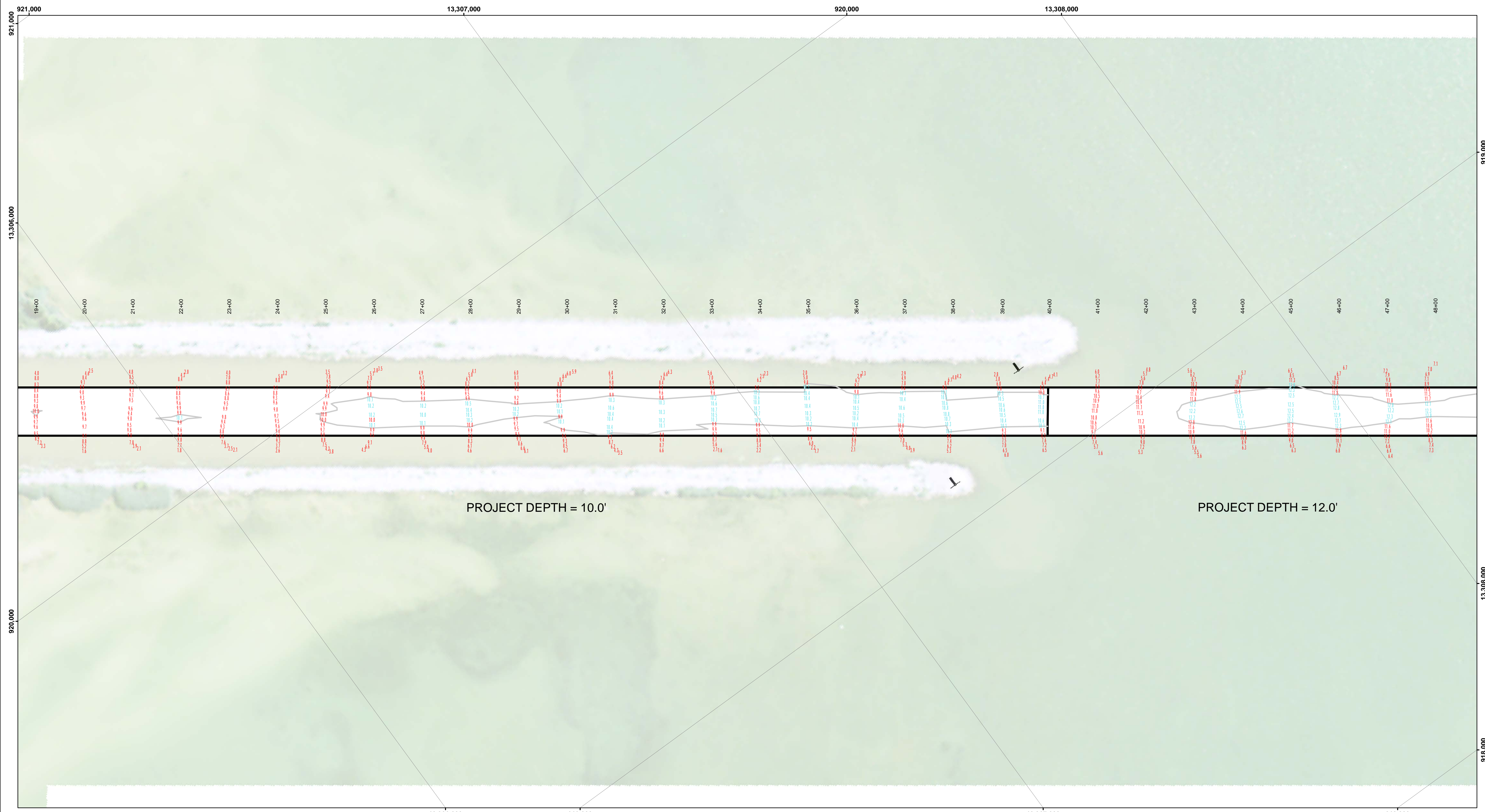
DISCLAIMER: The data represented by the results of data collection/processing for a specific US Army Corps of Engineers activity and indicates the general existing conditions. The user is responsible for the results of any of the application of the data for other than its intended purpose.

ACCESS CONSTRAINTS: The United States Government furnishes these data and the recipient accepts and uses them with the express understanding that the data are not to be used for any purpose other than that for which they were provided. The recipient may not transfer these data to others without also transferring the Disclaimer.

U.S. ARMY CORPS OF ENGINEERS DETROIT DISTRICT		
Submitted:	Surveyed By:	
Recommended:	Plotted By:	
Approved:	Chief, Survey Section	Chief, Technical Services

Point Lookout Harbor, MI (AuGres)
Point Lookout Harbor
LK_01_OUT_20230606_CS
06 June 2023

Sheet Reference Number
1 of 6

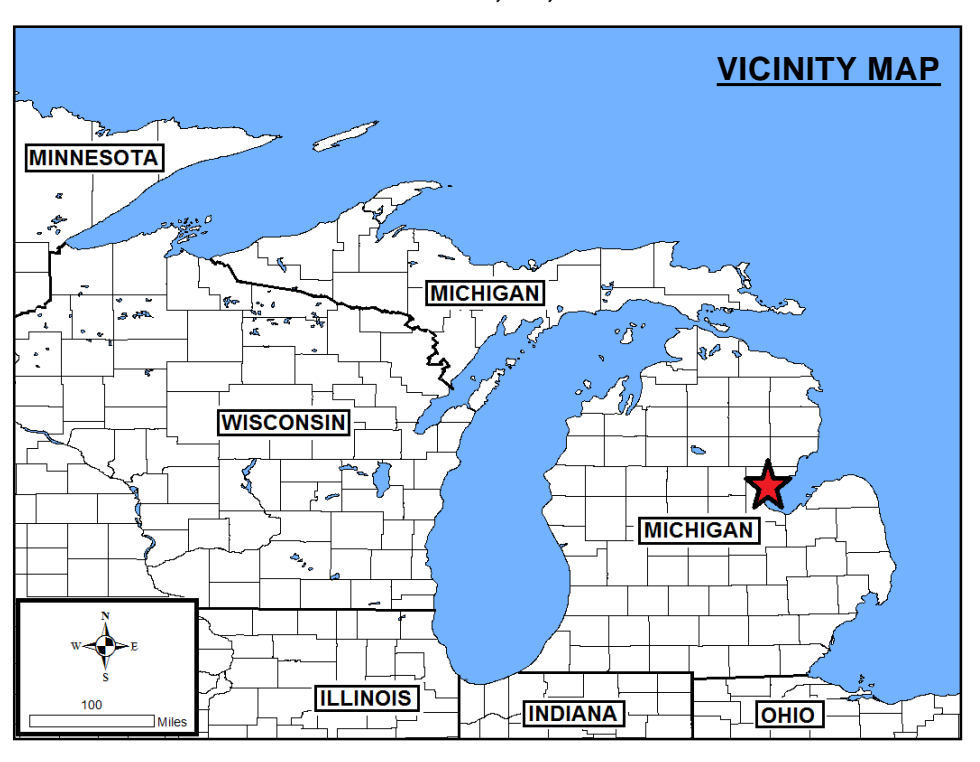
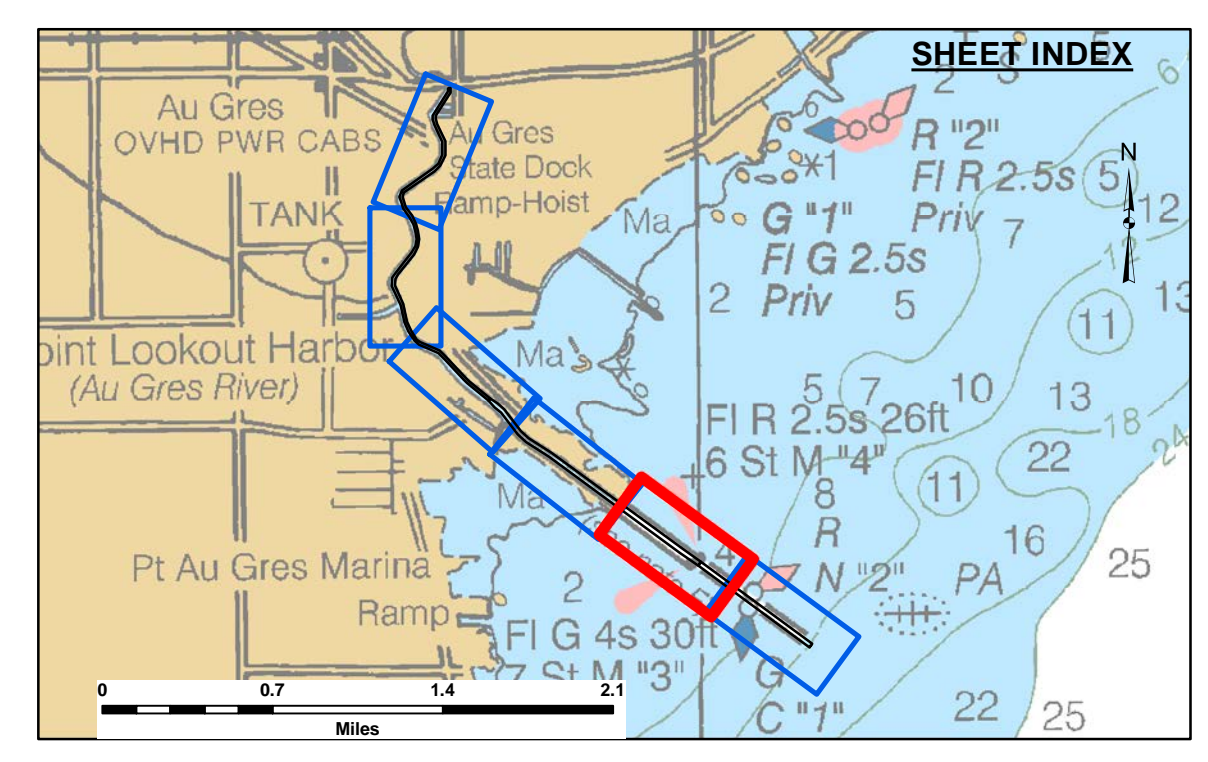


DISCLAIMER: The data represented by the results of data collection/processing for a specific US Army Corps of Engineers activity and indicates the general existing conditions. The user is responsible for the results of any of the application of the data for other than its intended purpose.

ACCESS CONSTRAINTS: The United States Government furnishes these data and the recipient accepts and uses them with the express understanding that the data are not to be used for any purpose other than that for which they were provided. The recipient may not transfer these data to others without also transferring the Disclaimer.

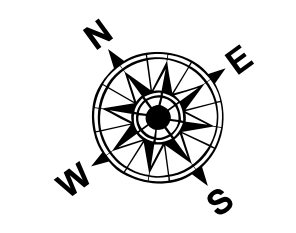
U.S. ARMY CORPS OF ENGINEERS DETROIT DISTRICT		
Submitted:	Surveyed By:	
Recommended:	Plotted By:	
Approved:	Chief, Survey Section	
	Chief, Technical Services	

Point Lookout Harbor, MI (AuGres)
Point Lookout Harbor
LK_01_OUT_20230606_CS
06 June 2023

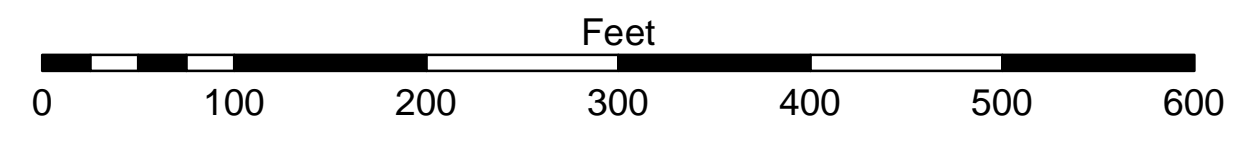


- LEGEND**
- Cable Submarine
 - - - Cable Overhead
 - ▭ Placement Area
 - ⊥ Beacon, General
 - Contour Lines
 - ▭ Channel Limits

- SOUNDING LEGEND**
- LESS THAN PROJECT DEPTH
 - PROJECT DEPTH
 - PROJECT DEPTH +1'
 - PROJECT DEPTH +2'
 - PROJECT DEPTH +3'
 - PROJECT DEPTH +4'
 - PROJECT DEPTH +5'



1 inch = 100 feet



NOTES: THE SOUNDINGS AND ASSOCIATED INFORMATION REPRESENTED HEREIN ARE THE RESULT OF SURVEYS MADE ON THE DATE AS INDICATED AND CAN ONLY BE CONSIDERED REPRESENTATIVE OF THE GENERAL CONDITIONS EXISTING AT THE TIME OF SURVEY.

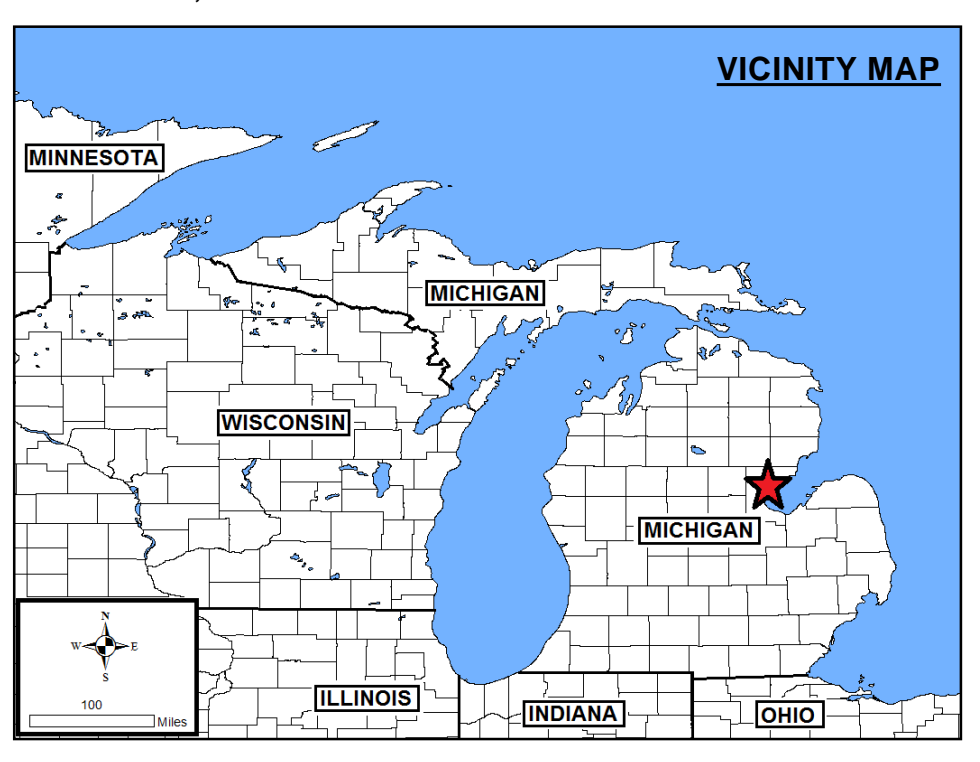
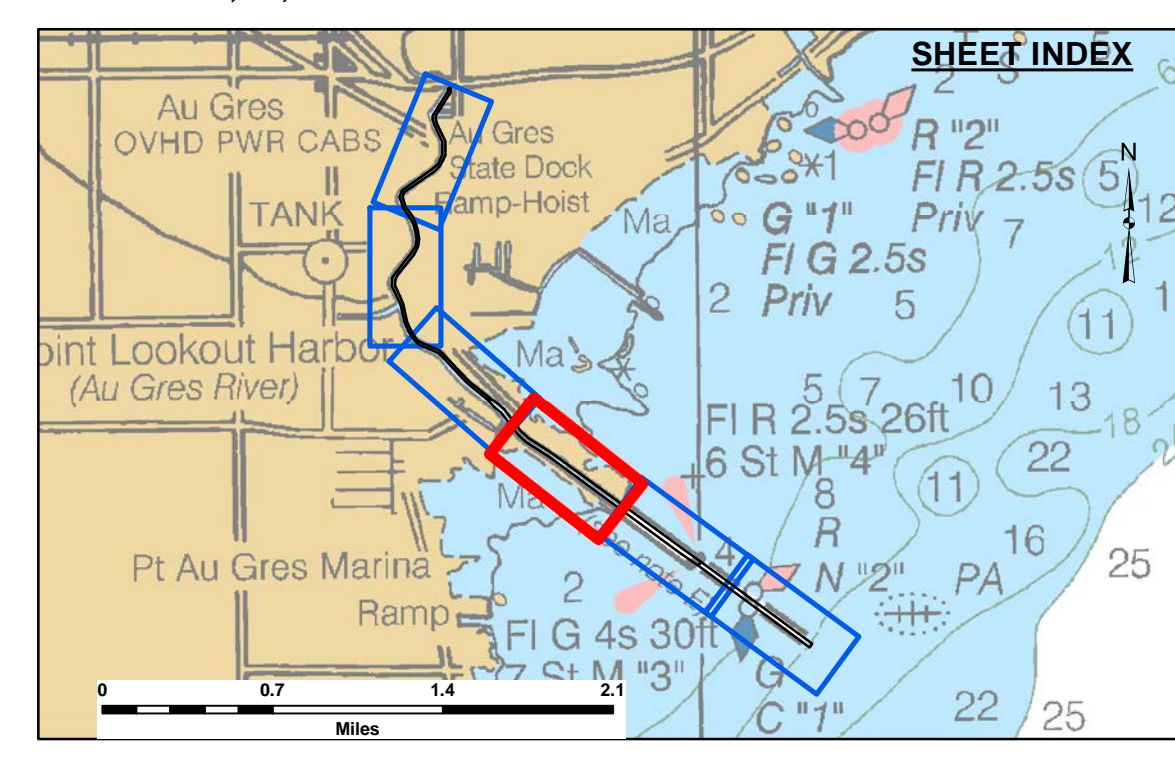
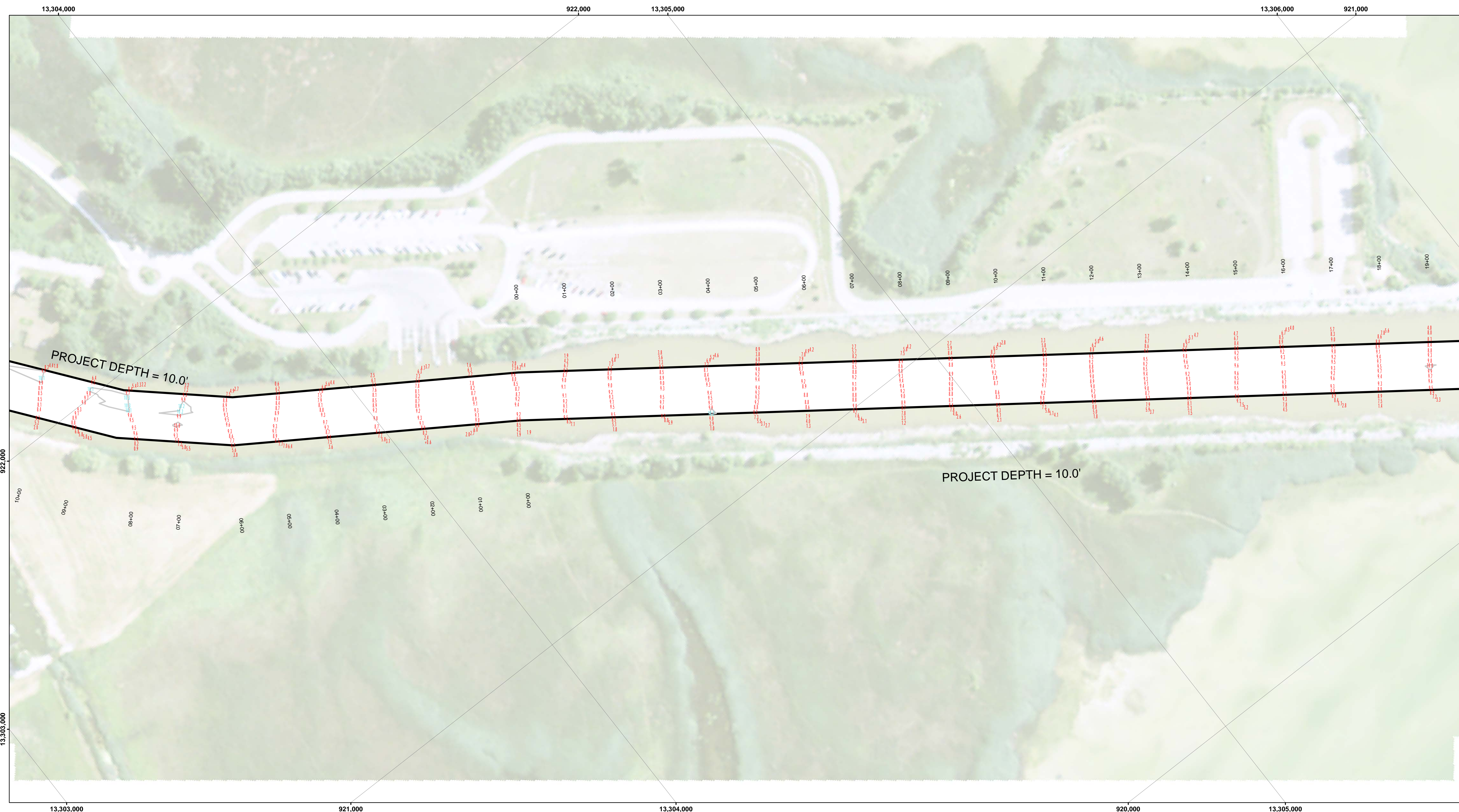
THE SOUNDINGS DEPICTED HEREIN ARE EXPRESSED IN U.S. SURVEY FEET AND TENTHS THEREOF AND ARE REFERENCED TO THE FOLLOWING DATUMS:
 HORIZONTAL: MICHIGAN STATE PLANE COORDINATE SYSTEM, MICHIGAN SOUTH ZONE #2113, NORTH AMERICAN DATUM (NAD) OF 1983.
 VERTICAL: INTERNATIONAL GREAT LAKES DATUM (IGLD) OF 1985. LWD=577.5

THE ABOVE SURVEY WAS CONDUCTED USING THE U.S.A.C.E. SURVEY VESSEL BOULTON EMPLOYING THE FOLLOWING COMPONENTS:
 POSITIONING: APPLANIX POS-MV W/VRS-RTK
 MOTION COMPENSATION: POS-MV MRU
 SONAR: QOON CIV-300
 SOFTWARE: HYPACK 2017

TIDE CORRECTION VALUES REFERENCED FROM A PAINT MARK ON THE SEAWALL DESCRIBED AS 'TBM STEEL CORNER' LOCATED ON TOP OF A STEEL WALL AND AT THE DOWNSTREAM END OF SAID WALL. IGLD 85 ELEVATION = 582.18'.

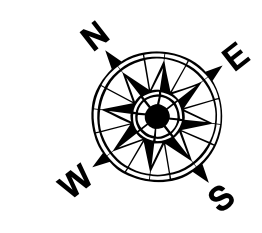
IMAGERY SOURCED FROM: 2014 MICHIGAN NAIP IMAGERY

Sheet Reference Number
2 of 6

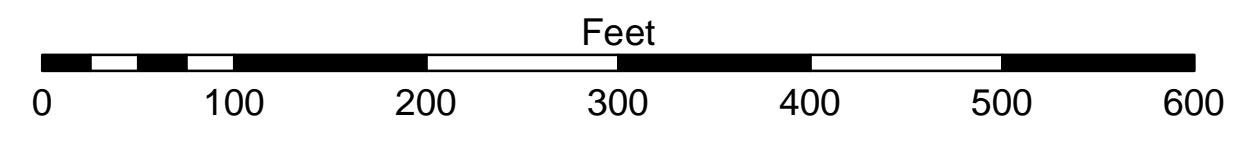


- LEGEND**
- Cable Submarine
 - - - Cable Overhead
 - Placement Area
 - ⊥ Beacon, General
 - Contour Lines
 - ▭ Channel Limits

- SOUNDING LEGEND**
- LESS THAN PROJECT DEPTH
 - PROJECT DEPTH
 - PROJECT DEPTH +1'
 - PROJECT DEPTH +2'
 - PROJECT DEPTH +3'
 - PROJECT DEPTH +4'
 - PROJECT DEPTH +5'



1 inch = 100 feet



NOTES: THE SOUNDINGS AND ASSOCIATED INFORMATION REPRESENTED HEREIN ARE THE RESULT OF SURVEYS MADE ON THE DATE AS INDICATED AND CAN ONLY BE CONSIDERED REPRESENTATIVE OF THE GENERAL CONDITIONS EXISTING AT THE TIME OF SURVEY.

THE SOUNDINGS DEPICTED HEREIN ARE EXPRESSED IN U.S. SURVEY FEET AND TENTHS THEREOF AND ARE REFERENCED TO THE FOLLOWING DATUMS:
 HORIZONTAL: MICHIGAN STATE PLANE COORDINATE SYSTEM, MICHIGAN SOUTH ZONE #2113, NORTH AMERICAN DATUM (NAD) OF 1983.
 VERTICAL: INTERNATIONAL GREAT LAKES DATUM (IGLD) OF 1985. LWD=577.5

THE ABOVE SURVEY WAS CONDUCTED USING THE U.S.A.C.E. SURVEY VESSEL BOULTON EMPLOYING THE FOLLOWING COMPONENTS:

POSITIONING: APPLANIX POS-MV W/VRS-RTK
 MOTION COMPENSATION: POS-MV MRU
 SONAR: QOON CIV-300
 SOFTWARE: HYPACK 2017

TIDE CORRECTION VALUES REFERENCED FROM A PAINTE MARK ON THE SEAWALL DESCRIBED AS 'B.M. STEEL CORNER', LOCATED ON TOP OF A STEEL WALL AND AT THE DOWNSTREAM END OF SAID WALL. IGLD 85 ELEVATION = 582.18'.

IMAGERY SOURCED FROM: 2014 MICHIGAN NAIP IMAGERY



DISCLAIMER: The United States Government furnishes these data and the recipient accepts and uses them with the express understanding that the data are not to be used for any purpose other than that for which they were provided. The United States Government makes no warranty, expressed or implied, concerning the accuracy, completeness, reliability, or suitability for any particular purpose of the data. The recipient shall be responsible for the results of any application of the data for other than its intended purpose. The recipient may not transfer these data to others without also transferring this Disclaimer.

U.S. ARMY CORPS OF ENGINEERS DETROIT DISTRICT		
Submitted:	Surveyed By:	
Recommended:	Plotted By:	
Approved:	Chief, Survey Station	Chief, Technical Services

Point Lookout Harbor, MI (AuGres)
Point Lookout Harbor
LK_01_OUT_20230606_CS
06 June 2023

Sheet Reference Number
3 of 6

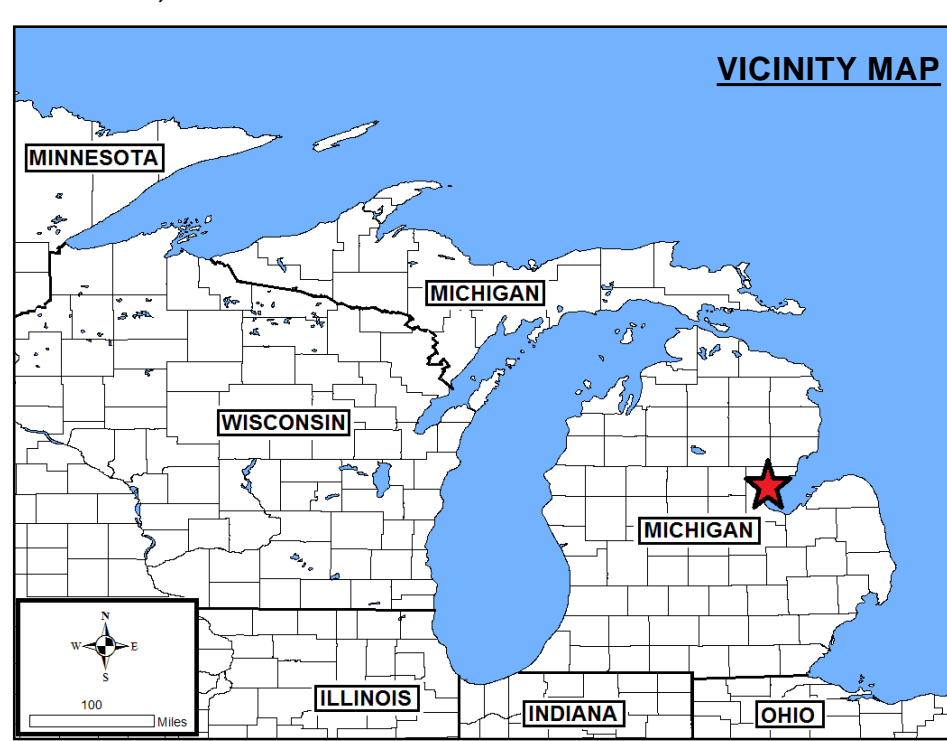
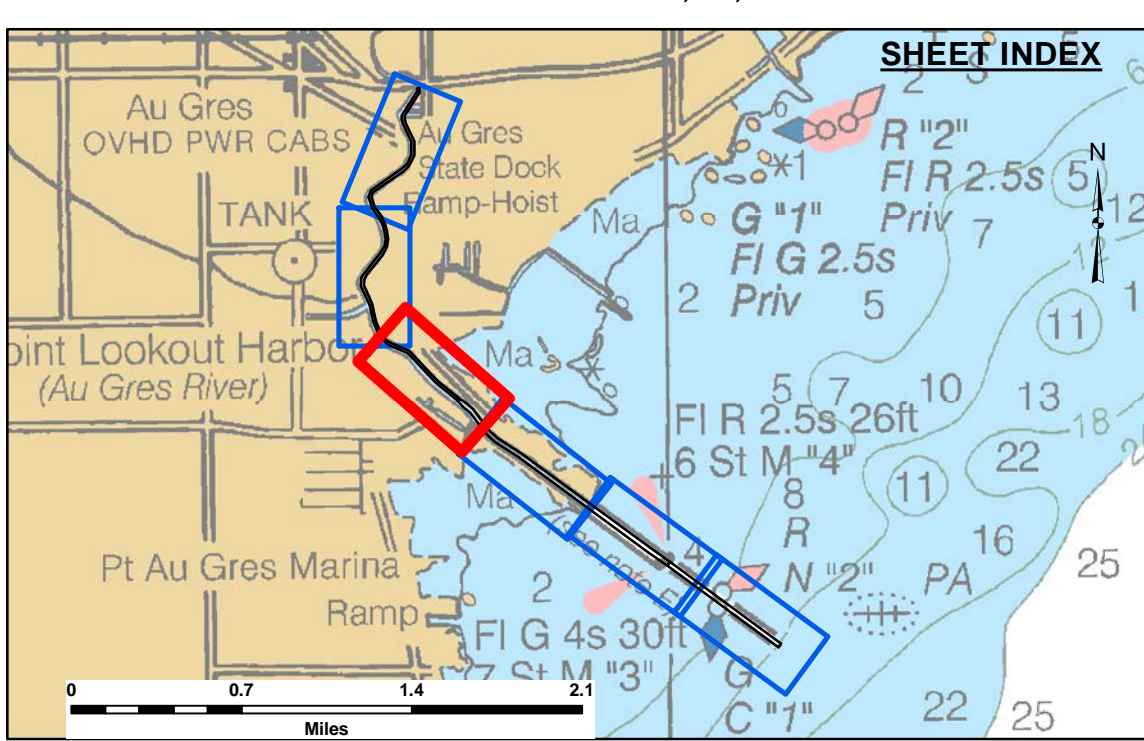


Disclaimer: The data represented by the results of data collection and processing for a specific US Army Corps of Engineers activity and indicates the general existing conditions. The user is responsible for the results of any of the application of the data for other than its intended purpose.

Access Constraints: The United States Government furnishes these data and the recipient accepts and uses them with the express understanding that the data are not to be used for any purpose other than that for which they were provided. The recipient may not transfer these data to others without also transferring this Disclaimer.

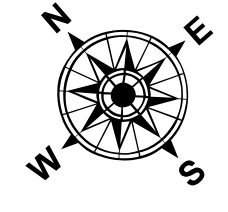
U.S. ARMY CORPS OF ENGINEERS DETROIT DISTRICT		
Submitted:	Surveyed By:	Checked By:
Recommended:	Plotted By:	
Approved:	Chief, Survey Section	Chief, Technical Services

Point Lookout Harbor, MI (AuGres)
Point Lookout Harbor
LK_01_OUT_20230606_CS
06 June 2023

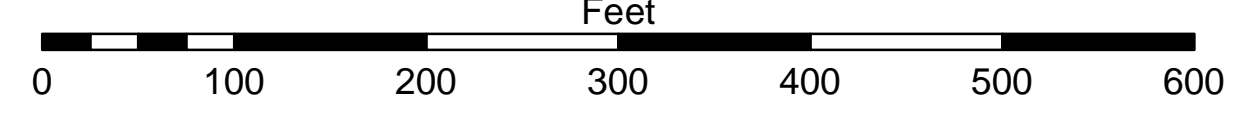


- LEGEND**
- Cable Submarine
 - - - Cable Overhead
 - Placement Area
 - ⊥ Beacon, General
 - Contour Lines
 - ▭ Channel Limits

- SOUNDING LEGEND**
- LESS THAN PROJECT DEPTH
 - PROJECT DEPTH
 - PROJECT DEPTH +1'
 - PROJECT DEPTH +2'
 - PROJECT DEPTH +3'
 - PROJECT DEPTH +4'
 - PROJECT DEPTH +5'



1 inch = 100 feet



NOTES: THE SOUNDINGS AND ASSOCIATED INFORMATION REPRESENTED HEREIN ARE THE RESULT OF SURVEYS MADE ON THE DATE AS INDICATED AND CAN ONLY BE CONSIDERED REPRESENTATIVE OF THE GENERAL CONDITIONS EXISTING AT THE TIME OF SURVEY.

THE SOUNDINGS DEPICTED HEREIN ARE EXPRESSED IN U.S. SURVEY FEET AND TENTHS THEREOF AND ARE REFERENCED TO THE FOLLOWING DATUMS:
 HORIZONTAL: MICHIGAN STATE PLANE COORDINATE SYSTEM, MICHIGAN SOUTH ZONE #2113, NORTH AMERICAN DATUM (NAD) OF 1983.
 VERTICAL: INTERNATIONAL GREAT LAKES DATUM (IGLD) OF 1985. LWD=577.5

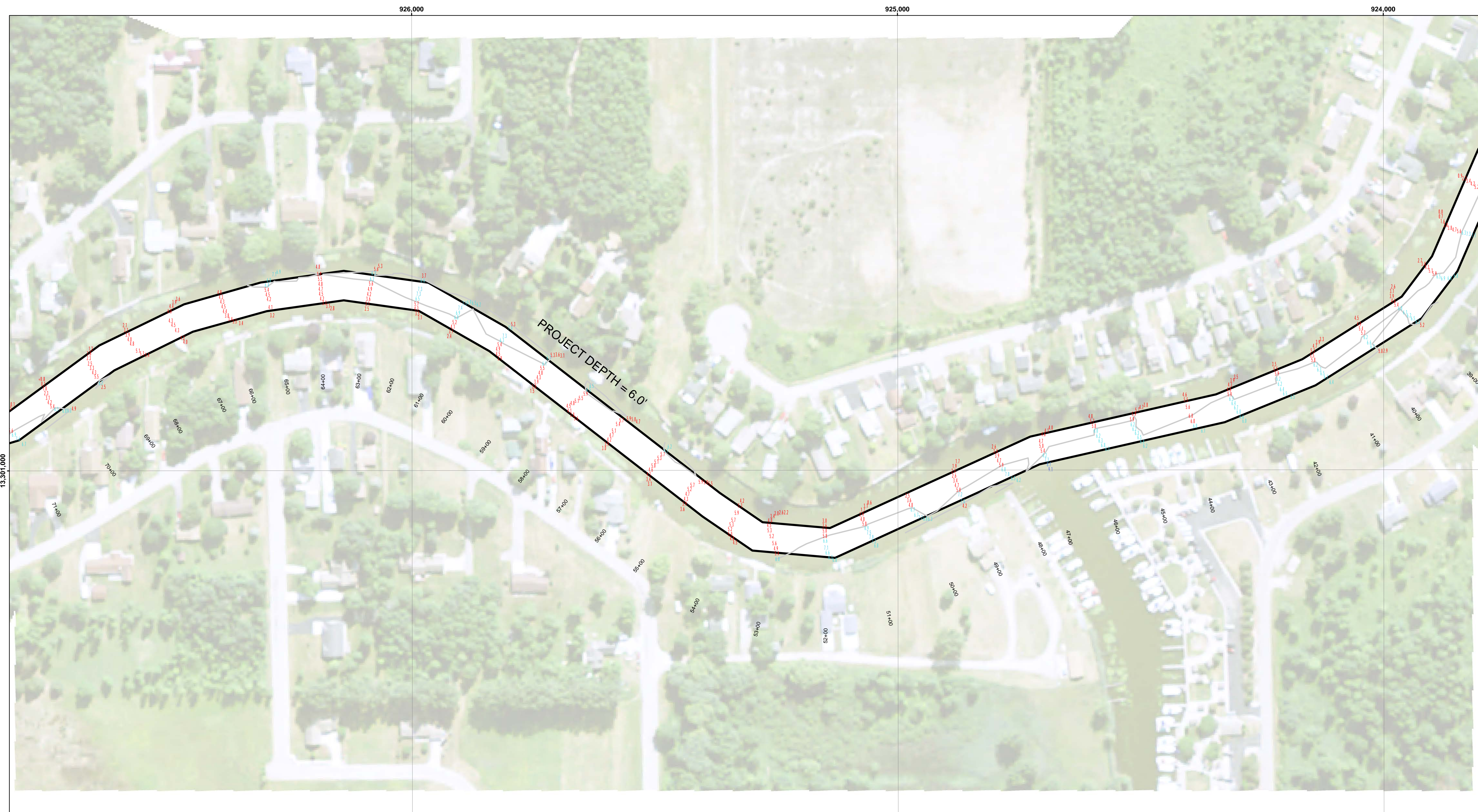
THE ABOVE SURVEY WAS CONDUCTED USING THE U.S.A.C.E. SURVEY VESSEL BOULTON EMPLOYING THE FOLLOWING COMPONENTS:

POSITIONING: APPLANIX POS-MV W/VRS-RTK
 MOTION COMPENSATION: POS-MV MRU
 SONAR: QOON CIV-300
 SOFTWARE: HYPACK 2017

TIDE CORRECTION VALUES REFERENCED FROM A PAINT MARK ON THE SEAWALL DESCRIBED AS 'TBM STEEL CORNER' LOCATED ON TOP OF A STEEL WALL AND AT THE DOWNSTREAM END OF SAID WALL. IGLD 85 ELEVATION = 582.18'.

IMAGERY SOURCED FROM: 2014 MICHIGAN NAIP IMAGERY

Sheet Reference Number
4 of 6

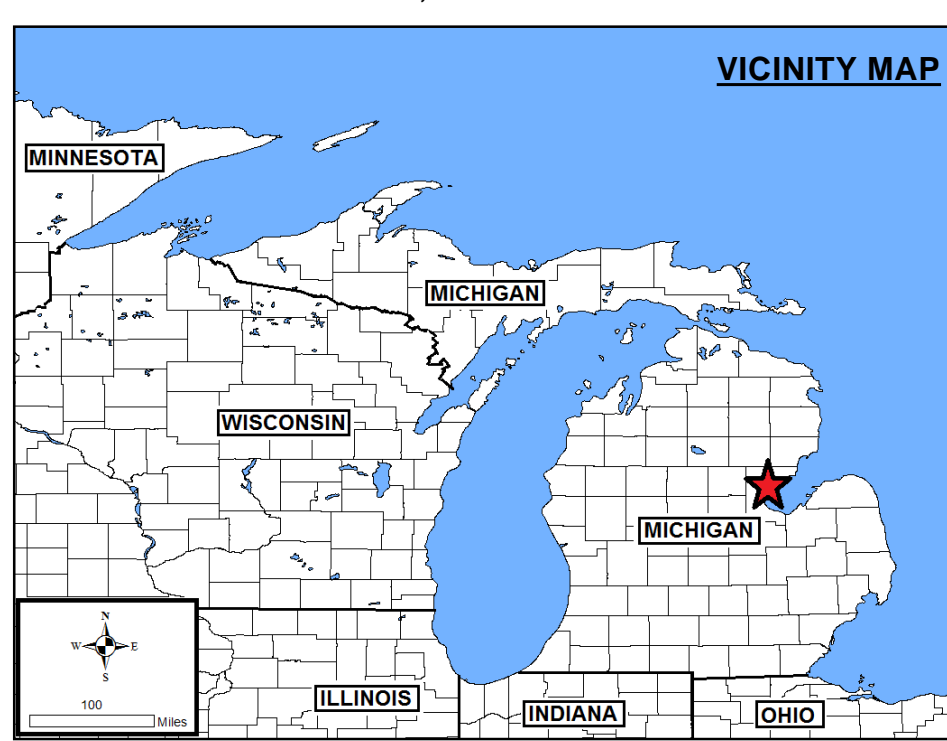
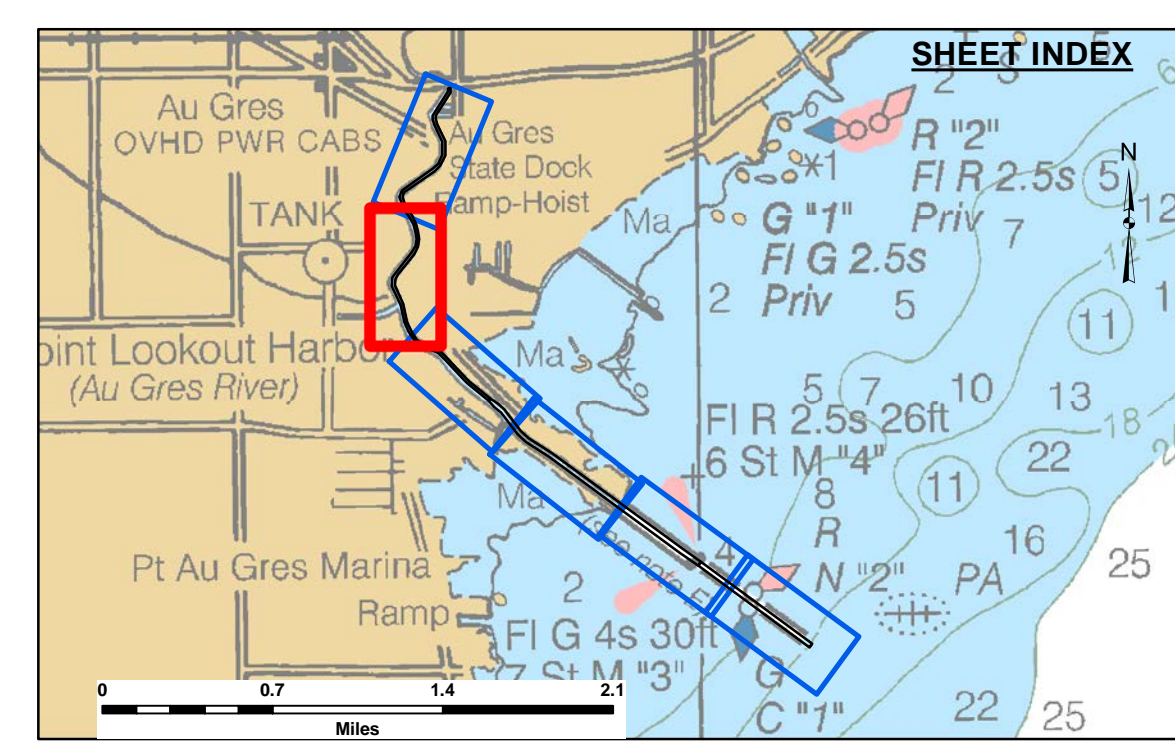


Disclaimer: The data represents the results of data collection/processing for a specific US Army Corps of Engineers activity and indicates the general existing conditions. The user is responsible for the results accuracy specifications. The user is responsible for the results of any of the application of the data for other than its intended purpose.

Access Constraints: The United States Government furnishes these data and the recipient accepts and uses them with the express understanding that the data are not to be used for any purpose other than that for which they were provided. The recipient may not transfer these data to others without also transferring the Disclaimer.

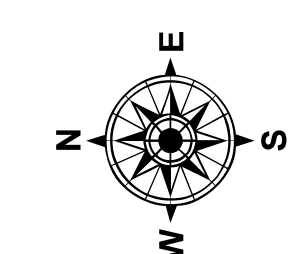
U.S. ARMY CORPS OF ENGINEERS DETROIT DISTRICT		
Submitted:	Surveyed By:	Checked By:
Recommended:	Plotted By:	
Approved:	Chief, Survey Station	Chief, Technical Services

Point Lookout Harbor, MI (AuGres)
Point Lookout Harbor
LK_01_OUT_20230606_CS
06 June 2023

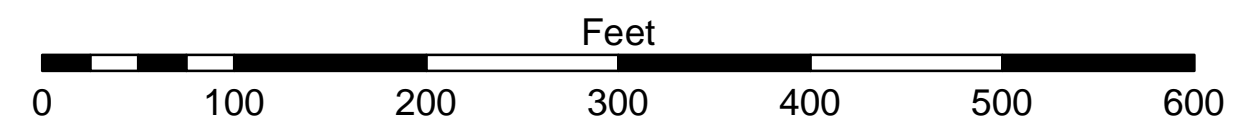


- LEGEND**
- Cable Submarine
 - - - Cable Overhead
 - Placement Area
 - ⊥ Beacon, General
 - Contour Lines
 - ▭ Channel Limits

- SOUNDING LEGEND**
- LESS THAN PROJECT DEPTH
 - PROJECT DEPTH
 - PROJECT DEPTH +1'
 - PROJECT DEPTH +2'
 - PROJECT DEPTH +3'
 - PROJECT DEPTH +4'
 - PROJECT DEPTH +5'



1 inch = 100 feet



NOTES: THE SOUNDINGS AND ASSOCIATED INFORMATION REPRESENTED HEREIN ARE THE RESULT OF SURVEYS MADE ON THE DATE AS INDICATED AND CAN ONLY BE CONSIDERED REPRESENTATIVE OF THE GENERAL CONDITIONS EXISTING AT THE TIME OF SURVEY.

THE SOUNDINGS DEPICTED HEREIN ARE EXPRESSED IN U.S. SURVEY FEET AND TENTHS THEREOF AND ARE REFERENCED TO THE FOLLOWING DATUMS:
 HORIZONTAL: MICHIGAN STATE PLANE COORDINATE SYSTEM, MICHIGAN SOUTH ZONE #2113, NORTH AMERICAN DATUM (NAD) OF 1983.
 VERTICAL: INTERNATIONAL GREAT LAKES DATUM (IGLD) OF 1985. LWD=577.5

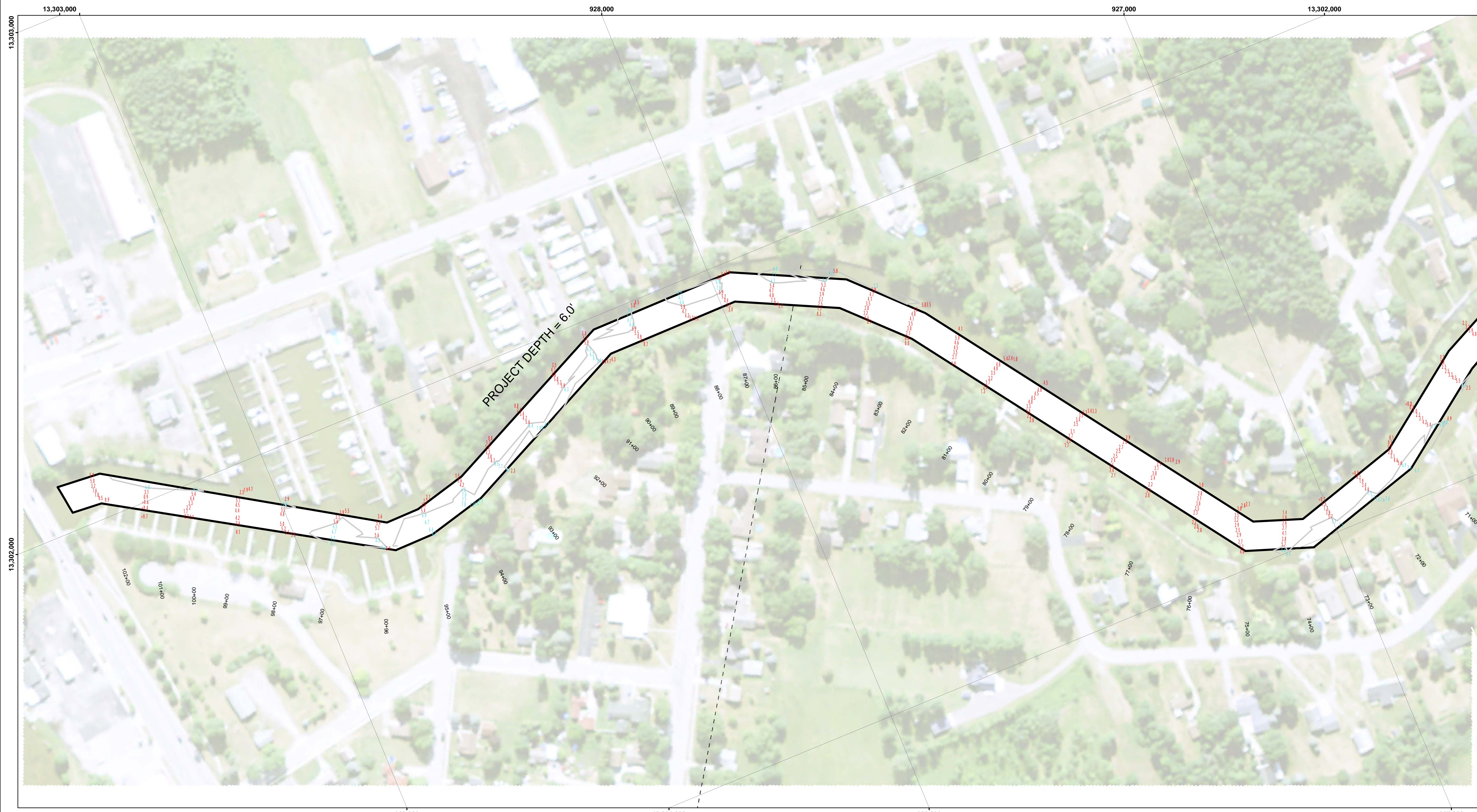
THE ABOVE SURVEY WAS CONDUCTED USING THE U.S.A.C.E. SURVEY VESSEL BOULTON EMPLOYING THE FOLLOWING COMPONENTS:

POSITIONING: APPLANIX POS-MV W/RS-RTK
 MOTION COMPENSATION: POS-MV MRU
 SONAR: QOBI CV-300
 SOFTWARE: HYPACK 2017

TIDE CORRECTION VALUES REFERENCED FROM A POINT MARK ON THE SEAWALL DESCRIBED AS 'TBM STEEL CORNER.' LOCATED ON TOP OF A STEEL WALL AND AT THE DOWNSTREAM END OF SAID WALL. IGLD 85 ELEVATION = 582.18'.

IMAGERY SOURCED FROM: 2014 MICHIGAN NAIP IMAGERY

Sheet Reference Number
5 of 6

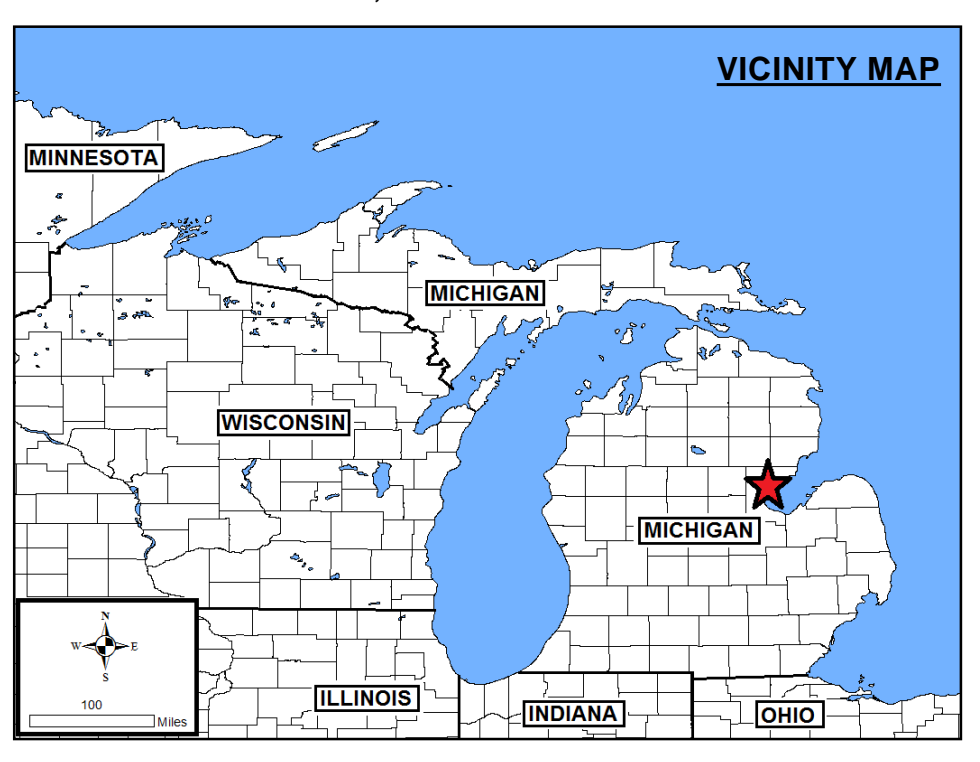
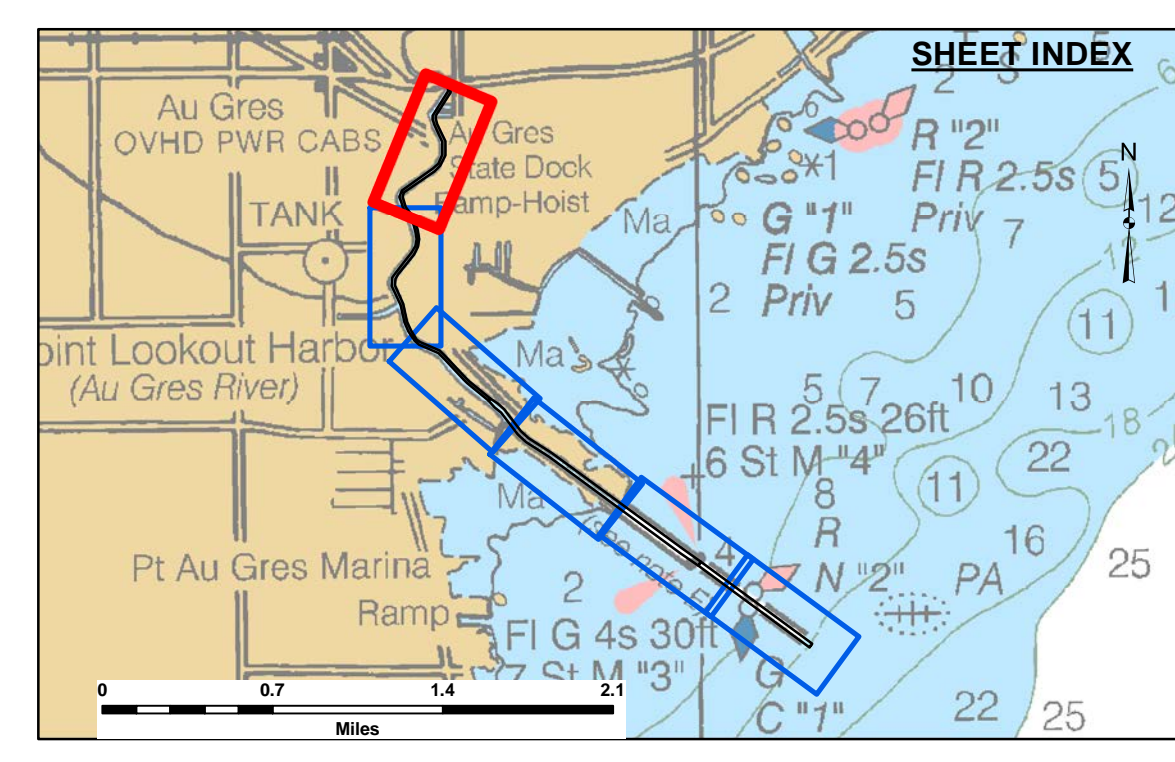


Disclaimer: The data represents the results of data collection and processing for a specific US Army Corps of Engineers activity and is not intended for use for any other purpose. The user is responsible for the results of any of the application of the data for other than its intended purpose.

Access Constraints: The United States Government furnishes these data and the recipient accepts and uses them with the express understanding that the data are not to be used for any purpose other than that for which they were provided. The recipient may not transfer these data to others without also transferring the Disclaimer.

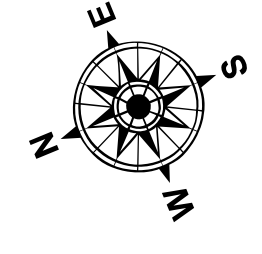
U.S. ARMY CORPS OF ENGINEERS DETROIT DISTRICT		
Submitted:	Surveyed By:	Checked By:
Recommended:	Plotted By:	
Approved:	Chief, Survey Station	Chief, Technical Services

Point Lookout Harbor, MI (AuGres)
Point Lookout Harbor
LK_01_OUT_20230606_CS
06 June 2023

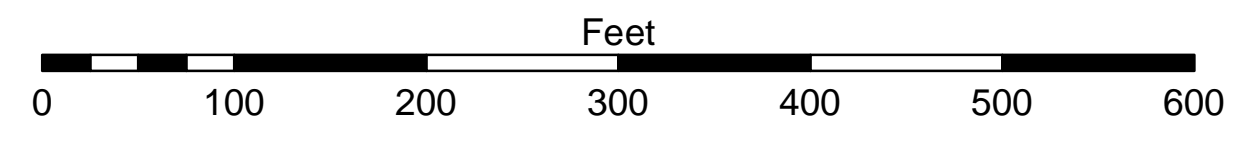


- LEGEND**
- Cable Submarine
 - - - Cable Overhead
 - ▭ Placement Area
 - ⊥ Beacon, General
 - Contour Lines
 - ▭ Channel Limits

- SOUNDING LEGEND**
- LESS THAN PROJECT DEPTH
 - PROJECT DEPTH
 - PROJECT DEPTH +1'
 - PROJECT DEPTH +2'
 - PROJECT DEPTH +3'
 - PROJECT DEPTH +4'
 - PROJECT DEPTH +5'



1 inch = 100 feet



NOTES: THE SOUNDINGS AND ASSOCIATED INFORMATION REPRESENTED HEREIN ARE THE RESULT OF SURVEYS MADE ON THE DATE AS INDICATED AND CAN ONLY BE CONSIDERED REPRESENTATIVE OF THE GENERAL CONDITIONS EXISTING AT THE TIME OF SURVEY.

THE SOUNDINGS DEPICTED HEREIN ARE EXPRESSED IN U.S. SURVEY FEET AND TENTHS THEREOF AND ARE REFERENCED TO THE FOLLOWING DATUMS:
 HORIZONTAL: MICHIGAN STATE PLANE COORDINATE SYSTEM, MICHIGAN SOUTH ZONE #2113, NORTH AMERICAN DATUM (NAD) OF 1983.
 VERTICAL: INTERNATIONAL GREAT LAKES DATUM (IGLD) OF 1985. LWD=577.5

THE ABOVE SURVEY WAS CONDUCTED USING THE U.S.A.C.E. SURVEY VESSEL BOLTUN EMPLOYING THE FOLLOWING COMPONENTS:
 POSITIONING: APPLANIX POS-MV W/RS-RTK
 MOTION COMPENSATION: POS-MV MRU
 SONAR: QOON CIV-300
 SOFTWARE: HYPACK 2017

TIDE CORRECTION VALUES REFERENCED FROM A PAINT MARK ON THE SEAWALL DESCRIBED AS 'TBM STEEL CORNER,' LOCATED ON TOP OF A STEEL WALL AND AT THE DOWNSTREAM END OF SAID WALL. IGLD 85 ELEVATION = 582.18'.

IMAGERY SOURCED FROM: 2014 MICHIGAN NAIP IMAGERY

Sheet Reference Number
6 of 6