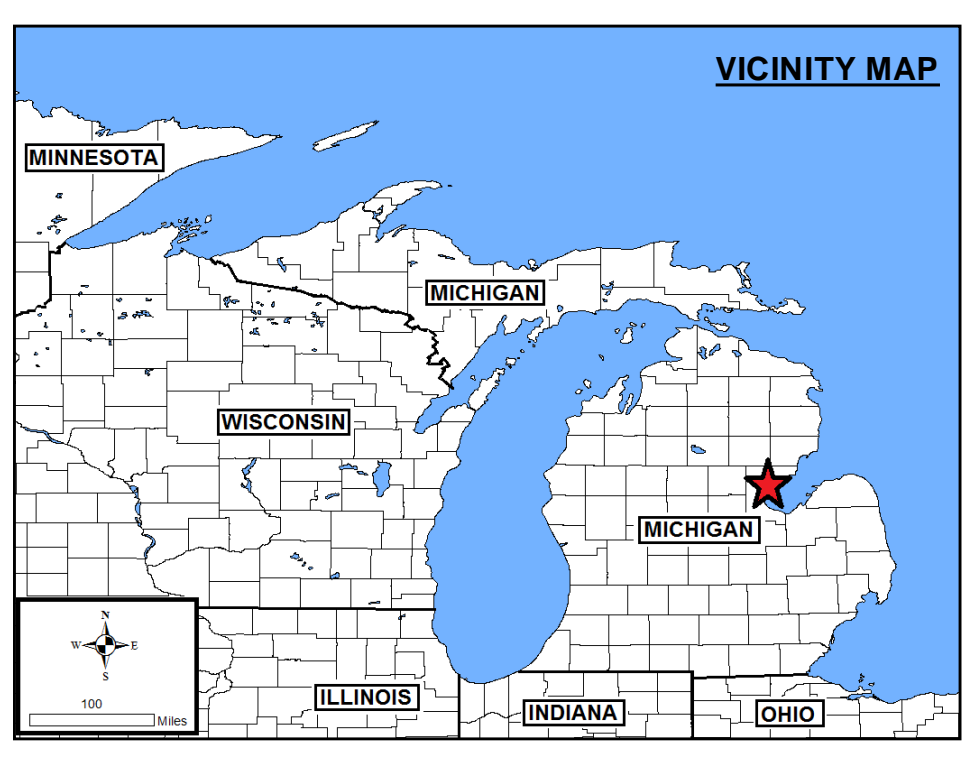
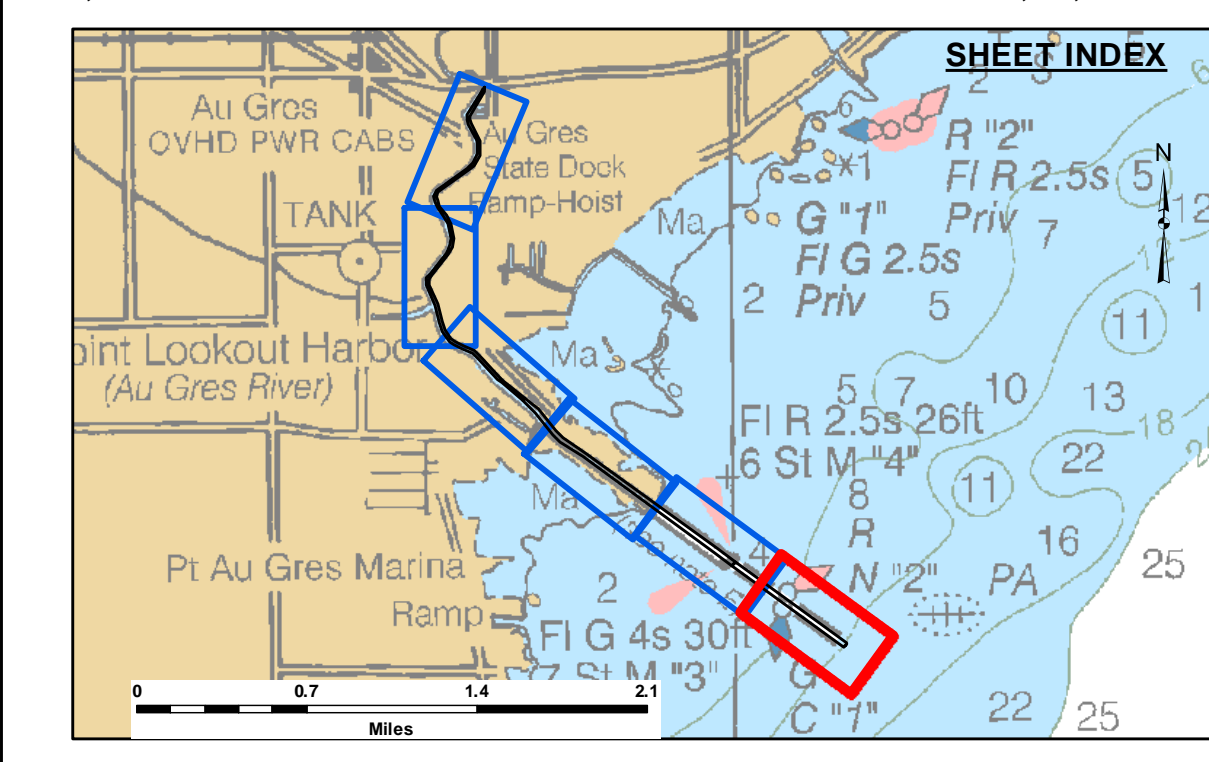
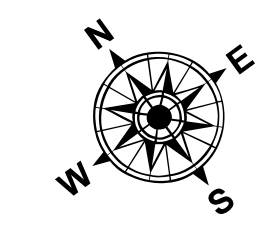


PROJECT DEPTH = 12.0'

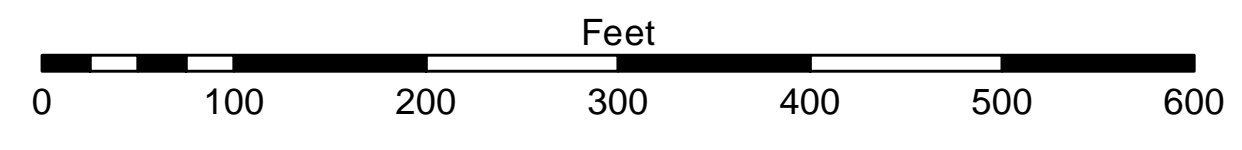


- LEGEND**
- Cable Submarine
 - - - Cable Overhead
 - Placement Area
 - ⊥ Beacon, General
 - Contour Lines
 - ▭ Channel Limits

- SOUNDING LEGEND**
- LESS THAN PROJECT DEPTH
 - PROJECT DEPTH
 - PROJECT DEPTH +1'
 - PROJECT DEPTH +2'
 - PROJECT DEPTH +3'
 - PROJECT DEPTH +4'
 - PROJECT DEPTH +5'



1 inch = 100 feet



NOTES: THE SOUNDINGS AND ASSOCIATED INFORMATION REPRESENTED HEREIN ARE THE RESULT OF SURVEYS MADE ON THE DATE AS INDICATED AND CAN ONLY BE CONSIDERED REPRESENTATIVE OF THE GENERAL CONDITIONS EXISTING AT THE TIME OF SURVEY.

THE SOUNDINGS DEPICTED HEREIN ARE EXPRESSED IN U.S. SURVEY FEET AND TENTHS THEREOF AND ARE REFERENCED TO THE FOLLOWING DATUMS:
 HORIZONTAL: MICHIGAN STATE PLANE COORDINATE SYSTEM, MICHIGAN SOUTH ZONE #2113, NORTH AMERICAN DATUM (NAD) OF 1983.
 VERTICAL: INTERNATIONAL GREAT LAKES DATUM (IGLD) OF 1985. LWD=577.5

THE ABOVE SURVEY WAS CONDUCTED USING THE U.S.A.C.E. SURVEY VESSEL LAUNCH EMPLOYING THE FOLLOWING COMPONENTS:

POSITIONING: APPLANIX POS-MV W/VRS-RTK
 MOTION COMPENSATION: POS-MV MRU
 SONAR: ODOM CIV-300
 SOFTWARE: HYPACK 2017

TIDE CORRECTION VALUES REFERENCED FROM A POINT MARK ON THE SEAWALL DESCRIBED AS 'TBM STEEL CORNER', LOCATED ON TOP OF A STEEL WALL AND AT THE DOWNSTREAM END OF SAID WALL. IGLD 85 ELEVATION = 582.18'.

IMAGERY SOURCED FROM: 2014 MICHIGAN NAIP IMAGERY



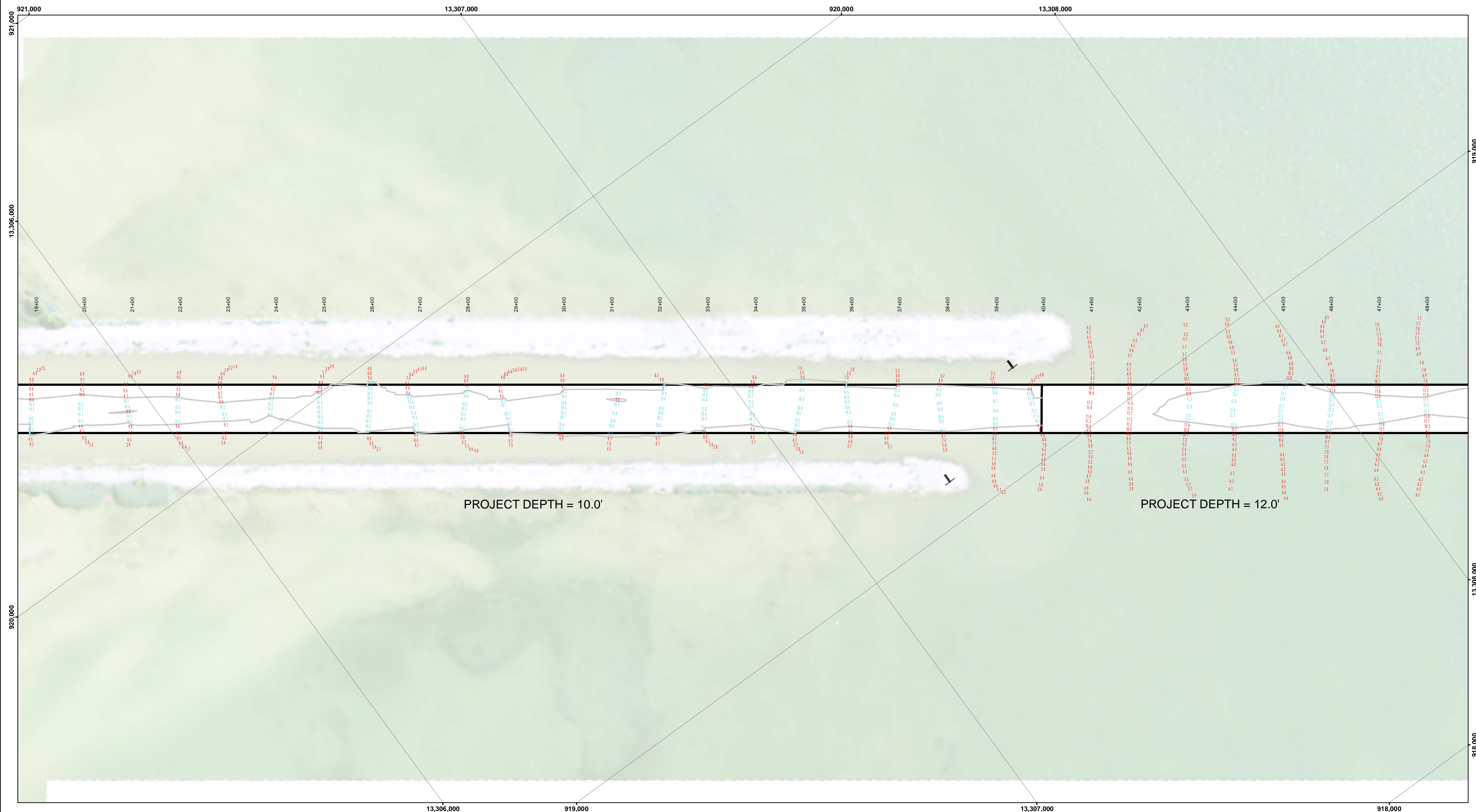
DISCLAIMER: The data represents the results of data collection/processing for a specific US Army Corps of Engineers activity and indicates the general existing conditions. Engineers assume and warrant the accuracy, completeness, reliability, usability, or suitability for any particular purpose of the data. The user is responsible for the accuracy, completeness, reliability, usability, or suitability of the data for other than its intended purpose. These data being to the Government. Therefore the Government provides this data for other than its intended purpose. The recipient may not transfer these data to others without also transferring this disclaimer.

U.S. ARMY CORPS OF ENGINEERS
DETROIT DISTRICT

Submitted By:	Surveyed By:
Recommended By: Chief, Survey Section	Plotted By:
Approved:	Checked By: Chief, Technical Services

Point Lookout Harbor, MI (AuGres)
Point Lookout Harbor
LK_01_OUT_20211014_CS
14 October 2021

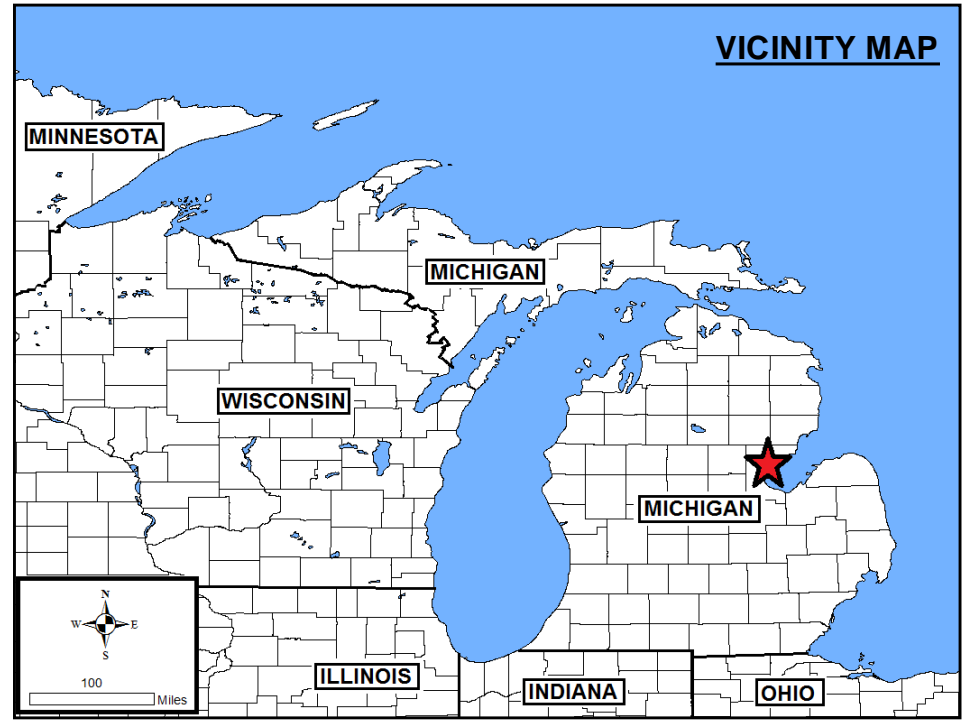
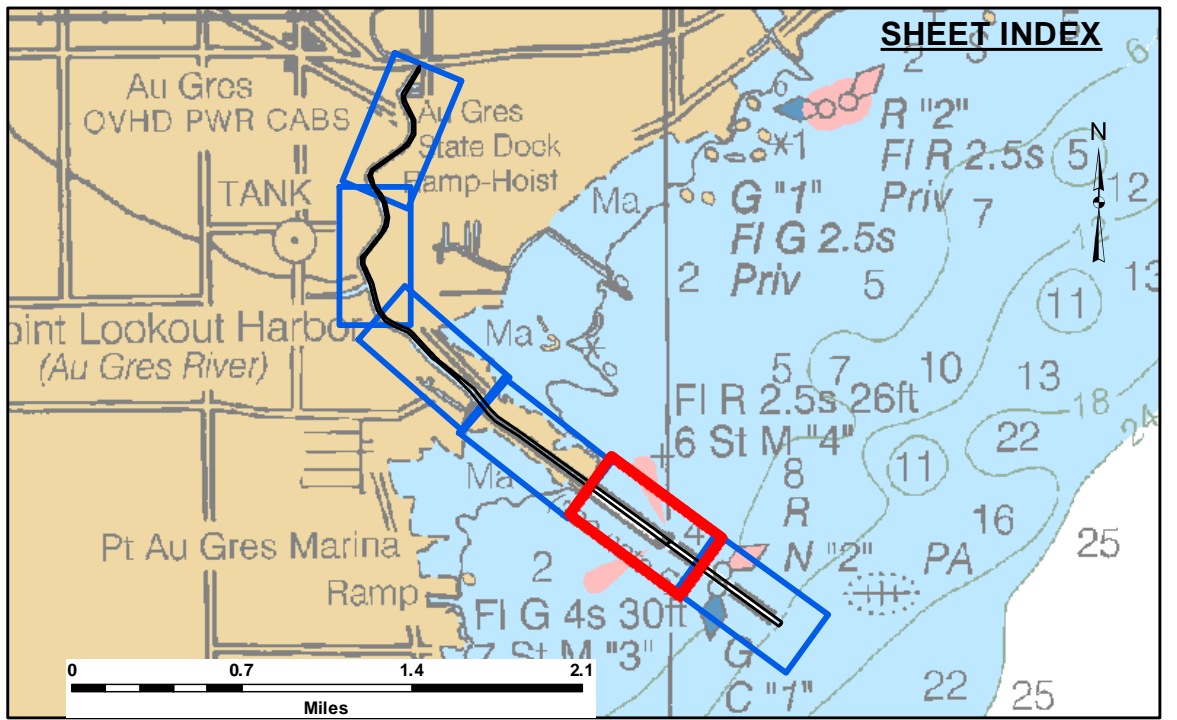
Sheet Reference Number
1 of 6



Disclaimer: The data represents the results of data collection and processing for a specific US Army Corps of Engineers activity and indicates the general existing conditions. Engineers assume no liability for the accuracy, completeness, reliability, usability, or suitability for any particular purpose of the data. The user is responsible for the accuracy, completeness, reliability, usability, or suitability of the data for other than its intended purpose. These data are provided as a service to the user and are not to be used for any purpose other than that for which they were intended. The recipient may not transfer these data to others without also transferring this disclaimer.

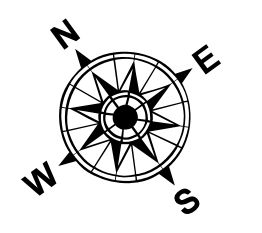
U.S. ARMY CORPS OF ENGINEERS DETROIT DISTRICT		
Submitted By:	Surveyed By:	Checked By:
Recommended By:	Plotted By:	
Approved:	Chief, Survey Section	Chief, Technical Services

Point Lookout Harbor, MI (AuGres)
Point Lookout Harbor
LK_01_OUT_20211014_CS
14 October 2021

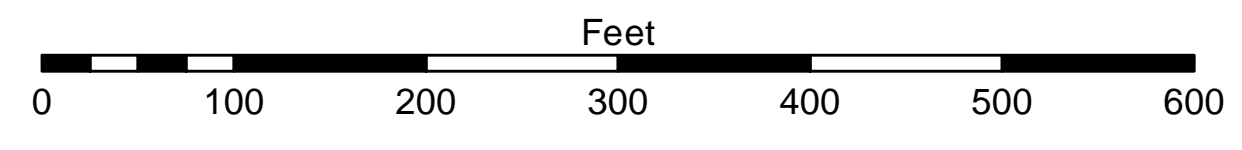


- LEGEND**
- Cable Submarine
 - - - Cable Overhead
 - Placement Area
 - ⊥ Beacon, General
 - Contour Lines
 - ▭ Channel Limits

- SOUNDING LEGEND**
- LESS THAN PROJECT DEPTH
 - PROJECT DEPTH
 - PROJECT DEPTH +1'
 - PROJECT DEPTH +2'
 - PROJECT DEPTH +3'
 - PROJECT DEPTH +4'
 - PROJECT DEPTH +5'



1 inch = 100 feet



NOTES: THE SOUNDINGS AND ASSOCIATED INFORMATION REPRESENTED HEREIN ARE THE RESULT OF SURVEYS MADE ON THE DATE AS INDICATED AND CAN ONLY BE CONSIDERED REPRESENTATIVE OF THE GENERAL CONDITIONS EXISTING AT THE TIME OF SURVEY.

THE SOUNDINGS DEPICTED HEREIN ARE EXPRESSED IN U.S. SURVEY FEET AND TENTHS THEREOF AND ARE REFERENCED TO THE FOLLOWING DATUMS:
 HORIZONTAL: MICHIGAN STATE PLANE COORDINATE SYSTEM, MICHIGAN SOUTH ZONE #2113, NORTH AMERICAN DATUM (NAD) OF 1983.
 VERTICAL: INTERNATIONAL GREAT LAKES DATUM (IGLD) OF 1985. LWD=577.5

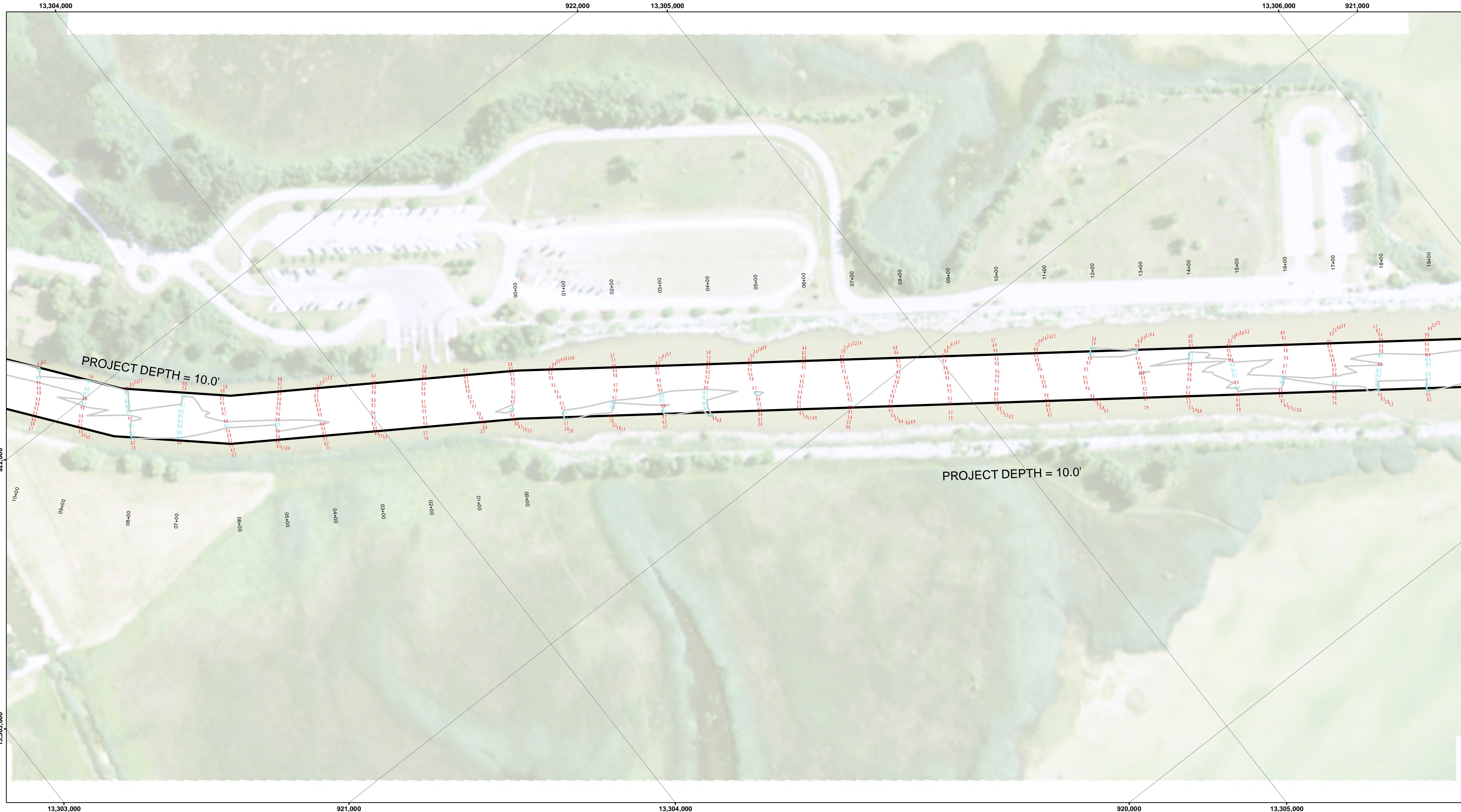
THE ABOVE SURVEY WAS CONDUCTED USING THE U.S.A.C.E. SURVEY VESSEL LAUNCH EMPLOYING THE FOLLOWING COMPONENTS:

POSITIONING: APPLANIX POS-MV W/VRS-RTK
 MOTION COMPENSATION: POS-MV MRU
 SONAR: ODOM CIV-300
 SOFTWARE: HYPACK 2017

TIDE CORRECTION VALUES REFERENCED FROM A PAINTE MARK ON THE SEAWALL DESCRIBED AS 'TBM STEEL CORNER' LOCATED ON TOP OF A STEEL WALL AND AT THE DOWNSTREAM END OF SAID WALL. IGLD 85 ELEVATION = 582.18'.

IMAGERY SOURCED FROM: 2014 MICHIGAN NAIP IMAGERY

Sheet Reference Number
2 of 6

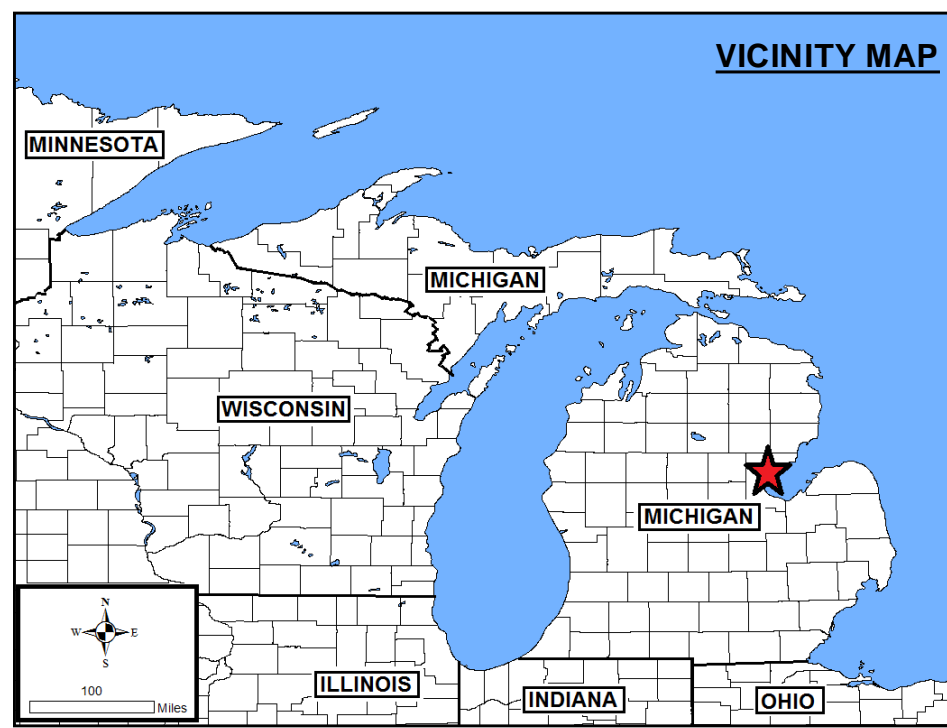
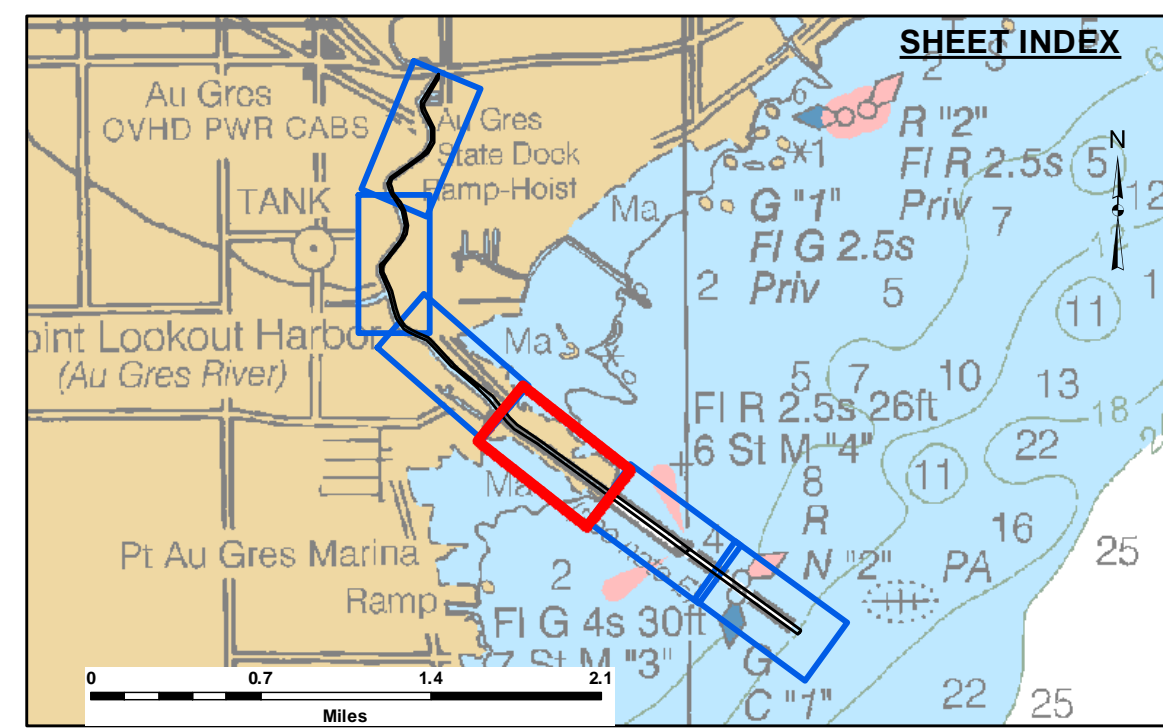


DISCLAIMER: The United States Government furnishes these data and the recipient accepts and uses them with the express understanding that the United States Government makes no warranty, expressed, or implied concerning the accuracy, completeness, reliability, usability, or suitability for any particular purpose of the data. The United States Government is not responsible for the results of any of the application of the data for other than its intended purpose. These data are being provided to the recipient for their own use and are not to be used for any other purpose without the express written consent of the United States Government. The recipient may not transfer these data to others without also transferring this disclaimer.

U.S. ARMY CORPS OF ENGINEERS DETROIT DISTRICT		
Submitted:	Surveyed By:	
Recommended:	Plotted By:	
Approved:	Chief, Technical Services	

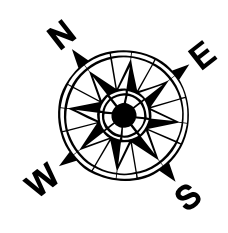
Point Lookout Harbor, MI (AuGres)
Point Lookout Harbor
LK_01_OUT_20211014_CS
14 October 2021

Sheet Reference Number
3 of 6

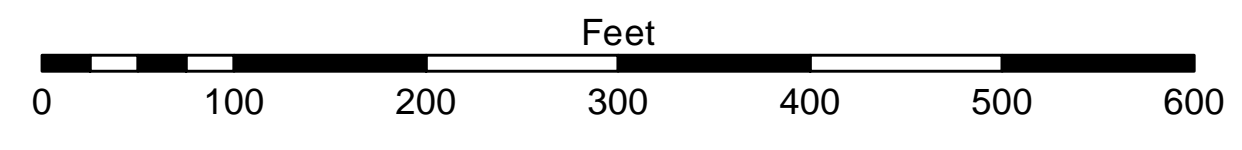


- LEGEND**
- Cable Submarine
 - - - Cable Overhead
 - Placement Area
 - ⊥ Beacon, General
 - Contour Lines
 - ▭ Channel Limits

- SOUNDING LEGEND**
- LESS THAN PROJECT DEPTH
 - PROJECT DEPTH
 - PROJECT DEPTH +1'
 - PROJECT DEPTH +2'
 - PROJECT DEPTH +3'
 - PROJECT DEPTH +4'
 - PROJECT DEPTH +5'



1 inch = 100 feet



NOTES: THE SOUNDINGS AND ASSOCIATED INFORMATION REPRESENTED HEREIN ARE THE RESULT OF SURVEYS MADE ON THE DATE AS INDICATED AND CAN ONLY BE CONSIDERED REPRESENTATIVE OF THE GENERAL CONDITIONS EXISTING AT THE TIME OF SURVEY.

THE SOUNDINGS DEPICTED HEREIN ARE EXPRESSED IN U.S. SURVEY FEET AND TENTHS THEREOF AND ARE REFERENCED TO THE FOLLOWING DATUMS:
 HORIZONTAL: MICHIGAN STATE PLANE COORDINATE SYSTEM, MICHIGAN SOUTH ZONE #2113, NORTH AMERICAN DATUM (NAD) OF 1983.
 VERTICAL: INTERNATIONAL GREAT LAKES DATUM (IGLD) OF 1985, LWD=577.5

THE ABOVE SURVEY WAS CONDUCTED USING THE U.S.A.C.E. SURVEY VESSEL LAUNCH EMPLOYING THE FOLLOWING COMPONENTS:

POSITIONING: APPLANIX POS-MV W/VRS-RTK
 MOTION COMPENSATION: POS-MV MRU
 SONAR: ODOM CIV-300
 SOFTWARE: HYPACK 2017

TIDE CORRECTION VALUES REFERENCED FROM A PAINTE MARK ON THE SEAWALL DESCRIBED AS 'B.M. STEEL CORNER', LOCATED ON TOP OF A STEEL WALL AND AT THE DOWNSTREAM END OF SAID WALL. IGLD 85 ELEVATION = 582.18'.

IMAGERY SOURCED FROM: 2014 MICHIGAN NAIP IMAGERY

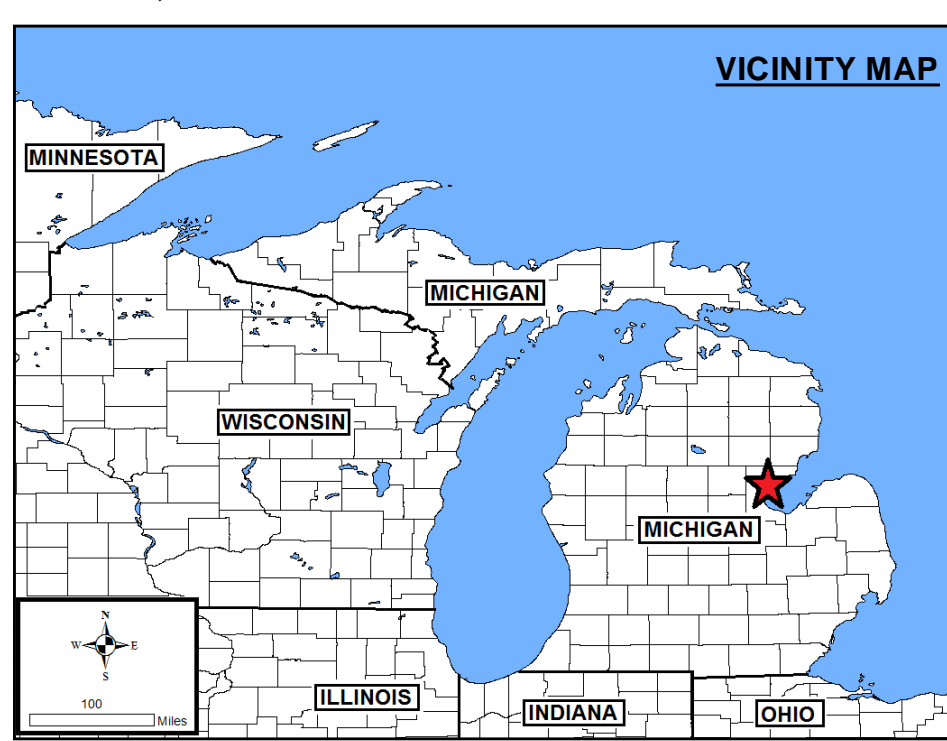
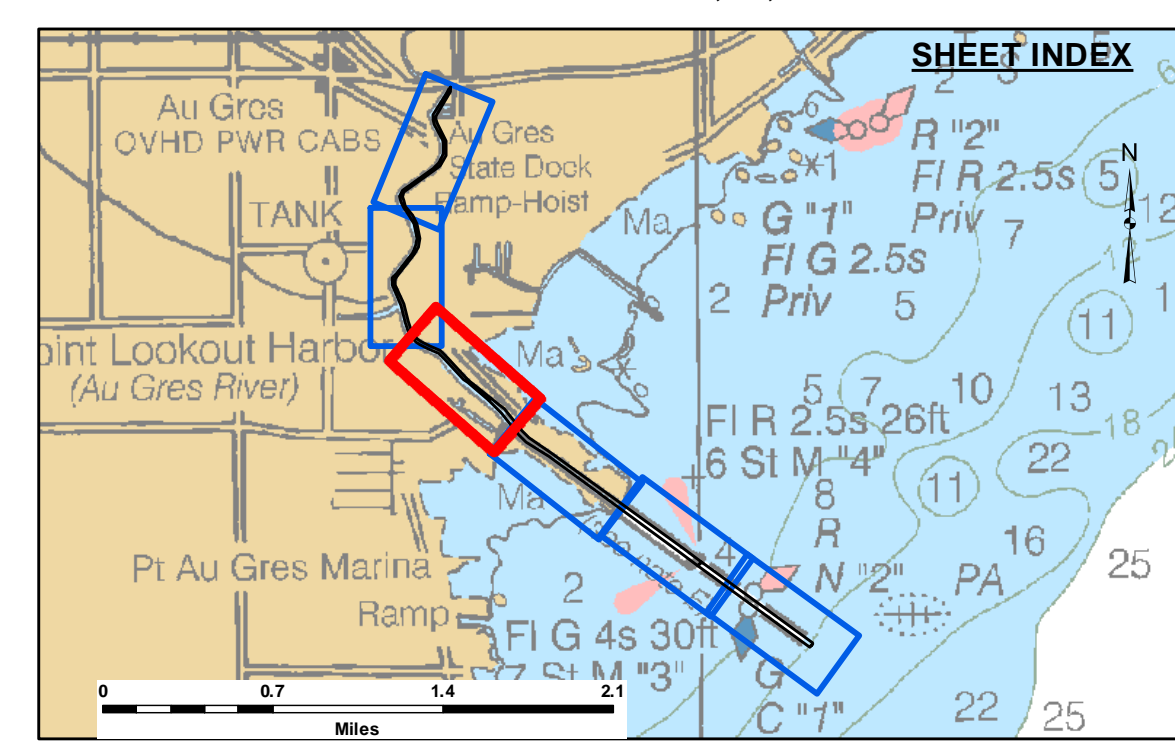


Disclaimer: The data represents the results of data collection and processing for a specific US Army Corps of Engineers activity and indicates the general existing conditions. The user is responsible for the accuracy, completeness, and reliability of the data for other than its intended purpose. The user is responsible for the accuracy, completeness, and reliability of the data for other than its intended purpose.

DISCLAIMER: The United States Government furnishes this data and the recipient accepts and uses them with the express understanding that the data is provided for informational purposes only and is not to be used for any purpose other than that for which it was intended. These data belong to the Government. Therefore, the recipient may not transfer, disseminate, or otherwise use these data for other than the intended purpose.

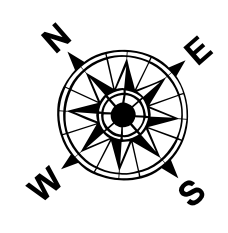
Submitted:	Surveyed By:
Recommended:	Plotted By:
Approved:	Checked By:

U.S. ARMY CORPS OF ENGINEERS
DETROIT DISTRICT

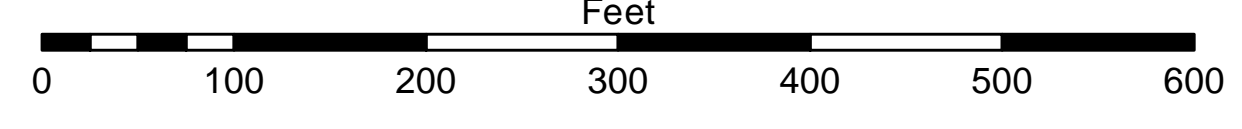


- LEGEND**
- Cable Submarine
 - - - Cable Overhead
 - Placement Area
 - ⊥ Beacon, General
 - Contour Lines
 - ▭ Channel Limits

- SOUNDING LEGEND**
- LESS THAN PROJECT DEPTH
 - PROJECT DEPTH
 - PROJECT DEPTH +1'
 - PROJECT DEPTH +2'
 - PROJECT DEPTH +3'
 - PROJECT DEPTH +4'
 - PROJECT DEPTH +5'



1 inch = 100 feet



NOTES: THE SOUNDINGS AND ASSOCIATED INFORMATION REPRESENTED HEREIN ARE THE RESULT OF SURVEYS MADE ON THE DATE AS INDICATED AND CAN ONLY BE CONSIDERED REPRESENTATIVE OF THE GENERAL CONDITIONS EXISTING AT THE TIME OF SURVEY.

THE SOUNDINGS DEPICTED HEREIN ARE EXPRESSED IN U.S. SURVEY FEET AND TENTHS THEREOF AND ARE REFERENCED TO THE FOLLOWING DATUMS:
HORIZONTAL: MICHIGAN STATE PLANE COORDINATE SYSTEM, MICHIGAN SOUTH ZONE #2113, NORTH AMERICAN DATUM (NAD) OF 1983.
VERTICAL: INTERNATIONAL GREAT LAKES DATUM (IGLD) OF 1985. LWD=577.5

THE ABOVE SURVEY WAS CONDUCTED USING THE U.S.A.C.E. SURVEY VESSEL LAUNCH EMPLOYING THE FOLLOWING COMPONENTS:

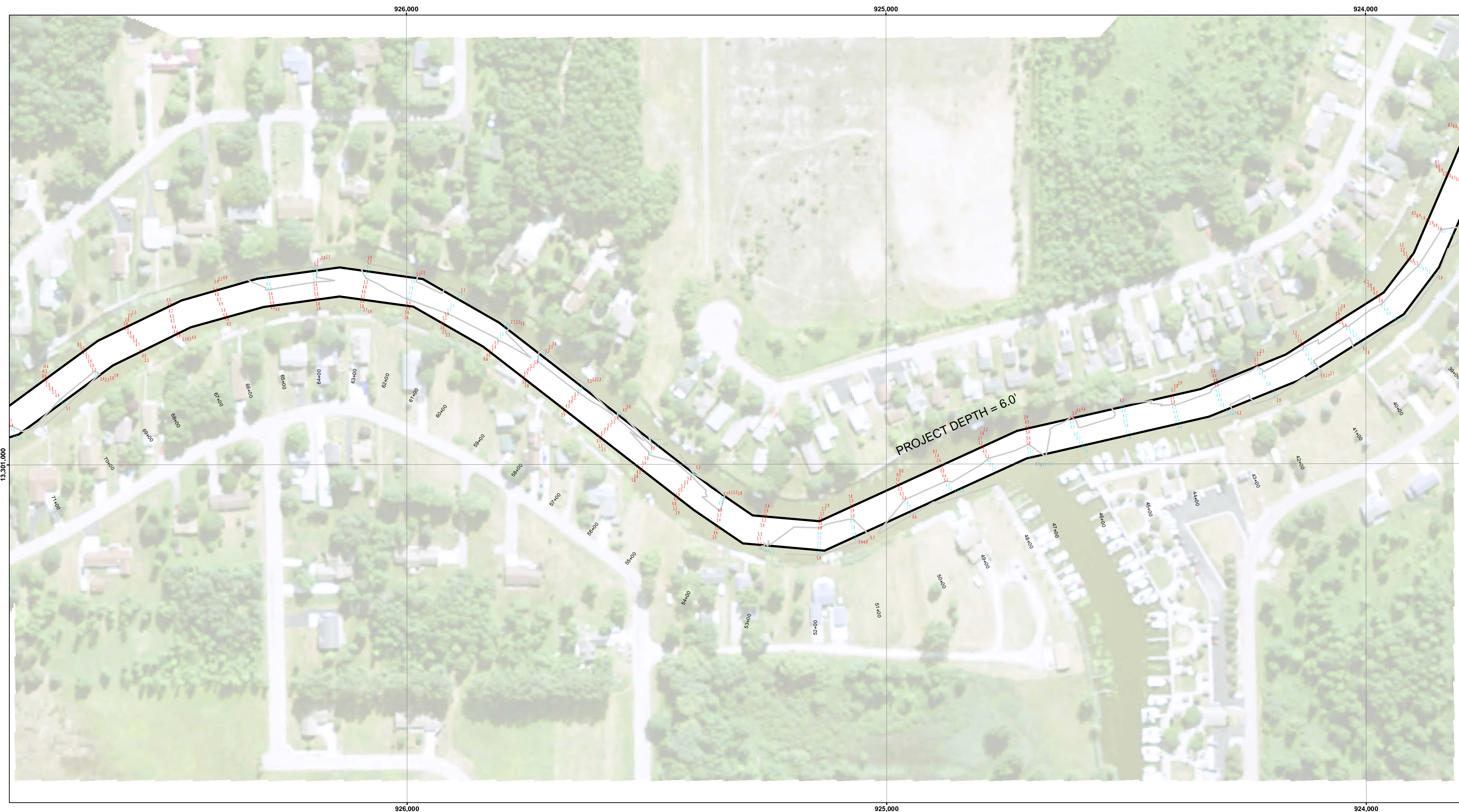
POSITIONING: APPLANIX POS-MV W/VRS-RTK
MOTION COMPENSATION: POS-MV MRU
SONAR: ODOM CIV-300
SOFTWARE: HYPACK 2017

TIDE CORRECTION VALUES REFERENCED FROM A POINT MARK ON THE SEAWALL DESCRIBED AS 'TBM STEEL CORNER' LOCATED ON TOP OF A STEEL WALL AND AT THE DOWNSTREAM END OF SAID WALL. IGLD 85 ELEVATION = 582.18'.

IMAGERY SOURCED FROM: 2014 MICHIGAN NAIP IMAGERY

Point Lookout Harbor, MI (AuGres)
Point Lookout Harbor
LK_01_OUT_20211014_CS
14 October 2021

Sheet Reference Number
4 of 6

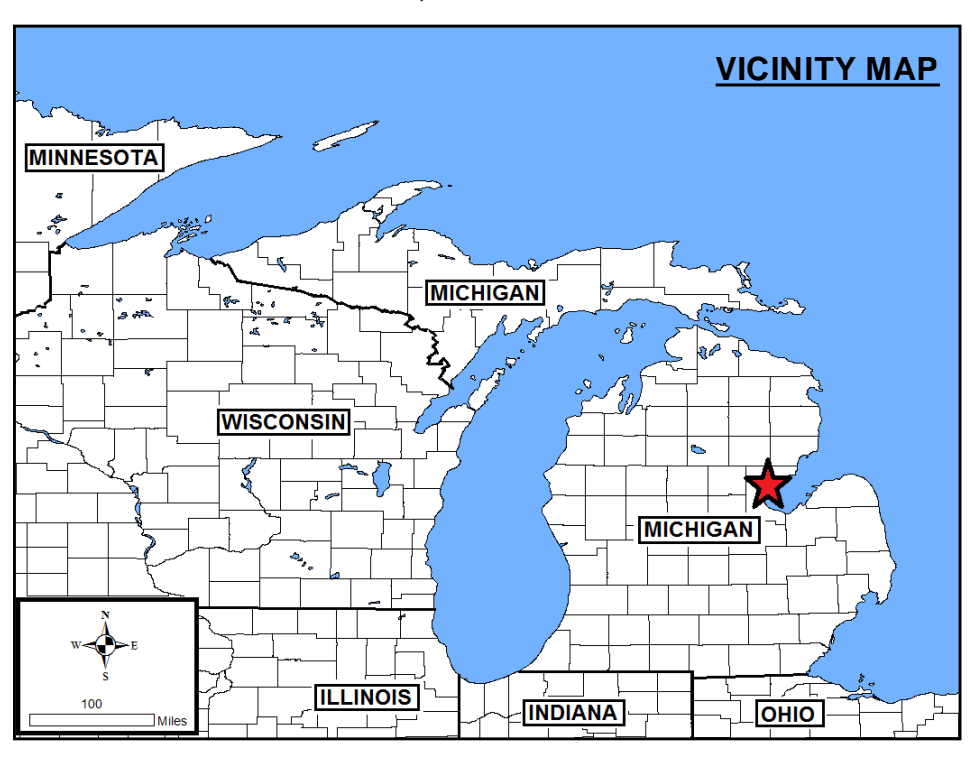
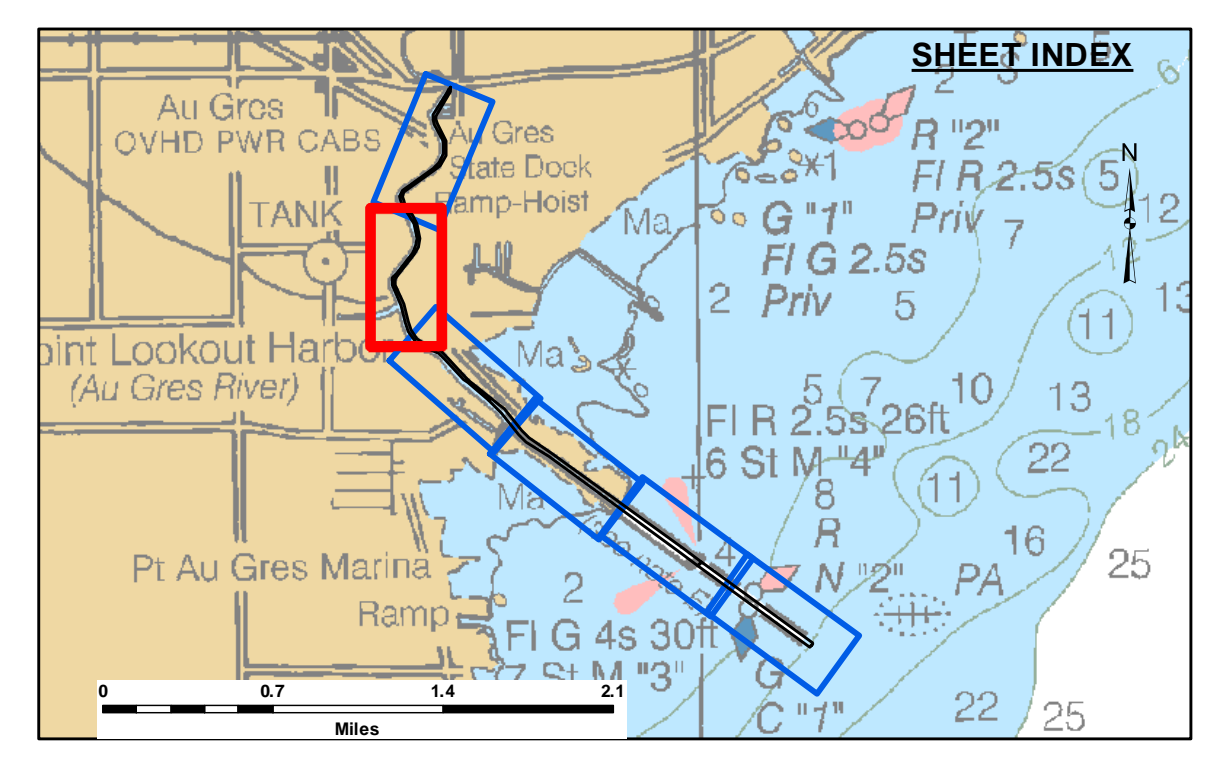


Disclaimer: The data represents the results of data collection and processing for a specific US Army Corps of Engineers activity and indicates the general existing conditions. The user is responsible for the accuracy, completeness, and reliability of the data for other than its intended purpose. The user is responsible for the accuracy, completeness, and reliability of the data for other than its intended purpose.

Access Constraints: The United States Government furnishes these data and the recipient accepts and uses them with the express understanding that they are not to be distributed, reproduced, or used for any purpose other than that for which they were provided. These data belong to the Government. Therefore the recipient may not transfer these data to others without also transferring this Disclaimer.

U.S. ARMY CORPS OF ENGINEERS DETROIT DISTRICT		
Submitted:	Surveyed By:	Checked By:
Recommended:	Plotted By:	
Approved:	Chief, Survey Section	Chief, Technical Services

Point Lookout Harbor, MI (AuGres)
Point Lookout Harbor
LK_01_OUT_20211014_CS
14 October 2021

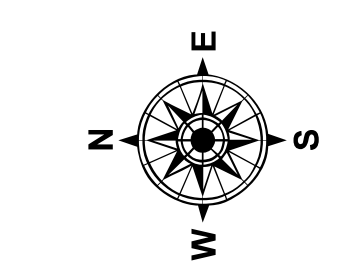


LEGEND

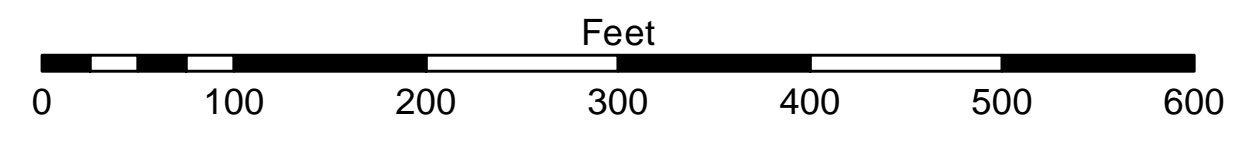
- Cable Submarine
- - - Cable Overhead
- Placement Area
- ⊥ Beacon, General
- Contour Lines
- ▭ Channel Limits

SOUNDING LEGEND

- LESS THAN PROJECT DEPTH
- PROJECT DEPTH
- PROJECT DEPTH +1'
- PROJECT DEPTH +2'
- PROJECT DEPTH +3'
- PROJECT DEPTH +4'
- PROJECT DEPTH +5'



1 inch = 100 feet



NOTES: THE SOUNDINGS AND ASSOCIATED INFORMATION REPRESENTED HEREIN ARE THE RESULT OF SURVEYS MADE ON THE DATE AS INDICATED AND CAN ONLY BE CONSIDERED REPRESENTATIVE OF THE GENERAL CONDITIONS EXISTING AT THE TIME OF SURVEY.

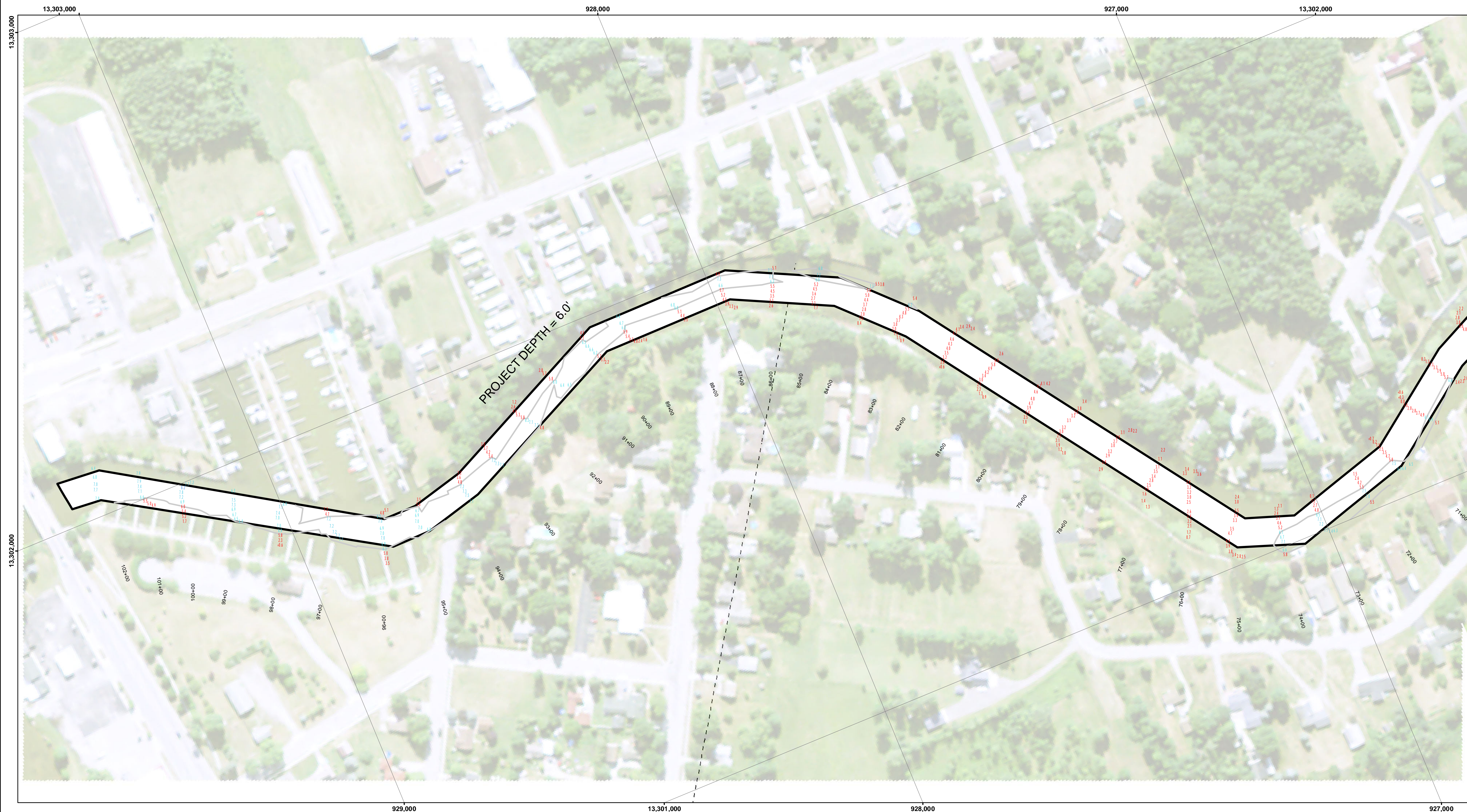
THE SOUNDINGS DEPICTED HEREIN ARE EXPRESSED IN U.S. SURVEY FEET AND TENTHS THEREOF AND ARE REFERENCED TO THE FOLLOWING DATUMS:
 HORIZONTAL: MICHIGAN STATE PLANE COORDINATE SYSTEM, MICHIGAN SOUTH ZONE #2113, NORTH AMERICAN DATUM (NAD) OF 1983.
 VERTICAL: INTERNATIONAL GREAT LAKES DATUM (IGLD) OF 1985, LWD=577.5

THE ABOVE SURVEY WAS CONDUCTED USING THE U.S.A.C.E. SURVEY VESSEL LAUNCH EMPLOYING THE FOLLOWING COMPONENTS:
 POSITIONING: APPLANIX POS-MV W/VR-RTK
 MOTION COMPENSATION: POS-MV MRU
 SONAR: ODOM CIV-300
 SOFTWARE: HYPACK 2017

TIDE CORRECTION VALUES REFERENCED FROM A PAINT MARK ON THE SEAWALL DESCRIBED AS 'TBM STEEL CORNER', LOCATED ON TOP OF A STEEL WALL AND AT THE DOWNSTREAM END OF SAID WALL. IGLD 85 ELEVATION = 582.18'.

IMAGERY SOURCED FROM: 2014 MICHIGAN NAIP IMAGERY

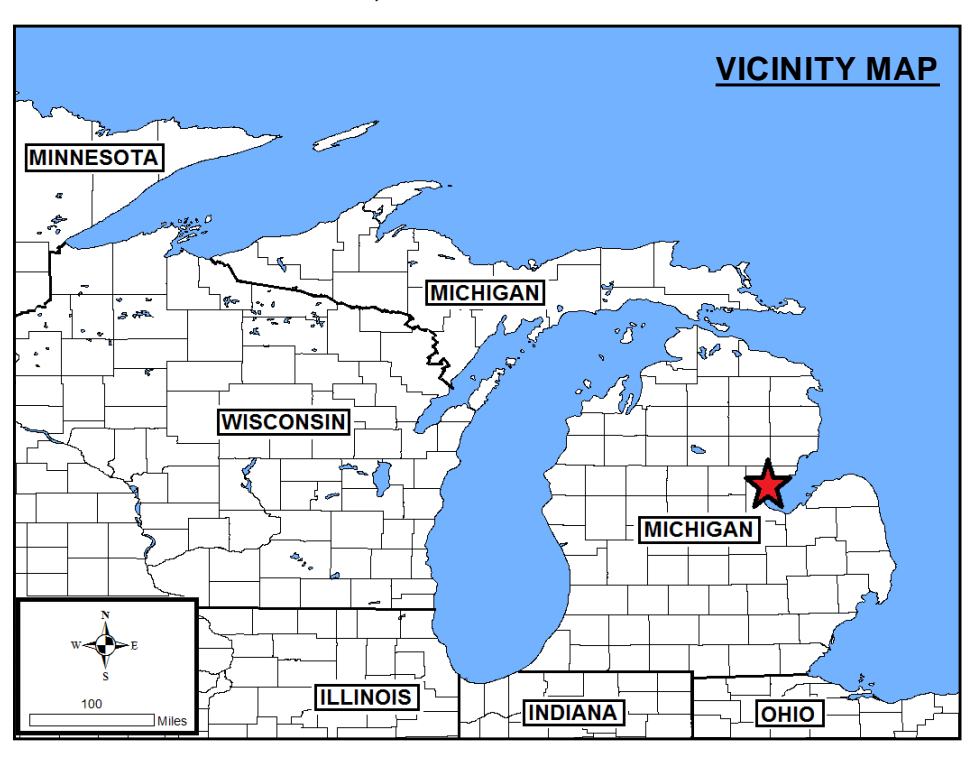
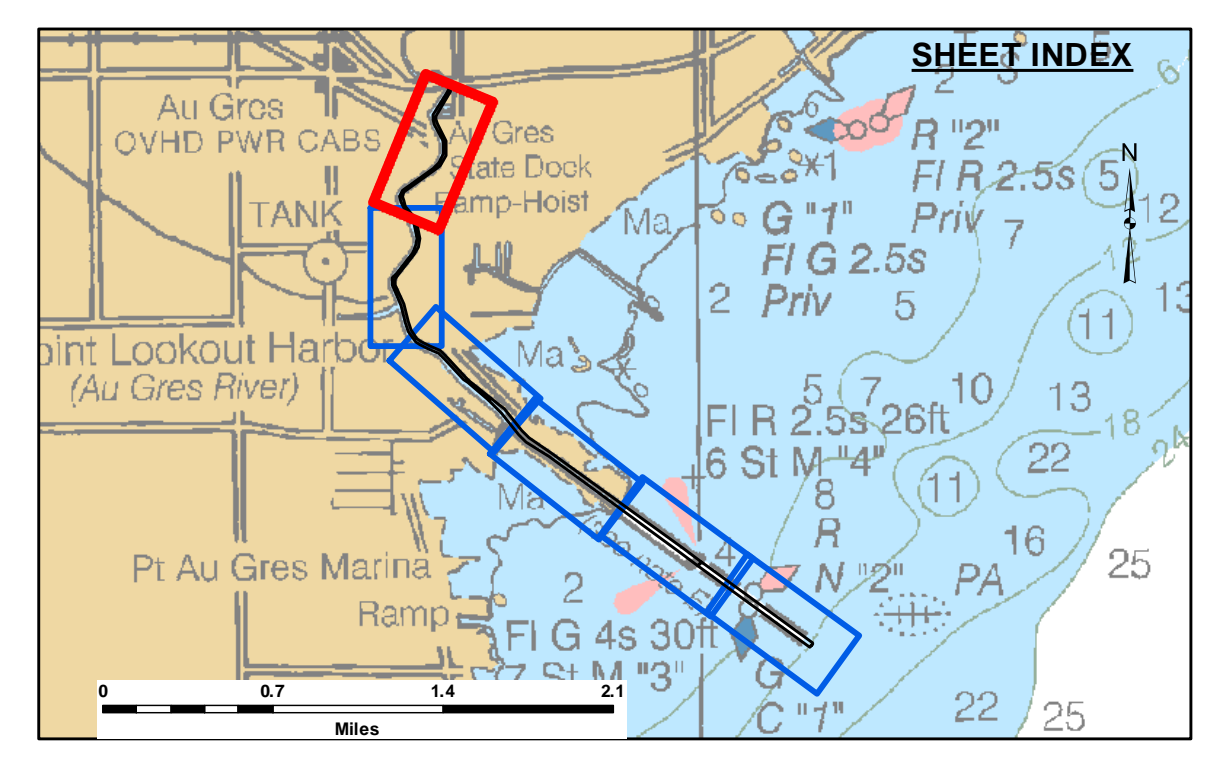
Sheet Reference Number
5 of 6



Disclaimer: The data represents the results of data collection and processing for a specific US Army Corps of Engineers activity and is not intended for general use. The user is responsible for the accuracy, reliability, and validity of the data for other than its intended purpose. The user is responsible for the accuracy, reliability, and validity of the data for other than its intended purpose. The user is responsible for the accuracy, reliability, and validity of the data for other than its intended purpose.

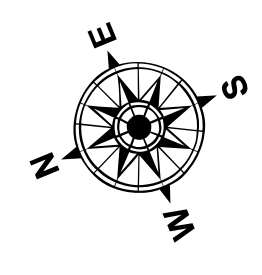
U.S. ARMY CORPS OF ENGINEERS DETROIT DISTRICT		
Submitted:	Surveyed By:	
Recommended:	Plotted By:	
Approved:	Chief, Survey Section	
	Chief, Technical Services	

Point Lookout Harbor, MI (AuGres)
Point Lookout Harbor
LK_01_OUT_20211014_CS
14 October 2021

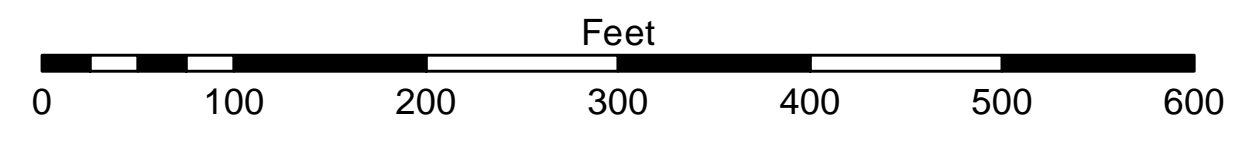


- LEGEND**
- Cable Submarine
 - - - Cable Overhead
 - Placement Area
 - ⊥ Beacon, General
 - Contour Lines
 - ▭ Channel Limits

- SOUNDING LEGEND**
- LESS THAN PROJECT DEPTH
 - PROJECT DEPTH
 - PROJECT DEPTH +1'
 - PROJECT DEPTH +2'
 - PROJECT DEPTH +3'
 - PROJECT DEPTH +4'
 - PROJECT DEPTH +5'



1 inch = 100 feet



NOTES: THE SOUNDINGS AND ASSOCIATED INFORMATION REPRESENTED HEREIN ARE THE RESULT OF SURVEYS MADE ON THE DATE AS INDICATED AND CAN ONLY BE CONSIDERED REPRESENTATIVE OF THE GENERAL CONDITIONS EXISTING AT THE TIME OF SURVEY.

THE SOUNDINGS DEPICTED HEREIN ARE EXPRESSED IN U.S. SURVEY FEET AND TENTHS THEREOF AND ARE REFERENCED TO THE FOLLOWING DATUMS:
 HORIZONTAL: MICHIGAN STATE PLANE COORDINATE SYSTEM, MICHIGAN SOUTH ZONE #2113, NORTH AMERICAN DATUM (NAD) OF 1983.
 VERTICAL: INTERNATIONAL GREAT LAKES DATUM (IGLD) OF 1985. LWD=577.5

THE ABOVE SURVEY WAS CONDUCTED USING THE U.S.A.C.E. SURVEY VESSEL LAUNCH EMPLOYING THE FOLLOWING COMPONENTS:
 POSITIONING: APPLANIX POS-MV W/VR-RTK
 MOTION COMPENSATION: POS-MV MRU
 SONAR: ODOM CIV-300
 SOFTWARE: HYPACK 2017

TIDE CORRECTION VALUES REFERENCED FROM A POINT MARK ON THE SEAWALL DESCRIBED AS 'TBM STEEL CORNER' LOCATED ON TOP OF A STEEL WALL AND AT THE DOWNSTREAM END OF SAID WALL. IGLD 85 ELEVATION = 582.18'.

IMAGERY SOURCED FROM: 2014 MICHIGAN NAIP IMAGERY

Sheet Reference Number
6 of 6