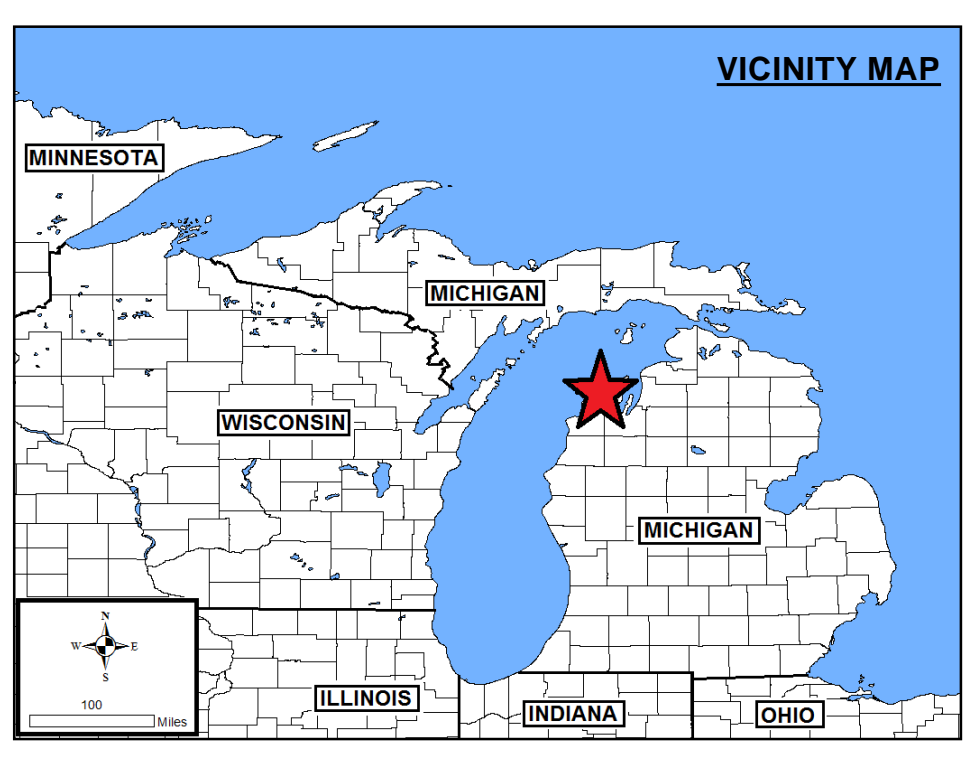
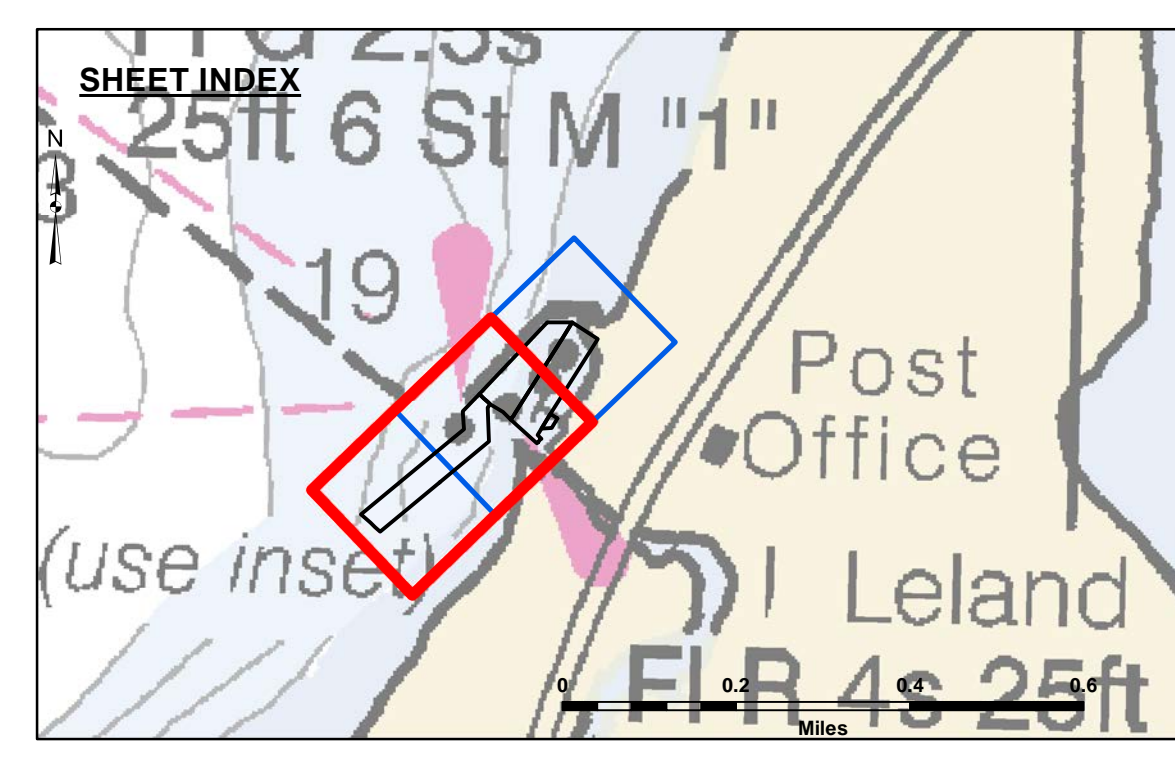


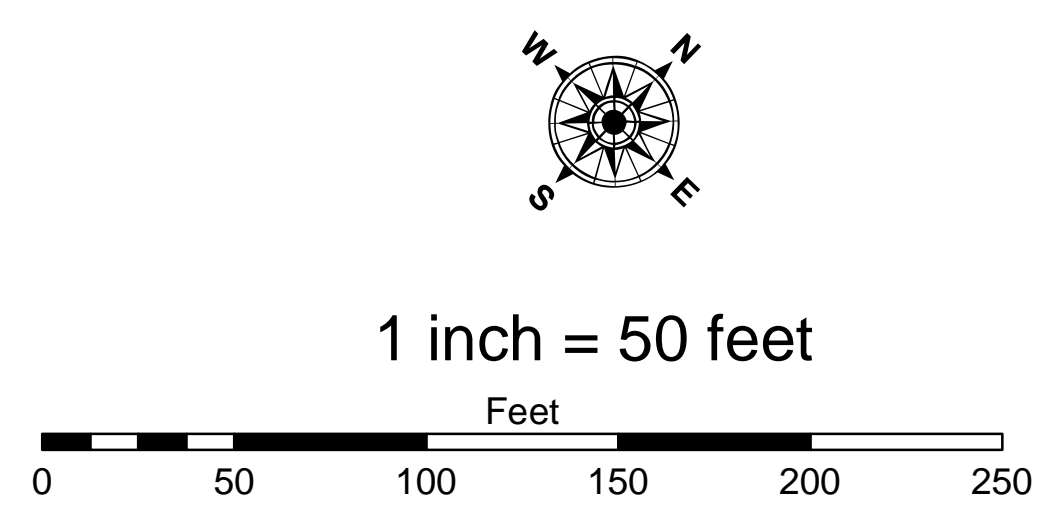
Disclaimer: The data represents the results of data collection... The user is responsible for the results of any of the application of the data for other than its intended purpose.

Approval table with columns: Submitted, Recommended, Approved, and rows for Surveyed By, Plotted By, Checked By.



- LEGEND: Cable Submarine, Cable Overhead, Channel Limits, Beacon, General, Contour Lines, Channel Limits

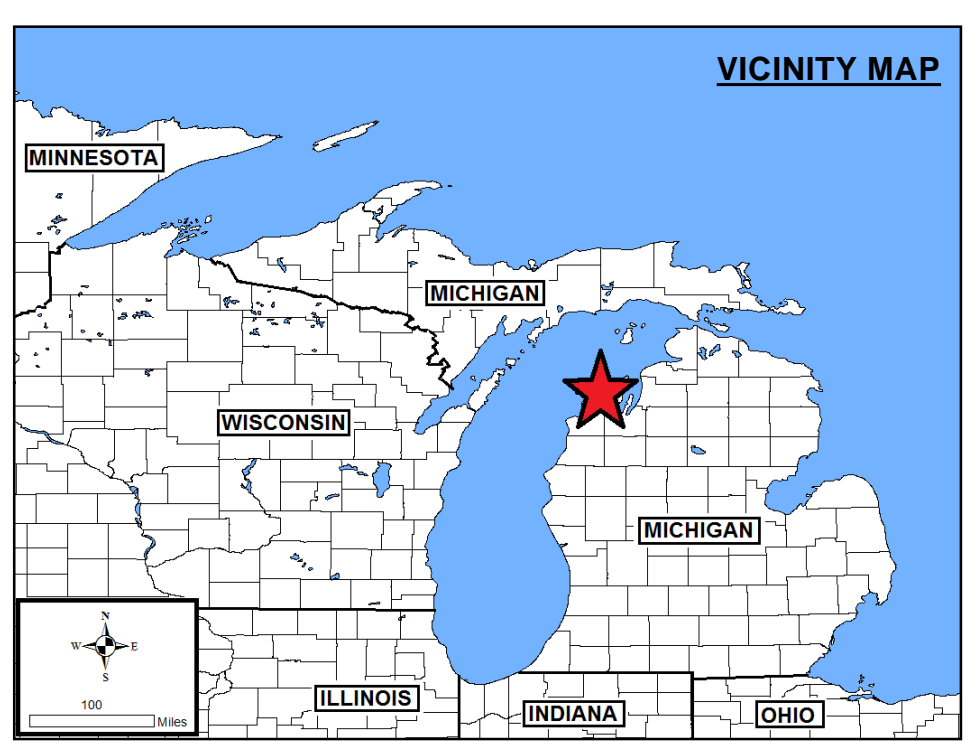
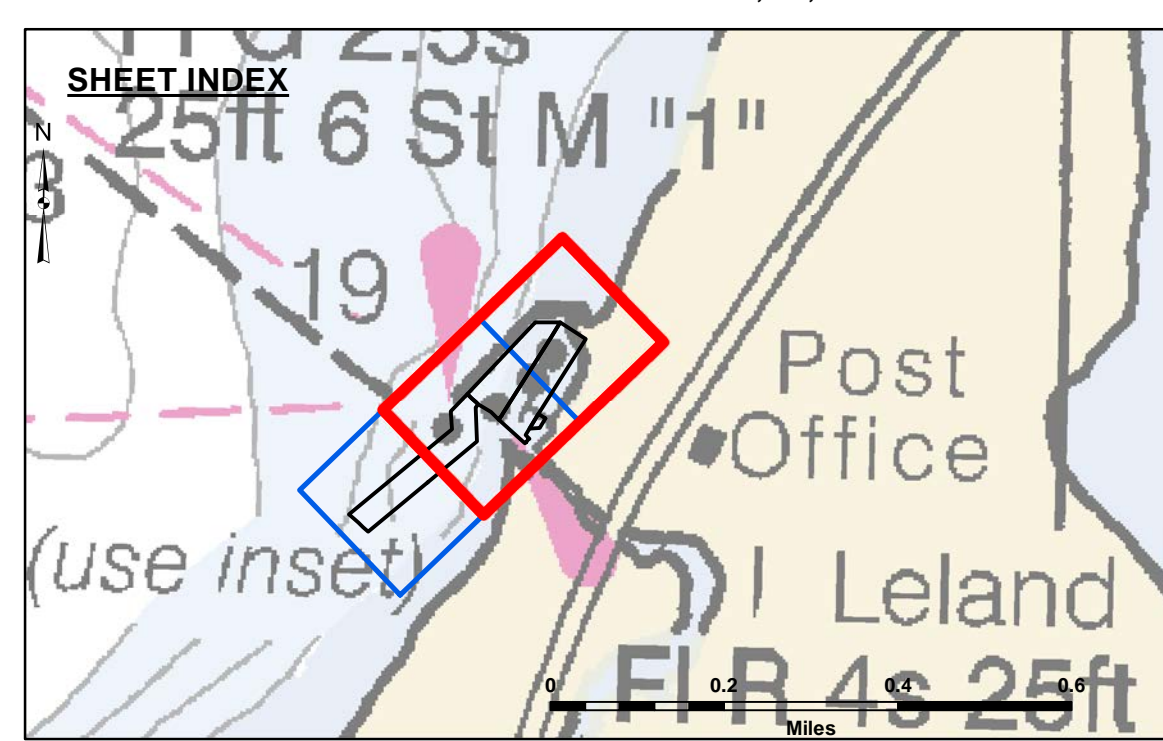
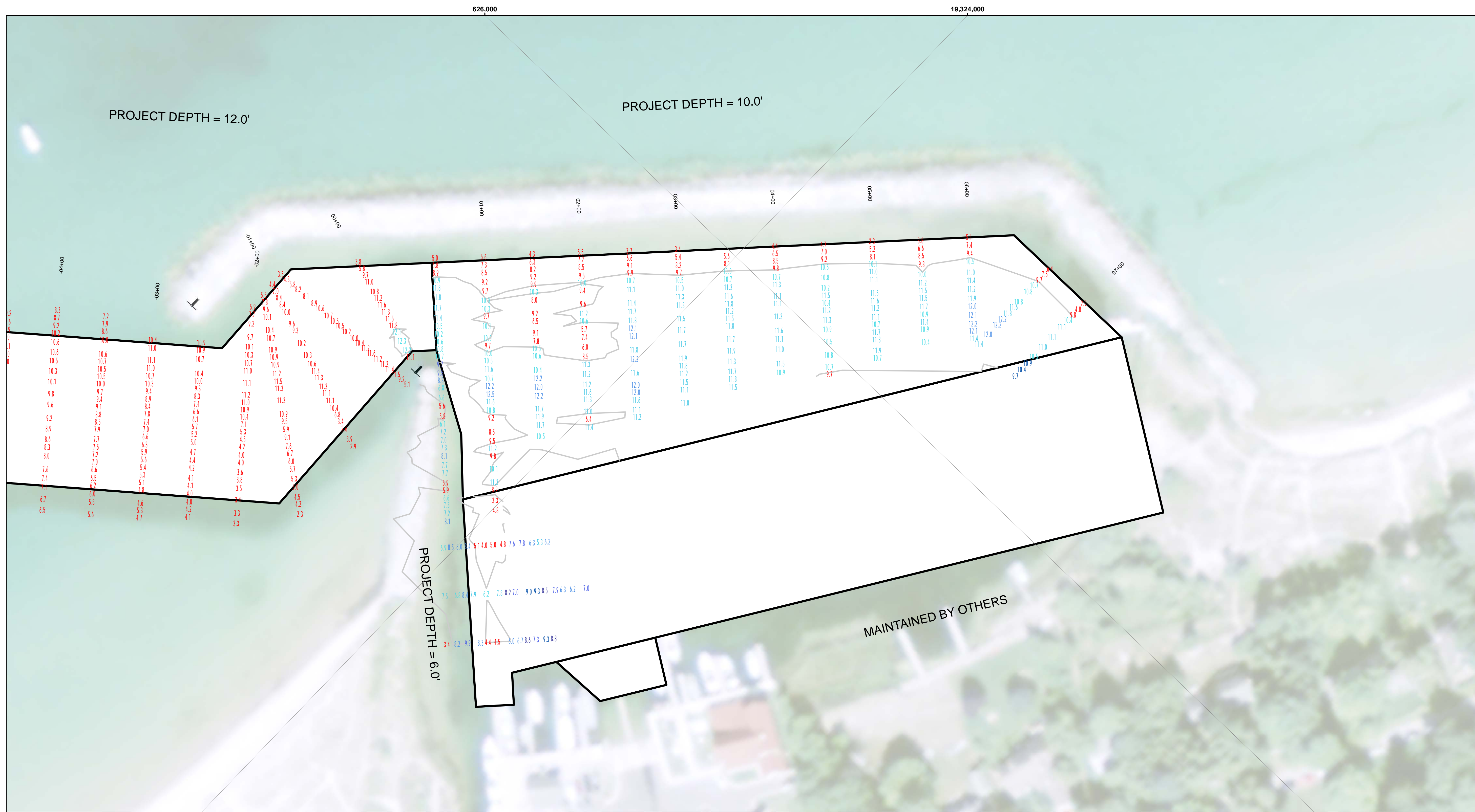
- SOUNDING LEGEND: LESS THAN PROJECT DEPTH, PROJECT DEPTH, PROJECT DEPTH +1', PROJECT DEPTH +2', PROJECT DEPTH +3', PROJECT DEPTH +4', PROJECT DEPTH +5'



NOTES: 1. THE SOUNDINGS INDICATED HEREIN ARE GENERALIZED DEPTHS AND ARE NOT REPRESENTATIVE OF THE FULL DATASET. 2. ELEVATIONS AND SOUNDING DEPTHS ARE REFERRED TO INTERNATIONAL GREAT LAKES DATUM 1985 (IGLD 85)...

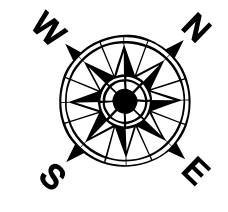
Leland Harbor, MI Leland Harbor LE\_01\_LND\_20230921\_CS 21 September 2023

Sheet Reference Number 1 of 2

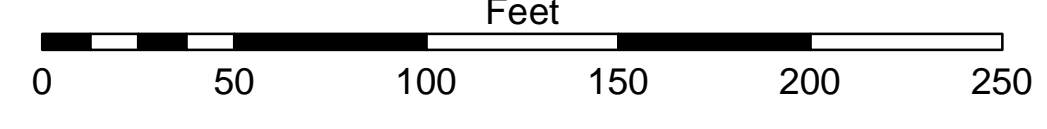


- LEGEND**
- ..... Cable Submarine
  - - - Cable Overhead
  - ▭ Channel Limits
  - ⊥ Beacon, General
  - Contour Lines
  - ▭ Channel Limits

- SOUNDING LEGEND**
- LESS THAN PROJECT DEPTH
  - PROJECT DEPTH
  - PROJECT DEPTH +1'
  - PROJECT DEPTH +2'
  - PROJECT DEPTH +3'
  - PROJECT DEPTH +4'
  - PROJECT DEPTH +5'



1 inch = 50 feet



**NOTES:**

1. THE SOUNDINGS INDICATED HEREIN ARE GENERALIZED DEPTHS AND ARE NOT REPRESENTATIVE OF THE FULL DATASET.
2. ELEVATIONS AND SOUNDING DEPTHS ARE REFERRED TO INTERNATIONAL GREAT LAKES DATUM 1985 (IGLD 85). LOW WATER DATUM (LWD) ZERO IS 577.5 FEET ABOVE MEAN WATER LEVEL AT FATHER POINT QUEBEC. WATER LEVEL READINGS ARE FROM A GAGE MARK ALONG THE SHEET STEEL WALL AT THE HARBOR BOAT RAMP IN LELAND, HARBOR, MI.
3. THE INFORMATION DEPICTED ON THIS MAP REPRESENTS THE RESULTS OF SURVEYS MADE ON DATES INDICATED AND CAN ONLY BE CONSIDERED AS INDICATING THE GENERAL CONDITIONS PRESENT AT THE TIME.
4. POSITIONING METHOD: TRIMBLE DGPS  
EQUIPMENT: ODOM CV 100 SINGLEBEAM ECHOSOUNDER  
SOFTWARE: HYPACK  
VESSEL: LAUNCH 3064
5. GRID COORDINATES ARE BASED ON THE MICHIGAN STATE PLANE COORDINATE SYSTEM, LAMBERT PROJECTION, MICHIGAN CENTRAL ZONE (2112). NORTH AMERICAN DATUM (NAD83). ALL COORDINATES SHOWN ARE IN U.S. SURVEY FEET. THE SOUNDINGS INDICATED HEREIN ARE GENERALIZED DEPTHS AND ARE NOT REPRESENTATIVE OF THE FULL DATASET.
6. UNLESS OTHERWISE NOTED PROJECT DEPTHS ARE 12.0, 10.0 & 6.0 FEET BELOW LWD

2012 AERIAL PHOTOGRAPHY DATA SOURCE: NAIP  
\*\* SHOALEST SOUNDING PER QUARTER PER REACH.



**DISCLAIMER:** The data represented by the results of data collection and processing for a specific US Army Corps of Engineers activity and indicates the general existing conditions. The user is responsible for the accuracy of the data for other than its intended purpose. The user is responsible for the accuracy of the data for other than its intended purpose.

**DISCLAIMER:** The United States Government furnishes these data and the recipient accepts and uses them with the express understanding that the data are not to be used for any purpose other than that for which they were prepared, or implied concerning the accuracy, completeness, reliability, usability or suitability for any particular purpose of the recipient. The recipient is responsible for the accuracy of the data under no liability whatsoever to any person by reason of any use made thereof. These data belong to the Government. Therefore the recipient may not transfer these data to others without also transferring this Disclaimer.

U.S. ARMY CORPS OF ENGINEERS DETROIT DISTRICT		
Submitted:	Surveyed By:	
Recommended:	Plotted By:	
Approved:	Chief, Survey Section	Chief, Technical Services

Leland Harbor, MI  
Leland Harbor  
LE\_01\_LND\_20230921\_CS  
21 September 2023

Sheet Reference Number  
2 of 2