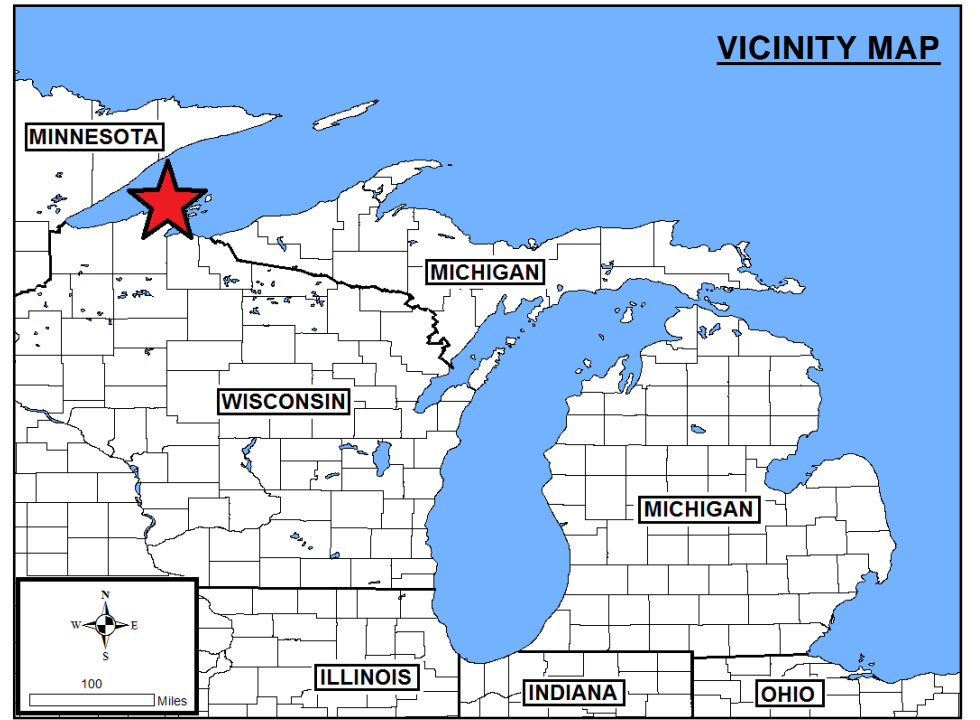
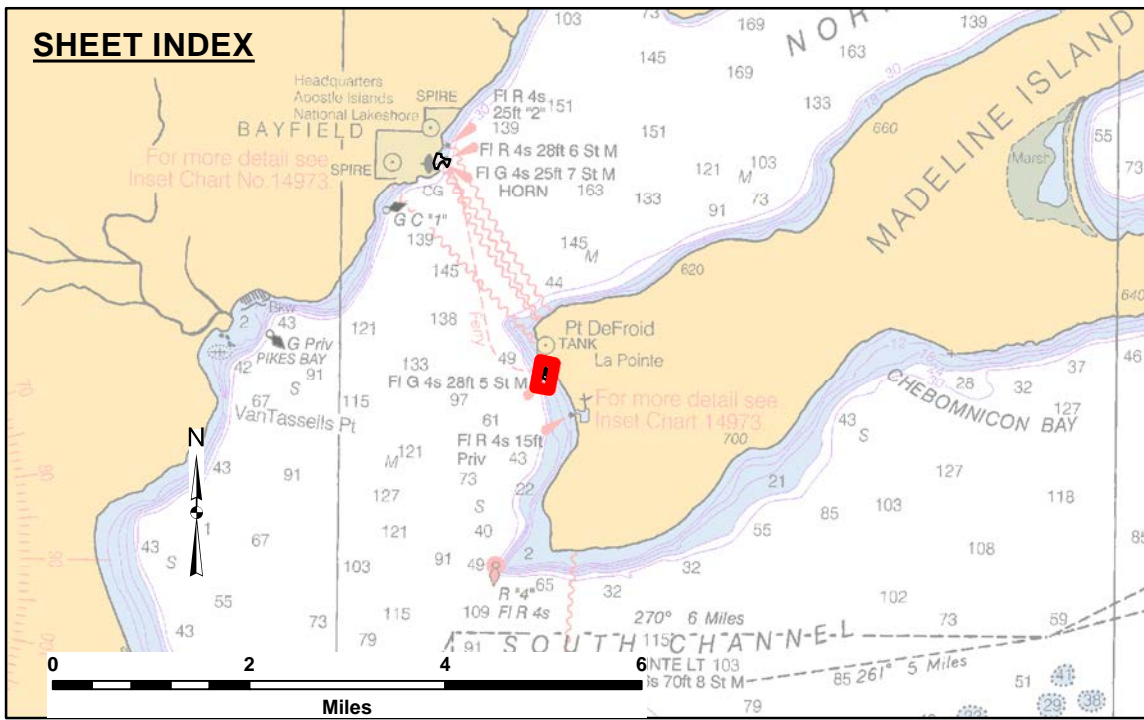


Disclaimer: The data presented in this chart is the result of a collection of data for a specific project. The US Army Corps of Engineers does not warrant the accuracy of the data. The user is responsible for the accuracy of the data for other than its intended purpose.

Accession: The United States Government furnishes this data and the recipient accepts and uses them with the express understanding that the data are not to be used for any purpose other than that for which they were provided. The recipient may not transfer these data to others without also transferring the disclaimer.

U.S. ARMY CORPS OF ENGINEERS DETROIT DISTRICT	Submitted By: _____	Surveyed By: _____
	Recommended By: _____ Chief, Survey Section	Plotted By: _____
	Approved By: _____ Chief, Technical Services	Checked By: _____

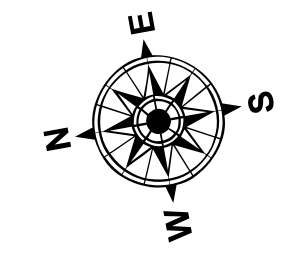
LA POINTE HARBOR, WI
La Pointe Harbor
LA_01_PTE_20230607_CS
07 June 2023



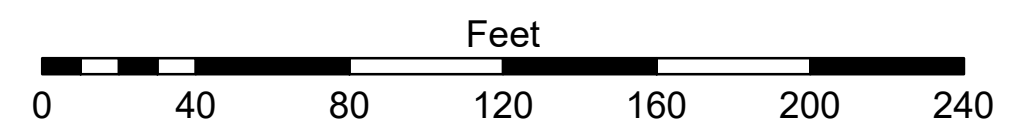
LEGEND
— Contour Lines
□ Channel Limits

SOUNDING LEGEND

- LESS THAN PROJECT DEPTH
- PROJECT DEPTH
- PROJECT DEPTH +1'
- PROJECT DEPTH +2'
- PROJECT DEPTH +3'
- PROJECT DEPTH +4'
- PROJECT DEPTH +5'



1 inch = 50 feet



- NOTES:**
- 1) THE CHARTED SOUNDINGS REPRESENT THE MINIMUM DEPTH MEASURED AT THE TIME OF THE SURVEY WITHIN THE 10' X 10' AREA CENTERED ON THE TEXT. DERIVED FROM A 1' X 1' AVERAGE DATASET AT CELL CENTER. THIS CHART SHOULD NOT BE USED FOR CHANNEL CLEARANCE OR VOLUME COMPUTATIONS. MINIMUM DEPTH DATA IS PRODUCED FOR STRIKE/SHOAL REMOVAL OPERATIONS AND NOTICE TO NAVIGATION INTERESTS.
 - 2) ALL SOUNDING DEPTHS ARE REFERENCED TO INTERNATIONAL GREAT LAKES DATUM 1985 (IGLD 85) LOW WATER DATUM ELEVATION 601.1 FEET ABOVE MEAN WATER LEVEL AT RIMOUSKI, QUEBEC. WATER LEVEL READINGS WERE OBTAINED WITH REAL TIME KINEMATIC (RTK) GLOBAL POSITIONING SYSTEM (GPS) VALUES. DEPTHS ARE MEASURED USING AN R2SONIC 2024 MULTIBEAM SONAR.
 - 3) HORIZONTAL POSITIONING IS DETERMINED USING REAL TIME KINEMATIC (RTK) GLOBAL NAVIGATION SATELLITE SYSTEM (GNSS) CORRECTIONS FROM A BASE STATION LOCATED AT US ARMY CORPS OF ENGINEERS (USACE) CONTROL POINT 910. A PK MAIL SET NEAR THE NORTHEAST CORNER OF THE PARKING LOT AT THE DNR BOAT RAMP, BAYFIELD, WI. THE GPS RECEIVER IS MANUFACTURED BY APPLANIX MARINE POS/MV VER. 4.0.
 - 4) THE GRID COORDINATE SYSTEM IS WISCONSIN STATE PLANE, NORTH ZONE (4801), NORTH AMERICAN DATUM 1983 (NAD83), US SURVEY FOOT.
 - 5) THE PROJECT DEPTHS FOR THIS AREA ARE 8.0' AND 10.0'.
 - 6) 2010 AERIAL PHOTOGRAPHY DATA SOURCE: USGS

Sheet Reference Number
1 of 1