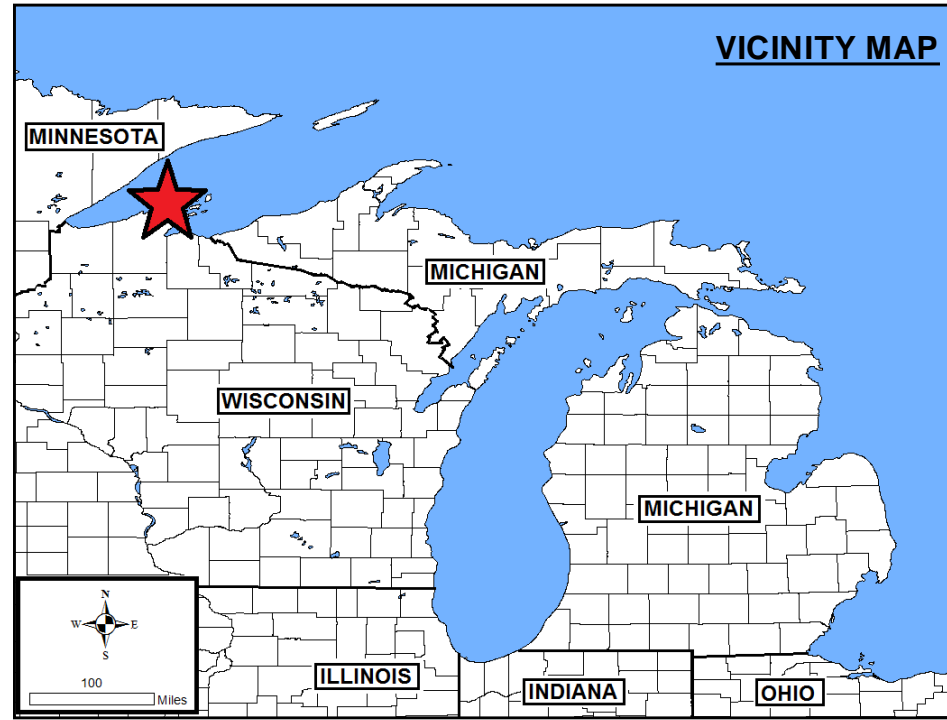
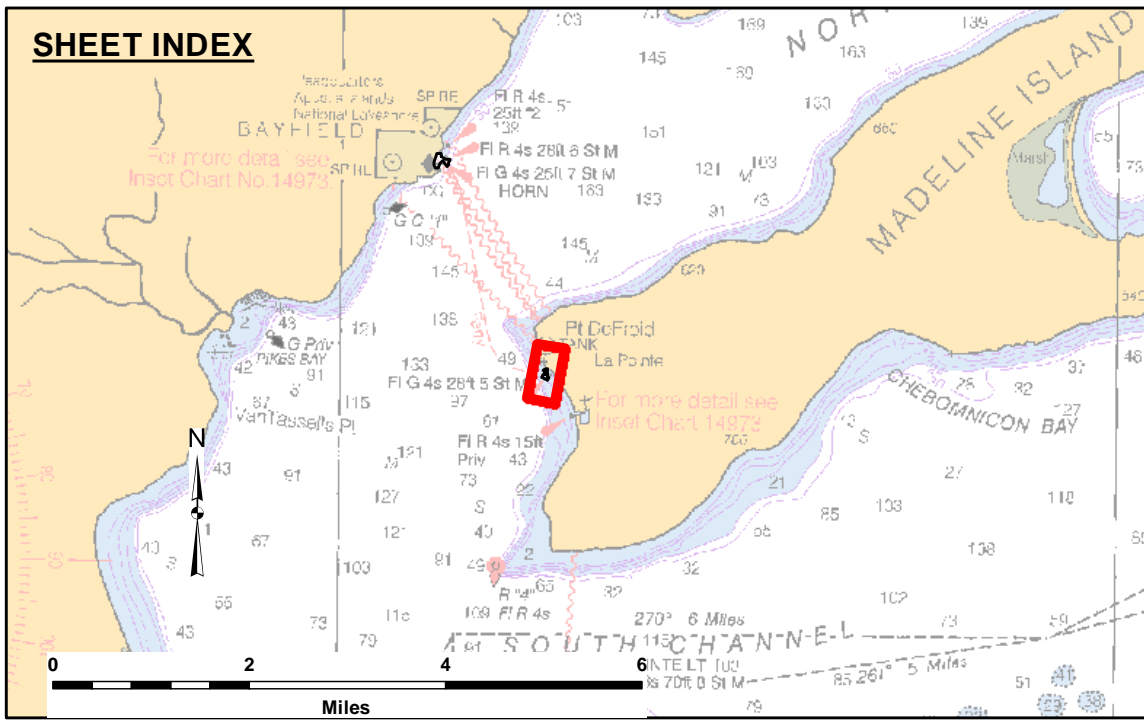


PROJECT DEPTH = 8.0'

PROJECT DEPTH = 10.0'

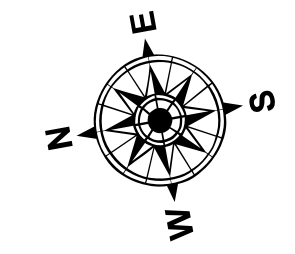


LEGEND

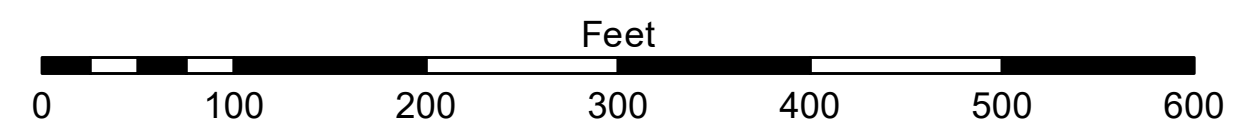
- Contour Lines
- ▭ Channel Limits

SOUNDING LEGEND

- Red: LESS THAN PROJECT DEPTH
- Light Blue: PROJECT DEPTH
- Light Blue: PROJECT DEPTH +1'
- Light Blue: PROJECT DEPTH +2'
- Light Blue: PROJECT DEPTH +3'
- Light Blue: PROJECT DEPTH +4'
- Dark Blue: PROJECT DEPTH +5'



1 inch = 100 feet



- NOTES:**
- 1) THE CHARTED SOUNDINGS REPRESENT THE MINIMUM DEPTH MEASURED AT THE TIME OF THE SURVEY WITHIN THE 10' X 10' AREA CENTERED ON THE TEXT. DERIVED FROM A 1' X 1' AVERAGE DATASET AT CELL CENTER. THIS CHART SHOULD NOT BE USED FOR CHANNEL CLEARANCE OR VOLUME COMPUTATIONS. MINIMUM DEPTH DATA IS PRODUCED FOR STRIKE/SHOAL REMOVAL OPERATIONS AND NOTICE TO NAVIGATION INTERESTS.
 - 2) ALL SOUNDING DEPTHS ARE REFERENCED TO INTERNATIONAL GREAT LAKES DATUM 1985 (IGLD 85) LOW WATER DATUM ELEVATION 601.1 FEET ABOVE MEAN WATER LEVEL AT RIMOUSKI, QUEBEC. WATER LEVEL READINGS WERE OBTAINED WITH REAL TIME KINEMATIC (RTK) GLOBAL POSITIONING SYSTEM (GPS) VALUES. DEPTHS ARE MEASURED USING AN R2SONIC 2024 MULTIBEAM SONAR.
 - 3) HORIZONTAL POSITIONING IS DETERMINED USING REAL TIME KINEMATIC (RTK) GLOBAL NAVIGATION SATELLITE SYSTEM (GNSS) CORRECTIONS FROM A BASE STATION LOCATED AT US ARMY CORPS OF ENGINEERS (USACE) CONTROL POINT 910. A PK NAIL SET NEAR THE NORTHEAST CORNER OF THE PARKING LOT AT THE DNR BOAT RAMP, BAYFIELD, WI. THE GPS RECEIVER IS MANUFACTURED BY APPLANIX MARINE POS/MV VER. 4.0.
 - 4) THE GRID COORDINATE SYSTEM IS WISCONSIN STATE PLANE, NORTH ZONE (4801), NORTH AMERICAN DATUM 1983 (NAD83), US SURVEY FOOT.
 - 5) THE PROJECT DEPTHS FOR THIS AREA ARE 8.0' AND 10.0'.
 - 6) 2010 AERIAL PHOTOGRAPHY DATA SOURCE: USGS



Disclaimer: The data represents the results of data collection and processing for a specific US Army Corps of Engineers activity and indicates the general existing conditions. Engineers assume no liability for the accuracy, completeness, or implied warranty of any particular purpose of the data. The user is responsible for the accuracy, completeness, or implied warranty of any particular purpose of the data. The user is responsible for the accuracy, completeness, or implied warranty of any particular purpose of the data. The user is responsible for the accuracy, completeness, or implied warranty of any particular purpose of the data. The user is responsible for the accuracy, completeness, or implied warranty of any particular purpose of the data.

U.S. ARMY CORPS OF ENGINEERS
DETROIT DISTRICT

Submitted:	Surveyed By:
Recommended:	Plotted By:
Approved:	Checked By:

Chief, Survey Section
Chief, Technical Services

LA POINTE HARBOR, WI
La Pointe Harbor
LA_01_PTE_20210413_CS
13 April 2021

Sheet Reference Number
1 of 1