

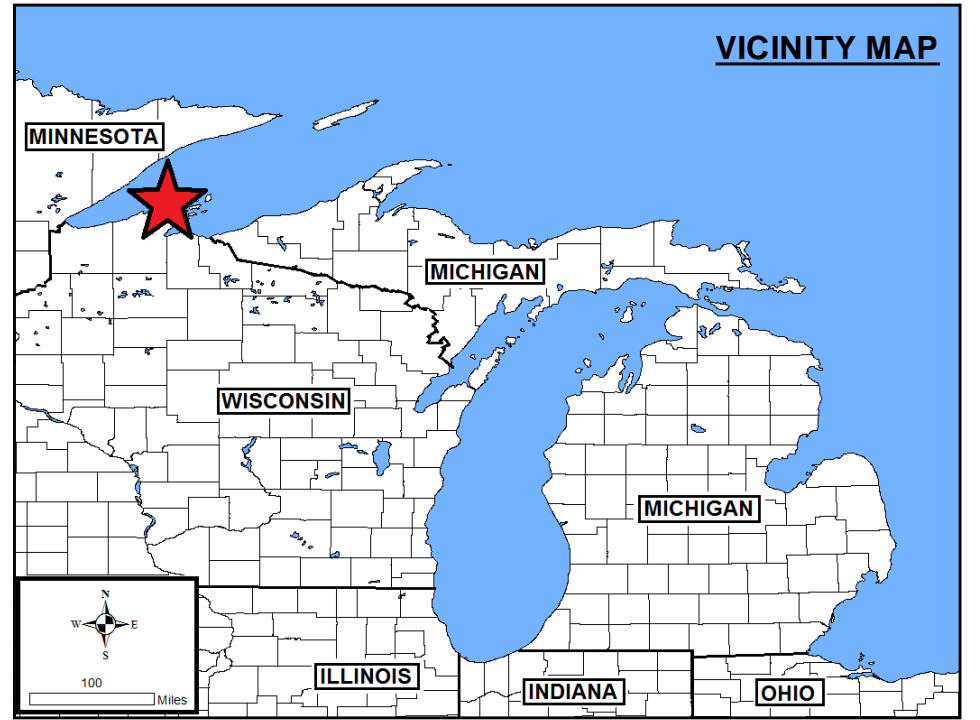
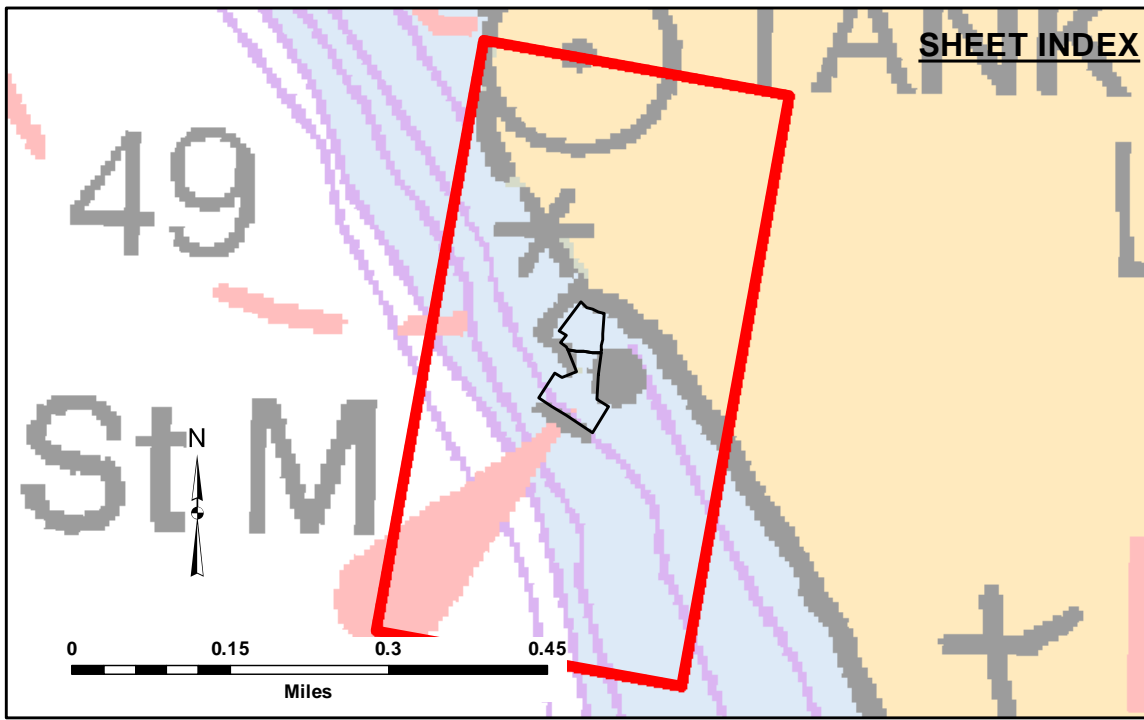
**Disclaimer:** The data represents the results of data collection and processing for a specific US Army Corps of Engineers activity and indicates the general existing conditions. The user is responsible for the accuracy of the data for any of the application of the data for other than its intended purpose.

**Access Constraints:** The United States Government furnishes these data and the recipient accepts and uses them with the express understanding that the data are provided for informational purposes only, and are not intended for use in any legal proceeding, or for any purpose other than that for which they were originally intended. The recipient may not transfer these data to others without also transferring this Disclaimer.

U.S. ARMY CORPS OF ENGINEERS DETROIT DISTRICT		
Submitted By:	Surveyed By:	
Recommended By:	Plotted By:	
Approved:	Checked By:	

**LA POINTE HARBOR, WI**  
La Pointe Harbor  
LA\_01\_PTE\_20201008\_CS  
08 October 2020

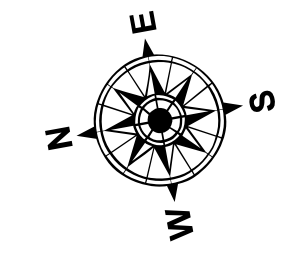
**Sheet Reference Number**  
1 of 1



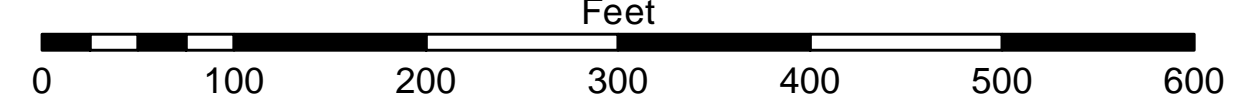
**LEGEND**  
— Contour Lines  
□ Channel Limits

**SOUNDING LEGEND**

- LESS THAN PROJECT DEPTH
- PROJECT DEPTH
- PROJECT DEPTH +1'
- PROJECT DEPTH +2'
- PROJECT DEPTH +3'
- PROJECT DEPTH +4'
- PROJECT DEPTH +5'



1 inch = 100 feet



**NOTES:**

- 1) THE INFORMATION DEPICTED ON THIS CHART REPRESENTS THE RESULTS OF SURVEYS MADE ON THE DATE INDICATED AND CAN ONLY BE CONSIDERED AS INDICATING THE GENERAL CONDITIONS PRESENT AT THAT TIME.
- 2) SOUNDING DEPTHS ARE REFERENCED TO INTERNATIONAL GREAT LAKES DATUM 1985 (IGLD85) LOW WATER DATUM ELEVATION 601.1 FEET ABOVE MEAN WATER LEVEL AT RIMOUSKI QUEBEC. WATER LEVEL READINGS WERE OBTAINED WITH RTK GPS VALUES. DEPTHS ARE MEASURED USING A ROSS LABS 825B PORTABLE SURVEY SOUNDER.
- 3) HORIZONTAL POSITIONING IS DETERMINED USING THE REAL TIME KINEMATIC (RTK) GLOBAL NAVIGATION SATELLITE SYSTEM (GNSS). CORRECTIONS ARE FROM A BASE STATION LOCATED AT U.S. ARMY CORPS OF ENGINEERS (USACE) CONTROL POINT 910, A PK NAIL SET IN THE PARKING LOT OF THE BOAT RAMP IN BAYFIELD. THE GPS RECEIVERS ARE MANUFACTURED BY TRIMBLE, MODELS SPA751 AND R10.
- 4) THE GRID COORDINATE SYSTEM SHOWN IS REFERENCED TO THE WISCONSIN STATE PLANE COORDINATE SYSTEM, LAMBERT PROJECTION, NORTH ZONE (4801), NORTH AMERICAN DATUM OF 1983 (NAD83), US SURVEY FOOT.
- 5) THE PROJECT DEPTHS FOR THIS AREA ARE 8.0' AND 10.0'.