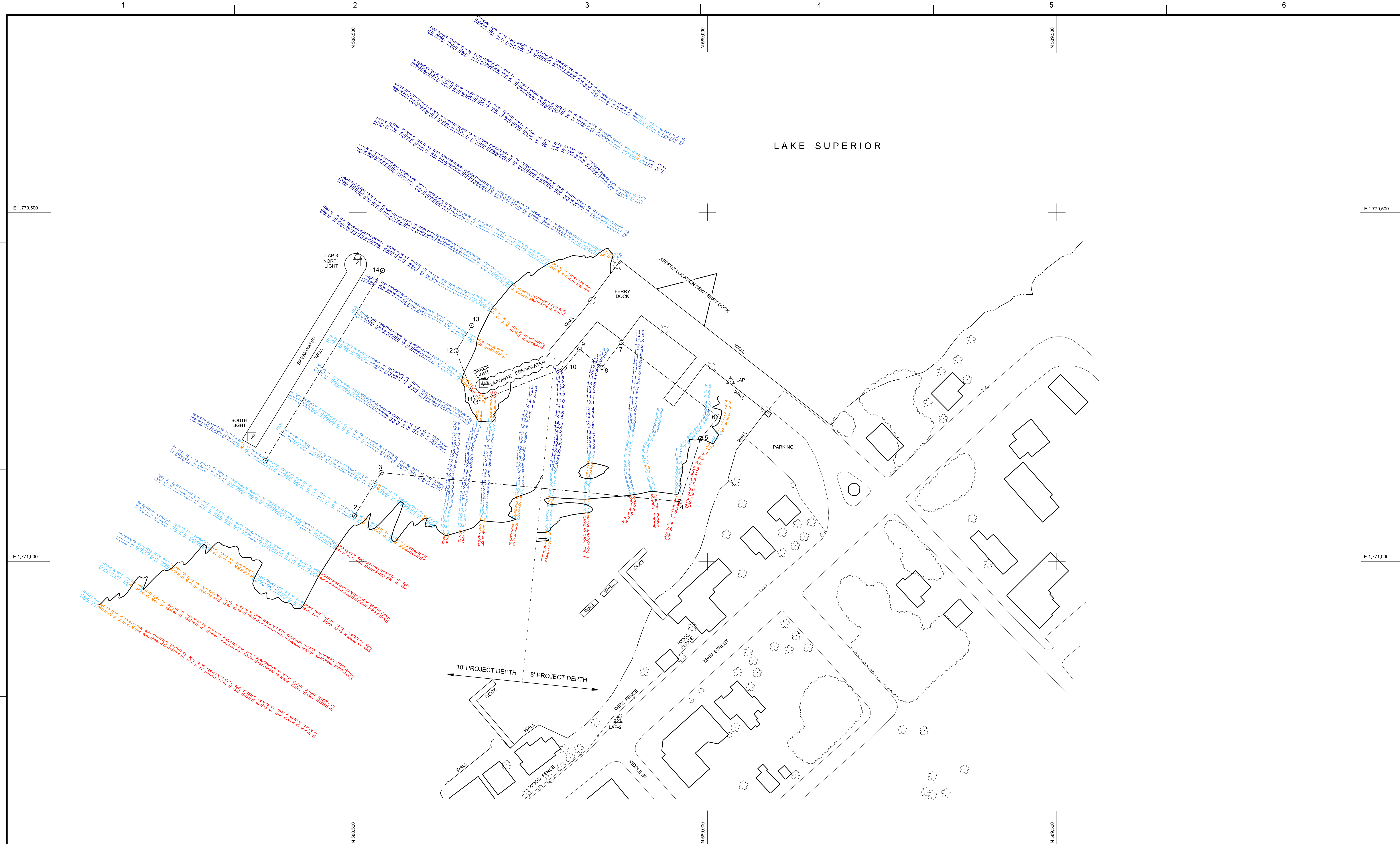


LAKE SUPERIOR



1) THE INFORMATION DEPICTED ON THIS MAP REPRESENTS THE RESULTS OF SURVEYS MADE ON MAY 23, 2019 BY A. ALBERTSON AND K. COOK AND CAN ONLY BE CONSIDERED AS INDICATING THE GENERAL CONDITIONS PRESENT AT THAT TIME.

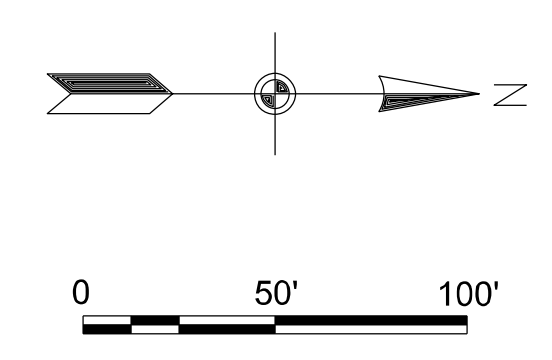
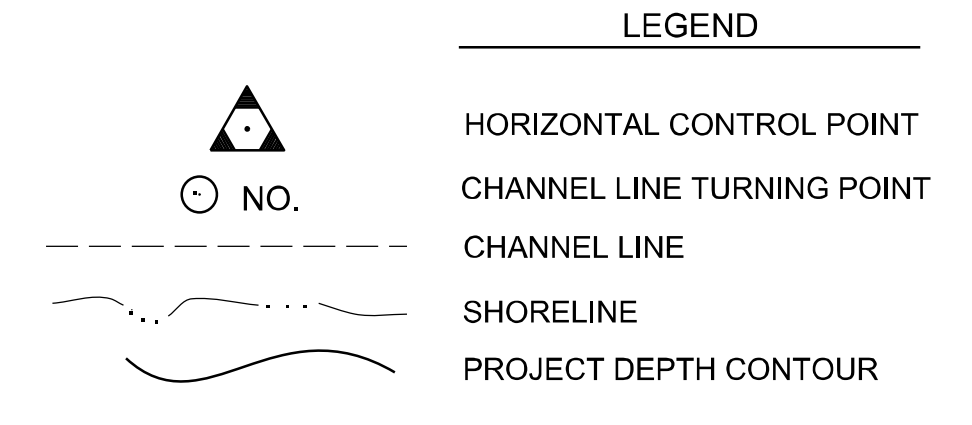
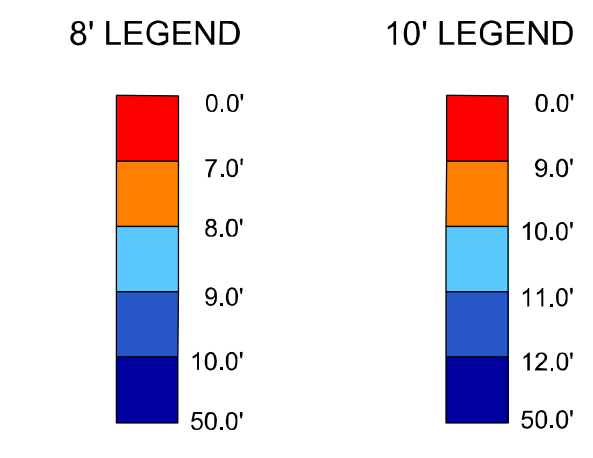
2) SOUNDING DEPTHS ARE REFERENCED TO INTERNATIONAL GREAT LAKES DATUM 1985 (IGLD 85) LOW WATER DATUM ELEVATION 601.1 FEET ABOVE MEAN WATER LEVEL AT REMOUSKI QUEBEC. WATER LEVEL READINGS WERE OBTAINED WITH RTK GPS. DEPTHS ARE MEASURED USING A ROSS LABORATORIES MODEL 825B PORTABLE SURVEY SOUNDER.

3) THE GRID COORDINATE SYSTEM SHOWN IS REFERENCED TO THE WISCONSIN STATE PLANE COORDINATE SYSTEM, LAMBERT PROJECTION, NORTH ZONE (4801), NORTH AMERICAN DATUM 1983 (NAD 83), US SURVEY FOOT.

4) HORIZONTAL POSITIONING IS DETERMINED USING THE REAL TIME KINEMATIC (RTK) GLOBAL NAVIGATION SATELLITE SYSTEM (GNSS). CORRECTIONS ARE FROM A BASE STATION LOCATED AT U.S. ARMY CORPS OF ENGINEERS (USACE) CONTROL POINT 910, A PK NAIL SET IN THE PARKING LOT OF THE BOAT RAMP IN BAYFIELD. THE GPS RECEIVER IS MANUFACTURED BY TRIMBLE, MODEL SP9751.

5) THE BASE MAP FEATURES DEPICTED ON THIS MAP WERE DIGITIZED FROM EXISTING CHARTS AND ARE OUTDATED AND INACCURATE.

6) THE PROJECT DEPTHS FOR THIS AREA ARE 8.0' AND 10.0'.



COORDINATE TABLE

POINT	DESCRIPTION	NORTHING	EASTING
1	CHANNEL LINE PT	588367.501	1770855.683
2	CHANNEL LINE PT	588495.299	1770954.379
3	CHANNEL LINE PT	588533.400	1770972.500
4	CHANNEL LINE PT	588560.792	1770914.173
5	CHANNEL LINE PT	588690.292	1770823.774
6	CHANNEL LINE PT	589015.692	1770792.775
7	CHANNEL LINE PT	588876.694	1770686.279
8	CHANNEL LINE PT	588849.295	1770721.979
9	CHANNEL LINE PT	588817.395	1770695.790
10	CHANNEL LINE PT	588795.295	1770722.880
11	CHANNEL LINE PT	588668.697	177071.480
12	CHANNEL LINE PT	588640.598	1770698.292
13	CHANNEL LINE PT	588663.098	1770681.883
14	CHANNEL LINE PT	588635.200	1770583.186
LAP 1	BRASS CORPS DISK	589023.526	1770753.889
LAP 2	BRASS CORPS DISK	588972.115	1771228.360
LAP 3	BRASS CORPS DISK	588987.114	1770583.547
LAPONTE	NOSS DISK	588881.874	1770742.310
NAV. AID SOUTH LIGHT		588348.16	1770823.80
NAV. AID GREEN LIGHT		588679.95	1770747.69
NAV. AID NORTH LIGHT		588487.73	1770573.87

U.S. ARMY CORPS OF ENGINEERS
DETROIT DISTRICT
DETROIT, MI

FILE NAME: LPT01.DWG
DATE: 05/23/2019
SCALE: 1" = 40'

DESIGNED BY: [Name]
CHECKED BY: [Name]
APPROVED BY: [Name]

LA POINTE HARBOR
WISCONSIN

CONDITION OF CHANNEL
MAY 2019