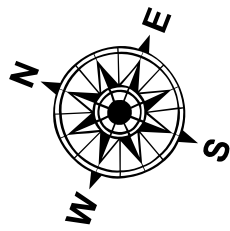


**LEGEND**

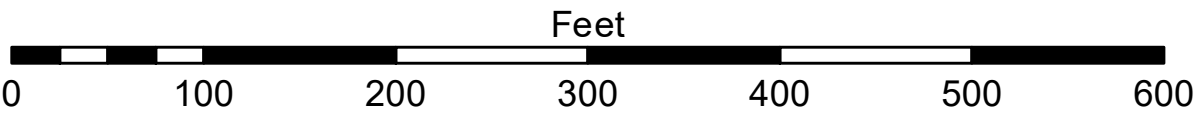
- ..... Cable Submarine
- - Cable Overhead
- Channel\_Limits
- Contour Lines

**SOUNDING LEGEND**

- LESS THAN PROJECT DEPTH
- PROJECT DEPTH
- PROJECT DEPTH +1'
- PROJECT DEPTH +2'
- PROJECT DEPTH +3'
- PROJECT DEPTH +4'
- PROJECT DEPTH +5'



1 inch = 100 feet



- NOTES:**
1. THE CHARTED SOUNDINGS REPRESENT THE MINIMUM DEPTH MEASURED AT THE TIME OF THE SURVEY WITHIN THE 10 X 10 AREA CENTERED ON THE TEXT. DERIVED FROM A 1" X 1" AVERAGE DATASET AT CELL CENTER. THIS CHART SHOULD NOT BE USED FOR CHANNEL CLEARANCE OR VOLUME COMPUTATIONS. MINIMUM DEPTH DATA IS PRODUCED FOR STRIKE/SOAL REMOVAL OPERATIONS AND NOTICE TO NAVIGATION INTERESTS.
  2. ALL SOUNDING DEPTHS ARE REFERENCED TO INTERNATIONAL GREAT LAKES DATUM 1985 (IGLD 85) LOW WATER DATUM ELEVATION 601.1 FEET ABOVE MEAN WATER LEVEL AT RIMOUSKI QUEBEC. WATER LEVEL READINGS WERE OBTAINED WITH REAL TIME KINEMATIC (RTK) GLOBAL POSITIONING SYSTEM (GPS) VALUES. DEPTHS ARE MEASURED USING AN R2SONIC 2024 MULTIBEAM SONAR.
  3. HORIZONTAL POSITIONING IS DETERMINED USING RTK GPS CORRECTIONS FROM A BASE STATION. THE GPS RECEIVER IS MANUFACTURED BY APPLANIX MARINE POS/MV VER. 4.0.
  4. THE GRID COORDINATE SYSTEM IS MICHIGAN STATE PLANE, NORTH ZONE (2111), NORTH AMERICAN DATUM 1983 (NAD83), US SURVEY FOOT.
  5. THE PROJECT DEPTHS FOR THIS WATERWAY ARE: 32.0', 30.0', 28.0', 27.0', 26.0' & 25' AS INDICATED HEREON.
  6. IMAGERY SOURCED FROM: ESRI & 2014 NAIP IMAGERY

**Keweenaw Waterway, MI**  
**Keweenaw Waterway**  
**KW\_01\_NAW\_20200903\_CS**  
**03 September 2020**

**Sheet**  
**Reference**  
**Number**  
**27 of 37**

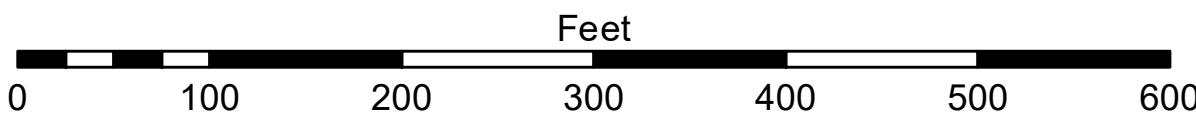
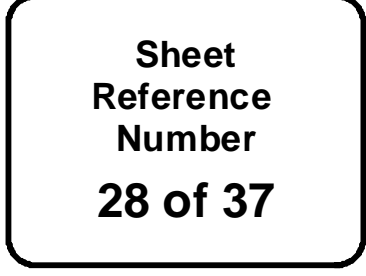


**DISCLAIMER:** The data presented in the results of data collection is for informational purposes only. The US Army Corps of Engineers does not warrant the accuracy, completeness, or reliability of the data. The user is responsible for the results of any application of the data for other than its intended purpose.

**ACCESS RESTRICTIONS:** The United States Government (USG) provides these data and the recipient accepts and uses them with the express understanding that the data are not to be used for any purpose other than that for which they were provided. The USG does not warrant the accuracy, completeness, or reliability of the data. The user is responsible for the results of any application of the data for other than its intended purpose.

U.S. ARMY CORPS OF ENGINEERS DETROIT DISTRICT		
Submitted:	Surveyed By:	
Recommended:	Plotted By:	
Approved:	Checked By:	

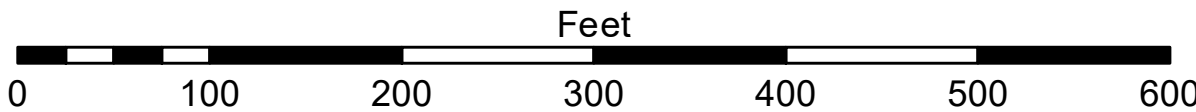




**NOTES:**

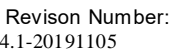
1. THE CHARTED SOUNDINGS REPRESENT THE MINIMUM DEPTH MEASURED AT THE TIME OF THE SURVEY WITHIN THE 10' X 10' AREA CENTERED ON THE TEXT, DERIVED FROM A 1" X 1" AVERAGE DATASET AT CELL CENTER. THIS CHART SHOULD NOT BE USED FOR CHANNEL CLEARANCE OR VOLUME COMPUTATIONS. MINIMUM DEPTH DATA IS PRODUCED FOR STRIKE/SWAL REMOVAL OPERATIONS AND NOTICE TO NAVIGATION INTERESTS.
2. ALL SOUNDING DEPTHS ARE REFERENCED TO INTERNATIONAL GREAT LAKES DATUM 1985 (GLD 85) LOW WATER DATUM ELEVATION 601.1 FEET ABOVE MEAN WATER LEVEL AT RIMOUKI QUEBEC. WATER LEVEL READINGS WERE OBTAINED WITH REAL TIME KINEMATIC (RTK) GLOBAL POSITIONING SYSTEM (GPS) VALUES. DEPTHS ARE MEASURED USING AN RZSONIC 2024 MULTIBEAM SONAR.
3. HORIZONTAL POSITIONING IS DETERMINED USING RTK GPS CORRECTIONS FROM A BASE STATION. THE GPS RECEIVER IS MANUFACTURED BY APPLANIX MARINE POS/MV VER. 4.0.
4. THE GRID COORDINATE SYSTEM IS MICHIGAN STATE PLANE, NORTH ZONE (2111), NORTH AMERICAN DATUM 1983 (NAD83), US SURVEY FOOT.
5. THE PROJECT DEPTHS FOR THIS WATERWAY ARE: 32.0', 30.0', 28.0', 27.0', 26.0' & 25' AS INDICATED HEREON.
6. IMAGERY SOURCED FROM: ESRI & 2014 NAIIP IMAGERY



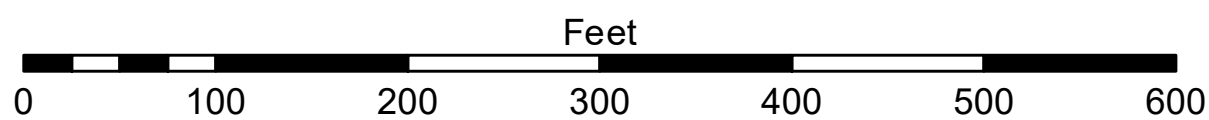


**NOTES:**

1. THE CHARTED SOUNDINGS REPRESENT THE MINIMUM DEPTH MEASURED AT THE TIME OF THE SURVEY WITHIN THE 10' X 10' AREA CENTERED ON THE TEXT, DERIVED FROM A 1" X 1" AVERAGE DATASET AT CELL CENTER. THIS CHART SHOULD NOT BE USED FOR CHANNEL CLEARANCE OR VOLUME COMPUTATIONS. MINIMUM DEPTH DATA IS PRODUCED FOR STRIKE/SWAL REMOVAL OPERATIONS AND NOTICE TO NAVIGATION INTERESTS.
2. ALL SOUNDING DEPTHS ARE REFERENCED TO INTERNATIONAL GREAT LAKES DATUM 1985 (GLD 85) LOW WATER DATUM ELEVATION 601.1 FEET ABOVE MEAN WATER LEVEL AT RIMOUSKI QUEBEC. WATER LEVEL READINGS WERE OBTAINED WITH REAL TIME KINEMATIC (RTK) GLOBAL POSITIONING SYSTEM (GPS) VALUES. DEPTHS ARE MEASURED USING AN RZSONIC 2024 MULTIBEAM SONAR.
3. HORIZONTAL POSITIONING IS DETERMINED USING RTK GPS CORRECTIONS FROM A BASE STATION. THE GPS RECEIVER IS MANUFACTURED BY APPLINX MARINE POS/MV VER. 4.0.
4. THE GRID COORDINATE SYSTEM IS MICHIGAN STATE PLANE, NORTH ZONE (2111), NORTH AMERICAN DATUM 1983 (NAD83), US SURVEY FOOT.
5. THE PROJECT DEPTHS FOR THIS WATERWAY ARE: 32.0', 30.0', 28.0', 27.0', 26.0' & 25' AS INDICATED HEREON.
6. IMAGERY SOURCED FROM: ESRI & 2014 NAIIP IMAGERY

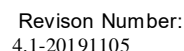




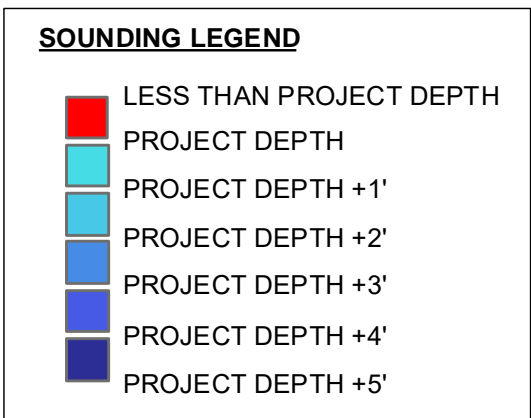
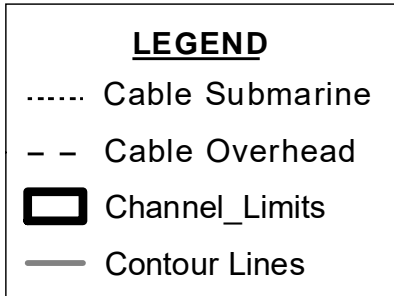
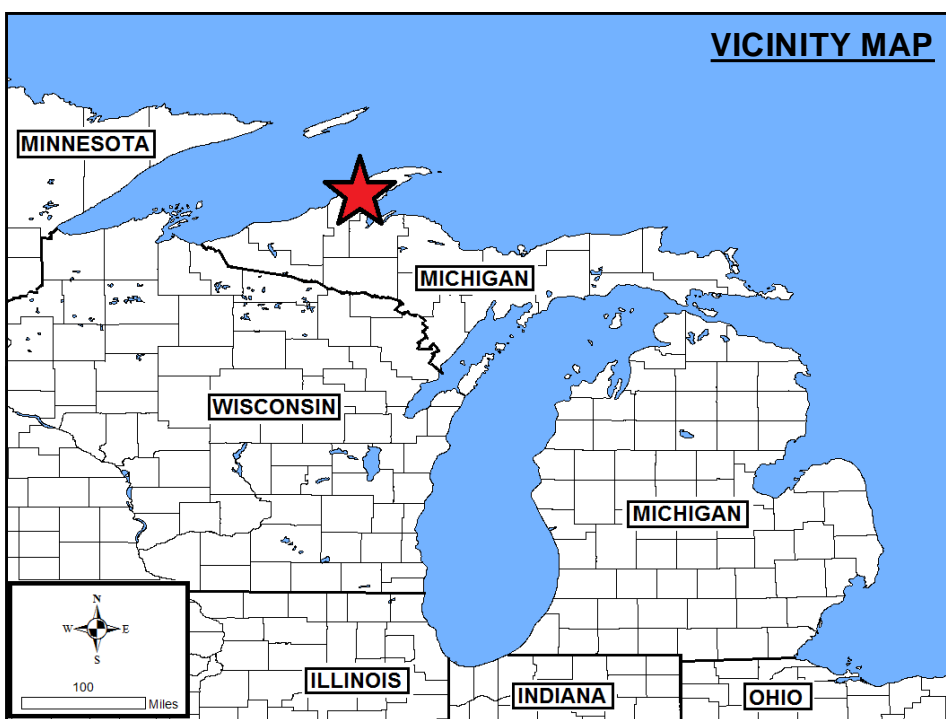
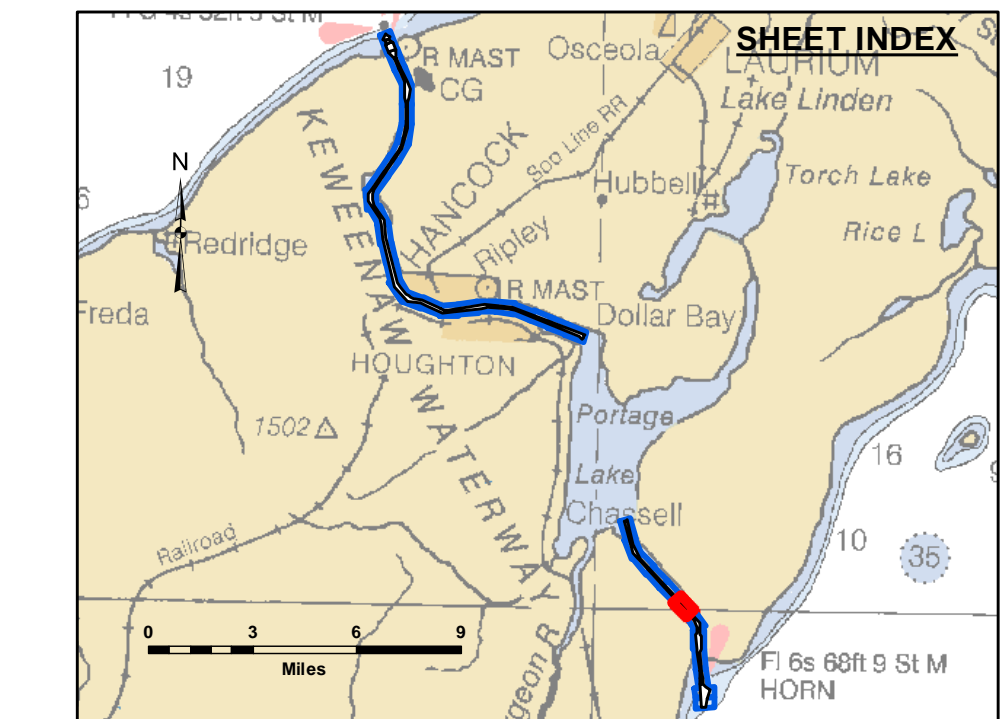
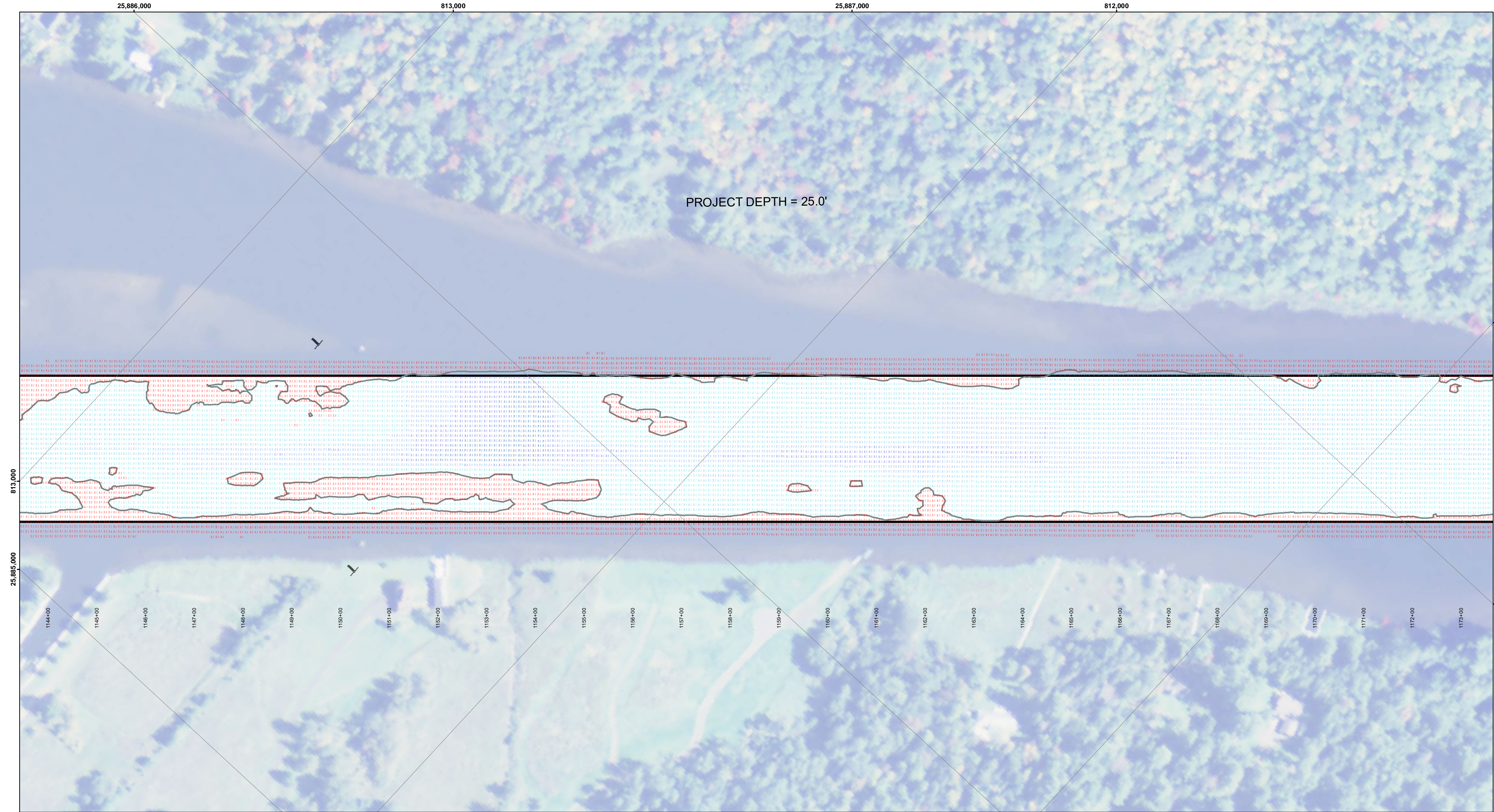


**NOTES:**

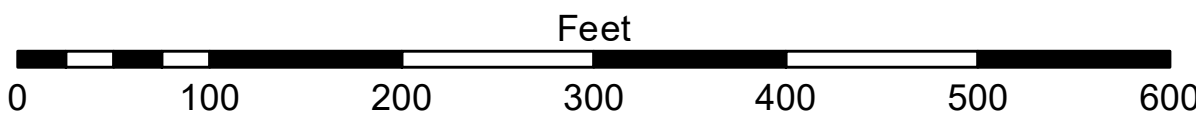
1. THE CHARTED SOUNDINGS REPRESENT THE MINIMUM DEPTH MEASURED AT THE TIME OF THE SURVEY WITHIN THE 10' X 10' AREA CENTERED ON THE TEXT, DERIVED FROM A 1" X 1" AVERAGE DATASET AT CELL CENTER. THIS CHART SHOULD NOT BE USED FOR CHANNEL CLEARANCE OR VOLUME CALCULATIONS. MINIMUM DEPTH DATA IS PRODUCED FOR STRIKE/SWATH REMOVAL OPERATIONS AND NOTICE TO NAVIGATION INTERESTS.
2. ALL SOUNDING DEPTHS ARE REFERENCED TO INTERNATIONAL GREAT LAKES DATUM 1985 (IGLD 85) LOW WATER DATUM ELEVATION 801.1 FEET ABOVE MEAN WATER LEVEL AT RIMOUSKI QUEBEC. WATER LEVEL READINGS WERE OBTAINED WITH REAL TIME KINEMATIC (RTK) GLOBAL POSITIONING SYSTEM (GPS) VALUES. DEPTHS ARE MEASURED USING AN RS200C 2024 MULTIBEAM SONAR.
3. HORIZONTAL POSITIONING IS DETERMINED USING RTK GPS CORRECTIONS FROM A BASE STATION. THE GPS RECEIVER IS MANUFACTURED BY APPLANIX MARINE POS/MV VER. 4.0.
4. THE GRID COORDINATE SYSTEM IS MICHIGAN STATE PLANE, NORTH ZONE (2111), NORTH AMERICAN DATUM 1983 (NAD83), US SURVEY FOOT.
5. THE PROJECT DEPTHS FOR THIS WATERWAY ARE: 32.0', 30.0', 28.0', 27.0', 26.0' & 25' AS INDICATED HEREON.
6. IMAGERY SOURCED FROM: ESRI & 2014 NAIP IMAGERY







1 inch = 100 feet



**NOTES:**

1. THE CHARTED SOUNDINGS REPRESENT THE MINIMUM DEPTH MEASURED AT THE TIME OF THE SURVEY WITHIN THE 10 X 10 AREA CENTERED ON THE TEXT. DERIVED FROM A 1 X 1 AVERAGE DATASET AT CELL CENTER. THIS CHART SHOULD NOT BE USED FOR CHANNEL CLEARANCE OR VOLUME COMPUTATIONS. MINIMUM DEPTH DATA IS PRODUCED FOR STRIKE/SOAL REMOVAL OPERATIONS AND NOTICE TO NAVIGATION INTERESTS.
2. ALL SOUNDING DEPTHS ARE REFERENCED TO INTERNATIONAL GREAT LAKES DATUM 1985 (IGLD 85) LOW WATER DATUM ELEVATION 601.1 FEET ABOVE MEAN WATER LEVEL AT RIMOUSKI QUEBEC. WATER LEVEL READINGS WERE OBTAINED WITH REAL TIME KINEMATIC (RTK) GLOBAL POSITIONING SYSTEM (GPS) VALUES. DEPTHS ARE MEASURED USING AN RZSONIC 2024 MULTIBEAM SONAR.
3. HORIZONTAL POSITIONING IS DETERMINED USING RTK GPS CORRECTIONS FROM A BASE STATION. THE GPS RECEIVER IS MANUFACTURED BY APPLANIX MARINE POS/MV VER. 4.0.
4. THE GRID COORDINATE SYSTEM IS MICHIGAN STATE PLANE, NORTH ZONE (211), NORTH AMERICAN DATUM 1983 (NAD83), US SURVEY FOOT.
5. THE PROJECT DEPTHS FOR THIS WATERWAY ARE: 32.0', 30.0', 28.0', 27.0', 26.0' & 25' AS INDICATED HEREON.
6. IMAGERY SOURCED FROM: ESRI & 2014 NAIP IMAGERY



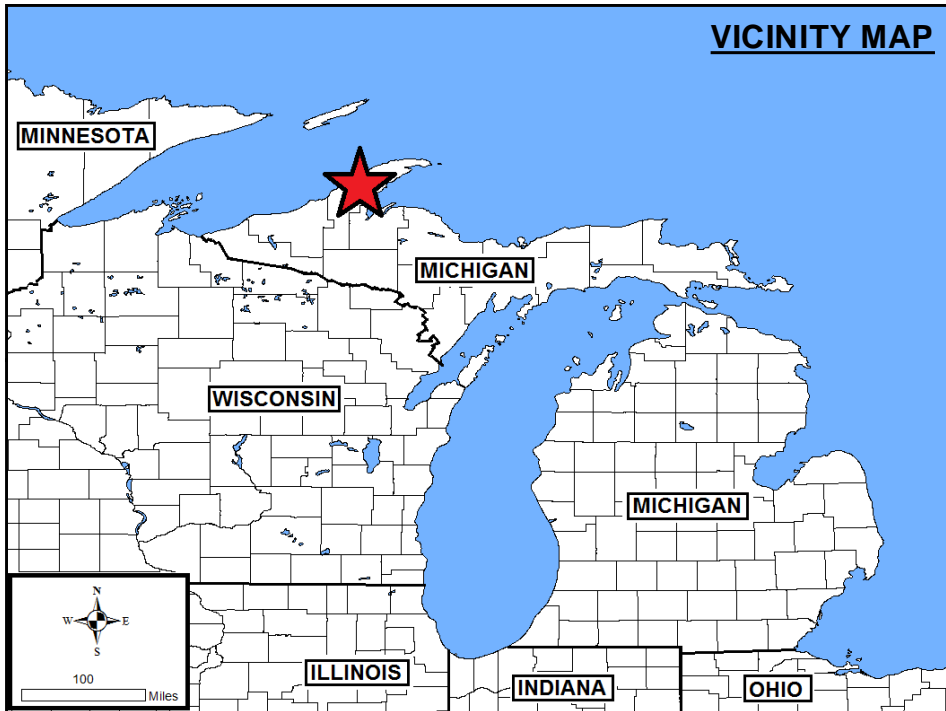
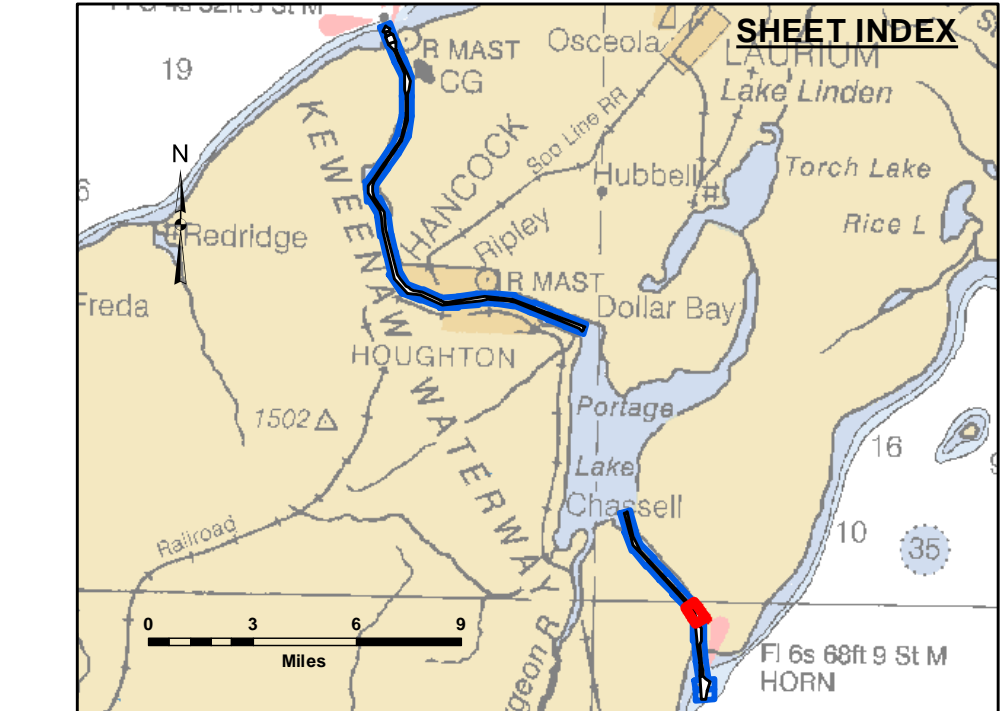
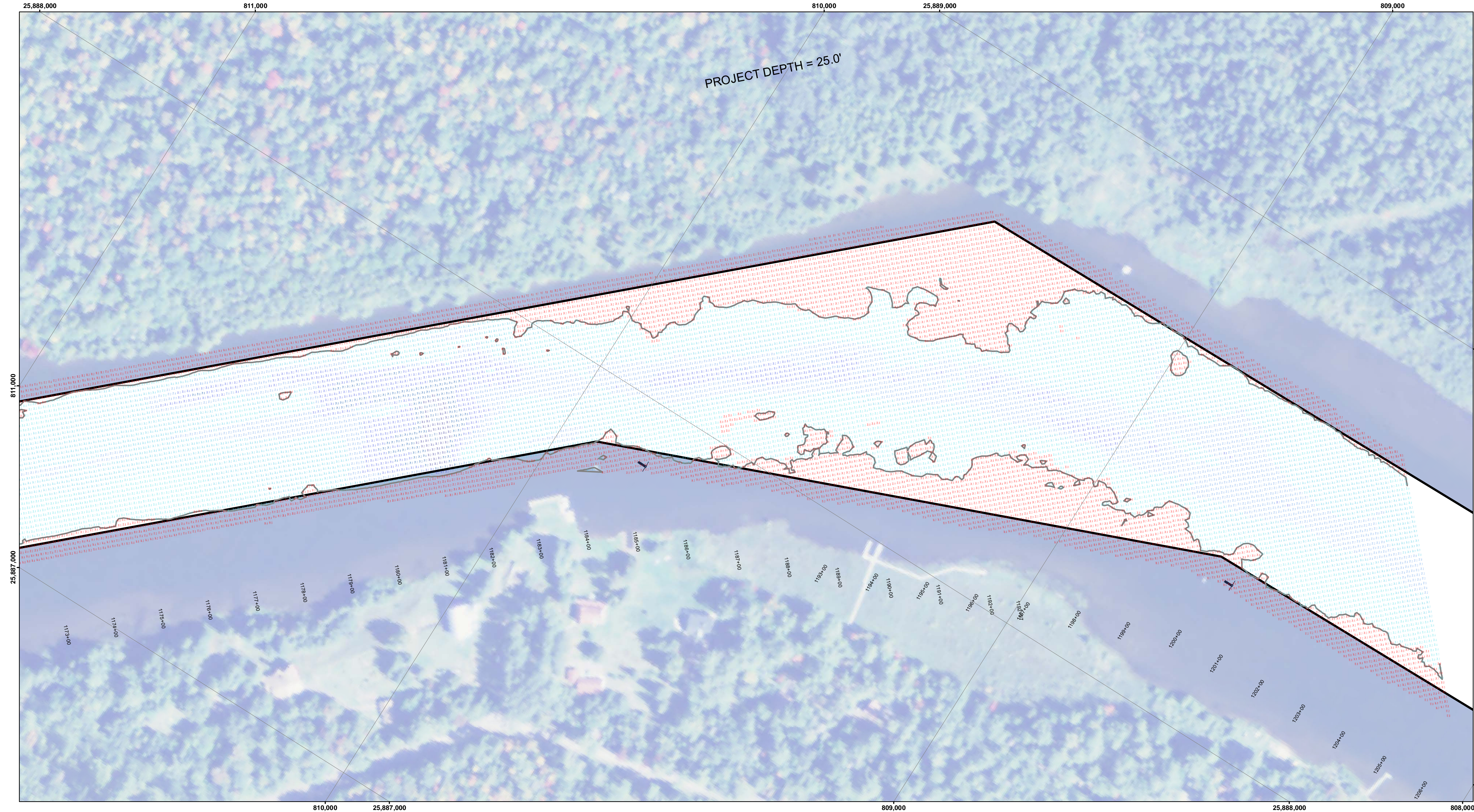
**DISCLAIMER:** The data represents the results of data collection and is not intended for use in any other manner than that intended for the purpose of the project. The data is not intended for use in any other manner than that intended for the purpose of the project. The data is not intended for use in any other manner than that intended for the purpose of the project.

Submitted:	Surveyed By:
Recommended:	Plotted By:
Approved:	Checked By:

**Keweenaw Waterway, MI**  
**Keweenaw Waterway**  
**KW\_01\_NAW\_20200903\_CS**  
**03 September 2020**

**Sheet Reference Number**  
**31 of 37**





**LEGEND**

- ..... Cable Submarine
- Cable Overhead
- Channel\_Limits
- Contour Lines

**SOUNDING LEGEND**

- LESS THAN PROJECT DEPTH
- PROJECT DEPTH
- PROJECT DEPTH +1'
- PROJECT DEPTH +2'
- PROJECT DEPTH +3'
- PROJECT DEPTH +4'
- PROJECT DEPTH +5'

1 inch = 100 feet

A compass rose showing North (N), South (S), East (E), and West (W). Below it is a scale bar in feet, ranging from 0 to 600 feet.

- NOTES:**
1. THE CHARTED SOUNDINGS REPRESENT THE MINIMUM DEPTH MEASURED AT THE TIME OF THE SURVEY WITHIN THE 10 X 10 AREA CENTERED ON THE TEXT. DERIVED FROM A 1" X 1" AVERAGE DATASET AT CELL CENTER. THIS CHART SHOULD NOT BE USED FOR CHANNEL CLEARANCE OR VOLUME COMPUTATIONS. MINIMUM DEPTH DATA IS PRODUCED FOR STRIKE/SOAL REMOVAL OPERATIONS AND NOTICE TO NAVIGATION INTERESTS.
  2. ALL SOUNDING DEPTHS ARE REFERENCED TO INTERNATIONAL GREAT LAKES DATUM 1985 (IGLD 85) LOW WATER DATUM ELEVATION 601.1 FEET ABOVE MEAN WATER LEVEL AT RHOUSKI QUEBEC. WATER LEVEL READINGS WERE OBTAINED WITH REAL TIME KINEMATIC (RTK) GLOBAL POSITIONING SYSTEM (GPS) VALUES. DEPTHS ARE MEASURED USING AN RZSONIC 2024 MULTIBEAM SONAR.
  3. HORIZONTAL POSITIONING IS DETERMINED USING RTK GPS CORRECTIONS FROM A BASE STATION. THE GPS RECEIVER IS MANUFACTURED BY APPLANIX MARINE POSMVY VER. 4.0.
  4. THE GRID COORDINATE SYSTEM IS MICHIGAN STATE PLANE, NORTH ZONE (2111), NORTH AMERICAN DATUM 1983 (NAD83), US SURVEY FOOT.
  5. THE PROJECT DEPTHS FOR THIS WATERWAY ARE: 32.0', 30.0', 28.0', 27.0', 26.0' & 25' AS INDICATED HEREON.
  6. IMAGERY SOURCED FROM: ESRI & 2014 NAIP IMAGERY

**Keweenaw Waterway, MI**  
**Keweenaw Waterway**  
**KW\_01\_NAW\_20200903\_CS**  
**03 September 2020**

**Sheet**  
**Reference**  
**Number**  
**32 of 37**



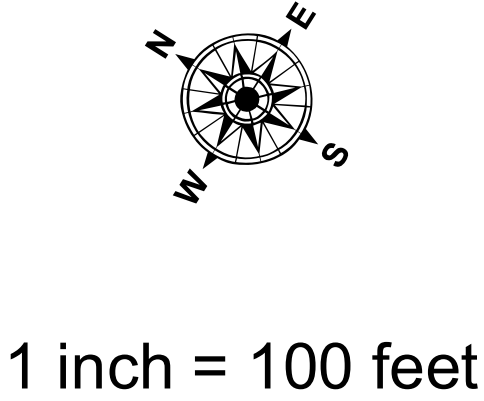
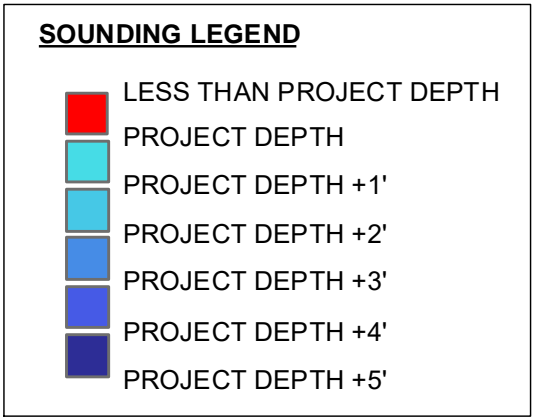
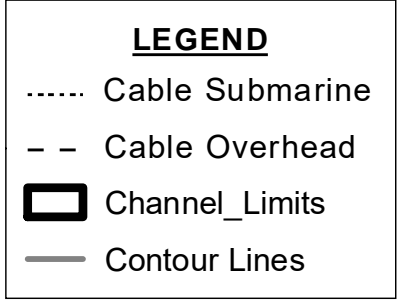
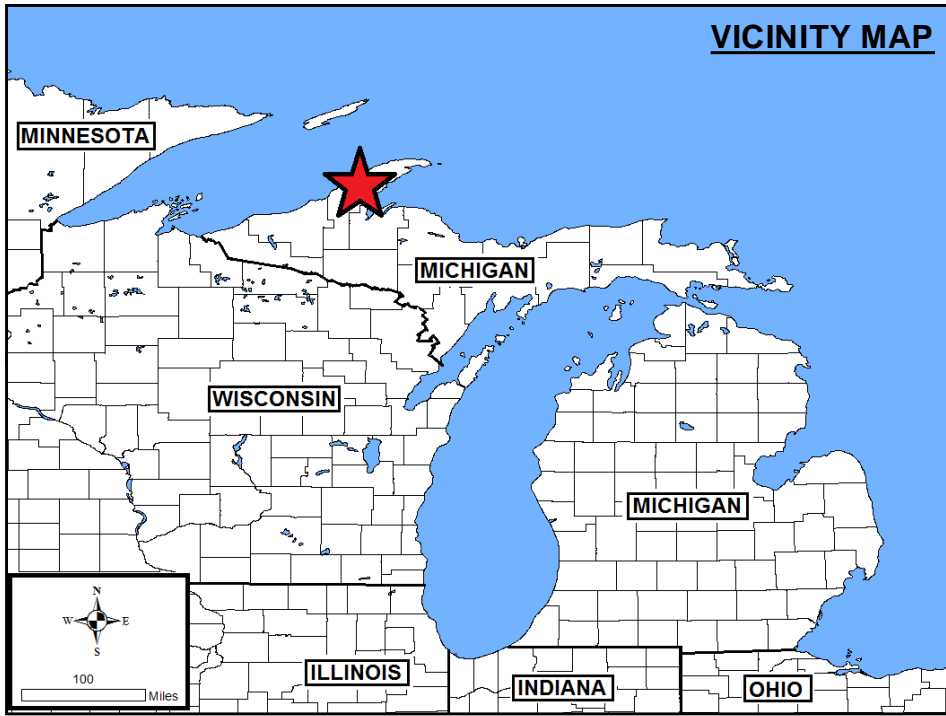
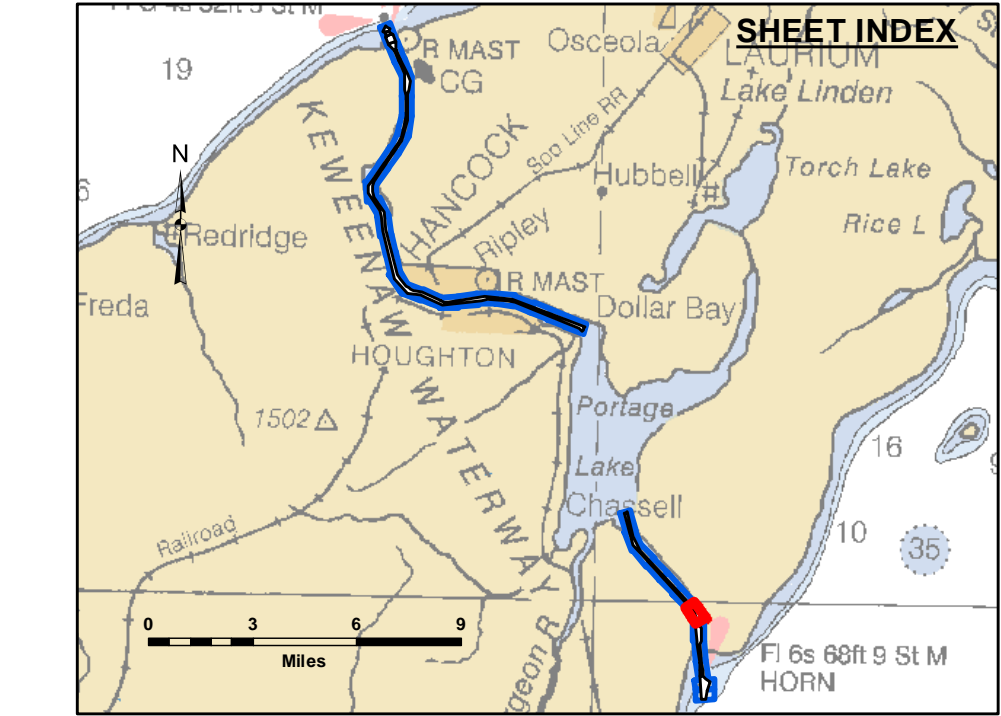
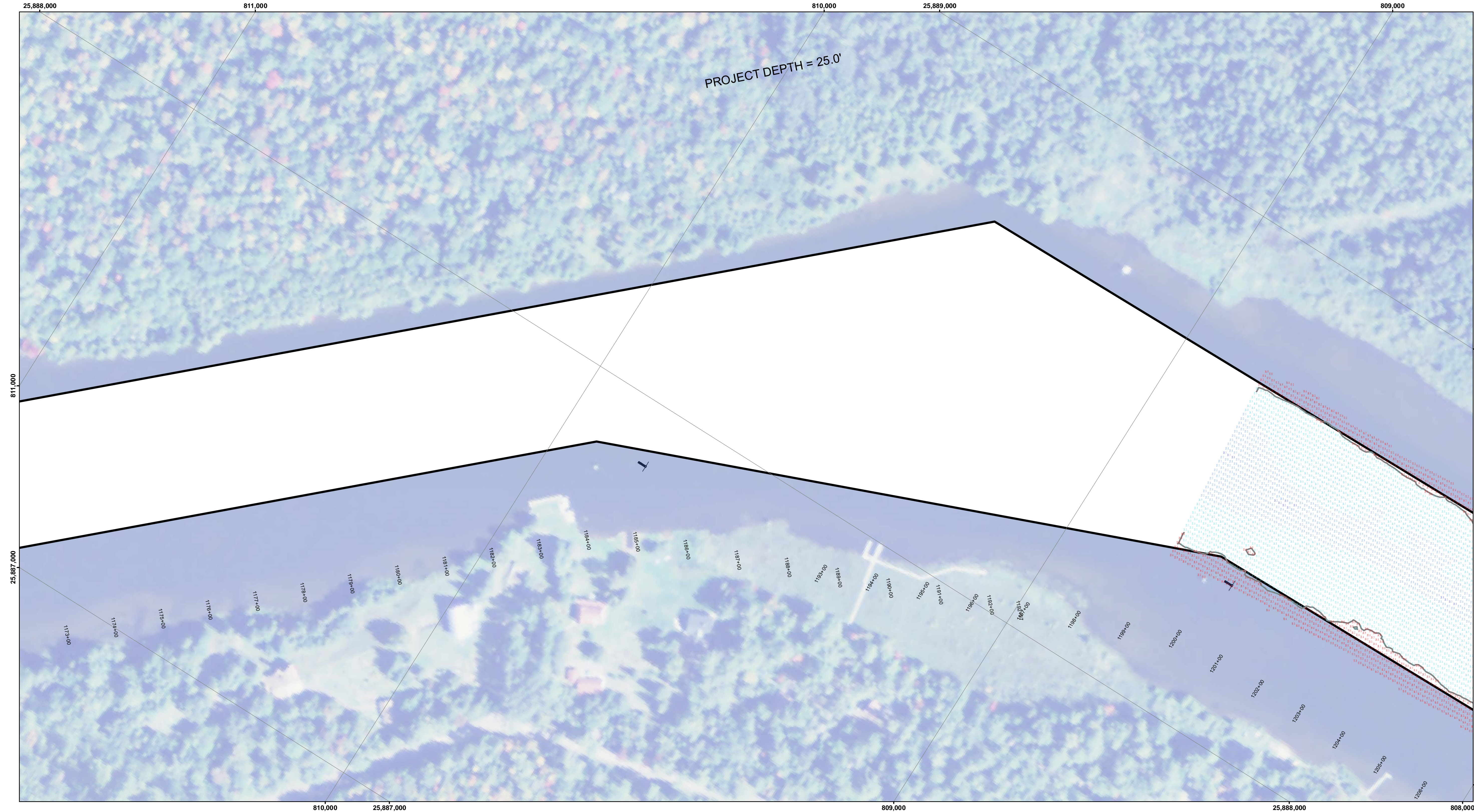
**DISCLAIMER:** The data represents the results of data collection and processing for a specific US Army Corps of Engineers activity and indicates the general existing conditions. The user is responsible for the results accuracy, specifications. The user is responsible for the results of any of the application of the data for other than its intended purpose.

**ACCESS CONSTRAINTS:** The United States Government furnishes these data and the recipient accepts and uses them with the express understanding that the data are not to be used for any purpose other than that for which they were provided, and that the data are not to be used for any purpose other than that for which they were provided, and that the data are not to be used for any purpose other than that for which they were provided.

Submitted:	Surveyed By:
Recommended:	Plotted By:
Approved:	Checked By:
Chief, Survey Section	
Chief, Technical Services	

U.S. ARMY CORPS OF ENGINEERS  
DETROIT DISTRICT





**NOTES:**

1. THE CHARTED SOUNDINGS REPRESENT THE MINIMUM DEPTH MEASURED AT THE TIME OF THE SURVEY WITHIN THE 10 X 10 AREA CENTERED ON THE TEXT. DERIVED FROM A 1" X 1" AVERAGE DATASET AT CELL CENTER. THIS CHART SHOULD NOT BE USED FOR CHANNEL CLEARANCE OR VOLUME COMPUTATIONS. MINIMUM DEPTH DATA IS PRODUCED FOR STRIKE/SOAL REMOVAL OPERATIONS AND NOTICE TO NAVIGATION INTERESTS.
2. ALL SOUNDING DEPTHS ARE REFERENCED TO INTERNATIONAL GREAT LAKES DATUM 1985 (IGLD 85) LOW WATER DATUM ELEVATION 601.1 FEET ABOVE MEAN WATER LEVEL AT RIMOUSKI QUEBEC. WATER LEVEL READINGS WERE OBTAINED WITH REAL TIME KINEMATIC (RTK) GLOBAL POSITIONING SYSTEM (GPS) VALUES. DEPTHS ARE MEASURED USING AN R2SONIC 2024 MULTIBEAM SONAR.
3. HORIZONTAL POSITIONING IS DETERMINED USING RTK GPS CORRECTIONS FROM A BASE STATION. THE GPS RECEIVER IS MANUFACTURED BY APPLANIX MARINE POS/MV VER. 4.0.
4. THE GRID COORDINATE SYSTEM IS MICHIGAN STATE PLANE, NORTH ZONE (2111), NORTH AMERICAN DATUM 1983 (NAD83), US SURVEY FOOT.
5. THE PROJECT DEPTHS FOR THIS WATERWAY ARE: 32.0', 30.0', 28.0', 27.0', 26.0' & 25' AS INDICATED HEREON.
6. IMAGERY SOURCED FROM: ESRI & 2014 NAIP IMAGERY



**DISCLAIMER:** The data represents the results of data collection and processing for a specific US Army Corps of Engineers activity and indicates the general existing conditions. The data is not intended to be used for any purpose other than the intended purpose. The user is responsible for the results of any of the application of the data for other than its intended purpose.

**ACCESS LIMITATIONS:** The United States Government furnishes these data and the recipient accepts and uses them with the express understanding that the data is not to be used for any purpose other than the intended purpose. The data is not to be used for any purpose other than the intended purpose. The data is not to be used for any purpose other than the intended purpose.

**WARRANTY:** The United States Government makes no warranty, expressed or implied, concerning the accuracy, completeness, readability, usability or suitability for any particular purpose of the data. The data is provided "as is" and the recipient assumes all risk under no liability whatsoever to any person by reason of any use made thereof. These data belong to the Government. Therefore the recipient may not transfer, copy, reproduce, or otherwise use these data to others without also transferring this Disclaimer.

U.S. ARMY CORPS OF ENGINEERS DETROIT DISTRICT		
Submitted:	Surveyed By: _____	
Recommended:	Plotted By: _____	
Approved:	Checked By: _____	

**Keweenaw Waterway, MI**

**Keweenaw Waterway**

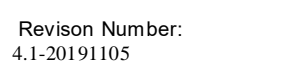
**KW\_01\_NAW\_20200902\_CS**

**02 September 2020**

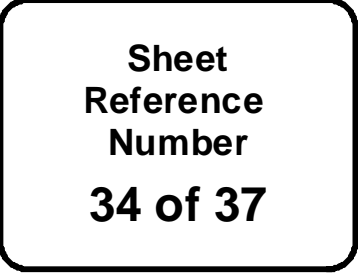
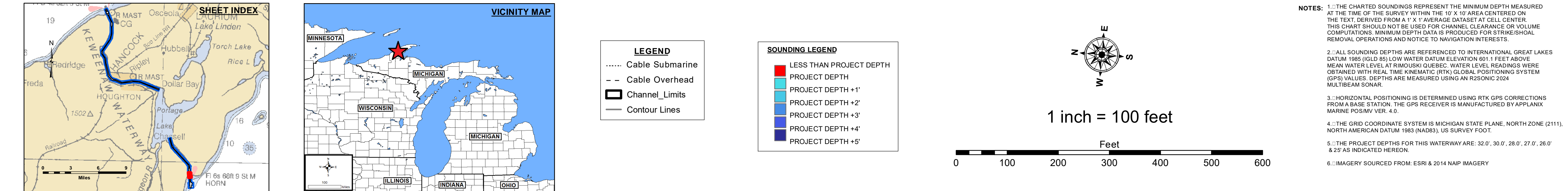
**Sheet Reference Number**

**32 of 37**

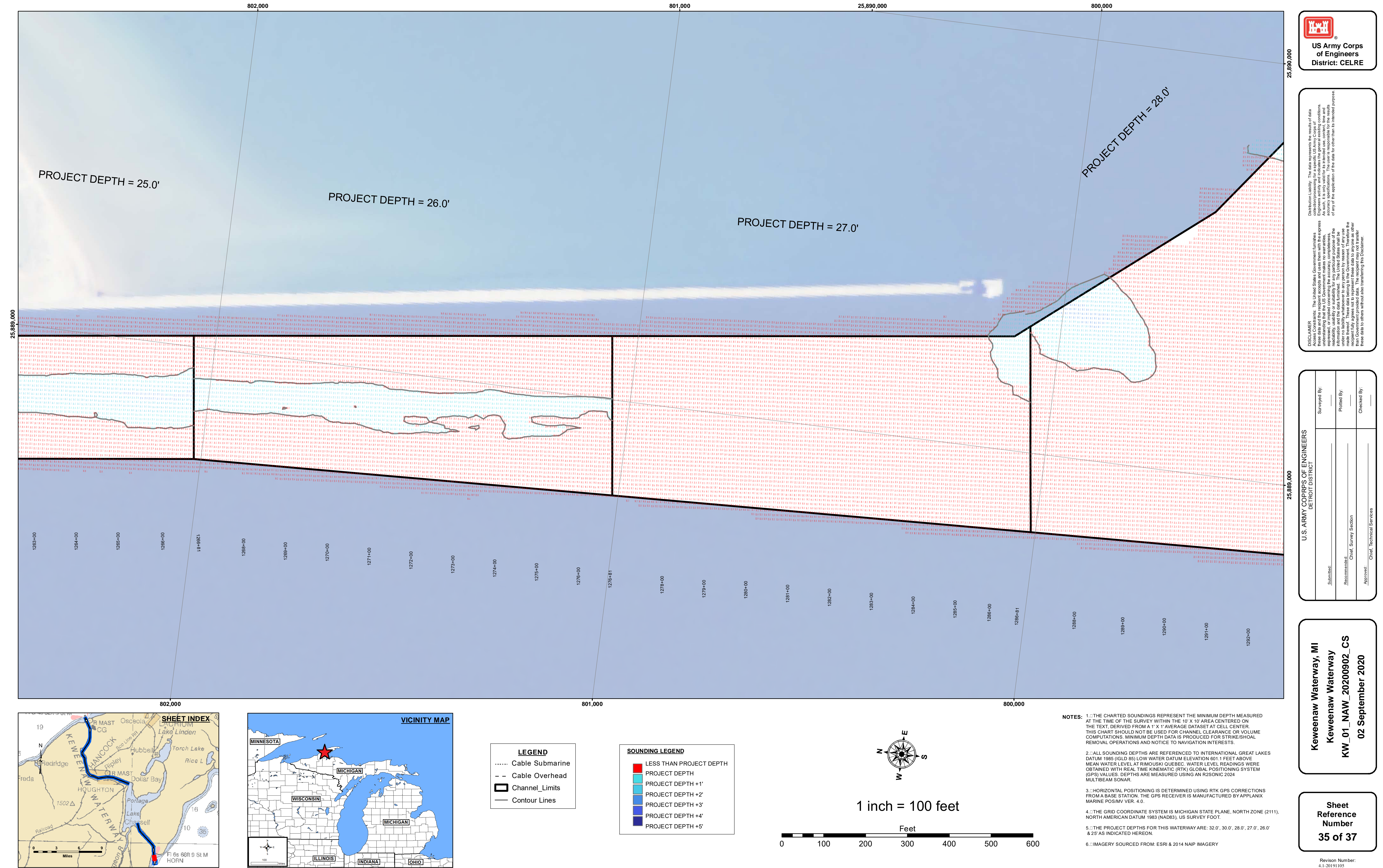












Public Use Policy: The data represents the results of data collection and processing for a specific US Army Corps of Engineers activity and indicates the general existing conditions of the waterway. The data is not intended for use in any other purpose of any of the application of the data for other than its intended purpose.

Access Constraints: The United States Government furnishes these data and the recipient accepts and uses them with the express understanding that the data is not to be used for any purpose other than that for which it was provided. The user is responsible for the accuracy, completeness, reliability, usability or suitability for any particular purpose of the data. The data is not to be used for any purpose other than that for which it was provided. These data are not to be used for any purpose other than that for which they were made. These data are not to be used for any purpose other than that for which they were made. These data are not to be used for any purpose other than that for which they were made.

Submitted: \_\_\_\_\_

Recommended: Chief, Survey Section

Approved: \_\_\_\_\_

Checked By: \_\_\_\_\_

Plotted By: \_\_\_\_\_

Surveyed By: \_\_\_\_\_

**U.S. ARMY CORPS OF ENGINEERS**

**DETROIT DISTRICT**

**Keweenaw Waterway, MI**

**Keweenaw Waterway**

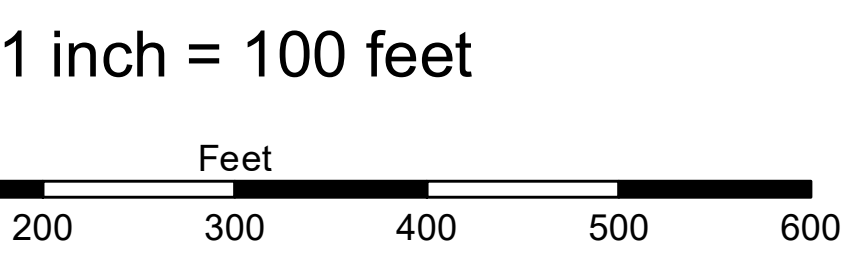
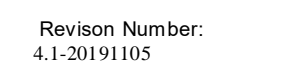
**KW\_01\_NAW\_20200902\_CS**

**02 September 2020**

**Sheet Reference Number**

**35 of 37**

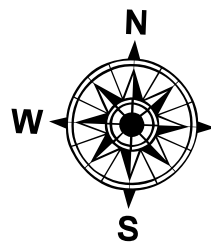
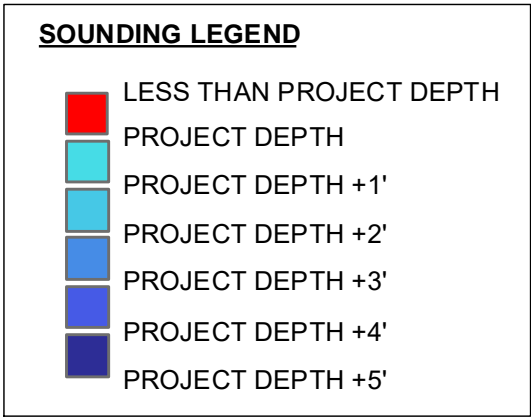
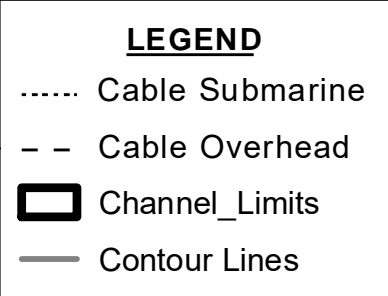
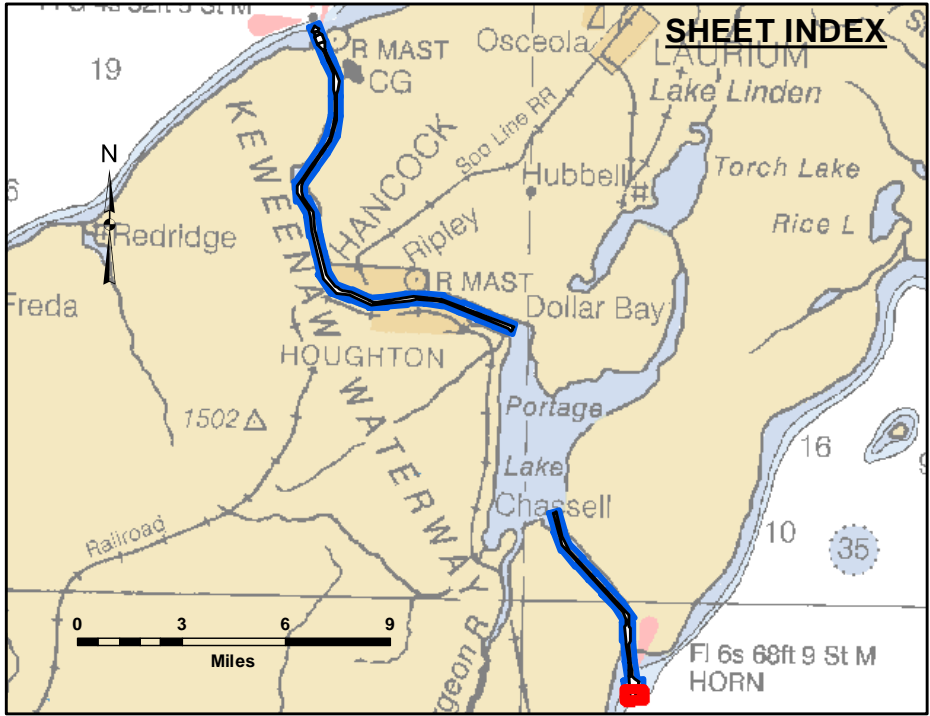
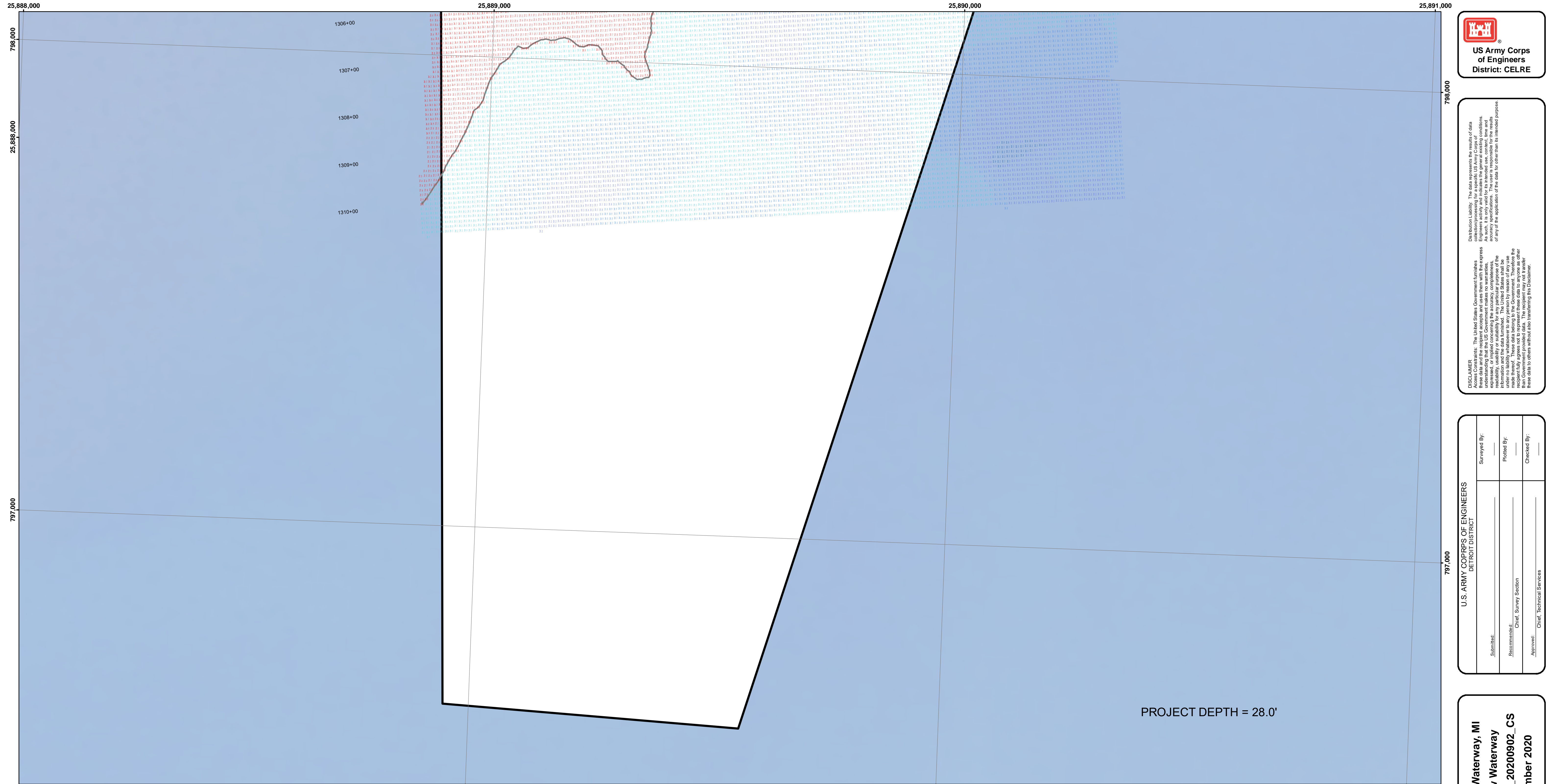




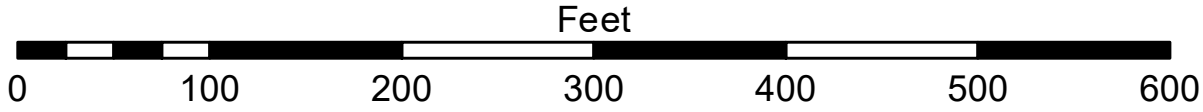
**NOTES:**

1. THE CHARTED SOUNDINGS REPRESENT THE MINIMUM DEPTH MEASURED AT THE TIME OF THE SURVEY WITHIN THE 10' X 10' AREA CENTERED ON THE TIDE, DERIVED FROM A 1" X 1" AVERAGE DATASET AT GULL CENTER. THIS CHART SHOULD NOT BE USED FOR CHANNEL CLEARANCE OR VOLUME COMPUTATIONS. MINIMUM DEPTH DATA IS PRODUCED FOR STRIKE/SWAL REMOVAL OPERATIONS AND NOTICE TO NAVIGATION INTERESTS.
2. ALL SOUNDING DEPTHS ARE REFERENCED TO INTERNATIONAL GREAT LAKES DATUM 1985 (IGLD 85) LOW WATER DATUM ELEVATION 601.1 FEET ABOVE MEAN WATER LEVEL AT RIMOUSKI QUEBEC. WATER LEVEL READINGS WERE OBTAINED WITH REAL TIME KINEMATIC (RTK) GLOBAL POSITIONING SYSTEM (GPS) VALUES. DEPTHS ARE MEASURED USING AN R2SONIC 2024 MULTIBEAM SONAR.
3. HORIZONTAL POSITIONING IS DETERMINED USING RTK GPS CORRECTIONS FROM A BASE STATION. THE GPS RECEIVER IS MANUFACTURED BY APPLANIX MARINE POS/NAV VER. 4.0.
4. THE GRID COORDINATE SYSTEM IS MICHIGAN STATE PLANE, NORTH ZONE (2111), NORTH AMERICAN DATUM 1983 (NAD83), US SURVEY FOOT.
5. THE PROJECT DEPTHS FOR THIS WATERWAY ARE: 32.0', 30.0', 28.0', 27.0', 26.0' & 25' AS INDICATED HEREON.
6. IMAGERY SOURCED FROM: ESRI & 2014 NNP IMAGERY





1 inch = 100 feet



- NOTES:
- THE CHARTED SOUNDINGS REPRESENT THE MINIMUM DEPTH MEASURED AT THE TIME OF THE SURVEY WITHIN THE 10 X 10 AREA CENTERED ON THE TEXT. DERIVED FROM A 1" X 1" AVERAGE DATASET AT CELL CENTER. THIS CHART SHOULD NOT BE USED FOR CHANNEL CLEARANCE OR VOLUME COMPUTATIONS. MINIMUM DEPTH DATA IS PRODUCED FOR STRIKE/SOAL REMOVAL OPERATIONS AND NOTICE TO NAVIGATION INTERESTS.
  - ALL SOUNDING DEPTHS ARE REFERENCED TO INTERNATIONAL GREAT LAKES DATUM 1985 (IGLD 85) LOW WATER DATUM ELEVATION 601.1 FEET ABOVE MEAN WATER LEVEL AT RIMOUSKI QUEBEC. WATER LEVEL READINGS WERE OBTAINED WITH REAL TIME KINEMATIC (RTK) GLOBAL POSITIONING SYSTEM (GPS) VALUES. DEPTHS ARE MEASURED USING AN R2SONIC 2024 MULTIBEAM SONAR.
  - HORIZONTAL POSITIONING IS DETERMINED USING RTK GPS CORRECTIONS FROM A BASE STATION. THE GPS RECEIVER IS MANUFACTURED BY APPLANIX MARINE POS/MV VER. 4.0.
  - THE GRID COORDINATE SYSTEM IS MICHIGAN STATE PLANE, NORTH ZONE (2111), NORTH AMERICAN DATUM 1983 (NAD83), US SURVEY FOOT.
  - THE PROJECT DEPTHS FOR THIS WATERWAY ARE: 32.0', 30.0', 28.0', 27.0', 26.0' & 25' AS INDICATED HEREON.
  - IMAGERY SOURCED FROM: ESRI & 2014 NAIP IMAGERY

Keweenaw Waterway, MI  
Keweenaw Waterway  
KW\_01\_NAW\_20200902\_CS  
02 September 2020

Sheet  
Reference  
Number  
37 of 37

U.S. ARMY CORPS OF ENGINEERS DETROIT DISTRICT	
Submitted: _____	Surveyed By: _____
Recommended: Chief, Survey Section	Plotted By: _____
Approved: Chief, Technical Services	Checked By: _____

DISCLAIMER: The data represents the results of data collection and is not intended for use in any other manner than that for which it was collected. The user is responsible for the results of any of the application of the data for other than its intended purpose. The data is not intended for use in any other manner than that for which it was collected. The user is responsible for the results of any of the application of the data for other than its intended purpose.

DISCLAIMER: The data represents the results of data collection and is not intended for use in any other manner than that for which it was collected. The user is responsible for the results of any of the application of the data for other than its intended purpose. The data is not intended for use in any other manner than that for which it was collected. The user is responsible for the results of any of the application of the data for other than its intended purpose.

